

Special features
**HERE ARE THE NEW
SUPER BREAKERS
FOR 2023**

Pages 42-46

News
**BOBCAT UNVEILS
ALL ELECTRIC
SKID STEER LOADER**

Page 49

Shows
**SAMOTER IS
BACK AGAIN**

Pages 50-52

Reports
**ASHINE SHINING
LIKE A DIAMOND**

Page 76

LET'S BEAT THE DRUM
**FOR DRUM
CUTTERS!**

Pages 60-62

Business

**THORSTEN AHR
IN NEW POSITION**

Page 10

Special feature

**GENTLE GIANTS
OF DEMOLITION**

Pages 14-18

Shows

**CONEXPO-CON/AGG
CRUSHES IT!**

Pages 24-28

Special feature

**EVERYTHING NEW
IN MOBILE CRUSHING
AND SCREENING**

Pages 34-38

News

**EPIROC HEXAGON
PICKS FOR DRUM
CUTTERS**

Page 40

YOUR ALL-NEW 22 VOLT CORDLESS PLATFORM

HILTI



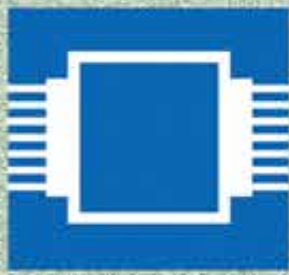
Nuron is the all-new 22V cordless platform comprising more than 70 tools that deliver more power than higher voltage, corded or gas-powered equivalents for a broad range of applications. Nuron uncompromises your tool park by pairing high performance tools with data-driven services.



SCAN TO
DISCOVER
MORE

#UNCOMPROMISE
Find out more: www.hilti.group

NURON



ONLY WIRE

WIDECUT

18:19



**BEYOND EXPECTATION
ONLY WIRE !**



Groove



Ø15.0*40 bpm

Steel



Ø10.2*48 bpm

Concrete



Ø10.5*40 bpm

Finish



Ø9.0*48 bpm

www.widecut.com



Professional Demolition International Magazine

Address: P.O. Box 786,
SE-191 27 Sollentuna, SWEDEN

Visitors address:
Skillingevägen 14A, SE-192 71 Sollentuna, SWEDEN

Phone: +46 8 631 90 70

E-mail: info@pdworld.com

Website: www.pdworld.com

ISSN Registration: ISSN 1650-979X

EDITORIAL STAFF

Editor-in-Chief
Jan Hermansson, Jan.Hermansson@pdworld.com

Assisting Editor-in-Chief
Anita do Rocio Hermansson,
Anita.Hermansson@pdworld.com

Editor: Vitor Hermansson, vitor@pdworld.com

Editor Europe: Mikael Karlsson,
mikael.karlsson@pdworld.com

Editor North & Central America
Jim Parsons, jim.parsons@pdworld.com

Editor South America
Luiz Carlos Beraldo,
luizcarlosberaldo@gmail.com

Editor Russia & Eastern Europe
Andrei Bushmarin,
andrei.bushmarin@pdworld.com

Editor Africa
Kevin Mayhew,
designmp@iafrica.com

SALES OFFICES

International Sales Director
Germany/Austria/Switzerland/UK & Ireland
/BeneLux/Finland/France/Spain/Portugal and Italy
Andrei Bushmarin
Phone: +7 921 949 27 81
E-mail: andrei.bushmarin@pdworld.com

Sweden/Norway/Denmark/Liechtenstein/North
America/South America
André Hermansson
Phone: +46 (0)8 631 90 70, Mobile +46 (0)70 979 04 03
E-mail: andre@pdworld.com

Australia/New Zealand/Asia Pacific/Korea/Japan
and rest of the world:
Contact PDI editorial office in Sweden
Phone: +46 (0)8 631 90 70, Mobile +46 (0)70 979 04 03
E-mail: info@pdworld.com

Publisher
Jan Hermansson

The magazine PDI, Professional Demolition International is published five times per year with a worldwide circulation of 10000 copies. The annual airmail subscription rate is US\$ 45. All subscription correspondence should be directed to: The subscription department, SCOP AB, P.O. Box 786, SE-191 27 Sollentuna, Sweden. PDI is mailed by second class postage. ©Copyright SCOP AB 2000-2020

Cover picture: ROCK.ZONE

PDI Magazine is a member of the following associations:



CONTENTS

PDi • issue no. 2 March - April 2023 • Volume 23

REGULARS



Editorials

6 The challenges of hiring within the drilling industry

8 The uneven world today

10 Bringing together the European and Northern American demolition industries

Associations

68 IACDS Annual Convention 2023

80 Europe's largest demolition conference

82 EDA annual meeting 2023

Business

6 New showcase video for 'Develon' brand

Hilti and Canvas announce strategic partnership

10 Torsten Ahr now responsible for Hydraulic Attachment Tools business line at Epiroc

Relief aid sent to earthquake damage areas in Turkey and Syria

12 Hilti Group achieves €6.35B in challenging environment

AquaJet welcomes new distributor

Dynaset appoints new CEO

News

8 The Lehnhoff SQ 60 quick coupler in operation

20 New product for abrasive cutting

Trevi Benne at SaMoTer

Senn AG acquires STZ-VP 3 low loader semitrailer

Hillhead announces extension to Showground Pavilion

22 AquaJet introduces 'Aqua Cutter' 750V

40 Hyundai Doosan Infracore to mass produce hydrogen internal combustion engines

Epiroc hexagon picks for drum cutters

New 'Mobibelt' stackers from Kleemann

49 Bobcat unveils all electric skid steer loader

54 Doosan to introduce 'Develon' brand at SaMoTer

56 The unstoppable rise of the compact tracked loader

Floor preparation specialist makes its debut

66 CM introduces radio controlled cold planer engcon exhibits at ConExpo- Con/Agg 2023

71 Efficient tools for a full range of construction applications from AGP

72 First time in Italy for new Bobcat products at SaMoTer 2023

Reach another level with the Boss 'Extractor 4000'

Jobsite Report

59 Epiroc ER 3000 drum cutter clears the (flow) path into the future

Reports

76 Ashine – Shining like a diamond

Shows

24-32 CONEXPO-CON/AGG crushes it!

50-51 SaMoTer is back again

52 Road building takes centre stage on the SaMoTer Lab demo area

74-75 Growing interest in IDA convention and Demtech tradeshow to be held in Bengaluru, India in September 2023

79 Helping hands on the road to success

Special Features

14-18 Gentle giants of demolition

34-38 Mobile crushing and screening

42-46 Here are the new super breakers for 2023

60-62 Let's beat the drum for drum cutters!

LAVINA

by  SUPERABRASIVE

INTRODUCING THE ALL-NEW S7 GRINDERS



**MORE TORQUE
BETTER CONTROL
LESS MAINTENANCE**



**DESIGNED TO
OUTPERFORM**



SCAN TO
LEARN MORE

superabrasive.com



Words from the IACDS President

THE CHALLENGES OF HIRING WITHIN THE DRILLING INDUSTRY

When we discuss the issues the drilling and sawing industry is facing, one immediately comes to light: the hiring of new workers. The number of professionals, specifically amongst the younger generations, began declining some time ago, becoming more noticeable ever since.

There are several factors that contribute to this problem: lack of growth and skills, continuous aging of the more experienced workers, and a decrease in productivity. When combined, they become an overarching obstacle for the companies in terms of time and monetary costs.

So, the question arises: what can we do to solve it?

To start, the mentality in how we approach the training and hiring process needs to change in both workers and the companies that hire them. Some fields and some professionals are cut out for colleges or universities. Sometimes, these institutions cannot provide an adequate amount of skill and knowledge, so alternative methods of education are required.

In this regard, the drilling and sawing industry might offer better training when it's personalised, practical, and comes in a 'chain'. An older worker taking their time to teach a younger professional usually yields good, long lasting results. While every country has its perks (in the United States, for example, a field labourer can easily achieve a great salary and benefits), this tendency seems to be somewhat common within the industry.

On the other hand, we, as companies, must diversify how we find our potential employees. While vocational schools are the typical source, they are not the only ones. Job fairs, community centres, and other places of encounter provide us with a lot of opportunities to discover industry professionals.

Likewise, understanding and communicating with the younger generation is the key to attracting them to the industry. Payment is not the only thing we value. Principles, teamwork, and appreciation of the work well done are also seen as highly beneficial by future professionals.

For instance, younger workers greatly appreciate the time and money the company invests in them. Thus, they value formal training and becoming better professionals as well as team members. Finding the common ground and compromise between the generations is crucial to make the industry move forward. After all, while every one of us has our interests, it is crucial

to remember that we all belong in the same industry. Therefore, collaborative efforts, as well as empathy with both companies and workers, are necessary for it to function properly.

Lastly, the lesson we are all learning is that we need to think outside the box. There is no easy equation to make something work; collective introspection and trial and error are required.

If we want to make a meaningful change, immediate measures are often not enough; well thought out, long term solutions are the way to go.



Douglas Walker, president of IACDS

New showcase video for 'Develon' brand

Following the recent announcement about the company's new brand and shared visions for worldwide markets moving forward, a new video has been introduced by Doosan to provide further details. The video went live on 27 February 2023 on the YouTube channel. It has been developed to communicate the timeline and outline the heritage associated with the former brand, as well as highlight the new brand's vision and generate awareness. It also served to build momentum as the company worked toward the full public launch at ConExpo-Con/Agg 2023.

The video opens with information on the company's long history in the construction industry and will transition into an interview with the CEO of Hyundai Doosan Infracore, Young-cheul Cho. Mr Cho will speak on the reasoning behind the new brand name and

introduce the vision and purpose of the brand.

The CEO of Hyundai Doosan Infracore, Seung Hyun Oh, will also be featured in the video and aims to assure Develon customers of the company's continuous commitment to satisfaction and innovative solutions.

Dedication to changing the future for customers and providing value beyond the product is of utmost importance for Develon, which is why the brand values will remain the same. Develon has been introduced in order for the company to help build a better future and continue to evolve with the shifting market. The Develon brand launch continued at ConExpo-Con/Agg 2023 in Las Vegas. Visitors had the opportunity to see Develon branded equipment, learn about the history of the brand, view new products and learn about the future of the company.



Thomas Hillbrand.

Hilti and Canvas announce strategic partnership

Hilti has announced a strategic partnership with Canvas, a construction robotics company that has developed a robotic dry walling solution aiming to empower people to build in bold new ways.

The partnership marks the beginning of a significant new step in robotics innovation after Hilti had launched the 'Jaibot', a semi-autonomous ceiling drilling robot in 2020. This collaboration brings together leaders in intelligent jobsite robotics who share the common vision that robotic tools will unlock vastly untapped potential and drive a new era of productivity and safety for skilled trade workers.

Canvas, headquartered in San Francisco, and founded in 2017 by veterans of Boston Dynamics, MIT and Stanford, leverages advances in collaborative robotics and machine learning to build a new class of tools for skilled tradespeople that harness the power of AI and machine learning. To date, Canvas has focused on dry wall finishing which, studies have shown, has among the highest prevalence of work related musculoskeletal disorder cases, with as many as one in four workers experiencing such effects.

Canvas states that its robot can apply both level 5 and level 4 dry wall finishes in a fraction of the time, and at a higher level of safety and reliability, compared to similar traditional methods. In contrast to manual application, the robot applies a single consistent layer of joint compound over wet tape and telescopes over 4.5m to do the vast majority of the work at height. It is said to reduce repetitive motion injuries and captures 99.9% of the dust produced by sanding.

As part of the partnership, Hilti will assume the manufacturing responsibilities for

future Canvas systems based on the proven Jaibot platform, giving Canvas a reliable and scalable global supply to meet the huge demand for its finishing robots. "At Hilti, our purpose is making construction better. We do this by focusing our resources on innovative hardware, software and services that help to increase contractor productivity, worker health and safety and sustainability," said Thomas Hillbrand, Member of Hilti's executive board. "Our shared values bring Hilti and Canvas together and we're excited to support Canvas in reimagining better ways of working through the power of robotics and AI."

"It's extremely validating that the demand for our dry wall finishing robot quickly outstretched our capacity to produce this year," says Canvas' CEO, Kevin Albert. "Contractors continue to struggle with rising costs and labour shortages. The demand we see is testament to the critical need for new tools in the industry to address these challenges and empower our skilled workforce. We're excited to announce this partnership which continues to push the boundary of what is possible and positions Canvas to meet current and future demand for our machines globally."

The Canvas-Hilti partnership positions the construction robotics company to scale globally in an industry that is ripe for change. The partnership will enable Canvas to help the dry wall industry solve its chronic and growing labour problem, while also making the job site cleaner, safer and less strenuous for the people doing the work.

edition 5

ZENESIS

WORLD'S MOST ADVANCED
PATTERNED DIAMOND TECHNOLOGY

DESIGN
YOUR OWN
PERFORMANCE

DYNAMIC COMFORT



EHWA DIAMOND IND.CO.LTD. www.ehwadia.com | salesinfo@ehwadia.co.kr | Tel- 82 31 370 9300 Fax 82 31 370 9191



THE UNEVEN WORLD TODAY

The world these days behaves a little strangely and unevenly, one could say. When the global pandemic broke out in 2020, everything slowed down for a few months, at least in Europe. The market plunged sharply and then recovered strongly thanks to government support packages in Europe and North America. The pandemic years would then turn out to be highly favourable for many players in the market. The cold air from the open door began to come in when the war in Ukraine started and the world was hit by a recession, in the main caused by an energy crisis.

In my own home country of Sweden, the construction market has been running like a train during the second half of 2020, all of 2021 and most of 2022. Most contractors who work within concrete cutting, demolition, remediation, grinding and polishing of concrete floors have generally experienced full order books. But as soon as the New Year began, there was a different sound to be heard. Many construction projects have been slowed down or put on hold. The demand for new housing has decreased sharply and several construction companies have decided to stop ongoing or new projects. Large government projects, however, are rolling along unchanged or even more extensively than was initially planned.

So, the contractors working on large government infrastructure projects have plenty of work for a good while to come, but many of the smaller projects have been throttled. This is a development that we are seeing all over Europe and not just in Sweden. Many contractors involved in demolition, concrete cutting and similar projects, now have to rely on an increase in renovation and rebuilding projects. This is something that always becomes an option when we are in a recession. Construction companies that mainly work within new construction are having a tough time in Sweden and bankruptcies have already started to increase.

This situation naturally affects the ability, and also the interest, to invest in new machines and equipment, which leads to reduced sales. This year, many trade shows are coming back in full force after being postponed for some years due to the pandemic. It will be interesting to read the outcome of, for example, the SaMoTer show that will be held in Verona at the beginning of May, and how the global situation affects the market in Europe.

A recent trade show that PDi Magazine attended and covered is ConExpo-Con/Agg in Las Vegas, USA. The show was a complete success and became the largest edition of the tradeshow ever. The North American market is in a better condition and in a different situation than Europe. Inflation has already started to show signs of coming down and there is widespread optimism. I recently visited Brazil, and the fact is that even here there is an intensive rearmament of the country with many extensive projects run by both the state and private actors. An example is a massive bridge project between Brazil and Paraguay in the city of Foz do Iguaçu, which is being financed by the Iguazu Hydroelectric Consortium, Itaipu.

In this issue of PDi you will find a number of examples that give a cause for optimism despite tough times in many parts of the world. You can read several special features about new demolition machines, new mobile recycling plants, new hydraulic breakers and drum cutters. We are also publishing a large report about the ConExpo-Con/Agg fair.

I hope you enjoy the read.



Jan Hermansson
Editor-in-Chief
 jan.hermansson@pdworld.com



The Lehnhoff SQ 60 quick coupler in operation

Sometimes it is only small details that have a big effect. Like the symmetrical SQ 60 quick coupler from Lehnhoff, for example, which allows you to think about work processes in a completely new and, above all, more effective way.

Wherever Gebrüder Reindl GmbH & Co KG works, something heavy is moved. For the experts in transport and earthworks from Stams, Austria, everything revolves around excavation, contract crushing earthmoving and transport. They use various excavators, wheel loaders, trucks and screening machines. For the excavators in the 8t to 18t class, the company has now invested in the symmetrical SQ 60 quick coupler from Lehnhoff.

Equipment carrier

Modern excavators are being used more and more as equipment carriers. In order for them to develop their full effectiveness and effortlessly use the appropriate attachments a reliable quick coupler system is required. Therefore, the Reindl company has opted for the symmetrical SQ 60 quick coupler from Lehnhoff. "It was important to us that our excavators could be used in as many different ways as possible," explains René Reindl, junior managing director. "With the SQ 60, we can get the maximum out of our excavators." Thanks to the symmetrical design, for example, the equipment and buckets used can easily be picked up and rotated 180°.

Another important detail of the Lehnhoff SQ 60 is the power feed through. Since Reindl's excavators are equipped with 3D control, the necessary power feed through can be used for GPS control of the attachment.

New application options

Especially for complex tasks with different requirements, such as canal construc-

tion with backfilling, productivity can be increased enormously by using the right attachments. "In the past, it was not profitable to take the attachment compactor with you for small compaction jobs, for example. It would have taken far too long to attach it to the excavator, it wouldn't have paid off," states René Reindl. "Now we don't have to think twice and can use all the attachments we need. Eventually, the driver can change at any time without further ado from the cabin."

The new Lehnhoff SQ quick couplers are designed to offer new levels of productivity in demolition. If it is necessary to change between demolition grabs or shears, magnets and grabs for demolition and sorting, this no longer represents a real effort. The driver can use the entire arsenal of tools without having to take breaks to change tools. The Lehnhoff SQ 60 is designed according to the international S standard. But the special feature of the Lehnhoff quick coupler system is the valve block, which is also symmetrically arranged. This means that even fully hydraulic attachments can be rotated by 180°. Tilting and crusher buckets, for example, can easily be used as backhoe buckets.

Maintenance friendly

In addition to the newly gained freedom in the use of attachments, the SQ 60 is characterised above all by its ease maintenance. The built in leak free short stroke valves are designed to be replaced on site within five minutes, if necessary, using the valve tool provided. This saves long maintenance times, and the excavators are quick to return to service. "We always have three valve sets in stock in case a valve needs to be changed quickly. We can now use them for up to ten of our excavators, so we don't have to worry about any downtime with the Lehnhoff SQ 60," concludes René Reindl.



RP20 **B** **B**

FAST. SOLID. MBI.



Bringing together the European and Northern American demolition industries

The first trimester of 2023 was incredibly fruitful for the European Demolition Association. Many projects, publications, and events took place and many more are on the way. The demolition industry is thriving, and the relationships within the sector intensify as the days go by.

At the end of February, I had the honour to attend The Demolition Phoenix 2023 for the first time as the president of the EDA. This annual event, organised by the National Demolition Association, NDA, gathered industry professionals from all around the world.

The environment, as well as the warm welcome we received, was impressive. The feeling of unity and collaborative disposition were palpable. Thus, meeting and discussing topics such as technological evolution, the circular economy, and the environmental carbon footprint was interesting and productive.

As the event managed to reunite professionals from Northern America, Europe, and other continents, the answers, contributions, and opinions painted a very detailed and complete picture of the demolition industry.

Throughout the event, one thing was certain, while the cultural and legislative contexts are very different between the countries and continents, the problems we share are the same. Therefore, despite the differences, we can look for joint solutions that apply to all of us.

The exhibitors present at the Demolition Phoenix also deserve a special mention, as the number of activities they brought was outstanding. From the live demolition test fields to traditional fair stands, they showcased the brilliance and innovation of the suppliers to the demolition industry.

Last, but not least, I'd like to thank the president of the NDA, James Milburn, for the kind words he dedicated to the EDA. The hard work and dedication that goes into organising this type of event are immense, but the payoff is equally great. The effort the industry professionals put into bringing the sector together, sharing knowledge, and looking for solutions suitable for all of us, always yields exceptional results.

The Demolition Phoenix 2023 has only reaffirmed what I already knew: no matter where you go, meeting demolition professionals makes you feel at home.

About EDA

The EDA was founded in 1978 and is the leading platform for national demolition associations, demolition contractors and suppliers. The EDA has a strong focus on developments in Europe, which are of interest to the demolition industry.

info@europeandemolition.org
www.europeandemolition.org



Stefano Panseri, President of EDA, European Demolition Association



Torsten Ahr now responsible for Hydraulic Attachment Tools business line at Epiroc

Effective 1 March 2023, Torsten Ahr will be vice president of the Hydraulic Attachment Tools business line at Epiroc. Since 2013, he has served as the vice president for marketing for the organisation. Now the 58-year-old's field of responsibility is expanding to the entire operation of the business line including P&L responsibility. "In an increasingly complex world, we have to focus on the right tasks," explains Ahr. "By bundling competencies within the business line, we want to become more agile. Our focus on our customers and our growth enables us to make decisions faster, improve the speed of our projects and bring more innovations to market."

"In terms of hydraulic breakers and drum cutter attachments, the company sees itself competitive and on a growth course. There is still room for improvement with many other attachments," explains Ahr. "We want to grow in the area of non-impact attachments. This change is the right step for us to achieve this goal." The business line for hydraulic attachments has production sites in Essen and Dermbach (Germany), Kalmar (Sweden), Kronenwetter (USA) and Nashik (India). The

new management of the business line is also located in Essen. "This is a transformation, not a restructuring," Ahr clarifies. "We want to break new ground with the entire existing team."

Epiroc sees itself as a vital part of a sustainable society and a global productivity partner for mining and infrastructure customers. With ground breaking technology, Epiroc develops and provides innovative and safe equipment, such as drill rigs, rock excavation and construction equipment and tools for surface and underground applications. The company also aims to provide world class service and other aftermarket support services as well as provide solutions for automation, digitalisation and electrification.

Epiroc's Tools & Attachments division develops, manufactures and markets rock drilling tools, exploration drilling tools, ground support equipment and hydraulic attachment tools. The products are used for rock excavation, mining, construction, demolition and recycling. The division also provides related services. It has production facilities on six continents, including major facilities in Sweden and Germany.

Relief aid sent to earthquake damage areas in Turkey and Syria

Komatsu Ltd. (president and CEO Hiroyuki Ogawa) has expressed its deepest condolences to those who lost their lives in the recent earthquake that occurred in south eastern Turkey. Komatsu also extends its deepest sympathy to all those affected by the earthquake. In cooperation with its local distributor Marubeni Dagitim ve Servis A. S. (MDS), a wholly owned subsidiary of Marubeni Corporation, Komatsu will lend construction equipment needed for relief efforts to the affected areas free of charge and dispatch operators and service

mechanics to assist the relief efforts, which should amount to €140,000. Komatsu will also donate €70,000 through the Japanese Red Cross Society (total support of €210,000).

Since establishing an office in Turkey in 1975, Komatsu has been engaging its locally anchored business in Turkey, a major market in the Middle East region. Komatsu will continue to provide material assistance to help the affected areas recover as quickly as possible while monitoring the conditions with MDS.

MEISTERWERK.



Wall saw EDIA Crown



Wall saw EDIA turbo



TURBO WET



EDIA DRY



EDIA WET



HSD Europe GmbH

- ADDRESS : Mergenthalerallee 77, 65760 Eschborn, Germany
- TEL : +49 (0) 6196 96 79 00 - FAX : +49 (0)6196 96 79 015
- E-MAIL : info@hsdeu.com
- WWW.HSDEU.COM



SCAN ME

EVENTS

SAMOTER 2023

3-7 May, 2023
Verona Exhibition Centre
Verona, Italy

www.samoter.it

IDA CONVENTION AND DEMTECH TRADESHOW

28-29 September, 2023
Bangalore, India

www.indiandemolition.org
www.demtech.in

WORLD OF CONCRETE

Las Vegas Convention Center,
Las Vegas, USA

www.worldofconcrete.com

INTERMAT 2024

24-27 April, 2024
Villepinte, Paris Nord,
France

www.intermat.fr

DEMCON 2024

September 19-20, 2024
InfraCity, Stockholm,
Sweden

www.demcon.se

BAUMA CHINA 2022

26-29 Nov, 2024
Shanghai Exhibition Center,
Shanghai, China

www.bauma-china.com

BAUMA CONEXPO INDIA

11-14 Dec, 2024
India Expo Centre, Greater Noida,
New Delhi, India

www.bcindia.com

Hilti Group achieves €6.35B in challenging environment

With sales growth of 10.0% in local currencies, and 6.2% in Swiss francs, Hilti reached a turnover level of more than €6.35B. The operating result showed a decline of 13.7% compared to the all-time high achieved in 2021. This decline is due to the unprecedented increase of raw material, component and transport costs, the devaluation of the euro and other currencies against the Swiss franc, the impact of the war in Ukraine and increased investments into innovation and into the long term strategic strength of the Hilti Group.

"2022 was a challenging year, which inevitably left its mark on our profitability. Nevertheless, we were able to achieve our sales target in local currencies. At the same time, we continued to invest massively into the future of our company," says CEO Jahangir Doongaji. In local currencies, the strongest sales growth was recorded by the Americas region with 16.5%. Europe achieved an increase of 9.6%. In Asia/Pacific, growth was 8.2%, significantly slowed by the impact of Covid-19 restrictions in China. As expected, the war in Ukraine and the corresponding sanctions against Russia resulted in a decline in sales for the Eastern Europe / Middle East / Africa region (-2.3%). The weaker euro and the devaluation in a number of currencies resulted in a negative impact on sales in Swiss francs, totalling 3.8% points.

Hilti again made substantial investments into innovation and long term strategic projects. In 2022, the new battery platform, 'Nuron',

was launched with more than 70 tools – the largest product launch in the company's history. The software portfolio expanded with the introduction in Europe of the 'Fieldwire' jobsite management solution. Expenditure for research and development reached €440M (+17.2%), a share of 6.9% of sales. As of the end of the year, the Group had 32,487 team members, an addition of 1,372 (+4.4%) employees compared to the previous year. The operating result decreased by 13.7% to €736M while net income decreased by 16.3% to €569M. This led to a return on sales (ROS) of 11.5% (-2.7%). Consequently, the return on capital employed (ROCE) was at 13.2% (-3.9%).

Construction market forecasts point to softer growth in 2023 caused by further interest rate hikes, ongoing geopolitical tensions and a further appreciation of the Swiss franc. Hence, the Hilti Group expects high single digit sales growth in local currencies and a similar ROS level in Swiss francs compared to 2022. Of particular importance is the new group strategy, 'Lead 2030', which will be rolled out globally in 2023.

The company strives to lead the transformation of the construction industry and will continuously invest to drive innovation in both hardware and software solutions and to build up its market reach resources. As a consequence of the new group strategy, Hilti has also updated its financial guardrails and will keep ROS in a range of 10% to 14%, and ROCE between 12% and 18%.



Annie Karpainen.

Dynaset appoints new CEO

The New Year has brought a new wind to the Dynaset organisation, with Annie Karpainen being appointed the new CEO of the company. "I am delighted and honoured to continue as CEO of our family business, following in the footsteps of my father, Reijo Karpainen. Reijo has done valuable work for almost four decades to bring Dynaset to its current point and now deserves an easy ride towards retirement; but no need to worry, as many of you will guess, we will still see him at the factory and industry events. Reijo will also continue as chairman of the board of Dynaset Oy. Together with the whole Dynaset Team, we would like to thank Reijo for the past years," says Annie Karpainen.

Dynaset as a company, nor its operational leadership, is new to Annie. For the last few years Annie has served as executive vice president of Dynaset. She has worked in the company for 15 years and she is well prepared for this moment. "I strongly subscribe to our values; a customer oriented approach, courage, teamwork, and Dynaset technology which will guide our journey toward a better world of machinery. I aim to take the lessons from the journey already travelled, combine them with new ones, and, with our team, continue developing our operations and offerings to serve our clients better in whatever industry they work in," says Annie.

Annie sees a very bright future for Dynaset, with years of continuous development of operations and products, enabling agile but high quality functions in the changing situations that the future market will offer. She says that it is Dynaset's strong desire to build genuine, long lasting partnerships and offer the best solutions on the market at competitive prices ensures that customers will have a place in the vanguard now and in the future.

www.dynaset.com

Aquajet welcomes new distributor

Aquajet has announced the addition of a new distributor in Australia to its expanding global dealer network.

"Aquajet is innovating how demolition and restoration work is done worldwide. We partner with distributors who share our vision for reducing labour, increasing efficiency and ensuring safety on all types of projects from bridge decks and parking garages to industrial cleaning applications," said Roger Simonsson, Aquajet's managing director. "As hydrodemolition continues to grow, so does our global dealer network. Brokk Australia is the ideal partner to help us bring our state of the art technology to that part of the world."

Brokk Australia Pty Ltd boasts locations in Morphett Vale in South Australia, Sydney and Melbourne. It will provide access to Aquajet's full range of 'Aqua Cutter' hydrodemolition robots and accessories to Australia and New Zealand. In addition to sales, parts and service for the full arsenal of Aquajet hydrodemolition robots, the dealer offers training on safe and efficient operation techniques. Brokk Australia also provides consulting to clients to help them select the right hydrodemolition equipment for their specific needs.

"Aquajet places great emphasis on building a collaborative relationship with customers to support them throughout the life of the machine and draw from their experience and suggestions to improve future designs," Simonsson said. "Our dealers provide immense support every step of the way, from the initial sale to machine maintenance and problem solving." Aquajet's global distributor network includes North and Latin America, Europe, Asia, Oceania, Africa, Australia and the Middle East. For more information or to find a distributor, visit <https://aquajet.se/contact/#global-dealer-network>.





ISO 9001:2008
DIN EN ISO
14001:2009
Management
System
www.tuv.com
ID 0091004797



COLLABORATION

PROFESSIONAL X ORIGINAL

10 SERIES

SHINHAN



ARIX



**SHINHAN
DIAMOND**

Masterpiece
beyond Technology

HEAD OFFICE (Republic Of Korea)

21635, [36B-10L, Namdong Induspark] 375 Namdongdong-ro, Namdong-gu, Incheon,
Republic of Korea

T. +82-1600-4804 | F. +82-32-3414 | en.shinhandia.co.kr



www.arixshinhan.com



GENTLE

giants of demolition

Modern day demolition excavators might seem daunting on the outside but inside they are as sophisticated and comfortable as a luxurious sedan. Thanks to these ‘gentle giants’, the demolition of building structures is as smooth and controlled as driving a car on a German autobahn. PDi’s Andrei Bushmarin delivers the latest insights from the demolition excavator industry.

Three new demolition crawlers from Hitachi

Hitachi has introduced three new special application machines that have been developed to maximise efficiency, uptime and safety on heavy duty and demolition projects. The ZX390TC-7 tool carrier has been specially adapted to work with larger working tools, and can be used for secondary demolition works. The two multi-carrier models – ZX400MC-7 and ZX600MC-7 – are supplied with up to four front attachments and are built to meet the requirements of any demolition project. They are designed to complete the tasks of several machines on site, which simplifies planning and minimises transport and personnel costs. They also improve performance and safety for operators. Based on standard Hitachi ‘Zaxis-7’ models, with Zaxis-7 technology and Stage V compliant engines, they were developed jointly with Kreg (Kenki Technology Group GmbH). “The launch of these models shows how Hitachi is addressing the specific requirements of certain industries,” says Burkhard Jansen, product manager Special Applications and New Technologies at Hitachi Construction Machinery (Europe) NV. “We are constantly listening to the needs

of our customers, particularly regarding improvements to productivity and efficiency on site.”

www.hitachicm.eu

Volvo CE launches new straight boom demolition crawler

Volvo Construction Equipment announced at the NDA show in Phoenix the launch of its new 30t EC300E straight boom demolition excavator. The company also announced a feature called ‘Lifting Mode’ for its multi demolition boom that allows a high reach demolition excavator to serve as a safe carrier for the lifting of machine components from a trailer to the ground, enhancing versatility. “Being able to offer customers another size of straight boom excavator is exciting, and launching at the NDA show felt ideal,” said Tony den Hoed, key account director, demolition equipment at Volvo CE. “The demolition segment is ever changing, and we are proud to keep up with it by offering products and solutions that will keep operators safe and productive.”

Rather than the traditional boom and stick approach of digging biased excavators, the crawler is fitted with a 7m

long straight boom and a purpose built arm. The extra-long straight boom on the EC300E provides significant height and reach advantages over the standard machine. The cab is protected against falling debris with a frame mounted FOG feature which also provides clear views of the worksite. The roof window and front piece of glass are made from P5A, which is resistant to high impact. The EC300E straight boom has a reinforced frame made of heavy duty plate steel with bolt head protection. There is also heavy duty undercover protection, a belly guard and a full track guard. A slew ring cover and heavy duty side doors with screens and shutters offer added protection. Volvo CE has also added protection on the bucket and boom cylinders. The EC300E comes with several standard features that are designed for demolition applications. These include X1 and X3 auxiliary piping, a quick fit and oil drain line, and water lines that are connected to a dust suppression system that can work in either auto or manual mode. A heavy counterweight provides balance and is easily removable for transportation.

The new ‘Lifting Mode for Multi Demolition Boom’ — specifically designed for Volvo high reach

Cutting-edge connectivity. Done.

More productivity, better planning and higher efficiency through real-time data from the construction site. For smart users.

Find out more at www.tyrolit.com/movesmart



MoveSmart

TECHNOLOGY
powered by ToolSense



Premium grinding tools since 1919
www.tyrolit.com

TYROLIT



excavators — has been developed to provide improved flexibility, reduced emissions and lower total cost of ownership. It can be factory fitted to any of the company's three high reach excavators: the EC380E HR, the EC480E HR and the EC750E HR. Each of which is already compatible with various extensions and booms to carry out a wide range of applications. This mode can simplify transporting equipment to jobsites because it allows the excavator to safely lift components such as cradles and digging or high reach booms from the trailer to the ground, at which point they can be safely installed on the machine. "Total cost of ownership is reduced by eliminating the need for a mobile crane or second excavator, and flexibility is increased thanks to the time savings," den Hoed said. "Emissions are also reduced due to fewer vehicles being on site." The solution consists of machine software specifically designed for the controlled lifting of equipment, as well as visual warnings outside the cab to warn bystanders that a lifting process is underway. The software also controls hydraulic pressure and engine speed, ensuring optimum safety throughout. This lifting mode includes a certified lifting accessory, designed to fit the patented modular joint design from the multi demolition boom and can easily be connected to the lower pin of the boom. When all components are safely unloaded, switching to the high reach or digging boom is easy, thanks to that modular hydraulic joint.

www.volvoce.com

New straight boom Cat for demolition of low rise buildings and bridges

The brand new Cat 352 'Straight Boom' excavator is designed specifically for the demolition of low rise buildings (up to five storeys high), bridges and industrial infrastructures. Its stick/boom configuration delivers a higher vertical reach up to 12.85m, 36% more stick pin height compared to the standard 352 'Reach' configuration. Accommodating up to 6t attachments, the machine now features standard Cat technologies for increased versatility, precision and efficiency in both demolition and excavating applications. The excavator's

new optional 11.35t removable counterweight design increases transportation efficiency and lowers transportation costs. The mechanical variable gauge undercarriage has a 2,990mm transportation width when needed and extends 500mm in working mode for maximum stability all around. Its new high efficiency hydraulic fan features standard automatic reverse to keep the cores free from debris and reduce maintenance time. Designed for demolition, the 352 Straight Boom features reinforced booms, sticks and frame, increasing machine durability. Standard Falling Object Guards (FOGS) protect the roof and front reinforced P5A laminated windows from falling debris during demolition, while also helping to maintain visibility on the jobsite. A full track guiding guard is also a standard feature.



Its 'Operator ID' function offers push button engine starting and programmable joystick functions that are remembered when the operator enters a unique ID. Standard 'Cat Stick Steer' simplifies excavator movements with single hand and push button operation of travel and turning. Offering automatic power increase when needed, standard 'auto dig' boost delivers better bucket penetration, shorter cycle times and greater payloads. 'Auto heavy lift' offers more lifting power when needed. Cat 'Lift Assist' makes the operator aware that the load is within the excavator's safe working range to avoid tipping. Standard Cat technologies to elevate operating efficiency include 'Cat Grade' with 2D that displays depth and slope in the cab on the 254mm touchscreen monitor. When excavating, 'Cat Payload' offers real time, on-board weight estimates to help achieve precise load targets. Payload can be combined with 'VisionLink' for the remote management of production targets, while 'Cat Product Link' provides critical machine operating data like location, hours, fuel usage, productivity and diagnostic codes to help increase jobsite efficiency and lower costs.

To easily detect objects and personnel around the operator in a single view, the 352 Straight Boom comes standard with rear view and right hand side view cameras, which can be upgraded to provide 360° visibility. Designed to easily power through all different types of material, the 352 Straight Boom features an electrohydraulic system and is powered by the proven 330kW Cat C13B engine. Three engine power modes – 'Smart', 'Power' and 'Eco' – help to match engine and hydraulic power to the task at hand to reduce fuel consumption and costs. 'Remote Troubleshoot' has been developed to enable the dealer to diagnose fault codes and machine issues remotely without interrupting the production cycle. 'Remote Flash' allows software updates to be pushed out to the machine and installed at a time convenient for the customer.

www.cat.com

BattPak 5048

Mobile power supply for
powering multiple applications



GÖLZ®



www.golzgroup.com



**Develon launches
New DX245DM-7 demolition excavator**

Develon (formerly Doosan Construction Equipment) has launched the new DX245DM-7 31t high reach demolition excavator, replacing the previous DX235DM-5 model. Powered by the DL06P Stage V diesel engine providing 129kW of power at 1,800rpm, the DX245DM-7 is part of a range of demolition excavators that also includes the heavier 47t DX380DM-7 and 61t DX530DM-7 models. Typical of the design of all of Develon's demolition machines, the DX245DM-7 has a high visibility, tiltable cab, particularly suited to high reach demolition applications offering a 30° tilting angle. Another key feature of the DX245DM-7 is a modular boom design and hydraulic lock mechanism on the machine. The innovative design has been developed for easy change between a demolition boom and an earthmoving boom to accomplish different types of work on the same project. A special stand is provided to facilitate the boom changing operation, which is based on quick change hydraulic and mechanical coupler connections. The multi boom design also allows the earthmoving boom to be mounted in two different ways, which with the demolition boom, provides further flexibility with a total of three different configurations for the same machine.

The DX245DM-7 equipped with the 18m boom can operate a demolition attachment at a maximum height of 16m. The recommended maximum combined weight for the attachment and quick coupler in this mode is 2.5t. When equipped with the digging boom in the straight configuration, the DX245DM-7 can work to a maximum height of over 9.8m. In this format, the recommended maximum weight for the attachment and quick coupler is 3.3t. Using the digging boom in the alternative bent configuration, the DX245DM-7 can work with an attachment to a maximum height of 8m. In this mode, the recommended maximum weight for the attachment and quick coupler is 3.3t. The DX245DM-7 has a hydraulically adjustable undercarriage, which extends to a maximum width of 3.74m

to provide optimum stability on demolition sites. The width of the undercarriage can be retracted hydraulically to 2.54m in the narrow width position, which is ideal for transporting the machine. The maximum pin height of the demolition boom on the DX245DM-7 is 18.07m. Like all Develon demolition excavators, standard safety features include a FOGS cab guard, safety valves for the boom, intermediate boom and arm cylinders and a stability warning system are fitted.

<https://eu.develon-ce.com/en/>

**Sennebogen unveiled
'830 Demolition' excavator at bauma**

Sennebogen used bauma 2022 to unveil its multifunctional 830 Demolition excavator. Weighing in at 48t, the machine has a maximum pin height of 23m and a remov-

able counterweight that can be detached at the push of a button. The 830 Demolition is ideal for work in cramped, inner city construction sites thanks to what the company says are the machine's state of the art, environmentally friendly engine technology, its compact dimensions, 360° swivel mode and various equipment options. The elevating cab, which can be tilted up to 30°, not only gives the operator an excellent view of the job site, but also keep the machine at a safe distance from the danger zone. Due to the machine's powerful hydraulics, it can accommodate a wide variety of demolition attachments. New 'longfront' equipment enables even greater distance from the structures being demolished, which further increases safety. The 830 Demolition easily reaches a height of 23m with the new articulated boom. Thanks to the removable counterweight, the 830 Demolition can be transported fast and cost effectively in three parts. A button on the remote control reduces the transport weight of the 830 Demolition by around 10t using the fully hydraulic ballast rack. In addition, the transport width of the telescopic undercarriage can be reduced to 2.9m.

www.sennebogen.com



A NEW DIMENSION IN SURFACE PREPARATION



REMOVE, PREPARE AND REFINE FLOORS GET READY FOR A NEW DIMENSION IN SURFACE PREPARATION

Introducing the former Blastrac surface preparation portfolio of scarifiers, scrapers and floor grinders under the Husqvarna brand. With even wider options, and as one passionate team, we are committed to shaping the surface preparation industry for tomorrow.



New product for abrasive cutting

Dynaset is bringing a new product to the abrasive cutting sector. The 'HAC Hydraulic Abrasive Cutting System' is an abrasive cutting system that is powered by hydraulics. The system is used for cold cutting applications in various fields of industry. For example, in the rescue sector, the HAC Hydraulic Abrasive Cutting System is used to extinguish fire safely through walls, doors, and roofs. As a rescue accessory, Dynaset also supplies a tool that allows users to spread firefighting foam with the system's pistol.

The system's pistol delivers high pressure water boosted with abrasive sand to the surface at high pressure. The pistol's control is carried out with wireless technology. The abrasive sand is added to the water stream directly to the pressure line, increasing its kinetic energy compared to systems where the sand is added to water in the pistol. As a result, the HAC Hydraulic Abrasive Cutting System is efficient. This means that users can cut through metal with 320bar while most cold cutting systems require 4,000bar.

The system has two abrasive material tanks, which means that while one is in use, the second can be refilled simultaneously thanks to Dynaset's patented valve structure. As a result, the work doesn't stop for refill. It also has an abrasive pistol and hose reel, patented Dynaset valves, and a hydraulic high pressure water pump. The system is powered reliably by the carrier vehicle or the machine's engine via hydraulics. The system requires hydraulics of 115l/min flow at 230bar.

HAC Hydraulic Abrasive Cutting System will become available for order in late spring 2023.

www.dynaset.com



TREVI BENNE AT SAMOTER

From the 3 to 7 May 2023, Trevi Benne will be exhibiting at the 31st SaMoTer International Construction Machinery Exhibition. Numerous pieces of equipment will be displayed by the Italian company in Hall 10 – Stand M3. The company's focus will be on demolition, recycling, earthmoving and forestry. A large space of the stand will be dedicated to welcoming customers, distributors and visitors as evidence of the spirit of hospitality that has always distinguished Trevi Benne.

Amongst the highlights at the show will be the re-styled iconic rotating pulveriser 'FR Series', now renamed

the 'FR-K Series', which is the first product developed with the Kinshofer Group. The FR 18K model, weighing 1,900kg is ideal for 20t excavators, will be on display. The series has a number of features making it ideal for demolition including a standard rotation with two motors in the FR 13K – FR 18K – FR 23K models; increased size of the fulcrum pins and cylinders diameters; creation of helical grooves in all pins for better distribution of lubricant. The speed multiplier valve has also been redesigned with a double oil channel to reduce the pressure drop and a specific system to avoid the unscrewing of the cartridge.



Senn AG acquires STZ-VP 3 low loader semitrailer

Senn AG, based in Oftringen, Switzerland, has acquired another Goldhofer low loader semitrailer for its transport division. The heavy duty tri-axle low loader is designed for a payload range of approximately 46t. The trailer is equipped with a tri-axle swing axle chassis and provides an axle compensation of +/- 300mm. This makes it suitable for use in extreme road conditions such as construction site entrances. The heavy duty combination has a 6,600 mm

long low profile deck that can be extended by a further 4,400mm as well as two additional pairs of extension beams of three and five metres in length. This means that long goods such as boilers or large machines can also be transported on the low profile deck. "With the new three axle heavy duty combination, we want to further expand our heavy duty transport division and increase our capacities," explains Jörg Senn, managing director of Senn AG.

Hillhead announces extension to Showground Pavilion

Hillhead 2024 will mark the launch of the renamed Showground Pavilion. Previously known as the Main Pavilion and extended for the 2024 event, the area will now be home to over 180 exhibitors, creating more than 1,300m² of additional indoor space. This will help to offset some of the space lost in the Registration Pavilion, which is being slightly reduced in size following visitor feedback. This will shorten the walk for visitors into the showground and also

create space for a dedicated exhibitor entrance structure.

Event manager Harvey Sugden explained: "For the last few shows we have been unable to meet the demand for internal space and with the Registration Pavilion at capacity, it made sense to extend the Showground Pavilion." He continued: "The structure will also house the newly designed Hillhead Café, which has been relocated to the centre of the site and will offer a wider range of

refreshments as well as an outdoor terraced seating area and a networking lounge serving fresh barista coffee."

Hillhead is also pleased to announce that it will be upgrading its air conditioning provision in both structures and will be working with a new supplier, Watkins Hire. Hillhead 2024 takes place at Tarmac's Hillhead Quarry, near Buxton, from 25-27 June. Expressions of interest should be directed to event manager Harvey Sugden.

»» THE WDS-SIBLINGS



**NEW:
WDS 250**

**AWARDED:
WDS 530**

GOOD NEWS FOR THE DEMOLITION INDUSTRY

OUR HIGHLIGHTS FOR GRINDING & DECOATING

- » Discover the new WDS 250. It is the wall and ceiling grinding machine for small rooms. Both WDS can now be operated with excavators.
- » Grind and strip walls and ceilings in all angular positions with the best possible health protection and reduced disposal costs.



More details
about WDS

+49 (0) 7161 2005 0
info@schwamborn.com
www.schwamborn.com

 **schwamborn**

...gaining ground with us!



AQUAJET INTRODUCES

'Aqua Cutter' 750V

Aquajet has announced the launch of its latest hydrodemolition robot, the Aqua Cutter 750V.

The new model introduces Aquajet's revolutionary patented 'Infinity' oscillation that moves the water jet in an infinity, or figure of eight, pattern, removing more concrete in a single pass while reducing shadowing, eliminating the risk of pipe holes and providing the ideal bonding surface. The 750V also features the next generation 'Evolution 3.0' control system that includes new functions, including the ability to automatically calculate optimal settings for lance motion for greater precision and efficiency.

Like all Aqua Cutter robots, the 750V cleans and descales rebar without causing micro fracturing. It is also designed to maintain horizontal, vertical and overhead reach, making it suitable for a wide variety of concrete removal tasks, such as renovation and bridge and road repair. Aquajet introduced the Aqua Cutter 750V at ConExpo-Con/Agg 2023, at the Las Vegas Convention Center. "Aquajet has always been at the forefront of hydrodemolition innovation," said Roger Simonsson, Aquajet managing director. "Infinity oscillation is the next technological evolution, and it is changing how hydrodemolition contractors think about productivity. In the coming years, we will see it replacing rotating lances and similar tools to become the new industry standard. With the productivity gains realised during customer testing, the Aqua Cutter 750V is a significant advancement for hydrodemolition."

The new machine has been developed to provide constant lance motion in an infinity pattern, rather than the standard wave pattern that has natural fluctuations in speed. The continuous movement of the figure of eight pattern allows the 750V to remove more material in a single pass, significantly reducing shadowing and making it unnecessary to follow up with hand lancing. Aquajet states that the consistent motion also increases

the digging effect and virtually eliminates pipe holes, resulting in a superior bonding surface and increased productivity. Another benefit is said to be the constant low noise that is less disruptive in urban areas and other noise sensitive environments. "Do you know what this level of performance means?" asked Alessandro Campa, managing director of Atümat, Aquajet's distributor in Switzerland, when he saw the 750V operate for the first time. "It's the biggest revolution in the history of hydrodemolition."

The Aqua Cutter 750V shares several similarities with Aquajet's innovative 'Ergo' system. The infinity power head has Ergo style spring tensioned rollers and quick connection to the roller beam. It also uses 'absolute' sensors, which means it automatically adjusts at the touch of a button. With a larger roller width and a new triangulated base frame for improved stability, the infinity power head contributes to precision while improving the hydrodemolition result.

As part of the revolutionary design, the Aqua Cutter 750V also includes an upgraded version of the 'Evolution Control System'. First released in 2004, this system still features Aquajet's patented 'Equal Distance System' (EDS) as well as the ability to cut shapes and remove concrete at different depths in the same pass. The new version ratchets up its performance even more with an oscillation menu that automatically calculates optimal settings for the operator. This not only maximises production from the machine, but also prevents miscalculations from manual adjustments.

Another key feature is remote start and stop of the diesel engine through radio remote control, making it possible for the operator to stop or start the robot from a safe distance eliminating the need for the machine to run all day. In addition, the machine will automatically

shut down if there's no activity for a certain amount of time, saving battery power. The engine control on the 750V offers increased power thanks to the automatic speed controlled throttle that automatically adapts RPM to the load. This is said to improve sustainability with lower fuel consumption and emissions.

The Evolution 3.0 Control System uses a visual status light to show the state of the machine with different colours. This allows operators to easily see when the machine is working correctly, when it needs attention and when automatic functions or the engine have stopped. The 750V also incorporates Aquajet's precision drive. This technology is said to provide highly accurate hydraulic movements, eliminating the inconsistencies that compromise the result. In automatic mode, the robot's lance is highly controlled and always keeps the water jet in the ideal position, which is key to achieving a perfect hydrodemolition result. With an all-new tracked system, the 750V has been designed to drive in a similar fashion to a car. The smooth motion increases service life by eliminating bounces that can compromise components and improves the accuracy of nozzle distance to surface, further improving precision.

The 750V is compatible with Aquajet's line of accessories, including the rotolance, circular power head and 'Aqua Spine'. It is also compatible with Aquajet's 'Ecosilence' high pressure pump that supplies the water to run the machine and provides a cost effective option for transport and storage. The purpose built, insulated container includes the pump, large capacity diesel engine and control system, with a convenient storage area for the robot and accessories. Finally, Aquajet's 'EcoClear' is a fully automated system that allows contractors to treat water onsite and release it or recirculate it in the robot.



No more
zig-zag!

Think **V**

United. Inspired.

How would you feel about digging a trench without having to go side-to-side to make it even? And save time, money, the environment and your carrier while doing so?

Sounds too good to be true?
Not with the new V Cutter. Think V!



epiroc.com/thinkV



CONEXPO-CON/AGG CRUSHES IT!

Throngs of attendees and exhibitors pour into Las Vegas for a sustainability oriented trade show.

Any doubts about the North American construction industry's post pandemic resilience were put to rest this March, as the 2023 edition of ConExpo-Con/Agg literally and figuratively overwhelmed Las Vegas. According to the organisers, the five day show (held in conjunction with the International Fluid Power Exposition) drew more than 139,000 registrants, a 6% increase over 2020's figure. More than 2,400 exhibitors of all sizes from 36 countries showcased their products and services across more than 278,700m² of space encompassing all four exhibit halls and several expansive outdoor demonstration lots.

Many of ConExpo-Con/Agg's product announcements and company news will be presented in more detail in this and future issues of PDi. For now, here is a sample of the many, many highlights from five action packed days in Las Vegas.

Turning up the juice on electric powered machinery

As is typical for a construction megashow, big equipment took centre stage. Sustainable power seemed to proliferate for manufacturers large and small. For example, Volvo Construction Equipment contributed its EC230

electric excavator pilot, the 'Zeux' autonomous concept wheel loader, and HX04 prototype hydrogen articulated hauler. Caterpillar featured four battery electric machines as well as a series of prototype batteries for off road equipment ranging from 48V to 600V.

Hyundai showed three compact excavators — HX35AZ, HX40A and HX48AZ— all of which feature a distinctive new 'Tiger Eye' design with large cabs, larger windows for increased visibility, and enhanced operator comfort. Specific models include load sensing hydraulics incorporating adjustable auxiliary flow, zero tail swing, and a new auto safety lock function to



prevent unintended use. Hyundai also used ConExpo-Con/Agg 2023 to debut its HS120V skid steer loader and HT100V compact track loader, representing the company's re-entry into these compact equipment categories. Perhaps the booth's biggest crowd puller however was the HW155H, a 2t, hydrogen powered wheeled excavator, developed in anticipation of a proliferation in fuel cell technology.

Komatsu is likewise trying to make good on its goal to have a fully carbon neutral product line by 2050. The 20t PC210LCE battery powered excavator, introduced at bauma 2022, made its North American debut with Proterra designed lithium ion battery technology that the company says delivers up to eight hours of operating time. A Proterra designed portable charging station was also introduced to facilitate jobsite recharging. At John Deere's booth, shared with Wirtgen, the company showcased three 'E-Power' battery electric machines: the 310 'X-Tier' backhoe, the 244 X-Tier compact wheel loader,

and the 145 X-Tier excavator concept. All are part of the company's drive to offer more than 20 battery-electric or hybrid machines by 2026.

More mini and micro mini equipment makers are getting in on electric power as well. Ausa unveiled its first zero emission electric dumper, the D151AEG. Powered by lithium ion batteries, the D151AEG can complete a full shift on a single charge. It features an integrated charger that can quickly charge the battery from 20% to 80% in just two hours. "We are extremely pleased with the results achieved at this year's ConExpo-Con/Agg. We came to the trade show with high expectations, but the response to our products, especially the D151AEG electric dumper, was even better than we had initially anticipated," remarked Ignasi Moner, Ausa US's CEO. "The dumper has a long journey ahead in North America; we have been taking innovative ideas and concepts over to North America for a number of years. Our machines are increasingly successful and popular in this market."

There were some new names amongst the battery powered models on display, including US based Voltec Equipment's 'Sky' which boasts 454kg lifting capacity, more than a dozen attachments, and remote control from up to 49m away. Firstgreen Industries of the Czech Republic offered the 'Elise 900', reportedly the world's first fully electric skid steer loader, with a lifting capacity of more than 1,180kg, and the 787mm wide 'MiniZ 400' compact track loader with a lifting capacity of 400kg. Another new name to the US market was Italy's Messerssi, whose zero emission line includes two electric powered tracked dumpers, the 500kg TC50e and the 1,200kg TC120e, to complement a variety of conventionally powered compact dumpers, mini excavators and loaders.

Manufacturers also found ways to expand their market footprints. Longtime electric mini equipment maker Avant Tecno announced the formation of a new subsidiary dedicated to manufacturing 'OptiTemp'



Autonomously delivering with Moog Construction.



Heavy duty shears in the VTN Europe booth.



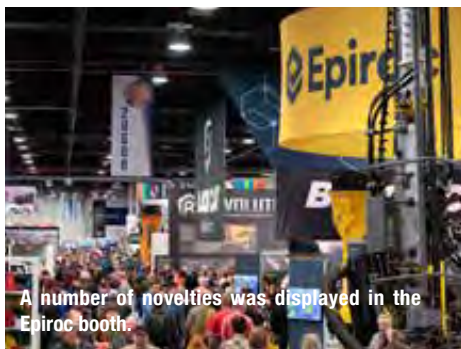
Breakers in the Rammer booth.



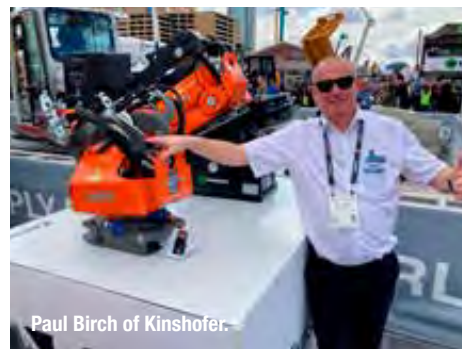
Montabert's recent acquisition of Tramac sees an expanded line of breaker boom systems and is now the exclusive US distributor of the Lehnhoff 'SQ-V Fully Automatic Symmetric' quick coupler system for 8t to 43t excavators.



Jose Caraballo Diaz from Mazio with his family.



A number of novelties was displayed in the Epiroc booth.



Paul Birch of Kinshofer.

battery packs featuring a unique thermal management system that will power machines such as the new e527 and e513 900kg loaders for an entire workday on a single charge. In addition, the company claims OptiTemp batteries deliver the same capacity across temperature extremes, and, with a special rapid charger, can be restored to nearly full power in just 90min. "After working with electric loaders and batteries for decades, we realised that there was no battery pack in the world that would be perfectly optimised for compact loaders. That's why

we decided to start making batteries ourselves," said Avant's Mikko Piepponen.

Totally automatic

'Develon', Doosan's rebranded construction equipment line, continued the rollout of new construction equipment line, with new additions including the 86.5kW DTL-35 compact track loader and 2t DX20ZE-7 electric mini excavator. Develon also showcased the latest developments in its 'Concept-X' autonomous

equipment solution. Called Concept-X2, the system includes a new DD100-CX dozer and DX225-CX crawler excavator with GNSS based driving and blade control, automated 3D grading with a tiltrotator accessory, enhanced machine learning based auto digging and loading, an integrated work planning algorithm and 'E-Stop' safety technology. Develon sees compact equipment models Concept-X2 as integral parts of plans to become a top five player in the U.S. construction market by 2025. Opportunities for Concept-X2 will

Floor Scrapers in suitable weight classes!



Your projects - our equipment - your success!

Janser GmbH
Böblinger Straße 91
71139 Ehningen

info@janser.com
www.janser.com

We exhibit on IRE:
Stand 2352



MOTOCUT Automated Pile Cutting Solutions



EXCAVATOR ATTACHMENTS FOR SAFE & FAST PILE CUTTING

TUBULAR STEEL PILES: Up to 630mm (24.8")
CONCRETE PILES: Up to 500mm (20")

- round ✓ - square ✓ - heavily reinforced ✓

Is your job different from usual?
We are ready to CUSTOMIZE!

Contact us at sales@motocut.fi



www.motocut.fi

sales@motocut.fi

likely begin in the mining arena, and gradually expand to other markets. Develon has also developed a prototype hydrogen powered machine and is now evaluating options for the necessary support infrastructure.

Honda is also getting in on the autonomous vehicle market, debuting its 1t capacity 'Autonomous Work Vehicle' (AWV), which employs sensors to operate autonomously, using GPS for location, radar and lidar for obstacle detection and cameras for remote monitoring. To help contractors better understand the 'brains' behind autonomous construction vehicle technology, motion control specialist Moog Construction provided a demonstration of a programmable autonomous compact track loader.

Moog director of strategy and partnerships, Joe Baldi, says the technology is well suited for such large,

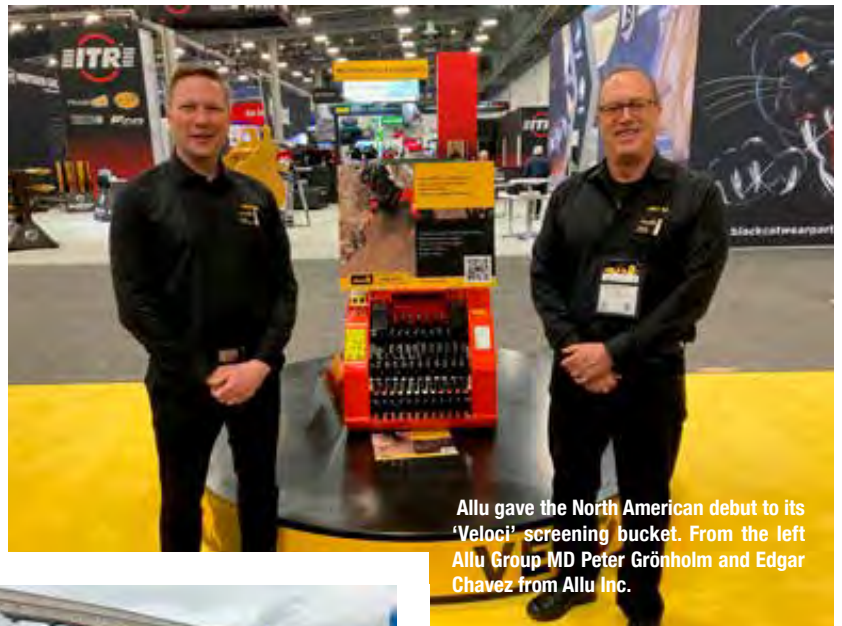
remote locations, as well as handling repetitive tasks. "Autonomously delivering material provides a more consistent process and ensures crews have what they need where and when they need it to keep projects on track," Baldi says. Moog's 'TerraTech' 'ecosystem' of software, digital connectivity, and advanced mechatronics products for all electric equipment design and development was featured in Bobcat's S7X all electric skid steer loader and autonomous concept machine 'RogueX', both which made their debut at ConExpo-Con/Agg, as well as the new T7X compact track loader, already in production.

But wait, there's more!

There was plenty of news concerning attachments, buckets, drills and shears. Montabert unveiled a new

four model line of boom and stick mounted demolition shears for carriers from 17t to 40t. The shears feature an oversize to cut the toughest materials, and an integrated speed valve helps to lower cycle times. The company also showcased the 'SD' hydraulic breaker series for carriers up to 12t. For aggregate producers, Montabert's recent acquisition of Tramac sees an expanded line of breaker boom systems and is now the exclusive US distributor of the Lehnhoff 'SQ-V Fully Automatic Symmetric' quick coupler system for 8t to 43t excavators. Another new tiltrotator option was featured at Kinshofer's booth, with the new TR045NO for 2t to 4.5t excavators. With a 2x45° tilt angle, the 150kg model can handle a breakout force of 40kN and tilt torque of 6.5kN.

At the Sandvik/Rammer booth, lifecycle manager for attachment tools Fernando Marques said the com-



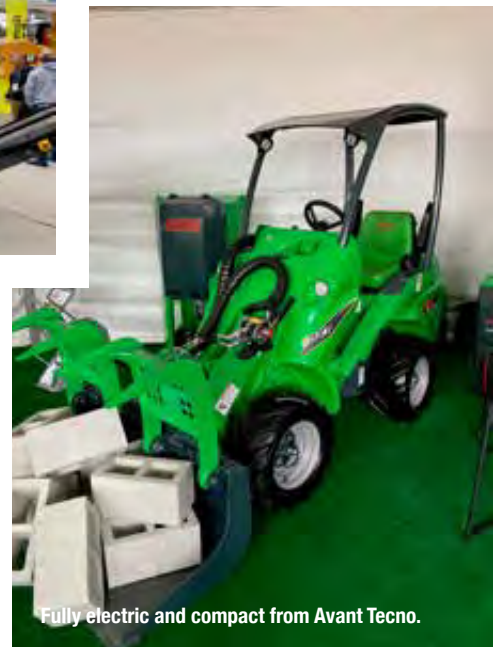
Allu gave the North American debut to its 'Veloci' screening bucket. From the left Allu Group MD Peter Grönholm and Edgar Chavez from Allu Inc.



Simex spotlighted the 'D-Blade 200', a floor saw with a diamond blade for linear cuts up to 200mm deep. In the picture Alessandro Ferrin from Simex in Italy.



The RubbleCrusher made in the UK.



Fully electric and compact from Avant Tecno.

TS40

Cut-off saw with NEW flush blade guard
For cuts close to the wall

WEKA®

Flush set with spacer
and cover plate

With optional dust extraction



More informationen at www.weka-elektrowerkzeuge.de

DO YOU WANT TO SELL THE FASTEST CORE BIT?



FIND OUT HOW TO
BECOME A DISTRIBUTOR

YOUR
BRAND
HERE

DQ | **DIAQUIP**
AT THE CUTTING EDGE

CORE BIT - SEGMENT TYPES



D5

DQ

ZPro

AeroFX

K50

Z1

WORLD LEADERS IN:

▶ CORE BITS

▶ DIAMOND WIRE

WWW.DIAQUIP.CO.UK SALES@DIAQUIP.CO.UK +44 (0)161 406 0609



pany has focused on optimising its hammer line for the different expectations of the U.S. market. “While noise is not as big an issue for most contractors as it is in Europe, there is a big interest in ‘plug and play’ attachments that will get maximum power from the smallest size,” Marques explained. Rammer has beefed up its line of rotary and static pulverisers with hoses and connections, new jaw patterns, and automatic greasing systems.

Versatility was also a common theme for Italian attachment maker Mazio, which now boasts engineering facilities in the Florida and Columbia and offers lines of crushers, pulverisers, multi processors, new tiltrotators that not only rotate 360°, but also side to side. Mazio is also building a presence in the telematics market with the ‘Derek’ advanced asset management system. Sales

director Jose Caraballo commented: “It has global connectivity, which means that owners can get product data no matter where the machine is located.”

Epiroc presented a preview of its new ‘SmartROC T25 R’ drill rig with a remote control system and digital functions designed to improve efficiency and help to reduce the rigs’ climate impact. Epiroc’s upgraded SmartROC T40 topammer rig has been developed to consume less diesel than any other diesel-hydraulic rig in its class, according to the company. There was also the new DTH 5 hammer that Epiroc says offers twelve configurations. Aiming to capitalise on substantial US government investment in transportation infrastructure construction, Simex spotlighted the ‘D-Blade 200’, a floor saw with a diamond blade for linear cuts up to 200mm deep. Simex says its clean and burr free cut

produces minimal waste material and avoids trench deformation, facilitating the filling phase and ensuring restoration quality.

Allu gave the North American debut to its ‘Veloci’ screening bucket. All five Veloci size models utilise polyurethane screening stars that create a rotating motion inside the bucket, screening and mixing the material. Veloci models also feature a double skin floor for use in demanding environments and/or dealing with demanding materials. Also new was Allu’s variable drum (‘VD’) that allows users to quickly replace blades without the need to open the chain box.

For larger crushing needs, UK based RubbleCrusher made its North American debut at ConExpo-Con/Agg with its portable pull behind RC150V jaw crusher, and its track mounted counterpart, the



MB America CEO Regan Whitfield introduces company's new HDS220 padding bucket.



A great show for the Trevi Benne team.

Pentrunder



EQUIPMENT BUILT TO LAST

All Pentrunder products are made in Sweden with pride and precision. We produce precision parts in-house, from the best materials, in state of the art production machines. With over 35 years of experience from designing concrete cutting equipment, we know how to build high performance, durable systems. The Pentrunder equipment is only sold by our authorized Pentrunder distributors world wide.

Find out more on: www.pentrunder.com

Pentrunder[®]
CONCRETE CUTTING SYSTEMS

Designed and manufactured by:
Tractive AB | Gjutargatan 54 | 781 70 Borlänge | Sweden
Tel: +46 (0)243 221155 | E-mail: contact@pentrunder.com
www.pentrunder.com





Opening ceremony of the biggest Conexpo-Con/Agg ever.

RC150T. Both feature a hydraulically driven jaw allowing the crusher to be run both forward and in reverse, making it easier to clear blockages and process sticky asphalt material. Leguan debuted its '225 lift', specially designed for outdoor work and challenging terrain. The company's largest spider lift to date, the 225 can elevate 250kg to a working height of 22.5m, with 110° of platform rotation.

Taking the long view

If nothing else, ConExpo-Con/Agg attendees left Las Vegas with a good look of the construction industry's not so distant future; one in which alternative power sources and technology take a greater role, but also one

that still requires the human touch. Artificial intelligence can do a lot, but goes only so far. And, there's still no robot yet that can deftly scope and make a perfect cut with a concrete saw, or determine the next move with an excavator. Some changes are happening incrementally, others have made great leaps (witness the aforementioned preponderance of electric and battery powered equipment). What might have been a prototype or even simply talked about concept this year might well be in full production the year when ConExpo-Con/Agg reconvenes in 2026.

The key, it seems, is to be ready for anything. At least that's the approach that powertrain manufacturer FPT is taking. As the heart of most everything that moves,

engines and transmissions might seem to be the last component to undergo significant change. Yet Braden Cammauf, FPT's brand vice president for North America said that the company already has an 'e-power' line-up in the works, even as it continues to customise gasoline and diesel models for its customers in a variety of unique industries. What provides FPT with a valuable degree of nimbleness, Cammauf said, is a recognition that its business is not simply about powertrains, but power itself. "We of course watch trends across economies and industries, and will make decisions as technology evolves," Cammauf commented. "Being aware, being ready, and bringing solutions to the market when they're needed is how you build loyalty, and build success."

COMMITTED TO FLOOR GRINDING AND POLISHING TECHNOLOGY

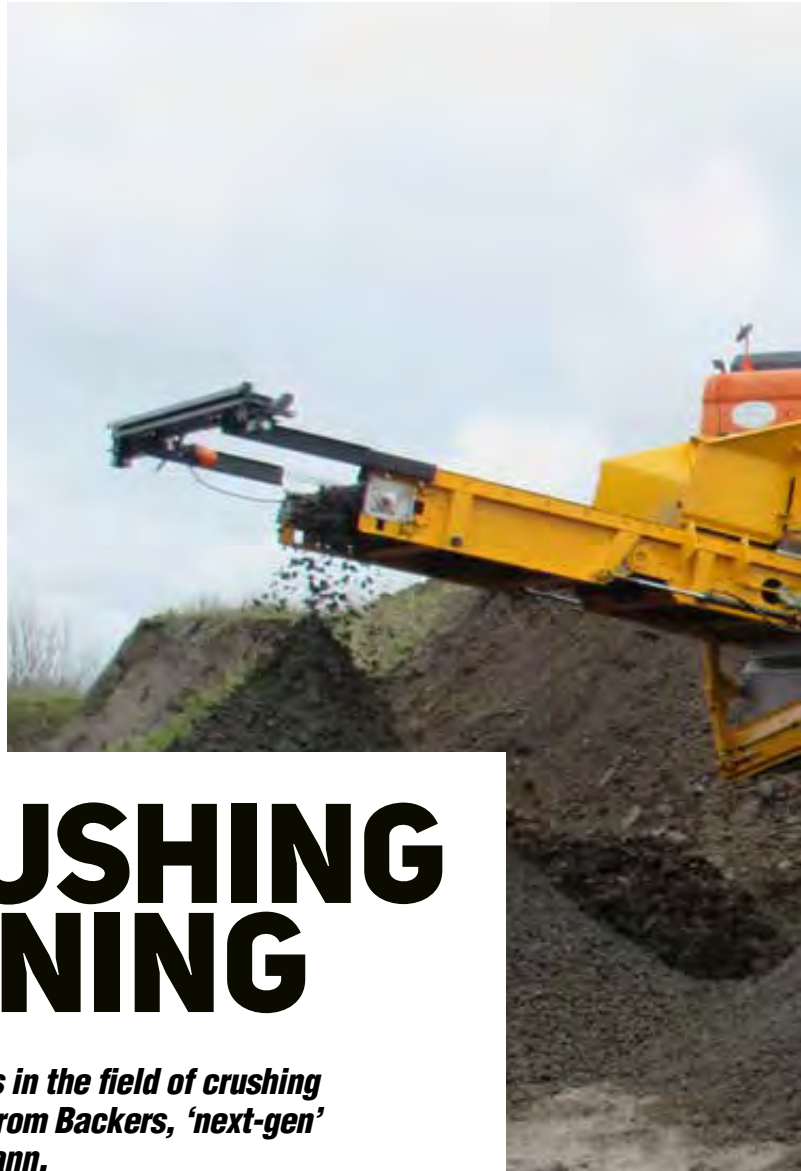
www.ashinediamondtools.com



With a strong R&D team, consistent quality,
and professional customer support,
Ashine enhances customer advantages in market
competition to strengthen long-term collaborative partnership.

ASHINE
Grinding & Polishing Expert

EVERYTHING NEW IN



MOBILE CRUSHING AND SCREENING

A wide variety of brands are launching new products in the field of crushing and screening. A few examples being a starscreen from Backers, 'next-gen' equipment from CDE, and new stackers from Kleemann.

Three fraction starscreen from Backers

Backers' three fraction starscreen can, as the name suggests, screen in three fractions, or four with bar or grizzly screen. Coarse fractions fall off in the front, while medium and fine fractions fall to the rear and side. The model can screen cohesive soil with a high throughput, according to Backers, and after a short modification, it can be used as a screening and mixing machine and for the production of stabilised and liquid soil. For this, the fine screen must be replaced by a binder container. Both the sieving, and sieving and mixing machine, are designed to be used for areas of 700m² or more. The excavated soil is filled into the bunker and screened with the starscreen set at 60mm or finer. The soil falls loosened onto the lower belt, is weighed by the belt weigher, and conveyed to the blending station. Based on the belt weigher, the binder is fed from the binder container. It is mixed with the sieved and loosened soil by a hammer roller, and remaining agglomerates are broken up. Only as much compound as needed for the application is

mixed into the soil, which is usually 1%-3%. Less can be carried out onsite, in accordance with BBodSchV. An output of up to 250t/h is possible when producing stabilised soil, according to Backers. The screening and mixing machine generates compressed air with which the binder is conveyed from a storage silo to the binder container. When the soil-compound mixture is transferred, water is pumped into the truck mixer. The liquid soil is produced in batches, documented with a delivery note, mixed in the truck mixer, and then poured.

Lindner's 'Urraco 4000' Series

Lindner's mobile Urraco 4000DK twin shaft shredder and the 'Zeta Star 4000DK' screen were showcased at the RecyclingAktiv trade fair in Karlsruhe, Germany. Lindner's mobile shredding solutions feature location independent flexibility and application options, being designed to deliver results ranging from efficient volume reduction to the production of specific, homogenous particle sizes. The Urraco 4000 diesel models

are equipped with a Scania engine, while the models with Abb's e-drive feature an independent power unit which makes it possible to move the mobile e-shredder without a power chord. Different cutting systems can



Photo: Lindner Recyclingtech.



be used for various particle sizes depending on the input material. Since Lindner's patented cutting system shreds particles to a homogenous P100 size in the first production step, the system solution consisting of the Urraco 4000 and the Zeta Star 4000 is used to archive particle sizes in accordance with classification P63 F5 in line with EN ISO17225-1. For mobile shredding, the service packages, 'Shaft Reconditioning – Mobile', the 'Urraco Filter Package' and associated services are available. The Urraco Filter Package includes engine and hydraulics maintenance.

'CBF' and 'CBF-L' crusher buckets from CM

CM's new CBF and CBF-L Series crusher buckets reduce the volume of inert material directly on site. They work synergistically with CM's 'CBR' series screening bucket which has been renovated with the basket lengthened by 80% depth wise and increased in diameter. As a result, the surface area of the basket is increased. The CBF-L Series is applicable to skid steer

loaders, mini excavators, and backhoe loaders from 3t to 12t, while the CBF Series is applicable to excavators and wheel loaders from 10t to 45t. They have been redesigned structurally, mechanically and productively to meet the standards of the market. The CBF's have a lower structure, resulting in greater penetration force in



the loading phase and better weight balance, according to CM. The mouth is wider, which allows the crushing of blocks with larger dimensions than previously. The eccentric unit has been revised with increased with oversized bearings, and the transmission and flywheels have been increased in diameter and weight to provide more inertia while working. In the new CBR screening buckets, the basket consists of interchangeable bolted grids, and the basket grids are produced from 10mm to 150mm. None of the models requires a drainage line, and all models are birotary with speed adjustment in both directions.

New developments from Screencore

Screencore has broadened its scope to produce a range of dual power crushers and mobile pugmills. The company offers a range of mobile – and now stationary – crushing, screening, stockpiling and pugmill solutions. "While our product line has expanded to encompass the formidable 237 trommel and the 30t Trident 165 scalper,



our fundamental concept remains consistent: simplicity of use,” says company director Ciarán Ryan. “This is evident in features like hassle free transport, swift setup time, intuitive control systems, and distinctive design elements such as full-sized bottom decks on scalpers or augers within the trommel hoppers.” The Screencore Boxer pugmill for precision mixing, blending and dosing has been added to the Screencore range. As part of its development strategy, Screencore has also put together a global distributor network. “The team has been able to channel customer feedback directly to the design and manufacturing process to ensure that we keep abreast of real customer requirements.” Screencore is also planning future releases for the short, medium and long terms. “In the coming months we will properly launch our 30t ‘XJ’ dual power jaw crusher and other exciting new developments,” concluded Ciarán.

Kleemann’s new ‘Mobibelt’ stackers aid worksite logistics

Kleemann’s Mobibelt mobile stackers are used to improve worksite logistics processes. They extend the action radius of crushing and screening plants, making large stockpiles. In modern crushing and screening, machine operators have a strong influence on product quality and daily output since they control the input with their excavators and wheel loaders. Users also coordinate the final products by means of building up stockpiles, intermediate storage areas and loading. With the new Mobibelt models MBT 20(i) and MBT 24(i), site logistics can be organised and adapted to the respective situation. Both stackers are equipped with a 1.25m³ feed hopper comprised of ‘Kleemann Resistant Steel’, which permits the feeding of material with an edge length of up to 200mm. An optional hopper extension up to 2.5m³ is provided with an additional impact bar that prevents direct impact of the feed material on the conveyor belt. Thanks to the hydraulically adjustable feed and discharge height, the stackers can be used behind screening and crushing plants with different discharge



heights. The stackers feature the ‘Spective’ operating concept, which offers support with a central operating position, local operation and the option of troubleshooting help via ‘Spective Connect’.

CDE showcases next-gen equipment

CDE showcased its next generation of waste recycling equipment at ConExpo-Con/Agg and launched the latest addition to its range of ‘Infinity’ high frequency dewatering screens. The range features no welds in the sidewalls, a galvanised structure, and a ‘VibroSync’ drive mechanism. The P2-168 Infinity screen, the largest model in the range, has a processing capacity of up to 750t/h and has been designed for the

US market. The screen decks have a surface area of almost 17m² and are reinforced at the centre point, which serves to strengthen the screen and provide flexibility to produce up to six in spec products simultaneously, according to CDE. The company has also introduced its next generation of its ‘AggMax’ scrubbing and attrition system, which features a spiral alignment of its paddles that helps handling abrasive feedstocks, according to CDE. It combines feeding, scrubbing, screening and sizing on one chassis, and can produce different materials. AggMax 253SR features greater modularisation and improved access to pumps and other components. In other news, the ‘Counter Flow Classification Unit’ (CFCU) for density separation allows for separation of two materials of differing relative densities and features a variable cut (separation) point. The CFCU 300 is the biggest in the range and includes a dart valve. The



‘EvoWash’ sand classification and dewatering plant uses hydro cyclone technology to deliver control of silt cut points. The EvoWash 201 is one of the largest in the CDE range and is designed to process around 200t/h of feed material. The ‘ShearClean Attrition Cell’ provides contaminant removal through material scrubbing, and the DS120 is developed for high tonnage operations.



**GET THE
RED
CRUSH!**

SCRAP

- ✓ MAXIMUM PERFORMANCE
- ✓ LOWEST OPERATIONAL COSTS
- ✓ HIGHEST RELIABILITY





Keestrack releases new impact crusher, cone crusher, and more

Keestrack has introduced its new tracked mobile horizontal reversible impact crusher, I4e, for secondary and tertiary crushing. The design allows feed sizes up to 250mm and ensures end products of 0/2mm in closed circuit. Secondary and tertiary crushing can be combined in one mobile solution, and the I4e offers production capacities from 100 to 250t/h. The model features the 'Zero' drive concept, backed up by the drop-off engine/gen-set with a 447kW diesel engine and 300kVa generator. Electric drives for the crusher, feeders, conveyor belts and system hydraulics enable cost efficient and emission free plugin network operation, according to Keestrack. When metal is detected, the reversible loading conveyor reverses and the drum magnet separates the metal. The system includes a single deck after screen with a return conveyor for oversized material.

Keestrack also presents the 'H7e Zero' cone crusher, characterised by a height of over 7m, a total weight of 92t when fully equipped, a cone crusher of 26t, and options such as double deck pre-screen and a triple deck after screen. In case there is no electric plug-in connection, it can be driven by the M7 tracked engine unit. The model has a capacity up to 415t/h and is driven by a 330kW e-motor. Another Zero drive development is the 'B7e Zero' jaw crusher. Without an onboard combustion engine, the B7e is driven by electromotors only. The model has a double deck pre-screen and is equipped with a patented 'Non-Stop' system.

In other news, the R5e impactor is now available in full electric plug-in Zero mode and can be powered via a drop-off engine/gen-set unit. The model can be transported in one piece even equipped in closed circuit. The impact crusher is driven by a 200kW motor, whilst the optional double deck 'precision' screen can be placed

in closed circuit, and the middle and fine fraction can be stockpiled as an additional option. The model can power other machinery with its plug-out functionality. The new M5 tracked engine/generator unit can supply connected Keestrack crushers, screeners and stackers directly with electricity in case there is no plug-in connection from the grid. The new electric tracked apron feeder A6 functions as a buffer with its 15m³ hopper and makes sure the following machine is evenly fed with material. Other news includes the K3 scalper and a K5 with 'Bivitec' screen, followed by the semi static electric S1e stacker, the two-shaft shredder P3, and the R3e impact crusher which has a double deck after screen, complete with the dust suppression cannons W4 and W7.

New hybrid scalper and digital solution from Rubble Master

Rubble Master's new H50X hybrid scalper saves up to 50% on fuel in a hybrid crushing and screening train, according to Rubble Master. As a hybrid variant, the screen can be operated electrically whilst also providing modularity. RM hybrid systems are said to achieve fuel savings of up to 25% in stand-alone operation and up



Photo: Rubble Master.

to 50% when linked together and are flexible thanks to modularly combinable crushing and screening trains. When a diesel-direct crusher drives the new RM hybrid screen, the customer saves up to 33% on fuel, and in combination with an RM hybrid crusher which drives the RM hybrid screen, the savings potential reaches up to 50%, according to Rubble Master. If only one engine is running because the crusher is driving the screen, the customer only has to refuel and service one engine. In other news, Rubble Master has developed its digital solution 'RM XSmart', which is designed to provide operators with an overview of all machines, receive machine data and save time evaluating the situation. RM XSmart is available as a mobile app and web app.

Micro crusher line-up from Senya

Senya Crushers has introduced its new 'Micro Crusher' line-up, described by Senya as delivering massive crushing power on a small chassis. In a press release, Senya writes: "Hardness of material is a non-issue on our Micro crushers. We insist on them being way overbuilt which has been no small engineering feat, fine-tuned over years of development and improvements. This translates into maximum productivity, durability and longevity, and low operation and maintenance costs which are literally negligible with our machines."

The Senya 3 delivers a capacity of 200-300t per day on less than €50 in fuel, according to Senya. The move of production to the US has allowed for DOT approved VIN'd chassis, and the heavy-duty suspension and wheel upgrades allow the operator to drive on the highway on tyres rated up to 60kph. All of the Micro plant accessories (screen plants and Micro conveyors) run on a Yanmar engine powered generator, and Senya also offers a step-down transformer embedded in the machine, giving onsite 40A 200V and 20A 110V power for welders and electric hammers.

TOPTEC

SPEZIALMASCHINEN GMBH

TOPTEC Spezialmaschinen GmbH
REMOTE CONTROLLED DEMOLITION ROBOTS
Breithornstraße 10 · D-81825 München
E-mail: info@toptec-germany.de
Tel.: +49 (0) 89 - 42 72 05 50



www.toptec-germany.de



NPK 

A symbol of quality
products worldwide



Inventor
of the
Booster
Technology
www.npke.eu



All NPK attachments are designed, built and backed by NPK



Hyundai Doosan Infracore to mass produce hydrogen internal combustion engines

Hyundai Doosan Infracore (HDI) has accelerated engine development after finishing the design of its hydrogen internal combustion engines (hydrogen engines) and rolling out the prototype. The hydrogen engine under development is an 111 class engine that produces a power output of 300kW and a torque of 1,700Nm at 2,000RPM. It satisfies Tier 5 / Stage 5 / Euro 7 regulations which require the emission to be 90% reduced to the current level to meet Zero CO₂ (below g/kwh) and Zero Impact Emission (Zero Emission in EU).

Hydrogen engines are powered by low purity hydrogen, making them durable, economical and energy dense, which makes them the most suitable engine system for mid to large sized vehicles and vehicles for long distances. A single charge of 10min enables a distance of up to 500km to be travelled, and they are said to be 25%-30% more economical than fuel cells or battery packs when vehicle price and maintenance costs are considered.

HDI plans to leverage its existing engine technology and facilities to reduce costs and accelerate commercialisation. The new hydrogen engines will be installed on commercial vehicles such as trucks and large buses, and construction equipment for validation by 2024, with full scale mass production being planned for 2025. HDI showcased various products including H2ICE, EV battery packs and plugin full hybrid powertrains at ConExpo-Con/Agg.

HDI's head of the Engine Department, Kim Joong-soo, said, "Hydrogen internal combustion engines will be used in mid to large sized commercial vehicles such as trucks, buses and construction equipment and mid to large sized power generators. We will put in the utmost effort to realise carbon neutrality in response to the eco-friendly market by developing green hydrogen related technologies in line with increasingly strict carbon emission regulations."

EPIROC HEXAGON PICKS FOR DRUM CUTTERS

As an encore to the introduction of its 'V Cutter' (patent pending), Epiroc now presents 'HexPicks', a new range of picks with hexagonal bodies for all types of drum cutting equipment.

The secret for easier maintenance is that unsticking or replacing HexPicks can be done quickly and easily with a hexagon wrench. Epiroc reports that HexPicks are also more durable and will last up to 20% longer than all competing products. They have been developed as traditional picks stick and stop rotating and it's often necessary to spend time with a hammer making sure they are all rotating freely. Also, working in rock or concrete, it's unavoidable that picks wear out, and replacing them onsite is hard and time consuming work.

More uptime, lower operating costs

According to Epiroc, the unique design of HexPicks (patent pending) is specifically intended to contribute to faster and easier pick maintenance and replacement. Instead of using a hammer and a degree of force, HexPicks can be unstuck or replaced on the jobsite with very little effort using a standard hexagon wrench. In addition, HexPicks come with the Epiroc's 'QuickSnap' retaining system which has been designed to provide savings in time of more than 50% when compared with normal circlips or knock on retainers. The smart retaining clips enable the picks to be changed in a matter of seconds. This all adds up to more uptime and lower operating

costs, with other benefits being that the HexPicks' design also protects the drum's pick box and allows better rotation, which optimises the pick re-sharpening process.

High performance materials make picks extra durable

HexPicks are said by Epiroc to last 20% longer than competing products thanks to the materials used in their manufacture. The heart of the cutting operation is a stress resistant tungsten carbide insert brazed into the body of the pick. Manufactured in a sintered material made up of tungsten carbide with a cobalt binder, the insert is designed to withstand the extreme stresses caused by continuously impacting the rock. The head and shaft of the pick body are made from optimised heat treated steel and serve as the support for the tungsten carbide insert as well as providing protection for the pick box.

Ideal for all drum cutting equipment

Only available from Epiroc, HexPicks are suitable for use with transverse drum cutters, V Cutters and longitudinal cutters. From 2023, HexPicks are standard for all deliveries from the Epiroc factory.



NEW 'MOBIBELT' STACKERS FROM KLEEMANN

Kleemann's new mobile Mobibelt stackers have been designed to aid efficient logistics processes on work sites. They flexibly extend the action radius of crushing and screening plants, making large stockpiles thereby helping to improve work site logistics.

Nowadays modern crushing and screening plants regulate material streams within the plant, to a large extent automatically. Nevertheless, machine operators still have a strong influence on the final product quality and the daily output. They control the input with their excavators and wheel loaders, i.e. the loading of material. Users also play the main role with regard to output as they co-ordinate the final products by means of building up stockpiles,

intermediate storage areas and loading. Kleemann's new Mobibelt stackers (MBT 20(i) and MBT 24(i)) assist with logistics as they can be organised flexibly and adapted to the respective situation.

Short setup times and high feed capacities

Both stackers are equipped with a 1.25m³ feed hopper made of resistant 'KRS' (Kleemann Resistant Steel), which permits the feeding of material with an edge length of up to 200mm without any problems. An optional hopper extension up to 2.5m³ is provided with an additional impact bar that prevents the direct impact of the feed material on the conveyor belt and thus reduces wear. Thanks to the hydraulically adjustable

feed and discharge height, a fast setup is possible and the stackers can be used flexibly behind screening and crushing plants with different discharge heights.

Comfortable operation

The operation of the mobile stackers is less complex than crushing plants and has been designed to be simple and convenient. The MBT 20(i) and MBT 24(i) also have the 'Spective' operating concept that makes the intuitive operation of the machines possible. During a typical workday, the operator receives support with a central operating position, local operation and the option of troubleshooting help via 'Spective Connect'.

DEMOLITION SHEAR HYDRAULIC BREAKER



DURABILITY
VERSATILITY
PERFORMANCE



www.arden-equipment.com

+33(0)3.24.33.64.30



HERE ARE THE NEW

super breakers for 2023

PDi Magazine's special feature on new hydraulic breaker releases.

As usual since 2000, PDi Magazine has in its second issue of the year published a special feature on new hydraulic breakers released to the market. A lot of things have happened to boom carried hydraulic breakers since then concerning power, speed, economy and environmental aspects. Also, for this year's special issue, we have a number of news items to share from manufacturers.

New 'Beilite' breakers from ACDE

At SaMoTer 2023, ACDE from Switzerland is introducing the new 'Beilite Europe' BLTB-3 series of heavy duty hydraulic breakers from 85kg to 5,845kg, for excavators from 0.8t to 100t. The company says that the breakers are built to meet the demands of even the toughest demolition, construction, tunnelling and mining projects. The series is engineered for maximum power and efficiency, speed and effectiveness. The range encompasses a variety of models to suit a variety of applications and industries, from small residential projects to large scale commercial demolition. The Beilite range includes: Beilite Europe BLTB-40-3 to BLTB-85-3 for light to medium demolition jobs, as well as foundation drilling, rock excavation and concrete demolition. Beilite Europe BLTB-100A-3 to BLTB-165-3 which are mid-sized breakers for larger demolition projects including

rock excavation, foundation work and tunnelling. And Beilite Europe BLTB-175L-3 to BLTB-210-3 which are heavy duty hydraulic breakers for the toughest demolition, tunnelling and excavation projects.

The BLTB-3 series hammers are now equipped with 'BLTB-Lube' auto greasing system for all hammers from BLTB-85-3. While the BLTB-2 Series has the option to be retrofitted with any common greasing system, the BLTB-3 series is by default equipped with the new automatic greasing system. The new BLTB-

Lube automatic greasing system works best with the 'BLTB High Performance Chisel Paste' coming in 400ml cartridges. From the BLTB-100A-3, special dedicated air channels for underwater works are machined into the cylinder. The connection for the compressed air is located on top of the hammer next to the hydraulic oil connections providing professional installation and safe operation for underwater works. Also, the heavy breakers, from 175L-3 to BLTB 210-3, are equipped with air connections whilst a version is available for dedicated underwater piston. The ACDE stand at SaMoTer 2023 will be located in hall 9, booth 16.

www.acde-europe.com



Arden's wide range of breakers

The Arden Equipment range of hydraulic breakers is called the 'AB' series and contains 19 different base models. For large and small jobs, the breakers are adaptable for work with excavators ranging from 0.5t to 100t. Designed with simple and reliable mechanics (only two moving parts), maintenance is easy thanks to the effective lubrication system the breakers are fitted with. Except for the AB082 and AB0102 models, they all have a soundproofed anti-abrasion steel casing, as well as a rebound energy recovery system. An automatic lubrication kit can be installed on models from the

**POWER TO
ACHIEVE**

Efficient tools for a full range of construction applications.

SB9



Dry wall
Wall sander

DD160



HVAC

DM52D



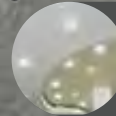
Pellet stoves
Fireplace exit

C14 / C16



Garden tiles
Clinkers

DD160



Lighting

G5



Floor preparation
Pool renovation

TC402



Floor tiles
Wall tiles
Banisters

DM52D



Kitchen hoods
Laundry dryer
Ventillation exits

DMC160



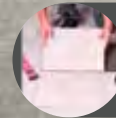
Sanitary pipes
Sanitary

CG150



Electrician

SCS7



Floor tiles
Worktop

AGP[®]

AGP Europe
+32 53 21 62 22
info@agp-powertools.eu
www.agp-powertools.com

AGP Taiwan
+886-5-5518689
info@agp-powertools.com
www.agp-powertools.com

Scan For More
Information





AB0852 to the AB4052. This option has a very short payback time (no manual lubrication and therefore less operator time wasted). Arden breakers have been designed to withstand all types of challenges whilst different models exist depending on the weight of the carrier and the work to be done.

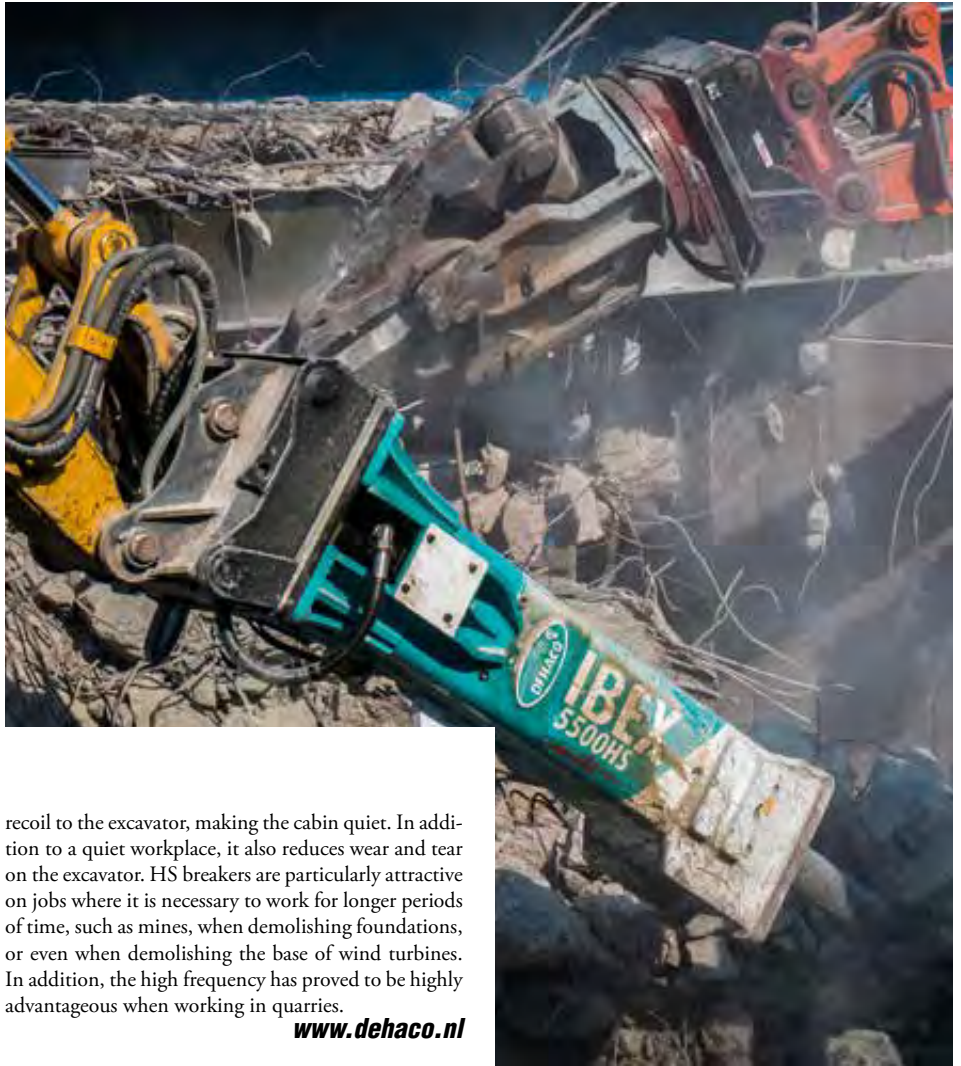
www.arden-equipment.com

'IBEX' from Dehaco

In 2013, Dehaco launched its IBEX series which have proved popular with demolition companies around the world since day one. The 'GS' series is particularly well known, but Dehaco also has an 'HS' series of breakers as an alternative to the traditional gas breaker. But what is the difference between GS and HS? How do you choose between the different models? The GS and HS series are both high quality breakers and are both suitable for the job. But this is where the similarities end. Both types work in different ways, use different components and have a different appearance. Breakers from the GS series are designed for use with excavators from 800kg to 60t, while breakers from the HS series are better suited for use with excavators from 30t to 100t.

The GS breakers are designed to deliver high impact energy. Once hooked up to a properly adjusted carrier the series can be used for all kinds of work. The power produced is due to the nitrogen chamber that is present. It makes use of the recoil of the breaker, storing energy until it is needed and converting it into additional impact energy, similar to a regeneration system in an electric car. In addition to the extra impact energy, the nitrogen chamber also ensures that less vibration is transmitted back to the excavator. GS hammers are suitable for all types of both major and minor demolition jobs.

HS breakers have a number of smart features including built-in safety features that prevent the breaker from being overloaded. This allows maximum oil supply efficiency with all of the breaker's energy being converted into impact energy. Smart valves have been designed to ensure that the breaker strikes constantly, which is good for the operator and avoids unpleasant surprises on the job. The HS models also require less maintenance due to the absence of a nitrogen chamber. The design of the breaker and its suspension are designed to reduce the



recoil to the excavator, making the cabin quiet. In addition to a quiet workplace, it also reduces wear and tear on the excavator. HS breakers are particularly attractive on jobs where it is necessary to work for longer periods of time, such as mines, when demolishing foundations, or even when demolishing the base of wind turbines. In addition, the high frequency has proved to be highly advantageous when working in quarries.

www.dehaco.nl

'Lekatech's fully electric breaker is up to 60% more efficient'

Lekatech's mission is to revolutionise hammer and other attachment technology. The Finnish start-up company



firmly believes that direct electric drive is the future in hammer technology. Lekatech's fully electric hammer is said by the company to be up to 60% more efficient than a conventional hydraulic hammer providing significant energy savings while doubling impact force, whilst the fully electric hammer enables continuous digital development. "Our goal is to zero out the CO2 emissions of impact hammers used in mining and construction industry," says CEO Antti Anttila at Lekatech. Lekatech Oy in Kausala, which is the southern part of Finland, is a technology start-up founded in 2018. Lekatech's linear electric technology for hammering applications aims to revolutionise different end products in the mining and construction industries. In 2021, Lekatech secured €6.3M in EIC Accelerator funding for the development of the fully electric hammer.

www.lekatech.fi

The new 'HB' series from OSA

OSA hydraulic breakers are said to have innovative and avant-garde characteristics to meet the requirements of the market. The new HB hydraulic breakers series has been designed with a system of inner control valves that, compared to the old system with external valves, enables the provision of bigger force of impact, makes the speed constant at high temperatures and protects the valves from hits. The new HB series has a simple and interesting design thanks to the re-planning of the tie rods and to

Recycling **AKTIV**

RATL

Tiefbau **LIVE**

The Demonstration Trade Fair

27 – 29 April 2023

Karlsruhe Trade Fair Centre

Secure
tickets
now



ratl-messe.com

messe
— karlsruhe



the above mentioned system of the inner valves. This is an 'intelligent' system that automatically recognises the presence of solid material under the chisel. When the chisel is permanently on the rock, the hydraulic breaker piston starts moving, releasing all its energy and hitting the chisel. On the contrary, the piston doesn't start moving, avoiding in this way 'empty blows' and preserving not only tie rods and bushes, but reducing the vibrations released on the excavator and the operator. The series also comes with a shock absorber system for noise reduction and a dust protection system for long duration work. The medium-heavy series has been designed to maintain and improve the concept of the hand variable hit, meaning that the operator, with a simple manual regulation, can modify the relation frequency/energy of the hit. It also means that when the material is very hard, the operator can reduce the number of hits and increase the energy. When the material is less hard, it can increase the frequency with a simple regulation, reducing the energy discharged on the chisel.

www.osapinze.it

The new XP3800 from Promove

Promove Demolition has had a continuous market presence since 1989 when the company was founded. Promove states that it likes to keep a very close relation with its end users, taking in mind their needs and striving to make their work faster, more efficient and safer. This is the way Promove's new breaker XP3800 has been designed and manufactured, fitting excavators ranging from 37t – 60t in weight.

According to Promove, the new breaker has all the features that make it very attractive to the market. It is said to have an exceptional weight/performance ratio and is able to adjust the working frequency/impact

energy and operating pressure according to the specific needs of each customer.

Over thirty years of experience in demolition equipment are said to make Promove one of the most experienced players in the market, always on the lookout to the future of demolition, the development of ideas and the search for new growth opportunities, always to the benefit of the customers.

www.promovedemolition.com

Tabé's iconic model M 375 updated to M 385

Spanish company Tabé Hammers is now releasing its latest model, MT 385, being an upgrade of the MT 375. Designed for machines between 5t and 8t tons, the new model was introduced at bauma 2022 with the first models going into production during 2023. The MT 385 has been designed to offer a better power to weight ratio while maintaining the bolts free design



and mono-bloc cylindrical profile that Tabé pioneered more than 20 years ago. The MT 385's simplicity in its conception makes it an efficient and easy to maintain hammer. Tabé is now continuously working on updating its light range, planning to release additional one or two new models during Smopyc 2023 in Zaragoza in November.

www.tabé-hammers.com

The 'Red Line' breakers from HKM

HKM was founded in 1975 in Istanbul, Turkey, with its Red Line breaker series being engineered to ensure non-stop high demolition efficiency on the jobsite. An anti-blank firing valve and flow secure valves are standard to protect from overflows and idle shots. Directly integrated high pressure hammers are designed to ensure maximum efficiency for demolition work. The Red Line series has a nut free tie rod concept which is designed to minimise tie rod length and improve the service lifetime of the front head. With the Red Line series, high breaking power no longer means more operational cost as the hammers have a central vibration dampener included to absorb vibrations on tie rods and increase service lifetime. Optional accessories are easily adaptable according to the jobsites, such as an underwater operation kit, a high wear resistant reinforced housing, hydraulic controlled auto lubrication station, and a combined and one piece bushing for tunnelling operations. In addition, breaker working time and working frequency have been considered, with the Red Line 'Solid Track' enabling performance and overall operational cost to be monitored.

www.hkm.com.tr





TWO CYLINDER CONCRETE CRUSHER - DCC

The Demarec DCC 2-cylinder concrete crushers have been especially developed for demolishing the thickest reinforced concrete, such as viaducts, quaysides, and heavy foundations. The DCC-line is designed for this application without any compromises. Because of the DemaPower 2.0 cylinder technique the DCC concrete crusher has the performance equivalent to crushers one or two sizes larger.

THE "SECRET" BEHIND THE POWER OF THE DCC; DEMAPOWER 2.0

"as a result of the DemaPower 2.0 System, DCC Concrete Crushers achieve a performance similar to other crushers one or two sizes larger"

IN THE END... IT'S ONLY ABOUT THE RIGHT TOOL

DEMAREC, De Hork 32, 5431 NS Cuijk, the Netherlands. Tel.: +31 (0) 485 442300, info@demarec.com

DEMAREC Deutschland, Im Rohnweiher 14, D-53797 Lohmar, Germany. Tel.: +49 2205 92027 0, info@demarec-deutschland.de

KINSHOFER UK, Shipton downs farm, Hazleton, Cheltenham, GL54 4DX. Tel.: +44 (0)161 406 7046, sales@kinshofer.co.uk

KINSHOFER USA, 6420 Inducon Drive - Suite G, Sanborn, NY, 14132. Tel. +1 (716) 731 4333, sales-usa@kinshofer.com

KINSHOFER Canada, Mainway Drive, Unit #11 - Burlington, ON L7L 7G5. Tel. +1 (905) 335 2856, sales-northamerica@kinshofer.com



SYNTEC™
DIAMOND TOOLS

Leaders in Diamond Tool Technology
BLADES | CORE BITS | SURFACE PREP



HIGH-PERFORMANCE DIAMOND TOOLS



WEBSITE



WHETHER CUTTING, DRILLING OR GRINDING - WE'VE GOT YOU COVERED!
Worldwide Distribution Network | pdisales@syntecdiamond.com | +61 8 8102 0115

DIAMOND

Hire & Sales

ROCK DRILL HIRE

Zero HAVS

Fast Drilling

Increased Production

**DESIGNED FOR
DRILLING,
ENGINEERED TO
LAST!**

Call: 0800 0015105

www.diamondhireandsales.co.uk

info@diamondhiresales.co.uk



Bobcat unveils all electric skid steer loader

Following the 2022 release of the T7X, said by Bobcat to be the world's first all-electric compact track loader, Bobcat has now unveiled what the company says is the world's first all-electric skid steer loader, the S7X.

"At Bobcat, we are always pushing the boundaries to explore the next leading advancements that help our customers accomplish more and propel the industry forward," said Scott Park, Doosan Bobcat CEO and vice chairman. "As an organisation, we are committed to innovating for our customers' needs first and foremost, so that they can become more efficient, more productive and more successful."

About the S7X

Like the T7X, the S7X is all electric, being powered by a 60.5kWh, lithium ion battery, features electric drive motors and utilises ball screw actuators for lift and tilt functions. Together, the battery and electrical powertrain have been designed to deliver high performance characteristics, with instantaneous torque that is said by Bobcat to be as much as three times greater than traditional loaders. The loader is said to balance sustainability and performance with zero emissions and is equipped to outperform its diesel powered equivalent.

The loader has been developed to provide operators with a smooth and comfortable experience with minimal vibration and nearly silent operation. It can operate for up to eight hours on a single charge depending on the application, giving most operators more than a full day's work when breaks and downtime are considered. A full charge takes approximately 10h. "As the inventor of the original skid steer loader, we are excited to take the machine that created the industry and reinvent it all over again," said Joel Honeyman, Doosan Bobcat vice president of Global Innovation. "The S7X is an incredible product with real world application that can support operators on environmentally sensitive sites, in noise restricted areas and for indoor operation." At this time, the S7X skid steer loader is being debuted as a prototype machine.

RogueX: concept machine that breaks all the rules

The RogueX has been developed to combine technologically advanced features to make it a 'one of a kind' conceptual machine. While most closely resembling a track loader, the machine is said by Bobcat to be in a league of its own. As a research and development project, the machine was built as a

proving ground to advance the Bobcat innovation roadmap, evaluate customer perceptions and test the limits of machine functionality. "RogueX was conceived with consideration for the worksite of the future and how a customer's needs may evolve, with a focus on ease of use, remote operations, autonomous functionality, sustainable operations and features that allow operators to accomplish more with one machine," said Honeyman.

As jobsites change and operators turn to remote operation, Bobcat stated that it took its concept further by fully eliminating an operator station. The machine explores the idea of operating where humans cannot go to tackle more work in more places than ever from a remote position. By building the loader without a cab and using advanced kinematics, RogueX features next generation functionality including both vertical path and radial path lift capabilities in one machine. The all-electric and autonomous concept machine is said to produce zero emissions as it features a lithium ion battery, electric drive system and no hydraulics.

"After our successful development of building an all-electric loader (the Bobcat T7X), we wanted to think bigger, broader and take a leap far into the future," said Matt Sagaser, director of Innovation Accelerated at Bobcat. "Our dedicated innovation team took a bold approach and designed a machine that breaks all of the rules. RogueX sets a framework for what is possible, and our team is just getting started on what is next." RogueX is currently in the early research and development stage.



RONDA® VACUUMS FOR LIFE



Heavy duty vacuum cleaners with filter technology second to none



DUST EXTRACTORS H-CLASS

RONDA® 200H Power



DUST EXTRACTORS H-CLASS

RONDA® 1800H Power



VACUUM CLEANERS H-CLASS

RONDA® 2800H



WATER SLUDGE RECYCLING

RONDA® 350

A large step towards a healthy work environment

V. BRØNDUM A/S

See the full range of RONDA® vacuum cleaners on www.brondum.com



SaMoTer

is back again

SaMoTer

INTERNATIONAL CONSTRUCTION EQUIPMENT TRADE FAIR

3-7 MAY, 2023
VERONA, Italy

This year's edition of SaMoTer in May will feature a line-up of manufacturers.

In the beginning of May, the Italian tradeshow SaMoTer will take place at the Verona Exhibition & Convention Centre. SaMoTer will focus on construction machinery of the future, including new technologies, efficiency, safety and sustainability. PDi will of course be on site to cover the eagerly anticipated show which was postponed due to Covid-19.

Strong line up of manufacturers

There are quite a number of manufacturers of machinery and equipment for demolition, recycling and remediation exhibiting at the show. In this article you will find a list of the majority of these exhibitors at the show. Although SaMoTer is an international tradeshow with a number of major manufacturers exhibiting, the vast majority of the exhibitors are Italian.

Focus on a green deal

SaMoTer will be held 3 to 7 May 2023 with the aim of capitalising on the recovery in the industry. The 31st edition will highlight the key role that the construction equipment industry is destined to play as regards

environmental sustainability and the development of the economic models outlined by the New Green Deal. This is a vital turning point to promote the innovations introduced to reduce emissions and promote recycling of the materials used on construction sites.

Large exhibition area and comprehensive conference programme

Six halls will be available to exhibitors at SaMoTer, plus

three outdoor areas. The format of the latest edition will be further strengthened through an increasingly interactive and dynamic approach focusing on demo areas where visitors can see and try many of the machines on display. There will, as well as ever, be more 'tailor made' attendance days with events, promotions, set-ups and the conference programme. As regards incoming international buyers, a series of initiatives is being developed to support the internationalisation processes of SMEs,





with an emphasis on B2B presentations and business meetings during the trade fair.

In the meantime, the run up to the 2023 show began early with the road map envisaging two SaMoTer Day appointments: the traditional networking day in Verona in January and at the end of March, a meeting in Rome to take stock of the national and international construction equipment market. The latter analysed 2021-2022 data and initial estimates for 2023, together with institutions, Unacea and CER- Centro Europa Ricerche. This is an additional market intelligence tool that SaMoTer makes available to companies keen to invest with a view to the availability of additional NRP resources.

2023 will also welcome B2Press appointments bringing together selected companies and the trade press, the Technical Innovation Competition rewarding research and innovation investments by companies, and a major International Summit dedicated to all exponents and decision makers in the construction industry.



SELECTED EXHIBITORS SAMOTER 2023

EXHIBITOR

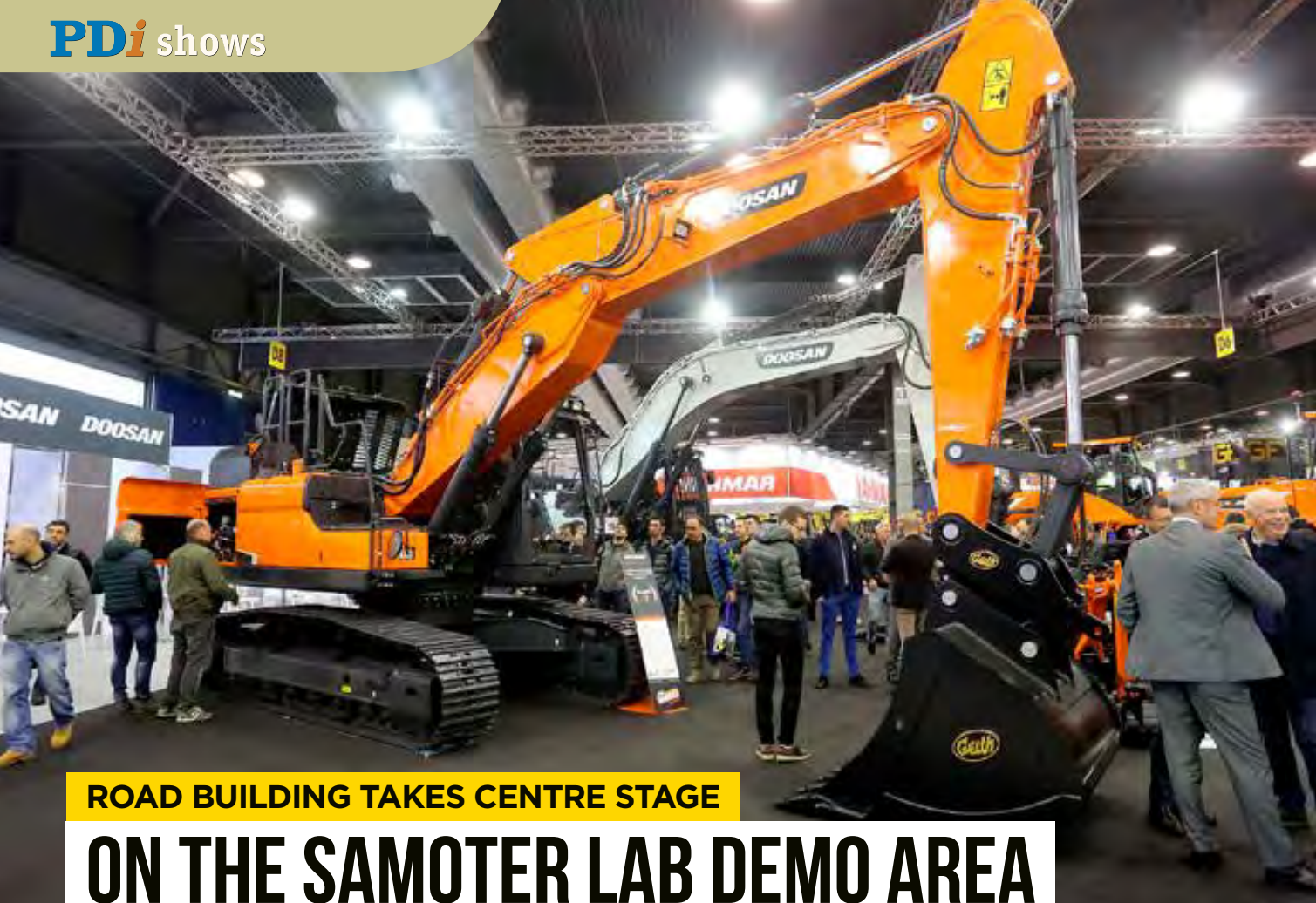
- CAMS SRL, Italy
- CANGINI BENNE SRL, Italy
- CICLONE SRL, Italy
- DIECI SRL, Italy
- DOOSAN BOBCAT EMEA S.R.O., Czech Republic
- DOOSAN INFRACORE EUROPE, s.r.o., Czech Republic
- EDILMAG SRL, Italy
- EPIROC ITALIA SRL, Italy
- EUROMECC SRL, Italy
- GASPARIN OMG SRL, Italy
- HIDROMEK, Turkey
- HITACHI CONSTRUCTION MACHINERY EUROPE, The Netherlands
- IDROMECCANICA RAMTEC SRL, Italy
- INDECO IND S.P.A., Italy
- IPAF LTD - INTERNATIONAL POWERED ACCESS FEDERATION, United Kingdom

EXHIBITOR

- ITALIADEMOLITORI SRL, Italy
- KEMROC SPEZIALMASCHINEN GMBH, Germany
- KOBELCO CONSTRUCTION MACHINERY EUROPE BV, The Netherlands
- KOMATSU RETE ITALIA, Italy
- MANTOVANIBENNE S.R.L., Italy
- MB CRUSHER, Italy
- MESSERSI S.P.A., Italy
- MULTIONE SRL, Italy
- OSA DEMOLITON EQUIPMENT SRL, Italy
- PROMOVE S.R.L., Italy
- RAMMIT SPA, Italy
- RM S.R.L., Italy
- RMC SRL, Italy
- ROTAIR S.P.A., Italy
- SAMEP TOOLS SAS, Italy
- SANY GERMANY GMBH, Germany
- SEA TECHNOLOGY SRL, Italy

EXHIBITOR

- SEBA CRUSHERS SRL, Italy
- SIMEX S.R.L., Italy
- SOCOMECC S.P.A., Italy
- SUNWARD EUROPE HEAVY INDUSTRY NV, Belgium
- TREVIBENNE SPA, Italy
- VISTARINI SRL, Italy
- VTN EUROPE SPA, Italy
- WACKER NEUSON SE, Germany
- WIRTGEN MACCHINE S.R.L., Italy
- XCMG EUROPEAN SALES AND SERVICES GMBH, Germany
- YANMAR CONSTRUCTION EQUIPMENT EUROPE, France
- ZOOMLION CIFA EUROPE S.R.L., Italy



ROAD BUILDING TAKES CENTRE STAGE

ON THE SAMOTER LAB DEMO AREA

The 31st edition of SaMoTer will be held at the Veronafiere from 3-7 May 2023. At the Lab demo area equipment will be at work from CGT Caterpillar, Develon, Dynapac-Fayat Group, Incofin, Komatsu, Leica Geosystems, Spring Machine Control, Topcon Positioning, Sitech-Spektra - a Trimble Company, and Way.

SaMoTer will boast a new and revolutionary high tech area: Cantiere Digitale, The Digital Construction Site. This will be a full scale automated construction site set up in the SaMoTer Lab demo area in collaboration with Quelli del Movimento Terra. “SaMoTer Lab came about thanks to constant and continuous debate with the sector, which expressed the need for a venue specifically for technological displays, combined with updating, discussion and training opportunities. SaMoTer Lab consequently focuses on technological innovation, digitalisation, decarbonisation, safety and training. Cantiere Digitale - The Digital Construction Site - is the natural outcome of all this, as a full scale work place for cutting edge machinery and technologies,” explained Raul Barbieri, sales director of Veronafiere.

“The Digital Construction Site will host typical construction site processes several times a day to highlight advantages in terms of productivity, quality and safety thanks to the use of these technologies,” added

Sara Quotti Tubi, SaMoTer event manager. Visitors attending SaMoTer will have the chance to watch 4.0 machinery and digital control technologies at work in construction of road infrastructure. These will be spread



across three stages: surveying with drones, GPS, scanners, mobile mapping and robotics; design, with the creation of a 3D project to ensure a flat and regular new road surface and start renovation work; and machine to machine interaction, which is the stage when the project is uploaded to the processing machinery used.

CGT Caterpillar, Develon, Dynapac-Fayat Group, Incofin, Komatsu, Leica Geosystems, Spring Machine Control, Topcon Positioning, Sitech-Spektra - a Trimble Company, and Way, have joined the Digital Construction Site concept. “While the construction machinery sector is currently coping with rapid technological evolution, SaMoTer is back on the scene. SaMoTer Lab and the Digital Construction Site are a major response valorising the extent of these necessary changes,” said Sara Quotti Tubi.

SaMoTer is held alongside Asphaltica, the exhibition for road paving, safety and road infrastructure technologies and solutions promoted by and with Siteb-Strade Italiane & Bitumi.

BE A WASTE TRANSFORMER

RECYCLINGAKTIV

BOOTH F444 &
DEMO AREA WOOD
AND BIOMASS
27 - 29 APRIL 2023
MESSE KARLSRUHE
GERMANY

Martin Brinck Schmidt
Managing Director
Kockmann GmbH
Germany

#WASTETRANSFORMER

ONLY LINDNER CLIENTS CAN TRULY SAY:

FROM MINIMISING MATERIALS TO MAXIMISING YOUR POSSIBILITIES

WITH THE FULL POWER OF LINDNER'S **MOBILE-SOLUTIONS.**

LINDNER

ANTRAQUIP[®] CORP

Experienced, Innovative & Reliable

HIGH PERFORMANCE, DELIVERED

ROCK CUTTING

CONCRETE REMOVAL

FOR MORE INFORMATION CONTACT US +1 (301) 665-1165 • www.antraquip.net • info@antraquip.net

THE ULTIMATE DEMOLITION ATTACHMENT

CONTROLLED DEMOLITION • REINFORCED CONCRETE CUTTING • MAKING THE AQ DEMOLITION SERIES THE ULTIMATE ATTACHMENT



Doosan to introduce 'Develon' brand at SaMoTer

At SaMoTer 2023, Doosan Infracore will show its new Develon brand for the first time in Italy. Unveiled in January this year, the brand was officially launched in March at ConExpo-Con/Agg 2023, where the first Develon branded machines were shown.

Doosan is changing its name but not its identity. Rather, it aims to strengthen its positioning as a leading company in the development of cutting edge technological and construction site solutions that look and develop beyond what is currently available. These being the key concepts embodied in the name Develon itself, namely 'Develop' and 'Onwards'.

In recent years, Doosan has developed construction site technology driven by an award winning R&D team, working under the motto 'Powered by Innovation'. Many new technologies have been developed to expand the company's 'Smart Solutions' portfolio for construction equipment. Flagship innovations include 'Concept-X', a winner at the 2020 SaMoTer Innovation Awards, the world's first integrated control solution for the entire construction process.

Innovative solutions at SaMoTer 2023

As in 2020, Doosan has again been recognised as a pioneer in innovation, by winning another important award at the 2023 SaMoTer Innovation Awards. The latest award has been won for Doosan's new electric 14W EREV wheeled excavator, said by Doosan to be the most advanced vehicle of its kind.

Designed with a regenerative transmission system ('eDrive'), an advanced swing system ('eSwing') and 'eWorking' systems, it aims to provide maximised efficiency with zero emissions.

Built with an aerodynamic design, the 14W EREV maximises peripheral vision even at long distances for optimal safety and protection. By offering 360° coverage of the driver's field of vision, the operator can easily detect obstacles from any angle and in any urban environment. With its centre of gravity located in the undercarriage, the vehicle has been designed to provide excellent stability, both while working and driving. In addition to providing stability and power, the 14W EREV is also said to offer high levels of build quality that provides peace of mind when undertaking any project.

New DX20ZE electric mini excavator

SaMoTer provides the opportunity to showcase the new Doosan DX20ZE 2t electric mini excavator for the first time in Italy. This machine combines its safe, quiet and zero emission design with the successful characteristics and high performance of the equivalent diesel mini excavator for working in confined spaces. With a width of just 950mm, the new DX20ZE can pass through narrow passages and entrances/exits, making it ideal for working in confined space indoor applications such as demolition and basement construction. In addition to indoor projects, the vehicle is ideal for operating in urban centres, in low noise areas and for night work.

The DX20ZE is driven by an in house developed 20kWh lithium ion battery pack, with all of the electrical system and components on the machine optimised for work in harsh environments. A quick charger system

restores 80% of the battery power after only one hour of charging, whilst the on board charger restores the maximum charge after six hours of charging.

Revolutionary transparent bucket

Among other new products from Doosan that are designed to offer added value to customers through innovation, the 'Transparent Bucket' system is said to be among the best known and has achieved success and attention at every show where it has been presented. Doosan states that this is the world's first safety system (patented) that allows the wheel loader operator to view the blind spots in front of the bucket thanks to front top and bottom mounted cameras that record and combine the images in real time on the monitor in the cab, using a curved projection method. The system, besides ensuring greater safety for the operator and other workers on site, is said to improve operational efficiency as it offers a forward perspective view during loading/unloading operations or during the transport of materials such as aggregates, sand and earth. Doosan/Develon is working on developing the system even further with new artificial intelligence algorithms for people and object recognition.

DL420CVT-7 wheel loader

At the 2023 edition of SaMoTer, Doosan will be showing the DL420CVT-7 wheel loader, a wheel loader with hybrid transmission, i.e. hydrostatic and mechanical at the same time. It has a continuously variable transmission ('CVT') which manages to deliver continuous power to the wheels independently from the engine in a variable manner. It has been designed to switch easily from hydrostatic transmission to mechanical transmission as speeds increase and according to the traction needs, without ever impacting the engine, which will be able to work at a lower and more constant number of revolutions.

Thanks to this technology, the DL420CVT-7 is said to provide torque to the wheels that is always available even at low revs, with maximum acceleration (no rev reduction impacts on productivity) and allows faster 'V' cycles with what is said to be a reduction in fuel consumption of up to 22%. The advantage derived is not only a lower environmental impact, but also lower noise and reduced consumption along with greater productivity and is said to also provide greater comfort for the operator.

Representing new compact loaders

Another prominent product will be the new DL85-7 wheel loader representing the recently launched range of five models (DL60-7, DL65-7, DL80-7, DL85-7 and DL80TL-7). These compact machines have been designed to set a new industry standard in their class for productivity, flexibility, comfort, safety and reliability. They come complete with a comprehensive package of modern technologies, including a powerful Stage V engine, hydrostatic all-wheel drive transmission, 100% differential lock on both axles, and powerful and versatile hydraulic systems.

Pentrunder[®]

RS2

Revolutionary one-of-a-kind integrated motors

Integrated 18 kW drive motor

Efficient slip clutches for all motors

Two integrated brushless feed motors; one for the saw arm rotation and one for travelling along the track

Both feed motors can be used at the same time

Designed with the customer in mind

The Pentrunder RS2 saw head weighs less than 25 kg

IP65

Blade rotation in both directions

Light weight, easy to fit blade guard

Best protection and handling

One connector and cable only

Only standard hand tools needed for maintenance

Shorter setup times

Quick disconnect coupling for blade

Easy fitting of blade

Pentpak 3

IP64

Light weight, compact and durable

Same track system as all other Pentrunder machines

Highest stability and best handling

Easy assembly of saw on track

Same track feet mounting distance as for the HF- saws

Pentrunder[®]
CONCRETE CUTTING SYSTEMS

Pentrunder - designed and manufactured by:
Tractive AB | Gjutargatan 54 | 781 70 Borlänge | Sweden
www.pentrunder.com | contact@pentrunder.com



THE UNSTOPPABLE RISE OF THE COMPACT TRACKED LOADER

The compact track loader has come from nowhere to outsell any other compact product in the US due versatility and speed with Yanmar equipment being no exception.

According to Yanmar, the compact track loader (‘CTL’) has leapfrogged skid steer loader (sales of which are 50% down on a decade ago), which has long been popular in the US. The upward trajectory of CTL sales in recent years has been near vertical. “I think it’s particularly popular in the US because it can cover ground and move material so fast; this is a big country with big sites,” says Buck Storlie, Yanmar Compact Equipment (CE) product manager for North America. “The tracks give the edge over skid steers’ wheels, in that they can work more days a year, even in very damp conditions, thanks to the tracks’ much lower ground pressure. With their much greater traction, they are also more stable and have a higher ability to push into a pile.”

Storlie should know, as he has been working at Yanmar CE’s US factory for 27 years, most of that working with compact track loaders. So, who better to help bring Yanmar’s first all new range of CTLs to market – a range debuted successfully at the recent ConExpo-Con/Agg.

Due to the show being held for the first since the ill-fated event in 2020 was overwhelmed by Covid-19, there was a lot of pent up excitement about this year’s show, and not just from visitors, but dealers and manufacturers too. “We were expecting a big turnout and weren’t disappointed. The market is at the top of a wave, stimulus money is starting to flow into projects and optimism that this situation might stick around for a while is high.”

The company states that Yanmar CE has transformed itself in the almost decade since the company was last in Vegas, so that today it’s almost unrecognisable, and the changes and improvements go much deeper than the new glossy premium red colour scheme. With ambitions to be a full liner in the compact equipment sphere, Yanmar is filling product gaps in its mini excavator and compact wheel loader line ups. However, the new product that Yanmar is really excited about is the launch of an all-new four model compact track loader range, the company’s first in its current line-up.

Designed with the US in mind

Given the size of the market to aim at, Yanmar is optimistic at the prospect of better fulfilling the North American compact equipment market needs. The new range is a ground-up design, developed after extensive research on customer needs and competitor analysis in close cooperation with Yanmar’s in-house skid steer and CTL experts. The result is a high performing, durable range that is keenly priced; the latter helped by being built in the US, saving on intercontinental shipping costs.

The four model line-up comes with open ROPS and all weather cabs, with cab configured models expected to dominate sales. “Owners want to jump out of their comfortable pickups and into an equally comfortable fully loaded cab in their loader,” says Storlie. The launch of Yanmar’s CTL range is arguably the most important product launch for the company in the US since it introduced the zero tail swing excavator. The four machines range covers a variety of sizes with engines to match. Yanmar believes that together the four machines cover almost all (93%) of the CTL market in North America.

Complete line-up

“This is huge for us; it gets us into the largest compact construction machine segment in the US. But we start in a pretty good position,” believes Storlie. “The buyers of CTLs are often the same as those that buy mini excavators. So, whereas in the past customers might say: ‘Okay, Yanmar fulfils 50% of my needs’, now we can be seen as full liners and supply them with all their compact requirements.” Just like the timing of the last ConExpo-Con/Agg couldn’t have been worse, Yanmar came to this year’s show right on time and full of confidence, with a new brand, what it believes is a great product line up and a strong dealer network. The company further believes that when it comes to Yanmar, red now means go, not stop.

www.yanmar.com



FLOOR PREPARATION SPECIALIST MAKES ITS DEBUT

To provide contractors with the best tools for effective concrete preparation, surface preparation company National Flooring Equipment exhibited at ConExpo-Con/Agg in Las Vegas. At its booth D2926, visitors had the opportunity to test drive a range of National Flooring Equipment’s heavyweight floor scrapers, including the newest and most powerful machines, the ‘Viking’ and ‘Rogue’.

Powered by a turbo diesel Kubota engine, the Viking is a 2,586kg ride in scraper designed for heavy duty outdoor work on roadways, bridge decks, airport runways and more. Windshield wipers, headlights and a light curtain enable contractors to work safely in different weather conditions or during overnight roadworks. The cab also includes a range of features designed to

improve operator comfort and safety, including cab air filtration and noise cancelling properties, as well as a cup holder, USB charger and spring loaded seat. National Flooring Equipment’s booth also featured a range of its most popular ride on scrapers designed for large scale, outdoor applications. For smaller projects, National Flooring Equipment also exhibited its latest walk behind scraper, the Rogue, which is a fully electric, modular machine that features an adjustable blade and precision steering for enhanced manoeuvrability.

“The biggest names in construction head to ConExpo to demonstrate how contractors benefit from their equipment, and we’re excited to do the same,” explained Connie Hardy, vice president of marketing at National Flooring Equipment. “We often find that contractors

aren’t fully aware of the importance of proper surface preparation, so by attending ConExpo we plan to raise awareness and equip contractors with the tools needed to remove floor coverings and prepare concrete. We also hope to get feedback from contractors trying equipment on the booth, because it helps us ensure our products remain at the cutting edge of surface preparation technology. Choosing the correct machine for the job is one thing, but knowing how to use it correctly and maintain it is equally important. The specialist training we can give from our stand will help operators get the most out of our equipment, improve efficiency on site and extend machinery lifespan.”



COLD PLANER WITH RADIO-CONTROLLED MULTISKID RC

- » 360° visibility for the operator
- » Fewer resources on the worksite
- » Zero vibrations for the operator who radio controls the machine



SCAN FOR MORE
INFORMATION



www.cmcrushermachines.com - T. +39 (0) 445 576654
info@cmcrushermachines.com

SaMoTer

3-7 MAY, 2023
VERONA, Italy

DDMBRANDING.COM

MOVE IT

MOVE YOUR BUSINESS WITH SAMOTER

INTERNATIONAL CONSTRUCTION EQUIPMENT TRADE FAIR
REGISTER NOW!

SAMOTER.COM

EXHIBITION PARTNER



CO-LOCATED WITH

asphaltica

VERONAFIERE.IT



Organized by
veronafiere
Trade shows & events since 1898



EPIROC ER 3000 DRUM CUTTER CLEARS THE

(flow) path into the future

In order to keep the Rhine navigable for freight transport despite low water levels, the shipping channels must be regularly adjusted, with the Epiroc ER 3000 drum cutter proving to be the ideal tool for the job.

Climate change and the particularly long periods of high temperatures last summer had a severe impact on the Rhine, meaning that supplies to companies along the river could only take place under difficult conditions and with restrictions. Shipping and the associated transport of goods have suffered enormously. For one of the most frequented goods transport routes, it is therefore particularly important to keep the channel navigable, to improve it, to prevent water levels falling and to secure the infrastructure for the future.

The task

Milling work must be carried out in the Middle Rhine area, between Östrich and Geisenrücken, in order to guarantee a target depth of 2.10m below GIW (equivalent water level). For this profiling of the channel, obstacles (such as crags) are removed underwater at specific points. The scaly, cracked material with a hardness of up to 100MPa requires suitable drum cutter sizes and carriers. The project – funded by the Federal Ministry of Digital Affairs and Transport – proved to be challenging for all parties involved because the use of hydraulic breakers or blasting is not permitted due to harmful vibrations and uncontrolled sediment formation. Special conditions for working underwater also apply, not least nature conservation requirements.

First class and sustainable

The Wesel based company Hülskens Wasserbau GmbH & Co. KG, used two floating pontoons for the project,

on which the required technology is permanently installed. A Demag-H95 special excavator mounted on the front pontoon serves as the carrier. The usual tests for armaments were carried out beforehand, with none being found, although large amounts of scrap were uncovered, with conditions onsite enabling work to proceed.

The necessary work in sensitive conditions proved to be the ideal task for Epiroc's ER 3000 drum cutter equipped with special additional features. It not only has special wear protection for extreme underwater use, but also an additional suction hood installed in the first construction phase which encloses the drum cutter over a large area. With this tried and tested technique, the excavation material produced during the milling work is extracted and transported to the rear pontoon in a

controlled manner. A technically sophisticated filter and separation system, as well as a loading container for the excavation material, were also used. As the underwater work requires environmentally safe operation, it proved fortuitous that the Epiroc drum cutter is not only powered by bio hydraulic oil, but that a special bio oil is also used as the gearbox lubricant. During operation, the ER 3000 is supplied with an oil quantity of 420l/min.

All in all, the work has so far been carried out without any difficulties or damage. The low wear on the cutting tools once again underlines the high quality of the ER 3000 (Epiroc states that this has been to the delight of everyone involved). Erkat's milling technology, which has been part of the Epiroc Group since 2017, was said by the company to demonstrate the ideal combination of material, procedure and know how.





LET'S BEAT THE DRUM

for drum cutters!

Drum cutters are now part and parcel of the product portfolios of excavator attachment manufacturers all over the world. PDi's Andrei Bushmarin presents the latest news from the drum cutter industry.

Kemroc KR 165 turns a WW II bunker into residential building

Specialist contractor Wilko Wagner GmbH has contributed to the reuse of historic buildings in Hamburg by executing an ambitious demolition project. In the upmarket district of Winterhude, an old World War II bunker was partially demolished, with the remaining structures being converted into a residential building. Hamburg has recently become a trendsetter in giving historical buildings a second life. There are still about 400 bunkers left in Hamburg, of which several dozen are high rise ones. For these buildings in particular, the preferred option is not to demolish them completely, but to dismantle sections with no value and to convert the rest into residential areas. One such bunker is located in the well-known district of Winterhude. The contract to demolish part of that bunker was awarded to Hamburg based Wilko Wagner GmbH.

In accordance with the regulations for the conversion of high rise bunkers, the street facade, the freestanding gable wall and the sidewalls directly facing neighbouring buildings must remain in place, whilst the back wall facing the courtyard was to be demolished. The inside of the bunker, originally consisting of six floors each with a ceiling height of some 2m, was to be completely dismantled from top to bottom. A shaft was first created by making a hole by hand through each of the 25cm thick floors and using a wire saw to cut an opening through a wall on the ground floor, through which around 7,000m³ of demolished concrete material could later be transported away by a compact loader. At a later stage, the interior of the building will be completely rebuilt. To create additional living space, the plan includes penthouse apartments to be built high up on

the roof of the new residential building. In preparation for this, the existing reinforced concrete roof, around 220cm thick and weighing 400t, had to be removed.

In May 2022, preparation work started with the installation of noise protection panels and ceiling supports. Demolition began in July attracting extensive public and media attention when a 35t excavator was placed on the concrete roof. After removing the top bitumen layer, the excavator operator then cut a so-called foxhole through the concrete roof above the shaft using a Kemroc KR 165 drum cutter. Material created during subsequent demolition work was discharged through this hole. For residents and passers-by, a particularly spectacular part of demolition work was watching the window openings being cut through the 110cm thick, heavily reinforced facade walls of the bunker. Norbert Klatz, technical director for the Wilko Wagner Group, describes the three step process: "First, we marked out the area and drilled four holes in the bunker walls corresponding to the corners of the floor to ceiling window openings. Then, using our excavator and the Kemroc drum cutter, the bunker wall between these corners was ground down leaving a thin section of wall. The third step involved the removal of the remaining thin section of wall using an excavator with a shear."

Wilko Wagner also used a water spray dust suppression system on the job site. According to Norbert Klatz, the system made it possible to keep dust levels within required limits. Even more important, however, was the fact that the vibration and noise levels were also within range during operation of the drum cutter. "Our demolition method worked very well technically," he commented in mid-January, a few weeks before completion of the work. "There were only a few complaints

from residents regarding the environmental impact of our demolition work. The monitoring report by the Environment and Occupational Safety Authority also gave us favourable results."

www.kemroc.de

Epiroc VC 2000 does a fine job of removing rock in German mountains

A VC 2000 drum cutter from Epiroc was used for rock removal in a rainwater retention basin at the summit of the A45 motorway in the mountainous Siegen, Germany. The building authorities specified that the slope should be secured with a retaining wall. There was rock material on the surface that had to be removed with a high degree of precision to ensure that the wall, built from concrete piles, would not be damaged. The VC 2000 attachment that had been previously tried on





SCAN THE QR CODE
TO VISIT OUR WEBSITE

COME VISIT US

SaMoTer

SAMOTER
VERONA, ITALY
3-7 MAY, 2023
HALL 10, STAND L3-M3



PLANTWORX
NORTHALLERTON, UK
13-15 JUNE, 2023
STAND D-JE1

ENDURANCE
POWER
IMPROVEMENT
DEDICATION

IT'S SIMEX

HYDRAULIC ATTACHMENTS
FOR EARTHMOVING MACHINES



SIMEX
HEAVY MADE EASY

Soc. Uninom. Via Isaac Newton, 31-33 - 40017 San Giovanni in Persiceto (Bo) - IT

Tel. +39 051 681 0609 - sales@simex.it - simex.it



various 20t-40t excavators passed the test with flying colours. It ensured that rock removal was quick and effortless and allowed construction work to be completed successfully within two weeks.

With its trademark V-shape, the VC 2000 has been designed to combine simplicity with high performance. Thanks to this innovative design, it creates flat surfaces without the material getting accumulated between the drums. The attachment can also be used underwater at a depth of up to 30m. In addition to its robust housing for increased operating time, it also has a durable drive shaft bearing with a maintenance free mechanical seal system, and also features an adaptable gear motor with high torque for greater productivity and longer motor service life.

www.epiroc.com

Simex TF 2100 drum cutter processes schist at a Ligurian landfill

Based in Vado Ligure, Italy, Ecosavona Srl. operates in the sectors of treatment of non-hazardous urban and industrial waste and energy recovery from renewable sources. The company has recently purchased a TF 2100 double drum cutter from Comai Spa, a Simex dealer headquartered in the town of Bra, Piedmont. An important player in the northwest Italy for the sale and rental of earthmoving and road building equipment, Comai also has a branch in Liguria. The drum cutter, mounted on a Hitachi ZX350LCN-6, was used at the Bossarino landfill, in the municipality of Vado Ligure, for wall profiling and earthworks. The plant is mainly intended for the disposal of non-hazardous waste, the recovery and recycling of various materials and the production of electricity from organic residues. The rock wall profiling was necessary for the subsequent installation of waterproof geomembranes, which are made of high density polyethylene panels with high resistance to mechanical stress. Among the most frequent uses of these panels is in 'landfill capping', providing permanent or temporary covers, which prevents the infiltration of rainwater into the ground and the stagnation of the leachate. For this reason, the Italian company needed a tool that would not only crush rocks, but would have high degree of precision to ensure correct installation of the geomembranes.

Simex's 'TF' range has been developed to combine high hydraulic power with the selective breaking of the rock mass, ensuring the stability of the wall and producing material ready for immediate reuse. The frame's special shape allows the reduction of the distance between the drums, increasing the total working area. In addition, the mechanical gaskets fitted on the drums enhance resistance to dust and other external



agents. Weighing in at 2,380kg, the TF 2100 boasts a rated power of 120kW and a cutting force of to 71kN. Vado Ligure is a geologically complex area encompassing several lithology's, including various types of schist. Specifically, the TF 2100 double drum cutter processed schist with reduced resistance to excavation due to high degree of fracturing. The drum cutter's production rate varied between 25 m³/h and 30m³/h.

www.simex.it



Antraquip attachments help rehabilitate a lock in New York State

Antraquip, a US based manufacturer of mechanised rock and concrete cutting equipment, has recently supplied three AQ-5 drum cutters to one of its most longstanding customers in northern New York State. Although this contractor has performed many demolition jobs using Antraquip cutters over the years, this project was a unique challenge. For the project, the contractor was on a particularly tight timeline to complete the controlled demolition of a wall within a lock which would need to reopen by spring to allow large ships to pass through the vital waterway to access the major cities in the Northeastern part of the US and Canada. The customer mounted the AQ-5s on Cat 349 excavators that were positioned on barges from where they would grind the concrete down to a depth of up to 1m. This concrete was not your normal weathered concrete commonly seen on lock and dam rehab jobs, but instead had a hardness of 55MPa with steel support imbedded within the concrete. As the machines worked their way down, the water level was dropped in order to access the deeper areas of the lock. The project required operation of the three machines around the clock despite brutal weather conditions with temperatures dropping to as low as -34°. Nevertheless, the entire project was completed well ahead of schedule in less than one month.

The use of Antraquip drum cutters was the ideal option for a project like this as the AQ-5s provided the perfect combination of high productivity and precision while eliminating the possibility of over breaking or microfracturing that could damage the integrity of the lock walls.

www.antraquip.net

Two new models from Cat

New Cat RC20 and RC30 drum cutters are available with pin on, 'S-type', Cat pin grabber or 'CW' couplers. Rotary drum cutters are compatible with Cat hydro mechanical work tool brackets, which allow operators to move more smoothly from one task to the next. For space limited jobs, the drum cutter can be manually turned either 90° or 270°.



Adding an optional hydraulic lines kit, the rotary cutter can be turned up to 180° for cleaning narrow trenches. Ideal for dredging applications, the rotary cutter can be submerged in water without any modifications to the tool. The direct drive motor offers high torque and production rates. With less space between the drums, the machine has been designed so that operators can build narrower trenches while also burning less fuel. Its picks are easily replaced with a simple tool. Mechanical seals help to lock in grease and keep dust out to operate longer between maintenance.

www.cat.com

Rock.Zone features 'Rockwheels'

Rock.Zone GmbH, a Germany based trendsetter in excavator attachments, has an ample portfolio of drum cutters called Rockwheels to fit carriers ranging in operating weight from 0.7t to 125t. A special relief valve ensures motor protection: the drain oil goes directly to the return line, and if there is too much pressure in the drain oil section, the operator can see it on the valve. One of the drum cutters' trademark features is a very small gap between the drums so a Rockwheel can be used for creating narrow trenches. For cutting extremely narrow trenches, Rock.Zone offers a specially developed Rockwheel trench cutter.

www.rock.zone



Doosan Construction Equipment is now

DEVELON



Same quality products > maximum productivity
> outstanding value > continuous innovation

Find out more: eu.develon-ce.com

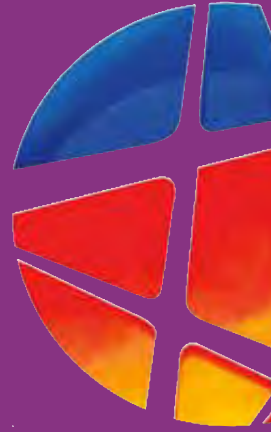
Powered by Innovation

Convention & Exhibition

White Petals, Palace Gro



indian demolition association



India's 2nd Dedicated Conference and Exhibition for Demolition, Concrete Cutting

Affiliate Sponsors:



Three
More
Available
Positions

Platinum Sponsors:
Ten Available Positions

Gold Sponsors:



Seven
More
Available
Positions



Watch out for Registration and Exhibition alerts soon. For Sponsor Opportunities

, 28-29 September, 2023

unds • Bengaluru, India



DEM TECH

2
0
2
3

An IDA - Indian Demolition Association Event



ng, Recycling & Remediation Techniques

er Sponsors:



Four
More
Available
Positions

Organisers:



HEADLINE
SPONSOR

One Available
Position

es. Contact IDA for more information

www.indiandemolition.org • www.demtech.in



CM introduces radio controlled cold planer

CM is an Italian company that designs, manufactures and markets equipment for earthmoving machinery including cold planers for skid steer loaders and excavators from 1t to 30t. The cold planers for skid steer loaders are produced in eight models with working widths from 250mm to 1,000mm, and maximum digging depths up to 200mm. The side shift is hydraulic as standard, and depth adjustment is independent on both sides, while depth adjustment and inclination in the hydraulic version are options.

The CM excavator cold planers are manufactured in five models with milling widths from 200mm to 600mm and maximum milling depths up to 200mm. They have a robust design, and can work for horizontal, vertical, and oblique milling. They are ideal for scraping rock, and removing damaged surfaces in tunnels and motorway pylons.

CM 'Multiskid RC'

In 2022, CM designed the new Multiskid RC, a fully radio controlled skid steer loader, designed, among other things, for the road sector. With a classic skid steer loader, the operator has little visibility from the cab, and

in many cases, needs a second operator to guide the milling operation, such as when dealing with man hole covers etc. With the Multiskid RC, this problem does not exist. By radio controlling the machine, the operator can work in front or at the side of the machine while having full 360° visibility.

Using the Multiskid RC, a single operator can complete a job that would otherwise require at least two people. In addition to the advantage of direct visibility and the use of fewer resources on the job site, the operator is safe from the vibrations of the operating machine. The Multiskid RC has been designed with a 'high-power' hydraulic system, 252 l/min at 300 bar, to accommodate most equipment, even those that require a high hydraulic demand, such as wheel saws and forestry mulchers. It is also equipped with a universal skid steer loader attachment plate, so that it is versatile and interchangeable with any equipment.

The Multiskid RC has been developed with a trapezoidal undercarriage, a low centre of gravity, and a compact design to provide strong ground traction resulting in stability and safety.

www.cmcrushermachines.com



engcon exhibits at ConExpo- Con/Agg 2023

ConExpo- Con/Agg provided the focus for engcon to showcase the tiltrotator and its benefits. At engcon's booth, there were three different excavators demonstrating the advantages of equipping an excavator with a tiltrotator.

The Swedish tiltrotator manufacturer engcon supplies tiltrotators, tools and accessories for excavators all over the world. The range, which is well established in the Nordics, has in recent years expanded to large parts of Europe and North America. engcon established its operations in the USA in 2017 and exhibiting at ConExpo-Con/Agg is another step in engcon's ambition to develop further the North American market.

"We know how important it is to see our products in action because many people can hardly believe that the tiltrotator is really as efficient as it actually is. That's why we put a lot of focus on running demonstrations at our ConExpo-Con/Agg booth," says Martin Engström, product manager at engcon. "With our tiltrotator, efficiency and safety increase. A tiltrotator together with our accessories replaces other machines and contributes to the job being done more efficiently. With our solutions, the driver can safely remain in the cab and change accessories and buckets. In this way, the tiltrotator is an excellent investment for those who want to catch up on more assignments in a shorter time."

engcon presents 'EC-Oil'

EC-Oil is engcon's system for the automatic coupling of hydraulic tools. "With EC-Oil, you can safely change accessories in seconds, and you avoid hoses or electrical cables that move when connecting, which reduces the risk of crushing damage and wear and tear," says Martin Engström. As well as demonstrating the above, engcon's booth provided visitors with the opportunity to meet several well-known excavator influencers who use engcon's products daily in their work. There was also the opportunity to test drive an excavator with a tiltrotator and see an experienced driver demonstrate how to best work with what engcon considers to be the market's most modern equipment.

ADAMAS
DIAMOND TOOLS

Toekomstlaan 9 - 2200 Herentals - Belgium
Aartsdijkweg 19 - 2676LE Maasdijk - The Netherlands

YOUR BRILLIANT PARTNER

WWW.ADAMAS.PRO

MEET THE NEW **AQUA CUTTER 750V**



Improvements

- » No pipe holes
- » Higher performance
- » Auto calculation for optimal settings
- » Aquajet precision drive
- » Extreme lance control
- » Patented Infinity oscillation system
- » No calibration needed
- » Remote start and stop
- » Boosted track speed
- » Auto distance recognition
- » Evolution 3.0 control system
- » Aquajet online





IACDS ANNUAL CONVENTION 2023

to be held in Venice, Italy

It is time for the IACDS annual meeting 2023, with the last time the industry met was at bauma in November 2022.

IACDS returns in 2023 stronger than ever. As presented in PDi issue 1-2023, this time IACDS will travel to Venice. The IACDS Annual Meeting 2023 will be held from the 25 to 27 May. There is still time to register for the event or become a sponsor. The meeting will provide an excellent opportunity to reunite with colleagues and professionals from the industry. The event is open to all professionals, direct members of IACDS, members of the national associations, and other organisations. The chosen venue is the Four Points by Sheraton Venice, Mestre Via Don Luigi Peron 4, Mestre, Italy, 30174.

This year's IACDS annual convention is sponsored by Hilti (Silver sponsor) and GSSI, Heger Diamond Tools, Husqvarna and Solga Diamant (Bronze sponsors).

www.iacds.org



CONFERENCE PROGRAMME

The programme for the event consists of:

Thursday 25 May 2023

- 15:00h – IACDS board of directors Meeting
- 16:00h – General Assembly meeting
- 17:30h – End of the professional programme with a coffee break, networking and exhibition
- 19:00h – Formal dinner to take place on the ship Galeone Veneziano II.

Friday 26 May 2023

- 09:00h – Official opening

Conference session 1

- Case story: Dismantling radioactive waste in concrete drums given by Mr. Roderich Braun, Braun Rückbautechnologien GmbH, comprising of such topics as the difference between homogenous and inhomogenous drums; why is there a need to dismantle them; how are the concrete drums dismantled.
- Industry topic: How to recruit and find people, given by Martin Goedickmeir, Hilti. This will comprise of such topics as the changing recruitment environment; the shortage of labour; how to become visible and attractive for employees and aspects of equipment and the working environment.
- Marketing and Internet, given by Mr. Gian Luca Benci, Alias, consisting of getting the industry known and how to create more impact.

Coffee break, networking and exhibition

Conference session 2

- Case story: Dry cutting of Belgian Reactor 3 Bioshield by Bart Geerkens, Iinterboring BV, covering such topics as status, techniques and lessons learned.
- Industry topics: How do we sell the benefits of our companies to attract labour, given by Ms. Julie White, D-Drill Masters Drillers Ltd.
- Can we create a global training and certification model? Presented by Mr. Joel Vinsant, DSA and Mr. Jose Blanco, IACDS. The rationale is that does the industry need international training standards to attract newcomers from a global audience; should we share a common platform for training and qualifications and should the drilling and sawing industry seek acknowledgement as a specialist professional trade.

Light lunch, networking, and exhibition

- 15:00h – End of the professional programme
- 19:00h – Informal dinner



HPW-DUST HIGH PRESSURE DUST SUPPRESSION

POWERED BY HYDRAULICS



HPW-DUST

HIGH PRESSURE DUST SUPPRESSION SYSTEM

- THE MOST EFFECTIVE DUST CONTROL
- TARGETED WATER MIST
- DOESN'T WET THE WORKSITE
- OPTIMAL WATER CONSUMPTION
- EASY TO USE FROM THE JOYSTICK
- EASY INSTALLATION
- WASHING GUN WITH HOSE REEL
- DOUBLE DUST BOOSTING SYSTEM AVAILABLE

HYDRAULIC EQUIPMENT FOR MOBILE MACHINERY

GENERATORS
 VARIABLE GENERATORS
 WELDING GENERATORS
 MAGNET GENERATORS
 MAGNETS
 INSTALLATION VALVES

POWER WASHERS
 STREET WASHING UNITS
 PIPE CLEANING UNITS
 DUST SUPPRESSION
 DRILLING FLUID PUMPS
 FIRE FIGHTING SYSTEM

AIR COMPRESSORS
 BIN WASHING SYSTEM
 POWER BOOSTERS
 POWER TAKE-OFF
 VIBRAS
 ETC.



DYNASET.COM

Dehaco demolition and sorting grabs

Also available with an integrated attachment bracket for quick coupler systems

DEHACO. THE BEST EQUIPMENT FOR A NEW BEGINNING...



Dehaco is looking for partners for our Demolition and Dust Control Units all over America!

Interested?

Please contact

Jeroen van Voorden.

@ jvanvoorden@dehaco.nl

+31 (0)6 - 53 23 87 53

Kruisbaak 25

2165 AJ Lisserbroek

The Netherlands

+31 (0)88 - 20 20 600

@ info@dehaco.nl

www.dehaco.nl





EFFICIENT TOOLS FOR A FULL RANGE OF CONSTRUCTION APPLICATIONS FROM AGP

AGP has developed a full product line of machines for many possible applications in the construction industry. According to AGP their machines are effective, reliable, and a joy to use, making many challenging tasks both faster and easier.

Drill motors

AGP's range of diamond coring motors is designed to be effective for quickly creating precise openings in reinforced concrete and brick. The motors are also used for plumbing tasks such as for installing water supply and sanitary system pipes. For electricians, they are used installing sockets, lighting, and conduit runs.

AGP produces both wet and dry systems ranging from traditional wet motors to standard dry motors, and even special motors for dry drilling of reinforced concrete. The TC402 tile core drill is designed for coring small diameter holes in tiles without cracking them, creating a clean hole.

Diamond hand saws

Diamond hand saws, such as the C14 and C16, being electric, are designed for indoor cutting tasks, for example in basements, as they don't produce fumes. They are also useful for hardscaping tasks, cutting garden tiles, clinkers and similar materials. Another advantage they

possess over fuel powered equipment is that when doing tasks that involve a lot of starting and stopping, there is no need to pull the engine.

Stone saws and wall chasers

The SCS7 stone saw is designed for stone installers, hard landscapers and tile contractors, being developed to deal with a range of natural and synthetic stone materials, cutting slabs to size, fitting facing stones etc. The CG150 wall chaser has been designed with electricians, plumbers and other construction professionals in mind, who need to chase in reinforced concrete at a maximum of 50mm depth of cut. The motor and dust free cutting operation also makes the CG150 a solution for cutting residential and commercial building materials, such as reinforced concrete and brick.

Dry wall sanders

The SB9 dry wall sander with rotary sanding action and high frequency brushless motor has been developed for painters, drywall installers, taping specialists, and renovation contractors. Weighing just 2.8kg, AGP states that it is the lightest tool of its kind on the market, being designed to minimise fatigue and thereby increase productivity. The G5 is purpose built and designed for concrete grinding performance while maintaining strict dust control. The variable constant speed function gives the tool excellent versatility, whilst the vertical design works especially well when grinding floors. By using different types of diamond cup wheels, a vast array of different tasks can be done, ranging from rough grinding and levelling, to stripping coatings and surface preparation for applying coatings, making it ideal for floor preparation and pool renovation.

www.agp-powertools.com



Keestrack

45l Diesel / Electric

Electric plug-in 250kWh



RECYCLING made possible with zero carbon footprint

Performance in every detail

keestrack.com



FIRST TIME IN ITALY FOR NEW BOBCAT PRODUCTS AT SAMOTER 2023

Bobcat is exhibiting at SaMoTer 2023, presenting several recently launched product lines and models for the first time in the country.

SaMoTer provides an ideal platform to show visitors the new ‘Ground Maintenance Equipment’ (GME) range from Bobcat, which includes compact tractors, small articulated loaders (SAL), mini track loaders, mowers and turf equipment. Building on the company’s success in the North American market, Bobcat aims to rank within the top three GME players in Europe and to double growth in the global GME market by 2027.

Compact tractors for versatility

All Bobcat GME models are designed to be robust and versatile, providing productivity and comfort. Representing the range at the Italian show, a cabbed version of the new CT2535 compact tractor will be on display on the Bobcat stand at SaMoTer for the first time in the Italian market. Bobcat is offering three compact tractor platforms – the 1000, 2000 and 4000 series – which feature nine new models with various power outputs designed to meet the different needs of customers in the EMEA region. Each model varies in size and engine horsepower, with the option to choose between manual and hydrostatic transmission, and between open canopies (ROPS) and cabs. Bobcat’s ‘Bob-Tach’ system comes as standard on all machines with the front end loader option, enabling users to switch between different Bobcat attachments, to carry out multiple jobs easily, delivering value and versatility for customers’ businesses. Francesca Biagini, Italy, Greece & Iberia Attachments - GME sales manager, comments: “These machines are versatile tool carriers thanks to their total compatibility with a wide range of Bobcat attachments that allow users to maximise productivity in any application such as gardening,

agriculture, construction, roads and snow clearing, to name a few.”

TL25.60 ‘super compact’ telehandler

Another debutante at SaMoTer 2023 is the super compact TL25.60 telehandler, launched at bauma 2022. It is designed for the construction, rental and general handling sectors, and is the 11th fixed frame telehandler model from the latest ‘R-Series’ range being the smallest machine in the line. Designed for maximum ease of use, the TL25.60 offers stability, optimal comfort and safe operation in a wide range of applications. Equipped with a Bobcat Stage V engine, the machine boasts a rated operating capacity of 2,500kg and a maximum lift height of 5.9m. Despite its super compact dimensions, the TL25.60’s cab is identical to that in the larger Bobcat R-Series models.

New electric mini excavator

The Bobcat stand will offer the opportunity to see a selection of the company’s most popular mini excavators, including the E20z, E27z and E55z/E60 models, as well as the first appearance of the new 2t E19e electric mini excavator, introduced in October 2022, part of the company’s ever expanding range of electrified machines. The E19e is designed to offer zero emissions, low noise, reduced vibration and provide the same performance as the popular diesel powered E19 model. The machine has been developed to build on the success of the E10e, said to be the world’s first electric 1t mini excavator. The E19e is has been designed to be extremely versatile, with a wide range of compatible attachments available. For example, Bobcat’s hydraulic grapple is said to be the only one on the market for this size category.



Reach another level with the Boss ‘Extractor 4000’

Deep pit excavation is tricky, expensive and labour-intensive work unless of course you have the Boss Extractor 4000. The ‘Extractor’ series come in a range of sizes from 20m up to 45m, and in the case outlined, was set up for a 40m reach using a Volvo EC480DL excavator complete with bespoke features.

Boss Attachments was appointed with customising the complete machine for optimal performance, making modifications including a glass floor to enable the operator to see directly over the excavation site. This was in addition to the twin camera system supplied showing exactly where the bucket is at all times with a 360° view. The cab of the machine is capable of sliding forward 2.6m and has an auto lock out system to ensure utmost safety so there is no fear of damaging anything, or more importantly, falling into the hole. The complete setup goes from the very front of the excavator all the way to the back to the 4.6t underslung counterweight.

The Boss Extractor 4000 features what the company says is a unique backfill function allowing operators to use the bucket to put dirt back into the hole where generally tele arms are used solely to take dirt out. The company believes this to be a very first for tele arms and says it is only available on the current Boss Extractor series. There are a range of buckets available, and the model viewed featured a 1.5m³ bucket that is capable of reaching the full 40m down in 13 seconds, picking up a load and coming back up in 15 seconds.

Ordinarily for deep pit excavation, an excavator below loading up a skip bin would be required as well as a crane pulling the bin up, and a second excavator up top for then processing the material once tipped from the bin. That’s three machines, three operators and two machines sitting idle the whole time. This is very expensive, very time consuming and awkward to say the least. The Boss tele arm makes that old process completely redundant. Furthermore, the arm is easily removed within minutes making it is easy to revert to having a standard excavator onsite as soon as required.

The Boss Extractor 4000 is ideally suited for foundation works, narrow excavation shafts, metro stations, underground parking, underground renovations, canal clearance, and much more.

www.bossattachments.com.au



A 12-year-old giraffe called Forest has been confirmed as the world's tallest giraffe, standing at



5.7m
(18 ft 8 in).

THE **BOSS** EXTRACTOR

can dig

ten times

that depth safely,
efficiently and
has around the
clock backup
and support.



M +61 418 280 342
E livio@bossattachments.com.au
www.bossattachments.com.au

BOSS
ATTACHMENTS



Growing interest in IDA convention and Demtech tradeshow to be held in Bengaluru, India in September 2023

Despite a growing recession in many markets globally, the building and construction business is doing very well in India. This is promising for the coming IDA convention and Demtech tradeshow in September.

“Organising the second edition of Indian Demolition Association (IDA) convention and Demtech tradeshow now in September is very good timing. The deconstruction, demolition, recycling, remediation and concrete cutting sectors in India are quite busy. There is a clear suppressed need to gather again among contractors and suppliers in India since the IDA and Demtech event in November 2019,” says Mohan Ramanathan, president of IDA and managing director of Advanced Construction Technologies Pvt. Ltd.

This time in Bengaluru

The IDA convention and Demtech tradeshow 2023 will take place on the 28-29 September at White Petals, Palace grounds in Bengaluru, India. Quite a number of sponsors and exhibitors are already booked for the event and several more are in process of booking. The number of participants at the convention is expected to increase to well over 600 persons, exceeding the number of 500 at the event in 2019 in Mumbai. “We have already received a great level of interest from a large number of contractors working in the Indian segments of deconstruction, demolition, recycling, remediation, hydrodemolition, concrete cutting, concrete floor grinding, etc. There is reportedly big interest among the contractors to find out more about foreign equipment technologies,” says Ramanathan.

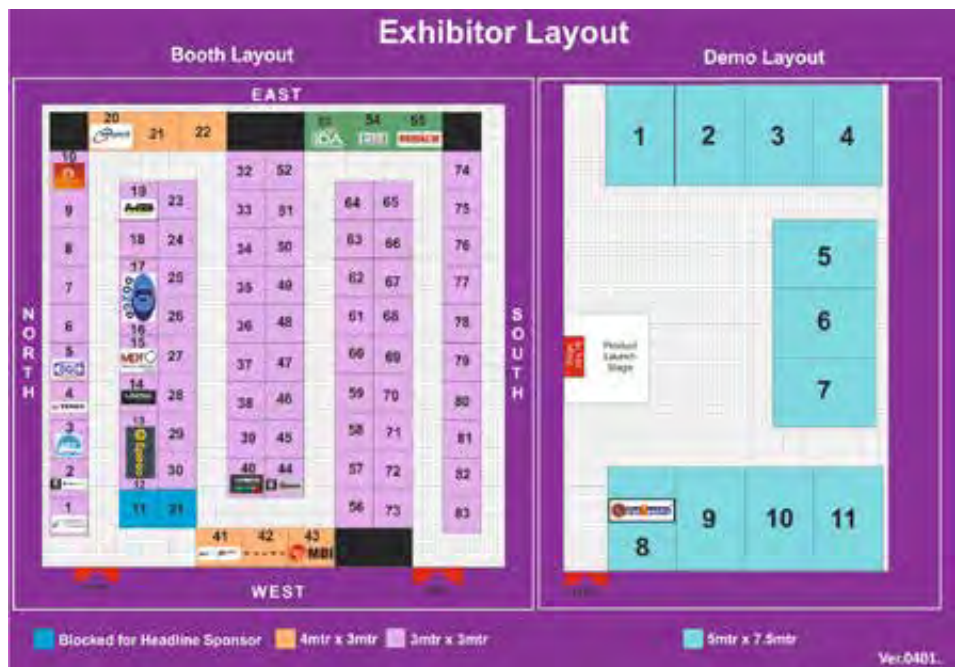
Several already booked and more to come

The committee responsible for the conference programme is now putting together the list of topics and its speakers. There will be two quite busy days. New for this year’s event is an outdoor demo area with plenty of space

to demonstrate machinery for at least eleven exhibitors. The indoor exhibition area has space for up to 80 exhibitors, depending on the size of the booths. However, the position as headline sponsor is still available. Affiliated sponsors of the event are so far Volvo Construction Equipment, Jet Demolition, Edifice Engineering and

Epiroc. Gold sponsors are MBI, Lissmac and Demarec. Silver sponsors are Indeco, Cut Maestro, Trevi Benne, Genesis Engineering, Terex and SDT Sanwa.

Exhibiting companies booked so far are Volvo Construction Equipment, Jet Demolition, Edifice Engineering, Epiroc, MBI, Lissmac, Demarec, Indeco,



Cut Maestro, Trevi Benne, Genesis Engineering, Terex, SDT Sanwa, Dee Tec, Annapurna Construction, SGC, MB Crusher, Dozco Breakers, MDT Madras Diamond, Professional Drilling and Husqvarna. The organiser of the event is IDA and its media partners are PDi Magazine, PDa Magazine and Professionell Demolering, as well as the Indian journal NBM&CW.

The chosen conference venue for the event is White Petals, Palace Grounds right in the centre of Bengaluru. White Petals is located near Mekhri Circle in the Karnataka capitol Bengaluru. Besides an extensive conference programme for two days there will be quite a lot of time to visit both the exhibition and demonstration areas for the conference attendees. On the evening of 28 September there will be a cocktail party, gala dinner with entertainment. Suggestions for papers, booking of sponsorships and exhibition space can be done through the Demtech website.

Optimistic IDA committee members

The IDA committee members are very excited about organising the second edition of the IDA convention and Demtech tradeshow. The IDA committee members currently comprise of president Mohan Ramanathan, managing director Advanced Construction Technologies Pvt. Ltd.; Jigar Chedda, partner at Edifice Engineering; Shriram D Matte, director Matte & Associates, Mumbai; Khil Jain, Jain Engineers & Consultant, Delhi;



Fazrulla Basha, director Abcon Concrete Surgeons Pvt. Ltd; Subramaniam Mohanraj, director Rapid Cutting Technologies India Pvt. Ltd. Chennai; Kannan Paulthurai, director P. K. Cutting Tech Pvt. Ltd. Chennai and Piyush Gandhi, director, Genesis Engineering, Mumbai. "I and the whole board of directors for IDA are quite

excited to meet fellow contracting colleagues from India and manufacturers and suppliers from India and the rest of the world in Bengaluru in September," commented Mohan Ramanathan.

www.demtech.in
www.indiademolition.org

**SYMMETRIC.
SUPERIOR.
ROBUST.**

The fully automatic SQ-V quickcouplers from Lehnhoff are based on the S-standard with superior valve technology and outstanding features:

- highest oil flow for maximum performance
- integrated depressurization unit
- reverse mode use of hydraulic attachments like crushing or tilting bucket



SaMoTer

3-7 MAY, 2023
VERONA, Italy

Live demo at **MB Crusher:**
Area E Stand 2

Exhibition at **Vimatek:**
Hall 10 Stand N3





ASHINE

Shining like a diamond

PDi Magazine met with Ashine Diamond Tools' president Richard Deng to talk about the company's latest offerings as well as the brand new 30,000m² factory which is soon to be inaugurated.

Established in 1993, the Xiamen based manufacturer Ashine Diamond Tools Co., Ltd. initially started out as a manufacturer of concrete grinding tools. In 1995, the company changed its core business to diamond grinding, adding floor polishing to the roster in 2004. Today, the company offers a variety of tools designed for surface preparation, concrete grinding and polishing, edging and stone restoration. At the latest edition of bauma, the manufacturer introduced some of brand new offerings.

Ceramic pads and ceramic cup wheels

Ashine introduced new ceramic bond pads at bauma which are transitional pads bonded with diamonds and ceramic powder, being suited for the quick removal of scratches left by metal bond tools. Ashine also presented the third generation of its ceramic cup wheels for transitional grinders and handheld angle grinders. The cup wheels are developed to combat a specific problem, namely grinding burn. "There is a common issue with ceramic cup wheels where the surface is scorched during continuous grinding for a prolonged period of time," said Ashine's president Richard Deng. "Depending on the scenario, these burns can affect efficiency and effectiveness, as well as cause diamonds

to fall off. With our ceramic cup wheels, there is no burning so that the user can maintain continuous fast grinding." Ashine continually updates formulas, and tests efficiency to improve tool performance. Deng

states that being designed for high efficiency, the cup wheels remove more material for each pass and leave a finer scratch pattern to save two to three steps of edge grinding work.

New factory, R&D and humanitarian work

In other news, Ashine has announced its brand new 30,000m² factory, which is soon to be inaugurated. The new production facility has been built to increase production rates and volume, as well as provide stability in the production chain. Other plans for the future include training and strengthening of the research and development team; a procedure is being undertaken together with a consulting company.

The manufacturer is also an active supporter of several aid projects and non-governmental organisations; examples being rescue teams, water saving measures and suicide prevention. In one example, Ashine donated to the Made Blue Foundation, an entrepreneurial charity focusing on clean drinking water in developing countries. For every pad sold by Ashine, a portion of the proceeds went to Made Blue. During the Covid-19 pandemic, Ashine has also provided face masks. Richard Deng concludes: "The reason for this is simply that I think companies should help others."



PDi's Vitor Hermansson together with Ashine Diamond Tools' president Richard Deng.

CAMS

IL FUTURO È VERDE

asphaltica
SaMoTer

Verona, May 3-7
Pavillion 11R90, stand D3

SAVE THE FUTURE

RECYCLING THE PAST



Hybrid drive

Full electric



camsrecycling.com



GROOVER & GRINDER

Ideal for the surface treatment of roads and airport runways

- + 426 kW / 575 PS + CE certified
- + Grinding shaft speed: 1.315 RPM - 1.900 RPM
- + Grinding width: 127 cm

A cooperation of Diamond Products, TYROLIT and LISSMAC.

LISSMAC

CONSTRUCTION TECHNOLOGY

Now available in Europe!

LISSMAC Maschinenbau GmbH
www.lissmac.com



Welcome! to our world



RM X SMART

IHR DIGITALER ASSISTENT FÜR MEHR PROFIT

#TELEMATICSSYSTEM

#DIGITALSOLUTION

#CONDITIONMONITORING

#SMARTSOLUTIONS

#RMNEXT



RUBBLE MASTER HMH GmbH | Im Südpark 196 | A-4030 Linz
+43 732 73 71 17 | sales@rubblemaster.com | RUBBLEMASTER.COM

steinexpo 2023

11th International Demonstration Show
for the Construction Materials Industry



23/8 to 26/8

Homberg/Nieder-Ofleiden,
Germany



GP GESTEINS
Perspektiven



ALLGEMEINE BAUZEITUNG
Wirtschafts- und Baugeschäft

GEOPLAN GMBH



Fon + 49 7229 606-29
info@geoplangumbh.de

www.steinexpo.eu



HELPING HANDS ON THE ROAD TO SUCCESS

While other trade fairs are still struggling with the consequences of the last few years, the current level of registrations for steinexpo 2023 is even higher than the comparable level for the last time the fair was held. More than 260 exhibitors representing around 370 brands have already booked their participation, with the major industry associations also being well represented.

In the beginning it was the BVNI (Association of German Natural Stone Industry), the predecessor association now known as MIRO (Association of German Mineral Raw Materials), who backed the fledgling steinexpo show. The European Aggregates Association (UEPG), the Construction Machinery and Building Material Plant Association of the Association of German Machinery and Plant Manufacturing (VDMA) and the Association of the Construction Industry, Environmental Technology and Mechanical Engineering (VDBUM) later added their support. Below are comments from associations stressing what steinexpo means to them and their members.

“MIRO has been the conceptual sponsor of steinexpo from the very beginning. Immediately after the fall of the (Berlin) wall, representatives of the former BVNI (Federal Association of the Natural Stone Industry) and the owner of the Stein-Verlag of the time, Wilhelm Jösch, put their heads together and ‘invented’ steinexpo. The idea was that companies from the East and the West in the natural stone industry and the supplier industry should come together at an ‘industry event’. The BVNI working group on Mining and Mineral Processing Technology, a body in which natural stone companies and the associate members of the association have been working together since 1981, welcomed this idea of a ‘performance show’ at German level. Showcasing exhibits in a large quarry, i.e. ‘on site’, and of course the demonstrations of the machines were particularly fascinating.

Despite the numerous brands that are now represented, you feel at home and every exhibitor invites you to talk shop, even just for small talk, by the way, because people from the industry know each other; it’s

like a get together of the big family ‘Stone’. Six long years have passed since the last steinexpo. We expect that there will be a lot of new equipment to see. It will also be of interest to see how the push towards digitisation initiated by Covid-19 has been implemented in practice and how it is being accepted. Energy efficiency and its implementation will also be a hot topic. And, of course, lots of handshakes with old acquaintances and new friends again,” explained Walter Nelles, MIRO.

“The steinexpo is an extremely well organised demo fair where those interested in the industry can see and get close to the machines in real life. We promote this event in our network and organise a supporting programme

in close coordination with Geoplan to make steinexpo attractive for visitors and to present the construction machinery sector for what it is: an exciting industry of the future. We started working together in 2008, and the decisive factor at steinexpo is of course its live character. This is where practical experience meets. There is an awful lot happening right now when it comes to the digitisation of the machines, and we are very excited to see what useful features we will be shown at the event,” commented Joachim Schmid, VDMA.

Dieter Schnittjer of VDBUM Service GmbH, added, “We have been supporting (show organiser) Geoplan’s impressive concept for organising and running steinexpo for two decades. We have an on-site information stand on the safe use of machines and equipment in the construction process. We very much look forward to the professional networking discussions on site at the event with trade exhibitors and all other interested parties – to find out which services we as association can use to meet the challenges of the industry together with our members.”

Dirk Fincke from UEPG reinforced these points: “Together with our German member, the Federal Association of Mineral Resources (MIRO), we would like to strengthen the European component of steinexpo and the potential for this. We have been present at the opening for several years. And the president of our association even had the honour to give an opening speech. It is especially in times like these that we need innovative solutions for more energy and material efficiency, recycling, biodiversity, electrification of machines, renewable energies and alternative fuels. Not only does the steinexpo offer solutions by offering catalogues and machines on exhibit, but also the opportunity to directly test machines and equipment in practical conditions. The newly acquired official partnership of steinexpo with IMA Europe (Industrial Minerals Europe, Brussels) represents another milestone in successful international industry cooperation.”

Ignacio Gentiluomo, of IMA Europe, concluded: “IMA-Europe is looking forward to take part in the steinexpo 2023. As the voice of the European Minerals Industry in Brussels, we want to get closer to our members and the industry as a whole. The steinexpo is a great opportunity to set an example for cohesion in our industry and showcase the best of the European mining industry. The industrial mineral industry stands more for sustainability, responsibility, occupational safety, and the implementation of ecological, technical future visions

than many ascribe to us. The steinexpo is a place to make this more visible to everyone and for scientific exchange and interesting networking at regional, European, and international levels. We want to support this and contribute through our partnership. As the decisive EU voice of industrial minerals producers and importers, we couldn’t miss this chance to meet with companies, authorities, and the broader value chain. We look forward to seeing everyone in August, demonstrating how we are helping and representing industrial mineral companies from Brussels.”





GERMAN DEMOLITION ASSOCIATION HOSTS

EUROPE'S LARGEST DEMOLITION CONFERENCE

On 3 March, the Fachtagung Abbruch took place in Berlin. 117 exhibitors and over 1,200 participants attended this year. The event, organised by German Demolition Association (DA) is by far Europe's largest conference on demolition and dismantling techniques.

For two years, the Fachtagung Abbruch was cancelled due to Covid-19, but in early March 2023 more than 1,200 representatives of the demolition industry and industry related companies came together again in the event halls of Station Berlin. As a result, there were more visitors than ever before. The convention contained a lot of information about current developments, technological innovations and interesting projects and took the opportunity for intensive information exchange and networking.

Sustainability central topic at the conference

The topic of sustainability and building material recycling was of particular concern to the industry this year. DA managing director Andreas Pocha emphasised in his welcoming speech that the demolition industry has been working for environmental protection for a long time. In Germany over 90% of all mineral construction waste is already recycled, in the case of construction rubble it is 94%. The EU demands a recycling rate of just 70% for mineral construction waste. "Recyclers and demolition contractors are the real environmentalists," says Pocha.

Using the great crises of our time as an opportunity for something new

This year's keynote speech was delivered by journalist and publicist Dr. Hajo Schumacher. The former Der Spiegel journalist drew a line from the dilapidated bridges in Germany to the current major crises, seeing German society at a crossroads at the time of the Ukraine war and climate crisis, asking for politicians to show more understanding. He added that politics is about the electorate, who at this time are weighted towards the elderly who do not necessarily want to solve urgent problems such as the climate crisis or digitisation. How-

ever, a crisis can provide possibilities, and Schumacher very much hoped that the current government would use the opportunities that arise from crises to lead Germany towards a better future. Finally, he asked that we take good care of our democracy, and do not lose sight of its advantages, as according to Schumacher: "Democracies can correct mistakes – dictatorships cannot."

'Ersatzbaustoffverordnung' under criticism

Several lectures dealt with the challenge of the change towards more sustainability for the demolition industry. Sarah Sinnwell and Michael Wagner from BST Becker Sanierungstechnik GmbH in Bottrop described the complex path that must be taken if a building demolition is to be certified by the German Sustainable Building Council (DGfB). The lawyer Dr. Peter Kersandt from the law firm AVR Berlin described the challenges facing the industry as a result of the Ersatzbaustoffverordnung, or the Substitute Building Materials Regulation, which comes into force on 1 August 2023. One of the problems is that there is still a lack of a legally secure regulation on the subject of waste end of substitute building materials.

Recycled building materials are good because they are tested

Thomas Fischer from Quba GmbH pointed out which paths must be taken for the certification of secondary building materials before they can be used in technical buildings or in construction products. The certification by Quba is currently the only one that is valid nationwide. Corinna Lee Schmitz and Gianna Kung from Bau- und Liegenschaftsbetrieb NRW showed how urgently these building materials are needed as the entire NRW state administration wants to be climate neutral as early as 2030. The construction sector is set

to play its part through recycled building materials, the recycling of components and the use of recycled and environmentally friendly concrete.

The industry masters demanding large scale projects

The challenges that major projects entail were shown, among other things, by the lectures given by Robert Oettinger from Oettinger GmbH on the dismantling of the KSC stadium, which had to take place during ongoing match operations. Stefan Scholz and Kurt Bicker from Max Wild GmbH talked about the demolition of the Neckar viaduct near Heilbronn which only allowed shipping traffic to be stopped for just 48h. Finally, the members of the demolition committee of the DA demonstrated using the example of the 'White Giant' residential complex in Duisburg that blasting is also possible in close proximity to other houses and has a great time advantage over conventional demolition.

The opportunity for exchange

The participants also used the day from 8 a.m. until well after midnight for intensive information exchange and networking. In the evening, attendees also relaxed while eating and drinking together at the so called dialogue evening, which was accompanied musically by the Berlin DJ Twizzstar.

Dates set for 2024

Interested parties can already save the date for the Fachtagung Abbruch 2024, which will take place on 22 March 2024 again at Station Berlin. Information on the demolition conference is provided by the DA via the <https://www.fachtagung-abbruch.de/> website. All other topics relating to the industry and the association can be found on <https://www.deutscher-abbruchverband.de/>



OUR KIND OF PLAYGROUND

This is the natural habitat for Brokk's compact giants. With the perfect combination of power, operability and accessibility our demolition robots provide efficient solutions to increase profits.





EUROPEAN DEMOLITION ASSOCIATION ANNUAL MEETING 2023

This year's annual convention of the European Demolition Association takes place in Amsterdam (as published in PDi issue 1-2023). Here we cover the detailed programme.

EDA's annual meeting will take place from the 15-16 June in Amsterdam this year. The venue is Corendon Village Hotel Amsterdam. This edition will be held in collaboration with Dutch Demolition Association, VERAS, and the European Decontamination Institute, EDI.



For registration and more information visit the EDA website
www.europeandemolition.org

CONFERENCE PROGRAMME

Thursday, 15 June

11:00 – Workshop on the subject of, 'Global status of nuclear decommissioning and related HR development and supply chain considerations', by Vladimir Michal, International Atomic Energy Agency and Johan D'Hooghe, Recycling Assistance BVBA (BE). This will contain an overview of the global status of decommissioning of nuclear facilities and the IAEA's thoughts on training and human resource development; specific conclusions of the IAEA decommissioning conference (May 2023) on supply chain and technology innovations; and examples of contractual and implementation practices, including those on demolition within nuclear decommissioning projects.
* This activity has a limited number of seats; interested parties need to be registered to participate and has a specific rate that also includes lunch.

Thursday, 15 June

Professional programme

15:00 – Workshop about environmental implications for the demolition industry, with three key presentations followed by a round table discussion.

NFDC commitment to Net Zero

Mr. Howard Button, National Federation of Demolition Contractors (UK) will present, covering the subject of environmental challenges faced by contractors managing POPs; the reuse of materials against traditional recycling methods and embedded carbon challenges.

Nitrogen on construction sites

Mr. John Van Herk, VERAS (NL)

Carbon auditing in demolition

Mr. Jonathan Cox, Rye Demolition, (UK), will explore the challenges facing SME demolition companies when conducting carbon audits; he will look at key steps in the process and recommendations to make carbon audits easy and a look at how a demolition company can become carbon neutral.

17:00 – General Assembly (for EDA members only)

19:30 – Welcome cocktail party open to all participants.

Friday, 16 June

Professional programme

9:00 – Official opening

Conference session 1

Erik Hoven VERAS, Stichting Veilig en Milieukundig Slopen (NL), will start the day, discussing certification and circularity as well as giving a roundup of demolition projects in the Netherlands. He will also discuss what the Dutch certification system consists of and circular demolition, whether it really exists and how to check circularity.

This will be followed by:

The challenge to recover and recycle mineral wool from demolition sites

Project wool2Loop, by Johan D'Hooghe, Recycling Assistance BVBA (BE), covering such subjects as scanning for materials using the pre-demolition audit; sourcing and pre-treatment of mineral wool from demolition sites and the use of processed mineral wool in a geopolymerisation application.

Coffee break, networking and exhibition

Conference session 2

Relevant Good Practice (RGP) on explosive and conventional demolition

Given by John Wolstenholme, Office for Nuclear Regulation (UK), covering such items as expectations for the concept, design, procurement and undertaking of a demolition project safely; the requirement for an engaged and adequately resourced intelligent client and competent project team not just a competent contractor, and the benefits and advantages of risking a demolition project to improve safety.

Power alternatives for demolition sites

Given by Mark Coleman, Coleman & Company Ltd (UK), concerning Input-Output, a snapshot of power sources utilised across sites and how that stacks in our journey to zero carbon; the transitional approach; driving cultural change and investing in research and development; the future through our eyes, and the alternative power sources mix and how we see it working for us.

Case study: Bnext Projecten

Given by Axel Hendriks, Bnext.NL Projecten (NL), covering how do we prevent circular greenwashing in deconstruction projects; how do material passports help to increase the value of the materials from deconstruction projects, and what do circular hubs contribute to a circular economy?

Lunch, networking and exhibition

Conference session 3

New EDA guide about high reach demolition

Given by Stefano Panseri, Despe Spa (IT).

Respiratory presentation on half and full mask with or without a blower

Given by Kai Salmi, Salmi and Co. Consulting OY (FI), covering such topics as personal protective equipment for decontamination and fit testing of masks.

Case study: Circular demolition of the city office in Roosendaal

Given by Arno Snellen, Gebroeders Snellen BV (NL), covering such topics as circular demolition and the opportunities that exist for the demolition contractor.

Case study: Sustainable demolition of the Anlaires, Narcea and Robla power plants

Given by Erik Sardonis, Lezama and Mr. Ángel Fudili, Naturgy (ES) covering the tender process and pre-demolition audit; D&D projects, best practices in security and circular economy and sustainability results, as well as discussing economic, environmental and social effects.

Coffee break, networking and exhibition

Conference session 4

EDA guide about recycling equipment given by Marcel Kerkhofs, Keestrack Group (BE)

Developing a market for recycled products. The Austrian experience

Given by Martin Car, BRV – Austrian Construction Material Recycling Association (AT), covering deconstruction, decontaminated and sorted recycling products; quality products with no waste, and the market, its framework and tendering practice.

Case study: Demolition of Carlsberg headquarters

Given by Christian Gravholt, P. Olsen (NL) & Paolo Scorza, Despe Spa (IT), covering the Covid complications on the project; environmental remediation; and the demolition of a high rise building in a busy environment. solved via the 'top-down' method.

End of professional programme.

19:00h Gala dinner 19.00h

Gala dinner at National Maritime Museum.

Sponsors of the event

This year's sponsors of the EDA annual convention are:

Gold sponsors: Steelwrist, VTN, OilQuick, Sennebogen, Dynaset and Caterpillar

Silver sponsors: MBI, ACDE Europe, Liebherr, Epiroc,

Kemroc, Rotar, Demarec and Volvo Arden

Bronze sponsors: MB, KTEG and Husqvarna.



Targeting your requirements to come up with a ground-breaking solution.



**Samoter 2023
Verona
3/7 May**

**Hall 10
Stand M2**

That's what we've been doing for over 45 years. Targeting your specific needs on your jobsites, delivering the best solution in terms of reliability, efficiency and productivity. Discover how, by scanning the QR code on this page. You will get an overview of the wide range of Indeco hydraulic hammers, to help you choose the model best suited to your needs, to your carrier and to the job at hand.

www.indeco.it

 **INDECO**

A TOOL FOR EVERY JOB



MULTI-FUNCTIONAL 48 T DEMOLITION MACHINE

830E

► DEMOLITION

Multifunctional and powerful

- 3 t load capacity at 23 m working height over 360°
- Numerous equipment options available

More safety and better vision

- Extreme stability due to wide support area (4.5 m)
- Elevatable and tiltable cab

Cost effective in transport

- < 3 m transport width
- Hydraulically unloadable counterweight (optional)

**NEW EQUIPMENT
WITH 23 M REACH**



For further information
► sennebogen.com/830-demolition



Telehandler

Balancer

Material Handling

Duty Cycle Crane

Crawler Crane

Telescopic Crane

Mobile Harbour Crane

Alexander Sturm

SENNEBOGEN
Vertriebs GmbH & Co. KG
94315 Straubing, Germany
alexander.sturm@sennebogen.de

SENNEBOGEN

