

Special Feature

COME AND DIG 'EM

pages: 15-22

Special Feature

Now Dust

SUCKS EVEN MORE

pages: 36-40

Shows

PLANTWORX 2017

pages: 42-46

Site Report

Demolition in the

CENTRE OF HELSINKI

page: 50

Reports

As Light as Sakura, AS SHARP AS A SAMURAI SWORD

page: 56

Site Report

The "Art" of

CONCRETE CUTTING

pages: 58-59

Associations

IACDS Annual Convention Best Meeting Ever!

pages: 66-70

Wall and Wire Saw PUZZLE

pages: 28-29

DURATIQ™

Experience a whole new level of floor grinding

www.duratiq.com



New digital control panel and remote control

DURATIQ's newly developed HMI also makes the machine very easy to control, set up and handle, even for operators at the beginning of their career.

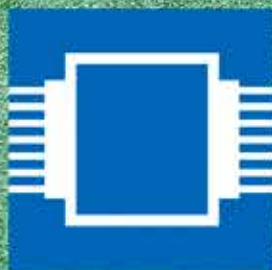


Completely re-engineered grinding head

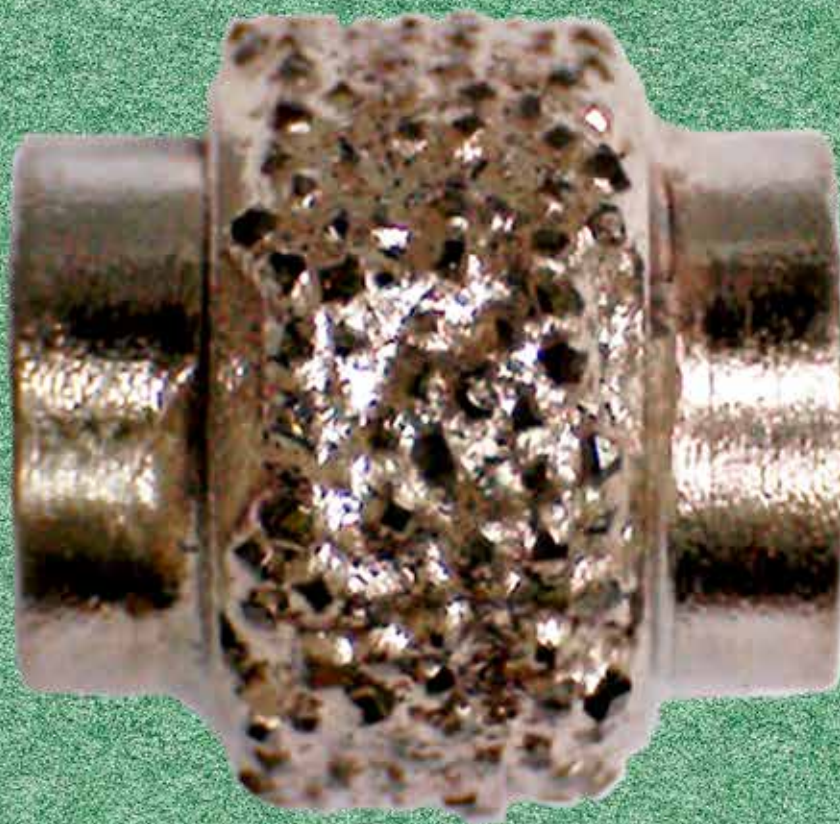
The completely dust-tight, hermetically sealed design increases the life of each component, while increasing the precision of your work.



www.htc-floorsystems.com



WIDECUT



ONLY DIAMOND WIRE.



PIPE CUT



CONCRETE CUT

- **Top Quality Assembly**
Reliable tool
- **Sharp Diamond Protrusion**
Extremely fast cut
- **Multi Diamond Layers**
Stable and long life

www.widecut.com



Professional Demolition International Magazine

Address: P.O. Box 786,
SE-191 27 Sollentuna, SWEDEN

Visitors address:
Skillingevägen 14A, SE-192 71 Sollentuna, Sweden

Phone: +46 8 631 90 70
Telefax: +46 8 585 700 47
E-mail: info@pdworld.com
Website: www.pdworld.com
ISSN Registration: ISSN 1650-979X

EDITORIAL STAFF

Editor-in-Chief
Jan Hermansson, Jan.Hermansson@pdworld.com

Assisting Editor-in-Chief
Anita do Rocio Hermansson,
Anita.Hermansson@pdworld.com

Editor Europe: Mikael Karlsson,
mikael.karlsson@pdworld.com

Editor North & Central America
Jim Parsons, jim.parsons@pdworld.com

Editor South America
Luiz Carlos Beraldo,
luizcarlosberaldo@gmail.com

Editor Recycling: David Ehrenstråle,
david@flaskborsten.se

Editor Asia Pacific: Barbara Grace,
barbara@cmma.org.au

Editor Russia & Eastern Europe
Andrei Bushmarin,
andrei.bushmarin@pdworld.com

Editor Africa
Kevin Mayhew,
kevinm@addixion.co.za

SALES OFFICES

International Sales Director
Germany/Austria/Switzerland/Liechtenstein
/Benelux/Finland/France/Spain/Portugal and Italy
Andrei Bushmarin
Phone: +7 921 949 27 81
E-mail: andrei.bushmarin@pdworld.com

Sweden, Norway & Denmark
Contact the Editorial Office
Phone: +46 (0)8 631 90 70, Fax: +46 (0)8 585 700 47
E-mail: info@pdworld.com

North & South America, UK & Ireland
Darren Dunay
Dunay Associates
P.O. Box 119, Westwood, NJ 07675, USA
Phone: +1 201 781 6133, Fax: +1 201 664 1829
E-Mail: darren.dunay@pdworld.com

**Australia/New Zealand/Asia Pacific/Korea/Japan
and rest of the world:**
Contact PDI editorial office in Sweden.

Publisher
Jan Hermansson

The magazine PDI, Professional Demolition International is published five times per year with a worldwide circulation of 10000 copies. The annual airmail subscription rate is US\$ 45. All subscription correspondence should be directed to: The subscription department, SCOP AB, P.O. Box 786, SE-191 27 Sollentuna, Sweden. PDI is mailed by second class postage. ©Copyright SCOP AB 2000-2014

Cover photo: US Demolition Association's Executive Director Michael R. Taylor at the EDA Convention in Madrid in June, 2014. © EDA.

PDI Magazine is a member of the following associations:



CONTENTS

PD*i* • issue no. 3 May - June 2017 • Volume 17

REGULARS

Editorials

6 An overall steady growth despite instability

Concrete Cutting is Sexy!

8 This is demolition

Business

8 Viva Alberto Mantovani!

New CECE Secretary General

10 Atlas Copco opens new South Carolina facility

Blastrac NA expands in Colorado

Hilti acquires Oglænd System Group

Deutz sells its Cologne-Deutz site

Stop. Make a change!

13 Hilti sales up in the first four months

Building material plant manufacturers optimistic

Hilti one of Europe's best employers

Wacker Neuson record revenue in first quarter

Allu appoints new dealer for Ireland

Wacker Neuson chief executive departs

Jobsite Report

48 Chicago Pneumatic breakers first choice in Qatar

Teamwork led to success in Chicago I-90 project

D-Drill goes to college

50 Demolition in the centre of Helsinki

Contractor opts for dsb innocrush 30

51 Hands-on demolition

MB Crusher upgrades screening bucket

58-59 The "art" of concrete cutting

61 Turning a bank vault into a police office

News

24 Metso's new shredders

Komatsu introduces new dump trucks

Prineth upgrades the Panther T16

26 Atlas Copco expands HiLight tower range

Allu launches new processor

Klindex launches Maxi Orbit



- 30 New Tyrolit DWL*** -CF diamond wire
A Power Cutter from Guarda Systems
No fumes with Guarda Fume Tube
- 32 EcoClear nominated for prize at CN Awards 2017
Kramer hosts Expert Days
Genesis grapple reduces maintenance
- 34 GSSI Unveils StructureScan Pro
New Rockster Impact Crusher R1000S
Kobelco's smallest excavator
CTT 2017 demonstrates stability
- 41 Best performances combined with modern solutions
- Reports**
56 As light as Sakura, as sharp as a Samurai sword
62-64 Knowledge of rental and contracting
- Shows**
42-46 Plantworx 2017
- Associations**
52-54 DDR Forum and Expo 2017
66-70 IACDS Annual Convention 2017
70 CSDA releases new specifier resources

Special Features

- 15-22 Come and dig 'em
- 28-29 Wall and wire saw puzzle
- 36-40 Now dust sucks even more



FRD
FURUKAWA

WHERE EXPERIENCE COUNTS

An overall steady growth despite instability

Dear Reader

With so many political changes in the world it is quite surprising that the economy in many markets is stable. At the latest meeting of the International Association of Concrete Drillers and Sawers in Vienna, the majority of the member associations from all corners of the world said that their concrete cutting businesses were doing very well. The need for new housing and commercial buildings is still strong in many markets and this trend is believed will continue and probably also next year.

However, in Europe there is concern due to the unexpected result of the recent general election in the UK. The fact that the UK's conservative party did not strengthen its position, which it hoped for, could possibly make the Brexit negotiations more difficult. Even so the process of the UK leaving the European Union will be completed by the end of March 2019, whether a deal is reached or not, and during this period we can expect uncertainty from both parties.

The UK is a very important market for many manufacturers of demolition, concrete cutting, dust extraction, concrete floor grinding and polishing and mobile recycling equipment. I believe UK manufacturers are hoping for a swift negotiation so the effects on exports and imports will not be too damaging. By the time you read this issue the Brexit divorce negotiations between the two parties will have started. It is believed from the EU that any possible plans of a re-marriage can be discussed before the divorce is settled.

The UK has gone through a very difficult and sad period recently due to the political situation, the terrible terrorist attacks and the tragic London tower block fire, where many people have been killed and severely injured. Our thoughts and prayers are with the British people at this difficult time.

This issue of PDi contains many interesting articles and special features, for example, on mini excavators and dust extraction and wall sawing equipment. There is also a report from the IACDS meeting.

I also would like to take this opportunity to thank our readers, advertisers and contributors for your encouragement and support during the first half of 2017. I wish you a pleasant and relaxing summer vacation and continuous prosperity in the second half of the year.



Jan Hermansson
Editor-in-Chief
jan.hermansson@pdworld.com

Words from the IACDS President

Concrete Cutting IS SEXY!



Another month goes by and another strange election result has left the UK with a great deal of uncertainty. I do not like to burden you with issues that are solely UK based, but there is no doubt that the political uncertainty that has been thrown up in the past year or so does have an impact on confidence among business.

As such, I was asked to give my views by the BBC nationally and also by overseas TV stations and was delighted to be able to give the perspective of specialist construction contractors. I believe the media has really woken up to the importance of our sector. All of this came just a couple of weeks after the very successful International Association of Concrete Drillers and Sawers meeting in Vienna. This gave us a great opportunity to reflect on some of our achievements as an association, but also to look forward and see where we can continue to improve.

Ultimately, the role of any association is to be relevant to its members and to provide added value to them. When we looked back on what we have managed to achieve in the past couple of years, that certainly shone through.

We have finally released the anchoring and tolerances documents. It has been a bumpy ride at times, because we were drawing together information and evidence from countries right across the world, all of which have different perspectives. The tolerances document is an update, but the piece of work on anchoring is a completely new standard and will become a worldwide reference. The only reason this was possible is down to the fact that it has had worldwide backing.

In terms of communications, we have made a very strong breakthrough on the web. We have gone from having quite a passive presence to being extremely active, regularly publishing articles and contents on our website and social networks.

Again, we have learned valuable lessons. Our LinkedIn Group has not taken off in the way we might have hoped, but our Facebook Group has gone from strength to strength and is growing extremely rapidly.

Our database of contacts has grown significantly and is now much more detailed with contractors, suppliers and potential associations all listed. Our newsletter

is now distributed to more than 2,000 individuals, including many members of concrete cutting associations around the world, which is again, very positive. We are striving to attract new members all around the world and have been speaking to businesses and individuals in Italy, Denmark, the Netherlands, New Zealand, Australia and India where there are no national associations, but where they may wish to become part of IACDS.

A new membership brochure has also been created to underline the many benefits of being members.

So, I guess the question we must continue to pose to ourselves is why we are relevant to our membership and how we must always be striving to offer more and, as ever, I would always welcome your feedback on that.

What do you get from IACDS that is important and what more could we deliver to make the association even more integral to your business. In my view, it all comes down to the expertise that we can bring together, both on contractor and supplier sides, and how we make the most of that. How do we continue to bring together the global community to get full use of that expertise through social media and beyond?

We want our members to feel visible too and we want them to know that there is a place to tell their story and to show off some of the amazing things they do on a daily basis, so let us find a way to get those work related photos and videos off your smartphones and showcase the brilliant things you are doing. I am proud of our industry and what makes us different and unique to any other. That is why I am always happy to jump out of my comfort zone and talk to the BBC about general elections, not because I am a politician, but because I want the world to know that concrete cutting is sexy.

I have no doubt that there are challenges ahead and providing we continue to highlight what makes us different and stand out from other industries we will be in good stead.

I would very much welcome your thoughts on this, so drop me a line at juliewhite@d-drill.co.uk.

Julie White, President of IACDS

LAVINA

- ✓ Minimum impact on the operator who just sets the grinder path.
- ✓ Constant speed of grinding & minimum risk of operator's mistakes going too fast or too slow.
- ✓ Forward & Reverse options, plus Neutral gear for moving the machine.

No more pushing your grinder!

SELF-PROPELLED GRINDING AND POLISHING



L32M-X-E
814mm work path;
6 x 225mm heads;
18,5 kW motor;
3 phase, 380-400V, 32 Amp

L30LM-X-E
765 work path;
3 x 335mm heads;
11 kW motor;
3 phase, 380-400V, 30 Amp

L25LM-X-E
655mm work path;
3 x 225mm heads;
11 kW motor;
3 phase, 380-400V, 30 Amp

www.superabrasive.com



SUPERABRASIVE

Words from the EDA President

THIS IS DEMOLITION

After the DDR Forum & Expo 2017, held in Brussels in June, we are proud to say that demolition has been brought to attention.

This event, where we had the opportunity of welcoming the delegates in the opening ceremony with our colleague Scott Knightly, the president of National Demolition Association in US, was an exceptional initiative.

The EDA gathered several related trades from around the demolition industry, which highlighted the current importance of our profession, especially in the Circular Economy.

This first event was the proof that demolition cannot work in isolation and proving that all professionals involved need to work together.

For this reason, we would like to thank the EDA Members, Delegates of National Associations, Federations, Institutional Partners and all related stakeholders for their participation, not forgetting the exhibitors, who made the event possible.

In addition, we especially thank the European Commission for its participation as Institutional Partner of the event and as speakers, something which is very important for the EDA that strengthens the close relationship between the Association with this Institution.

We do believe this has been the first stepping stone for future events concerning the Circular Economy.

As another example of this connection with the European Commission, EDA has been invited to participate in the "Construction Conference: Let's build changes!", a meeting organized by the DG GROWTH where all decision makers of the sector are involved.

Focusing on other activities that emphasize the importance of the demolition industry was the fantastic DEMO EXPO 2017, held in June, and organized by the National Federation of Demolition Contractors, NFDC, and the Institute of Demolition Engineers, IDE.

This show was the largest ever organized, further proof that the demolition industry is in good health, with high participation of supplier companies showcasing machines and equipment.

Indeed, the NFDC does not stop, and in August will celebrate its Annual Convention, in Malta, in order to continue with the work has been done in the last years and design the road map for the future.

To finalize, and returning to the EDA, along with activities and events, the recent publication of the European Demolition Industry Report 2017 also reinforces the industry.

This document is the third edition, and it contains detailed information about the trends of the demolition industry in 2015-2016, forecasts and specific information about European companies, volume of business and evolution of the demolition activities, among others.

We would like to take the opportunity and encourage all related professionals to visit the EDA website and access this publication.

We may have forgotten to mention other activities, events and milestones that improve the image of the demolition industry, but the message we wish to convey is that our industry is in good health, and that we must continue to work together and feel proud to say: This is demolition!

About EDA

The EDA was founded in 1978 and is the leading platform for national demolition associations, demolition contractors and suppliers. The EDA has a strong focus on developments in Europe, which are of interest to the demolition industry.

info@europeandemolition.org
www.europeandemolition.org



William Sinclair



Viva Alberto Mantovani!

On 8 May 2017, Alberto Mantovani, the founder and former chief executive of Italian attachment specialist Mantovanibenne, celebrated his 80th birthday. Mantovani is a demolition industry stalwart known and respected well outside his home country.

He founded Mantovanibenne in 1963 as a small workshop producing excavator buckets and steered its growth to the position of a global market leader. It takes vision and incredible toughness to accomplish a task of this magnitude, but Mantovani proved his abilities as a leader repeatedly over decades. His latest feat came in 2012 when a powerful

earthquake demolished half of the company's facilities in Mirandola nearly obliterating his lifetime's work. The earthquake might have shaken buildings but not Mantovani's spirit. He came out of semi-retirement to lead Mantovanibenne once again. It took the Italian manufacturer just a little over a year to restore the Mirandola facility to full capacity and regain its status as an industry trendsetter. Mantovani's children Paolo and Roberta now run Mantovanibenne. PDi congratulates Mantovanibenne's founder on his milestone anniversary and wishes him a long and happy life.

www.mantovanibenne.com



New CECE Secretary General

The Committee for European Construction Equipment has appointed Riccardo Viaggi as Secretary General to represent the sector towards the EU institutions and manage the association's Brussels office. Previously Viaggi was Secretary General of the European Builders Confederation since 2009. In this function, he represented European construction enterprises from the 20 affiliates and partners of EBC in Brussels.

"Riccardo has a strong management experience and solid knowledge of our industry and the Brussels' political environment. I am

looking forward to working with him," said CECE president Bernd Holz.

The appointment of the new Secretary General was proposed by CECE's Steering Group and confirmed by the association's presidents' committee in April 2017. Riccardo commented: "I am looking forward to working together with CECE's members, partner associations and other stakeholders in order to promote the interests of our strategically important industry towards the European Institutions," said Viaggi.

ZENESIS®

WORLD'S MOST ADVANCED
PATTERNED DIAMOND TECHNOLOGY



New
edition R





Atlas Copco opens new South Carolina facility

Atlas Copco has opened a new \$25M (€22M) production facility in the US at Rock Hill, South Carolina to enhance its support for the North American construction market. The 18,300m² plant, which replaces the company's original facility in Rock Hill, serves as the production and assembly facility for Atlas Copco's North American Construction Technique division

manufacturing generators, portable compressors and other equipment.

The opening, attended by about 400 employees and guest, featured a VIP tour, ribbon-cutting and presentations by, of Atlas Copco president and chief executive Mats Rahmstrom, Atlas Copco Portable Energy division president Peter Lauwers and Atlas

Copco Construction Technique Business Area president Andrew Walker.

"This is a landmark day for Atlas Copco in the US," said Atlas Copco US president Scott Carnell. "The new facility strengthens our commitment to producing superior equipment and customer support and it aligns perfectly with our mission of sustainable productivity."

Blastrac NA expands in Colorado

Blastrac NA, based in Oklahoma City, and specializing in surface preparation equipment, has expanded its operations with an additional location in Colorado at 7140 Ivy Street Unit E, Commerce City. Blastrac NA has several sales, rental and repair locations throughout North America.

The new facility will provide sales, rental and repair and also carry products local contractors can collect when working on surface preparation jobs.

An Open House was scheduled for 23 June 23rd where Blastrac was to display its products and services on offer. Regular business hours are Monday to Friday, 8:00am to 5:00pm. Blastrac employee Zach Tessel is the rental/service technician and can be reached at 01-913-444-0359. Josh Martin is the area sales manager and can be reached at 1-800-256-3440 or 01-405-503-7776.

"With this new location, Blastrac NA will be able to fulfill our customers' needs in Denver and surrounding area," said Blastrac NA president Mark Haworth.



Göteborgs Gräv & Maskin chooses Liebherr

The specialist Swedish earthmoving and excavating contractor Göteborgs Gräv & Maskin has been working closely with Liebherr since 2012 and currently has five of the German company's crawler excavators. These include

an R 936 Multi User crawler excavator, which has an 8.55m straight monoblock boom and a 6.3m long stick for long-reach digging. Two further Liebherr machines are awaiting delivery.

Hilti acquires Oglaend System Group

Hilti Group is extending its business in the oil, gas and wind offshore markets with the acquisition of Norwegian Oglaend System Group, a leading manufacturer of cable management solutions and multidiscipline support systems for the offshore industry. The purchase price has not been disclosed and the transaction is subject to approval by the antitrust authorities.



Deutz sells its Cologne-Deutz site

German engine manufacturer Deutz has sold the land occupied by its former Cologne-Deutz site to project developer Gerch Group.

The premises, which cover an area of around 160,000m², are no longer required following the site's relocation to Cologne-Porz. Gerch Group intends to redevelop this former industrial site to create a new city district with a high proportion of housing.

Deutz expects to receive a sum around €125M as purchase consideration this year. Depending on completion of the planning process, Deutz anticipates a further, final instalment to be determined.

Stop. Make a change!

At the UK's Keltbray Group over 1400 people have taken part in what is believed to be the UK's largest ever safety stand-down campaign; Stop. Make a Change. This is a safety campaign focused on four themes: fatigue, mental health, respiratory illness and plant safety. It has been organised by the Civil Engineering Contractors Association and is backed by the Health & Safety Executive. "We in construction have traditionally not been so good at recognising what a significant role wellbeing plays in minimising the risk of incidents," said Keltbray's Group Managing Director, John Price. "We therefore see this campaign as a good opportunity to get a better dialogue going when it comes to addressing this as well as the other key accident risks."



New products!

DRS-FLOOR

efficient concrete solutions from a single source

**Shot blaster
DSBM-400**



**Crack and joint
chaser DCS-200**



DBS-820-4H A-Laser



**Crack and joint
repair solutions**





Durable Performance

Increase the capabilities of your concrete cutting and demolition toolbox. Operate a full range of Pentruder High Frequency equipment simply by connecting the same Pentpak, remote control, motor, and cables to a wall saw, a wire saw or a heavy duty core drill.

All Pentruder equipment is Made in Sweden. We produce precision parts in-house, from the best materials, in state of the art production machines. With over 35 years of experience from designing concrete cutting equipment, we know how to build high performance, durable systems.

Visit our website for more information and contact details to our distributors: www.pentruder.com
Or check out our facebook page www.facebook.com/pentruder or Instagram [pentruder_official](https://www.instagram.com/pentruder_official)

Pentruder®
CONCRETE CUTTING SYSTEMS

Designed and manufactured by:
Tractive AB | Gjutargatan 54 | 78170 Borlänge | Sweden
Tel: +46 (0)243 221155 | Fax: +46 (0)243 221180
E-mail: info@tractive.se | www.pentruder.com





Hilti sales up in the first four months

Sales of the Hilti Group were up 4.9% in the first four months of 2017 compared with the same period last year. After adjusting for the sale of the solar company Unirac, sales in Swiss Francs were up 6.1%.

Strong growth was achieved in North America with an increase of 7.6% and 8.5% in Eastern Europe / Middle East / Africa. In Europe Hilti posted growth of 5.5%, while the Asia/Pacific region increased by 2.6%. Against the backdrop of the ongoing economic crisis in Brazil, the sales increase of 7.6% was achieved in Latin America.

"Following a slower start into the year, our business has regained significant momentum in the past two months," said Hilti chief executive Christoph Loos. "For 2017, we will continue to adhere to our objective of achieving slightly higher sales growth than in the previous year. Furthermore, we will proceed on our investment course focusing on our product portfolio and sales capacities."

Building material plant manufacturers optimistic

Despite all heterogeneity, German manufacturers of building material plants are expecting a broadly based boost in 2017. Even at the end of 2016 the orders received in most subsectors had risen considerably compared with the previous year.

"This should translate into sales growth over the next few months," said economic expert on construction equipment and building material machinery Sebastian Popp, who was speaking at the Building Material Plants Day, held by the German Engineering Federation (VDMA) in Frankfurt as an exclusive event for its member companies.

Hilti one of Europe's best employers

Hilti has been ranked among Europe's best multinational workplaces by the Great Place to Work Institute. This year, the construction technology group came in seventh place.

"As team members, we all realize that we are playing a part in creating our corporate culture and help shape our work environment. Thanks to this motivation, our teams are fully dedicated to their company all around the world and thus spur its innovativeness and differentiation on the market,"

said Hilti head of global human resources Sabine Krauss.

In the surveys carried out by the Great Place to Work Institute, Hilti has a consistent track record of excellent overall satisfaction scores and is perceived as a great employer by up to 90% of its employees. Other positive points standing out in the surveys were the constructive work climate, personal career opportunities and the family-friendly attitude of the company.



WACKER NEUSON RECORD REVENUE IN FIRST QUARTER

The German international light and compact equipment manufacturer Wacker Neuson has posted a record rise in revenue for the first quarter of 2017. Revenue rose to €338.5M, a 7% increase on the previous year's €316.4M. Adjusted to discount currency effects, this corresponds to an increase of 6%. "The year

has got off to a very promising start for our Group. The investment mood among many national and international customers in most of our target industries was very positive. This pushed our revenue to a new record high for a first quarter," said Wacker Neuson chief executive Cem Peksglam.



Chicago Pneumatic joins forces with Genelite

Chicago Pneumatic has joined forces with Genelite, one of Australia's largest independent manufacturers, suppliers and distributors of generators and associated products, in a

new distribution arrangement for its range of compressors, generators and lighting towers. Genelite has a network of 65 dealers across the country with facilities in Brisbane and Perth.



Allu appoints new dealer for Ireland

The Finnish manufacturer Allu has appointed Powerscreen Ireland as its new distributor throughout Ireland. The dealership will see Powerscreen Ireland supplying the comprehensive range of Allu Transformer attachments, and provide full aftermarket care, spare parts and dedicated customer service.



Wacker Neuson chief executive departs

Wacker Neuson chief executive, Cem Peksglam, is leaving the company. His six-year contract will expire in August 2017.

"The Wacker Neuson Group Supervisory Board respects Mr. Peksglam's decision and thanks him for his dedication and service over the last six years," said supervisory board chairman Hans Neunteufel. "Mr. Peksglam has played an important role in proactively shaping and driving forward the reorganization and strategic realignment of the Group during what has been a crucial restructuring phase for the company. His huge personal commitment has made the company a more professional organization and laid the foundation for further expansion." A successor will be announced in due course.



HSD

PROFESSIONAL DIAMOND SOLUTION

EDIA

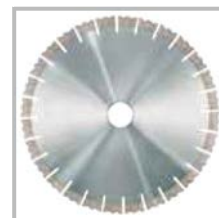
EVOLUTION OF DIAMOND IMPREGNATION ARRAY



EDIA, LASER HANDHELD,
THIN & SHORT EXECUTION



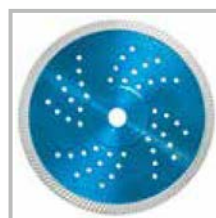
EDIA, WALL SAW BLADE



EDIA,
SPLIT TURBO EXECUTION



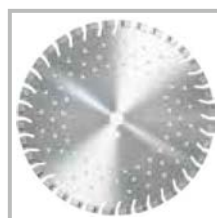
EDIA, RING SAW BLADE



RAPTOR TURBO CUTTER



SONIC, CERAMIC CUTTING



SHORT SEGMENT EXECUTION



TRIANGLE CUP



EDIA ROOF TOP
CORE DRILL SEGMENT



VACUUM RESCUE BLADE



POLISHING PADS



WIRE SAW

- Continuous development of new products and of new technology
- Competitive price to your profits
- Sustainable quality
- Quick delivery from warehouse in Germany
- Perfect product safety by new EN 13236

HSD Europe GmbH

Mergenthalerallee 77, 65760 Eschborn, Germany Tel. +49 (0) 6196 96 79 00 Fax. +49 (0) 6196 96 790 15 E-Mail. info@hsdeu.com



COME AND DIG 'EM

Many new excavators have been introduced in the past year. PDi editor Jim Parsons reviews the latest arrivals.

Case Construction Equipment's new C Series mini excavator line consists of six models ranging from 1.7t to 6t and will be further extended during 2017 resulting from the brand's alliance with HHI.

The new C Series delivers more reliability, more productivity and safety features. They are designed for performance and reliability, with components sourced from Japanese suppliers. The proven engines and hydraulic systems deliver more power, raising the machines' performance. Five of the six new models comply with Tier 4 Final emission standards.

The new mini-excavators are loaded with features that will make the operator's work easier, more comfortable, and more productive. They include the new digital cluster that provides information and warning lights, the standard engine start limitation anti-theft system, the hydraulic quick coupler for fast attachment changes, the electric refuel pump, and many more.

Safety features include ROPS, TOPS and FOPS compliance, emergency stop switch, travel alarm, and object handling kit. The safety valves prevent loads from slipping in case of hose failure. The pilot system with accumulator enables the operator to put the attachment down safely even when the engine is off. The double flange rollers minimise the risk of detacking and improve stability. The all-around visibility and rear view camera enhance safety.

Customers looking for machines to work in confined spaces, the CX17C and CX18C offer the solution. Both feature hydraulically retractable tracks with inner routing of hydraulic hoses. When the tracks are retracted, the

machines are less than 1m wide. The CX17C features a ZTS design, which ensures there is no risk of hitting an obstacle with the back of the machine when swinging.

The CX17C and CX18C's hydraulic flow delivers outstanding digging efficiency, 5% higher than the previous models, and fast cycles. The auto shift down function on the CX17C, which optimizes traction and speed and the joystick controlled auxiliary hydraulics, enable the operator to get the job done faster. The operator station offers high comfort, with smooth pilot controls, ergonomically placed joysticks, adjustable wrist rests and a suspension seat as standard.

The 2.6t CX26C and 3.7t CX37C are available with a choice of long and short arms, which deliver a maximum dig depth of 2,645mm and 2,420mm respectively for the CX26C, and 3,440mm and 3,135mm respectively for the CX37C.

These two models come with an offering of features. In addition to the choice of arm length, they are available with additional counterweights and rubber tracks. Steel tracks are also available on the CX37C.

The standard equipment includes an emergency stop switch, pilot system with accumulator, two-speed travel with auto shift-down system, a foldable boom swing pedal, anti-theft system, centralised greasing inlet and waterproof digital instrument cluster. The first and second joystick controlled auxiliary hydraulics makes it possible to use a wide variety of attachments.

Topping the C Series range are the CX57C and CX60C, which stand out for their best-in-class engine power and lifting capacity and comfort features. These include factory readiness to accommodate the latest technologies that make the operator's job easier.

The spacious cab with ample legroom, together with the ergonomic seating and control layout, fully adjustable, heated seat, multiple storage compartments, and sunshades, make for an extremely comfortable operator station. The quiet operation and low vibrations, result-



ing from the cab being mounted on silent blocks, add to the operator's comfort and fatigue-free workday. The standard auto-idle further reduces the noise when the machine is not working.

The 5.7t and 6.0t models feature an instrument cluster with a multi-colour, 145mm LCD touchscreen. The convenient hands-free system with USB and AUX ports, SD card reader and 12V power outlet make it easy to integrate most modern mobile devices.

Kubota's new KX033-4 compact excavator

The Kubota Tractor Corporation has announced the KX033-4 compact excavator. The KX033-4 is powered by a 18.5kW Kubota direct injection Tier 4 Final certified engine. Adjustable auxiliary hydraulics allow the operator to program up to five different oil flow rates, controlled from a digital control panel. It has a breakout force of 3.7t and a digging depth of 3.2m.

The KX033-4 has a new control panel with five adjustable presets for precise flow control for the attachment and task at hand. The auxiliary hydraulic circuit is capable of a maximum oil flow of 60litres/min to power a variety of auxiliary attachments.

The standard third-line hydraulic return system allows oil to return directly back to the tank without flowing through control valves. This results in less back-pressure, less heat, and greater efficiency. An accumulator clears residual pressure, allowing for easier attachment changes and helping lower front attachments even when the engine is turned off. A standard float function allows for clean-up and back dragging.

The KX033-4's low centre of gravity and double flanged track rollers also contribute to safe and efficient operation. The engine speed may be set to automatically idle when KX033-4 control levers are in neutral for more than 4s, resulting in increased fuel efficiency and lower noise and emissions. A swivel negative brake and travel negative brake automatically lock the swivel function and tracks, respectively, to prevent unexpected machine movement.

The KX033-4 operator station features Kubota ergonomics that simplify routine excavating operations. The high-back suspension seat provides maximum operator comfort, including weight compensation and adjustable wrist supports. A wider digital display panel with push button operation allows for easy monitoring of critical controls.

The Aux1 operation switch is located on the right joystick control lever. Dozing operations are made faster and easier with a two-speed travel switch on the dozer lever. The KX033-4 automatically shifts from high to low when needed in heavy dozing applications. As the load becomes less, the excavator will automatically shift back to the higher speed. A larger cup holder may hold a beverage, or a cell phone and a charging port is included. A ROPS/OPG canopy is standard. The optional cab includes air conditioning, more foot space with a wider door, and a gas-assist mechanism that makes it easy to open the front window.



Hyundai introduces new model in 9A series

Hyundai's new R30Z-9AK is a 3t class model that features a zero-tail swing design for working in confined spaces. The R30Z-9AK excavator is powered by a Kubota engine delivering 17.3kW. Its maximum digging depth is 2,490mm, and maximum digging reach is 4,648mm. Bucket breakout force is 20.1kN. Configured with a canopy, the R30Z-9AK has an operating weight of 2.89t. When specified with an optional cab, the machine's operating weight is 3t. Standard bucket capacity is .076m³.

An innovative hydraulic system makes the 9A series fast, smooth and easy to control. Each model includes boom swing capability, enabling the operator to offset the boom 75° to the left and 50° to the right, which allows for close work alongside structures, especially in congested areas.

The spacious, ergonomically designed cab reduces noise and increases comfort and visibility. A tilting left side console makes it easier for the operator to enter and exit the cab, and the left and right control levers are located for convenient access. The optional lever pattern change valve allows joystick control to be changed from SAE to ISO pattern. Button selections are provided for auto idle mode, max power mode and travel speed.

An adjustable suspension seat and plenty of space help reduce operator stress and fatigue. The cabs on the Hyundai 9A series machines are all TOPS, ROPS and FOPS certified. Other safety features include optional boom and arm cylinder locks, and an optional overload alarm.

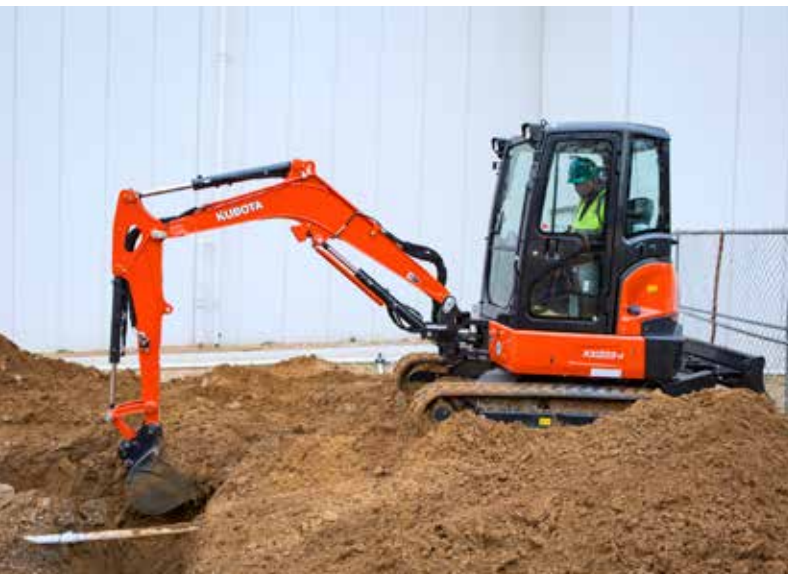
Enhanced reliability features on the 9A series compact excavators include bushings designed for long-life lube intervals, wear-resistant and noise-reducing polymer shims, and integrated preheating systems, which extend service intervals and reduce machine downtime. Serviceability enhancements include wide-opening engine hoods, centralized grease fittings and easy change plastic air cleaners.

Meet the John Deere 30G

John Deere continues to upgrade its G-Series excavator line with the introduction of the 30G compact excavator, filling a gap for customers looking for a solution in the 3t to 4t class. This new model will offer numerous performance features, such as increased lift capacity and improved breakout forces. The 30G will also incorporate all current G-Series features, including the standard pattern changer and standard hand-controlled proportional auxiliary hydraulics.

The 30G is an updated model to the 27D with similar, albeit improved operation specifications and features. Along with a 2,774mm dig depth, they include a 22% increase in bucket force, an 11% increase in arm force, and a 17% increase in net engine horsepower.

The 30G is equipped with all the standard G-Series features, including mechanical pattern changers, quick couplers and proportional auxiliary hydraulics plumbed





TM

ARIX Generation 3

Advanced multi-layered diamond segments
with precise distribution of diamond particles

THREE GENERATIONS BEYOND

TURN YOUR DREAMS INTO REALITY

Meet the third innovation of the original
diamond array technology that changed
the industry in 2005. ARIX G3, superior
performance you can see and feel.



SHINHAN DIAMOND

36B-10L Namdong Industrial Complex, 610-9, Namchon-dong, Namdong-gu, Incheon, 405-100, Korea
TEL. +82.32.820.3801 | FAX. +82.32.810.3456 | E-mail. terry@shinhandia.co.kr



to the end of the boom. The new model features a redesigned cab with heat and air-conditioning in any climate. Within the operator station, a new seat with adjustable wrist rests for daylong comfort was added, and a suspension seat is standard. The foldable travel pedals provide efficient operation by maximizing foot room and providing low-effort pilot controls that deliver smooth performance.

Like other G-Series models, the 30G has several features for increased uptime. John Deere included a third service door for improved access to the cooling core and other daily checkpoints. The side-by-side cores are positioned to permit easier access. Extended fluid and lubrication intervals and sight gauges help keep maintenance to a minimum.

Bobcat launches new E17Z ZTS excavator

Bobcat has launched the 1.7t E17Z zero tail swing canopy model, completing the company's 1t-2t range of compact excavators.

In the new E17Z, the zero tail swing functionality is taken a level further using Bobcat's zero house swing design, in which the front upper structure is also protected by ensuring the front corners are kept within the swing circle when the tracks are in the fully expanded position. As a result, the zero house swing functionality provides 320° of free rotation.

The uncompromised operator environment on the E17Z in combination with excellent visibility provides unmatched operator comfort and safety. The E17Z is built around the operator, providing optimum ergonomics for operators of all sizes with easy access to the pedals and controls. The large canopy and access provide the driver with plenty of room to get into and out of the operator's seat. In addition, when not in use, the pedals can be folded away to increase room for the operator's feet.

The E17Z has a standard operating weight of 1,749kg, and a maximum digging depth of 2,249mm. Fast cycle times, combined with smooth control of breakout forces, provide maximum productivity. Boom and arm cylinder cushioning enhance the overall smoothness of the workgroup. The E17Z incorporates the architecture of the hydraulic system on the larger Bobcat E20 model with a combination of variable piston pumps and a gear pump.

With a transport weight of less than 1.65t, the E17Z is towable on trailers for 2,200kg of total weight. An automatic slew brake helps facilitate safe parking and transportation.

The control panel ensures all vital information is easily accessible by the operator. The E17Z also offers keyless ignition and a battery kill switch to help prevent battery drain when storing the machine as well providing an effective way to prevent theft.

The dump height on the E17Z allows it to load trucks easily, while the reach at ground level means the machine does not need to be repositioned as often when digging. When fully retracted, the undercarriage allows the excavator to go through narrow spaces; and when fully expanded, provides stability, especially when working over the side. Expansion and retraction is a simple process via an electric switch on the control panel.

Stability is achieved by fully expanding the retractable undercarriage and using the optional long dozer blade. As well as helping in dustpanning work, the dozer blade improves the front stability enabling the operator to use the full breakout forces. As standard, the E17Z has easy-to-operate blade extensions.

The E17Z is ideally suited to picking up and placing heavy items with safety. In addition it can be supplied with an optional object handling device, which consists of a boom load holding valve, arm load holding valve, hooking device, and overload warning device.

Also from Bobcat, new quick coupler for E25 to E55 excavators

Doosan Bobcat EMEA has extended its excavator quick coupler offering with the new hydraulic pin grabber coupler for attachments used on the seven Bobcat compact excavators from the E25 up to the E55 models. The new coupler is available as a factory-installed option, and as an aftermarket product for use with all the pin-on fitting attachments for the E25 to E55 excavators. The new quick coupler complements the existing full range of mechanical couplers from Bobcat, including Klac and Lehnhoff systems.

Key features and benefits include its triple lock design for greater safety, exceeding the ISO 13031 norm and complying with all safety standards in Europe and the UK. There is a wide variable pin centre, to pick up multiple pin-on attachments. A robust, compact design ensures maximum breakout force and the system is essentially maintenance free, with few components. Springs are activated in case of pressure loss to avoid any risk and reversibility is standard when the job requires.

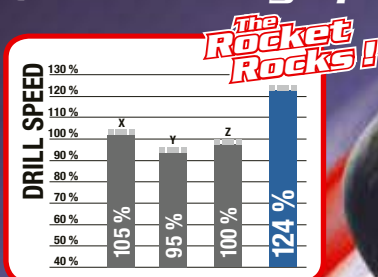
Important aspects include the increased safety and compliancy offered by a hydraulic pin grab coupler, which enables the operator to rapidly and safely change between non-hydraulic attachments from the comfort of the cab. The pins are under constant pressure from the hydraulic cylinder ensuring the attachment is tightly gripped, even when there has been pin wear. In the unlikely event of a hydraulic cylinder failure or hydraulic pressure loss, the attachment will remain securely connected thanks to two powerful springs. Front and rear locks ensure the attachment remains in position at all times. The operator can change non-hydraulic attachments without leaving the seat.

The proven and tested design has no greasing requirements and very few moving parts with no maintenance requirements, other than the daily inspection.

The Rocket Rocks !

*We are proud to introduce
the Ultimate Rocket* Drill line.*

- ***Up to 30 % faster***
(best drilling speed for core drilling tools)



- ***Competitive price***
- ***Made in Belgium***

Why "Rocket drill" ?
This nickname comes from one of our customers !
Try the Rocket, you will understand !

****Only by CARBODIAM***

CARBODIAM s.a.

Rue Général Mellier 27 B - 1495 Tilley - BELGIUM - +32 (0)71 870 640

Contact : sales@carbodiam.com



THE NEW ANNA FAMILY HIGH PERFORMANCE CUTTING FOR PROFESSIONALS

WEKA



For more information about our products and contact details of WEKA sales distributors, please visit our website.

www.weka-elektrowerkzeuge.de

Hard work or smart work?



INTRODUCING
BROKK 500



Successful demolition projects are about brainpower. About finding new, efficient ways of doing the work in order to increase profits and outsmart the competition. The new Brokk 500 is pushing the boundaries even further. With Brokk SmartPower™ – the intelligent electrical system that ensures better performance and higher availability, a new, more powerful breaker and even better serviceability, our latest brainchild will give you a distinct, competitive edge.

Intelligent Demolition Power

BROKK®

Brokk AB Skellefteå, Sweden | www.brokk.com



Doosan launches new DX10Z mini-excavator

Doosan's new DX10Z zero tail swing mini-excavator is compact and easy to transport with a width of 710mm when the tracks and the front blade are fully retracted, allowing the machine to pass through most doors. A foldable TOPS canopy meeting ISO 12117 requirements is standard.

The integral sliding blade extensions eliminate loose parts that require storage space and can be easily lost. The blade extensions can be slid into their inner position to reduce the overall width.

Thanks to the design of the undercarriage, the DX10Z provides excellent lifting capacities, combined with a maximum digging depth of 1.82m, and a machine weight of 1,176kg.

The position of the joystick controls can be adjusted to suit different operators. Both left and right consoles, which serve as armrests, need to be lowered and locked in order to operate the machine. Thanks to a standard second speed range, the DX10Z can move quickly and work faster and more efficiently.

The hydraulically expandable undercarriage provides the DX10Z with one of the widest stances in the mini-excavator segment. When it is extended, the width of the square footprint becomes 1.1m.

As a zero tail swing mini-excavator, the offset tail swing provides the operator with confidence to concentrate on the job at hand. The use of metal covers and a large cast counterweight provide corner protection and durability.

The workgroup of the DX10Z excavator features a cylinder-over-boom design, so that the cylinder cannot be damaged and the hoses for the auxiliary hydraulics are routed inside the boom.

Particular attention has been made to ensure easy service access. There is a single access point for daily maintenance, checking the fuel gauge and refuelling through the lockable cap.

The DX10Z is powered by a Kubota D722 engine with a claimed best in class cooling system. When the machine is frequently used with a hydraulic breaker, the demolition kit provides extra cooling so the breaker can be used continuously, even in warm environments. This is believed to be unique in the market, and makes this model ideal for indoor demolition projects.

Also from Doosan, the new DX17Z mini-excavator

The new 1.7t DX17Z mini-excavator from Doosan is ideal for rental and urban construction sites with limited space. The machine's ZHS design offers easy transportability and more functionality than a ZTS mini-excavator, as ZHS fully protects the front upper structure corners within the swing circle. As a result, ZHS functionality provides 320° of free rotation while working close to any object.

The stability of the Doosan DX17Z is enhanced by a retractable undercarriage that allows the excavator to go through narrow spaces. When fully expanded, undercarriage provides optimum stability, especially when working over the side. Expansion and retraction are simple and easy via an electric switch on the control panel.

An optional long dozer blade also significantly improves front stability, enabling the operator to make full use of the breakout forces the DX17Z can deliver.

The superior dumping height of the DX17Z makes loading trucks an easy process, while the reach at ground level means the operator does not have to reposition the excavator as often as other machines when digging.

Incorporating the architecture of a 2t class hydraulic system, with a combination of variable piston pumps and a gear pump, the DX17Z's unique hydraulic system makes the best possible use of the engine's power. Fast cycle times, combined with smooth control of class-leading breakout forces, provide maximum productivity. Boom and arm cylinder cushioning – also unique in this machine class – enhance the overall smoothness of the workgroup.

Comparing favourably with larger excavators, the DX17Z provides superior operator comfort for working hours at a time with protection, cover and excellent visibility provided by a large and spacious canopy; easy entry and exit; convenient space for the operator's feet with ergonomic fold-away pedals; a flat floor for easy cleaning; smooth joysticks; access to all controls and cup holders.

The control panel makes it easy for the operator to access all information: auto engine shutdown, auto glow plugs countdown, auto cab lights switch-off, audible alarm and engine speed. A battery kill switch helps



Volvo CE unveils 100% electric compact excavator prototype

Volvo Construction Equipment has unveiled the EX2, its latest concept machine to industry specialists, policymakers, media and academics at the Volvo Group Innovation Summit in May. Believed to be the world's first fully electric compact excavator prototype, the EX2 delivers zero emissions, 10 times higher efficiency, 10 times lower noise levels and reduced total cost of ownership compared to its conventional counterparts.

To make the EX2 prototype fully electric, the combustion engine has been replaced with two lithium ion batteries, totalling 38KWh, which store enough electrical energy to operate the machine for eight hours in an intense application, such as digging compact ground. The hydraulics has also been replaced with electrics, which incorporate electromechanical linear actuators that help to optimize the transmission chain. Removing the hydraulic system and the combustion engine, as well as reducing the cooling needs, has led to significantly lower noise levels. At this stage, the EX2 is purely a research project and there are currently no plans for industrialization.

The EX2 stemmed from the company's earlier ELEXC research project, which was partly financed by the French government, as well as various funding bodies in France. Volvo CE worked with a team of six partner companies which all contributed towards the €7M project. The ELEXC work started in 2012 and concluded in 2015, Volvo CE has since been working on other research projects connected to the EX2, such as durability tests.

"The electrification of construction equipment will produce cleaner, quieter and more efficient machines; this represents the future of our industry," said Volvo lead electrics and electronics systems engineer and EX2 project leader Ahcène Nedjimi. "The EX2 is a revolutionary machine. With its zero emissions and ten times lower noise levels, it could easily be used in densely populated areas without disturbing people, even at night. Ten times higher machine efficiency and maintenance-free systems mean that operating costs and total cost of ownership would be significantly reduced.

The prototype machine delivers the same power and force as its conventional counterpart, as well as faster speeds in combined movements. And all of this has been achieved without compromising on machine performance, ensuring customer needs would be fulfilled."

prevent battery drain when storing, and is an effective way to prevent theft. An automatic slew brake ensures safe parking and transportation.

The DX17Z has a standard operating weight of 1,749kg and a maximum digging depth of 2,249mm. The heavy steel gauge covers and tailgate provide durability and peace of mind while working. Features include two-piece blade cylinder hoses, wrenchless hydraulic hose technology to help prevent leakage, proven boom and dipper-stick design, protected top-mounted boom cylinder; oversized cylinders, a new paint and surface treatment process and extra residual value and a reinforced expandable undercarriage to maximize rigidity.

Thanks to the large steel tailgate and side cover, all components for daily maintenance are easy to access. Daily maintenance and service points are located for easy and immediate access. The side-by-side coolers are easy to clean. Simple diagnostics are used on the DX17Z, with error codes displayed on the control panel and service tool connection. The floor panels can also be removed rapidly for service purposes.

Caterpillar's new CAT 300.9D VPS mini-excavator

Caterpillar has added the model 300.9D versatile power system to the range of mini-hydraulic excavators. The design of the 300.9D VPS allows the machine, in conjunction with its separate hydraulic power unit, to work with its diesel engine or from a remote electrical power source, with no loss of performance. Having an electrical drive system remote from the machine enhances utilization and rental options. The 300.9D VPS can be used alone for regular applications, or with the hydraulic power unit when the job requires low noise and zero emission.

Wacker Neuson's new excavators

Wacker Neuson's latest generation of excavators offer cutting-edge performance in a very compact package. The machines are significantly stronger and have gained



some weight compared to the previous models while fitting in a smaller envelope. The ET65 and ET90 compact track excavators were designed with users' daily challenges as the focus.

The 6.5t ET65 offers a breakout force of 50.7kN, and a maximum digging depth of 4.2m with the long dipper stick. The ET65 is powered by a 35.8kW Tier 4 Final, turbo-charged Perkins engine.

The 9t ET90 is powered by a 55kW Tier 4 Final, turbo-charged Deutz engine. It has a breakout force of 70.4kN, and a maximum digging depth of 4.6m with a long dipperstick.

Both models' engines offer up to 20% fuel savings. The three-point bucket linkage along with the 200° expanded angle of rotation offers a claimed best-in-class breakout force. With this linkage system and optimum angle of rotation, the ET65 and ET90 provide more power for digging in tough conditions and can rotate further to keep the load more secure in the bucket before dumping.

With a lower centre of gravity and significantly reduced dimensions, the ET65 and ET90 can reach areas these size excavators could not reach before. The new design also has improved visibility of the unit and the work area. A low-profile engine compartment and larger windows allow the operator to have a view of both sides of the machine. The boom has been shifted to the right so the operator can easily see the entire boom and attachment, as well as the entire job.

The ET65 and ET90 have new cabs with standard air conditioning, cell phone charger and holder, air-cushioned seat and controls easy to use and read. Standard features include a hydraulic quick attachment making changes simple. A standard diverter valve on the auxiliary hydraulic line allows to switch between hydraulic thumb and a hydraulic breaker without disconnecting hoses.

New excavators from Gehl

The all-new Gehl M08, 0.8t excavator, provides a compact solution for rental fleets, utility contractors, and municipalities. Narrow enough to fit into small spaces, the M08 is available with a full-line of attachments including augers, breakers, buckets and compaction plates.

Also new is the Gehl M100, a 10t unit with a dig depth of 4.5m. The minimal-tail swing of the M100 will go 60° in either direction allowing the machine to remain in place for more consistent digging. This unit is also an alternative for application using a standard backhoe loader.





....WHO ELSE?

THE **INNOVATORS** IN SURFACE PREPARATION



STEEL BLASTING



FLOOR STRIPPING



SHOT BLASTING



DUST
COLLECTORS



SINGLE DISC
GRINDERS



TRIPLE DISC
GRINDERS



SCARIFYING





Metso's new shredders

The new M&J FineShred 1550 and 3550 shredders are based on Metso's long tradition of creating superior high-tech shredders. These new single shaft fine shredders with vertical feed by a pusher are for refuse derived fuel production.

The shredder handles a wide range of different materials and is suitable for refuse derived fuel production. It can deliver a throughput up to 17t/h, depending on the output size, and has a homogeneous output from 10mm to 100 mm.

"We saw a need in the market for single shaft fine-shredders with in-line feeding. These new shredders have an unbeatable price performance and delivers a super stable and homogeneous output which increases the value of RDF," said Metso Waste Recycling senior vice president Uffe Hansen.

The multi-edged shaft is fitted with a patented knife system and is fed by a pusher that ensures material is not forced onto the shaft, and a minimum of heat is generated. The hydraulic drive of the shaft reduces power peak on the grid and guarantees impact resistant and resonance-free power transmission.

"Our goal was to create a shredder with vertical feed at a competitive price without compromising on Metso's usual high quality. Its great force is that it can shred almost any material into very small scale and ensure a completely uniform result without crumbs," said Metso Waste Recycling Technology Development Manager Johannes Kjærsgaard.



Komatsu introduces **NEW DUMP TRUCKS**

Komatsu Europe International had introduced the HD325-8 and HD405-8 rigid dump trucks that combine increased engine power and the Komatsu traction control system. They feature payload capacities of 36.5t and 40t respectively and replace the HD325-7 and HD405-7 models.

Both trucks feature a 386kW, EU Stage IV certified Komatsu SAA6D140-7 engine. The optional Komatsu traction control system automatically applies the brakes independently to achieve optimum traction in varying ground conditions. Because the system operates without the need for differential lock-up, steering performance is not compromised.

"With the integration of the latest Komatsu engine technology, the new HD325-8 and HD405-8 are designed to offer a maximized productivity with a

low operational cost," said Komatsu Europe product manager Jeroen De Roeck. "The new spacious and ergonomic cab, with fully adjustable, heated and ventilated seat, provides a first-class, comfortable work environment."

The latest Komtrax telematics, and the Komatsu care maintenance programme, offer top fleet management and support, protect the machine against misuse and guarantee maximum efficiency and uptime.

Other new standard features include a 175mm LCD colour monitor, a dedicated rear view monitor, fast-fill fuel system and a heated and ventilated operator's seat with air suspension. Front access is improved with sloped stairs and handrails, in place of the previous ladder configuration.

www.komatsu.eu



PRINOTH upgrades the Panther T16

The tracked utility vehicle manufacturer Prinoth has upgraded its Panther T16 model, which has a carrying capacity of 15.2t. The T16, one of six in the range, is now available with new track and configuration options to suit varying customer needs. There is now a choice between metal embedded solid rubber tracks or the traditional D-dent track system.

The Panther T16 upgrade is in response to customers requesting the rubber track option, which has required a redesign of the crawler undercarriage that provides increased versatility when crossing or travelling on roads. The T16, which has a maximum travel speed of 13km/h, is also now available with dump box or flatbed options. The dump box has a capacity of 8.8m³ and is lined with Hardox steel.



A good day at work.

Everyone wants to have a good day at work. The first step to achieve this is to work with machines that last and that meets or exceeds the expectations. Day after day, year after year. It is also important that the machines in question are kind to your body, so you feel good even after the workday is over.

We manufacture and supply dust extractors, air cleaners and wet vacs of the highest quality. Our machines are designed with the users' well-being at the top of the list, protecting both your back and your lungs. The machines are, for example, ergonomically designed and lightweight. Dust extractors and air cleaners are equipped with H13-filter that takes care of the smallest and most dangerous particles. Our wet vacs are equipped with powerful evacuation pumps so you can pump away the liquid which is taken up.

Do you also want a better day at work? We have the solutions.

pullman-ermator.se





ATLAS COPCO

expands HiLight tower range

Atlas Copco has expanded its HiLight tower range with the launch of three new LED plug-and-light models. The P2+, V2+ and V3+, can be powered from an auxiliary power source, the grid or a portable generator.

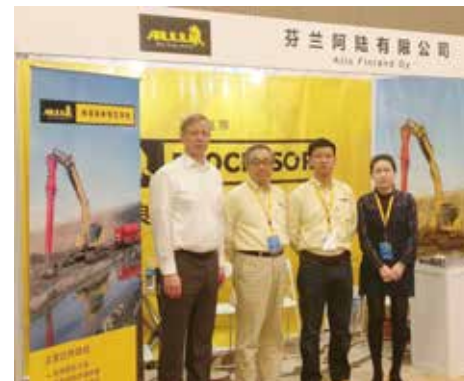
The HiLight P2+ floodlight provides 360° coverage across a 2,000m² illumination area. This is a much greater distance than traditional balloon style light towers. The 320W LED light source is housed in a weatherproof cylindrical polyethylene housing and weighs 45kg. The manually elevated vertical mast has a maximum operating height of 5.5m and is certified as being wind-stable up to 50km/h.

Designed for use in road works and construction site applications, the HiLight V2+ and V3+ are housed on a four-wheel trailer. Both models have a steel frame and are protected by polyethylene bumpers. The V2+ light tower has a 320W LED light source, covering

2,000m². The HiLight V3+ is equipped with four 120W LED lamps combined with directional glass optics capable of illuminating an area of up to 3,000m². Both the V2+ and V3+ have manually operated vertical masts that extend up to 5.5m and allow for 9° of rotation.

"Our new HiLight towers are designed to help workers experience a brighter, safer environment that will enhance their productivity," said Atlas Copco Portable Energy light solutions product marketing manager Felix Gomez. "What's more, the LED lamps experience no burn-out problems and have a life expectancy of 30,000h, which contributes to lower maintenance costs and longer service intervals."

When access to the grid is not possible and portable power supply is required, Atlas Copco recommends powering the light towers with Atlas Copco iP portable generators.



ALLU LAUNCHES new processor

The Finnish manufacturer Allu has added the Processor to its range of mass stabilization equipment. The Allu Processor is a power mixer attachment for fitting to conventional hydraulic excavators in the 25t to 40t weight class. It is capable of penetrating and effectively mixing a variety of difficult materials from clay, silt, peat, sludge and sediment, to dredged material and contaminated soil. Two Processor models are available, the 300HD, which has a working depth of 3m and the larger 500HD that can penetrate to 5m.


www.allu.net



Klindex launches Maxi Orbit

Klindex has added the Maxi Orbit multipurpose single brush suitable for treatments such as polishing, dewaxing, crystallization, light grinding on marble, concrete, stone, parquet, terracotta and stoneware. Maxi Orbit is also ideal for cleaning delicate surfaces, such as carpets and rugs.

The oscillating head adapts to all surfaces and allows it to work easily, even on uneven surfaces. The large number of accessories and the big wheels make working simple and efficient. Thanks to its high-frequency oscillation roto-orbital principle, Maxi Orbit has excellent stability and manoeuvrability making the crystallization operations with steel wool fast, easy and effortless.



ANTRAQUIP[®]

CORP

Experienced, Innovative & Reliable

HIGH PERFORMANCE, DELIVERED

CONCRETE GRINDER ATTACHMENTS



DIAMOND & CARBIDE DEMOLITION SAWS





Proudly Made in the USA

WWW.ANTRAQUIP.NET

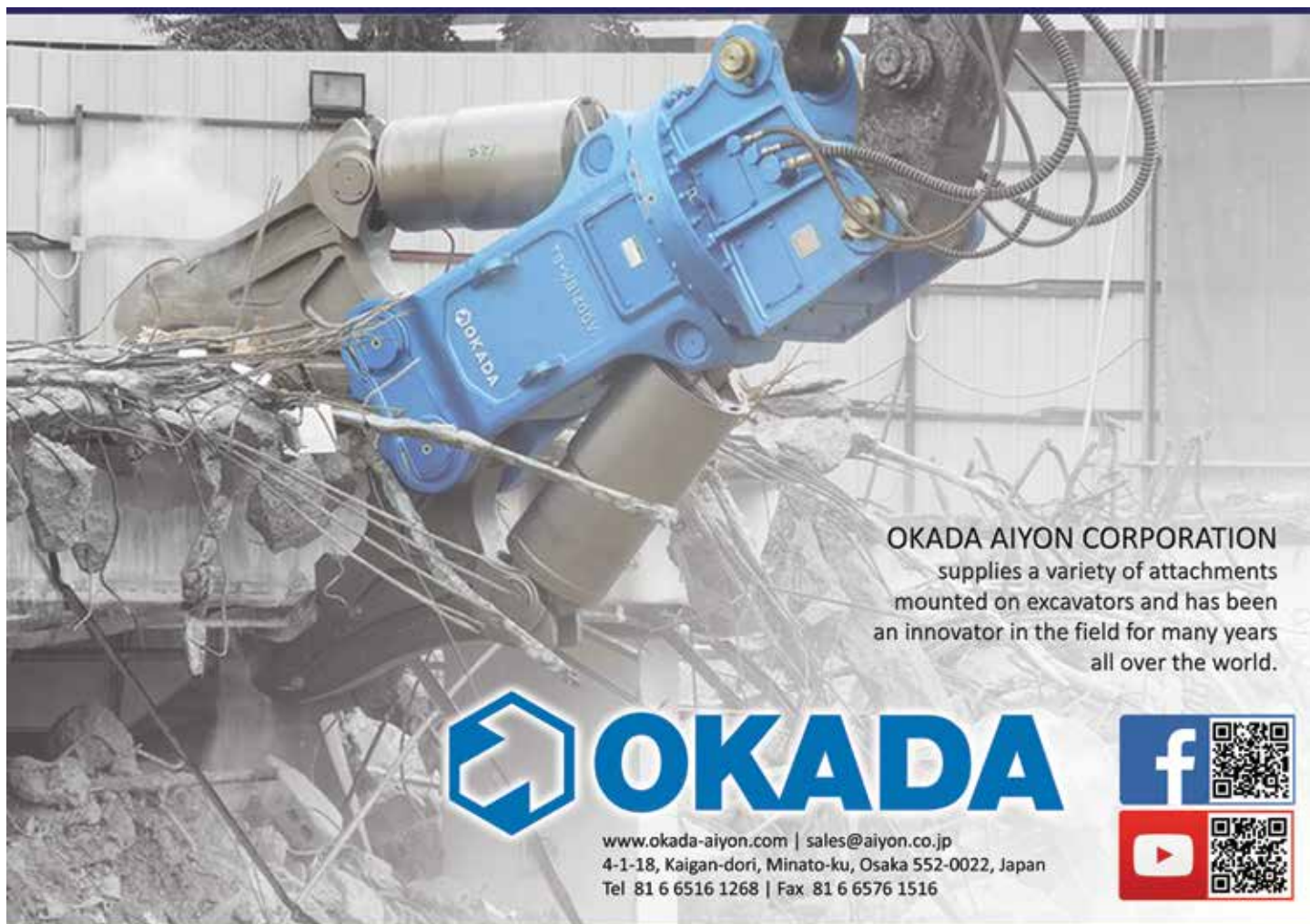


INFO@ANTRAQUIP.NET


TEL: +1 301.665.1165

THE ULTIMATE DEMOLITION CONTRACTOR'S ATTACHMENT

CONTROLLED DEMOLITION • REINFORCED CONCRETE CUTTING • MAKING THE AQ DEMOLITION SERIES THE ULTIMATE ATTACHMENT







OKADA AIYON CORPORATION
supplies a variety of attachments
mounted on excavators and has been
an innovator in the field for many years
all over the world.



OKADA

www.okada-aiyon.com | sales@aiyon.co.jp
4-1-18, Kaigan-dori, Minato-ku, Osaka 552-0022, Japan
Tel 81 6 6516 1268 | Fax 81 6 6576 1516

Wall and wire



The industry of wall and wire sawing machinery is well established, with the same cohort of players ruling the roost for decades. Being technology-intensive, it has high start-up costs preventing newcomers from entering the competition. Only very occasionally a novice emerges brave enough to challenge the established order. Fortunately, it still happens. Andrei Bushmarin reports.

Egun is on the roll

Egun System is a young Korean manufacturer whose innovative mobile systems for floor, wall and wire sawing jobs are getting increasingly recognized in the global market. The company was founded by Lee Sung Jun in 1990 originally as a concrete sawing and demolition contractor. Although a software engineer by training, he was always fascinated by heavy machinery.

Korea's concrete sawing industry was only just beginning in the 90s, and Hansan Development, as Egun was initially named, quickly secured a leading position in the market. Twenty years later, having accumulated a wealth of practical experience, the company started to develop its own floor, wall and wire sawing equipment. In 2014, it began to supply its machines outside Korea, initially to Cambodia. From that moment, the contractor turned manufacturer, kept expanding its global reach. Singapore,

Vietnam, Indonesia, the UK and New Zealand soon joined Cambodia on the list of Egun's overseas customers.

Having rebranded the company as Egun System in November 2016, it launched a full onslaught on the global market. Egun has an after sales centre in Singapore and now is preparing a similar operation in the US and the Netherlands.

Its wire sawing range includes seven diesel and electric powered track mounted models, with the eighth now in the pipeline. On the wall sawing side, the company currently offers two basic models. Another product is the multi-purpose system. This is a track-mounted machine capable of switching between wall, ring and wire sawing, core drilling and concrete breaking jobs which makes it a one-stop solution for a wide variety of demolition projects.

www.egunsystem.com

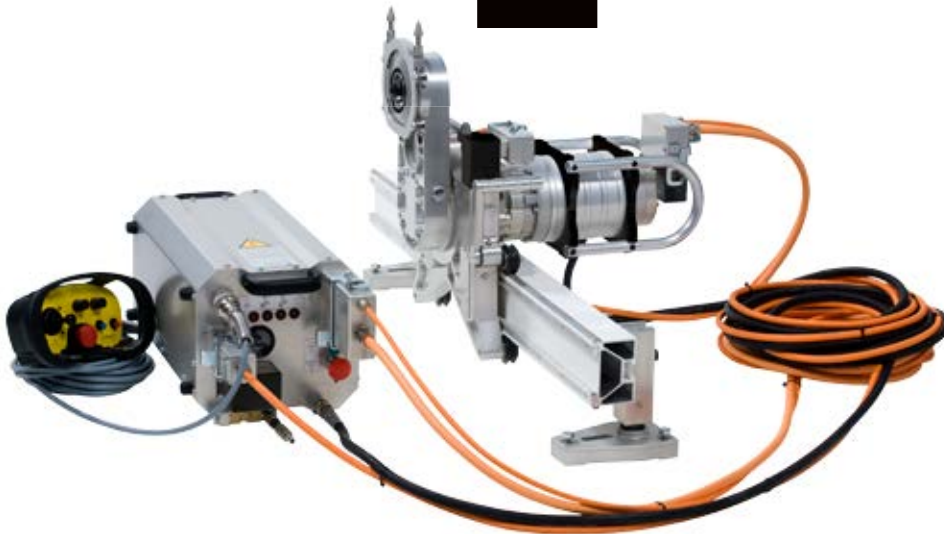
Hakken Consec extends wire sawing line-up

Hiroshima-based Hakken Consec has extended its wire sawing line with another compact hydraulic model. Powered by a 20kW pack, the new DSM-102A features a main motor, carriage and feed drive pulley mechanism, which is easy to dismantle for transportation. The mechanism is totally waterproof, which makes it easy to clean once the work is completed.

An electric torque converter integrated into the feeding system continuously adjusts the load on the diamond wire to extend its service life. The standard wire storage of 10.7m can be expanded by adding another pole on the left side. A dry wire sawing kit is also available.

www.consec.co.jp

saw puzzler



Hilti breaks new ground in wall sawing

Lichtenstein-based trendsetter Hilti has upped the ante once again by launching a wall saw that does not require a separate electric box. Having a maximum cutting depth of 720mm, the DST 20-CA boasts a 30% increase in cutting performance compared to the forerunning model DS TS20. With the remote control featuring a cutting depth indicator and the patented Cut Assist function, the system is easy to handle. Other features include ergonomic design, an integrated flush-cutting flange, a traction control system and a compact trolley for moving the system around sites. The DST 20-CA is fully compatible with the existing range of Hilti wall sawing accessories.

www.hilti.com

Durability is a byword at Tractive

The Swedish manufacturer of HF sawing and drilling

equipment Tractive has updated its Pentruder range with new features aimed at increasing longevity and durability. The slip clutch protecting the HF motor transmission has been strengthened with carbon-made friction discs. This solution reduces wear, extending service life of the slip clutch. The slip clutch is an important part of a wall sawing set-up that allows operators to continue working, even if the blade is jammed. All that is needed is to back out of the cut and continue sawing.

The blade flange's centre screw is now made of high-grade stainless steel to eliminate the risk of corrosion. All connectors are now sealed to protect the electronics. Thanks to the new design and manufacturing processes, the reliability of the saw's feed motors and the water fitting on the Pentapak has also been enhanced.

www.tractive.se

Husqvarna to launch new trolley for large-sized wall saws

Responding to customer requests, Husqvarna Construction Products is finalizing the serial production of a transport trolley for its WS 440 HF and WS 482 HF wall sawing systems. The new accessory is designed to carry the entire sawing system, including the new wall saw attachment WSC 40.

"We received many requests from contractors for a transport trolley that would help them move large wall saws and auxiliary tools around the job site," said Husqvarna global product manager Erik Edvardsson. "Based on those requests we developed the trolley whose weight with the entire wall sawing system, including the power pack and attachments, is 186kg in case of the WS 440 HF and 196kg for the WS 482 HF."

www.husqvarna.com



New Tyrolit DWL*** -CF DIAMOND WIRE

Tyrolit is launching a new sintered diamond wire DWL***-CF, for the cutting of light to medium reinforced concrete.

The new wire design provides for improved smooth running and enables precise cutting. The first-cut performance has also been optimised, resulting in more even wear of the individual beads and efficient cutting performance from the outset. Tyrolit recommends use of the DWL***-CF diamond wire for higher cutting speeds of 25m/s to 28m/s, in order to achieve the best performance and save valuable working time.

Tyrolit Premium*** wires are characterised by their versatile applications, consistent cutting performance and long service life. The research and development department places particular importance on the robust design of the tools and ensures that tool and machine form a perfectly harmonised system. Tyrolit offers customers worldwide a comprehensive range of diamond wires, to cover virtually all applications.

www.tyrolit.com

A Power Cutter from Guarda Systems

Guarda Systems from Australia has announced the worldwide launch of its Guarda FTR095 Power Cutter. It is equipped with a threaded muffler for attachment to the Guarda Fume Tube.

The Guarda Fume Tube makes cutting indoors or in enclosed spaces safe where exhaust fumes can create a hazard. The power cutter is suitable for general purpose concrete cutting. It is lightweight for ease of use and is suitable for 410mm blades and compliant with US emission standards.



When used with Guarda Fume Tube the power cutter must be used with a suitable wet vacuum system and water supply.

www.guardasystems.com

No fumes with Guarda Fume Tube

The Guarda Fume Tube is a patented fume extraction device that attaches to the muffler of combustion powered hand saws and enables cutting indoors and in enclosed spaces. Fume Tube attaches to the saw at the muffler and to a wet vacuum system at the other end. The vacuum is placed outside and up to 46m of extension hose can be run between the saw and the vacuum. The fumes and associated carbon monoxide are vented to the outside mitigating the risk of carbon monoxide poisoning.

The Fume Tube comes with a threaded muffler and is attached to the saw once and can be attached and detached as required. Water and air combine to cool the exhaust down the hose so the exhaust fumes do not melt it and the metal Fume Tube manifold runs cold to touch. Water is delivered to the saw blade as normal to dampen the silica dust and that same water is used to cool the fumes as they pass around the Fume Tube manifold and then down the vacuum hose. The recently launched Guarda FTR095 Powercutter comes with the threaded muffler already attached and is ready to take the Fume Tube, which can be connected and disconnected as required. The saw can be run with or without the Fume Tube depending on the cutting situation. This gives users the flexibility to purchase a saw that can take the Fume Tube without having to attach a new threaded muffler to existing saws.

The Guarda Fume Tube was developed because many professional concrete cutters prefer to use petrol powered handsaws instead of electric and hydraulic saws, but could not use these for cutting indoors or in enclosed spaces. The Guarda Fume Tube enables the retention of existing gas powered saws, but also for use indoors. As long as the saw and vacuum are set up and maintained properly and the vacuum is placed outside, carbon dioxide will be discharged to the outside of the building.

www.guardasystems.com

YOUR COMPLETE SOURCE FOR BREAKING ROCK.



PAVING BREAKERS



DEMOLITION TOOLS



ROCK DRILLING

Whether you need to break a sidewalk or the side of a mountain, we've got a durable, dependable solution for you. If you need tools for construction, mining, or demolition—we're the only name you need to know.

Call (800) 872-6899 or visit BrunnerLay.com

**Brunner
& Lay**

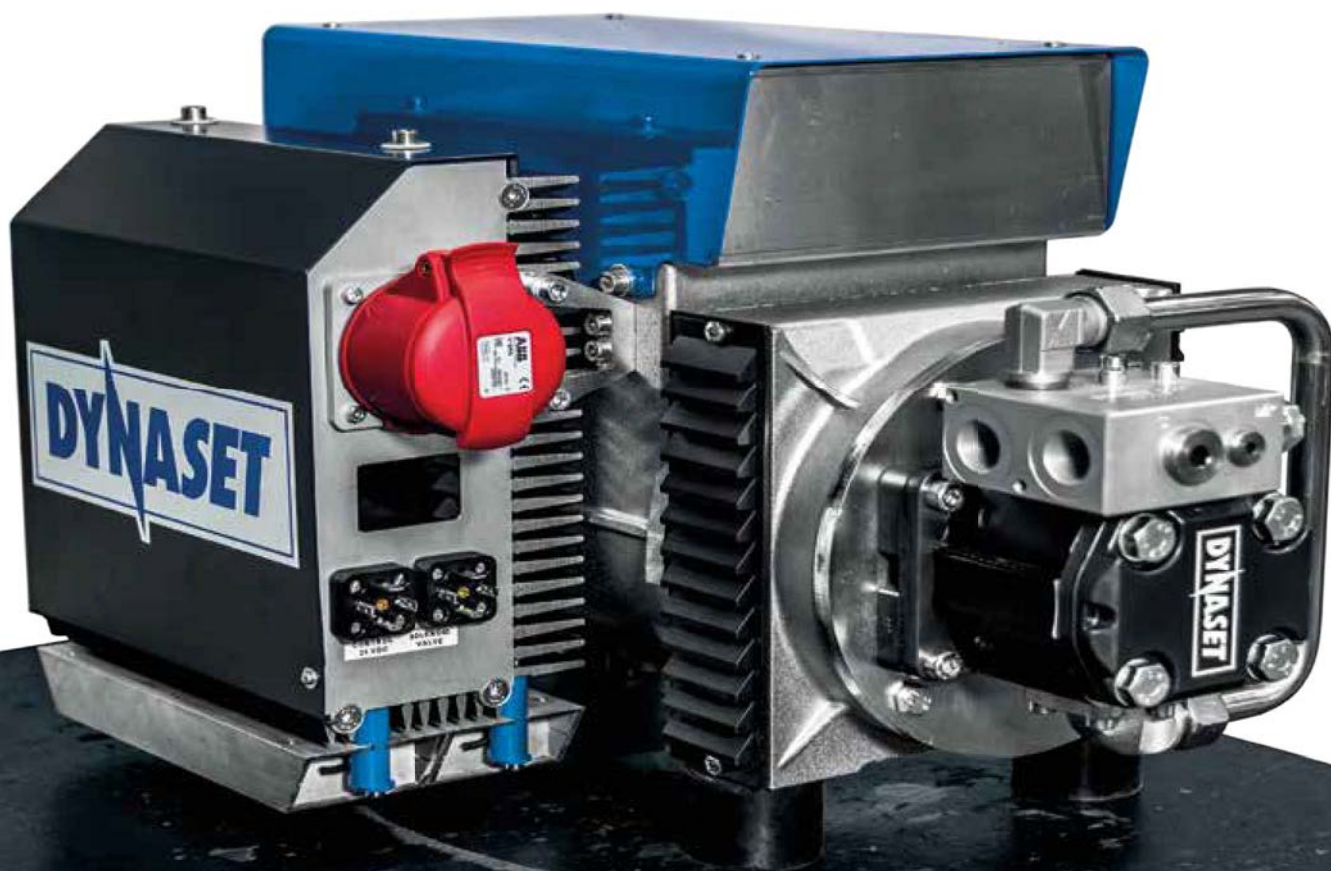
"Quality First" since 1882



HMG PRO HYDRAULIC MAGNET GENERATOR

POWERED BY HYDRAULICS

ENJOY THE SILENCE
THE NEW SILENT MOTORS ARE HERE



HYDRAULIC EQUIPMENT FOR MOBILE MACHINERY

GENERATORS
VARIABLE GENERATORS
WELDING GENERATORS
MAGNET GENERATORS
MAGNETS
INSTALLATION VALVES

POWER WASHERS
STREET WASHING UNITS
PIPE CLEANING UNITS
DUST SUPPRESSION
DRILLING FLUID PUMPS
FIRE FIGHTING SYSTEM

AIR COMPRESSORS
BIN WASHING SYSTEM
POWER BOOSTERS
POWER TAKE-OFF
VIBRAS
ETC.



DYNASET | www.dynaset.com | info@dynaset.com | tel. + 358 3 3488 200



EcoClear nominated for prize at CN Awards 2017

The EcoClear water treatment system from the Swedish hydrodemolition specialist Aquajet Systems has been nominated for a construction industry award in the category 'Commercial Innovation of the Year' at the annual CN Awards 2017 in the UK.

The EcoClear water treatment system is dedicated to filtering hydrodemolition water, through one compact unit. It enables the operator to safely discharge water back into the environment without the need of an extra water reservoir and without the use of filters of any kind, and without pollution. The system is powered by Siltbuster, a UK solutions provider for on site water

treatment, wet waste processing and the prevention of waterborne pollution.

"It's an honour just to be nominated. Whoever wins the award, the environment is the true winner. With EcoClear, Aquajet Systems and Siltbuster have shown the world that treatment of hydrodemolition water can be effortless, efficient and environmentally friendly. There's no system like it in the world. We'll keep our fingers crossed to win in July," said Aquajet Systems chief executive Roger Simonsson.

EcoClear is designed to work with Aquajet's hydrodemolition robots, and it's capable of handling a

flow rate up to 20m³/h. With EcoClear, the operator can neutralize elevated alkaline pH levels down to pH 6-9, while having full control of the turbidity level down to 20-25mg particles/litre. EcoClear uses flocculation technology to remove the maximum amount of sludge from the water. The whole process is easily monitored online and with the RECO control system is a useful tool for the operator. The control system also ensures that all discharged water has the correct levels. In addition, all data are logged, and can easily be exported to external storage units. Everything is displayed in real time in an intuitive graphic interface.



Kramer hosts Expert Days

The German manufacturer Kramer recently hosted two 'Expert Days' at its Pfullendorf plant, where several hundred visitors experienced static exhibits and witnessed demonstrations of the company's range of wheel loaders and telehandler machines in various applications. Guided tours of the plant proved very popular with the focus on the new 5055e, the world's first all-wheel-driven electric wheel loader in the 0.65m³ size class.

www.kramer.de



GENESIS GRAPPLE reduces maintenance

Genesis Attachments's new handling grapple, GHG 125, has features that require less maintenance. It has a single cylinder with dual drag links minimizing the number of moving parts, simplifying the hydraulic system and reducing maintenance. Easy to locate grease fittings in the tine, frame and linkage design also decrease downtime.

Designed for waste handling and recycling, construction and demolition material handling and sort-

ing, and primary demolition applications, the GHG 125 is available with perforated or heavy-duty ribbed tines that close at a flat angle to assist in compacting material. Maximum crushing force densifies material while the rotation system resists back-driving forces.

Large recessed side covers provide access to internal components while protecting the cover fasteners, and small openings in the lower housing prevent material from accumulating inside the grapple.

EGUN

Robot Floor Saw

Strong Power! Equipped with 140hp.
Caterpillar uneven floor efficiency.
Cutting depth up to 800mm.



G-90C

Smaller and stronger. New updated G-90C wires saw which is the representative Wire Saw of Korea. In the new updated style the powerful force remains unchanged, while the physical dimensions has become smaller and more convenient for operation.



Independent pulley. Can be attached/detached to all equipments.

Egun Robot floorsaw machine, 3 styles

- Cutting depth up to 500mm
- Cutting depth up to 800mm
- Cutting depth up to 1100mm

"Egun Style"
Made in Korea

EGUN

EGUN CO., LTD

egun@egunsystem.co.kr
Phone: +82.31.766.7391
www.egunsystem.com
www.egunsystem.co.kr



MADE IN GERMANY

**PREMIUM
DIAMOND TOOLS
& MACHINES**



KERN-DEUDIAM
Diamantwerkzeuge und Maschinen GmbH

Tel. +49 5257 507-0 Industriestraße 24
Fax +49 5257 507-40 33161 Hövelhof
info@kern-deudiam.de | kern-deudiam.de



GSSI Unveils StructureScan Pro

GSSI, believed to be the world's leading manufacturer of ground penetrating radar equipment, has introduced StructureScan Pro, a concrete scanning system that can accurately inspect concrete, measure slab thickness, and locate voids.

StructureScan Pro is claimed to be an ideal system for locating rebar, post-tensioned cables, and conduits, conduct real time surveys for core clearance or post process data for reports. It reaches depths up to 457mm. The system includes the updated SIR 4000 control unit and a choice of the 1600MHz or high-resolution 2600MHz antenna. With a basic antenna upgrade, the SIR 4000

controller can also be used for utility detection and deep void detection applications.

StructureScan Pro locates embedments in real-time, and allows users to create x-ray-like 3D images of a survey area. The intuitive data visualization features include the ability to slice through each data layer. Additional features include multiple colour themes and save image functionality.

The updated SIR 4000 also enables the option of on-the-fly automatic gain to enhance the data display, while still saving the file in the original raw format for post processing.



New Rockster Impact Crusher R1000S

Rockster has added the R1000S track-mounted impact crusher with more technical features than the R900. It includes refinements such as a new multifunctional colour display, an auto start and stop function, a stepless variable, fully hydraulic gap adjustment with integrated measuring system, as well as the automatic load-dependent, stepless regulation of the conveying speed and a new fixed hammer. Also the adjustable magnetic separator and screenbox and the swivelling catwalk make machine maintenance easier.

The vibrating pre-screen chute is resonating to stop deposits in the shaft. The vibrating discharge chute transports material on the main conveyor and prevents belt wear. The inlet width and the oversized rotor diameter of more than 1m guarantee the best throughput rates in different applications. The blow bar exchange is also

possible with a built-on hammer exchange device. The hammers are available in different quality levels. The optional screening system, consisting of the compact circular vibrating screen RS100 in combination with the patent protected double functional return belt RB92, is the perfect complement for the R1000S for creating 100% defined final grain.

Because of the compact transport measurements it is possible to transport the Rockster R1000S without any special authorization. It takes just 10min to unload the crusher and to put it into operation. If the transport includes the optional screening system the dismantling of the return belt and screen box is not necessary. It is also possible to transport the machine with screening system without a specifically required authorization.

www.rockster.at



KOBELCO'S smallest excavator

Kobelco Construction Machinery Europe has added its smallest excavator to the European market. The SK08, which has an operating weight of 1,035kg, is a super-compact mini excavator for working in confined areas, or assisting larger machines with the demolition of buildings from the inside.

The SK08's slim upper structure allows the machine to pass through doorways and enter narrow passages of just 700mm wide, with 730mm wide protecting structure removed. It is equipped with a crawler extension/retraction mechanism as standard and the crawlers can be further retracted to 680mm.

The SK08, which is powered by a 7.7kw engine, has a tail swing radius of 725mm and a maximum tail overhang of 305mm. The machine's boom swing, which provides a digging width of up to 310mm outside the left retracted crawler when the boom is swung 85° to the right, also enables the digging of side ditches close to walls. The working range includes 2.83m digging reach and 1.46m digging depth.

"The new SK08 is Kobelco's smallest mini excavator and its arrival opens up a whole new market for us," said KCME product marketing manager, Peter Stuijt. "Europe's infrastructure is developing rapidly and as a consequence, the demand for small yet high performance excavators has also increased over the past 12 months. This machine is therefore ideally placed for Europe's busy construction sector, including residential areas where there are space restrictions."

www.kobelco-europe.com

CTT 2017 demonstrates stability

CTT 2017, the 18th International Trade Fair for Construction Equipment and Technologies, recently staged at the Crocus Expo IEC in Moscow, Russia attracted 557 exhibitors and more than 20,000 visitors from 56 countries and regions. "Despite the still challenging economic situation, CTT once again confirms its leading role in Russia and the CIS," said Messe München managing director Stefan Rummel. "This show is not only a platform for product presentation, exploring product innovations and market trends, but also a good opportunity for industry communication and cooperation for further growth."



GO AHEAD, STAND BEHIND IT.



We do.

National Flooring Equipment sets the industry standard for mobility, adaptability, and durability. We have online training tools and on-demand customer service, so you know we have your back.

9250 Xylon Avenue North | Minneapolis, MN 55445 | nationalequipment.com
Main: 763.315.5300 | Toll Free: 800.245.0267 | Fax: 800.648.7124

**NATIONAL
FLOORING
EQUIPMENT**

Made in America Since 1968



The clock is ticking for compliance with the new US silica dust regulations. How are manufacturers helping contractors comply with the new rules? PDi editor in chief Jan Hermansson reports.

Now dust *SUCKS* EVEN MORE

Construction and silica dust has become a big issue in the US with the new Occupational Safety and Health Administration regulations that became law last year. With contractor compliance mandated by 23 September 2017, the US construction industry is in a completely new situation with silica dust. Long gone are the days when concrete cutting or demolition contractors could be exposed to dangerous levels of silica that can lead to serious health hazards in the form of cancer and respiratory issues. OSHA's changes to current regulations will decrease these risks.

New law decrease risks radically

Crystalline silica is naturally found in soil, sand, granite, and many other minerals used within the concrete industry. Millions of US workers in high-risk jobs are exposed to dangerous levels of silica that can lead to serious health hazards in the form of cancer and respiratory issues. OSHA's changes to current regulations will decrease these risks.

Workers' exposures are limited to a new permissible exposure limit of $50\mu\text{g}/\text{m}^3$ of respirable crystalline averaged over an 8-hour day. Action must be taken for any situation where the PEL is above $25\mu\text{g}/\text{m}^3$. Contractors must make provisions for measuring how much silica dust workers are exposed to, limiting workers' access to areas where silica exposures are high, using effective methods for reducing exposures, providing medical examination for workers with high silica exposures, and training for workers about silica hazards and limiting exposure.

Some countries in Europe predecessors

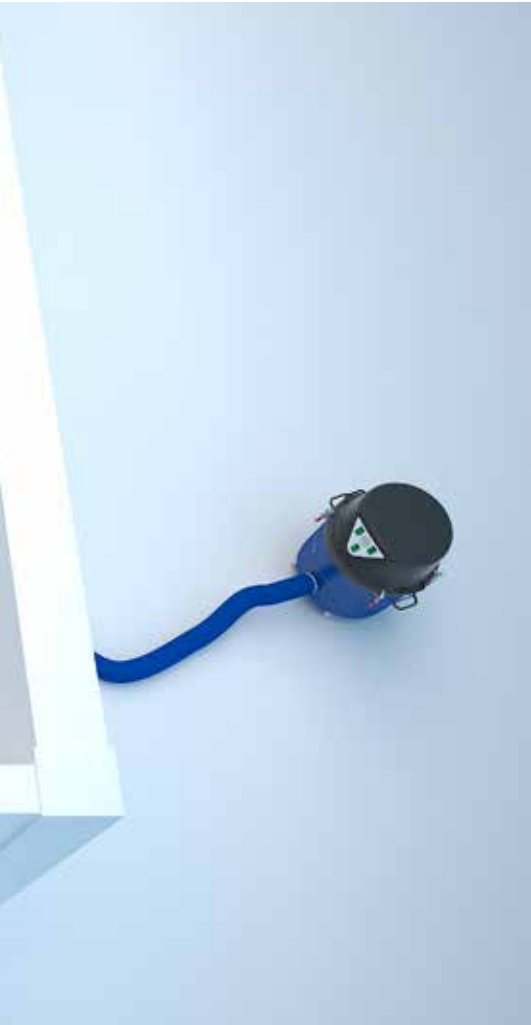
Some manufacturers of dust extraction and air cleaning equipment in Europe began developing and producing equipment that has complied with the new US law several years ago. This is because regulations in Sweden, Germany, and other countries have been quite sharp in the perspective of silica dust. Most of these manufacturers, especially Pullman Ermator and Dustcontrol, welcome the new regulations, as they have long been ready to offer their products to the US market as their product lines already comply. They have invested several years' of testing and development, and know that their products comply. On the other hand, manufacturers that need to adapt their products to the new regulation will experience a delay, as the switch to comply with the new regulations will not happen overnight.

Pullman Ermator and Husqvarna

Husqvarna has acquired Pullman Ermator and most of Pullman Ermator's professional assortments now can be bought under orange flag. The launch took place at World of Concrete in January. The Pullman Ermator brand will, with models such as the recently released A4000 air purifier. With a capacity of $4,000\text{m}^3/\text{h}$ it can handle workspaces up to 250m^2 .

The machine has a central exhaust at the back where the drain hose can be connected. It is equipped with disposable pre-filter and four H13 filters. The HEPA filter is the same as for A1000. The filter frame is fitted with hinges and buckles to make filter changes simple and fast. It is also easy to move when equipped with lockable non-marking wheels.





It is equipped with a warning light when it is time to change the filter.

The Pullman Ermator range includes two sizes of cleaning cabinet, CC800 and CC1600. Cleaners are designed to allow the user to clean tools and machines without exposure to harmful dust. With a large door, it is easy to set up the tools in the cabinet. The cabinets have large windows, inside lights, and smooth gloves to simplify cleaning. A car starter can also be added if necessary.

www.pullman-ermator.se

Scanmaskin Sweden

Scanmaskin has announced the worldwide introduction of two industrial dust collectors, the Scandust 8000 and Scandust 3600. The two units provide reliability and high performance, and are a major addition to the Scanmaskin product line. "Our focus has been to increase the number of working hours without interruption with a sustained level of reliability," said Scanmaskin product manager Martin Persson.

The new additions to the ScanDust series are very functional vacuums, with focus on ergonomics and usability. The ScanDust 8000 and ScanDust 3600 are safe and easy to operate.

The machines are equipped with Hepa-filters that collect harmful silica particles and filter indicators advise when they need to be cleaned using



the jet-pulse cleaning system. The ScanDust 8000 and Scandust 3600 are equipped with a polyester-grade coarse filter package that provides a high degree of material separation and increases the service life. In addition, the design and filter area have been designed to provide the most suction capacity.

These models are made of steel and feature solid non-marking wheels that will never go flat. In addition, both models include locking front wheels that provide an extra safeguard during transportation or when using on uneven surfaces.

Both models take advantage of the Longopac bagging system, which makes managing dust easy and efficient. The Longopac system comes with 20m of folded plastic bag, providing about 25 dust free changes.

www.scanmaskin.com



Scanmaskin Sweden AB to invest in new industrial Dust Collectors to meet the market demand

Scanmaskin introduces two new Industrial dust collectors, the Scandust 8000 and ScanDust 3600. These two units provide reliability and high performance, and will be a great addition to the Scanmaskin product line.

"Our focus has been to increase the number of working hours without interruptions with a sustained level of reliability", says Martin Persson, Product Manager at Scanmaskin Sweden AB.

The new additions to the ScanDust series are two very functional vacuums, with a lot of focus dedicated to ergonomics and usability. The ScanDust 8000 and ScanDust 3600 are safe for the operator and easy to operate.

"The machines are equipped with Hepa-filters that take care of harmful silica particles. To make it easier, the vacuum cleaners are equipped with a filter indicator that informs the user that it is time to clean the filter. To keep the filters as clean as possible we use the Jet-Pulse cleaning system. The ScanDust 8000 & Scandust 3600 are equipped with a polyester-grade coarse filter package that provides a high degree of material separation, which increases the service life. In addition, the design and filter area of these new models in the ScanDust series are designed to provide the most suction capacity."

These models are completely constructed of steel and feature solid non-marking wheels that will never go flat. In addition, both models include locking front wheels which provide an extra safeguard during transportation or when using on uneven surfaces.

"Both models take advantage of the Longopac bagging system, which makes managing dust very easy and efficient. With the Longopac system you will get 20m/60ft of folded plastic bag which provides about 25 dust free changes."

Both the ScanDust 8000 & ScanDust 3600 launches worldwide throughout June 2017.

Dustcontrol

Dustcontrol has a wide product range that encompasses many industries. On the construction side, the range is extensive and includes more than 20 basic models of pre-separators, dust handlers, air cleaners, and wet vacuums.

At the DEMCON show last autumn, a number of products were shown, including the latest series called Tromb. Currently the Tromb range consists of three models: DC Tromb 400a, DC Tromb 400c, and DC Tromb 400L. Tromb maximizes the power of the air to its advantage. The airflow is 400m³/h and has capacity for 500mm floor grinding machines.

DC Tromb 400 can be used for all types of foundry dust such as plaster, asbestos, wood, concrete and filler dust. Tromb is understood to have an H13 filter that meets the requirements for asbestos removal. The operator decides when the filter is to be cleaned automatically during operation or after completion of work.

Dustcontrol has also created a mobile-adapted website that makes it easier and faster to find information about the company's products and accessories.

www.dustcontrol.com

Ronda

Danish manufacturer Brøndum with its Ronda range has expanded with the new Ronda 2800H heavy vacuum cleaners. The model was launched at Bauma last year.



The new vacuum cleaner comes with a Longopac collection system, with a 40litre container for concrete dust, a 65litre container for light dust, and a combination of Longopac bags in a container. An optional flap valve assembly over the collection system provides virtually dust free draining, when necessary. It is possible to configure the machine for emptying during operation. If large amounts of fine concrete dust are collected, it will be possible for an operator to empty the vacuum cleaner while another operator continues to work with a floor grinder.

The Ronda 2800H has been designed to handle large amounts of fine dust, and is equipped with the multi-pipe filter system used in other Ronda machines. At the same time, the filter load will be reduced by the cyclone effect. The machine is also equipped with Ronda filter cleaning system.

The machine has three Green Tech motors, which can be connected separately and available for 230V and 380V. It has been designed for the construction industry and has a metal frame and is equipped with large wheels, which makes the machine suitable for tough treatment and transport between and at workplaces.

Blastrac

The new Blastrac dust collectors are equipped with a high-efficiency particulate air filter, ensuring a 99.995% exhaustion for particles greater than 0.18µm for total safety when used on hazardous substances. Blastrac has developed a complete set of dust separators equipped with HEPA filters, designed for clean-up, remediation, asbestos, and lead staining. In addition, Blastrac also has a Longopac system available that throws all dust particles straight into a sack system.

The new dust detector line is completely HEPA certified. In order to be even more efficient and secure, Blastrac has also developed split versions, consisting of three devices, filters and security filter assembly and collection, both equipped with HEPA filters and suction devices.

The engine is out of the contaminated area. The safety filter unit is used to make the connection between



iPulse vacuum from Starmix

Electrostar from Germany is a well known dust extractor manufacturer founded in Stuttgart in 1921 by Robert Schöttle. Electrostar produces the Starmix brand and is launching the ISP iPulse ARM-1635 EWA, a vacuum cleaner for tough and continuous use. It can be used for vacuuming directly at the electric power tool. A highly intelligent electronics measures the current state of the filter. Once the factory preset vacuum value is reached, both of the filters are alternately cleaned within



3.5s using high performance electromagnets, without interrupting work.

www.starmix.de

www.blastrac.com

Ruwac

All Ruwac vacuum cleaners recommended for silica dust removal comply with the latest OSHA standards for worker safety while featuring industry-leading filtration innovative technology that can be tailored to suit your individual needs. These vacuums are ideal for use with vacuum-assist tools.

Ruwac vacuums meet OSHA's requirement for handheld grinders. The MicroClean filter is compliant with OSHA's silica dust standards at 99.9% efficient at 0.5 microns, preventing filter clogs and cutting down on costly filter replacements. A manual filter cleaning



mechanism keeps the filters clean in between processes, while foot-actuated dustpans or direct bagging collection systems allow for easy, dust-free emptying, and reducing user exposure to contaminants.

www.ruwac.com

LAG – Dust binding machine ESM150

The Austrian manufacturer IAG is producing water mist canons and is launching a new water mist canon ESM 150. This is a dust-binding machine that can be used wherever large-scale dust emissions occur. The atomizing nozzles are tailored in line with specific requirements, depending on the type and size of the dust particles, in order to bind the various types of dust most effectively. The blower in combination with the special nozzle pattern enables a water output of 20litres/min to 400litres/min to be sprayed at a distance of about 50m.

With its modular design, the ESM 150 can be combined with other equipment in a variety of ways. Customers can select from a wide range of options depending on requirements, from a straightforward standard machine with manual control to a fully automatic version. If required, the company can provide entire emission prevention systems consisting of several dust binding machines with a centralized control unit.

www.iag.at



ECOMONDO

THE GREEN TECHNOLOGIES EXPO

GREEN & CIRCULAR ECONOMY

7TH-10TH
NOVEMBER
2017
RIMINI ITALY

21ST INTERNATIONAL TRADE FAIR
OF MATERIAL & ENERGY RECOVERY
AND SUSTAINABLE DEVELOPMENT

www.ecomondo.com

CONTEMPORARY WITH

KEY ENERGY

www.keyenergy.it

ORGANIZED BY

ITALIAN EXHIBITION GROUP

A merger of
Rimini Fiera and Fiera di Vicenza





Oxysan

Oxysan is a relatively new method of ionization technology to ensure that dust particles cling to the ground and are easy to sweep or remove. Oxysan is manufactured by Mpirum and sold only in Sweden, but there are plans for exporting in the near future. Now Mpirum has launched an upgrade of the well-known Oxysan series called Jonex. The Jonex ionization series contains three models, Jonex 1000+, 2000+ and 4000+.

www.midhage.se

Sila soon in the international game

Another Swedish manufacturer of professional air cleaners that does not export its products is Sila. The company started the production of air purifiers around 2012. Sila has four sizes of air purifier, SilaA600A2, Sila1000A2, Sila2000A2 and Sila5000A2.

Recent new addition is a device to replace coarse filters during work available. The feature is available on SilaA600A2, Sila1000A2, and Sila2000A2. A popular accessory to Sila's products is the remediation frame that makes work a lot easier on renovation sites where a negative pressure is required to minimize the dust.

The Sila 600A2 was selected as the best air cleaner in the Swedish newspaper The Construction Worker's major air cleaner test earlier this year.

www.silaproducts.se



WORX+

The Australian company WORX+ has released a new dust extractor Airworx+ 55T for heavy industrial work. The three phase motor has a power of 5.5kW with a current of 15A. It weighs 260kg and has a maximum airflow of 650m³/h and vacuuming effect of 300mbar. The unit has a suction inlet of 75mm diameter and the primary filtration surface area is 2.25m² and the micro filter surface area is 6.5m².

The unit has been developed for the elimination of hazardous airborne dust in concrete grinding and polishing applications. It is ideal for industrial applications where high suction efficiency is required. Some of the most important features are a frequency-controlled vacuum pump that offers 40% more airflow than standard machines on regular power supply. It has a variable suction control, which can be used for hand grinders through to large floor grinding machines. There is a power outlet for a grinding machine. It is equipped with a generator friendly soft start and sophisticated

electronic motor protection. The unit also has automatic direction correction and is integrated with a WORX+ Silencer.

It has a time saving radio controlled on/off and a two stage filter sock and micro filter particle filtration with a bag-disposal system for containment of messy and hazardous substances. It has washable polyester filters.

The unit has puncture proof wheels and good ground clearance and can fit through standard doors. In the rear there are bull horns for transportation of power leads and vacuum hoses and the machine folds forward for easy transportation.

www.totallyworks.com

MB Dustcontrol

Other devices that dampen dust efficiently are the popular dust suppression units that emit water mist. At the recent DDR Expo held in Brussels and organized by the European Demolition Association, Dutch manufacturer MB Dustcontrol launched a new dust suppression cannon, Spraycannon 50. The model is available in two versions, with atomizer or nozzle ring and has a spraying distance of 50m. The water consumption is up to 4,500litres/h for the atomizer or up to 3,000 litres/h with the nozzle.



It has a horizontal oscillation up to 359° and weighs 450kg and 480kg respectively. The tilting angel is -15° to 60°. Options are remote control, wheel set, weather station, mast or with disinfection system.

www.spraycannon.com

Savic Jetstream

The Belgian manufacturer Savic Jetstream, also an exhibitor at DDR Expo, introduced their new 230V electric driven dust suppression cannon. It is ideal for small and confined areas and easy and fast to set up.

www.spraystream.com



Best performances combined with modern solutions

The Austrian company Rockster Recycler GmbH shows the future perspectives in crushing and screening technology at this year's SteinExpo (open-air area, booth C21).

"Innovative technologies presented in a compact and modern design", as documented in the company's philosophy, are demonstrated in practice on-site. Starting with concrete demolition material and leading to 6 different defined final fractions. The heart of the presentation is the recently developed mobile track mounted impact crusher R1000S. With the patent protected double functional return belt and the DUPLEX-system*, which allows a wider range of application by interchange of the crusher units the R1000S represents the future of professional crushing technology.

The versatile setting options ensure excellent final grain quality. The double deck pre-screen with a screen mesh produces an additional defined final fraction.

The hydraulic vertically adjustable magnetic separator, the hydraulically lowerable screenbox and the swiveling catwalk make the maintenance of the machine easier. The up-and-over lift system of the side and back doors ensures even greater free moving space and saves additionally space.

With the increased operating and safety comfort, a new developed multifunctional color display, an auto start and stop function, a stepless variable, fully hydraulic gap adjustment with integrated measuring system as well as the automatic load-dependent, stepless regulation of the conveying speed and a new fixed hammer the R1000S provides a versatile application for recycling and crushing of concrete, demolition debris, asphalt und virgin stone.

Because of the compact transport measurements –

length 10,1 m/33.2 ft, width 2,55 m/8.4 ft and height 3,2 m/10.5 ft – and the weight of 30,4 tons/67,000 lbs, it is possible to transport the Rockster R1000S without any special authorization.

It takes just 10 minutes to unload the impact crusher and to put it into operation. If the transport includes the optional screening system the dismantling of the return belt and screen box is not necessary. It is also possible to transport the machine with screening system without a specifically required authorization because of the transport measurements – length 14,0 m/46.0 ft, width 2.83 m/9.3 ft and 3.2 m/10.5 ft height.

The mobile track mounted 3-deck screening plant RTS514, which is an example for the 2016 revised screen range, is also available for presentation on the fair. The machine guarantees maximum mobility for optimal dimensions with high performance.

This cost-effective solution provides a perfect screening result. The low weight - despite robust construction - and compact transport measurements, as well as the low feeding height and a rapid set up time, have many advantages in use.

As another exhibit, Rockster Recycler GmbH will present the mobile track mounted impact crusher R1100S. With its inlet opening of 1100 mm it is one of the most powerful mobile impact crushers. With transport measurements (incl. the optional screening system RS114 and the return belt RB95) - length 15,7 m/51.6 ft, width 2,99 m/9.9 ft and height 3,2 m/10.5 ft - and the weight of 37,1 tons/81,800 lbs, the Rockster R1100S can be transported without a specifically required authorization.



DUTCH QUALITY TAKES YOUR PROJECTS TO THE NEXT LEVEL

High quality diamond tools by Diacom, manufacturer of diamond-segments, -corebits, -blades, coredrilling rigs and wiresaw machines. Produced with care and made with the best materials, combined with excellent service.



www.diacom.nl

Diacom Trading B.V.
 Bijlmermeerstraat 72
 2131 HH - Hoofddorp
 The Netherlands

t. +31(0)23 561 52 75
 f. +31(0)23 561 52 73
 e. info@diacom.nl





PLANTWORX 2017

Plantworx is the UK's largest working construction equipment exhibition. The latest show, organised by the Construction Equipment Association, was staged in June at the Bruntingthorpe Proving Ground, Leicestershire. Roger Murrow reports.

Despite the combination of torrential rain, mud and blistering heat, over 17,000 visitors attended and saw 386 exhibitors display and demonstrate their latest equipment. Plantworx Innovation Award winners were also announced, including The People's Choice Award, where visitors voted for their favourite product, machine or service. The winning products were presented in video format.

Demolition solutions

Although Plantworx is a general construction equipment exhibition, many manufacturers and distributors

of demolition equipment launched new products and services. These included breakers, crushers, screens diamond drilling and much more. Plantworx can also now be considered an important date in the UK, and pan-European demolition calendar.

Buckets, grabs, attachments and coupling systems

Buckets and attachments were on display from many of the manufacturers, including Remu, MB and Allu. Arden Equipment launched its Arden jet system and showed its range of demolition and recycling attach-

ments that included clamshells, multi-tine scrap grabs, sorting grabs, scrap shears, pulveriser breakers and multi processors.

BPH Attachments launched a new range of demolition shears for excavators in the 3t to 280t class. The Prodem PDS series has an upper jaw protection system that reduces maintenance and build up on the upper jaw. Dromone, the Irish manufacturer, exhibited Pick-Up hitch and excavator quick coupler technology.

ECY Haulmark concentrated on its demolition and recycling attachments from VTN Europe. The company also displayed the LaBounty range of MSD scrap shears and pulverisers. A working demonstration featured a Kiesel KLS400 T.A.B. fitted with the OilQuick automatic quick coupler system.

Hill Engineering displayed its new Tefra Tilt Hitch, the award winning Tefra Coupler, Hill Titan buckets and the Hill Titan Thumb. The Hill Titan Thumb adds versatility to an excavator and is suitable for a variety of material handling applications. Kinshofer exhibited



a range of attachments for loader cranes and hydraulic excavators encompassing the Auger Torque, Demarec and RF brands.

Italy was represented with Cangini Benne displaying and demonstrating its attachment tools for host machines weighing from 0.6t to 14t. SOCOMEC, along with its UK distributor Bossi Plant Sales, also exhibited and demonstrated many of its hydraulic breaker and ripper attachments for excavators.

Simex likewise showed its earthmoving attachments for compaction, crushing, milling, and tunnelling. The company also demonstrated its new range of screening buckets. Pladder UK highlighted the attributes of its sorting demolition grab along with hydraulic scrap/metal shears, rotating and fixed hydraulic pulverisers, ripper teeth, hydraulic breakers and compactor plates.

Breakers and hammers

There were many breaker manufacturers represented at Plantworx, including Arrowhead Rockdrill, which





launched its new R range of hydraulic hammers. These are based on a patented design that eliminates the need for tie rods in the hammer assembly and simplifies construction.

Atlas Copco's showed its new RTEX handheld pneumatic breaker range. This is claimed to offer huge savings as it reduces energy consumption by 50% whilst achieving high breaking efficiency. The breaker has been shortlisted for the Executive Hire Show's Innovation Trail. BPH also exhibited a range of its breakers.

Brokk introduced to the UK its new Brokk 500 demolition robot, which features the Brokk SmartPower electrical system, a more powerful breaker with extended reach. "The Brokk 500 is a remarkable demonstration of how far we have come in getting the most demolition power possible out of a Brokk machine without adding to its size, largely thanks to our new Brokk SmartPower system," said Brokk Group chief executive Martin Krupicka.

ECY Haulmark exhibited a range of Furukawa hydraulic breakers. This included the latest in the FX range of small breakers through to the FXJ range for heavy demolition and quarrying applications. Husqvarna Construction Products showed its DXR demolition robots, and a dust reduction system used with Atlas Copco breakers and Brokk robots.

Mobile mini crushing and screening

New mini crushers and screens, ideal of demolition in inner city sites, were on display. Powerscreen Ireland was represented under its TrommALL brand, with a sorting screen on show. Herbst and Seba had impressive stands, with extensive ranges of crushing and screening equipment on display. ECY Haulmark's focus on crushing was provided by the Rubblemaster RM70Go! 2.0 compact tracked impact crusher, with the model on display having been bought by Tyne Tees Demolition.

Perhaps the largest range was exhibited by Red Rhino Crushers, who were also the Environment Award winners at the Plantworx 2017 Awards for Innovation. The company now manufactures mini crushers and screens ranging in size from 500kg to 10t. Launched at Plantworx was its new three-way split screen, which provides a compact solution for material processing.

Compressors, pumps and hoses and hydraulics

Atlas Copco launched its 8 Series of 10 portable air compressors, which can be towed behind a car without a special license. Reliability, efficiency and higher utilization levels, coupled with superior performance, maximize the return on investment the range offers to both rental and construction partners. There were 18

new additions added to Atlas Copco's open frame diesel-driven centrifugal dewatering pump range. The pumps focus on high fuel efficiency and cover a wide spectrum of sizes.

Dynaset concentrated on its hydraulic generators, power washers and compressors. The hydraulic equipment has been designed to convert the mobile machine's hydraulic power into electricity, high-pressure water, compressed air, magnet and vibration. CEJN UK manufactures ultra-high-pressure hose assemblies with exhibited equipment covering 700bar to 3,000bar.

Loaders and excavators

Doosan, JCB, Komatsu and many other manufacturers were all represented with equipment for a variety of applications. Avant Techno UK showcased its battery-powered, zero emission loader. This new e-series is in the same size class as the Avant 500 series, offering zero emissions, extremely low noise and minimal running costs. "The new e-series are truly green machines, enabling up to an hour of heavy duty application, which is extremely useful in demolition and construction when CO2 emissions are a problem," said Avant UK managing director Raimo Ala-Korpi.

Volvo Construction Equipment concentrated on its range of utility equipment including the EC15D,



DEMCON

2018

September 27-28, 2018
InfraCity, Stockholm

**With the Swedish Demolition Award 2018.
Look out for the registration documents.**



**Det Svenska
Demoleringspriset**



www.demcon.se



EC18D, ECR25D, ECR50D, ECR35D, EW60E, ECR88D compact excavators, DD25B roller plus the 14t excavator EC140E and an FH16 from Volvo Trucks. The new Volvo EC27D was shown for the first time in Europe whilst on the demonstration area the ECR25D and EW60E were put through their paces.

Wacker Neuson showcased its WL20e electric wheel loader, which was highly commended in the Environmental Innovation category of the Plantworx Innovation Awards 2017. Also on display was ET90 tracked excavator.

Diamond drilling, drilling tools and saws

Husqvarna Construction Products demonstrated its high frequency PRIME equipment and wall saws, large floor saws, as well as launching a new wall saw chain attachment, which converts its wall saw to a chain saw.

Tyrolit displayed and demonstrated its new range of hydraulic and Hi Frequency wall saws and wire saws together with floor saws and drilling equipment.

Diaquip focused on its in diamond drilling and cutting equipment, with a portfolio of products manufactured in the UK. Graphex Introduced its grapheX diamond technology, utilizing wide particle size distribution of high grade De Beers synthetic diamond with the largest diamond grit sizes to be used in Europe.

Hilti exhibited and demonstrated its DST 10-CA

Wall saw for cutting reinforced concrete. Its compact design and trolley allows it to be transported and set up quickly by just one person. Also demonstrated was the DD-WMS 100 water management system.

Pentrunder UK has added a diamond tool division and used the exhibition to show how its range of equipment has been designed to operators' jobs easier, safer and more efficient.

The Drill and Saw Association was present to represent and support companies involved in the drilling and sawing industry. DSA members benefit from approved operator training courses and the adoption of national safety standards and working codes of practice, as well as affiliation with other recognised construction industry international and national associations. The DSA also provides a forum for members to meet within an organised framework to discuss and share best practice and the future development of the industry.

Other areas covered

Other equipment and services, which stood out, included Multiquip (UK) with its comprehensive product range. This includes the Whiteman power trowels, Mikasa compaction plates and compaction rammers and concrete flatwork tools. The Whiteman ride on power trowels and its latest range of water pumps were demonstrated.

Atlas Copco launched the HiLight H5+ LED light tower, which has been recognized at the Red Dot Design 2017 Awards. "We're delighted to have once again achieved this renowned global prize for outstanding design," said Atlas Copco portable energy president Peter Lauwers. "The HiLight H5+ is an in-house designed product that we are very proud of. When designing new products, we focus on the strategic triangle of performance benefits for the customer, efficiency, in terms of both fuel and service needs, along with environmental benefits; both these products excel in all three categories."

Concrete Services and Supplies, a specialist concrete product and services company, featured its own Contop topping spreader as well as concrete power buggies, pans, blades, concrete tools and other concrete flooring accessories.

Plantworx now the place to be

Plantworx has grown as an exhibition in its short life. Given the manufacturers represented, and the visitor profile, the show fills a niche, which allows companies of all sizes to display their products and services. Many of these companies are often not able to exhibit at larger shows, due to cost. Plantworx however presents construction, demolition and civil engineering companies with the opportunity to see at first hand equipment and services ideal for their requirements.



Diamond Tools and Equipment

GET MORE DONE

Industry leading performance.

Our power cutter solutions cut more than just concrete, they also make quick work of natural rock, hardscape, stone, dry stack, masonry, brick — pretty much any hard surface.

- *Square corners with no overcuts*
- *Precise openings of all shapes and sizes*
- *Egress window*
- *Deep plunge cuts (up to 25"*)*
- *Landscape and hardscape jobs*
- *Confined spaces*

**Available in gas, hydraulic
and pneumatic power**

CALL TO ORDER: 800.321.1240
EMAIL: orders@icsdiamondtools.com

*25" with the hydraulic or pneumatic powered cutters.

© 2017 ICS | Blount Inc. Pricing and specifications subject to change without notice.



Chicago Pneumatic breakers first choice in Qatar

Rock Fall Contracting, a major civil engineering and earthmoving specialist contractor based in Doha, Qatar, has augmented its fleet of Chicago Pneumatic rig-mounted hydraulic breakers with the addition of new RX8 and RX54 units. The breakers are destined for use in demand-

ing applications within the programme of infrastructure projects, culminating in Qatar's hosting of the International Association of Athletics Federations (IAAF) World Athletics Championship in 2019 and the Fédération Internationale de Football Association (FIFA) World Cup in 2022.



Teamwork led to success in Chicago I-90 project

Interstate 90 in Chicago is a major thoroughfare through city and any road or bridge repairs, require advanced planning, teamwork and the right equipment to keep everything on schedule.

Currently a large stretch of I-90, from Chicago to Rockford, is undergoing a major renovation project entailing the removal of lanes to be replaced by wider, concrete ones. Chicago Cut Concrete Cutting, based in Schaumburg, Illinois, is responsible for demolition slab sawing the old concrete lanes, and then green sawing the new concrete to control shrinkage cracking.

Over 24km of roadway, including five bridges, need to be demolished and green cut. With such a large project and tight deadlines Tiffany Phillips, president of CCCC, knew her team had to not only rely on the efficiency of the equipment, but also how well the operator and equipment worked as a team.

"From our inception we've partnered with Husqvarna Construction Products because we wanted to use the best saws. Husqvarna's products are efficient and when paired with our operators, we knew we would stay on track with this project," said Phillips. For the removal of the concrete lanes, CCCC chose Husqvarna's

FS 8400 D, FS 6600 D and the new Tier 4 compliant FS 7000 D floor saws. These saws are known for high production rates and ergonomics that help keep operators cutting 280mm deep in rebar-loaded concrete. For green sawing, Husqvarna Soff-Cut 5000 Ultra Early Entry saws were used.

To meet Illinois State Toll Highway Authority deadlines, CCCC had to work around the clock. The heavy-duty, high-horsepower floor saws and Soff-Cut saws could handle the rough terrain. CCCC lead project manager, Angelo Salatino, constantly made sure everything was ready for the crews to perform without issues. Having everything needed available, along with the Husqvarna saws and operator know-how, CCCC stayed on time with deadlines.

"The key to any project is teamwork between our team members, operators and saws. Without each and machine working together, we wouldn't be as successful as we've become. We've gone from a small company to a major force in our market with Husqvarna's equipment and help along the way and of course, thanks to our team. This is what makes our company great," said Salatino.



D-Drill goes to college

In the UK a utilities company using an excavator and breaker to remove a large concrete block was making too much noise outside Imperial College, London and called in concrete sawing and drilling specialist D-Drill to help out.

The 8.5m x 1.3m x 1m redundant crane base was in the way of a new pipeline and needed to be removed, but the first choice of excavator fitted with a breaker was too loud and causing vibration in the college library.

"The heavy excavator was making too much noise and we had to find a way to remove the concrete without causing a disturbance," said D-Drill London branch manager Jimmy Smith. "Using our automatic feed diamond drilling rigs, our operatives stitch drilled the perimeter of the trench to a depth of 1m. We then diamond drilled 200mm diameter holes to accommodate our 200mm hydraulic bursting head at two holes per 750mm spacing along the length of the trench. That allowed us to burst the concrete out with the spoils removed by a 3t machine supplied by the site."

This allowed the students in the library to concentrate on their work and the main contractor was also delighted with the result.

"The work was completed within time and budget, but most of all without any noise or vibration to interrupt the college library or the students' normal day," said Smith. "The operators were very careful with the stitch drilling and kept the trench straight and plumb and the client was very happy with our work."

www.d-drill.co.uk

steinexpo

10th International Demonstration Show
for the Construction Materials Industry **2017**



**30/8 to
2/9/2017**
(Wed to Sat)



Tickets online:
www.steinexpo.de/registrierung



**35315 Homberg/
Nieder-Ofleiden,
Germany**

Further information by:
Phone +49 7229 606-30, info@geoplanmbh.de



GEOPLAN
GMBH



airtec VISTA FLOOR

THE SMART TECHNOLOGY FOR SURFACE PREPARATION



MILLING / PLANING

- RM-400 - 400mm working width
- Built for high production on concrete and asphalt
- Hydrostatic-drive



GRINDING/REMOVING



- RM-320 - 320mm working width
- Successful grinding/planing of concrete and asphalt
- Large variety of cutters
- Self-propelled



POLISHING

- BS-800 - 800mm working width
- Concrete surfaces
- Terrazzo, marble
- Unique patented planetary system



SAFETY GROOVING / SURFACE CORRECTION

- SM-320 - 320mm working width
- Where cars, people, airplanes and animals go
- The diamond-drum concrete shaver



All equipment with dust collection systems!

airtec **FOR SURFACE PREPARATION**
www.airtec.ch - info@airtec.ch

Demolition in the centre of Helsinki

The demolition of the nine storey Kasarmintori buildings in the centre of Helsinki, Finland was presented at the recent DDR Expo and Forum in Brussels. PDi reports.

The Kasarmintori buildings were built in 1959 and 1969 and used as office and business premises. They were built in connection with two neighbouring buildings and had double basements that ran adjacent to a separate courtyard basement. The area was about 20,000m²/floor and demolition created about 29,000t of demolition waste.

Demolition work was done high above ground level and workers might have been exposed to chemical substances to classification VNa 205/2009, which are considered dangerous work.

The time frame for the demolition project was quite tight and the project had to be finished in only four months. In addition the working hours were limited between 8am and 4pm during working weeks and no working was allowed during weekends

or public holidays. The logistics operations in the city area were constrained and could only take place during 8am to 4pm and not at weekends. Demolition materials were transported off site between 10 to 15 loads/day.

Work method – part 1

The Pohjoisesplanadinkatu Street was closed and used as an operations platform, while the adjacent street was turned into a two-way road. The first demolition operation was to create an entrance to the centre courtyard. Demolition was conducted normally until it became clear that the neighbouring building did not have a shared structural wall as the documentation indicated otherwise. Light demolition was undertaken after structural inadequacies

became clear through excess vibrations. The frame of the wall was partly cast on the brick composition and anchors were attached to the ground.

Work method – part 2

Demolition was conducted normally and since this building was at the corner of an active two-way street, it was necessary to take safety precautions. A crane was used to support different size protective heavy masts. To reduce the dust on site dust suppression cannons with water mist where used. Light demolition was undertaken after structural inadequacies became clear via excess vibrations. The same operations were undertaken again due to structural inadequacies.

www.delete.fi

TOPTEC

SPEZIALMASCHINEN GMBH







Remote Controlled Demolition Robots

Breithornstrasse 10, D-8185 München, Germany
Phone: +49 (0)89-427 205 50
info@toptec-germany.de • www.toptec-germany.de



Contractor opts for dsb innocrush 30

In 2014, the Austrian mobile crushing equipment manufacturer dsb Maschinenbau, supplied an innocrush 30 to contractor Grob Abbruch Recycling in Huttwil, Switzerland. GAB, pleased with its performance has now acquired another innocrush 30 from dsd Maschinenbau complete with return conveyor for the treatment of building waste.

A major improvement is the flow of material through the plant. This could be significantly improved by various modifications along the conveying path through the machine. With a feed grain size of 0 to 800mm and a final grain size of 50mm to 110 mm, the machine with a Caterpillar C7 engine has a throughput of 300t/h despite the lowest diesel consumption of well below 20l/h.

"The dsb-plant is immediately ready for use, extremely straightforward to handle and is characterized by unbeat-

able performance. The innocrush 30 thus fulfils all my requirements once again", said GRB managing director Peter Grob.

dsb innocrush, represented in Switzerland by Giegold Recycling, remains faithful to its corporate philosophy of simple operation and no electrics that is often more fault-prone than helpful. "Efficient working with the machine on site, as well as during loading and transport, had the highest priority in the further development of the product range," said dsd Maschinenbau chief executive Dieter Durstmüller.

With the compact size and weight of 27.8t, the dsb plant can be transported without special permission. The screen box with the slewable return conveyor remains attached to the machine during transport, saving cost and increasing profitability of the machine.



Hands-on demolition

It might seem to many mothers that all 10 year old boys try to wreck their houses, but for Texan Lloyd Nabors he really did, starting a lifelong love of demolition, assisted with his fleet of Volvo machines.

Nabors was a young boy when he was first inspired to start his own demolition company. His father did demolition work and young Nabors helped out, starting around the age of eight, but he wanted to work on his own. "Dad, I want to run a piece of equipment by myself," said Nabors. "He said that when I was 10 years old I'll let you wreck your first house. So he turned me loose. I was running a wheeled loader and I got to wreck my first building when I was 10 years old. And I just loved it."

Now many years later, Nabors is president of Lloyd D. Nabors Demolition, headquartered in Hutchins, Texas. Projects have taken him across Texas and into neighbouring states. He was committed to the brand of machines he worked on as a boy and first invested in Volvo construction equipment 12 years ago, after talking with a friend in the excavation business. "He said you need to try these Volvos, they're good machines and his savings on fuel were tremendous. So we bought one," said Nabors.

The company now has a fleet of nearly 20 Volvo excavators, including a Volvo EC460 high-reach excavator, the first in Texas. "Our long-reach excavator helps us when we have a structure that is six or seven stories tall. It keeps our operator a safe distance away and we're

able to reach up and demolish a building," said Nabors. "We can reach up and cut the columns. We used to use a wrecking ball, and it wasn't really controllable. You'd just knock a building down, and wherever it fell, it fell. We're able to control our demolition much better now."

"Texas happens to be a state where you don't need a license to perform demolition," said Lloyd D. Nabors Demolition vice president Satterwhite. "So you might get a few more cowboys who may have a pick-up truck and a sledge hammer and they're going to tear down an apartment complex. Our job is to make buildings come down, and we want to make sure we're doing it in a safe manner. We want everybody to leave the same way they came that morning."

MB Crusher upgrades screening bucket

Designed to work with excavators from 9t to 20t, the MB-S14 screening bucket has been upgraded to the fourth series. It weighs 1.1t and has a loading capacity of 1.1m³ and has baskets made of interchangeable modular panels, which are available with various sized holes. Optional attachments include a pulveriser kit, to demolish processed dusts and allow screening even in closed environments, and a steel separation kit, to screen and separate steel from demolition debris.

A German company with a demolition depot had been accumulating a mixture of tonnes of earth and debris and has been using an MB-S14 crusher screening bucket on a Liebherr 900 excava-

tor to screen and separate the materials and clean up the storage area.

Equipped with a panelled basket with 20mm x 20mm holes, the MB-S14 screening bucket allowed the company to manage the work area in just a few days. The soil was separated from the larger debris and bulkier pieces of material, and the resulting inert material was gathered in an orderly manner.

With the MB-S14 screening bucket, the customer obtained clean material for marketing and currently screens over 15t/day of material. A video is available at this link: <http://www.mbc crusher.com/en/gb/communication/news/from-now-on-on-site-separation-will-cost-less>



DDR Forum and Expo 2017, FOCUSED ON THE CIRCULAR ECONOMY



The European Demolition Association held its first DDR Expo and Forum in June. The event, which is planned to be held at the Brussels Expo every third year, included an exhibition with over 20 exhibiting companies and three days of seminars. Attendance was expected to be round 1000 with a focus on the circular economy and how to adapt. PDi Editor in chief Jan Hermansson reports.

The DDR Forum and Expo 2017 was an event where professionals in the industry had the opportunity to meet under the same flag: How to go towards the Circular Economy? Participants came from different corners of the world representing contractors, institutions, associations and federations, including the European Commission. The conference sessions covered topics of interest for the attendants listed in PDi 2-2017.

Heavy partners and exhibitors

The institutional partners were the European Commission, Flemish Construction Confederation, European Builders Confederation; Construction Products Europe; Fédération Internationale du Recyclage; the Concrete Initiative; Metals for Buildings; European Aggregates Association; European Convention for Constructional Steelwork; European Federation of Glass Recyclers; Committee for European Construction Equipment; and VITO.



Between the two conference areas, the workshop room and the planetary room the DDR Expo was staged with 23 exhibiting companies. Caterpillar used the opportunity to launch its Cat340F UHD track excavator. Other exhibitors were Liebherr, Keestrack, Dynaset and MB Dustcontrol who launched a new dust suppression cannon. In addition Atlas Copco, Arvi, Demarec, Arden Equipment, VTN Europe, Leotech, Hydraram, Grabiron, Rotar, Dem-tech-LaBounty, Spraystream, Antea Group and DDB displayed some of their products. Spraystream showed a new small battery driven dust suppression cannon. Quite new to the European market was the Ukrainian manufacturer Grabiron. In addition, the contractor companies Italian Despe and VI.BI, as well as Internat, supported the event.

The general opinion among the exhibitors was that attendance was low and disappointing. This in combination with the high cost of exhibition space might cause problems at future events. However, the second day was with higher quality of visitors.





EDA General Assembly 2017

Several national associations held meetings during the event, including the European Demolition Association's general assembly. EDA members reviewed the main subjects of the association and decided how to face key projects in the future. In addition, there was time to create an overview of the demolition situation in each country, where the delegates shared the forecasts for the future. The following representatives of the national associations were present in the meeting:

CASO (Belgium): Johan D'Hooghe and Kees J. De Groot
FDA (Finland): Janne Salonen and Riikka Kinnunen

SNED (France): Sebastien Sureau, Nathanaël Cornet-Philippe and Patrick Frye

DA (Germany): Andreas Pocha

NAD (Italy): Stefano Panseri and Maria Beatrice Celino

AEDED (Spain): Francisco Cobo and Daniel Anka

RIV (Sweden): Igor Kecskés-Maconkai

NFDC (United Kingdom): William Sinclair, Howard Button and Paul Brown

SDA (Serbia): Dejan Bojovic

The EDA's next annual event will take place from 7th to 9th of June 2018 in Vienna, Austria.

www.europandemolition.com



Your Attachment Supplier



What makes Rotar unique

At Rotar we believe that people and machines can operate more efficiently. From this philosophy, we develop state-of-the-art demolition- and recycling attachments for hydraulic excavators and wheelloaders. Rotar is a manufacturer, which means that we are responsible for the development and production of our products ourselves. That is the only way to guarantee the well-known efficiency, quality and productivity of Rotar attachments.

Our employees treat your Rotar attachments as if it were their own. Our craftsmen always aim to develop the best products. That is why we are in constant communication with our customers and dealers, and we often develop products based on their experiences, suggestions and ideas. Once your attachment leaves the Rotar Factory, it bears our name. A name that represents a product with unique performance, produced by a unique team. Uniquely for you.

Discover our products
at www.rotar.com



GET THE **RED** CRUSH!

NPK'S touch: *As light as Sakura, as sharp as a Samurai sword*

Osaka-based NPK hardly needs any presentation. Arguably, the most expensive demolition attachment brand in the world, it is nonetheless one of the most sought-after. This April past Andrei Bushmarin visited the original NPK facility located on a quiet sakura-lined street in Higashiōsaka (East Osaka).



The demolition attachment business is not soft money. New players emerge almost every year heating up the competition and cooling down prices. New products and technologies are copied almost as soon as they hit the market. It takes a lot of creativity and stamina to stay market leader in a cutthroat environment like this, but NPK does it with ease and elegance.

The golden age

The Higashi-Osaka facility was built in 1965 originally to accommodate NPK's chemical engineering division. Chemical vessels and storage tanks were a core business for NPK when it originated in the early 20th century. It was not until some years later that pneumatic tools came into the picture. In 1970, the facility was expanded and renovated to incorporate the fast-growing construction equipment division.

As far as engineering creativity goes, the golden period was from 1970 to 1992 when manufacturing of attachments was relocated to Nabari. It was then that NPK designed many of its signature products, such as out-sized hydraulic breakers and concrete crushers and shears featuring the now world-famous booster mechanism.

New chapter

By 1992 demand for NPK tools outgrew Higashi-Osaka's capacity. A bigger facility was needed so it was decided to move the construction department to Nabari in the Mie prefecture. This heralded a new chapter in Higashi-Osaka's history. Following the relocation, it took on a role of a multifunctional centre tackling a wide range of tasks.

To enhance the plant's functionality, it was expanded in December 2016. A new 3,000m² wing was added to provide space for additional office and equip-

ment maintenance facilities. Now the 10,000m² facility comprises two main areas. The larger part of 6,852m² is used for production of pneumatic tools while the smaller one of 3,146m² is allocated for a so-called Customer Service and Solution Center (CSSC).



The 10,000m² facility comprises two main areas: the bigger part (6,852m²) is used for production of pneumatic tools while the smaller one (3,146m²) is allocated for a so-called Customer Service and Solution Center (CSSC).



Complex repairs of used attachments are performed at Higashi. Breakers, crushers and pulverisers in need of skilful repair are brought over there from all over Japan.

NPK

Customer Service and Solution Center

The CSSC is used for customer consultations and dealer training sessions. Customized tools account for a sizable share in NPK's portfolio so in-depth consultations with users are an important part of the product development process. The centre's other task is repairs of used attachments. Breakers, crushers and pulverisers in need of repair come from all over Japan. Until 1 April 2017 the facility was managed by Tadashi Saito who has 38 years' service with NPK. Having joined the company straight from university in 1979, Saito is a perfect example of the time-honoured Japanese corporate culture, which values loyalty and dependability above all. This year he yielded his position to a younger colleague Masaaki Tsuchida who now manages Higashi-Osaka's day-to-day operations.

www.npk.co.jp



Left to right: Kumi Makimoto -Sales & Marketing, Masaaki Tsuchida -current manager of the CSSC, Tadashi Saito – the Center's previous manager.



Customized tools account for a sizable share in NPK's portfolio so in-depth consultations with users are an important part of the product development process.



WATCH THE
VIDEO



Klindex is the choice of top flooring professionals.

Floor grinders • Dust extractors • Diamond tools • Burnishing machines • Chemicals • Floor Solutions

www.klindex-america.com | www.klindex.com

The “art” of CONCRETE CUT

Within the precincts of Africa’s most valuable real estate, V&A Waterfront at Cape Town Harbour, was a clutch of grain silos, part of the long-unused Grain Silo Complex built in 1922 for servicing exports and imports through Table Bay. The complex was a protected historic landmark, its future periodically debated as the luxury retail, restaurant and hotel tourism magnet rose around it, until an ambitious solution was proposed that challenged local concrete cutting expertise for 30 months. PDi’s Africa editor Kevin Mayhew reports.



Tunnel roof slab reinforcement.

The Grain Silo Complex, within sight of Robben Island, the incarceration facility for African icon Nelson Mandela, captured the imagination of London-based architects Heatherwick Studio, local preservation societies, city fathers, V&A management and a wealthy Kenya-based German entrepreneur and collector of continental and diaspora African art, Jochen Zeitz.

The US\$38M (€33.7M) solution retained the industrial façade of the complex while sculpting the interior to accommodate the grandest collection of contemporary African art in the world. Its design includes an atrium higher than the Louvre in Paris, and will be known as the Zeitz Museum of Contemporary African Art, due to open in 2017.

The intricate cutting work was undertaken by contractor WBHO, alongside Cape Town-based specialists Concrete Worm. Ross Demolition was responsible for the post-cutting dismantling and extraction of debris.

Concrete Worm managing director, Peter Fink, said that the project was the most ambitious of the company’s 20-year history, a sharp learning curve that took up to 10 teams on site at any time in certain phases. “There were three distinct elements that each posed challenges and had to be undertaken with many restrictions,” said Fink. “Not least of these was to preserve the integrity of silos built nearly a century before, and minimising dust and noise inconvenience

at South Africa’s prime local and overseas tourist attraction over a protracted period.”

The first focus were the 42 circular silo tubes packed in six rows of seven silos, each about 40m tall. The initial task was to saw cut a slot under the outer wall to allow for a raft slab to support the new structure. These slots were phased through the entire silo bin area until all the bins had a new support slab. Only then could the contractors begin cutting the internal walls into blocks to create a void inside the bin area.

All the walls were curved, which made it difficult to mount wall saws, and scaffolding work meant special training for staff to work safely at height. Much of the scaffolding was suspended from the top of the silos to allow machine dismantling and construction to continue below. This meant all equipment, including wall saws using up to 1.6m diamond blades, had to be hauled to the roof then carried down the scaffold to the area of work.

The round bins where the decorative scallop cut had to be made were the most challenging. Here a surveyor, templates and 3D drawings were used to indicate where to cut. “The challenge was cutting a constantly changing curve through multiple round chambers. Most of these cuts were done by hand, as no rail mounted machine could follow the cut line,” said Fink.

From a dismantling point of view the initial removal was that of a tower atop the silo building, which required

TING



Cutting sheet piles for basement parking.



Cutting elevator building facade.



a 5t excavator to cave the walls in with steel cutters that followed to remove the steel, according to Ross Demolition site agent Roland Mountjoy. The company used 175 staff, six foremen, three operators and six cutters during the long and complex project.

A steel and timber platform was erected at 6m intervals for the crane to lower the 5t excavator to the various platforms to demolish the internal walls of the silo bins down to ground level.

Second focus was the tall elevator building that contained rectangular silo bins for the bottom half and five upper level slabs. The building's very small windows had to be enlarged. There were 120 openings 4m x 3m

that had to be created for windows. Wall saws cut the top and sides of each window opening. This was done to free the walls from the existing columns before dismantling. Due to the age of the structures it was considered safer to cut the walls first, which ranged from 200mm to 480mm thick, before breaking. Each floor was done separately and could only start once certain structural elements were installed by WBHO for construction.

The rectangular bin walls had to be removed to make way for slabs and rooms. This was also a challenge as entry was from the top via suspended scaffolds. Some of the bins were only 2m x 1m shafts. These tight, dark areas required a high level of skill to complete. The walls

were cut free from the columns before Ross Demolition could dismantle by hand and remove a staircase and lift shaft with cutting torches and jackhammers.

Final task was drilling and saw cutting through the tunnels and basement of the structure where the walls and slabs were the thickest. These 700mm thick concrete slabs were reinforced with railway lines. Openings through the slab were required for new foundations. New door openings and decorative cuts had to be made through walls ranging from 600mm to over 3m thick. Some of the cuts had to form a curve and was achieved by constantly adjusting the wire saw pulley system, a first for Concrete Worm.



Mantovanibenne.com

1963 - 2013
50
anno-year



TWIN BOOSTER
CRUSHING FORCE: 130t

SUPER LIGHT, SUPER POWER
THE ONLY ONE
OF THIS CATEGORY WITH
STANDARD TWIN BOOSTER

HYDRAULIC CRUSHER
FOR 3 TO 6 TONS
EXCAVATORS



sales@mantovanibenne.com



MANUFACTURER OF DIAMOND TOOLS AND MACHINES

a professionals choice

made in Holland

Modular drill stands for the professional
CNC PRECISION



NEW TECH drilling
EXTREME FAST IN IRON



SPECIALIZED IN
*HOLLOW CORE SLABS
PRE STRESSED CONCRETE*



*

DRILLING

*

*

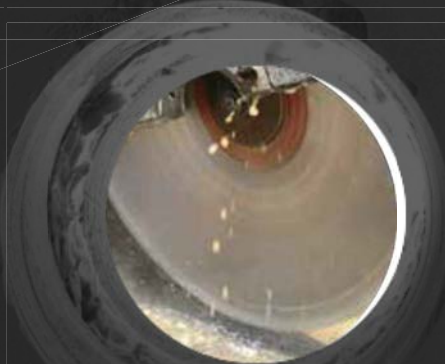
SAWING

*

*

FACTORY

*



Meijer Diamond Tools

www.meijertools.nl

tel: +31 313 659555

email: info@meijertools.nl



TURNING A BANK VAULT

INTO A POLICE OFFICE

Previously there were gold bars piled up to the ceiling and bank notes transported on pallets. The walls and ceiling of the two-storey vault at the branch of this former State Central Bank in the Swabian town of Aalen, Germany, were therefore designed accordingly.

Cutting four windows into the nearly 2m thick vault walls as part of the alterations to the office complex is a difficult task. But this did not deter the contractor assigned for the job. "They always call on us when it's really difficult, when nobody else can or wants to do the work," said concrete drilling and sawing specialist Jan Eckert from Simmelsdorf near Lauf. To tackle the job, Eckert used Husqvarna W 1405 and W 1410 Diagrip saw blades with a diameter of 600mm to 2m.

Eckert and his colleagues had challenges to overcome on this site. After the closure of the branch, the Federal Police will move into the building during the coming year. They need daylight in the two vault rooms and is why Eckert has to create four openings for four windows, two with a width of 7m and a height of 3m, and two with a width of 4m and a height of 3m.

Each vault has double walls, 1m and 500 mm thick, with a distance of 500mm in between. The concrete in the 1m wall includes materials like ceramic and fibre steel, which makes the concrete extremely hard. There is also a layer of 3mm to 5mm steel balls. "Cutting conditions are really difficult here. I tested blades of several brands to see if I could get better life time, but Husqvarna W 1410 was the only blade able to make the cut," said Eckert.

Husqvarna used this site to test a new 800 m blade design with the high-frequency electric WS 482 HF wall saw operated by the new PP 490 power pack. "We have coordinated closely with the central office in Sweden to develop a special compound for the segments and also to change the geometry," said Husqvarna diamond tools product specialist Lukas Rettenbacher. "Our goal is to increase the stability of the tool, especially when used in extremely hard concrete, but without a loss in speed."

The test in the vault was a success. "We were able to significantly extend tool life by about a factor of three," said Rettenbacher. "When our specialists on a site like this gain experience and forward the data to the central development department, it will benefit all our customers."

"The top priority for me is the productivity," said Eckert. "The

machines and tools just have to operate. Because basically we work extremely quickly, which is what makes us so successful."

The focus on productivity is also why the new PP 490 power pack has become a favourite for Eckert, as it is equipped with a wireless remote control unit, providing an output of 20kW, and can operate multiple devices such as power cutters or drill Motors. "Modularity and flexibility are always an advantage," said Eckert.



Massucco T.

Massucco T is a family-owned company. Left to right: Teresio Massucco (the founder), Cristina Massucco (the COO), Paolo Massucco (the CEO).

Massucco T:

Knowledge of “noleggio” and contracting expertise

Cuneo-based Massucco Group is Italy's biggest plant hire company servicing construction, demolition and recycling industries. With a fleet of 1,300 units available for rent, its capabilities are on par with Europe's leading providers. However, there is more to the Group than just rental business. It also incorporates Massucco Costruzioni, which is a major demolition and recycling contractor in its own right. Andrei Bushmarin reports.

“Noleggio” means “rental service” in Italian. After 55 years in this business Massucco T has made quite a name for itself both inside and outside Italy. But it is the company's activity as a specialist demolition contractor that deserves a place in the spotlight too.

Big fish from a small pond

Cuneo is a run-of-the-mill Italian town within an hour's drive from Turin. The landscape seemed bleak or maybe it was just the weather that day with the overcast skies and drizzling rain that made it look so. As we drove by empty fields and low-rise buildings, a huge site suddenly opened up all strewn with excavators, mobile recyclers and material handlers. Admittedly, it was a jaw-dropping sight to see. I did not expect to come across such a concentration of heavy-duty machinery in a tranquil, almost parochial, place like this. Little did I know that it was just the first in a whole series of surprises I experienced that day.

A true artisan

Founded by Teresio Massucco (hence the letter “T” in its name) in 1971, Massucco T is a prime example of a traditional family-owned Italian company. Teresio grew up in a post-war Italy where most children did not have the luxury of getting a fancy education. No sooner sec-

ondary school was out, he had to start learning a trade just like everybody else. Teresio always had a knack and passion for machines, so he sought out a mechanic who taught him nuts and bolts of the profession. Selling agricultural equipment under the auspices of a local agrarian consortium was another invaluable formative experience, which would influence his *modus operandi* as a businessman for years to come.

Massucco Group emerged

Teresio's company started out by executing state-funded construction projects such as road and aqueduct building and earth excavation. These jobs underpinned Massucco T's growth throughout the 80s and 90s, resulting in the establishment of Massucco Costruzioni – a specialist contractor company in 1997. Two years later Massucco T Srl. – providing sales and rental services to domestic and international customers – was registered, which signalled the arrival of Massucco Group on the market. Back then Massucco T Srl. imported used machinery – mainly, forklifts and mini excavators of various brands – from France and Japan. The machines got reconditioned in house and resold or rented out to professional contractors.

A modern-thinking company

With four rental depots in Italy, two in France and one

In the end... it's only about the right tool

DEMAREC MULTI-QUICK PROCESSOR POWER TOOL FOR PROFESSIONALS



MQP-W
WOOD-JAW



MQP-C
COMBI-JAW



MQP-D
DEMOLITION-JAW



MQP-U
UNIVERSAL-JAW



MQP-E
EXTREME-JAW

MQP-T
TANKSHEAR-JAW



MQP-S
STEEL-JAW



MQP-P
PULVERIZER-JAW



In the end... it's only about the right tool!

The MQP by DEMAREC proves every day that good tools are literally and figuratively speaking more than half the battle. In fact: in the end, the correct piece of equipment determines the success and outcome of each job. Therefore, DEMAREC advises its contacts to focus on the piece of equipment and not on the machine. And... never the other way around! Thus, it is never ever necessary to surrender any capacity and as a result any (business) performance and profits. In other words, an investment in an MQP by DEMAREC is much more than a sound investment that is guaranteed to repay itself 100%!



www.demarec.com / www.demarec-deutschland.de / www.kinshofer.com

DEMAREC. De Hork 32, 5431 NS Cuijk, the Netherlands. Tel.: +31 (0) 485 442300, info@demarec.com

DEMAREC Deutschland. Im Rohnweiher 14, D-53797 Lohmar, Germany. Tel.: +49 2205 92027 0, info@demarec-deutschland.de

KINSHOFER UK. 4 Milton Industrial Court, Horsfield Way, Bredbury, Stockport, Cheshire, SK6 2TA. Tel.: +44 (0)161 406 7046, sales@kinshofer.co.uk

KINSHOFER USA. 6420 Inducon Drive - Suite G, Sanborn, NY, 14132. Tel. +1 (716) 731 4333, sales-usa@kinshofer.com

Massucco Group's headquarters in Cuneo.



Massucco Costruzioni employed mini excavators equipped with hydraulic breakers to demolish the bridge's sections and foundations.



The job was completed within one night to the predetermined specifications.



With a fleet of 1,300 units available for rent, Massucco T's capabilities are on par with Europe's leading providers.



Massucco Costruzioni is capable of performing the most challenging demolition tasks.

in Tunisia, Massucco Group is well positioned to service its European and North African customers. However, its interests are not limited to these areas only; the Group actively seeks out commercial opportunities all over the world. Now in his seventies and officially a pensioner, Teresio Massucco is still intimately involved in the family business. But it is his children Paolo and Cristina – the Group's CEO and COO respectively – that carry the brunt of administrative load nowadays. Both were still in their adolescence when they joined Massucco T as trainees while still doing their studies. Now they stand at the helm of a company with an average annual turnover of some 20 mln. euros. Unlike many Italian companies that still rely very much on personal connections, Massucco T is a modern-thinking company, which makes use of every available digital technology to reach its customers. It is an authorized distributor of Hitachi Construction Machinery of 10 years, whose efforts in

making Hitachi one of the most popular construction brands in Italy is hard to overestimate. Five years ago it also became a representative of McCloskey International – one of the world's leading suppliers of mobile crushing solutions. The company operates a recycling site near Cuneo where it processes tons of various construction materials on a daily basis.

One-night demolition

Massucco Costruzioni – the Group's contracting arm – is staffed by 25 professionals with a long-term track record in construction and demolition. Its 150-unit fleet boasting excavators, loaders and a full choice of attachments allows the Italian contractor to perform even the most complex demolition and material handling tasks. One of the most remarkable projects executed by Massucco Costruzioni in the summer of 2016 involved demolition of an overhead bridge on the A21 motorway, which

runs from Turin to Brescia. A precondition to complete the job within one night to avoid traffic disruption on the motorway was the main challenge on the job. To solve it, Massucco specialists had to use a wide range of equipment including lighting towers. Demolition was done in three stages: first, the bridge's central section was dismantled with the full closure of the lanes, then the northern and southern parts were taken down with only respective lanes being temporarily shut down. The company employed mini excavators equipped with hydraulic breakers to demolish the bridge's sections and foundations. The resulting debris were collected and taken away for recycling. The bridge's steel sections were craned away and transported to a designated area. The job was completed within one night to the predetermined specifications.

www.massuccot.com
www.massuccocostruzioni.com

THE NEW **R1000S**

with vibrating discharge chute (Hardox)
gap measuring system
vertically adjustable magnetic separator
double deck pre-screen
and a lot more sophisticated features

Visit us at the

steinexpo
2017

Aug. 30, 2017 till Sept. 02, 2017
Stand No. C21, Demonstration Area C



ROCKSTER®
RECYCLER



KORMANN ROCKSTER RECYCLER GMBH

Wirtschaftszeile West 2 / 4482 Ennsdorf / AUSTRIA

Tel.: +43 7223 81000 / office@rockster.at / www.rockster.at

IACDS Annual Convention 2017



“BEST MEETING EVER!”

The 2017 International Association of Concrete Drillers and Sawers Convention in Vienna turned out to a success. The pan international concrete cutting association achieved its goals last year and proved a valuable hub for the improvement of the international concrete cutting arena. PD*i* editor in chief Jan Hermansson reports.

On 18-20 May IACDS held its 2017 meeting in Vienna, Austria. This year was special as formerly the annual gathering has been called the Annual Meeting, but this year it was staged as a full convention.

A complete transformation since Amsterdam
Since the fateful meeting in Amsterdam some years ago following the Austrian association's decision to leave IACDS the association has gone through a major transformation. IACDS has become a key asset for the international concrete sawing and drilling industry and is providing a valuable agenda for the industry. This is due to many factors including a strong and efficient board, a hard working secretariat under the lead of the president Julie White and José Blanco. During the meeting in Vienna the board's work was applauded and re-elected for another turn.

The convention was held at the Hotel Hilton Vienna Place in the centre of the city. The first day of the convention started after lunch with the workshop

‘Marketing the expertise of the specialists. How to promote the specialized industry.’ Later in the afternoon a board meeting was held followed by evening cocktails sponsored by Tyrolit.

Convention day with showroom

The following day started with networking in the hotel's conference area, which included a small exhibition with displays from Tyrolit, Diamond Products, Levanto and CreteBeater. This was followed by an opening address by IACDS president Julie White.

First conference session was held by Frank David, from the French drillers and sawers association, SNED who was addressing the risks to workers from exposure to respirable crystalline silica. The day continued with a speech from Martin Gödickemeier, from Hilti, about the IACDS Guidelines for anchoring of sawing and drilling equipment.

Michael Findeis, from the German drillers and sawers association, FBS spoke about new tools and technologies, new challenges and new business opportunities. He also demonstrated a new quick coupling system for core bits, which generated lively discussion during the following coffee break.

The second conference session opened with a speech from Philippe Wingeier, vice president of IACDS and delegate of Swiss drillers and sawers association, SVBS. Wingeier spoke about the IACDS Standard for tolerances on concrete sawing and drilling.

The day continued with a speech from Anders Andersson and Lars Sandström from the Swedish concrete sawing and drilling association titled ‘Beyond health and safety regulations.’ The presentation described the critical issues to protect workers and promote concrete sawing and drilling applications.

Prior to lunch IACDS general secretary José Blanco

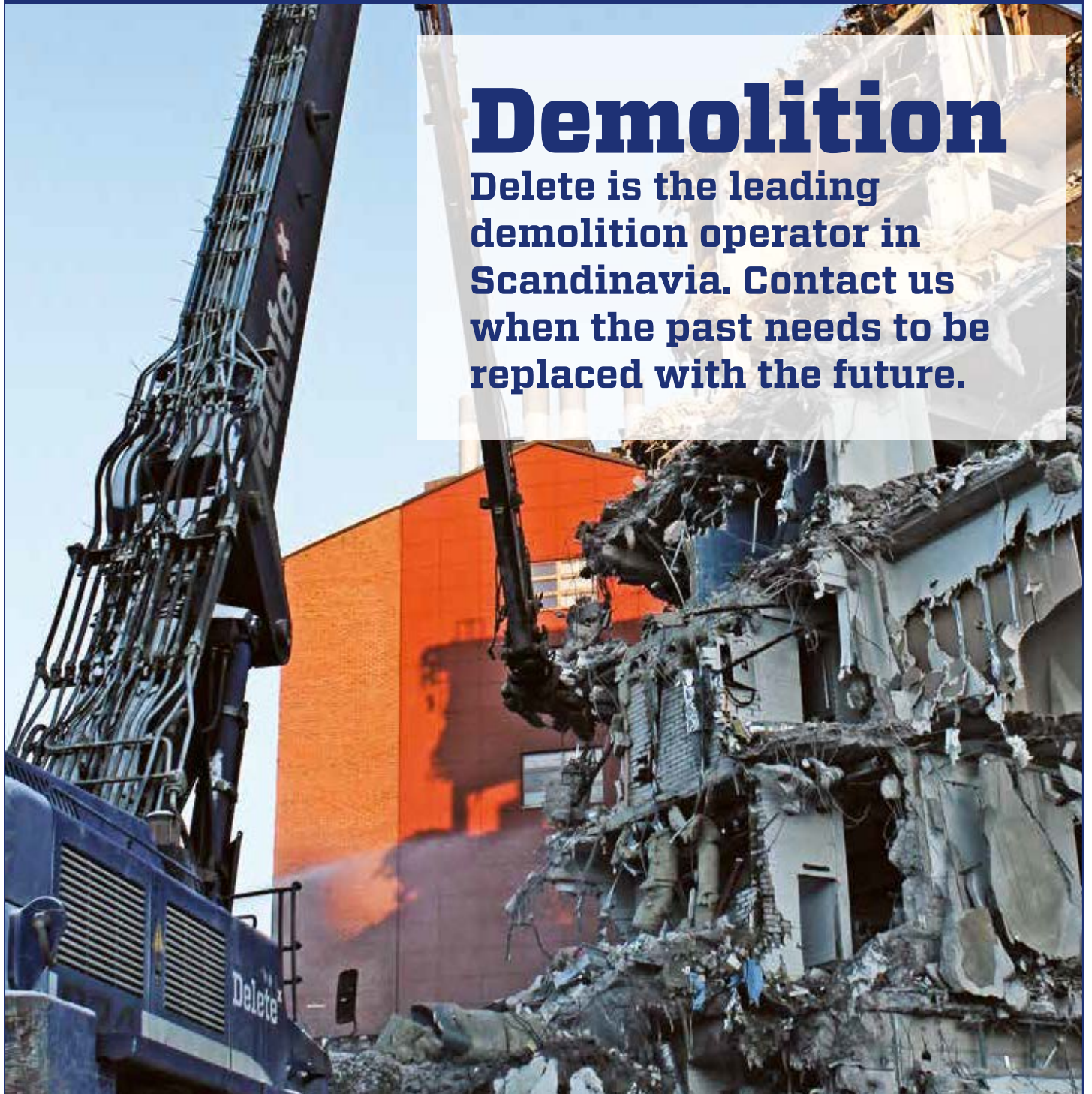


From the left Alfred Landl, Tyrolit, Yae Shibuya, Julie White and Norikazu Shibuya.

We Delete your problems.

Demolition

**Delete is the leading
demolition operator in
Scandinavia. Contact us
when the past needs to be
replaced with the future.**



CONTACT OUR DEMOLITION EXPERTS +358 10 656 1000

Delete 

info@delete.fi
www.delete.fi

General assembly.



The new quick coupling from Germany.



IACDS board re-elected.



raised the issue of a 'Professional Card' for concrete sawing and drilling workers.

General Assembly

After lunch the day continued with the IACDS General Assembly where each association described the market situation in their home country. The UK's Joel Vinsant said that the concrete cutting market was picking up after some tough years when quite a few firms went bankrupt.

Lars Sandström from Sweden said that the concrete cutting business was booming in Sweden. He explained that there is a demand for over a million new apartments to be built over the next ten years. The Italian delegate told the assembly that the situation in the Italian market is still not good. The reason is mainly political and the country is lacking money for new projects. However, the general opinion is that the economy has reached bottom and is now slowly on the turn.

Michael Fideis from the German association said that the concrete cutting market in Germany is still very good and has been for the last five years. The association has around 700 members and most are busy and it looks like next year will remain the same.

The Dutch market is also booming as there is a lot going on in the construction industry. However, the Netherlands does not have a completely functioning association, as there are about 120 members in the association and around 200 concrete cutters.

IACDS vice president Norikazu Shibuya, also from Japan's concrete sawing and drilling association said that the concrete cutting business is very good in Japan.

The employment rate is very low in the country and is difficult to find skilled workers. From having been a country with very little labour from abroad, Japan has now started to employ people from neighbouring countries like China and Vietnam. Shibuya said that this was a serious issue that the Japanese government needs to solve.

Many concrete structures in Japan need renovation and a new high-speed train across the country is also planned and will travel in some parts be 140m below sea level. This is a huge project that will provide a lot of work. Next year the IACDS Convention will be organised by the Japanese association and take place in Tokyo.

The Austrian market is also doing very well with plenty of work for the concrete cutting contractors. There is a lot of investment in the reconstruction and renovation field and last year was especially good and 2017 also looks promising.

Philippe Wingeier from Switzerland said that the first nuclear plant is to be demolished in 2019 and there is a lot of preparation work for this giant project. There are also many infrastructural projects going on and planning to start. There have been some large changes in the concrete cutting market, such as Nextag, which now is a part of Tyrolit, and Husqvarna has bought Demco Technik. The general trend is that both suppliers and contractors are becoming bigger and bigger through acquisitions. There is also a trend where general construction companies are starting their own divisions for concrete cutting services. But the growth of new concrete cutting firms is quite good and the association has gained a number of new members.

A delegate from the US concrete sawing and drilling association Pat O'Brien said that there is a sort of Trump effect and a business change in the US, which is positive. There is currently a good feeling within the US construction industry with rehabilitation all over the country bringing new projects. The member numbers in the association is now up around 500. Several of the members also offer floor grinding and polishing services, as well as ground penetrating radar in conjunction with traditional concrete cutting and light demolition services.

Also the French market is seeing some positive trends said the French delegate, Frank David. In particular there are many new project in the Paris area. The French association works has a joint association of concrete cutters, demolition contractors, and firms working with remediation and recycling.

A delegate from Australia's concrete cutting association CSDAA said that the market situation is rather slow, but there are quite a number of infrastructure projects going on and the future looks rather bright for the industry.

Anthony Keever, from Diamond Edge Cutting, said that Dubai is booming. "Business in Dubai right now is very good but also very challenging. To work there you really need to think outside the box, so to speak," said Keever. There is a lot of renovation work going on involving hotels, shopping malls and infrastructure and in the next five years a number of new mega projects are scheduled to start up.

José Blanco from the Spanish association said that the Spanish construction industry has finally hit the

HYDRARAM[®]

Hydraram develops and produces over more than 20 years attachments for use in demolition-, recycling- and forestry industry.

We supply a complete line of hydraulic attachments for each excavator from 1 to 200 tons.

**DEALERS
WANTED!**



**WE BRING
THE
MUSCLE**

WWW.HYDRARAM.COM



Anders Andersson and Lars Sandström.



Crete Beater.



Michael Findeis.



Joel Vinsant speaking.



Martin Gödickemeier, Hilti.

bottom and is now slowly climbing upwards again. At present there is quite a lot of renovation going on. The recession has been hard on the professional concrete cutting industry and there are only a handful of professional companies left.

Next Diamond Award at Bauma 2019

It was also decided at the meeting that the next IACDS Diamond Awards would be held in conjunction with Bauma 2019. Next year IACDS Convention will be held in Tokyo, Japan and hosted by the Japanese Concrete Sawing and Drilling Association. It was decided the convention in 2020 would be held in Milan, Italy. The participants at this year's IACDS meeting were very satisfied with the outcome of the meeting, which was well planned. They were also satisfied with the results achieved in the association since the last meeting and at this year's meeting. Donat Fritsch from Nestag and a former president of IACDS said that this was the best IACDS meeting he had attended and many of the participants expressed the same opinion.

The 2017 IACDS Convention ended with a dinner at the restaurant Vestibul in the centre of Vienna.

www.iacds.org



CSDA releases new specifier resources

In the US the Concrete Sawing and Drilling Association has released two resource documents the CSDA 2017 Resource Guide and CSDA 2017 Membership Directory which are available to download from the CSDA website www.csdas.org. These are aimed at helping architects, engineers, general contractors, government officials and anyone else involved with the specifying of concrete cutting, polishing, ground penetrating radar imaging and selective demolition work.

The CSDA 2017 Resource Guide contains 45 industry documents including standards,

specifications, tolerances and best practices to help specifiers better understand the wide range of capabilities and services that CSDA contractor members possess, and provide solutions by using diamond cutting tools on future projects.

This latest iteration of the CSDA Resource Guide includes the addition of seven new documents, along with revisions to several more previously published. Each one has been written, reviewed and approved by experts in the field and all are subject to regular updates by the association's Standards and Specifications Committee.

"The systems employed by CSDA contractors can provide significant cost advantages over conventional removal and inspection methods, yet many specifiers are unaware of these techniques and capabilities," said CSDA executive director Patrick O'Brien. "Whether it is a major infrastructure project, such as a power plant or dam renovation, or a highway or airport surface repair job, cutting, polishing, imaging or selectively demolishing concrete can be much more cost effective than other methods."

To further assist specifiers in finding specialist contractors, the CSDA 2017 Mem-

bership Directory contains a listing of all North American and overseas members from 21 different countries. There are also listings of those member companies that manufacture or distribute tools and equipment associated with concrete cutting, polishing, GPR imaging and selective demolition.

The directory complements CSDA's other online member search features, including an interactive map and search boxes, which can be found on the CSDA website.

For more information, contact the CSDA at 01-727-577-5004 or email info@csda.org.



THE UNIQUE SOLUTION FOR ANCHOR AND REBAR APPLICATIONS

**Hilti DD 30-W diamond
drilling system**



The new Hilti DD 30-W drilling system for wet core drilling not only cuts through rebar with speed and ease, it also lets you drill with exceptional accuracy even in brittle materials that would suffer damage from hammer drilling – letting you work virtually noiselessly in situations where loud hammer drilling may be an issue.

Find out more: www.hilti.group
Hilti Corporation | 9494 Schaan | Liechtenstein

INTRODUCING SCANDUST 3600 & 8000

Two new dust collectors, part of the ScanDust family, which are focused on the user, developed and designed to be safe and easy to run without disruptions.

READ MORE AT SCANMASKIN.COM

NEWS!



SCANMASKIN
MACHINES—MINERALS—KNOW-HOW

SWEDISH QUALITY AND KNOW-HOW SINCE 1975