

Site Report

**TYROLIT SPECIAL
PROJECTS TEAM
CELEBRATES
20 YEARS**

Page: 48

Site Report

**SERIOUS LONDON
CUTTING FROM
DYMATEC**

Page: 53

Site Report

**CUSTOMERS'
TESTIMONIALS
ENDORSE SHEARCORE
FORTRESS
ATTACHMENTS**

Page: 62

News

**STATE OF THE ART DRY
CORING APPROVED
FOR NUCLEAR POWER
PLANT USE**

Page: 64

Reports

**IACDS VISITS DAI-ICHI
CUTTER, LARGEST
CONCRETE CUTTER
IN THE WORLD**

Pages: 16-18

News

**DYMATEC
LAUNCHES P20W**

Page: 36

Reports

**TOKYO EMBRACES
CLEAN AND QUITE
DISASSEMBLING**

Pages: 38-39

Special features

**NEW WHEEL
LOADERS**

Pages: 42-44

CRASH COURSE

IN EXCAVATOR ATTACHMENTS

Pages: 20-34



NEW PERFORMANCE STANDARD FOR FAST DEMOLITION

ALL NEW MP300 SERIES MULTI-PROCESSORS FROM 18 TON TO 90 TON.

SPEED AND POWER. The new Cat MP300 series combines innovations in hydraulics and booster technology to make cutting and crushing even faster! So efficiency and productivity go up. The MP300 series sets the performance standard for demolition work tools. Talk to your Cat dealer for a great deal. **Cat.com**

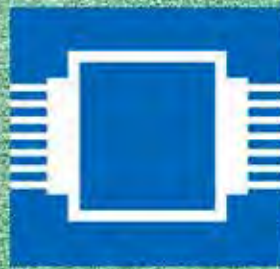
BUILT FOR IT.

DOWNLOAD BROCHURE [www.http://bit.ly/Cat-Fast-Demolition](http://bit.ly/Cat-Fast-Demolition)



©2018 Caterpillar Inc. All rights reserved.
CAT, CATERPILLAR, their respective logos, "Caterpillar Yellow" and the POWER EDGE trade dress, as well as corporate and product identity used herein, are trademarks of Caterpillar and may not be used without permission.





ONLY WIRE

WIDECUT

18:19



NEW BRAZED WIRE!



bauma CHINA

Shanghai, November 27-30, 2018

VISIT US

Hall E3 / Stand 181

BEYOND EXPECTATION. ONLY WIRE!

Groove



Ø 15.0*40 bpm

Steel



Ø 10.2*48 bpm

Concrete



Ø 10.5*40 bpm

Finish



Ø 9.0*48 bpm

www.widecut.com



Professional Demolition International Magazine

Address: P.O. Box 786,
SE-191 27 Sollentuna, SWEDEN

Visitors address:
Skillingevägen 14A, SE-192 71 Sollentuna, Sweden

Phone: +46 8 631 90 70
Telefax: +46 8 585 700 47
E-mail: info@pdworld.com
Website: www.pdworld.com
ISSN Registration: ISSN 1650-979X

EDITORIAL STAFF

Editor-in-Chief

Jan Hermansson, Jan.Hermansson@pdworld.com

Assisting Editor-in-Chief

Anita do Rocio Hermansson,
Anita.Hermansson@pdworld.com

Editor Europe: Mikael Karlsson,
mikael.karlsson@pdworld.com

Editor North & Central America

Jim Parsons, jim.parsons@pdworld.com

Editor South America

Luiz Carlos Beraldo,
luizcarlosberaldo@gmail.com

Editor Recycling: David Ehrenstråle,
david@flaskborsten.se

Editor Asia Pacific: Barbara Grace,
barbara@cmma.org.au

Editor Russia & Eastern Europe

Andrei Bushmarin,
andrei.bushmarin@pdworld.com

Editor Africa

Kevin Mayhew,
designmp@africa.com

SALES OFFICES

International Sales Director

Germany/Austria/Switzerland/Liechtenstein
/Benelux/Finland/France/Spain/Portugal and Italy
Andrei Bushmarin
Phone: +7 921 949 27 81
E-mail: andrei.bushmarin@pdworld.com

Sweden, Norway & Denmark

Contact the Editorial Office
Phone: +46 (0)8 631 90 70, Fax: +46 (0)8 585 700 47
E-mail: info@pdworld.com

North & South America, UK & Ireland

Darren Dunay
Dunay Associates
P.O. Box 119, Westwood, NJ 07675, USA
Phone: +1 201 781 6133, Fax: +1 201 664 1829
E-Mail: darren.dunay@pdworld.com

Australia/New Zealand/Asia Pacific/Korea/Japan and rest of the world:

Contact PDI editorial office in Sweden.

Publisher

Jan Hermansson

The magazine PDI, Professional Demolition International is published five times per year with a worldwide circulation of 10000 copies. The annual airmail subscription rate is US\$ 45. All subscription correspondence should be directed to: The subscription department, SCOP AB, P.O. Box 786, SE-191 27 Sollentuna, Sweden. PDI is mailed by second class postage. ©Copyright SCOP AB 2000-2014

Cover photo: US Demolition Association's Executive Director Michael R. Taylor at the EDA Convention in Madrid in June, 2014. © EDA.

PDI Magazine is a member of the following associations:



CONTENTS

PD*i* • issue no. 4 July - August 2018 • Volume 18

REGULARS

Editorials

- 6 Greenhouse effect or not, something is very wrong
- What about the 'Millennials'?
- 8 New season

Business

- 8 Keltbray Group announces extension of its lifting services
- New distributor for Allu Germany
- New Date Set for M&T EXPO in Brazil
- 10 Peter Jordansson to re-join Volvo Construction Equipment
- Doosan Bobcat opens backhoe loader plant in India
- Keltbray to expand its specialist asbestos management services division
- Keltbray Group introduces unique 'asbestos in soils' training course
- 12 Rubblemaster continues global expansion at Hillhead
- Dynaset website now in German
- Keestrack R3e receives 'Red Dot Award' 2018
- Hilti innovations garner Red Dot Design Awards

Jobsite Report

- 48 Three bridges demolished in 48h
- Tyrolit special projects team celebrates 20 years of success
- 52 Unusual application for Kemroc cutter wheel
- GSSI partner with Panasonic to provide a tough solution
- 53 Serious London cutting from Dymatec
- Eibenstock drill helps to renovate Kazanski Cathedral
- High frequency concrete cutting in the Hague
- 62 Customers' testimonials endorse ShearCore Fortress attachments
- Husqvarna air scrubbers and HTC Duratig grinders clean the way

News

- 14 Growth sees Maximus recruitment
- EDA organizes a think tank
- RM 90GO! comes with the latest technology
- Keestrack enters Japanese market
- 36 Dymatec launches P20W
- Brokk introduces next generation 'SmartConcept'
- 41 New internet shop and breaker models from Idromeccanica
- 47 Brokk introduces four new next generation demolition robots
- 50 Wall saw attachment for demolition robots launched
- Brokk introduces a new line of hydraulic breakers
- Ecomondo and Key Energy trade shows to tackle North African environmental issues



- 55 Rockster Crusher R1100S
- Demarec establishes DemaShop
- Alfred Landl, stepping down but not resigning
- 57 Quick coupler systems and attachments from Liebherr
- 58 Brand new HX130 LCR crawler excavator
- 60 Innovation and surprises from Ausa at Internat
- 64 State of the art dry coring approved for nuclear power plant use
- Epiroc develop bio chisel paste
- 66 MB-S18 screening bucket
- Perkins introduces 14 new Stage V engines
- Traxx Construction Products
- 68 Electrifying premiere for Keestrack
- Komatsu Europe launches WA100M-8
- New PC80MR-5 midi excavator
- 70 Kleemann boosting Danish recycling productivity
- Komatsu Europe introduces the PC228USLC-11

Reports

- 16-18 IACDS delegation visit to the world's largest concrete cutting company
- 38-39 Tokyo embraces clean and quiet disassembling
- 72 Hydraram: 25 years of demolition evolution
- Adamas runs an 'open house' for its Benelux customers

Shows

- 74 Innovations key to success of bauma CTT Russia 2018

Special Features

- 20-34 Crash course on excavator attachments
- 26-30 Powerful and compact trends

FRD
FURUKAWA



WHERE EXPERIENCE COUNTS

Greenhouse effect or not, something is very wrong

Hello folks! Hope you all had a nice summer break if you live in the northern half of the world. If you are located in the south, you are now experiencing wintertime, but I guess many of you still had the chance to take some days off. Europe has in many places experienced the warmest summer for decades. Stockholm, where I reside, has experienced a 'real' summer since mid-May, and the country as a whole has been experiencing the warmest and driest summer in 100 years. This has meant we have had huge problems with wild fires this year, with many millions of Euros of damage being done.

Sweden has, luckily, been receiving a lot of support from other countries within the European Union. A large number of efficient water bombing airplanes has been sent to Sweden, with all the fires being extinguished. We have had some badly needed rain, even though this has been barely enough, and it is still very warm for the time of year.

In other corners of the world, people are suffering from tremendous storms and floods that are destroying everything in its way. I ask myself, 'what is going on? Is this normal? Has this happened before over the time?' If we are to believe Trump, he thinks what we are seeing is cyclic and has happened before. I don't think so, although I know nothing about weather changes and green house effects.

Things are not right with our weather. I love warm weather and sun, but when it is a question of our planet's well-being I prefer normal, somewhat wet, and a little bit chilly Swedish summer. We, the global community, are already very much behind the schedule to break the development of the greenhouse effect. We are thus seeing more and more signs of that our world is changing rapidly, and this is not just that the ice is melting at the poles. When species of birds that normally roost in the south of Europe suddenly show up here in Sweden, and when giant squid show up in the water outside Gothenburg, far from their natural habitat in the seas around the coast of Africa, something is wrong.

I would love it that someone could guarantee that this is cyclic, and what is happening is completely normal. But I believe that is not going to happen. However, there are positive results from the greenhouse effect. For us living near the Poles, we have gained a warmer climate, more sun and more pleasant winters. Our construction firms now actually can work outside through the whole winter, and that is quite rare! The last winter was very positive as the Swedish construction market boomed, and to some extent, still is.

I'll leave the greenhouse effect for a while: before writing this column, I went to a meeting organised by the German-Swedish Chamber of Commerce concerning the upcoming Bauma next year. In the press meeting, Messe München GmbH, chairman and CEO, Klaus Dittrich, and VDMA chairman and CEO of GEDA-Dechentreiter, Johann Sailer attended. The two informed the attendees that things looked very promising for the 36th German trade show. The interest among the world's manufacturers is higher than ever, with a long waiting list of companies that would like to exhibit.

To make room for even more exhibitors the organiser, Messe München, has again managed to extend the exhibition area with two new halls, and more outside

exhibition area, resulting in some 9,000m² of exhibition space being added. The total exhibition area will be 614,000m², with some 600,000 visitors being expected over the seven exhibition days. Starting with next issue of PDi Magazine, we will begin to publish previews of Bauma 2019 up until our large and extended show issue, PDi 2-2019.

Jan Hermansson
Editor-in-Chief
jan.hermansson@pdworld.com



WHAT ABOUT THE 'MILLENNIALS'?

The Millennials: sat in front of their phones, tablets or on demand TV, more worried about the latest reality TV star's next Instagram post than they are about embarking on a career or, to start with, just finding themselves a job. A fair assessment, you might say, but is our stereotyping of a whole generation one of the reasons that we are struggling to find the future workforce that will ensure our businesses and industries continue to run for many more years to come?

I was inspired to write this column when I saw a presentation by David Perkins of Hilti at the CSDA Convention in Maui, and then again, at the IACDS Tokyo Conference by Erin O'Brien of the CSDA. It really got me thinking and doing research when I returned back to the UK. Whatever is a Millennial some will be asking? In the UK, it's basically anyone who was born between 1980 and 2000. In 2016 they accounted for 16.8M people: a quarter of the whole population and the largest proportion of the workforce. The USA uses a slightly different measure; that of anyone born between 1982 and 2004, making up around 75M of the population. We can be confident that these figures are reflected, if not completely mirrored, around the world.

Perhaps, we as an industry should be the first to look beyond the millennial label. After all, construction, and all of its specialisms, is probably one of the most typecast industries on the planet. Some will tell you it's for the unskilled or the unintelligent: I find this assessment laughable and bordering on the offensive. The sector we work in requires intelligence and skill, yet we are labelled with the opposite stereotype. How then can we be willing to label a whole generation in one way?

Research shows that the millennial generation is not the selfish, self-absorbed group that the stereotype suggests. Surveys have found that they are looking for substance and meaning in their work, and

not just the biggest pay packet. They care about a company's brand and reputation, wanting to feel what they are doing is contributing to something worthwhile. They are also willing to work; a large proportion work in excess of 40h a week with many undertaking two jobs. Of course, technology plays a big part in their life, with 91% being regular internet users; but is that something employers should fear or is it something we need to embrace?

Many in our industry can point out that many of this generation are often apt to quit and leave. Maybe some do, but the biggest reasons given for leaving a job are that there are no opportunities to advance, little growth in pay, excessive hours, lack of teamwork and a lack of flexibility. Thus we have a stereotype of a generation, and a stereotype of an industry, but neither match what's happening in reality.

If we are to find new blood for our businesses, we are going to have to dip into the pool of talent from the millennial generation, and look beyond the stereotyping. In order to do so, we have to sell our industry better and, maybe, look at some of those factors that are important to those surveyed, such as flexibility and the opportunity to progress. Also, we have to be willing to bestow the importance of construction on society and the economy. Without us, there are no roads, no schools, no homes, no hospitals etc. If a young worker is looking for meaning in what they do, what could offer that better than being part of an industry that is creating the future?

So please let me know what are your experiences of Millennials, and has this made you think about your recruitment policy for the future. It's a subject that is going to come up again and again, and will definitely be revisited by the IACDS at future conventions.

Julie White, President of IACDS
juliewhite@d-drill.co.uk



SUPERABRASIVE

DIAMOND TOOLS AND EQUIPMENT



**EQUIPMENT AND TOOLS
YOU CAN COUNT ON.
EVERY TIME.**

LAVINA

**GRINDERS & VACUUMS
FOR PROJECTS OF ALL SIZES.**

Superabrasive has been manufacturing high quality diamond tools since 1987. We offer complete solutions for nearly any concrete application, from coating removal and prep to daily maintenance.

Proudly made in Bulgaria.



www.superabrasive.com

Words from the EDA President

NEW SEASON

I trust that after your well-deserved holidays, we will all return once again to our primary activities with the energy that a leading industry like ours requires. Having left behind the difficult years we have gone through, we can now focus on the present, and the immediate future, with a renewed sense of optimism resulting from the increasing volume of work. The European Demolition Association, EDA, will of course be our meeting point and benchmark to face the continuous renewal that both our customers and the environment require.

With regard to the 'new season', there are numerous events on our agenda. These include the workshop that EDA is preparing, together with the Swedish association, BFB, on demolition and decontamination on 28 September, which will be held within the framework of the DEMCON fair, in Stockholm (Sweden). A think tank is being organised by the EDA in conjunction with the Committee for European Construction Equipment, CECE, on equipment for demolition, to be held on 10 October in Brussels (Belgium).

In addition, and as per usual, the EDA will participate in external events including the World Demolition Summit held on 7 – 8 November in Dublin (Ireland), and 2019 BAUMA, where we will organise numerous activities, thereby reinforcing the important role played by the EDA. Finally, there will be a study tour in Japan. Preparations are advancing at a good pace, and as soon

as the details are finalised, the precise information will be disseminated so that those who wish may participate in this event may do so, with the event being scheduled for mid-2019.

My very best wishes to everybody and success in the new season.

About EDA

The EDA was founded in 1978 and is the leading platform for national demolition associations, demolition contractors and suppliers. The EDA has a strong focus on developments in Europe, which are of interest to the demolition industry.

info@europeandemolition.org
www.europeandemolition.org



Francisco Cobo, President of EDA,
European Demolition Association



Keltbray Group announces extension of its lifting services

Keltbray first established its lifting capability in 2010 to support Keltbray Group's many functions, specifically its demolition services. In line with the growth of the company's services, lifting services has continued to expand its capability. This means that the team of experienced lifting engineers now have access to over €1.12m worth of specialist lifting equipment, enabling them from their dedicated East London base in Silvertown to support major developments across the capital.

The company has already completed work for a handful of external clients, including maintenance and restoration specialists De-Pest. This contract involved removal of a historic bridge at St. Katharine Docks in order that the bridge could be refurbished off site. Due to access constraints, Keltbray carried out the lifting operations using a barge mounted crane, delivering the project ahead of time and on budget.

Keltbray has developed lifting expertise over a number of years by carrying out

complex projects for its internal businesses at major developments. These include projects at Earls Court, Battersea Power Station and London Bridge. These are now provided as a stand-alone service, or as an integrated part of other Keltbray services.

"As a specialist contractor, we employ a direct delivery model; using our own people and plant. We also have access to our own engineering consultancy, Wentworth House Partnership, for design expertise. This enables us to manage lifting projects with a higher risk profile from start to finish, and give our clients peace of mind that we've got their back, using solid plans and equipment tested and inspected by our accredited people. As a result we are well placed to provide a one stop shop to plan the works, as well as source the equipment and implement the lifting operations," explained Keltbray Group's lifting operations manager, who is spearheading the new service.



New distributor for Allu Germany

Allu's world leading Transformer and Processor series' needs no introduction; but now German customers will be able to benefit from even greater levels of support through its new distributor, Atlas von der Wehl GmbH.

Based in Lauenbrück, 50km south of Hamburg, Atlas von der Wehl GmbH. is considered to be an industry leader when it comes to earthmoving equipment for sale and rent, being the dealers for Atlas (cranes and excavators) and Doosan amongst others. Founded over fifty years ago, the company now employs over 230 people at four locations, providing high quality construction equipment solutions to assist its diverse customer base.

Of the appointment of Atlas von der Wehl GmbH., Marjut Lindroos, group marketing manager Allu states: "We are sure that the combination of Allu equipment and global aftermarket support, together with the local knowledge and industry expertise of Atlas von der Wehl GmbH., will enable Allu customers to benefit from a winning combination."

Although only recently appointed as a distributor of Allu equipment, training and product familiarisation has already begun. Atlas von der Wehl GmbH sales and service personnel have undertaken application and service programmes in both Germany and Finland.

New Date Set for M&T EXPO in Brazil

M&T Expo 2018 in Brazil, originally scheduled for June, was postponed due to the country's political strife that resulted in widespread transportation strikes that jeopardized logistics and presented potential risks to the safety of attendees. Tensions have eased, allowing the international trade fair of equipment for construction and mining equipment to be held November 26- 29, 2018, at the São Paulo Exhibition & Convention Center. Hours for the show will be 1pm-8 pm November 26-28, and 9am-4pm on November 29

"We have spared no effort in bringing together all that is required to still hold the event in 2018 at same location and with the same conditions," explains Monica Araujo, Managing Director at Messe München do Brasil Feiras Ltda. Afonso Mamede, President of Sobratema (the Brazilian Association of Technology for Construction and Mining), adds "We are looking forward to M&T Expo and are very delighted to meet the needs of our exhibitors and visitors."

www.mtexpo.com.br



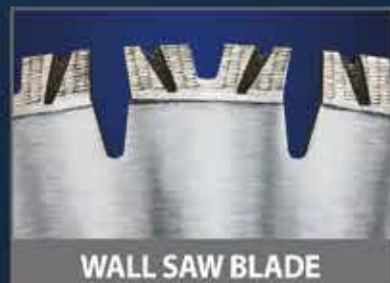
ZENESIS®

WORLD'S MOST ADVANCED
PATTERNED DIAMOND TECHNOLOGY

New
edition R



FLOOR SAW BLADE



WALL SAW BLADE



CORE BIT





Peter Jordansson to re-join Volvo Construction Equipment

Effective from the 1 October 2018, Peter Jordansson will take up the position of senior vice president responsible for purchasing and supplier management as part of the executive management team (EMT), reporting to Volvo chief executive president, Melker Jernberg. With more than 20 years of experience in logistics and transport, Peter has worked with some of the biggest names in Sweden including Volvo Group, Scania and most recently, steel company SSAB.

Peter's new role will mark his return to Volvo CE after previously holding management positions at the company. In his new post, he will promote the needs of the supply chain in the company's strategic discussions. Volvo CE president Melker Jernberg comments, "I am really pleased to welcome Peter to the executive management team. Peter has had strong track records of managing the full supply chain in different industries, from operational level to strategic level. The supply chain is a critical part of our overall business and we see a need for the purchasing function to get more focus by being directly represented in Volvo CE's strategic discussions."

Peter's first logistics position came in 1994, at AQ Segerström & Svensson, based in the same town as Volvo CE's manufacturing facilities in Eskilstuna. In 2003 Peter joined Scania in production planning, before moving into logistics at the company's engine assembly facility in Södertälje. He then spent two years working for Volvo CE at the Arvika facility, before re-joining Scania. Prior to re-joining Volvo CE, Peter's most recent roles have been at SSAB, where he has been leading its supply chain, purchasing and sourcing development. Peter will be based at Volvo CE's Gothenburg headquarters when he takes up his position later this year.



Doosan Bobcat opens backhoe loader plant in India

Doosan Bobcat has opened a new backhoe loader plant in India, thus marking its entrance into one of the world's three largest markets for compact construction equipment industry. This was marked when on 4 June 2018, Doosan Bobcat president and chief executive, Scott Park, visited the new backhoe loader plant in India, where he inspected progress. The new site is 80,000 m², has a factory floor area of 15,000 m² and is capable of producing 8,000 machines a year.

Doosan Bobcat has entered the backhoe loader market in a bid to expand its emerging market portfolio with the aim of exploring mid and long term growth. India's compact equipment market is the third largest in the world after the US and China, with an estimated

worth of approximately €1T, with backhoe loader sales accounting for more than 80%. Since 2014, the Indian backhoe loader market has grown at an average annual rate of 9.7%.

By acquiring dormant facilities, Doosan Bobcat is able to dramatically shorten the period from preparation time to shipping time when compared to establishing an entirely new plant, with the first batch of backhoe loaders being available by the second half of 2019. Scott Park said of the development: "With government led infrastructure investment increasing in recent years, the compact market is growing rapidly in India, making it a highly attractive market. Our mid and long term goal, beginning with backhoe loaders, is to lead the Indian small construction machinery market."



Keltbray to expand its specialist asbestos management services division

Keltbray Environmental Solutions (KES) is set to expand its asbestos management services division to now include Wales and the South West. To support the expansion, Keltbray has opened a new office in Riverside Industrial Park in Pontypridd, Wales.

KES is a specialist division of Keltbray Group, providing asbestos and other hazardous waste management services across a wide range of sectors, including offices and schools, hospitals, defence, heritage, leisure, commercial and utilities projects. While providing services nationwide, these have traditionally been concentrated in the south east of England and the Midlands. This latest move means KES will be better placed to meet the increasing demand for asbestos management contracts in Wales and the south west of the country. In addition to the necessary HSE asbestos licence, KES is ISO accredited for quality, environmental and health and safety standards, with its own licensed transfer stations which are run to Environment Agency guidelines.

"We are really excited about this opportunity to expand our services and provide greater national coverage. This move will enable us to better support and develop the industrial side of the business that has great potential for growth. We have appointed Christian Jones to head up this new region. He has more than 20 years' worth of local asbestos management experience, and is one of only 14 people in the industry who is a Fellow of the Asbestos Removal Management Institute (ARMI)," explained KES commercial director, David Harrison.

Christian Jones has a long track record of raising the standards of the asbestos industry in the UK, being a member of the Asbestos Removal Contractors Association (ARCA) governing council, which he has been a member of for over 10 years. "In his capacity as Associate Member of the Institute of Demolition Engineers (IDE), we will also be looking to Christian to develop closer synergies with our demolition and decommissioning services," concluded David Harrison.

KELTBRAY GROUP introduces unique 'asbestos in soils' training course

Held at Keltbray's new training centre at Silvertown in East London, the company has announced it will be holding a training course on how to deal with asbestos in soils. The specially designed practical training area has been modelled on a typical brownfield site, meaning that attendees can test theoretical skills in practice, and carry out mock excavation exercises to assess and monitor for asbestos contaminants in soil.

The training course has been designed by Keltbray Remediation, a specialist division of Keltbray Group, which provides remediation solutions for brownfield sites, in partnership with the leading engineering, design, and environmental consultancy, Ramboll. The asbestos in soils module can be attended as a stand-alone one day module. It can also be attended in addition to Keltbray's one day, UKATA approved, 'non licensed work with asbestos' (category B) training course.

The asbestos in soils training course is targeted at contractors that operate in the areas of earth works, demolition, civils and housebuilding, as well as consultants that undertake intrusive works through site investigation. It is also said to be suitable for environmental health professionals from governmental agencies. "Dealing with asbestos in soils is an increasing challenge as we start to remediate brownfield sites that pre-date year 2000, when asbestos was widely used in the construction of industrial or residential buildings and refurbishments. The most hazardous forms of asbestos were used in fireproofing, insulation, pipe lagging and corrugated roofing sheets and other exterior cladding materials, and they were often just buried as part of demolition works before asbestos prohibition laws came into force," explained Keltbray Remediation managing director, Joe Jackson.

Every week approximately 20 tradespeople in the UK die from diseases caused by exposure to asbestos fibres. With experts predicting the UK's annual death rate from asbestos of around 5,000 (Health & Safety Executive Asbestos Danger) is set to soar in the next five years. "Asbestos is deadly if not handled correctly. As experts in the handling of asbestos containing materials, we are therefore pleased to launch this training facility to help highlight the dangers of asbestos in soils, and provide training to those who are likely to come into contact with these materials, so they know how to handle it," Joe continued.





VIDEO



DYNASET HPW-DUST

HIGH PRESSURE DUST SUPPRESSION

HYDRAULIC EQUIPMENT FOR MOBILE MACHINERY

GENERATORS
VARIABLE GENERATORS
WELDING GENERATORS
MAGNET GENERATORS
MAGNETS
INSTALLATION VALVES

POWER WASHERS
STREET WASHING UNITS
PIPE CLEANING UNITS
DUST SUPPRESSION
DRILLING FLUID PUMPS
FIRE FIGHTING SYSTEM

AIR COMPRESSORS
BIN WASHING SYSTEM
POWER BOOSTERS
POWER TAKE-OFF
VIBRAS
ETC.



Rubblemaster continues global expansion at Hillhead

"Twenty years ago, Rubblemaster introduced the technology of compact crushing to the UK, and demand for our machines is higher than ever," says Gerald Hanisch, chief executive, Rubblemaster. "We are the original manufacturers of compact crushing machines, and are still the best. When others were tentatively beginning to think about recycling construction and demolition by products, we developed an innovative machine and created the market for on-site recycling."

The confidence shown in its products explains why the company gave focus at Hillhead to the RM 70GO! 2.0, which was exhibited at the stand, and the RM 90GO! which impressed when put through its paces on the demonstration area. Interest in the RM 120GO!, Rubblemaster's biggest and newest machine, was also high despite it not being at the show.

"Over the years, we have stayed true to our core competencies of developing, manufacturing, selling and servicing crushers in the compact class, and this has served us well as we became the global market leaders in the area," says Gerald Hanisch. "Rubblemaster crushers have the best weight to size ratio worldwide, with the highest throughput capacity in each class, and are all controlled and operated in exactly the same way. We have spent the last 27 years perfecting our crushers, and our experience is seen in the excellent quality and reliability of the 3,050 sold. Our recent acquisition of Northern Ireland's screen manufacturer Maximus, means that the original manufacturer of compact crushing machines now has 300 employees

and 80 dealerships across 110 countries."

The partnership with Maximus will see Rubblemaster continue to expand beyond the recent joint development of the RM HS3500M, and intensify development in the areas of electrification for Maximus screeners and single source crushing. This will complement Rubblemaster's on-going innovation programme that has produced the quietest fleet in the industry, with average noise emissions of 110dB against the industry average of more than 115dB.

Highlighting the features of the product range, recently a RM 70GO! 2.0 was seen as the ideal solution for the space and environmental requirements, including that of noise, for the cramped Camden Market site in London. The machine took just five days to crush 4,000t of material at a construction site near the famous market, while staying within the inner-city noise parameters. The design elements within the RM 70GO! 2.0, such as its noise reducing engine compartment, engine mounting and optimised ventilation slots, make it one of the quietest impact crushers in the industry.

In addition to manufacturing high performance and versatile crushers, service and the Rubblemaster spirit are what the company claims set it apart from its competition. Since 1991, long term partnerships, and customer satisfaction have been given the highest priority. The company provides worldwide around the clock support, with the RM service centre providing all spares and parts needed for operating every type of Rubblemaster crusher and screen system available on the market.

Dynaset website now in German

Serving customers in multiple languages for many years, Dynaset's employees are able to deal with their customers' requirements in English, Finnish, German, French, Spanish, Russian, Chinese and Portuguese. The company has placed great store in creating new language versions of its website and technical documents, with the relevant language versions helping customers to understand the benefits of the company's innovative technology.

"Dynaset is already offering customer service in several languages and now, by

adding content with additional languages to the website, the company will provide even better customer experience. The content serves the needs of multiple customer segments and cooperation partners," says sales manager Anni Karppinen. "We released a German language version of our website to complement the current language selection. The website includes, for example, product descriptions, technical data, photos, videos, dealer locator, manuals, press releases and information about applications and carrier machinery."



Keestrack R3e receives 'Red Dot Award' 2018

After receiving its world premiere at Intermat in Paris, the new track mounted Keestrack R3e impact crusher unit has now officially been awarded with the international 'Red Dot Award' 2018 design prize. This award was in the industrial equipment, machines and automation category, being presented to the company in early July at the Red Dot

Award Gala in Essen, Germany. As well as its attractive design (which will characterise all future models in the new series of mineral processing technology), the designers have also included innovative ideas for operation and industrial safety in their development, as well as integrating multistage production steps.



HILTI INNOVATIONS GARNER RED DOT DESIGN AWARDS

Hilti took home awards for three products, and one product family, at this year's Red Dot Design Award competition. The company won a 'best in category' award, and also received additional honours for the latest generation of Hilti's brand icon, its red toolbox.

During the awards, the Hilti TE 50-AVR combihammer received a 'best of the best' award as the winner in its category, with the jury specifically citing the tool's high design quality and pioneering design. The tool, which provides improved performance at a lower weight than previous generations, also features an optimised slip clutch which provides added user safety. "The 'best of the best' award for the new combihammer is an affirmation of our design strategy which highlights design continuity, and reinforces both brand, and product identification, in addition to the actual use of the product,"

said Hilti's head of design, Stephan Niehaus.

The sixth generation of the Hilti toolbox also received a Red Dot Design Award. The well-known brand icon was redesigned as part of Hilti's efforts to revise its brand. It is equipped with additional functions such as a swivel handle, allowing two toolboxes to be easily carried in one hand, and a new interior which can be individually configured to hold various accessories.

Other Hilti products receiving Red Dot Awards include the family of cordless cutting tool, pipe crimper and punching tool. Although this product range is new for Hilti, the design nonetheless proved award winning to the jury, as did the TE 6-A36 cordless rotary hammer, which also received an award.

All the Red Dot Award submissions are gauged in terms of criteria including degree of innovation, ergonomics, functionality and formal quality.



PREMIUM DIAMOND TOOLS & MACHINES

MADE IN
GERMANY



KERN-DEUDIAM
Diamantwerkzeuge und Maschinen GmbH

Tel. +49 5257 507-0 Industriestraße 24
Fax +49 5257 507-40 33161 Hövelhof
kern-deudiam.de | info@kern-deudiam.de

The logo for ANTRAQUIP CORP, with the name in large red letters and 'CORP' in smaller red letters to the right.

Experienced, Innovative & Reliable

HIGH PERFORMANCE, DELIVERED

CONCRETE GRINDER ATTACHMENTS

A photograph showing a yellow excavator equipped with a concrete grinder attachment, working on a concrete surface.

DIAMOND & CARBIDE DEMOLITION SAWS

A photograph showing a yellow excavator equipped with a large circular demolition saw attachment, cutting through a concrete structure.

A close-up photograph of a large, red, circular demolition saw head with multiple carbide teeth. The text 'Proudly Made in the USA' is written vertically along the right side of the saw head.

INTERMAT VILLEPINTE, PARIS - BOOTH 5A E081

WWW.ANTRAQUIP.NET

A circular seal featuring a stylized American flag and the text 'MADE IN THE USA' and 'ANTRAQUIP'.

INFO@ANTRAQUIP.NET

TEL: +1 301.665.1165

THE ULTIMATE DEMOLITION CONTRACTOR'S ATTACHMENT

CONTROLLED DEMOLITION • REINFORCED CONCRETE CUTTING • MAKING THE AQ DEMOLITION SERIES THE ULTIMATE ATTACHMENT

Growth sees Maximus recruitment

This spring Maximus, the Northern Irish manufacturer of mobile screening units based in Coalisland, County Tyrone, acquired a new majority shareholder, Rubble Master. The Austrian crusher and screener manufacturer has invested in the company, thereby creating new employment opportunities in the region. "We decided to invest in Maximus because Maximus products are

a good match for our RM crushers and our expansion plans," says Rubble Master founder and CEO Gerald Hanisch. "We know that the region has the expertise and specialists that we need to continue our growth, and further cement our position as a driver of innovation and world market leader in mobile crushing and recycling."



EDA organizes a think tank to consider 'Equipment for demolition'

The European Demolition Association, EDA, in partnership with the Committee for European Construction Equipment, CECE, has organised a think tank titled, 'Equipment for demolition'. The think tank is the third such EDA endeavour, following on from 'Recycling and end of life construction products', which was held in 2014, and the 2016, 'The next ten years'. The new think tank will meet on 11 October, 2018, in Brussels, Belgium, and will

be open to all from the industry. The event will consist of two different workshops and will take place at the headquarters of the Belgium Confederation of Demolition and Dismantling Works, CASO. Registration is free, but to attend, interested parties are advised to complete the form which may be reached at the following link:

www.europeandemolition.org/thinktank/october2018

RM 90GO! comes with the latest technology

Austrian company Halbeisen & Prast KG feels it has the right equipment for every job, with the innovative features of its RM 90go! crusher making its work easier, and saving money. Günter Prast, managing director of the earthworks team at the company, explains some of the latest features on its new crusher, "Using the new pivoting refeeding belt, we can produce two different fractions simultaneously. But there are loads of other details that

have been optimised and save a lot of time during a working day. For example, the crusher housing now has just two bolts instead of ten. These innovative features make the RM crushers intuitive and easy to use. Downtime is reduced to an absolute minimum. The high quality standard during manufacturing also pays off when you want to exchange your RM crusher for the next generation: A Rubble Master retains its value and is easy to resell."



Keestrack enters Japanese market

In March 2018, Keestrack, the international specialist manufacturer of mobile processing technology, signed a dealership agreement with JCE Co, Ltd. based in Kanagawa near Tokyo, Japan. JCE will now distribute Keestrack's entire range of tracked mobile crushers and screens, as well as provides full customer service through its nationwide aftersales network in Japan.

"The Japanese mineral recycling industry is one of the most advanced sectors worldwide, attaining recycling rates of over 90% in almost all typical construction waste categories," says Michael Brookshaw, global distributor manager for the Belgium based Keestrack Group. "Technical and environmental standards are very high, resulting in a very competitive market situation for both local and global manufacturers. Keestrack has now entered the Japanese market with its full range of mobile processing technologies – world leading in terms of modern hybrid drive concepts – and through our new distributor JCE, we will be able to provide professional and nationwide service and support for all relevant sectors."

Founded in 1984, JCE is today headquartered in Kanagawa, near Tokyo, has 33 employees, and a turnover of €7.8m. In 2017 the company became part of Hiroshima Hino Motors, Japan's largest distributor for medium and heavy duty trucks. JCE's offering for the recycling industries consists of mobile processing plants and attachments for organic and mineral waste, including shredders, crushers, screens and stackers for both highly mobile urban applications, and semi stationary production at stock yards or recycling centres.

The company's product portfolio covers Japanese brands and leading international manufacturers. As exclusive distributor, JCE substantially invests in reliable aftersales structures, including wear and spare parts, nationwide support and a comprehensive rental fleet.



SCREENING BUCKETS

VIPER METAL

EFFICIENT
VERSATILE
EASY TO USE
LIGHT WEIGHT
MAXIMUM VOLUME

🏠 www.vipermetal.fi ✉ info@vipermetal.fi ☎ +358 400 911884



CRUSHING BUCKETS



*EDIA BLADE, EXTREME PREMIUM,
GRANITE AND CONCRETE*



RT-SPLIT SEGMENT FOR WELDING AND BRAZING



RT-TURBO SEGMENT FOR WELDING AND BRAZING



EDIA

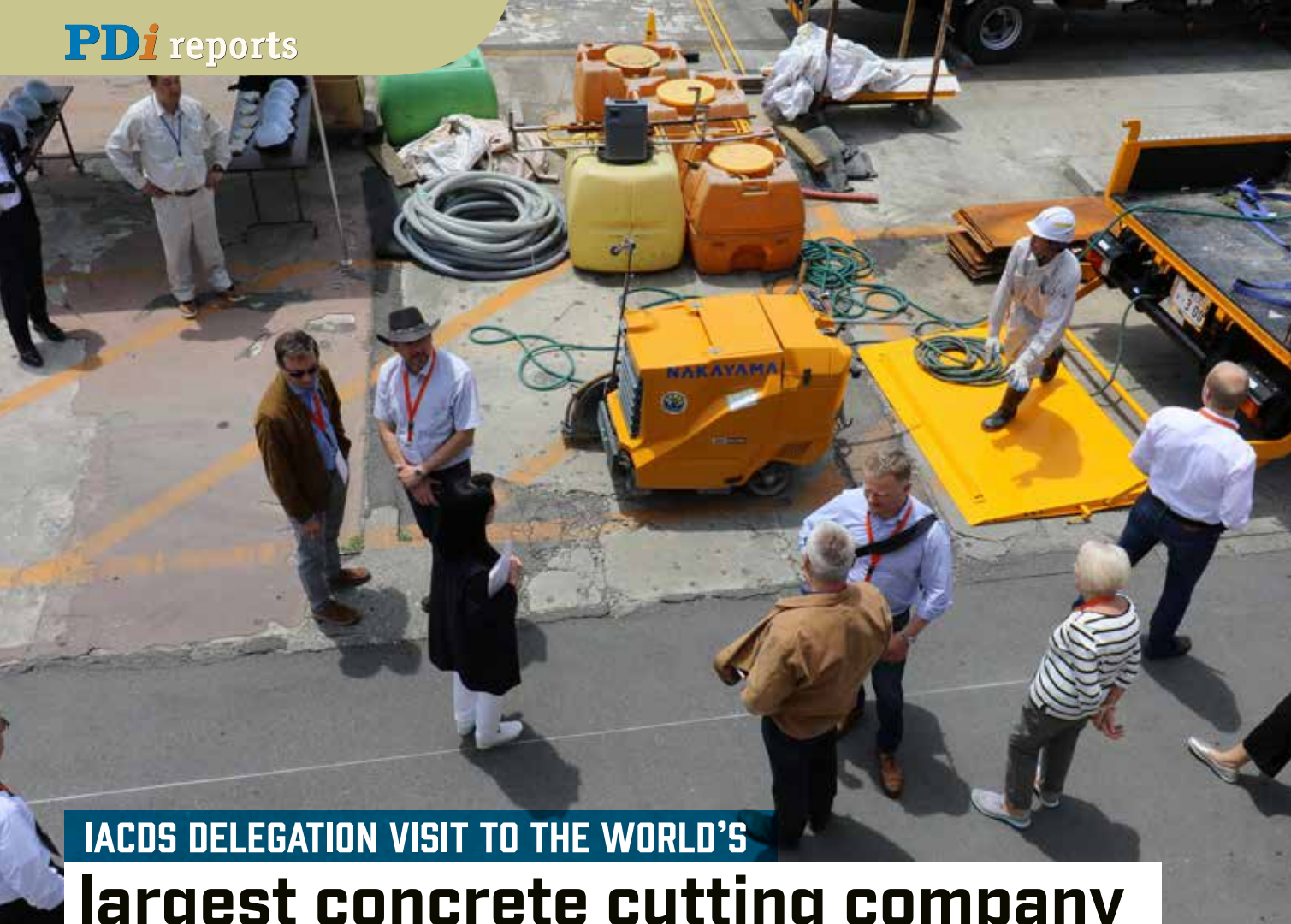
EVOLUTION OF DIAMOND IMPREGNATION ARRAY



Professional Diamond Solution since 1981
Hard Working, Sustainable Innovation, Dedicated Service

HSD Europe GmbH

Mergenthalerallee 77, 65760 Eschborn, Germany • Tel. +49(0)6196 79 00 • Fax. +49(0)6196 790 15 • Email. info@hsdeu.com



IACDS DELEGATION VISIT TO THE WORLD'S largest concrete cutting company

A feature of the IACDS annual convention in Japan this year, participants were presented with the opportunity to visit the offices of the world's largest concrete sawing and drilling contractor, Dai-ichi Cutter Kogyo K.K.

With its head office located in Chigasaki in the Kanagawa prefecture, not far from Tokyo, the opportunity to visit the Dai-ichi Cutter Kogyo K.K. offices was taken up by around 20 IACDS delegates on 21 May, 2018. This provided the opportunity to visit the headquarters of the world's largest concrete sawing and drilling company, enjoy the good weather, and gain an awe inspiring view of Mount Fuji.

The visit to the company started with a short presentation on Dai-ichi, with a welcome by company president, Mr. Takahashi. During the presentation it was explained that Dai-ichi, founded in 1967, turned over €86M during 2017, is now listed on the Tokyo stock exchange, and is expected to grow in 2018. As well as its head office, the company now has 10 branches located across Japan, plus four subsidiaries, with 360 people now employed, with an additional 250 sub-contractors also doing work on behalf of the company.

Although Dai-ichi Cutter today works mainly working in Japan, it does also undertake water jetting jobs occasionally overseas, which has seen the company undertake special projects in Kuwait and Singapore, with an increasing focus on undertaking projects overseas. To undertake its work, the company has assembled an impressive fleet of equipment. This consists of some 171 flat saws, 150 core drilling systems, 38 wall saws, 62 wire saws, 18 grooving machines, 14 water jet pumps as well as assorted stationary and mobile slurry recycling plants. Additionally a large number of diamond tools, as well as other miscellaneous machinery and equipment are owned by the company.

Wide spectrum of services

The main services that Dai-ichi provides is flat, wall and wire sawing, core drilling, grooving and also conventional construction work. It also undertakes water jetting

and hydrodemolition services demolishing concrete, cutting steel and industrial cleaning, as well as under water services with water jets. Dai-ichi clients' are a cross section of general construction and infrastructural companies, from a variety of business areas including process, cement, nuclear, airports, railway, bridges, dams and quays. A major area for Dai-ichi, due to the high frequency of earthquakes in Japan, is to reinforce buildings thereby making them more resistant to earthquake damage. About 35% of the work the company undertakes is concrete cutting, 35% grooving, 20% water jetting and hydrodemolition, and 10% general construction and other associated tasks.

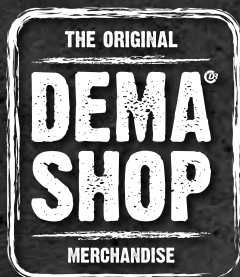
Slurry regulation

Mr. Watanabe from Dai-ichi explained that flat sawing on roads and bridges is a very common service undertaken by the company, but for some years, Japan has strengthened its concrete slurry handling regulations. When carrying out flat sawing large volumes of water are used, with, previously, the water not being contained or handled properly. Now regulations have been tightened, with all resulting slurry having to be collected and recycled. In order to do this, Dai-ichi uses specially designed flat saws with a vacuum. The slurry is then contained and recycled in either mobile recycling units, or brought to the nearest Dai-ichi location for processing by a stationary slurry recycling unit.

The new regulations were introduced in 2012, and in 2014 Dai-ichi built a stationary recycling plant for slurry at a cost around €515,000. The stationary plant itself contains two large tanks where the slurry is col-



Some of the Dai-ichi staff and the visitors from IACDS.



FIND MORE ORIGINAL
DEMAREC MERCHANDISE AT
WWW.DEMAREC.SHOP



**THE NEW DCC;
COMBINATION OF TECHNOLOGY
AND MARKET KNOWLEDGE**



Extremely fast cycle time. 25% more power
gives 25% more closing force on the tip.



In the end... It's only about the right tool

DEMAREC. De Hork 32, 5431 NS Cuijk, the Netherlands. Tel.: +31 (0) 485 442300, info@demarec.com
DEMAREC Deutschland. Im Rohnweiher 14, D-53797 Lohmar, Germany. Tel.: +49 2205 92027 0, info@demarec-deutschland.de
KINSHOFER UK. 4 Milton Industrial Court, Horsfield Way, Bredbury, Stockport, Cheshire, SK6 2TA. Tel.: +44 (0)161 406 7046, sales@kinshofer.co.uk
KINSHOFER USA. 6420 Inducon Drive - Suite G, Sanborn, NY, 14132. Tel. +1 (716) 731 4333, sales-usa@kinshofer.com



The filtering process where water is separated from the mud.



Mud from the recycled slurry to be reused as construction material.



lected, which is then transported to another tank where two different types of substances are added. The process then separates the solid or mud content in the slurry and is filtered. The mud is used as construction material and the clean water is reused in concrete cutting. Today Dai-ichi has three stationary recycling plants and 15 mobile slurry recycling units, with another stationary plant currently being constructed.

Aging work force

Dai-ichi, together with the Japanese concrete cutting

industry as whole, now faces some serious challenges in the coming years. There are many vacancies for staff in the industry, but as the workforce ages and retires, there are very few trained younger people to replace them. "We have a big need for competent staff, and it is very hard to find it in Japan these days. We need to educate young people for work in the concrete cutting industry," says Mr. Watanabe. Thus Japan is facing the same problems as many other nations, with it being hard to attract young people to the industry. To deal with this human resource problem, Dai-ichi has increased

cooperation with other concrete cutting companies as a temporary solution, with another possible option being to bring in workers from other nearby countries and train them in Japan.

The group from IACDS had an interesting and enlightening day at Dai-ichi Cutter. The delegates would like to express its thanks for the hospitality received, and to Mr. Takahashi and his team for taking time out from their busy days to host the visit, and explain the unique challenges facing the company.

www.daiichi-cutter.co.jp

Dai-ichi Cutter head office and plant in Chigasaki.



Clean water.



Mr. Takahashi, president of Dai-ichi Cutter.





TM

ARIX Generation 3

Advanced multi-layered diamond segments
with precise distribution of diamond particles

THREE GENERATIONS BEYOND

TURN YOUR DREAMS INTO REALITY

Meet the third innovation of the original
diamond array technology that changed
the industry in 2005. ARIX G3, superior
performance you can see and feel.



SHINHAN DIAMOND

36B-10L Namdong Industrial Complex, 610-9, Namchon-dong, Namdong-gu, Incheon, 405-100, Korea
TEL. +82.32.820.3801 | FAX. +82.32.810.3456 | E-mail. terry@shinhandia.co.kr



PD*i*'s

CRASH COURSE on excavator attachments

*The headway made by the demolition and recycling industry over the last decades is simply staggering. From a wrecking ball, and hard to control implosions, the industry has progressed to safe and precise demolition techniques, involving powerful and sophisticated excavator attachments. PD*i*'s Andrei Bushmarin presents a 'crash course' on the latest innovations in the attachment business.*

Crushers, shears, multiprocessors, pulverisers and demolition grabs

Crushers, shears, multiprocessors, pulverisers and demolition grabs are the most powerful weapon in every specialist contractor's arsenal. Efficient and versatile, they can be applied to a wide range of tasks including primary and secondary demolition, debris recycling and scrap metal processing.

BIG news from Trevi Benne

Italian attachment specialist Trevi Benne, has designed a 'monster of a crusher' for one of its European customers. Weighing in at 27t, the HC 250 is the biggest model developed by the company for primary demolition tasks. Taking around four months of development work, the finished crusher boasts a jaw opening of 3.1m, height of 5m and a tip force of 545t at 450bar, and will be fitted on a customised Liebherr demolition excavator. When

delivering to the customer, Trevi Benne had to custom build a 6t metal cage to comply with road transporta-

tion regulations. The project is its final stage, and more details will shortly be available.

www.trevibenne.it



NPK adds new rotating pulveriser

Japan based NPK has extended its line-up of rotating pulverisers with the addition of the V250R model. Designed for 24 to 35t carriers, the new 2.75t tool has a maximum crushing force of 1,330kN, being ideally suited to diverse applications including demolition of walls, floors and light steel structures as well as secondary crushing jobs. The V250R is 360° rotatable, and comes with an NPK integrated booster, which turns on automatically whenever the jaws meet





shears at Labounty & Genesis. The manufacturing is led by Jim Campbell, who headed the manufacturing division at Genesis for 12 years. Before that, he had run the reconditioning department at Labounty.

ShearCore now manufactures robust and powerful shears designed with ease of maintenance in mind. The mobile shear series includes seven models ranging in weight from 2.5 to 9.6t. Here are a few testimonials attesting to the quality and performance of the Fortress shears. "With our old shear, we could only cut 50 to 70t a day. With the Fortress we're doing 100t a day." Daniel Robertson, Robertson Metal Recycling in North Dakota. "We replaced one of the competitor's larger shears with a Fortress shear that was one size smaller than the competitor's, and the Fortress outperformed it." Shane Durand, CEI in Alaska. "I have been carrying out maintenance and repairs on various demolition attachments for 20 years, and since we've started purchasing our Fortress shears and processors, we believe Fortress to be the highest quality demolition attachments on the market by far. They are very easy to maintain and very reliable." Bill Munday, Hughes Salvidge in the UK.

www.shearcore.com

Hydraram turns 25

and launches new series of fixed pulverisers

Hydraram, a Netherlands based supplier of demolition solutions, this year introduced the HFP-M series of fixed hydraulic pulverisers featuring an integrated magnet. Powered by a 24V battery, the magnet is activated by the excavator driver when needed, for instance, to collect rebar lying around the jobsite, or to load and move iron bars. The magnet is equipped with a quick release system that immediately drops the steel containing objects when the electrical function of the magnet is

switched off. The new series includes three models: the smaller 2.4t HFP-20VM fitting 20 to 30t excavators, the mid-range 3.2t HFP-25VM designed for 28 to 40t carriers, and the 3.85t HFP-32VM suitable for 35 to 52t machines. On 15 September, Hydraram celebrated its 25th anniversary, and PDi sincerely congratulates the Dutch company on this milestone event.

www.hydraram.com

Demarec unveils three new series

Netherlands based manufacturer of premium quality demolition and recycling attachments, Demarec, introduced three new series in 2018. One is the DCC range of two cylinder concrete crushers designed for the demolition of the thickest reinforced concrete structures, fitting both standard and high reach demolition machines. The series ranges from the 1.9t DCC-25 model, providing the closing force of 100t on the tip up, to the DCC-75 weighing 6.5t boasting the force of 200t. The tools have two pivot points, ensuring that more torque is transferred to the jaws for maximum closing force. A combination of the newly developed DemaPower 2.0 cylinder (featuring four oil chambers) and optimised jaw geometry, results in 25% higher closing power on the tip. Next is the DMS multishear, fitting mid-size excavators (7 to 9t), and is an all-round specialist thanks

resistance. Using a relatively low oil flow, the pressure intensifier system reduces cycle times and increases crushing force. The booster also allows for a compact body design and easy maintenance while reducing the attachment's overall weight.

www.npk.co.uk

ShearCore – a new

'shear' force in the attachment business

Located in Wisconsin, US, ShearCore was founded by Bruce Bacon, a legendary figure in the scrap recycling and demolition industries. Bruce began in the early '90s working as a sales manager for Roy Labounty. When Roy sold Labounty, Bruce Bacon first co-founded Genesis Attachments, and then went on to create ShearCore after his partners at Genesis decided to sell the company. ShearCore manufactures the 'Fortress' line of attachments, with mobile shears being the company's core competence. Bruce managed to assemble a strong team around him, with Fortress mobile shears being designed by Ross Christenson, who is responsible for a number of innovations over the past 20 years while designing





to a mechanical changing system, and a wide array of jaws, including jaws for cutting reinforced concrete (DMS-05-C), scrap (DMS-05-S) and cables (DMS-05-V). All jaws are fitted with replaceable wear parts. Thirdly is the new DXS line of shears featuring what is said to be an industry leading power to weight ratio, jaw opening size, cycle times and hydraulic efficiency. The line's debuting model is the DXS-50 shears designed for scrap processing, tyre recycling and demolition. This will soon be followed by the DXS-40 model.

"We have designed the DXS series to enhance contractors' productivity and ROI," says Marcel Vening, Demarec's managing director. "Traditionally, more power means a larger cylinder, which results in a bigger, heavier shear and often a larger machine. The DXS-50 has the same sized cylinder as shears, but with 25% more power, allowing our customers to achieve higher performance without investing in larger carriers. This saves them money, while improving their ROI with the attachment's production boosting qualities." Demarec's new DemaPower 2.0 cylinder technology gives the DXS-50 the same power as shears two sizes larger, enabling the DXS Series to exert up to 25% more power from a smaller attachment. The 4.5t DXS-50 boasts a closing force of 1,203t; the upcoming DXS-40 will have a closing force of some 900t. The DXS-50 is suited for 25 to 35t carriers when boom mounted, and 32 to 50t carriers when stick mounted.

www.demarec.com

Green Attachments enlarges product assortment

Established in Lahti, Finland as a supplier of demolition tools for specialist contractors, Green Attachments



Oy has enjoyed steady growth in the past couple of years, with a rapidly expanding product portfolio. The company's 'Yellow MC' series of multiprocessors encompasses 11 models designed for 4 to 130t excavators. The multiprocessors come complete with different sets of jaws for a wide range of demolition and recycling tasks. The range of rotating pulverisers is suitable for secondary demolition applications as well as primary demolition of reinforced concrete structures, with the entire line being constructed from Hardox 400. The pulverisers feature a speed valve for increased performance, and reversed cylinder for protection of the cylinder rod. A pressure relief valve is installed to protect the motor. The range includes 10 models for 7 to 120t carriers.

www.greenattachments.com

Stanley LaBounty extends mobile pulveriser line

US based Stanley LaBounty has expanded its mobile hydraulic pulveriser line with the introduction of the MHP 350 model. This is engineered for high efficiency secondary demolition and concrete recycling. The brand new design is configured for puck up, crushing and separation of rebar from concrete. The pulveriser boasts a large jaw opening to process the thickest concrete, with the lower jaw angle being optimised to pick up concrete slabs with ease. Four way indexable blades provide four usable cutting edges. Other highlights include a speed valve, and bolt on lower plates for quick maintenance which are field replaceable with swift lock teeth.

www.stanleyinfrastructure.com



Rammer enjoys a crushing success in the UK

Bradley Demolition, a specialist contractor in the north west of England, recently took delivery of a Rammer rotating pulveriser for a project in York. The 2.9t, 2.4m RVP29R pulveriser was fitted on a Hitachi ZX300-6 excavator using a Lehnhoff hydraulic quick coupler. Built from wear resistant steel, the RVP29R features a reinforced jaw with an opening of 900mm for high productivity and durability. A single tooth top plate allows for better penetration when undertaking primary demolition, with a patented speed valve enabling faster cycle times, with the added benefit of protecting the



hydraulic circuit from any pressure peaks. With oil consumption of 200 to 220l per/m, oil temperature is kept to a minimum. The 550mm wide, 850mm deep jaws ensure that large chunks of masonry are processed with ease. Bradley Demolition is reported to be extremely pleased with this new acquisition made through Rammer's UK dealer Murray Plant.

www.rammer.com

Daemo adds three new ranges

In 2018, Korean attachment manufacturer Daemo, added three new ranges to its product portfolio. The DRP series of pulverisers, suitable for 13 to 32t excavators, now offers 130% greater crushing power when compared to its predecessors. With easy to replace bolt on teeth effectively protecting the body, the new DMP multiprocessors boast an effective quick change function (DMP-Q). Built from Hardox 400, the attachments feature Daemo's patented pin guide system, which enables four types of jaws to be mounted and replaced within five minutes. Also new from Daemo is the DMQ series of hydraulic quick couplers that lock the attachment tightly in place using a triple safety system, enabling the changing tools from the cab.

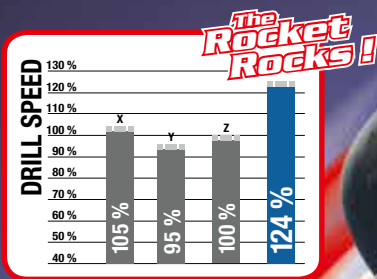
www.daemo.co.kr



The Rocket Rocks !

*We are proud to introduce
the Ultimate Rocket* Drill line.*

- ***Up to 30 % faster***
(best drilling speed for core drilling tools)



- ***Competitive price***
- ***Made in Belgium***

Why "Rocket drill" ?
This nickname comes from one of our customers !
Try the Rocket, you will understand !

****Only by CARBODIAM***

CARBODIAM s.a.

Rue Général Mellier 27 B - 1495 Tilley - BELGIUM - +32 (0)71 870 640

Contact : sales@carbodiam.com



Cat Work Tools expands multiprocessor line

Caterpillar has expanded its multiprocessor range with the addition of three new models: the MP332, MP345 and MP365. The attachments' construction allows pairing a basic housing with up to six jaw sets for maximum versatility onsite, while a new jaw locking system and speed booster valve contribute to high productivity. The housings incorporate a heavy duty 360° rotator for positioning the multiprocessor at an optimum angle at any given moment. When the jaws meet resistance, the integral hydraulic booster valve automatically kicks in. Depending on the jaw set being used, closing force is up to 19% higher compared to the previous series.

www.cat.com



Indeco tools receive major makeover

Based in Bari, Italy, Indeco has overhauled its IMP series of multiprocessors, upgrading them with a more rugged body, and increased jaw opening. The jaw configuration has been improved to simplify the assemble/disassemble procedure, and provide a better grip on material. The IFP and IRP ranges of fixed and rotating pulverisers now feature interchangeable teeth on the movable jaw (welded on a bolt-on plate and secured with latches) for optimal penetration of the material being demolished. Additionally, the IMG line of demolition and sorting grabs is now available in five different versions: the IMG S sorting jaws, the IMG D demolition and sorting jaws, the IMG 3 + 2 material handling jaws, the IMG L loading jaws and the IMG T timber jaws.

www.indeco.it



Arden drops a bomb of a sorting grab on US military base

French company Arden Equipment, delivered recently a S6002B sorting grab – the biggest in its range - to the US military base in Cádiz, Spain. The operation was coordinated by Newimar S.A., a construction company servicing the naval facility, and Caterpillar distributor in Spain, Finanzauto, that supplied a Cat 374F L excavator as a base machine. The S6002B boasts an opening of 3m, two rotational motors and three hydraulic cylinders, and has a capacity of 2,200l, making it ideal for its tasks at the base, including transporting large rocks when making new dykes in the harbour and beach cleaning. Arden Equipment grabs are made of abrasion resistant steel, with enough resilience to absorb shocks resulting from the impact of materials. A wave shaped design further contributes to shock dampening, and enables easy maintenance of the attachment.

www.arden-equipment.com



SOLUTIONS FOR LEADERS

MADE IN GERMANY

BAIER
Elektro-
werkzeuge



NEW IN THE MARKET!

2-gear dry coring in concrete with rebar up to 10"

ULTIMATE COMPETITOR!

Dry coring in reinforced concrete, up to 6" diameter.

Maschinenfabrik OTTO BAIER GmbH - Heckenwiesen 26 - 71679 Asperg - Germany
Tel. +49-7141-30 32-0 - info@baier-tools.com

www.baier-tools.com

The Arden Jet technology now available on your demolition shears, concrete pulverisers and sorting grabs.



The first patented water spraying system integrated in your demolition attachment to destroy dust.



Crushing and screening buckets

Crushing and screening buckets are becoming increasingly popular with specialist contractors all over the world. Until a few years ago, this industry was dominated by Italian manufacturers, with MB Crusher and Simex setting the pace. Today, however, they find their leadership increasingly challenged by players from different countries, most notably Finland.

MultaVEX expands screening bucket range

Based in western Finland near Seinäjoki, MultaVEX Oy specialises in the manufacture and supply of screening buckets. The company, established in 1986, shifted its focus in 2005 to mobile recycling. Manufacturing jointly with another Finnish company, Vemitek Oy, MultaVEX buckets are marketed under the brand name Vibra. This year the range was expanded with the addition of the 40-50 and 50-70 models. As may be inferred from the names, the new buckets are intended for excavators weighing 40 to 50t and 50 to 70t respectively. Compared to the previous Vibra models, the new buckets are made entirely from Hardox and boast an increased screening area.

www.multavex.com



New Cobra bucket from Cernos

Cernos Oy is another Finnish manufacturer, recently extending its Cobra range of screening buckets with the brand new XS900 model. Designed specifically for mini and compact machines the new addition to the Cobra range weighs only 330kg, with its light construction enabling work with tiltrotators and easy transportation. The XS900 is engineered for screening, selecting, mixing and light crushing tasks. A high pressure dust binding system for construction, mining and material handling applications is also available for this model. This year, the Finnish company will celebrate the 25th anniversary of the launch of a first Cobra screening bucket in 1993.

www.cernos.fi

Ajutech extends Vipermetal range

Family owned Finnish company Ajutech Oy, manufactures and markets the 'Vipermetal' range of crusher and screening attachments, recently adding a new screening bucket designed for high speed crushing, mixing and stabilising of soft materials. This model features a 'big block' type of rotor, which soon will be available on



most Vipermetal screening buckets. Another significant development is a new gearbox, which synchronises rotation of the drums, allowing a smaller grain size at the output, as well as making the crushing effect more stable.

www.vipermetal.fi

JCB crusher buckets built to last

The JCB crusher bucket range features excavator mounted models, compatible with 4 to 70t carrier machines, as well as skid steers or compact tracked loaders, from 2.8t to models in excess of 6t. Twin crushing jaws are securely locked in place with a wedge section rather than bolts, while Hardox wear parts ensure quality. This offers increased reliability when crushing large rocks, and minimises any potential damage, with 180° rotatable jaws further reducing downtime. Featuring a 30h greasing interval, and only two grease points, the crusher buckets come complete with a gear pump designed for reliability. Through its use, less demand is placed on the carrier in terms of hydraulic oil flow, requires fewer revolutions per/m from the machine, and puts less heat into the hydraulic system. In-cab hydraulic controls enable one man operation, while control and balance devices minimise vibrations. JCB crusher buckets have twin flywheels on each side, which stores energy and results in a sustained crushing action. In addition, the buckets boast a double jaw action moving in four planes to deliver more efficient crushing.

www.jcb.com





**DISCOVER
THE BULL**

bmg2200.blastrac.nl

NEW RIDE-ON FLOOR GRINDER FOR LARGE SURFACES



GRINDERS | FOR GRINDING AND POLISHING LARGE FLOORS & OTHER SURFACES



SCARIFIERS | TO LEVEL LARGE SURFACES OR REMOVE THICK COATINGS



SHOT BLASTERS | TO CLEAN & RETEXTURE CONCRETE OR ASPHALT



FLOOR STRIPPERS | TO REMOVE OLD FLOOR COVERINGS



Award winning crusher buckets from Xcentric
Spanish company, Grado Ceras Sistemas, manufactures the 'Xcentric' range of excavator attachments, has added crusher and screening buckets to its product offering. Xcentric's crusher buckets are engineered for high performance operations with long maintenance intervals (lubrication every 200h etc). This is made possible thanks to patent pending technology comprising of a high inertia powertrain, circular jaw movement and an anti-congestion plate. The latter development prevents large pieces from getting stuck in

the bucket's jaws, with particle size adjustment being both easy and intuitive. The crushing jaws are placed in crossed position, which gives the bucket the capability to process wet material. The Xcentric crusher buckets were recognised with the Accésit Prize at the SMOPYC exhibition in 2017.

www.xcentricripper.com

Simex launches smallest screening bucket

The smallest member of Simex's range of screening buckets, the VSE 10 model, is renowned for its versatility and

productivity. Designed for 8 to 13t excavators, the VSE 10 boasts an option of changing output size without any downtime. Additionally, the shape of its rhomboid shaped elements with different sized disks, enables it to achieve high productivity levels. To increase the bucket's versatility even further, the Italian manufacturer offers tools specially designed for different screening applications, making the attachment suitable for non-demolition jobs including landscaping and materials recycling.

www.simex.it



THE NEW FULL ELECTRIC

AVANT[®] e6

Feel the instant torque




- Zero emission
- Low noise
- Up to 6 hours of use with one charge
- 1 hour charging from 0 to 100%

1 HOUR

CHARGING

100%

LI-ION TECHNOLOGY

2-6 HOURS

OPERATING

Your perfect demolition partner

Avant Tecno Oy
+358 3 347 8800
www.avanttecno.com

Durable Performance



Increase the capabilities of your concrete cutting and demolition toolbox.

Operate a full range of Pentruder High Frequency equipment simply by connecting the same Pentpak, remote control, motor, and cables to a wall saw, a wire saw or a heavy duty core drill.

All Pentruder equipment is Made in Sweden. We produce precision parts in-house, from the best materials, in state of the art production machines.

With over 35 years of experience from designing concrete cutting equipment, we know how to build high performance, durable systems.

Visit our website for more information and contact details to our distributors:
www.pentruder.com

Or check out our facebook page:
www.facebook.com/pentruder

or Instagram: [pentruder_official](https://www.instagram.com/pentruder_official)

Pentruder[®]
CONCRETE CUTTING SYSTEMS

Designed and manufactured by:
Tractive AB | Gjutargatan 54 | 78170 Borlänge | Sweden
Tel: +46 (0)243 221155 | E-mail: info@tractive.se
www.pentruder.com



Drum cutters/Rockwheels

Drum cutters are another example of an excavator attachment that has come to the forefront of the demolition industry in the recent years. The feature setting drum cutters, or rockwheels, apart from other demolition tools is their versatility. Demolition, grinding, trench cutting, profiling, descaling are just a few of tasks that a drum cutter is capable of dealing with.



Rokla's flagship G series

German based Rokla GmbH 'Rockwheel' drum cutters have already become synonymous with this type of excavator attachments. Rokla's highly successful G-series ('G' standing for gearbox drive) includes the G40, G50, G60, and G125 models being suitable for excavators in the 35 to 125t category. The drum cutters boast a rugged design, and a twin motor solution for optimum weight distribution. The range's bestselling model, G60, has been developed for 50 to 65t carriers, with its in house developed double motor technology and gearbox making it one of the most powerful cutting drums available on the market. An efficient water spray system, together with a special safety valve, also effectively protects both the attachment and the carrier. The smaller G5 and G5twin drums are designed to work with compact 3 to 12t excavators, featuring twin motor technology and a 2:1 gearbox transmission, generating very high torque. When specified for demolition applications, they come equipped with a heavy duty Hardox plate for cutting through steel rebar.

www.rockwheel.com

The master of all trades from MB

Italian based MB, used Intermat to unveil its brand new MB-R500 drum cutter designed to turn mini excavators and mini loaders into milling factories, being engineered to grind particularly resistant and tough materials, such as fragmented rock, although capable of working on soft materials such as asphalt. The MB-R500, the smallest model in MB's drum cutter range, weighs 300kg, has a replaceable cutting head of 500mm, and is compatible with 3 to 12t excavators and 3 to 8t skid steers and backhoe loaders. Like other MB-R models, it comes with a full or low set drumhead kit, which allows users to change the number of peaks depending on the material being grinded. The cutter body rotation kit allows operation rotation directly from the cab without stopping trenching work, whilst the cutting depth adjustment kit makes grinding edges and levelling possible. A nebuliser kit and drum cover kit reduce dust emissions, enabling operations in confined and enclosed areas such as tunnels. Furthermore, the temperature reduction kit lowers the oil temperature during operation without affecting the drum's performance.

www.mbcruiser.com



Simex strengthens its compact range

Simex, has added two compact variants to its drum cutter range. The TF 100 fits 2.5 to 4t and the TF 50 1.2 to 4t mini excavators respectively, making up the compact end of Simex's range of ten models. Featuring an innovative milling system incorporating a central chain, the new drums leave no areas untouched, effectively cutting trunks and roots, making them suitable

for forestry applications. The drums are handy for the excavation of small trenches, creating manholes or water conduits, laying down telephone and electrical lines. Thanks to low noise levels, the TF 50 and TF 100 can also be used indoors for milling of concrete walls, profiling of horizontal and vertical surfaces and removing plaster.

www.simex.it



A TOOL FOR EVERY JOB



That's what our job's about. Designing and making the perfect hydraulic tools for any application, and then making them available to users all over the world. We also have to make sure they stay efficient over time. Whatever job you have in hand, you can bet your life we're already working on that for you.



 **INDECO**
A TOOL FOR EVERY JOB



Ripper teeth

A 'ripper tooth' is a relatively new type of excavator attachment, which has proved ideal in such diverse applications as quarry excavation, tunnel cutting, underwater demolition and slag recycling.

Xcentric launches 'Mining Series' at SMOPYC

Xcentric used the SMOPYC exhibition to showcase the 'Mining Series' of ripper teeth designed for tough mining applications. The new series is based on the company's proven technology, with all crucial elements being strengthened to provide a greater impact at a lower

frequency, thus increasing tool performances in hard rock environments. The models unveiled at SMOPYC were the XR42, XR52 and XR82, which were followed by the XR32 and XR122 that were developed and launched shortly after the show.

www.xcentricripper.com

Orange peel grabs

Orange peel grabs, aka cactus grabs, remain an indispensable tool for material handling and recycling applications.

Bulkload of news from Cat

The new GSV520 and GSV520 GC orange peel grapples from Cat feature redesigned loading tines and vertical cylinders that facilitate material swing, ensuring more efficient bulk material handling. The new grapples, purpose built for Cat MH3022, MH3024, and MH3026 wheeled material handlers, are available in a five tine shell configuration, both closed and semi closed. The models are suited to handling a wide range of materials, including shredded scrap, being ideal for solid waste recycling and material transfer stations. Compared with their predecessors, the GSV520 and GSV520 GC have lower operating weights, optimising performance and fuel savings. The grapples are made from high grade, impact resistant steel in order to protect such vulnerable areas as hydraulic cylinders, and for greater durability, hardened pins and lubricated bushings are used on all pivot points. Also new are the GSH420 and GSH520 orange peel grapples, which have been specifically designed for handling long structural beams and car bodies, rocks at construction sites, and waste at recycling plants. The grapples feature horizontal placement of the cylinders for effective material penetration and bulk material handling. Available in four tine and five tine shell configurations, the GSH420 and GSH520 boast a redesigned rotation system, with the new grapples being designed to work with the Cat MH3022, MH3024, and MH3026 material handlers.

www.cat.com





CC - THE NEW COMBI CUTTER LINE

**INSPIRING ATTACHMENTS'
INNOVATION SINCE 1963**



Quick couplers

Today quick couplers, or quick hitches, are an integral part of any excavator set up. Enabling quick changeover of attachments on a job site, they significantly speed up the working process, reducing machinery operation and ownership costs. The quick coupler segment is one of the most competitive in the attachment business, with new products reaching the market every year.



BPH adds Proquick couplers to its range

BPH Attachments is an established supplier of work tools throughout the UK and Ireland, being the sole importer of Prodem demolition attachments. One of the latest additions to the Prodem range is the innovative Proquick hydraulic quick coupler, which allows operators to change attachments within just 15s from the safety of the cab, and is able to pick up any standard bucket or attachment without any adaptations. The oil flow in the connecting elements of the system is optimised in the flow channel, achieving 830l, which means the device is suitable for excavators up to 240t in size. Designed with safety in mind, the quick hitch features a double locking system, which mechanically locks both the front and rear pins, preventing the accidental release of the attachment. A fully automatic protective cover on the carrier and on the attachment ensure better protection against dirt, with the covers only being open when the attachment and quick coupler combine. Other products in the Prodem range include hydraulic hammers, static and rotating pulverisers, selector grabs, shears, multiprocessors and clamshell grabs.

www.bph-uk.com

'Auto skeleton coupler' from UEDA Industries

Japanese manufacturing company, UEDA Industries, core expertise is crusher and screening buckets. One of its latest products is the so called 'auto skeleton coupler'. Featuring an eccentric shaft and motor, this coupler generates vibration when attached to a standard skeleton bucket. Currently the range includes three models: the KS-70, KS-120 and KS-200, fitting 5 to 26t excavators.

www.uedaturb.co.jp



Hydraulic breakers

The most basic and widespread of excavator attachments, hydraulic breakers (or hammers) are still the bestselling item in manufacturers' catalogues.



Idromeccanica strengthens breaker range and launches webshop

Idromeccanica Italiana has added to its breaker range with the addition of three new models. The IMI 28HP and IMI 38HP, fitting 4 to 10t carriers, are available in closed, silenced and underwater versions. The IMI 120M model is suitable for 14 to 22t machines, and features an automatic greasing device making it capable of adjusting the working pressure and number of blows to optimise its performance. This breaker also comes in silenced and underwater configurations. Another model from Idromeccanica is the IMI 140 R that fits 19 to 25t excavators, and is designed for heavy duty demolition work.

www.idromeccanica.com

Plate compactors

An increasing number of attachment suppliers have added plate compactors to their ranges. Designed to reduce the size of various materials through compaction, plate compactors find use in the construction, recycling and agricultural industries.

Pladdet diversifies into plate compactors

Netherlands based Pladdet, renowned as an excavator modifier and attachment specialist, but best known for its high quality demolition and sorting grabs, has added plate compactors to its extensive array. The range's flagship PCP-3 model fits 9 to 18t machines, weighs 450kg, and has an operating pressure of 150bar. The compactor has two operating modes: pile driving and soil compaction. It features a valve system regulating both oil flow and pressure so the excavator cannot overload the compactor, which also helps prevent damage by pressure peaks in the hydraulic system, and

New hand held breaker from Maruzen

Maruzen Kogyo, the Japanese manufacturer of hand held and rig mounted hydraulic tools, has extended its range by adding the new BH23K32EV model. In terms of power, the new breaker is a step up from the proven BH23K model. The BH23K32EV comes equipped with an anti-vibration handle, and in house developed anti-bouncing system. This effectively dampens the chisel's bouncing, reducing the stress on the user, resulting in a safer and more comfortable operation. The breaker can be plugged into any power take off port available, for example, on a mini excavator, otherwise, the machine can be powered by the 45kg UH070 compact hydraulic power pack.

www.maruzenkogyo.co.jp



incorrectly configured excavator hydraulics. The PCP-3 has a round hole pattern, making it possible to rotate the top plate when needed.

www.pladdet.biz



PRO

OKADA AIYON CORPORATION
supplies a variety of attachments mounted on
excavators and has been an innovator in the field
for many years all over the world.



www.okada-aiyon.com

3-1-18, Kikage-dori, Minami-ku, Osaka 552-0022, Japan Tel: +81-66-6376-1268 Fax: +81-66-6376-1916 Email: sales@aiyon.co.jp

AU TOUR DU BETON

INNOVATION | CREATION | MADE IN FRANCE

Concrete machines with a french touch!

✉ contact@autourdubeton.com

🌐 www.autourdubeton.com



Shroud



Single head grinder



Wet/dry floor saw

FOLLOW US ON:

 Au TOUR DU BÉTON  Au TOUR DU BÉTON  Au TOUR DU BÉTON  ATDB



DYMATEC LAUNCHES P20W

Dymatec, the leading manufacturer and provider of specialist products for the diamond drilling and concrete cutting industries, has launched a new and improved version of its bestselling P20 diamond tracksaw blade, the P20W. The brand new P20W is still said to be the fastest cutting tracksaw blade on the market, but now lasts significantly longer. Designed exclusively by Dymatec in response to customer demand, the P20W is now one of the leading tracksaw blades available to diamond drilling and concrete cutting contractors.

Jeremy Newton, managing director of Dymatec, said of the latest development: "Dymatec's new P20W is an exciting new addition to our range of high quality diamond drilling and cutting consumables. The P20 has held the title of the bestselling tracksaw blade in the UK in recent years, and we are delighted to now also offer an improved version to deliver even better results for customers. Blades are one of our most popular lines and we are constantly looking at ways to improve the performance of our products. With the P20W we have ensured it continues to be the fastest cutting blade on the market, and our de-sign changes mean it now lasts even longer. Plus, the P20W is available at the same price as the P20, and we expect this product to be in high demand."

The P20W is available in a range of diameters up to and including 2,200mm and varying thicknesses, being available to purchase now. Dymatec has been supplying the diamond drilling and sawing industry for over 20 years from its headquarters in Bedfordshire, England. As diamond drilling and sawing specialists, Dymatec provides only the highest quality products for ultimate performance delivering precise, effective and impressive results. Dymatec has extensive experience working with specialist diamond drilling companies both in the UK and internationally.



Brokk introduces next generation 'SmartConcept' for demolition robot range

Following the recent launch of four new demolition robots, Brokk has now introduced the 'SmartConcept', a package of technological features that offer significant improvements in power management, reliability, maintainability, and ergonomics.

The 'SmartConcept' consists of three areas of new technology: 'SmartPower', 'SmartDesign' and 'SmartRemote', delivering a leap forward in performance and uptime.

SmartPower

Now available on all but two members of the Brokk range, this development combines power management software with custom designed hardware to maximize the hydraulic power output of a given motor size while boosting reliability. For example, the power generated in the B260, the company's former flagship 3.5t model, was a constant 24kW. The next generation unit, the B280 with SmartPower, improves the output to just below 30kW. The newly launched B300, with a new electric motor and SmartPower, boasts 36kW of power, meaning that the robot can accommodate a larger class of hammer on essentially the same size carrier.

The integrated power management software also automatically monitors the system and adjusts the motor speed to prevailing temperature conditions. This means that the machines can operate continuously even in the harshest, hottest environments. In addition to the power management features, SmartPower includes completely redesigned electrical systems with 70% fewer cables, and a reduction in connection points from 170 to about 50, with hardened components specifically designed to withstand the rigors of vibration and heat generated in demolition robots.

SmartDesign

The new Brokk models include a number of design

improvements put in place to extend the life of the machines, and improve the operators' daily maintenance routines. All grease points are accessible from the outside without removing any covers. LED headlights have special protections built in. Machine covers are formed steel, and hydraulic hoses are easily accessible for replacement. Other practical design touches are included meaning that all Brokk machines can rotate 360°, and can also operate 'over the back' and work unencumbered.

SmartRemote

Over forty years of experience in the design of remote controlled demolition machines have led to leading edge ergonomic remote control boxes. Brokk's approach uses a wide adjustable belt to hold the remote control box comfortably around the operator's waist. This places the weight on the hips, and away from the upper back, with intuitive controls enabling the operator to work the machine without having to spend time watching the display. Professional grade radio technology, with frequency hopping capability, has exceptional availability and a working range of up to 300m, also being quick to connect, resist interference, and highly reliable.

Overall, the new SmartConcept provides a host of tangible improvements to an extensive line up of demolition robots. It increases power from the same size powertrains, provides custom designed components for longer life, design improvements to enhance the operators' comfort and efficiency, and an ergonomic, intuitive control system that aids machine operation.

Green & Circular Economy

**6-9
November
2018**

Rimini Italy

ecomondo.com



22nd International trade fair
for material & energy
recovery and sustainable
development

ECOMONDO

THE GREEN TECHNOLOGIES EXPO

CONTEMPORARY WITH

KEY ENERGY

ORGANIZED BY

ITALIAN EXHIBITION GROUP
Providing the future

IN COLLABORATION WITH

ITTA
ITALIAN TRADE AGENCY

ICE - Italian Trade Commission
Trade Promotion Office of the Italian Embassy

For info and requests for free VIP CARDS please contact: mrkgestero.rn@iegexpo.it

For info and requests for exhibiting please contact: cristina.minghetti@iegexpo.it and/or silvia.gabellini@iegexpo.it

TOKYO EMBRACES CLEAN AND QUIET DISASSEMBLING

Japanese contractor, Taisei Corp., has introduced a safe and environmentally friendly demolition system that is considered by many as a turning point in the industry. The 'Taisei Ecological Reproduction System', or more simply known as the 'Tecorep' system, is ideal for locations where conventional demolition methods cannot be used such as ultra-high rise buildings. PDi Asia Editor Shinichiro Nakaba reports.

New solutions are continually developed to face new challenges in modern society. Big cities with high population densities have relied on the opening up of areas to create more space for its inhabitants, and now, with the skyscrapers getting older and becoming obsolete, the difficult task is to find ways to renovate areas with minimum impact on the neighbourhoods.

The Tecorep System

In Tokyo, the Taisei Corp. has introduced a safe and environment friendly demolition system for ultra-high rise buildings that is considered by many as a turning point in the industry. Places that cannot use conventional demolition techniques such as blasting to bring down buildings, will be able to use the demolition method called the 'Taisei Ecological Reproduction System', or simply known as 'Tecorep'.

The method consists of having the roof of a building covered and reinforcing the main floor structural points to disassemble from the top to the bottom. Sound proof panels are attached to the external part of the construction, not only to minimise usual disturbances such as sound pollution, but also to protect pedestrians from the risk of falling debris. "The main purpose is to complete the disassembling without being noticed, quietly, in the most imperceptible way possible. Our idea is to make the people in the surrounding areas question themselves as to what had just happened when they face an open space instead of a building they used to see every day," says Mr. Hideki Ichihara, productivity promotion department of architecture and engineering division manager, Taisei Corporation.

Since the disassembling activities are undertaken under a roof, weather conditions do not affect operations, thereby increasing productivity. The system also allows reducing the shielding material by half, with the 'closed' nature of the work ensuring noise levels can be lowered by 17dB to 23 dB when compared to conventional demolition methods. Additionally, any dust that in ordinary circumstances would reach a distance of 300m, is reduced by 90%.

Another surprising benefit of Tecorep is its power generation system that creates electricity which can be stored in batteries and used for multiple purposes. The energy is produced when lowering the disassembled material from the top floors to the ground. It is similar to a bicycle chain that generates light while pedalling, and has proved possible to produce 100kW of electricity per hour when a batch of 5t of components is lowered from 100m.

Disassembling work pace depends on the ceiling height; in 2011, the Otemachi Financial Center's 4m tall floor required six working days to be demolished, whereas in 2012, the Akasaka Prince Hotel needed 10 days to disassemble two floors of 6.4m height. Both projects required a team of approximately 100, consisting of 80 permanent workers for disassembling, and 20 technicians to deal with Tecorep.

Reducing cost

"The development of this technology is endless. We are always learning new things and looking out for a wide range of solutions," explains Mr. Ichihara. The greatest result of this constant development is the cost decrease. Tecorep at first aimed to conduct the disassembling with the building roof intact supported jacks in the construction columns. The present system introduces new and light roofing for the entire building, which reduces the pressure from the top, making it possible



to substitute the jacks for clips connecting the roofing to the construction columns and floor base.

The new equipment is simpler, faster to install, safer and allows a significant initial cost reduction, and was used on petro company JX Building close to Tokyo Station between 2016 and 2017. "The cost was reduced by 50%. The temporary jacks for big columns gave way to a system of clips connecting the new lighter roof, and the building permanent structure. The equipment is cheaper and easier to put in practice," says Mr. Ichihara. For the next stage, the Tecorep project team is studying

ways to install the clips only in the construction main points, and not in the entire building as they were used in the previous work, where it is estimated the cost will reduce by a 20%.

Safety

Making the roof lighter also helps to decrease the risk of accidents related to earthquake which are a very common occurrence in Japan. With a lighter roof, the building structure gains resistance making the working place and surrounding areas safer for workers and pedestrians. However, the latest development does not mean that the latest version is the best, as it has merely added to the range of services offered by Taisei. Older technology might be more suitable depending on different factors, such as the building design and construction area, which needs to be taken into account in a country where an earthquake might present a different cost benefit scenario when presented with new ideas and equipment.

For tall buildings in big cities

According to Mr. Ichihara, Tecorep System is financially viable for a building with more than 20 floors. For constructions with 10 floors, he believes the cost ends up 15% higher than conventional demolitions method, with the disassembly of more than 30 floors being marginally cheaper. "We have to prepare a new light roof for the entire building. This cost is divided by the floors we have to dissemble. The more we use the equipment in the same building, the cheaper it comes," he says. The cost must also include the risk of an accident caused by any residue that might fall from a 30th floor building for instance.

The distance between the building and other constructions, such as a road or access, is also important when analysing the cost benefits of any project, furthermore, the proximity of a sidewalk daily used by thousands of pedestrians might make the adoption of Tecorep almost mandatory. The technology is also recommended for use on redevelopment projects, but older buildings condemned to be demolished, might not possess the structural resistance to support this system. Information concerning the supporting ground, and how natural problems such as erosion affect stability etc, also has to be taken into account. Because of the wide range of factors to be assessed and accounted for, the effective use of the system is mainly limited to large cities with a high concentration of skyscrapers that are separated 100m or so. "In Japan, we use Tecorep in

Tokyo. Places outside big cities might have no need for this technology," believes Mr. Ichihara.

Taisei Corp. has now received enquiries from demolition companies in New York, Chicago, London, Singapore, Taipei and Kuala Lumpur concerning its system, however, exporting the technology is not an easy task. The project team needs access to a wide range of information such as plans for the building, disassembling machinery available, working standards and so forth. "In foreign countries, many things are unpredictable. We are not even sure about the existence of a construction plant. We can send engineers to study the scenario, but then the cost might jump," says Mr. Ichihara.

Difficulties

Developing Tecorep was a much bigger challenge than anyone can imagine, with the project team having to deal with something completely new. There was a need to understand a concept where things that seem to be simple, would not work, and deal with matters such as carbon dioxide emissions in a close environments and working without natural light. "We had to conduct the activities in a closed place, and people outside would not even perceive there was a disassembling operation conducted next to them," says Mr. Ichihara.

It took two years to put the ideas behind the system into practice, and since 2011 Tecorep has started four demolition projects using Tecorep, with the company finding that every building has its own unique challenges. Despite the extensive budgeting and cost-benefit analysis required before using the system, there is not a department responsible for Tecorep at Taisei Corporation. Four people heading different divisions study the clients' requirements, with planning a new project taking around a year. If the project is approved, another six months are required to finalise details before starting the disassembling.

Taisei Corp Tecorep team and the roof.



Mr. Hideki Ichihara.

**I DO NOT FEAR
CHALLENGES.
I DO WHAT
I WANT.**



MK Series

All shades of power,
one invincible **support.**



www.trevibenne.it

CELEBRATE WITH US
25 YEARS
OF LEGENDARY SERVICE



TOPTEC

SPEZIALMASCHINEN GMBH

TOPTEC Spezialmaschinen GmbH

REMOTE CONTROLLED DEMOLITION ROBOTS

Breithornstraße 10 · D-81825 München

E-mail: info@toptec-germany.de

Tel.: +49 (0) 89 - 42 72 05 50



www.toptec-germany.de



NEW INTERNET SHOP AND BREAKER MODELS FROM IDROMECCANICA

Idromeccanica Italiana S.r.l is a leading designer and manufacturer of attachment equipment, placing great store on being a customer oriented company, paying close attention to its customers' needs. This has seen the company launch a new e-commerce site as well as new breaker models.

Through its new online e-commerce development, shop.idromeccanica.com, Idromeccanica Italiana S.r.l now has a system for dealing with spare parts orders within 24h, seven days a week. This means that parts can be easily found and purchased at any time, from any place, with a simple click. All attachments and spare parts are well stocked, with highly trained sales and technical staff being at close hand to help customers with their requirements.

In addition to its e-commerce development, the company has launched new hydraulic breaker models. These are based on Idromeccanica's industry know-how, enabling the company to develop new and modern hydraulic breakers suitable for all the latest generation machines. Three new models have been added to the already numerous breakers in the IMI range, and includes two for machines from 4t to 10t, and one for machines from 14t to 22t.

The first two developments are the IMI 28HP and IMI 38HP, which feature specially developed components designed to obtain optimal functionality in any situation. These models are available in closed, silenced and dampened versions. The third development is the new and improved IMI 120M, which is suitable for any machine in the 14t to 22t range. This is able to operate with an automatic greasing device, which adjusts the pressure and blows, thereby ensuring that energy needed is transmitted efficiently and safely to carry out any job. This model, as well as other larger models, is further equipped with a silencer and is able to work underwater.

In addition to the new models, the company's IMI 140 R remains amongst its best sellers, being of a technologically advanced design with innovative solutions, being suitable for machines from 19t - 25t. This model is designed to deliver high performance particularly in the demolition of reinforced concrete, tunnelling work, and general construction.

DAZZINI MACCHINE



DIAMOND WIRE SAW MACHINES FOR CONTROLLED DEMOLITION



Dazzini Macchine – Viale Zaccagna,6 - 54031 CARRARA (MS) ITALY
Ph.+39 0 585 50226 – Fax +39 0 585 855874 – www.dazzinimacchine.com



Powerful and compact trends

Since the Intermat show earlier this year, the market has seen the launch of a large number of new wheel loader models. This special feature looks at some of them, with a particular emphasis on the new 'futuristic' Volvo compact wheel loaders.

Doosan launches New DL280-5 wheel loader

Doosan has launched the new DL280-5 wheel loader, designed for waste and recycling and general industrial applications, and is the latest development in the high performance Doosan wheel loader range, which comprises of 13 models ranging from 12t to 36t. The DL280-5 offers high performance and productivity as well as breakout force, tipping load and enhanced output. The front lift arm is powered by a closed centre hydraulic system with a 210 l/min axial piston pump. This system facilitates hydraulic performance, without producing excess capacity, thus saving on fuel, as well as extending the lifetime and reliability of vital components.

The DL280-5 features Z-bar kinematics with a simple lifting piston system designed for heavy duty applications. The breakout force of 145kN is combined with a constant bucket angle that is maintained throughout the range of movement. Bucket angles are also optimised in the travelling position, and at ground level. The lift arm benefits from an automatic load isolation system (LIS) – often called ride control – a standard feature which significantly improves the wheel loader's ride quality, and operator comfort, by ensuring a smooth ride over rough terrain, thereby reducing cycle times owing to improved vehicle stability when moving.

This also provides higher productivity and better fuel efficiency when performing load and carry applications, with the speed for automatic activation of the LIS system being fully adjustable.

The DL280-5 is powered by the proven 5.9 l Doosan DL06 diesel engine which provides high torque, performance and durability in this, and other models, in the Doosan range. It features a cooled exhaust gas recirculation (EGR), enhanced turbo charger technology and selective catalytic reduction technology (SCR) without having to use a diesel particulate filter (DPF). This feature is of particular interest to the waste and recycling

industries, with the DL06 engine being compliant with Stage IV/Tier 4 Final emission regulations.

Engine power is managed via three different working modes: 'Eco', 'Normal' and 'Power', to ensure the best torque and power to handle even the toughest work conditions, with the best fuel efficiency. As standard, an auto shut down reduces the idle time of the engine, to prevent the over consumption of fuel and wasted operating time. Operators can easily set the timing for this function via the LCD display in the cab. The operator environment is state of the art, with a modern and attractive work space offering generous headroom, with full seat movement providing plenty of leg room. A comfortable 'Grammer' comes as standard with vertical and horizontal suspension, heating and full adjustability.

Inside the cab, there is a new ergonomic joystick control with a progressive thumb wheel added for the auxiliary hydraulic line (3rd valve), often used to power high tip buckets and grapples commonly used in the waste and recycling industries. The progressive thumb wheel ensures that no additional lever is needed, providing the easiest combination of movements to manage the 3rd valve operations. FNR control has been relocated on the back of the joystick, via a three position rocker switch, which is more convenient and intuitive to use.

www.doosanequipment.eu

Komatsu Europe

launches two new compact wheel loaders

The new Komatsu WA100M-8 compact wheel loader is designed to enhance low cost operations with a powerful EU Stage IV engine, the proven Komatsu selective catalytic reduction (SCR) system, a new ergonomic design, a high level of standard specifications and an array of new options. This makes the loader ideal for construction sites, the recycling industry or for agricultural jobs. It comes with a hydraulic quick coupler, easy fork kinematic and a wide range of available attachments, making it a reliable and versatile tool. "The WA100M-8 is built on the strong base of the WA100M-7," says Sebastian Zienau, product manager at Komatsu Europe. "With its many new features and options, it opens up a whole new range of versatility. We're really looking forward to offering such a flexible machine to our customers."

Komatsu Europe has also launched the 'all-rounder', WA200-8 wheel loader, a utility performer for most worksites, with an attachment friendly quick coupler, an EU Stage IV engine, delivering up to 4% lower fuel consumption. Encompassing the recognised benefits of its predecessor, the Komatsu WA200-8 offers customers a combination of stability, breakout power and tractive





Diamond Tools and Equipment

GET MORE DONE

Industry leading performance.

Our power cutter solutions cut more than just concrete, they also make quick work of natural rock, hardscape, stone, dry stack, masonry, brick — pretty much any hard surface.

- *Square corners with no overcuts*
- *Precise openings of all shapes and sizes*
- *Egress window*
- *Deep plunge cuts (up to 25"*)*
- *Landscape and hardscape jobs*
- *Confined spaces*

**Available in gas, hydraulic
and pneumatic power**

CALL TO ORDER: 800.321.1240
EMAIL: orders@icsdiamondtools.com

*25" with the hydraulic or pneumatic powered cutters.

© 2017 ICS | Blount Inc. Pricing and specifications subject to change without notice.



ICSDIAMONDTOOLS.COM

effort. Engine acceleration has been increased with boom raising time improved for higher productivity and fuel savings.

A fourth generation hydrostatic transmission (HST) helps prolong brake life, while 'S-Mode' gives the operator maximum control in slippery conditions. "A focus for the development of the WA200-8 was to make it reliable on any type of surface and efficient in all applications," says Dadgar Shayan, product manager for wheel loaders. "And with its new high lift boom it can also load dump trucks with a side wall of over 4m, with outstanding stability for its class."

The operating weight of the WA200-8 ranges from 11,715kg to 12,015 kg, with its 'powerful and clean' Komatsu SAA4D107E-3 engine providing output of 94kW. Komatsu's diesel oxidation catalyst (KDOC), and other after treatment components, work together with the engine for improved efficiency and longer life. A new integrated elective catalytic reduction (SCR) system further reduces NOx emissions by 80% using AdBlue®. The engine's advanced electronic control system manages the air flow rate, fuel injection, combustion parameters and after treatment functions along with optimised low emission performance; advanced diagnostic capabilities are also provided.

An 'auto idle shutdown' system prevents unnecessary fuel consumption, as it automatically shuts the engine off, and applies the parking brake and hydraulic lock after a pre-set idle time limit. The redesigned digging bucket further improves penetration and is easier to fill, with a longer bucket bottom, a modified shape of the back and side walls, and a new design of the spill guard. The engine is designed to operate at high efficiency thanks to precise engine control, reduction of the exhaust gas recirculation (EGR) rate and an up-graded variable geometry turbocharger (VGT). A new engine controller and advanced injection timing help to increase productivity and also reduce fuel consumption, whatever the job.

www.komatsu.eu

Volvo CE unveils electric compact wheel loader concept

Volvo Construction Equipment (Volvo CE) recently unveiled its latest concept machine, known as the LX2, to industry specialists, policymakers, media and academics at its innovation summit. The electric compact wheel loader prototype delivers zero emissions, significantly lower noise levels, improved efficiency and reduced operational costs, when compared to its conventional counterparts.

Volvo Group's 4th innovation summit was held in Berlin, Germany, alongside autonomous and electromobility innovations from across the Volvo Group. The event focused on infrastructure and transport in cities of the future, as well as how new concepts can have a positive impact on society through increased transport efficiency, reduced environmental impact and improved traffic safety. At the summit, Volvo CE also demonstrated its EX2 fully electric compact excavator prototype, and presented the company's electric site research project.

The LX2 itself is a second generation prototype that is part of a research project, and is not commercially available. To make the machine electric, the combustion engine has been replaced with a lithium ion battery. This stores enough electric energy to operate the machine for eight hours in its most common applications, such as light infrastructure construction and landscaping. The LX2 also incorporates two dedicated electric motors, one for the drivetrain, and one for the hydraulics. Decoupling the subsystems has led to higher efficiency in both the systems and the entire machine.

"The LX2 is a revolutionary zero emissions prototype that offers improved efficiency, and lower operational costs, without compromising on machine performance," says Ulrich Faß, emerging technologies manager. "It incorporates the latest advanced chemistry battery technology. As it's electric, no particulate matter, nitrogen oxide or carbon dioxide are released into the environment. This, together with the fact that it

has extremely low noise levels, makes it ideal for use in cities and densely populated areas, as it can be used without disturbing people. This is the same for the EX2 100% electric compact excavator, therefore the machines would be ideally suited to working alongside each other."

Like the LX2, the EX2 is also part of a research project and is not commercially available. The prototype machine delivers zero emissions, 10 times higher efficiency, 10 times lower noise levels and reduced total cost of ownership when compared to its conventional counterparts. Volvo CE also presented its electric site research project which aims to transform the quarry and aggregates industry by reducing carbon emissions by up to 95% and total cost of ownership by up to 25%.

Volvo CE together with its customer Skanska Sweden, are currently testing the electric site solution in a real production environment for 10 weeks at Skanska's Vikan Kross quarry, near Gothenburg, Sweden. The system incorporates prototype electric and autonomous machines including the HX2 autonomous battery electric load carrier, the LX1 hybrid wheel loader and the EX1 cable connected excavator. These machines are part of a research project and are not commercially available.

"The electrification of construction equipment will produce cleaner, quieter and more efficient machines – this represents the future of our industry," concludes Patrik Lundblad, senior vice president of technology at Volvo CE. "We are currently in a period of exponential technology growth, and are at the start of a paradigm shift. At Volvo CE we are developing technologies connected to electro-mobility, automation and connectivity that will benefit our customers and the environment by contributing to increased machine performance, productivity, efficiency, safety and sustainability. Our future products and services will play an important part in building a sustainable society."

www.volvoce.com





ATTACHMENTS



DUST CONTROL UNITS



SANITATION EQUIPMENT



Complete supplier for the demolition, recycling and sanitation industry

WATER MANAGEMENT SYSTEMS



FLOOR STRIPPERS

WE ARE ALWAYS LOOKING FOR DEALERS:
WWW.DEHACO.NL

Dehaco B.V.

Kruisbaak 25
2165 AJ Lissersbroek (NL)

+31 (0)88 20 20 600

info@dehaco.nl



RDC-series



GET THE
RED
CRUSH!



Incredible cutting powers
combined with easily
replaceable wear parts

- Lowest fuel consumption and operational cost of cutting
- Unique cylinder positioning, guarantees maximum force during total cycle
- Built of high performance structural steel
- Unique pivot group and jaw alignment, longer lasting

Discover our products at www.rotar.com



Brokk introduces four new next generation **DEMOLITION ROBOTS**

Four new machine models were introduced at once, together with a proprietary Brokk hydraulic breaker range, and three new concrete crushers from Darda at Intermat this year. The four new machine models take the Brokk power to weight ratio to new heights enabled by the unique Brokk SmartPower™ technology.

The four new Brokk models comprise of the lightweight Brokk 170, the flexible Brokk 200, the all-around Brokk 300, and the 'green' Brokk 520D diesel machine, with the new Brokk 170 replacing the Brokk 160. This has involved taking the best attributes of the Brokk 160, and adding the full Brokk SmartConcept™; this consists of SmartPower™, SmartDesign™, and SmartRemote™. Using a 24kW SmartPower™ electric powertrain, enables the lightweight machine to deliver 15% more demolition power than its predecessor. It also comes equipped with the new Brokk BHB 205 breaker and new Darda CC440 crusher. It does however retain the same physical dimensions as the Brokk 160, and the wide range of attachments are fully compatible between the two models.

The new Brokk 200 is a new weight class for demolition robots, filling the gap between the Brokk 170 and the Brokk 300. It does this by providing the power of a 3,100 kg Brokk 280 fitted into a 2,100 kg package, facilitated by Brokk SmartPower™ technology. The 27.5kW machine carries tools one weight class above

its size, and brings the hydraulic power to match. The Brokk 200 comes with the new Brokk BHB 305 breaker and the new Darda CC480.

The Brokk 200 has 15% longer vertical and horizontal reach while retaining most of the compact dimensions of the Brokk 160. The extra chassis length and machine weight ensures balance, even when wielding the heavier and more powerful attachments. This means that the Brokk 200 is ideal for heavy duty but difficult to access projects and applications.

The Brokk 300 is an example of how quickly Brokk demolition robots have evolved to meet the ever increasing demands of the industry. Replacing the fairly recent Brokk 280 model, the new Brokk 300 comes with the more powerful Brokk BHB 455 breaker delivering 40% more hitting power. Equipped with the new generation of Brokk SmartPower™ technology, power output is increased to 37kW delivering the hydraulic flow and pressure to fully power the heavier and more powerful attachments it is paired with. Slightly longer than the Brokk 280 and weighing 500kg more, the Brokk

300 retains the same width and height, giving access to the same confined work sites. A new arm system increases vertical and horizontal reach to 6.5m and 6.1m respectively.

Finally, the Brokk 520D is said to establish a new standard for diesel powered demolition robots with a larger hydraulic breaker packing 40% more hitting power than the Brokk 400D it replaces. This eco-friendly five ton machine comes with two diesel engine options: a Stage 4/Tier 4 Final Kohler unit meeting the new EU and North American emission standards, and a Kubota model available for the rest of the world. The new Brokk 520D is slightly heavier and longer than the old Brokk 400D, boasting a larger BHB 705 breaker with 250mm longer work reach. Its heavier duty boom system and increased hydraulic performance means that it can handle the same wide range of heavier, more powerful attachments that are already available for the Brokk 500. The Brokk 520D also comes with Brokk SmartDesign™ that simplifies daily maintenance and increases machine uptime.

"The introduction of these four machines not only represents the biggest product launch in Brokk's history, it also redefines what has been considered possible to achieve in terms of power to

weight performance ratio for demolition robots. And this is all made possible by the unique new Brokk SmartPower™ technology. It is truly exciting to be able to say that after 40 years, Brokk still has the ability to redefine the industry," says Martin Krupicka, president and chief executive of Brokk Group.



Three bridges demolished in 48h using Epiroc heavy hydraulic breakers

Dutch contractor LEK Sloopwerken recently demolished three 150m long viaducts on the A27 motorway in the Netherlands during a single weekend in May. To achieve this, the company used Epiroc rig mounted heavy hydraulic breakers equipped with Epiroc's patented Intelligent Protection System (IPS).

The widening of the A27 and A1 motorways between Eemnes and Bunschoten-Spakenburg is a huge infrastructure project. On the Utrecht to Almere stretch of the A27 alone it involves the heavy demolition of six aging viaducts and their foundations. To minimise traffic disruption, the contractor was given a window of 48h during the weekend of 26-27 May to demolish three of the old bridges located near Hilversum and Bilthoven, an urban area with restrictions on noise and dust creation. Each bridge was 150m long and 6m high, and altogether the demolition work involved breaking 5,000m³ of specially reinforced concrete.

The job was completed successfully within the timeframe using nine Epiroc rig mounted heavy hydraulic breakers with service weights of three to seven tons. These comprised of four HB 7000's, an HB 5800, three HB 4100/4200's, and an HB 3100. The machines were mounted on Volvo, Cat and Hitachi carriers. Site manager Maarten Lek, stated that efficient service for the hydraulic breakers, as well as spare machines, and was provided on site by Epiroc distributor SAES International BV.

Breaker performance optimised with IPS

Epiroc heavy hydraulic breakers feature the patented Intelligent Protection System (IPS), which combines Epiroc's popular AutoControl and StartSelect functions, and automatically adapts the breaker's operating behaviour to any working condition. IPS permits more accurate and significantly faster positioning of the hydraulic breaker, thanks to the centring effect, and avoids blank firing that often results in tool damage. Uptime is higher since with IPS no operator intervention is required and thus there is no interruption of the working process.



TYROLIT SPECIAL PROJECTS TEAM celebrates 20 years of success

For more than 20 years, the Tyrolit special projects team has been successfully supporting customers with products and solutions for complex construction projects, such as the decommissioning of nuclear power plants and off shore platforms. One such solution developed has been the company's ATEX-certified wire sawing system - the first of its kind.

Tyrolit has developed a name for producing reliable diamond technology and associated premium products. However, the Tyrolean manufacturer offers far more than a range of ready to use products. In addition to solutions for renovation and demolition, the Tyrolit special projects team also provides support in far more specialised areas, such as decommissioning nuclear power plants or offshore platforms.

Customisable solutions

For complex projects, the special projects team offers a wide range of solutions for special applications, which are adapted according to the customers' needs. As well as its classic concrete drilling and sawing equipment, Tyrolit also supplies drill rigs for large diameter or deep drilling, curved tracks, or pile cutters for cutting pipes and columns. These all encompass the company's philosophy of supporting its customers in order to get the job done as efficiently as possible.

The professional partner in controlled decommissioning

Tyrolit has proved to be the ideal partner in the controlled decommissioning of nuclear power plants and offshore platforms. In this field, professionalism and experience are key. "More than 20 years of experience in the field of special projects make us the number one partner for complex decommissioning projects. According to the scope and complexity of the project, we provide our customers with customised support, reaching from bespoke product solutions to planning concepts and feasibility studies to on-site application support," says Roland Hettegger, who is in charge of the special projects team.

Regardless of the location, Tyrolit has lent its support in projects all around the world, including the restoration of water dams in Australia or South America, underwater cutting in the Atlantic, or the decommissioning of the Belene, Bulgaria nuclear power plant.

A pioneer of diamond wire technology

Tyrolit's accumulated know-how directly influences the development of its new products, particularly the advancement of diamond wire technology. A major highlight of the company's portfolio is the ATEX-certified wire saw system. With this system, Tyrolit is the first supplier worldwide to fulfil the stringent European Union explosion protection directive proving once again to be a pioneer in the field.

The system consists of the Tyrolit Premium DWH***-S ATEX wire, the SB wire saw and the PPH40RR drive with a certified protective cabin. Alternatively, customers can also use their own certified drive. "The system can also be used with other certified drives. Apart from the safety of the performing employees, we can, thus, guarantee a cost effective and efficient solution. Customers can be confident that all Tyrolit components are already certified and they only have to take care of the certification of the overall system," underlines Roland Hettegger.

The wire saw system is mainly used for cutting pipes or other steel structures in working environments where explosion hazardous gases can escape. Thus Tyrolit primarily serves companies and service providers commissioned with servicing and maintenance operations, and the expansion or modernisation of oil / gas platforms, oil refineries or chemical production facilities.

HYDRARAM®



Hydraram develops and produces over more than 25 years attachments for use in demolition & recycling industry.

We supply a complete line of hydraulic attachments for excavators from 1 to 250 tons.

**DEALERS
WANTED!**



WWW.HYDRARAM.COM



WALL SAW ATTACHMENT FOR DEMOLITION ROBOTS LAUNCHED

The Romanian concrete cutting company, LT Diamond Drilling Pty Ltd., has produced a very interesting development in the demolition industry, with the launch of the first wall sawing attachment for demolition robots. The hydraulic wall saw attachment offers robotic cutting in any direction: it is said to be flexible, powerful and can provide deep cutting in reinforced concrete and almost any type of construction material. At this point PDi Magazine has very little technical information

about the attachment, but we will come back with more information in a future issue. Youssef Hallak, founder and owner of LT Diamond Drilling, says that the new attachment has already been used at several work sites, and works very well. LT Diamond Drilling has grown extensively during the last few years, with its equipment now working throughout Eastern Europe and the Middle East.

www.diamonddrilling.ro

Brokk introduces a new line of hydraulic breakers

For the first time ever, Brokk has introduced its own hydraulic breaker series. The range comprises of a full line up of eight breaker models perfectly matched with Brokk's range of leading demolition robots, providing maximum demolition performance to Brokk customers.

The new Brokk Hydraulic Breaker (BHB) series of eight breaker models starts with the 50kg light BHB 55 breaker designed to be used with the compact Brokk 60 demolition robot, and goes up to the 700kg heavy and powerful BHB 705. The latter has been purpose developed for the recently introduced Brokk 500 and Brokk 520D demolition robots.

As with Brokk's demolition robots, a key feature of the Brokk Hydraulic Breakers is their power to weight performance. The breakers are lightweight and compact, yet are designed to be as powerful as heavier breakers from other brands. What is more, the new Brokk hydraulic breakers are perfectly matched with a respective Brokk demolition robot, and designed to work at their respective peak effect together, resulting in that Brokk now has the ability to deliver even more demolition performance.

"As the leading benchmark in the industry for compact demolition, it makes sense for us to now take the step to introduce our own line up of powerful hydraulic breakers to match the power and performance of unique demolition robots. By pairing our industry leading Brokk demolition robots with their respective Brokk Hydraulic Breaker, we can assure maximum demolition performance for our customers," says Martin Krupicka, president and chief executive of Brokk Group.

The first breakers from the BHB series were introduced together with the all new Brokk 170, Brokk 200 and Brokk 300 demolition robots earlier this year. Now, the Brokk Hydraulic Breaker range is complete, and available for Brokk's full range of demolition robots.



Ecomondo and Key Energy trade shows to tackle North African environmental issues

The circular economy and the development of renewable energies are but two challenges to be faced concerning environmental issues in North Africa. Both will be featured at Ecomondo and Key Energy, two trade shows organised by the Italian Exhibition Group (IEG) at Rimini Expo Centre (Italy) from 6 to 9 November 2018. At the 22nd Ecomondo, the core focus will be on the circular economy, whilst the 12th Key Energy aims to confirm its role as a leading forum for renewable energies and energy efficiency.

The two events, held simultaneously, will occupy 129,000m² of exhibition space, and play host to over 1,300 exhibitors, with 116,000 visitors, including over 90,000 qualified buyers, attending last year's events. As

well as the exhibitions, there will also be more than 200 associated events, supported by scientific committees, chaired by Professor Fabio Fava (Ecomondo) and Engineer Gianni Silvestrini (Key Energy); two of the leading experts in their respective disciplines.

In advance of the showcase, Professor Fabio Fava has presented an overview of the priorities facing the North African area, and the requirements (available at the link http://bit.ly/Ecomondo_Fava) for the region to be discussed at Ecomondo 2018. These include the effects of environmental changes in the Mediterranean area on local fishing, with aquaculture and aquatic biodiversity being the main subjects of a 'Marine bio resources' conference. Essentially, the Mediterranean area requires more

sustainable exploitation of fish stock and aquaculture systems. A conference titled, 'Sustainable fishery and aquaculture: new strategies and technologies', will focus on new technologies to improve sustainability. Both the above are scheduled to be held on 8 November.

In addition to the above, the main problems associated with plastics in the Mediterranean, the possible alternatives and current EU policies, will also be discussed. A group of acknowledged experts, policy makers and key representatives embracing relevant industrial sectors, public bodies, the EU commission and Parliament, will come together for a conference titled, 'Single use plastics and marine litter in Mediterranean sea: problems and solutions'. This is scheduled for 9 November 2018.

**THE NEW ANNA FAMILY
HIGH PERFORMANCE CUTTING
FOR PROFESSIONALS**

WEKA

TS40 ANNA
Disc Saw

TR40 ANNA
Ring Saw

TK40 ANNA
Chain Saw

FU6U
Frequency
Converter

For more information about our products and contact details of WEKA sales distributors, please visit our website.

www.weka-elektrowerkzeuge.de

FORTRESS™

**ATTACHMENTS FOR THE DEMOLITION &
SCRAP RECYCLING INDUSTRIES**



FS SERIES



FRG SERIES

DESIGNED AND
MANUFACTURED BY
SHEARCORE™
CONTACT US AT
INFO@SHEARCORE.COM
TO LEARN MORE ABOUT
OUR INTERNATIONAL
DEALER NETWORK.



PHONE: 715-395-3715 ♦ SHEARCORE.COM

Unusual application for Kemroc cutter wheel

Demolition of the Düte Bridge was made more difficult for demolition specialists, UPEK GmbH, due to the very unusual method used to construct the bridge. Built in 1968, the four lane motorway bridge on the A1 near Osnabrück, had eight pairs of supports holding up a single slab of concrete which was 280m long and 3m wide, made originally from one long, continuous pour. For this reason, the principal contractor for demolition, groundworks and construction, PORR Deutschland GmbH, had to build a steel structure to support the old bridge before it could start cutting into the concrete deck.

The intention was to cut the deck longitudinally into two halves so that one half could be removed and replaced with a new section, before the second half was removed, and construction of the second half of the new bridge could be completed. Passing under the old 300m long and 18m high bridge is not only the river Düte, but also a high speed railway line, so certain demolition works could only be completed during operational breaks in the railway schedule. The countryside near the bridge is also part of a nature reserve, meaning that the use of a long reach excavator to demolish the bridge from ground level was also not possible.



The subcontractor, UPEK from Steinfeld (Lower Saxony), was responsible for the demolition of the eastern half of the bridge over the high speed railway line. The company chose to use a Kemroc cutter wheel Erwetor DMW 220 mounted on a 50t excavator for the delicate demolition work. The procedure was to locate the excavator on the 15m wide half of the bridge deck to be demolished, and to cut out segments of the deck approximately 1m² in size. After each segment was cut, the excavator bucket was used to pull the segment backwards onto the uncut bridge deck, where it was reduced in size using a breaker or a shearer. As the concrete segment was supported on the bridge deck rather than being

suspended in the air, the blow energy of the breaker was very effective in breaking the segments down into smaller pieces. Reducing using shearers was also very effective since the steel reinforcement had been cut by the wheel.

By the end of May 2018, demolition of the bridge section that passed over the high speed railway line was completed, and demolition of the superstructure using conventional methods had started. However, it was also planned to use the excavator with the Erwetor cutter wheel to demolish the remaining 1,150mm thick bridge heads and abutments. In his interim report, the general manager, Mr Johannes Prues commented, "While cutting the 650mm thick concrete road we achieved a cutting speed of 30 meters per hour which translated into one meter of road demolished per hour. Naturally, tool wear while cutting the heavily reinforced concrete with contained 32mm diameter tension bars, was enormous. However, we achieved the desired production rate for the difficult task in the very short time frame available due to the high speed railway operating times."

For the demolition of the bridge heads and 800-1,200mm abutments, using the Kemroc cutter wheels had some very important benefits. "The ability of the wheel to cut down to 1m depths made the demolition of some structures much easier than would have been possible with traditional cutting and sawing techniques. In addition, using the cutter wheel on the bridge heads and abutments solved another problem. These structures were also formed from a single pour of concrete, and it was only the cutter wheel that made it possible to demolish the eastern half of the bridge without damaging the western half which remained operational. This would have been very difficult using hammers and shearers."



GSSI partner with Panasonic to provide a tough solution

As manufacturers of high quality ground penetrating radar technology, GSSI is an organization that understands the rigor of field work. GSSI's technology aids field work across many industries ranging from construction sites to public utility work, and even search and rescue missions following a natural disaster. Despite its reputation for advanced industry software, the company does not do it alone, with GSSI relying on a custom controller that was specifically developed for field work. While it met the unique hardware requirements for its ground penetrating radar (GPR) technology, the controller couldn't keep up with the design cycle, and the hardware too frequently became outdated. In a market that requires staying ahead of technological advancements, GSSI sought a new hardware partner to accompany its software.

After investigating other options in the rugged tablet market, GSSI ultimately settled on Panasonic, with its similar reputation for durability. With the assistance of its engineering team, the company purchased a fleet of both the Toughpad FZ-G1 and Toughpad FZ-M1 tablets as

well as proprietary software for use with its GPR systems. This created a bundle full suite package that offers customers full control over the complex, finely tuned radar systems. Although a Panasonic Toughbook customer for over 20 years, GSSI decided for its new requirements, a tablet was the better fit. Lightweight and portable, the tablet doesn't compromise on performance or screen size, and offers portability as well as greater flexibility in the field.

Due to the uniquely challenging environment of its work, a rugged design was the first thing to come to mind for GSSI when considering new hardware. One of the key reasons for choosing Panasonic was simply that Toughbook and Toughpad products are known for holding up to the rigor of tough work conditions. GSSI needed a device that could withstand the varying conditions of demanding environment to seal out the elements, and the Toughpad was the right fit for the job. In addition GSSI customers are known for being tough on their equipment as often operating in construction and safety zones means that equipment may not be handled too sympathetically, and

would need to be able to withstand this tough handling as well as the working environment.

Since GSSI customers primarily work in outdoors environments, visibility and battery life were other crucial features. Particularly in bright light conditions, commercial grade tablets get washed out and critical data is difficult to read on the screen. The ability to ensure visibility in all light conditions was another important aspect in choosing the Panasonic equipment. GSSI was also attracted to the added battery life available with the Toughpad, which is essential especially in emergency response and disaster recovery situations, where device failure due to battery loss simply isn't an option.

A result of two companies who pride themselves on serving workers in uniquely challenging environments, the chosen solution will support GSSI customers whatever conditions they face today, tomorrow and for another 20 years. Panasonic Toughpad was the right choice for GSSI for several reasons, but the main one is clear: it's built to last.



Serious London cutting **FROM DYMATEC**

Two of the UK's biggest players in the diamond drilling and concrete have recently removed a 4,000m³ slab of concrete from a building in London. This took 14 months, involved 10,000t of concrete and 1,000 diamond blades and cores.

A serious job for two serious players

The Grosvenor Place demolition project was located a stone's throw from Buckingham Palace in London. The project involved the removal of a basement slab of a five storey building in one of the most prestigious addresses in the capital so as to allow for additional below ground construction to convert a property into a brand new private hospital.

This was no easy task, especially given the thickness of the concrete, and the need to retain the majority of the slab to support the building. Undertaking this significant challenge saw two of the UK's leading players in the diamond drilling and concrete cutting industries, Dymatec and London Diamond Drilling, combine forces. Dymatec, a supplier and manufacturer of diamond consumables, was retained as the exclusive supplier to the contractor London Diamond Drilling, advising on, and providing, all the blades and cores needed to complete the works.

Extremely hard concrete

The project plan was to remove an 8m wide section around the entire perimeter of the basement slab. The perimeter had to be removed in sections to allow for the construction of steel structural support needed to hold up the main facade, which was to remain intact. 8m of concrete at a time was removed, with the concrete slab varying in thickness from 1m to 3.5m, with a significant quantity of 32mm rebar throughout.

As well as being a significant quantity to remove, 4,000m³ in total, the concrete was also extremely hard as it was packed with dense black flint. This meant that only the fastest diamond cores and blades would be able to power through it. To tackle this tough, unrelenting concrete, Dymatec recommended the SDF P20 diamond blade and supplied over 70 of these blades in varying sizes during the project. This powerful high performing blade, manufactured solely by Dymatec, was the only solution to combat the challenging concrete.

The plan was to tracksaw the entire perimeter up to 1.1m deep, and cross cuts into sections. However, this was only possible where the concrete was shallow enough. Anything deeper than 1m had to be stitch drilled. To facilitate this process, Dymatec supplied over 900 Turbo S cores. Once the perimeter of the concrete slab had been removed, the slab was peppered with 212mm diameter holes so it could be broken up using an 8" hydraulic buster. Only when this was complete could a team come in and break up the slab using Brokk 500 and 260.

A 14 month project

During the 14 months it took to cut and drill the basement slab, Dymatec was on site at least once a week, collecting used cores and blades, returning them to its UK headquarters to retip and repair, before delivering new and refurbished consumables back to the project. In addition, Dymatec's sales manager David Hibbert visited the project once every two weeks, to ensure the products were performing as they should. To ensure the works stayed on programme, and that tracksawing stayed ahead of the steelworks team, London Diamond Drilling was on site between 6 to 7 days every week during this demanding project.



**High frequency
concrete cutting in the Hague**

In March of this year, BVG Boren & Zagen BV in the Netherlands, received a commission from RED Betonbouw BV to undertake sawing work at the Tower of Oud located in Den Hague. The tower is to be remodelled, and is the oldest high rise building in Den Hague, with a height of 70m and 19 floors. This meant that traditional demolition techniques could not be used. Instead BVG Boren & Zagen BV opted for a total metamorphosis involving two additional floors. To undertake the work the company used a Pentruder 8-20iQ high cycle wall saw with 27 kW HF engine, and also bought a second Pentruder 8-20iQ with 22 kW HF engine from Adamas, Pentruder's dealer in the Netherlands.

Cutting was undertaken with ARIX-G3 X3-WS 2502 saw blades, also from Adamas.

Work began with the sawing of the 600mm roof edge. Under this was located a 23t glass cleaning lift which was removed during the sawing. This was followed by the drilling of lifting holes in the parapets of the 19 floors. During drilling the contractor also started cutting away one of three points, and after each floor was sawn, the concrete blocks were immediately hoisted down to the ground. After the point was completely removed, the sawing of the parapets was started from the bottom to the top.

Currently some 50% of the building has been demolished; with the demolition team now having removed all screeds, totalling 2,175m², with the released materials being put in large transport bags so that they could be removed by crane. The tower's columns were removed by means of wire saws, with the sawing working upwards, with the contractor installing a steel structure so that the tower would not tip over. As soon as the sawing of the parapets and the column were finished, the complete steel structure was installed.

Once all its wood has been removed, the spiral staircase located in the core of the building will be demolished. The spiral staircase has a diameter of 2,200mm and is 19 floors high. As soon as the staircase is loose, it will be turned by means of a mortar 180O so that the entrance will be on the other side. For this new entrance, new door openings have to be cut in the 480mm concrete of all 19 floors.

As soon as these activities are completed, the 'hat' will be cut from the roof. Here the new 2,200mm diameter recess will be located so that the new staircase can be raised further.

Eibenstock drill helps to renovate Kazanski Cathedral

Built in 1811, the Kazanski Cathedral is a prominent feature of the Nevski Prospect, the main street of Saint Petersburg. Currently undergoing renovation, the cathedral possesses a magnificent colonnade, which forms a square to its front. The condition of the columns has required work, with water seeping into the bases of the columns leading to their deterioration. Local demolition

contractor, Termite, was hired to detach the columns' metal elements from the brick work using diamond drilling. Handheld Eibenstock diamond drilling equipment was used due to the confined operating space, with their high power to weight ratio seeing the job finished in two shifts, with 40m of drilling being undertaken with a single DUS core drill bit.





MANUFACTURER OF DIAMOND TOOLS AND MACHINES

a professionals choice

made in Holland

Modular drill stands for the professional
CNC PRECISION



NEW TECH drilling
EXTREME FAST IN IRON

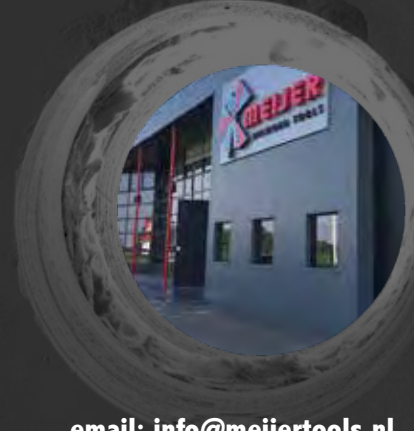
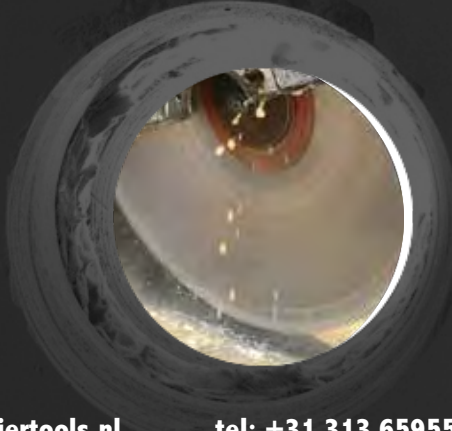
SPECIALIZED IN
HOLLOW CORE SLABS
PRE STRESSED CONCRETE



* **DRILLING** *

* **SAWING** *

* **FACTORY** *



Meijer Diamond Tools

www.meijertools.nl

tel: +31 313 659555

email: info@meijertools.nl



Rockster Crusher R1100S

Over 9000 operating hours with an average performance of 150 tonnes per hour (170 st/h). The Rockster R1100S proves itself every day in road construction in the Turkish province of Gaziantep. And that to the complete satisfaction of the customer.

The traditionally important region in southern Turkey - located on the border with Syria - is still one of Turkey's most important industrial areas. For the expansion of the infrastructure, executing companies especially focus on machines with best reliability.

The Rockster impact crusher R1100S, which was demonstrated at trial runs, convinced the end customer with its performance, but also especially with its flexibility and compactness.

Now, after more than 9000 operating hours in continuous operation, the R1100S has also proven its stability. Rockster's long-standing Turkish partner Alfamobil looks after the end customer in the handling of this road construction project. Apart from maintenance work and the replacement of the usual wear parts, the crusher was without problems in hard use.

Equipped with the screenbox RS104 and the double-functional return / stockpile belt RB95 the

machine crushes limestone with edge lengths of up to 700mm (28 in) to 0-35mm (0-1.4 in) final grain. By using the pre-screen, the sandy part of the broken material is removed and - in just one step - a high-quality cubic final grain is received, which is best carrier material for road construction.

The compactness and the resulting simple transport is a major advantage of the Rockster crusher, especially in road construction. The operators like the easy handling of the new crusher and the quick set-up, as the machine is put into operation within 10 minutes. Also, the adjustment of the entire crushing plant to the requirements at the site is very easy to accomplish.

Due to the positive experiences with the first crushing plant, the customer has decided to order another mobile crusher from Rockster Recycler. The new additional R1100DS crushing plant has meanwhile been delivered and has already been put into operation. Again, it meets the customer's requirements to the fullest satisfaction.

The two plants together ensure a rapid expansion of the important transport link in the booming region in southern Turkey.



DEMAREC ESTABLISHES DemaShop for demolition addicts

Demarec, part of the Kinshofer Group since 2006, launched its own dedicated e-commerce site at the beginning of July. The web shop has been created to service the requirements of dealers and customers, including 'real demolition addicts'.

With more than 25 years of experience in the demolition industry, Demarec has combined market knowledge with technology expertise. Its products have been developed with a focus on favourable operating costs, price to quality ratio, unique performance, a high level of service, design and low maintenance costs. In order to improve its service to its customers, the company has recently launched its own e-commerce site, Demashop.

DemaShop has been created to cater for the requirements of both enthusiasts and operators. It's a web shop with all kinds of items, including 1:50 scale models of its tools. As well as scale models, the shop also offers casual wear, including t-shirts, caps, beanies, mugs and keychains, including useful accessories such as power banks, lifesavers and travel adapters. All of which are have been designed by Demarec itself.

Dealer exclusive

Demarec's dealers will through the new online presence have access to an exclusive range of work wear. This will provide dealers with the opportunity to create a uniform look, as well as serving as a portal for dealers to order merchandise and brochures through one platform, with corresponding discounts.



Alfred Landl, stepping down but not resigning

On 1 July, Tyrolit's executive director for the construction division, Alfred Landl, handed over responsibility to Andreas Sauerwein, Helmuth Stampfer and Wolfgang Wiefeler. Alfred has worked more or less his entire adult life for Tyrolit, which he says, "Has shaped my mind and my daily life." Even though Alfred has reach the age of retirement, he is not completely leaving Tyrolit. Alfred will continue contributing in a more company-wide function. PDi Magazine would like to express its gratitude for the many years of great cooperation from Alfred, and wishes him the very best in all his future endeavours.

Universal. Aggressive. Yellow.

DT 612 UT

NEW

The diamond blade you can
rely on for all construction
materials



www.klingspor.de



Quick coupler systems and attachments from **LIEBHERR**



Liebherr-Hydraulikbagger GmbH innovative attachments and quick coupler systems can be used for both hydraulic excavators and material handlers from Liebherr, as well as with machines from other manufacturers. The Liebherr product portfolio ranges from quick coupler systems for all applications, through digging

her, as well as with machines from other manufacturers. The Liebherr product portfolio ranges from quick coupler systems for all applications, through digging

tools for the earthmoving sector to grabs for diverse applications in material handling.

The choice of the appropriate tool has a significant impact on the success of a project. This has led Liebherr to develop a wide range of attachments with each being optimally adapted in terms of shape, properties and technical equipment, to meet the specific application and machine size. Practice and continuous product development help ensure that new developments are, 'customer focused', and compatible with the existing product range, so that retrofitting or replacement of individual modules is possible.

Attachments for earthmoving

Liebherr offers numerous options for road construction, civil engineering and tunnel construction, water management, gardening and landscaping, demolition and the mining industry. In addition to backhoe buckets, tilt buckets and trench clearing buckets, tilt rotators, grabs, load hooks and pallet forks are also available, with the substantial product range having a modular design. Users have access to all relevant optional equipment in every available width of the attachment, providing countless variants for the common grabs or buckets, which can be configured to meet customer specific requirements.

Material handling

The range includes innovative attachments for material handlers for applications ranging from scrap, timber and port handling through to waste management and recycling. These are customised to meet the specific requirements of the different applications, and therefore optimise handling capacity. Thanks to Liebherr's flexible and practice orientated advice, customers are able to find the best solution from the portfolio of different clamshell buckets and multi-tine grabs, timber and sorter grabs and various lifting magnets.

Patented quick coupler system

For increased productivity, efficiency and safety on the construction site, Liebherr provides different levels of configuration for its quick coupler systems to suit specific applications. This way machines quick coupler system and attachment form a high performance unit for maximum efficiency and economy. Liebherr's mechanical quick coupler has proved to be an ideal solution when the aim is to increase machine flexibility and productivity, whilst minimising investment costs.

With the hydraulic Liebherr quick coupler system, a simple and safe change of mechanical tool attachments is possible from the cab. If the patented hydraulic coupling system Likufix® is added, then the quick and safe changeover of hydraulic tool attachments can happen at the touch of a button. With Likufix®, the hydraulic excavator's range of uses and machine productivity can be increased by up to 30%. All current official standards, as well as the forthcoming ISO 13031 standard, are met thanks to the hydraulic quick coupler's specially developed safety features.

Future focused developments

In order to continue to satisfy its customers need for high performance and productivity results, Liebherr is constantly developing new solutions for its attachments and quick coupler systems. The continued advance of digital technologies offers various possibilities in this respect. The interfaces and electrical connections between the machine and the attachment are also forward oriented, making the control of different hydraulic functions, such as transferring GPS receiver signals at the attachment, possible.

THE DEFINITIVE DEMOLITION SOLUTION

THE NEW SMARTPOWER™ LINEUP:



BROKK 170

BROKK 200

BROKK 520D

BROKK 300



Now, Brokk takes the next step in intelligent demolition. Four range-completing wonders with industry-first technology and features: SmartPower™ enables record-breaking power and reliability, SmartRemote™ gives new levels of ergonomics and productivity and SmartDesign™ combines ruggedness and serviceability. Welcome to the future of profitable demolition.

BROKK®

Intelligent Demolition Power

Brokk AB Skellefteå, Sweden | +46 (0)910 711 800 | www.brokk.com

HYUNDAI CONSTRUCTION EQUIPMENT

launches brand new HX130 LCR crawler excavator

Hyundai Construction Equipment has launched the new HX130 LCR, the third compact radius excavator model in the company's HX series product line. The 13t machine is also available in a second standard configuration, the HX130 LCRD, which includes a dozer blade. The new machine is the 15th HX series excavator model, filling an important gap in Hyundai's excavator line up. The machine has been developed as market demand is growing for this weight class, especially for compact swing machines that give contractors the added versatility of working in confined spaces.

The HX130 LCR excavator is powered by a 55kW Perkins 854F Tier 4 final / Stage IIIB compliant diesel engine, providing impressive performance and productivity. The LCR model has a standard operating weight of 12.7t, while the LCRD model's standard operating weight is 13.56t. It achieves a maximum dig depth of 5,570mm and maximum digging reach of 8,220mm with a bucket digging force of 10,369kgf. As with all Hyundai's machines, the new HX130 LCR excavator comes packed with high end features, such as a 203mm interactive, adjustable, touchscreen cluster-monitor in the cab.



The monitor enhances operational safety using Hyundai exclusive AAVM (all around view monitoring), an optional system that provides a 360° surround virtual operating view. Included in the AAVM, is the IMOD (intelligent moving object detection) system that senses and warns the operator when objects come within 5m of the machine.

A two piece boom version enables the excavator to work with a bigger reach, while maintaining a reduced front swing. It comes with the boom articulation mounted to the underside of the standard

boom; a solution ensuring effective protection against soiling and damage. The former is often requested by European construction companies working in road construction, utilities and urban environments, where working often involves confined spaces.

The HX130 LCR also features IPC (intelligent power control), computer aided power optimisation based on load demand, and an eco-breaker mode. The latter comprises of a selectable pump flow and improved fuel consumption when working with Hyundai hydraulic breakers and other attachments.







**PROFESSIONAL
GERMAN
POWER TOOLS**

eibenstock.com

MOTOCUT

PILE CUTTER

**Safe!
Efficient!**



**Patented
new method**

FOR CONCRETE AND STEEL PILES

MotoCut Ltd (Finland) | sales@motocut.fi
www.motocut.fi | +358 40 544 5441

Twice² the Holes Half the Time

HiSpeed Diamond Core Bits
for High Strength & Heavily
Reinforced Concrete

2.6 x  New **HiSpeed**

1.2 x  B+BTec 1st Generation

1.0 x  Baseline

Drilling Speed
Comparison



HiSpeed Diamond Core Bits easily Cut through
22 mm Solid Steel!



B+BTec



Munterij 8 | 4762 AH Zevenbergen | The Netherlands
T +31 - (0)168 331 260 | E info@bbtectools.com | www.bbtectools.com



Innovation and surprises from **Ausa** at Intermat

Intermat 2018 saw AUSA, with the global manufacturer of compact, all terrain industrial vehicles for loading and moving materials, capturing the attention of visitors to its stand with its latest innovations exhibited.

Innovation displayed

Technology, safety and 'unstoppability' are the three concepts that define the new D601AHG AUSA dumper which was unveiled at Intermat. This is the first dumper equipped with hydrostatic transmission and limited slip differential on both axles, giving it excellent all terrain traction. It incorporates three automatic operating modes - eco, which automatically regulates the engine's revolutions for greater efficiency and lower consumption; start & stop, which switches the engine off when it is not in use; and transport, which increases the engine's power for greater speed during journeys. It also incorporates a digital display on the dashboard that provides the driver with all of the machine's information.

A surprise from AUSA

Also unveiled at the show was the D100AHA electric which is the first electric dumper with a driver's cab. The prototype of the most compact dumper in AUSA's catalogue possesses an electrical power unit that delivers 13kW with a capacity of 6h at maximum power; enough to power the machine for an entire working day. With an external transformer, it can be connected directly to the mains (220V), completing the charging process in just 5h. As with the base model, it possesses a loading capacity of 1t.

Full visibility system

Incorporated in the new D450AHG dumper, with a loading capacity of 4.5t and hydrostatic transmission, is AUSA's full visibility system. This provides a safety system that includes two night vision cameras and eight proximity sensors. It is technology taken directly from the automotive sector, whereby the TFT screen in the driver's cab provides the operator with total vision of their surroundings, allowing the driver to be constantly aware of elements in front and to the rear of the vehicle that are lost in their direct field of vision.

Ultracompact telehandler

The new T144H is AUSA's highly compact telescopic handler, with a loading capacity of 1350kg up to a maximum height of 4m. In addition, thanks to the side position of its telescopic arm, it has the widest driver's cab of the sector, which is also claimed to be 'very comfortable'. With its highly advanced driver's cab design, it provides the operator with excellent visibility.

Completing the line-up on the stand, AUSA also presented the models that are already known, such as the T204H compact telescopic handler, with a loading capacity of 2000kg with a reach of up to 4.2m, the renowned C250H and C500 forklifts, with loading capacities of 2.5t and 5t respectively, and the BD202HL mechanical sweeper, with a capacity of 1.2m³.

MARUZEN

LIGHTWEIGHT, BUT POWERFUL!

MADE IN JAPAN SINCE 1954

HYDRAULIC POWER TOOLS

Still using big, heavy air compressors?

Let our professional small & compact hydraulic power tools take over.





Rock Drill Breaker Pile Driver

INTERNATIONAL DISTRIBUTOR/DEALER

WE ARE LOOKING FOR DISTRIBUTORS AND SALES REPRESENTATIVES FOR OUR HYDRAULIC TOOLS. IF YOU ARE INTERESTED, PLEASE FEEL FREE TO CONTACT US!

WANTED



WWW.MARUZENKOGYO.CO.JP

THE DUPLEX SYSTEM

Patented possibility
to change between
impact and jaw crusher

ROCKSTER[®]

RECYCLER



IMPACT CRUSHER

JAW CRUSHER



The patented ROCKSTER DUPLEX SYSTEM in operation.

Universal benefit!
Optimal investment.



Rockster Recycler AUSTRIA | www.rockster.at | www.rocksternorthamerica.com
Wirtschaftszeile West 2, 4482 Ennsdorf | Tel.: +43 7223 81000 | office@rockster.at
Rockster NORTH AMERICA Inc. | Tel: +1 (856) 213-2119 | office@rocksternorthamerica.com



HYDRAULIC HAMMERS

COMPACTORS

HYDRAULIC SHEARS



shop.idromeccanica.com

SMALL, MEDIUM AND LARGE
CLASS

MULTIBRAND SPARE PARTS



WE MANUFACTURE

INNOVATION, QUALITY, RELIABILITY
IS OUR MISSION

Idromeccanica italiana Srl
Via Antichi Pastifici 2, 70056 Molfetta (BA) - ITALY



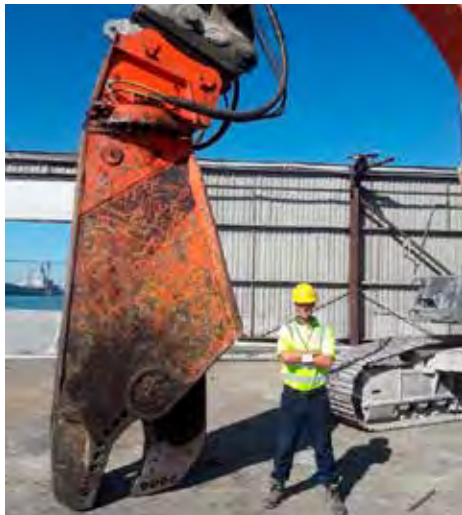
CONTACTS

@ info@idromeccanica.com

080 338 8199



+ www.idromeccanica.com



Customers' testimonials endorse ShearCore Fortress attachments

Fortress attachments are designed and manufactured by ShearCore, which is located in Superior, Wisconsin, USA. The company was founded by Bruce Bacon, who has worked in the scrap recycling and demolition industries since the early 90s, initially as a sales manager for Roy Labounty. Roy sold Labounty to Stanley Tools and then retired, which led to Bruce co-founding Genesis Attachments, and to found ShearCore after his partners at Genesis decided to sell the business.

Fortress mobile shears are designed by arguably the best mobile shear designer in the world, Ross Christenson. Ross deserves credit for several shear innovations over the past 20 years while previously designing shears at both Labounty and Genesis. It can now be said that Ross has surpassed himself with his work on the Fortress mobile shear line, with Ross's designs being known to be powerful, robust, thoughtful, and designed for ease of maintenance.

ShearCore's manufacturing is led by Jim Campbell. Jim was the head of manufacturing for Genesis for its first 12 years, and prior to that he ran the reconditioning department at Labounty. Jim's experience, and his team of attachment machinists and welders, enables him to manufacture the best product possible.

All this said and done, the true value of Fortress attachments comes directly from the words of its customers. "With our old shear, we could only cut 50t-70t a day. With the Fortress we're doing 100t a day," said Daniel Robertson, Robertson Metal Recycling of North Dakota. "We replaced one of the competitor's larger shears with a Fortress shear that was one size smaller than the competitor's, and the Fortress outperformed it," Shane Durand, CEI in Alaska.

It's not just American customers who enthuse about the attachments. "These are the best shears on the market backed by the best warranty in the business! Hands down!" Said Greg Morley of Shear Power Corp located in Ontario. "Our Fortress shears outperform any shear we've ever had, and anytime we need assistance the service and support from the ShearCore team is unmatched." Travis Mryglod, Mryglod Steel & Metals in Saskatchewan, whereas Trevor Munro, MetalCorp in New Zealand stated, "We love our Fortress mobile shear."

Bill Munday, of the UK's Hughes Salvage also added a ringing endorsement: "I have been carrying out maintenance and repairs on various demolition attachments for 20 years, and since we've started purchasing our Fortress shears and processors, we believe Fortress to be the highest quality demolition attachments on the market by far. They are very easy to maintain and very reliable."



HUSQVARNA AIR SCRUBBERS and HTC Duratig grinders clean the way

Using an air scrubber can further clean air in enclosed area, and are easy to use: plug it in, turn it on and it's ready to clean the air. When used in addition to a dust suppression system, it helps ensure work space is well protected against airborne dust particles. Husqvarna's A-line features two of the most advanced and versatile portable air scrubbers available on the market. They are tested and certified for use as both air scrubbers and negative air machines, making them the ideal complement to dust and slurry management equipment as well as other applications where air quality is essential.

The A600 and A1200 are equipped with an efficient filter system providing superior air quality when dealing with concrete, fine sanding or gypsum dust. The number of air cleaners needed for a particular job site should be calculated so that the entire air volume on the worksite is filtered at least six to eight times per hour. Amongst their many features include a quiet and efficient operation, are ready for ducting, come in a lightweight cabinet with sturdy aluminium frame and metal locking casters and with a metal mesh protecting the filter area. They also provide two stage air filtration, with a pre-filter made of pleated polyester which catches the larger dust fractions before the air enters the individually tested HEPA filter, ensuring 99.97% efficiency at 0.3 microns.

Single phase dust extractors

The Husqvarna S-line (S 13, S 26 and S 36) consists of professional dust extractors designed to meet strict demands. These compact, lightweight machines are equipped with one, two or three powerful single phase electric motors with separate cooling, capable of running

continuously all workday. This makes them suitable for all construction, abatement and restoration jobs, as well as for use with electric power tools.

Additionally a dust extractor can act as a substitute for a cube vac, this being primarily due to jet pulse cleaning of the conical main filter. A Longopac® collecting bag enables the machine to be emptied quickly and simply, whilst individually tested and certified HEPA filters provide superior and safe dust collection, even on fine sanding and gypsum dust. Longopac bags are completely sealed, meaning that the operator never comes into contact with the dust.

As well as the above, Airflow™ tool holders have been developed to increase airflow across tools to improve diamond cutting and life. At the same time, the increased airflow creates a cyclone effect in the grinder head and enables the dust extractor to pull dust off of the floor more effectively.

Duratig benefits

The HTC Duratig floor grinders feature a number of innovations that interact to increase efficiency, and improve the work environment. These include AirFlow™ technology and the mist cooler system, MCS. AirFlow™ technology optimises the airflow inlet at the base of the grinder head versus the top of the grinder head to increase the amount of dust that is pulled off the floor. This creates a newly dust free work environment with less manual dust collection. The MCS's main purpose is to keep tooling cool, which in turn means improved performance, and longer service life. However, the mist has the added benefit of helping to keep any dust that may still be floating suppressed.

REDUCE>REUSE>RECYCLE



DOMADVERTISING.COM

ONE SYSTEM, MANY APPLICATION AREAS

- | | | | | | | | | |
|---|---|---|---|---|---|---|---|---|
|  |  |  |  |  |  |  |  |  |
| ROAD WORKS | DEMOLITION | RECYCLING | QUARRIES
AND MINES | URBAN
JOB SITE | PIPING | EXCAVATION | TUNNELS AND
ENCLOSED SPACES | AGRICULTURAL
SPACES |

ECOMONDO

Booth #C5 - 130 | November 6-9 2018



WATCH MB AT WORK
< Scan the QRcode
info@mbcrusher.com
WWW.MBCRUSHER.COM

MB[®]

THE CRUSHING EVOLUTION



STATE OF THE ART DRY CORING APPROVED FOR NUCLEAR POWER PLANT USE

Baier has been producing high quality power tools for over 80 years. Located in Stuttgart, Germany, the company now exports to over 60 countries, gaining a worldwide reputation for quality and innovation.

Baier has gained particular knowledge and experience in dry core drilling, with its solutions proving to be more than a match for any rock encountered. Fitted with a high quality vacuum cleaner, unique soft impact system and titanium core bit, the company's BDB 825 ø160mm easily dry cuts through concrete with rebar, granite, and all kinds of natural stone.

Now an additional machine has been added to Baier's dry core drilling range: the new BDB 829 with a maximum dry core cutting range of ø250mm. Fitted with a powerful 2.3kW engine and a solid two gear box, the BDB 829 has enough torque to successfully dry core

from 50mm upwards. As with its smaller predecessor, the BDB 829, it is able to deal with any kind of stone, or the hardest concrete with rebar. Furthermore, it requires no water use, resulting in no water contamination, and no resulting decontamination costs.

This new drill is particularly suited for the removing of contaminated concrete from the interior of the nuclear power station walls. The BDB 829 is automatically adjustable by 1/10mm, is dust free and dry, requiring zero water or humidity, and when working in hazardous conditions, may be remote controlled on an automated rail guided system. It is also fitted with a double dust suction device to work totally dust free on rails from 0.5m to 20m. No human input is required, and is able to work 24h a day, 7 days a week. This system has also been approved for use by German nuclear power plants.



EPIROC develop bio chisel paste for hydraulic breakers

Used to grease the wear bushings in hydraulic breakers, Epiroc's new bio chisel paste helps prevent bushing wear and prolong working tool life. The formulation is based on special synthetic esters that are easily biodegradable, and have been approved by the European commission for use in environmentally sensitive applications. This has been developed as inside a hydraulic breaker the ambient working temperature reaches up to 1100°C under extreme load. In these conditions, the standard greases available on the market will liquefy and disappear. Without adequate lubrication, bushings suffer accelerated wear, thereby increasing the cost of breaker operation.

Excellent performance at high temperature

Tailor made for hydraulic breakers, Epiroc bio chisel paste gives excellent performance across a wide range of temperatures from -30°C up to +1100°C. The bio chisel paste has high load carrying characteristics with very good separation capacity, helping to reduce breaker operating costs by reducing bushing wear and working tool breakage. High water resistance also makes it suitable for underwater applications, with the product offering a high level of corrosion protection. For the breaker to benefit from the full protection offered by the Epiroc bio chisel paste, lubrication should be performed at regular intervals, and care should be taken not to over lubricate.

Automatic or manual greasing

Epiroc Bio chisel paste is suitable for automatic lubrication on Epiroc hydraulic breakers with ContiLube™ II Micro or ContiLube™ II, or for manual greasing with a grease gun on Epiroc or any other breakers. The product is supplied in cartridges (refillable) or buckets. Cartridge sizes are: 150g, 400g or 500g. Bucket sizes are: 15 kg or 45 kg, with the packaging bearing the EU Certified Eco Label (DE/027/243).





ARJES
Recycling Innovation

-  **c&d recycling**
concrete, asphalt, metal, wood
-  **short set-up times**
hooklift truck transport
-  **track system**
guarantees mobility

IMPAKTOR 250
POWER & TOUGHNESS IN A COMPACT FORMAT

www.arjes.de



AUTOPILOT

WATCH THE
VIDEO



Klindex is the choice of top flooring professionals.

Floor grinders • Dust extractors • Diamond tools • Burnishing machines • Chemicals • Floor Solutions

www.klindex-america.com



MB-S18 SCREENING BUCKET helps with Qatar world cup infrastructure projects

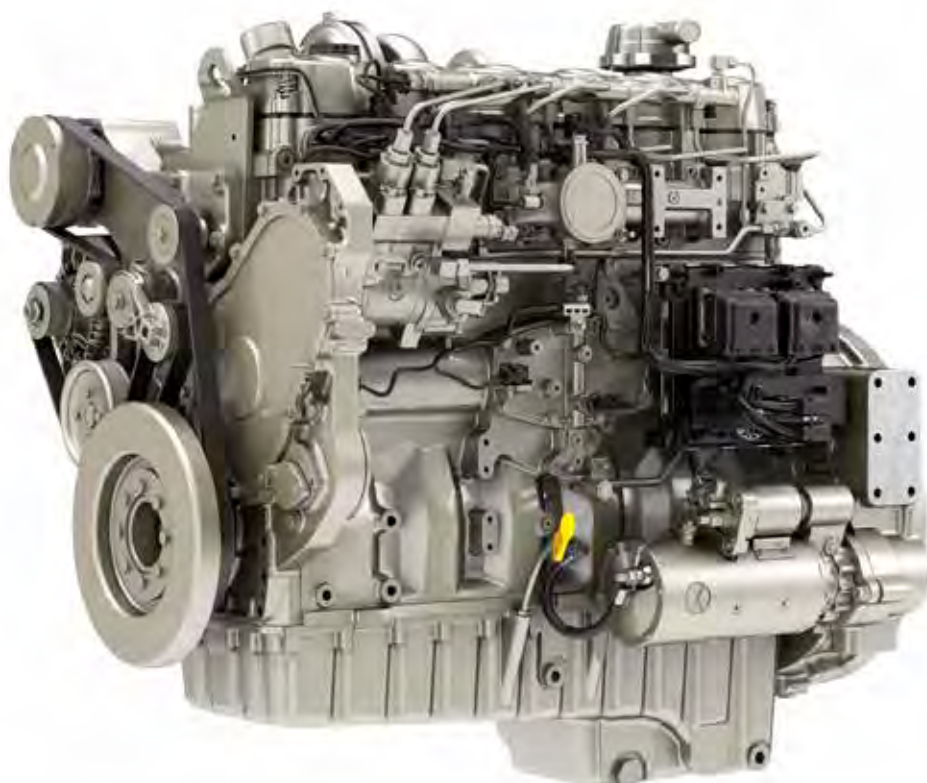
Although one world cup has just finished, work on the next is already underway, with MB Crusher equipment already at work on many construction sites in Qatar, preparing for the construction of the FIFA 2022 World Cup stadiums. More than €100B has been invested in the country in projects and infrastructure, thereby providing opportunities for local and international contracting companies, and acting as a driving force for the economy of the country.

One such construction company involved in the projects preparing for the world cup is Al-Jaber and Makhlof, which has been using a MB-S18 screening bucket for the Al Furousiya Street works located in the Aspire Zone, in Dohar. This will provide the main connection to the 45,000 seater Al-Khor stadium complex.

The MB screening bucket is attached to a Hitachi excavator in order to screen excavated material resulting from preliminary construction work. The coarser graders were used as a subbase, while the finer gradings being mixed with sand. It terms of saving time, reducing machinery required and saving money, the use of the screening bucket has been a major success. As large processing plants are located about 50km from construction site, the use of the MB screener reduced transport and associated costs on a road that is already very busy. Additionally, by processing and reusing the excavated material directly on site, processing times and the procurement costs have been halved.

This is not the first world cup site that has seen MB buckets successfully used. In 2010 MB crusher buckets were used for the construction site of the Soccer City stadium, where the final of South Africa 2010 was held. Then, in 2014, MB crushers and screeners were used on the construction of the Arena Pernambuco stadium for the Brazil 2014 world cup.

The Al Furousiya Street construction site is not the only project where MB buckets are being used for the 2022 Qatar world cup. A 320km new metro network is to be built, along with connections for all the stadiums with the country's motorway system; MB bucket will be playing their part on these developments.



Perkins introduces 14 new **STAGE V ENGINES**

The new 14 different Perkins engines marks the biggest new emissions introduction program by any engine manufacturer. The company now has a full offering of Stage V engines ranging from 0.5l to 18l, covering all power nodes from 5kW to over 450kW. Perkins now offers a choice of 18.5kW engines. This will mean that small equipment, such as mini excavators, can continue to be offered with no EGR, no common rail and no aftertreatment. New 1.7l engines will be offered in both naturally aspirated and turbo versions to give maximum torque whilst respecting power limits. The 1.7l common rail platforms will benefit from 34% upgrade in torque, and a 24% increase in power, making it ideal for OEMs looking to downsize to a smaller engine. The 2.2l version also has increases in both torque and power.

The new Perkins Syncro 2.8l and 3.6l platforms are scheduled to go into production in 2019. OEMs have already commented favourably on their quality and performance, being viewed as significantly quieter and reducing operator fatigue. Likewise the 4.4l and 7.1l platforms are used in some of the highest productivity machines in the construction industry, being popular in excavators. This new generation to meet EU stage V has made further improvements to fuel consumption (7%), power (15%) and torque.

The 9.3l 1706J-E93TA platform has been the first of the Perkins Stage V range to enter production. A successful engineering and field validation test has successfully accumulated more than 100,000 running hours

TRAXX Construction Products

On the 10 August 2018, Traxx managing director, Lloyd Williams was presented with the CSDAA's Life Membership Award by Jason Franken, the president of the Concrete Sawing and Drilling Association of Australia. In a speech, Jason outlined many, but not all, of Lloyd's achievements over his many years within the construction industry. Congratulations to Lloyd on receiving the deserved award.



Lloyd Williams.



Time Free Dumpers!

**High Tipping
High Loading Capacity**

**High Capacity
Battery Bank**

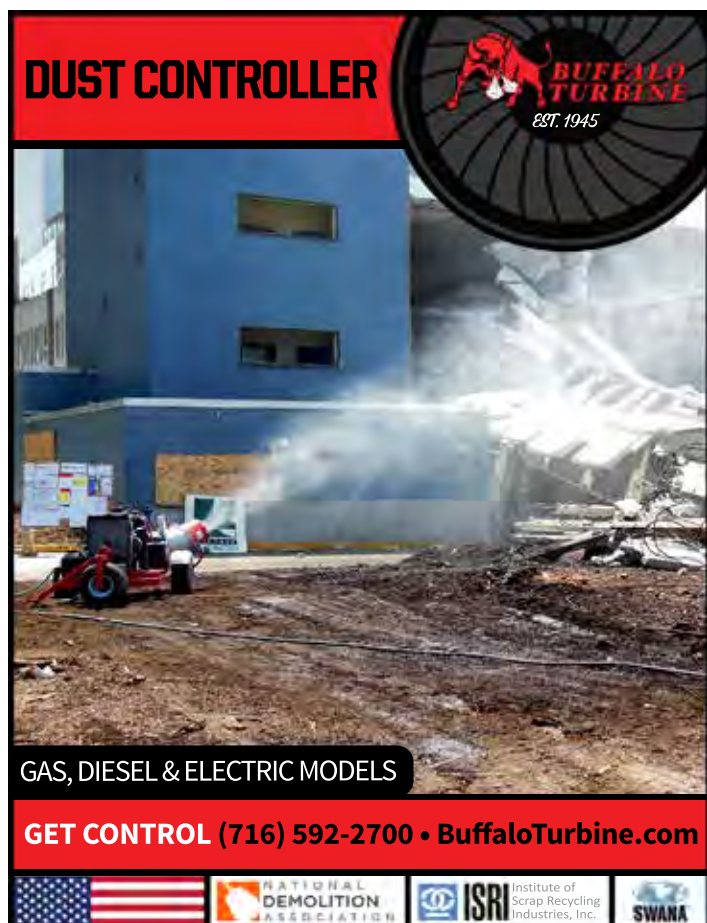
Plenty in the Bank

**High Working Hours
Highly Recommended
for Manual Handling
...Simply Lovely!**

**TWINCA
CONTRACTOR**

**Call Today and
Say Hi to Your
New Team Member**

www.diamondhireandsales.co.uk
Phone: +44 01252-524 141



DUST CONTROLLER

BUFFALO TURBINE
EST. 1945

GAS, DIESEL & ELECTRIC MODELS

GET CONTROL (716) 592-2700 • BuffaloTurbine.com

NATIONAL DEMOLITION ASSOCIATION

ISRI Institute of Scrap Recycling Industries, Inc.

SWANA



VSE

SCREENING BUCKETS

- ✓ **Quick adjustment of output size:** the Simex-patented mechanism allows the screening bucket drums to be distanced or closed by means of a hydraulic system. This feature makes it possible to vary the output size of the screened material in only seconds via an operator control directly in the cabin.
- ✓ **Easily replaceable screening elements.** Different screening element designs available for a variety of materials. Tool replacement is quick and does not require shaft disassembly.
- ✓ **Designed for separating different-sized materials directly on the work site.** Big increase in productivity, easy loading, extremely easy operation.



simex.it

SIMEX
your business, our passion

Simex srl - Via Isaac Newton, 31 - 40017
San Giovanni in Persiceto (BO) - ITALY
phone: +39 (0)51 681 0609
sales@simex.it



Electrifying premiere for **KEESTRACK AT HILLHEAD 2018**

Keestrack presented its revolutionary mobile cone crusher H4e at Hillhead 2018. Making its UK debut, the highly compact plant with optional integrated pre-screen and three deck hanging screen, was exhibited in its fully hybrid electric version, which delivers energy savings in productive secondary or tertiary crushing. "We were really impressed by the large international attendance at this year's show," says Michael Brookshaw, Keestrack's global distributor manager. "We met numerous expert visitors from all over Europe, and our overseas market regions including Americas and Asia."

Successful debut

The fully hybrid H4e cone crusher emphasises Keestrack's philosophy of flexible mobility and productivity. Even with its optional three deck hanging screen, the fully equipped plant weighs only 46t (without options, 35t), providing 'one piece' road transport and fast relocation on site. For flexible autonomous operation, the H4e is equipped with a 345kW (EU-IV) / 328kW fixed speed (EU-IIIa) on board diesel engine. The engine drives a 330kVa alternator, providing power to the 132kW electric motor of the crusher drive, and to

the separate 45kW E motor/pump unit for all hydraulic drives on the plant. Without starting the diesel, this setup enables the plant to operate fully 'plug in' from mains or external gen set, resulting in energy cost savings up to 70% compared to conventional diesel-hydraulic plants. As an option, the H4e diesel/alternator combination is available as detachable drop off unit which may be remotely positioned during operation.

The H4e features the KT-H4 cone crusher, adapted and supplied by a world leading cone specialist, with the fully automated unit producing up to 250tph at maximum feed sizes of 185mm. The wide variety of concaves enables high flexibility in secondary or tertiary production of highly defined end fractions. To optimise production, the plant can be optionally equipped with a pre-screen with fines chute, and with a highly efficient three deck secondary screen module with recycling conveyor for closed circuit processing. The large dimensioning of the hanging screen (3x5.4 m²), and large stockpiling capacities of the conveyors, prevent bottle neck effects in producing up to four highly defined quality end fractions.



Komatsu Europe launches WA100M-8

The new Komatsu WA100M-8 compact wheel loader enhances low cost operations with a powerful EU Stage IV engine, the proven Komatsu selective catalytic reduction (SCR) system, a new ergonomic design, a high level of standard specifications and an array of new options. This makes the loader ideal for construction sites, the recycling industry or for agricultural jobs. With its hydraulic quick coupler, easy fork

kinematic and a wide range of available attachments, the Komatsu WA100M-8 is a reliable and versatile tool "The WA100M-8 is built on the strong base of the WA100M-7," says Sebastian Zienau, product manager at Komatsu Europe. "With its many new features and options, it opens up a whole new range of versatility. We're really looking forward to offering such a flexible machine to our customers."



New PC80MR-5 midi excavator

Komatsu Europe premiered its new PC80MR-5 midi excavator at the Intermat fair in Paris in April this year. With an integrated counterweight and tight tail swing radius, a swing boom that hugs the machine, and operating weights ranging from 8,000 to 8,240kg, the PC80MR-5 has been designed for working in confined areas and urban environments.

The Komatsu PC80MR-5 comes complete with new and improved features. Designed with the customer in mind, it is powered by an electronically controlled Komatsu 4D98E-5SFB Stage IIIB engine, with DPF and a net horsepower of 46.2kW. This more environmentally friendly engine maintains the proven performance of the previous series, while reducing fuel consumption by up to 10%. "The PC80MR-5 is designed for improved versatility, manoeuvrability, comfort and for low operating costs," says Emanuele Viel, Keisa Group manager utility. "It's a perfect tool for most confined area jobsites and for construction, utility, landscaping or similar applications."

Optimal performance

Komatsu's reliable and tough design solutions have further reduced machine downtime. The auto decelerator and idle shutdown now both come as standard, helping to reduce fuel consumption, increase residual value and lower service costs. The proportional lines improve the machine's productivity and versatility when working with attachments. Newly developed hydraulic electronic controls optimise machine performance, and also lower fuel consumption, whatever the job. The six selectable working modes, a concept usually reserved for higher end hydraulic excavators, deliver relaxed operations and increased profits.

First class operator comfort

The new PC80MR-5's cab was redesigned, inside and out, for greater functionality, as well as a modern look and feel. Accessibility has been improved with a new hinged door solution, and a high resolution multi-functional 90mm (approx.) LCD colour monitor panel, with maintenance info displayed, which improves ease of use and technological appeal. Air conditioning is now standard, and a dial type fuel control further increases operator comfort, control and convenience

Safety and peace of mind

A control lever neutral detection system provides what is said to be an industry leading safety feature, along with the engine shutdown secondary switch and seat belt caution indicator. The easy to use tie down brackets provides fast and easy transportability.

Manufactured by Komatsu Italia

Komatsu Italia Manufacturing, located in Este, Italy, is a subsidiary of Komatsu Ltd., and specialises in the manufacturing of mini excavators, skid steer loaders, backhoe loaders and hydraulic excavators under 17t. The new PC80MR-5 is but the latest excavator to be designed and built in Italy.



ENHANCE YOUR PRODUCTIVITY

**Hilti DST 20-CA
wall saw**



Hilti has set a new standard with its latest generation of DST 20-CA wall saws. The new saws provide a 30 percent increase in power compared to the previous generation, while having three times the starting torque. The DST 20-CA electric wall saw is the first saw in its class without a power box. The integrated electronics in the saw head simplify transport of the saw and also make lengthy set-up times a thing of the past. A cordless remote control displays the cutting depth in real time. Thanks to the integrated CutAssist system the saw operates on a hands-free basis.

Find out more: www.hilti.co.uk



KLEEMANN boosting Danish recycling productivity

The Danish recycling market has been experiencing a real boom in recent years, with MIS Recycling A/S reaping the benefits of this trend. To meet the huge demand, MIS now operate 10 Kleemann impact crushing plants.

Danish company MIS is playing a pioneering role. Each year, the recycling company processes approximately 3MT of residual construction materials, and 100,000t of natural stone, with one of the most frequent applications being the processing of asphalt. Using impact crushing plants, material is crushed into 0–6mm and 0–20mm sizes, with the final product being returned to the asphalt production cycle. The processing Kleemann crushing and screening plants are transported straight to the desired location, remaining on site for one to two weeks, depending on the size of the project.

“The high quality and robustness of the plants impressed us as soon as we started using our first Mobirex 130 mobile crushing plant in 2002,” says Martin Henriksen, director of MIS Recycling A/S. In 2009 MIS decided to buy the latest MR EVO models, and now operate 10 MobirexMR EVO2 plants and 3 Mobiscreen screening plants. “The Kleemann plants just last longer, are more powerful and deliver a higher quality than other crushing plants we worked with,” says Henrik Hvid, MIS production manager.

The continuous use of the EVO2 impact crushing plants creates synergies, as MIS operating personnel are very familiar with the plants they do not need to



adjust to different technology. The two latest MR 130 Zi EVO2 plants are also equipped with Kleemann's new ‘Spective’ control system, which is particularly intuitive to use, and even automates some machine functions. “It's much easier to use the plants and no explanations are required,” says Martin Henriksen.

The next few years are expected to see stricter regulations on the use of screening and crushing plants being

implemented in the Danish city centres of Copenhagen, Aarhus and Odense. As it gears up for this development, it was important to MIS that the two new MR 130 Zi EVO2 plants met the exhaust emissions standard Tier 4 final. The Scania engine of the plant is fitted with a diesel particulate filter and a carbamide tank in order to reduce emissions of nitrogen oxides, carbon monoxides and fine dust.

KOMATSU EUROPE INTRODUCES THE PC228USLC-11

The new Komatsu PC228USLC-11 possesses many new features, including improved lifting performance with 6% lower fuel consumption, improved operator comfort, increased safety features and leading low in cab noise levels. Its rounded cab design, more compact than on a conventional excavator, allows it to rotate within the counterweight's swing radius.

The upgraded Komatsu excavator provides the benefits of its predecessor, with lower operational costs and more versatility. Designed and equipped for maximised productivity and control, it efficiently carries out digging, trenching, landscaping, site preparation or any other task required. Paul Dickinson, product manager at Komatsu Europe International states: “This new ultra-short tail excavator does so much more than simply meet EU Stage IV emission regulations: it offers significant advances in fuel consumption, lift capacity and working envelope, provides 3G communications, improves operator comfort and includes new safety features. The new larger diameter boom raise cylinders provide much improved lifting capabilities, and with the improved hydraulics, smoother operation and levelling.”

Low emissions and low operating costs

Operating weights of the PC228USLC-11 range from 23,600 kg to 24,150 kg. It is powered by a Komatsu SAA6D107E-3 engine, EU Stage IV emissions certified, with a net horsepower of 123kW at 2,000 rpm. Komatsu's advanced electronic control system manages the airflow rate, fuel injection, combustion parameters and after treatment functions. Komatsu's EU Stage IV engine optimises performance, reduces emissions and provides advanced diagnostic capability, enabling customers to

benefit from lower fuel consumption with no loss of performance. An integrated SCR (selective catalytic reduction) system further reduces NOx emissions using the AdBlue® additive.

Versatility and Efficiency

Powerful and precise, the PC228USLC-1 is designed for a wide range of applications. All major components, including the engine, hydraulic pumps, motors and valves are exclusively designed and produced by Komatsu.

Larger boom raise cylinders, combined with an upgrade to the arm's hydraulic circuit, improve the excavator's lift capacity by up to 21%, with heavy loads being placed easily, in a wider working range. These features enable the operator to get the job done correctly the first time, under any working conditions, thanks to the easy and smooth arm control.

Safety and Operator Comfort

A comfortable work environment has been designed to further maximise productivity. Specifically designed for hydraulic excavators, the ROPS certified cab gains strength from a reinforced box structure framework. It is mounted on rubber isolation dampers for low vibration levels, with its sliding cab door enabling unrestricted access / egress to the cab in confined spaces. The radio offers pre-sets and an auxiliary USB input for connecting external devices.

The new viscous fan clutch system reduces both power loss and engine load when maximum cooling is not required. This lowers fuel consumption, and contributes to what is said to be a class leading low in cab noise level of 71dB. Proportional control joysticks

are standard, and allow precise operation of attachments with comfort and ease. A new auto idle shutdown helps the machine to further decrease fuel consumption, with the addition of a new neutral detection system reducing the risk of inadvertent operation.

A high resolution 177mm (approx.) TFT-LCD widescreen colour monitor features enhanced capabilities, and displays information in 26 languages for global support. It provides information on AdBlue® fluid level, eco guidance, operational records, fuel consumption history and utilisation information. Safety is further enhanced through Komatsu's standard ‘Kom-Vision’ system, with display on the monitor of a real time bird's eye view of the PC228USLC-11's immediate surroundings. This helps to avoid jobsite incidents and accidental movement at start up.





IT'S ALL ABOUT YOU

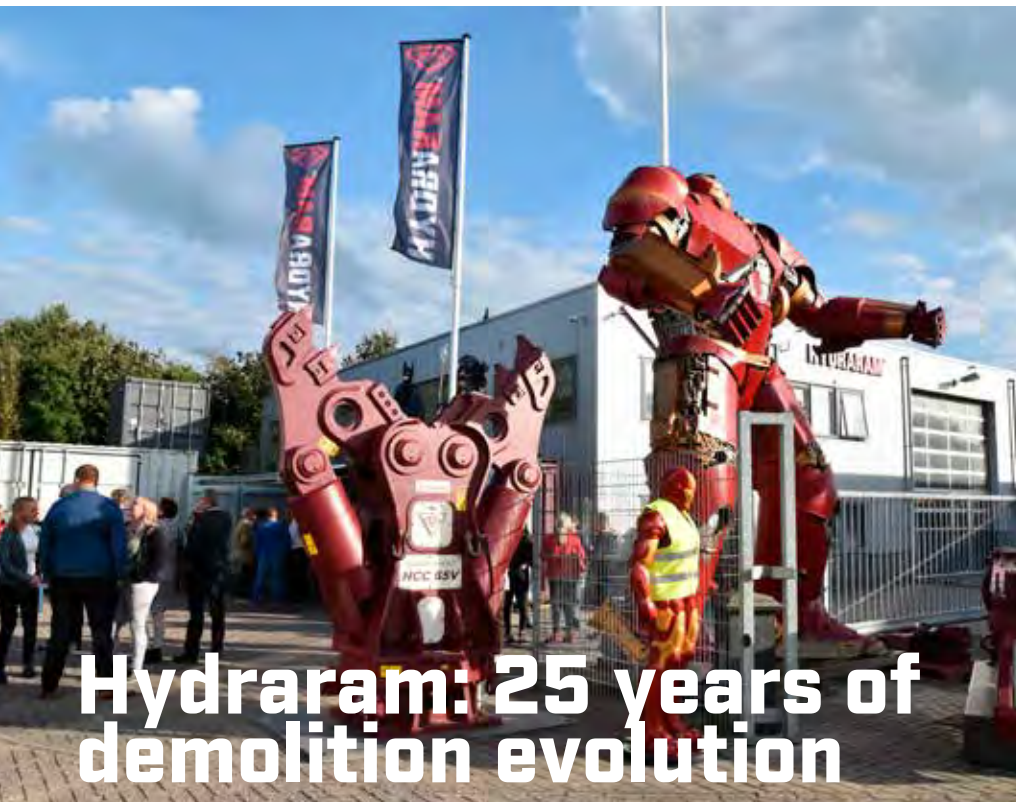
At Pullman Ermator we build powerful machines that get the job done well. What's more, we make sure that our machines are kind to your body.

All of our models have a H13 filter fitted as standard. The filter makes sure that even the finest of dust, such as silica and stone dust, stays in the machine rather than ending up in your lungs. The machines are also low in weight, have ergonomic handles and wheels – all for the sake of your back.

Your work environment shapes our product development. We wouldn't have it any other way.

pullman-ermator.se





Hydraram: 25 years of demolition evolution

On 15 September, the supplier of excavator attachments for demolition, recycling and agriculture professionals, Hydraram, celebrated its 25th anniversary by throwing a gala party at its headquarters in Surhuisterveen in northern Holland. Apart from some 250 visitors from all over the world, including family and friends, the party featured full size dinosaurs and a crew of super heroes as very special guests. Andrei Bushmarin reports.

Milestones

The company was established in 1993 under the name of Demolition Tools to distribute demolition and recycling attachments in Holland and neighbouring European countries. After a few years, the original firm was split into Demolition Tools B.V. and Demolition Tools Rental B.V. In 2004, Hydraram B.V. (as we know it now) began its operations. All these limited enterprises ("B.V." stands for "Ltd" in the Dutch language) are still owned by the mother company Demolition Technology Europe B.V. In 2006, Hydraram set up a branch office and a workshop in Rees, Germany, under the name of Hydraram Deutschland GmbH. Three years later, the Dutch company opened a second office and a factory with a ground area of 34,000m² east of Berlin. It became Hydraram's headquarters for Germany and Eastern Europe.

Global player

Today Hydraram is an established major supplier of demolition and recycling solutions to the European continent. Domestically, the company enjoys a solid market share of 15%, but its main focus has always been on overseas markets. Now Hydraram has built a Europe wide dealer network, with Germany, Austria, Switzerland and Scandinavia being the biggest buyers of the company's attachments. In the far flung

territories such as Australia, New Zealand and the Americas, Hydraram still sells predominantly to end users, while simultaneously trying to develop its own distribution networks there. In 2017, the company's turnover reached €7M, with the forecast for this year being estimated at €10M.

Keep staying ahead is the goal!

When asked about its short to mid-terms plans, Hydraram's founder and managing director Peter Wassenaar said that the company intends to keep following the path it chose decades ago. In the course of the past five years, Hydraram invested some €2.5M in setting up an extensive rental fleet for outsize demolition attachments to be rented out throughout Europe. The Dutch supplier will also continue working in close cooperation with the European Demolition Association, and some of the biggest demolition firms in Germany in terms of new product development. As part of this strategy, Hydraram is going to participate in the think tank 'Equipment for Demolition' organised by the EDA in October. Designing of excavator attachments, fine tuned to the needs of specialist contractors that dismantle nuclear power plants, is another direction that the company is now actively pursuing. PD*i* is promised more news about this very shortly. Stay tuned in!

www.hydraram.com



Adamas runs an 'open house' for its Benelux customers


On 12-14 September, the Benelux based supplier and manufacturer of concrete sawing, drilling and surface preparation machinery and consumables, Adamas, ran an 'open house' for its domestic customers. PD*i*'s Andrei Bushmarin reports on the event.

Apart from being an effective marketing tool, 'open houses' are integral part of supplier-customer relations. Adamas proved it once again by inviting some 100 sawing and drilling contractors from Benelux to its headquarters cum manufacturing facilities in Maasdijk, Holland for demonstration and training sessions. The equipment on display included the latest dry coring system for up to 250mm holes in reinforced concrete, the new laser welded V-Max RAPIDO drill bits, designed and manufactured at the Adamas plant in Belgium, a three speed 75HP Tier 4 diesel floor saw from Lissmac, and a complete Pentrunder HF range of drilling, cutting and wire sawing machines. The dry coring system and V-Max drill bits proved to be the event's main attractions.

A special demonstration area was designated for surface preparation equipment, with special vacuum cleaners provided to remove dust. On the last day of the event, Adamas staff were supported by the product managers of Fischer Fixings and Lissmac Maschinenbau companies. The outside area was also used for practical one day training sessions in concrete sawing and drilling techniques. By arranging these sessions, Adamas tries to address the issue of the lack of work experience that young operators suffer from. The Dutch company offers training courses in wet and dry core drilling, hand held sawing, wall and floor sawing. Apart from demonstrations and trainings, Adamas used the event to present its new corporate images and logos. The next rendezvous between Adamas and its clients will take place at Bauma 2019 in Hall A1, where Adamas is going to celebrate its 40th anniversary.

www.adamas.pro



WE BUILD
CUTTING UNITS
THAT INSPIRE 



MOTOR PROTECTION

Special valve technology protects the hydraulic motor

**LONGEST EXPERIENCE
ON THE MARKET**

Developed by Webster Technologies

MADE IN GERMANY

Components are produced in Germany

EXTREMELY HEAVY-DUTY

For the toughest jobs

Rokla GmbH

Hauptstrasse 197 · 74595 Langenburg · Germany

T +49 7905 941 99 0 · F +49 7905 941 99 20

info@rockwheel.com

www.rockwheel.com



airtec VISTAFLOOR®
**THE SMART TECHNOLOGY
FOR SURFACE PREPARATION**



MILLING, SCARIFYING, PLANING AND REMOVING ON

- Concrete
- Asphalt

BS-825-RC



**REMOTE-CONTROLLED
GRINDING AND POLISHING MACHINE**

- Unique patented planetary system - 3 Tool holders
- High operator comfort
- Excellent machine performance
- With water tank and extra weight

With AIRTEC machines you work smarter not harder!

All equipment with dust collection systems!

airtec
TOUGH STUFF 

FOR SURFACE PREPARATION
www.airtec.ch - info@airtec.ch



INNOVATIONS

key to success of bauma CTT Russia 2018

For the first time under its new name of 'bauma CTT Russia', the 19th international trade fair for construction equipment and technologies was held successfully from 5–8 June at the Crocus Expo IEC in Moscow, Russia. The event surpassed the previous year's results in terms of visitor and exhibitor numbers.

A total of 586 exhibitors, an increase of 4% when compared to last year, from 26 countries, showcased their latest products and innovations aimed at the Russian and CIS market on 60,000m² of exhibition space. The top ten exhibiting countries represented, in order, were Russia, China, Germany, Italy, Turkey, Finland, Spain, Korea, Belarus and Belgium, with four country pavilions from China, Finland, Germany and Italy respectively. The exhibition attracted 22,681 visitors (an increase of 10% on 2017) coming predominantly from Russia, Belarus, Kazakhstan and other CIS countries. Stefan Rummel, managing director of Messe München, reflected on the highly favourable results: "The efforts we have undertaken to further increase the attractiveness of the trade show resulted in an increase not only in the number of professional visitors but in their quality too."

The latter point was confirmed by some of the exhibitors. Mikhail Goncharov, marketing manager at

Putzmeister, stated: "We had more professional visitors at our booth than last year." Alexander Chirkov, commercial director of XCMG, adds: "After missing CTT last year, participating in this major international exhibition was a priority. All the equipment presented at our booth was sold to clients. We are going to take part again next year." Engin Barutcuoglu, export manager at Hidromek, commented: "We are satisfied with the results of the show. Next year we are going to double our space and present new models."

The trade show also attracted officials from the Russian regional construction ministries, thus emphasizing its leading position for the industry in Russia and the CIS. "We are happy that through our work, and continuous exchange with regional authorities, we were able to welcome many of them at the show. In future, we plan not only to continue our work in this area, but even to extend it", explains Andreas Lettl, general manager of CTT Expo LLC.

New initiatives meet exhibitors' demands

For this year's exhibition, the largest construction industry event in Russia came up with a number of innovations which proved to be productive from the start. Shortening the duration of the trade fair from five to four days led to a greater concentration of visitors from the trade, which was much appreciated by the exhibitors. Also for the first time, a demonstration area was set up in the open air section where exhibitors such as AST (dealer for John Deere), Manitou, and RusBusinessauto (dealer for SDLG), to name but a few, presented their products in action. Roman Tolmachev, brand manager at Wacker Neuson,

said: "We greatly appreciated the idea of demonstrating the equipment live. We were able to highlight particular advantages of our machines; this is simply

not possible in a static presentation on a regular stand." Also at the open air area, WorldSkills, an international non-profit movement which aims to enhance the reputation of the professions, demonstrated the competence of young professionals in the disciplines of concrete construction, and maintenance of heavy equipment to a wide audience, with the companies Doka and Volvo CE providing materials and equipment.

New initiatives were also reflected in the support programme. A conference was held on 'Construction equipment industry in transformation: drivers of success,' by the Association of European Business (AEB). This brought high level speakers together from politics, associations, and key industry players such as Caterpillar, JCB and Volvo CE. Trends and tendencies in the construction equipment market in the Russian Federation and Eurasia were also discussed, followed by presentations of innovative technologies designed for the future of the industry. The latter included unmanned technologies and electronic passport systems for self-propelled vehicles.

bauma CTT RUSSIA 2018 again received official support from various national authorities and professional unions. These included the State Duma Committee for Economic Policies, Industry, Innovative Development and Entrepreneurship; the Ministry of Construction, Housing and Utilities; the Russian Union of Builders; Moscow's Department of Urban Development Policy; the Committee for Entrepreneurship in Construction, and the Chamber of Commerce and Industry of the Russian Federation. Additionally, and new this year, were the sponsors Sberbank, Russia's leading bank, and the insurance company VSK.

The next bauma CTT Russia, the 20th annual show, is scheduled to take place at IEC Crocus Expo, Moscow 4–7 June 2019.

Expressing myself. Done.

PREMIUM dry cutting saw blades with innovative technologies.
Long-lasting and reliable. With every use.

Find out more at www.tyrolit.com



Premium grinding tools since 1919
www.tyrolit.com

TYROLIT

INTRODUCING **DURATIQ™ 5**

AN ULTRA-COMPACT POWER PACKAGE



The all-new DURATIQ 5 is a floor grinder with unmatched versatility for professional users. With its ultra-compact size, it's a powerful tool for all types of grinding jobs in various environments, but without compromising on DURATIQ's unique technology. Experience a machine that combines power and versatility with unmatched ergonomics.

www.duratiq.com

