

News

**BROKK INTRODUCES
THE WORLD'S
'MOST POWERFUL
DEMOLITION ROBOT'**

Page: 44

Special Feature

**LOADS OF NEW
CRUSHERS,
SCREENERS
AND SHREDDERS**

Pages: 48-54

Special Feature

**BIG TOYS FOR
LOCKDOWN BOYS**

Pages: 58-65

News

**OUTSTANDING
RESULTS REPORTED
WITH THE TYROLIT
BUMP CUTTING AND
GRINDING BLADE**

Page: 68

Shows

**WORLD OF CONCRETE
RETURNS TO
LAS VEGAS**

Pages: 82-84

Site Report

**CONTRACTOR
RENOVATES
FLOW CONTROL
STRUCTURES USING
A KEMROC DRUM
CUTTER**

Page: 22

Special Feature

BREAK(ER) TIME

Pages: 25-28

News

**BHS-SONTHOFEN
'ROTOSHREDDER'
CHOSEN BY WASTE
MANAGEMENT
COMPANY**

Page: 30

Site Report

**INNOVATIVE
ROBOTIC SOLUTION
PROVIDES
PRODUCTIVITY**

Page: 42

**DRUM UP YOUR
BUSINESS**

Pages: 35-36



THE MOBILE WITH APPS YOU'LL LOVE.

CUT ASSIST platform



DST 10-CA
electric wall saw



DD 350/DD 500
coring system



DST 20-CA
electric wall saw



DSW 1510-CA
electric wire saw

CutAssist the electronic assistant raising your sawing productivity is now available for all sawing applications. The new DSW 1510 CA electric wire saw with automatic wire tension and power control brings you new found freedom thanks to wireless remote control.





ONLY WIRE

WIDECUT

18:19



**BEYOND EXPECTATION
ONLY WIRE !**



Groove



Ø15.0*40 bpm

Steel



Ø10.2*48 bpm

Concrete



Ø10.5*40 bpm

Finish



Ø9.0*48 bpm

www.widecut.com



Professional Demolition International Magazine

Address: P.O. Box 786,
SE-191 27 Sollentuna, SWEDEN

Visitors address:
Skillingevägen 14A, SE-192 71 Sollentuna, SWEDEN

Phone: +46 8 631 90 70

E-mail: info@pdworld.com

Website: www.pdworld.com

ISSN Registration: ISSN 1650-979X

EDITORIAL STAFF

Editor-in-Chief

Jan Hermansson, Jan.Hermansson@pdworld.com

Assisting Editor-in-Chief

Anita do Rocio Hermansson,
Anita.Hermansson@pdworld.com

Editor: Vitor Hermansson, vitor@pdworld.com

Editor Europe: Mikael Karlsson,
mikael.karlsson@pdworld.com

Editor North & Central America
Jim Parsons, jim.parsons@pdworld.com

Editor South America
Luiz Carlos Beraldo,
luizcarlosberaldo@gmail.com

Editor Russia & Eastern Europe
Andrei Bushmarin,
andrei.bushmarin@pdworld.com

Editor Africa
Kevin Mayhew,
designmp@iafrica.com

SALES OFFICES

International Sales Director

Germany/Austria/Switzerland/UK & Ireland
/BeneLux/Finland/France/Spain/Portugal and Italy
Andrei Bushmarin
Phone: +7 921 949 27 81
E-mail: andrei.bushmarin@pdworld.com

Sweden/Norway/Denmark/Liechtenstein/North
America/South America
André Hermansson
Phone: +46 (0)8 631 90 70, Mobile +46 (0)70 979 04 03
E-mail: andre@pdworld.com

Australia/New Zealand/Asia Pacific/Korea/Japan
and rest of the world:
Contact PDI editorial office in Sweden
Phone: +46 (0)8 631 90 70, Mobile +46 (0)70 979 04 03
E-mail: info@pdworld.com

Publisher
Jan Hermansson

The magazine PDI, Professional Demolition International is published five times per year with a worldwide circulation of 10000 copies. The annual airmail subscription rate is US\$ 45. All subscription correspondence should be directed to: The subscription department, SCOP AB, P.O. Box 786, SE-191 27 Sollentuna, Sweden. PDI is mailed by second class postage. ©Copyright SCOP AB 2000-2020

Cover picture: Kemroc

PDI Magazine is a member of the following associations:



CONTENTS

PD*i* • issue no. 2 Mars - April 2021 • Volume 21

REGULARS

Editorials

- 6 Training saves lives and prevents injuries
- 8 The world is slowly opening up!
- 10 'The end of life of industrial facilities'

Associations

- 6 HCI, new member
- EDA welcomes BRV as a new member
- Astillo, new member
- IACDS holds its first webinar
- 8 EWJI welcomes Derc Salotech
- Altena Group joins EWJI
- Gerotto Federico new member of EWJI

Business

- 10 Doppstadt mourns passing of company's founder
- RecyclingAKTIV and TiefbaulIVE put back
- 12 New organisation for Portable Power EMEA
- bauma Conexpo Africa cancelled
- Tana celebrates 50 years
- 50th anniversary of the tracked carrier
- 14 Simex looking to the future
- Doppstadt Systemtechnik to be renamed
- 17 Komatsu begins 100th anniversary
- Dr. Karl Tragl new chairman
- CECE releases Annual Economic Report
- Financial solidity and continued investment
- 18 Introducing HCME's new president and chairman
- Construction equipment sector secures jobs
- Bonfiglioli 'loTwins' project wins award
- 20 Generation Change at Hilti
- bauma 'Innovation Award 2022'

Jobsite Report

- 22 Contractor renovates flow control structures
- 41 Dismantling on the former RWE site
- Wachtberg Kompost relies on the 355 E
- 42 Innovative robotic solution provides productivity
- 72 Erkat transverse drum cutters
- Dry stone walling becomes more structured
- Arjes shredder shows potential in Israel
- 79 Servisa and Indeco partner up

News

- 30 BHS-Sonthofen 'Rotoshredder'
- 32 Metso Outotec launches 'Nordtrack'
- Doosan aims for top spot
- The new 'R-Series'
- First Bobcat compact wheel loader
- 38-39 Beilite Chinese hammers for Europe



- 44 Wacker Neuson Group receives TÜV Austria seal
- The new 'R2-Series'
- The world's 'most powerful demolition robot'
- Concrete Show South East Asia 2021
- 47 Himoina generators for stationary applications
- Doosan 'XiteCloud'
- 56 'Best performance' in 80t class
- 'Revolutionary' dust suppression system
- 66 bauma postponed to October 2022
- New FR200 'Genus' scarifier from VonArx
- 68 Cummins B6.7 reduces running costs
- Outstanding results
- New Lavina 'Elite' dust extractors
- 70 The best of both worlds
- 74 New 'transparent bucket' wheel loader
- Diesel free with RM 120X hybrid
- Kohler welcomes new China Tier 4 regulation
- 76 Next generation Panther T14R
- Largest short radius excavator
- Epiroc to acquire South Korean manufacturer
- 86 BDB 8295
- Cordless dry coring up to ø102mm
- Lissmac 'Compactcut' 900 P/T
- 88 Hilti elevating sustainability
- The all new Dehaco DTS220 floor stripper
- 90 EvoQuip launches revamped 'Bison 120'
- New mobile app for 'DoosanCONNECT'

Hydrodemolition

Robotic hydrodemolition helps

Shows

WOC to return to Las Vegas

Special Features

- 25-28 Break(er) time
- 35-36 Drum up your business
- 48-54 New crushers, screeners and shredders
- 58-65 Big toys for lockdown boys

TGD® Diamond Tools from TYROLIT

 Highest quality Made in Austria



TGD®
TECHNOLOGY



TYROLIT diamond tools with TGD® technology feature intelligently distributed diamonds that enable even load distribution, optimised cooling and a constantly high cutting performance.

- + Long lifetime
- + Enhanced efficiency
- + High cutting ability
- + Fast availability due to production in Austria

Premium grinding tools since 1919
www.tyrolit.com

TYROLIT

Training saves lives and prevents injuries

On a sunny Saturday in April, a fatal accident occurred during non-static demolition work on a construction site on which we were entrusted with the core drilling and sawing work. A young man tore down a 4m high brick wall under cramped conditions according to the following principle: 'I will make a hole below and if the wall collapses I will run away'. It goes without saying that this cannot go well. The fact that the consequences are so tragic is of course more than regrettable, and above all, so avoidable. I have thought a lot about it since I found out about this accident, but one question that concerns me is this: how do you come up with such an idea? I've also thought about this a lot and always come to the same conclusion: there is a lack of training. Sound training is important and is the alpha and omega of sensible and, above all, safe work.

Folks, what we do, every day, are often tasks so dangerous that I cannot emphasise the need for training enough: do an apprenticeship, do your training and then you do your job professionally. Bosses, send your operators to be trained properly and you will get employees who perform well on the job site! I'm sorry, but I just had to get rid of that.

Although the number of vaccinations is now increasing, even here in Europe, an end to the travel restrictions is not in sight at this point in time. In this context, the news that bauma will be postponed from April 2022 to October 2022 is a good news as it gives us reasonable hope that we can all meet again at the bauma in Munich during October 2022. The bad news: the Oktoberfest will certainly not take place at the same time.

Please stay safe and get your vaccination!



Michael Findeis,
President of IACDS



IACDS HOLDS ITS FIRST WEBINAR

The International Association of Concrete Drillers and Sawers, IACDS, has held its first webinar. The topic of the webinar was the 'ÖNorm', the Austrian standard for concrete cutting. The webinar was led by Roderich Braun of Braun Maschinenfabrik, together with Bernhard Seidl and Georg Lahofer of the Austrian concrete drilling and cutting association, VBS.

The speakers discussed the ÖNorm standard and the importance of standards and norms within the industry. Webinars hosted by IACDS are part of a series of initiatives to continue with the dissemination of activities and services developed by IACDS members. The ÖNorm webinar will be available on the IACDS website (free to access for members).



SERVICES IN CLEANING WASTE & CATALYST

The European Water Jetting Institute (EWJI) welcomes HCl as a new member

HCl is a specialist company in the field of industrial cleaning, with more than 25 years of experience. It currently has a total of 330 highly motivated employees. The company's activities focus on industrial cleaning, waste and catalyst, and thanks to its specialism (developed in house)

and skilled employees, it is able to provide highly qualified work. HCl is also a highly conscious when it comes to safety and security, attaching great value to the safety and health of its people, preventing damage to the public, installations, machines and the environment.



EDA welcomes BRV as a new member

The EDA newest member is the Austrian Construction Materials Recycling Association (Österreichischer Baustoff-Recycling Verband, BRV) which was established in 1990 by 14 enterprises. It is a voluntary association of recycling companies and represents the interests of the construction material recycling industry. It now has 60 members, acts nationwide and across industrial sectors. It envisions itself as a contact for private and public customers/federal authorities, provinces, municipalities,

special associations and Life Ministry in the matter of construction material recycling. Its membership is open to enterprises producing recycled construction material or acting in the area of separation, sorting and reuse of recycled construction materials. Legal representatives of the construction industry; and other legal and natural persona willing to encourage the objectives and purposes of the association through associate membership, are also welcome as members.

The European Demolition Association welcomes Astillo as a new member

Astillo is a company that has been involved in asbestos removal for over 20 years. However, it has continually developed, creating new machinery to meet the growing demand of this nascent and rapidly growing market, with Astillo's machinery being designed by field engineers in close collaboration with site operators. In fact, the equipment developed are the result of two decades of experience in removing surface contaminants such as asbestos, lead, polychlorinated biphenyls (PCB) and radioactive materials.

Thanks to their design and efficiency, the machinery provides customers with the best solutions for the treatment of contaminated surfaces, and also provides maximum productivity in compliance with standards and minimises dust emissions that are captured at source. For example, chip machines are equipped with tools designed to meet most surface carrier/contaminant components on construction sites, paint on concrete, glue on pavement, bitumen on cement, glue on steel, etc.

LAVINA

by  **SUPERABRASIVE**

POWER TROWELS | GRINDERS | DUST EXTRACTORS | TOOLS



**complete solutions for concrete
grinding, polishing and maintenance**

IT'S EASY WITH LAVINA.

superabrasive.com



THE WORLD IS SLOWLY OPENING UP

I think I can see a dim light at the end of the tunnel. Vaccination around the world has started, albeit rather late in many countries. Some countries have been very good at vaccinating their populations, such as the United States, where many have already received their second dose. In Europe, however, things are slower and in Sweden, where I am located, the goal now is for everyone who wants to have their second dose to have it by the end of September.

But in parallel with the vaccination programmes, the pandemic continues to spread and claim lives, meaning that it is far from over. The prevalence of new virus mutations raises concerns about whether the vaccines protect against these developments, or whether supplementary vaccinations will need to be carried out. All of this means that the pandemic and its results are far from over. Even when vaccinated, we must continue to follow our authorities' rules and recommendations to keep our distance, wear face masks, nor to meet others if you or someone in your family is ill, etc.

The industries that PDi Magazine covers and the many business people and manufacturers that we are in regular contact with do not testify to a 'business as usual' situation, but rather doing what they can to continue with business. We have however noticed a clear difference for the better since the vaccination programmes started on a broader front, with the market slowly picking up. But after all, it has never been completely dead even when we had no vaccine in sight. Manufacturers and contractors in our industry managed to adapt to the situation and find new ways to carry out their contracting projects and meet with their customers. Digital meetings have become commonplace and become a tool that works, and I am sure that we will see them much more when the pandemic is over.

Many companies have also noticed that reduced costs in travel, hotel accommodation, trade fair participation and other activities are actually making a difference to their books. But in the long run, meeting customers digitally and not at trade fairs is not seen as a satisfactory way of continuing. People understand that the current pandemic induced situation is exceptional, but sooner or later we must return to a work pattern similar to what we experienced before the pandemic; even if we need to learn to follow new types of restrictions when we finally meet up. Thus in Europe, work is being done to design a digital vaccine passport that will be a requirement to present when, for example, participating at trade fairs.

In this issue of PDi you will find a lot of interesting articles about new products on the market as well as several interesting features. There is also information about the World of Concrete (WOC) show which will be held in Las Vegas in June. WOC is actually the only trade show in our industry that is to be held during the first six months of this year. During the autumn, though, it is believed that quite a number of trade shows are planned to be held around the world; that is unless we see some dramatic changes in the pandemic. In that case we are back to square one again.

My advice to you is to continue to follow restrictions and protect you and others from becoming infected as the best ways to protect you and your family, and ensure that we return to some kind of normality, sooner rather than later.

Jan Hermansson
Editor-in-Chief
jan.hermansson@pdworld.com



The European Water Jetting Institute, EWJI, welcomes Derc Salotech as a new member

Providing the best solutions, products and nozzles for high pressure water jetting is the core business of Derc Salotech. The company services thousands of customers and organisations in more than 40 countries, being committed to providing the best solutions and services to its customers. As an OEM company, it develops and launches new products and innovations that contribute to a safer and more cost effective ways of water jetting for the industrial cleaning industry. The company further believes clients' satisfaction is the key to success and therefore invests in operational excellence, good relationships and guarantee excellent added value to clients' process. The team – backed by the organisation and mother company, Derc Waterjetting - is fully committed

to providing customers with state of the art knowledge, solutions and services that define and improve their operational success.

Derc Salotech offers total solutions, systems and all necessary accessories for high pressure water jetting. With a large number of UHP products in stock from leading international manufacturers and with innovative product designs and tailor made solutions from its own R&D department, Derc Salotech operates as the international front office of Derc Waterjetting. DERC Salotech operates from two locations in the Netherlands and Germany.



Altena Group joins the European Water Jetting Institute, EWJI

As a new member of the EWJI, the Altena Group wants to reinforce its status as a service provider that offers customised service and solutions, with the Altena Group adapting to customer requirements. The knowledge that company acquires is used and shared everywhere, openly and transparently. In this way, the client always remains in control of his own installations, with sustainability being of paramount importance, with the Altena Group doing

everything possible to prevent waste and depreciation. The company does this by maintaining, renovating and upgrading at component level, offering specialist cleaning and thinking along with solutions within existing systems. Depreciation no longer exists in the future, but maintenance that extends life span does. Getting the most out of installations through efficiency, energy, comfort, no malfunctions is what Altena Group strives for and will realise for all its clients.



Gerotto Federico new member of EWJI

Gerotto Federico is active throughout Italy in the sale and rental of suction excavators and mini robot excavators. Reliability and experience are the main characteristics that have seen the company become the only distributor in Italy for the suction excavators made by the German company RSP GmbH, and the first company in Italy to use the technology. Since 1998, Gerotto has encouraged the proliferation of these innovative machines, which provide considerable advantages compared to traditional techniques, and are often required for competitive public tenders.

Development and innovation are assured by several decades of experience gained in the field of suction excavator applications. For this reason, Gerotto developed the mini excavators and small robots that work as tools during aspiration works, digging and

reclaiming operations. They work especially well in confined spaces and dangerous environments, for example in mines, refineries and industrial plants. The production of mini excavators projected the company on to the international market, leading it to important collaborations with European, Asian and American companies, and creating a large network of distributors worldwide.

Gerotto Federico is specialised not only in production, but also in operations, combining mini excavators with suction excavators, industrial aspirators and vacuum trucks. Gerotto's mini excavators, in fact, are highly versatile and can be combined with suction machines of any kind. In addition, Gerotto has designed a complete range of explosion proof products (with ATEX certification) to work safely in explosion risk areas.

ZENESIS

WORLD'S MOST ADVANCED
PATTERNED DIAMOND TECHNOLOGY

DESIGN
YOUR OWN
PERFORMANCE

□ DYNAMIC □ COMFORT



EHWA DIAMOND IND.CO.LTD. www.ehwadia.com | salesinfo@ehwadia.co.kr | Tel 82 31 370 9300 Fax 82 31 370 9191



'The end of life of industrial facilities' to be next EDA guide

To build a strong and long lived industry, it is important not to stop developing in ones work, not to get too comfortable, and be aware of the importance of adapting to changes and new times. It is thus essential that we learn how to look around, listen and detect problems and points of interest, in order to offer solutions almost before the needs arise.

The EDA tries to actively listen and answer every question that arises among professionals in the demolition sector, attempting to do this in many ways. One of them is the publication of informative guides, one of the association's main lines of activity in 2021. In addition to the publications mentioned previously in EDA bulletins, such as the guide about attachments and carriers for demolition and recycling, the EDA is working on other publications of interest, such as a guide titled, 'End of life of industrial facilities', which is already being produced.

This guide is aimed at asset owners and customers and will focus on the dismantling of industrial plants (chemical, oil and gas, nuclear etc.), intending to collect the best practices of the demolition industry in these activities. The publication will be prepared based on the progress made by the working group of the same name, whose activities began this March. The work of this group will be divided into two phases: a first phase (between March and October 2021), focused on the development of the aforementioned guide, and a second phase (between October 2021 and March 2022), in which the focus will be on the dissemination of the publication.

This means that those interested will have to wait until the end of this year to be able to consult the guide and access the information found within in its pages, but the EDA believes that the wait will be worthwhile. In the meantime, of course, the EDA will continue working on other projects, including the aforementioned guides on attachments and carriers, which will be launched in April and May, and the next European Demolition Industry Report, which is already underway.

About EDA

The EDA was founded in 1978 and is the leading platform for national demolition associations, demolition contractors and suppliers. The EDA has a strong focus on developments in Europe, which are of interest to the demolition industry.

info@europeandemolition.org
www.europeandemolition.org



Francisco Cobo, President of EDA, European Demolition Association



Doppstadt mourns passing of company's founder, Werner Doppstadt

Doppstadt Group employees have expressed deep sadness at the passing of the company's founder and long-time CEO Werner Doppstadt who died on 20 April, 2021 at the age of 77. Werner Doppstadt is survived by his wife Hedwig, his son Ferdinand and his family.

In the course of nearly five decades as the company's CEO, Werner Doppstadt led the family enterprise, which was established in 1965, to international success. Born in Homburg, Germany, he first transformed his parent's farm into an agricultural contracting business together with his wife Hedwig and his brother Josef. In 1970 Werner Doppstadt developed the 'Puma' cleaning machine and laid the foundations for the rise of the company to become a globally operating specialist of environmental and recycling technology. Today the group has around 700 employees, being one of the world's major machine manufacturers of recycling and environmental technology and resource recovery equipment. In 2012 Werner Doppstadt passed on the management of the enterprise to his son Ferdinand.

Doppstadt Group employees will remember Werner Doppstadt as a passionate developer and CEO. He was a man who always tackled projects with extraordinary courage, completing them with strong support from his wife and brother. As a mechanical engineer, Werner Doppstadt could mainly be characterised by his curiosity, his innovative spirit and his foresightedness regarding customers' needs and market requirements.

Keeping an attentive, analytical eye on his environment, he led the group of enterprises to success, with his catchphrase of 'I have an idea' being synonymous with his leadership style. He always focused on possibilities, not on problems, and invested his whole energy and financial resources in the further development of the business.

Thanks to his courage and entrepreneurial spirit, Werner Doppstadt was held in high esteem by the employees and enjoyed their confidence. His customers and suppliers valuing him as a competent partner. With his sense of humour and pragmatism, he was a well-liked employer providing valuable support to his team.



RecyclingAKTIV and TiefbauLIVE put back to September 2021

Together with its advisory board, exhibitors and other associated parties, Messe Karlsruhe has taken the decision to reschedule its RecyclingAKTIV & TiefbauLIVE demonstration trade fairs for waste removal, recycling, road construction and civil engineering. The events will now take place from the 2 to 4 September 2021 on the grounds of the Karlsruhe Trade Fair Centre. For CEO Britta Wirtz, it was a sensible decision: "Despite the sophisticated and flexible hygiene and safety measures put in place, there is still no clarity as to when the trade fair industry will be able to get back up and running, even after the recent meeting between German state and federal leaders on 3 March. Our customers, partners and colleagues needed planning security for the event to take place as previously planned in June 2021. As a result, we have unanimously decided together with

our advisory board to reschedule the trade fair. We have found a new date that allows RecyclingAKTIV & TiefbauLIVE to fit into the business calendar and has been confirmed by our association partners."

RecyclingAKTIV & TiefbauLIVE was originally due to take place from 10 to 12 June 2021. "A trade fair requires several months of preparation for organisers, exhibitors and service providers alike. In other words, we need planning security. By postponing the event by twelve weeks, we hope that the situation will have improved to such an extent that we will be able to welcome as many visitors to the demonstration trade fair as possible. This will require secure travel, open hotels and a higher vaccination rate. We will also use the extra time to implement the German government's quick test strategy," explains Wirtz.

www.messe-karlsruhe.de



MEET BROKK 900

THE WORLD'S MOST POWERFUL DEMOLITION ROBOT



Packed with demolition power, equipped with the heaviest Brokk hydraulic breaker and built to withstand demanding jobs, meet Brokk 900. All of this combined with reliable SmartPower™ makes the Brokk 900 the perfect solution for heavy demolition!



www.brokk.com

BROKK®

EVENTS

CSDA ANNUAL CONVENTION & TECH FAIR

March, 4-6, 2021
Fairmont Hamilton Princess Resort,
Hamilton, Bermuda

www.csdas.org

NDA ANNUAL CONVENTION 2021

March, 4-7, 2021
New Orleans, Louisiana

Demolitionassociation.com

BAUMA CONEXPO INDIA

April 20-23, 2021
Gurugram, New Delhi,
India

www.bcindia.com

WORLD OF CONCRETE 2021

June, 8-10, 2021
Las Vegas Convention Center
Las Vegas, USA

www.worldofconcrete.com

CONCRETE SHOW BRAZIL 2021

August 31 to September 2, 2021
São Paulo Expo, São Paulo, Brazil

www.concreteshow.com.br

DEMCON 2021

September, 9-10, 2021
InfraCity, Stockholm,
Sweden

www.demcon.se

BEBOSSA 2021

21-23 September, 2021
Willingen, Hochsauerland,
Germany

www.bebossa.com

THE ARA SHOW 2021

October 18-20, 2021
New Orleans, Louisiana

www.arashow.org

ECOMONDO 2021

26-29 oktober, 2021
Rimini,
Italy

www.ecomondo.it

FACHTAGUNG ABBRUCH 2022

March, 11, 2022
Berlin, Germany

www.deutscher-abbruchverband.de

BAUMA 2022

24-30 oktober, 2022
Messe München, München,
Germany

www.bauma.de

HILLHEAD

21-23 June 2022
Hillhead Quarry, Buxton, Derbyshire,
UK

www.hillhead.com

SAMOTER 2023

March, 2023
Verona, Italy

www.samoter.it



New organisation for Portable Power EMEA

The Portable Power business of Doosan Bobcat has announced a new global leadership structure to provide the company with increased efficiencies in terms of global operational footprint, global product platforms and other key initiatives. This change is aimed at streamlining the performance of Portable Power products within Doosan Bobcat.

Jan Moravec has been appointed as general manager, Portable Power for Europe, the Middle East and Africa (EMEA). Jan has been with Portable Power for over 18 years and is based at the Doosan Bobcat EMEA campus in Dobris in the Czech Republic. Jan Moravec commented: "I'm delighted to be taking on the new role of general manager for Portable Power EMEA. Our business has more than 100 years of experience in providing superior products and services for our customers, with a great team of people offering the drive, focus and passion to

continue this success. Our key goals for this year include the completion of our Stage V compressor range with the introduction of a new family of small compressors, enhancing our product offering for MEA markets and to continue to strengthen our dealership network and to fulfil all of our customer's needs in the EMEA region."

In his new role, Moravec will retain responsibility for product and programme management as well as taking on responsibility for sales and service, along with supply chain sales, inventory and operations planning and responsibility for the company owned stores in EMEA. Jan will report to Lance Mathern, vice president, Global Portable Power. As well as portable compressors for the construction, rental, quarrying and many other industries, the Portable Power range from Doosan Bobcat includes generators and lighting products aimed at the same markets.

bauma Conexpo Africa cancelled

Messe Muenchen South Africa, organisers of bauma Conexpo Africa, has announced that the trade show will not take place in 2021 as planned, being rescheduled to be held in Johannesburg, South Africa, from 13-16 October 2021.

Suzette Scheepers, CEO of Messe Muenchen South Africa, commented on the decision to reschedule the show: "Due to the challenges the industry is facing, and uncertainty in the market around the Covid-19 pandemic and associated travel restrictions, the bauma Conexpo Africa advisory board concluded that we could not guarantee the international stature and the usual return on investment of this show in 2021." The show traditionally attracts exhibitors from around the world and visitors from throughout Africa, providing a unique platform for international knowledge sharing and solution discovery.

Messe Muenchen Germany and industry stakeholders also expressed concern that South Africa is currently one

of the most travel restricted areas in the world, with more than 120 major restrictions and strict post travel quarantine rules in place. In addition, many European countries are under strict lockdown, making it challenging for travellers to leave their countries, with many companies also having internal travel restrictions for their employees.

Scheepers said the difficult decision to cancel the event this year had been made after in depth consultations with partners and industry stakeholders. "Our goal of delivering an optimal event experience to both exhibitors and visitors would have been challenged by the current uncertain situation. We thank our partners, exhibitors and the bauma Conexpo Africa community for their ongoing understanding and support. We would like to assure all stakeholders of an enhanced and exceptional industry event when bauma Conexpo Africa returns."

www.bcafrica.com



Tana celebrates 50 years

Tana's first 50 years have been marked by innovativeness and a pioneering spirit, with the Finnish company having developed product solutions and operating methods, with Matti Sinkkonen, founder of the original company Kone-Jyvä Oy, being a technical innovator and inventor. He understood from the outset that the Finnish domestic market was too small to support the efficient large scale production of landfill compactors, resulting in Tana being internationally focused since 1971. Production has long been outsourced to subcontractors, which has enabled the company to focus more time and energy on its customers and their needs enabling the company to be a pioneer in digital solutions, a field in which the company still thrives. The development of machinery and digital solutions continues, with Tana aiming to provide even closer support focusing on improving solutions for preventative maintenance. New partners will enable Tana to expand both its product range and sales network, as well as further develop its operations, with the open minded and innovative tradition that Tana has maintained for 50 years set to continue in the future.



Yanmar celebrates 50th anniversary of the tracked carrier

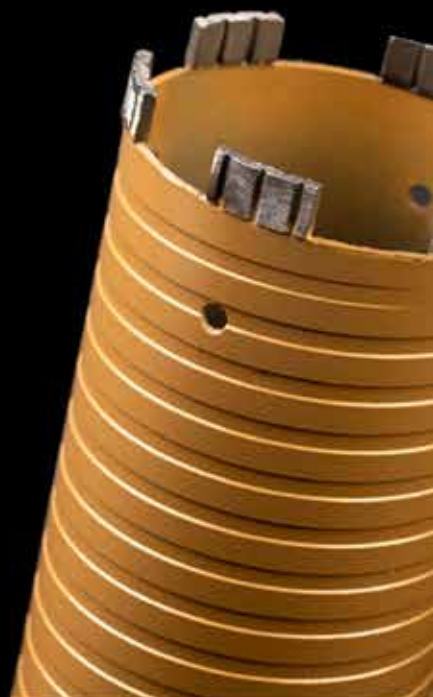
Yanmar will this year celebrate the 50th anniversary of the YFW500D, the world's first tracked carrier equipped with a Yanmar diesel engine. The original carrier used the undercarriage of a Yanmar rubber crawler combine harvester and added a cargo box to enable it to transport materials on soft ground. Created in 1971, the YFW500D was the world's first tracked carrier, being the first in a long line of quality products from Yanmar developed to meet the needs of the times.

Yanmar, a pioneer in compact construction equipment, will mark the celebration of this 50th anniversary of the tracked carrier by renewing the company's commitment to the development of high performance products and solutions that offer premium reliability and value for customers. Through Yanmar's contributions to urban development, including housing construction and infrastructure development, the company aims to realise a society where everyone can live with peace of mind.



HSD

Diamond tool that matters



HSD Europe GmbH Mergenthalerallee 77, 65760 Eschborn, Germany
www.hsdeu.com info@hsdeu.com +49 (0) 6196 96790 0



Simex looking to the future after 30 years in business

Simex was founded in 1991 in San Giovanni in Persiceto, Emilia. The company has continued to develop new attachments suitable for various fields of application gaining patents for equipment for road-works, infrastructures, utilities, demolition, construction and quarrying.

Simex keeps on growing, becoming well established in international markets, with production facilities being expanded in order to accommodate a wider product range. During its 30 years, the company has become a partner of choice for thousands of earthmoving industry professionals worldwide, now operating a production plant that covers a total area of 48,000m².

2020 however was marked by numerous challenges, some more difficult than others, which Simex addressed by investing further in facilities and logistics, increasing its R&D effort and focusing on developing its human resources. Today, 30 years since its inception, Simex boasts a state of the art production department, capable of producing up to 500 units per month during peak demand periods. A large amount of space is dedicated to testing equipment so as to ensure the highest quality standards with each area being reserved for a specific type of product.

At the end of 2019, an indoor logistics area of 7,500m² was opened to ensure increased stock capacity and, as a result, shorter delivery times. The new warehouse is just the latest in a series of structural developments which include automated vertical warehouses, whilst boring and robotic welding stations allow improvements in the quality of components, such as drums and cutting wheels, while ensuring high safety standards. A demonstration area has recently been relocated to allow for testing and ongoing product development, simulating all fields of application, whilst meeting rooms and offices have been redesigned to create a dynamic and interconnected work environment.

These structural developments have been complemented by a prompt customer and after sales service together with an extensive sales network covering over 80 countries. In its 30 years of operation, close relationships with local distributors and national importers have been developed, with a branch office in Russia being opened which was followed in January 2021 by another in the USA. In fact Simex believes that the proven reliability and engineering quality of its attachments systems from the commitment, passion and expertise of hundreds of people, throughout the world.



Doppstadt Systemtechnik to be renamed Allreco GmbH

As of 1 June 2021, Doppstadt Systemtechnik GmbH (DSG) will be renamed as Allreco GmbH with the aim of the new name being to establish the company as an independent brand focused on the development of stationary recycling systems. This will see Allreco operating separately from Doppstadt Beteiligungs GmbH, being a part of LIG GmbH from June onwards.

Doppstadt Beteiligungs GmbH has combined its Doppstadt Calbe, Doppstadt Umwelttechnik and DSG brands under one umbrella. Henning Strunz, managing director of DSG, explains: "The name Doppstadt has stood for innovative environmental technology for decades. It is firmly established in the market. Doppstadt Systemtechnik also benefits from this. However, the uniform naming also has its disadvantages, some of our prospective and existing customers do not perceive the DSG as an independent brand." This situation has

led DSG to therefore change its name. "The strategic reorganisation should help our customers to recognise Allreco as an independent brand with a focus on the development of recycling solutions for stationary use." The name change does not entail any internal or external changes in structure.

The machines and plants that Allreco develops will continue to be manufactured either by Doppstadt Umwelttechnik, or by a selected partner company of Allreco. Furthermore, the stationary recycling systems will continue to offer customers smart, complete solutions. Like DSG, Allreco GmbH is active worldwide, with a focus on markets in Europe, Japan, Korea and Singapore. For Strunz, one thing is certain: "Allreco is the clever combination of our many years of experience as a traditional family owned company and the pioneering idea of breaking new ground."

SOLUTIONS FOR LEADERS

MADE IN GERMANY

BAIER
Elektro-
werkzeuge



DUST FREE CHANNEL CUTTING!

Up to 50 mm (2") wide and up to 45 mm (1,8") deep in one cut

STRONGEST DRY CORING SOLUTION ON THE MARKET!

2-gear dry coring in concrete with rebar up to diameter 300 mm (12")

STRONGEST MIXER ON THE MARKET!

GIANT 120 - mobile mixing station for quantities up to 250 kg (550 lbs)



A MASTERPIECE

BEYOND TECHNOLOGY



OPTIMIZED DIAMOND ARRAY WHERE WE WANT IT!

ARIX technology allows optimized diamond particle array for the fastest speed and longest life



**SHINHAN
DIAMOND**

Masterpiece
beyond Technology

cs.en@shinhandia.co.kr

HEAD OFFICE [Republic Of Korea]
 21635, 13AE-10u, Namdong Industrial Park 375
 Namdong-dong-ro, Namdong-gu, Incheon, Republic of Korea
 T. +82-1600-4804 | F. +82-32-3614

GERMANY
 Mengenthalerallee 79-81, 65760,
 Eschborn, Germany
 T. +49-6196-761-0777 | F. +49-6196-775-874

USA
 SHINHAN DIAMOND AMERICA, INC.,
 900 S. Ajax Ave. City of Industry, CA 91748 U.S.A
 T. +1-626-363-9258 | F. +1-626-363-9259



WE CAN DO IT!

WWW.TREVIBENNE.IT

DEMOLITION AND SORTING GRAB PMZ SERIES.

Essential for the demolition of medium-sized structures and buildings, for the handling and targeted selection of materials on site and in landfills.

Feel The
TREVI**BENNE**[®]



Komatsu begins 100th anniversary commemorative activities

Komatsu Ltd. (president and CEO, Hiroyuki Ogawa) is set to celebrate its 100th anniversary on 13 May 2021. Established in Komatsu City, Ishikawa Prefecture, Komatsu is committed to quality and reliability, working to maximise the trust of customers, shareholders, distributors, suppliers, business partners and all other stakeholders. Its 100th anniversary is seen as a communication opportunity to enhance and disseminate its corporate brand and express appreciation to all stakeholders for their support over the years with Komatsu set to implement a series of commemorative activities. Looking to the next 100 years, Komatsu will continue to move forward with its stakeholders as it creates value through manufacturing and technology innovation to empower a sustainable future.



Dr. Karl Tragl new chairman of the executive board and CEO of Wacker Neuson SE

Dr. Karl Tragl will take on the role of chairman of the executive board and CEO of Wacker Neuson SE effective 1 June 2021. He follows on from Mag. Kurt Helletzgruber. "With Dr. Tragl, we have won an experienced and international leader with an in depth understanding of the mechanical engineering industry to steer our company," explains Hans Neunteufel, chairman of the Supervisory Board of Wacker Neuson SE. He continues: "He has a wealth of experience in internationalisation, which we can leverage to capitalise even more effectively on opportunities that arise for us on the global market."



CECE releases Annual Economic Report

The Committee for European Construction Equipment (CECE) has released its Annual Economic Report on the state of the European construction equipment sector. In 2020, the industry suffered less than expected, and views 2021 with a positive mind set.

Sales of European construction equipment fell by 6.4% in 2020. This seemingly modest drop is due to the performance of high volume light and compact equipment, whose sales were almost unaffected at -3%. In contrast, heavy construction machinery suffered a 19% fall in sales, in what emerged as a challenging year. These figures are the result of a combination of an anticipated cyclical downturn after years of growth and a slowdown in business activity due to Covid-19. Unlike previous years, earth-moving equipment, road equipment, concrete equipment and tower cranes experienced similar market patterns, despite the impact of strong sales of light equipment.

Presenting the report to the press, CECE president Niklas Nillroth focused on the positive aspects of last year's results and this year's expected outcome. "As we all know, 2020 was the most unexpected and unpredictable of years. From an economic point of view, it represented a year of disruptions with certainties and forecasts crumbling before our eyes. However, as you will see in our report, the construction and industrial sectors in Europe have shown a great amount of resilience and capability to rebound quickly, limiting the damages of the first semester. The foreseeable boost in construction and infrastructure activities from the European Recovery Plan represents another reason to remain optimistic for the near future."

2020 began in line with expectations, with a 5% market decline in the first quarter – a cyclical downturn that had been anticipated. However, in the second quarter, lockdowns across Europe began to take their toll and pushed the market to 28% below the levels of the previous year. The decline in sales in Q2 also reflected the impact during Q2 in 2019 when the bauma exhibition was held, with a usual short term boost in sales. With relaxation of lockdown measures in Q3, sales reached similar levels as 2019 and were flat year on year. The last quarter of the year saw the expected improvement in demand, and sales in Europe went up by 9%. This also reflected business postponed in the first half of the year materialising in Q4.

From a geographical perspective, market sales in most countries reflected the impact of

the pandemic and the lockdowns, but there were a few exceptions. Most notably, the Italian market reached the same level of sales as 2019, and the Turkish market recovered from its 2019 crash.

Outlook for 2021

While the short term macroeconomic outlook remains uncertain, the business climate within the European equipment industry remains positive. After months of improvement, the business climate index in CECE's Business Barometer survey is significantly higher in March 2021 than at the outbreak of the pandemic in spring 2020. A significant majority of manufacturers expects business to grow in the first half of the year, and the level of satisfaction with current business has also improved significantly. In addition, the order intake for European manufacturers has been growing year on year since December 2020 with European market sales showing clear growth. This is consistent with the improvement in equipment sales seen in Q4 2020.

A forecast of 5% growth in the European equipment market is a realistic assessment of prospects for 2021. However, against a background of continued uncertainty and high absolute levels of sales, even a flat market in 2021 would not be a disappointment. The world market is also likely to show moderate growth in 2021, but the volatility of the Chinese market and its significant influence on the overall outcome means that it is difficult to quote reliable figures for overall global growth levels. In the medium term, the construction equipment industry faces many substantial risks, including higher debt levels in many countries as public infrastructure investments will suffer when austerity measures must be put in place.

The CECE Annual Economic Report contains sections on the macro economic situation, the performance of the construction sector, the main markets and main segments of the European construction equipment industry. The report includes information from national CECE member associations, shedding more light on regional developments in the European construction equipment sector. The full report with detailed figures and graphs can be viewed and downloaded via CECE's website.

Financial solidity and continued investment despite Covid-19

The Hilti Group closed the challenging Covid-19 pandemic year of 2020 with a decline in sales of 9.6%, totalling €4.8B, and an operating profit of €658M (-7.0%). Nevertheless, investments in strategic initiatives continued as planned to ensure the long term success of the company.

Net income declined to €480M (-10.2%). Despite the decline in sales, the negative currency effect and ongoing investments, the return on sales (ROS) grew slightly and reached a new high of 13.7%. By contrast, the return on capital employed (ROCE) decreased by 3.4% to 16.4% due to the lower capital turnover. This was caused by a combination of the build-up of a higher liquidity reserve, the implementation of IFRS 16, a negative currency mix of the capital employed and lower sales. The free cash flow reached €415M (2019: €274M) leading to a cash flow conversion rate of 86.5%. The total cash position increased to €1.18B (2019: €1B). The equity ratio continues to be over 50%.

For the current year, the Hilti Group expects a moderate economic recovery, which will vary from region to region and depend heavily on the course of the coronavirus pandemic in the coming months. Despite these challenges, the company is adhering to its strategic objectives and will continue to invest significantly in innovative solutions and the digitalisation of its portfolio and its internal processes. The Hilti Group expects sales growth in local currencies in the upper single digit range, a continued significant negative currency effect and profitability at about the same level as before Covid-19.

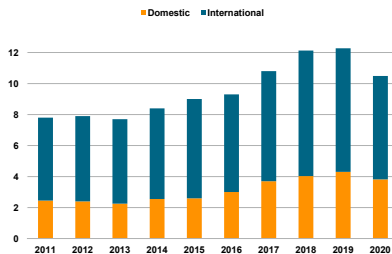




Introducing HCME's new president and chairman

Hitachi Construction Machinery (Europe) NV (HCME) is pleased to announce the appointment of Mr Takaharu Ikeda as its new president and chairman of its management board as of 1 April 2021. A broad base of domestic and international experience will prove beneficial to Mr Ikeda in his new role. "Hitachi Construction Machinery has given me the opportunity to work in sales, service, rental, computer systems and supply chain management," he explains. "Added to my invaluable experience of working in the USA and China, I am looking forward to becoming immersed in HCME's systems, customs and culture, and meeting the challenges that lie ahead."

Construction equipment turnover generated from German production in EUR billion



Source: VDMA

Construction equipment sector secures jobs in a difficult environment

The general meeting of VDMA Construction – Equipment and Plant Engineering on 3 March 2021 drew a positive conclusion for the past and current year. VDMA represents around 3,300 German and European companies in the mechanical and plant engineering industry, and discussed such topics as the economic situation, the importance of the European climate goals 2050 for the industry and the development of relations with the USA after the change of government. The

conclusion was that overall the situation is good, with the European CECE Business Barometer being at its highest level since the end of 2018. Germany will remain stable - at a high level - whilst the European market will recover, and the global market will also grow slightly. At the moment, the economic stimulus programmes are having an effect although in the medium term, there is a risk that the public sector will be able to invest less due to the high level of new debt.

Bonfiglioli 'loTwins' project wins Innovation 4.0 Award

On the occasion of the 15th A&T (Automation & Testing) 2021 Fair in Torino - dedicated to innovation, technologies and '4.0 skills' which was organised for the first time purely digitally - one of the winners was Bonfiglioli Riduttori, for its loTwins development. This uses data to enable SMEs to enjoy the benefits of modelling and prediction tools. The loTwins project is led and coordinated by Bonfiglioli and involves 23 partners from eight European countries. "Receiving this award is a source of pride for us, proof of the importance of the loTwins project of which we are coordinator. R&D, innovation and market orientation as drivers of our corporate activities are the elements that distinguish and guide our group. I consider the constant development of new ideas and strategies our competitive advantage and success factor," said Fausto Carboni CEO of Bonfiglioli.



RM NEXT LEVEL ELECTRIFICATION

30 YEARS' XPERIENCE – THE BEST IS JUST THE START

Reduce costs >

Increase efficiency >

Create flexibility >

Expand business opportunities >

Take responsibility >

Protect the climate >

RUBBLE MASTER HMH GmbH | Im Südpark 196 | A-4030 Linz | +43 732 73 71 17 | sales@rubblemaster.com

RUBBLEMASTER.COM



**TAKE ON
WHATEVER CHALLENGES
WITH OUR
DEMOLITION SHEARS**

EQUIP YOUR MACHINES WITH POWERFUL AND DURABLE TOOLS



Visit our website for more info
on our demolition range
www.arden-equipment.com





GENERATION CHANGE AT HILTI

The Hilti Group's success over the decades is strongly connected with its long term succession planning ensuring stability in key leadership roles and continuity. Entering a new phase, Hilti will undergo a major generation change over the next two years, given the age and tenure of certain long term serving key representatives. The timing of this change is synchronised with a review of Hilti's corporate strategy.

"We are very happy with the outcome of this succession planning cycle, providing the next generation of highly talented Hilti team members the great chance to formulate the future corporate strategy and to lead Hilti to the next level of sustainable success. It is satisfying to see that in the future board of directors the family will be represented again, underlining the character of a family company with its long term orientation and strong values," explains Michael Hilti, honorary chairman of the board of directors.

"The continued high quality and competence of our executive board and board of directors is very comforting. We are proud that we were again able to promote exclusively internal team members to our executive board. Team members with a proven record of leadership, high performance, strong people development and living our corporate culture. This is a practice we successfully adhere to since many years. With this generation change we are not only ensuring continuity in pursuing our strategic goals, but also trust and reliability for all our team members, our customers, our partners and our environment."

Over the next two years, the following leadership changes will take place: Martin Hilti Family Trust (Family Trust) and Board of Directors of Hilti Group will see Heinrich Fischer, after reaching the maximum tenure of 15 years on the board of directors and acting since 2017 as chairman, step down from his position at the end of 2022. Christoph Loos, who has served since 2014 as the CEO and since 2007 on the executive board, will take over as chairman of the Hilti Group. Pius

Baschera, after a 44 years long Hilti career, which saw the holding of key leadership positions including CEO and chairman of the board of directors, board member, trustee and acting as the speaker of the trustees of the Family Trust, will, after reaching the maximum tenure of 15 years, retire from all his functions at the end of 2022.

Marco Meyrat, a trustee of the Family Trust, president of the Hilti Foundation and a member of the board of directors, will take over the role of speaker of the trustees of the Family Trust as of 1 January 2023. Michèle Frey-Hilti, daughter of Michael Hilti, acting currently as the managing director of the Hilti Family Foundation, will join the board of directors in April 2022, representing the Hilti Family. Matthias Gillner, after 22 years in numerous leadership roles at Hilti, including being a member of the executive board since 2011, will join the board of directors and the Family Trust as trustee in January 2023. Kim Fausing, being an external member of the board of directors, reaching his maximum tenure, will step down from his function in April 2022. He will be replaced by a new external board member. Michael Hilti will remain in his role as honorary chairman.

The Executive board of the Hilti Corporation will comprise of Jahangir (Jan) Doongaji, who has been with the company since 2000 and has been a member of the executive board for eight years, will take over as the new CEO of the Hilti Group 1 January 2023. Stefan Nöken will leave the executive board at the end of 2021 due to tenure limits after 22 years with the company, and take on board

assignments in other companies and institutions. Tassilo Deinzer, currently the head of the Power Tools & Accessories business unit, will join the executive board as of 1 January 2022, assuming responsibility for the Fastening Technology & Fire Protection business area. Thomas Hillbrand, currently the head of the Measuring Systems business unit, will join the executive board as of 1 January 2022 assuming responsibility for the Electric Tools & Accessories business area. Felix Hess, currently the head of Finance and Controlling, will join the executive board as of 1 January 2023 being responsible for finance, human resources, IT and corporate development.

Members of the Board of Directors of Hilti Corporation as of January 2023

Christoph Loos, chairman (Germany), Daniel Daeniker (Switzerland), Carla De Geyseler (Belgium), Michèle Frey-Hilti (Liechtenstein), Matthias Gillner (Germany), Marco Meyrat (Switzerland), Barbara Milian Thoralfsson (Norway), New External Member.

Members of the Executive Board of Hilti Corporation as of January 2023

Jahangir (Jan) Doongaji, CEO (India/Switzerland), Tassilo Deinzer, Fastening Technology & Fire Protection Business Area (Germany), Felix Hess, CFO and Corporate Functions (Switzerland), Thomas Hillbrand, Electric Tools & Accessories Business Area (Austria), Avraham (Avi) Kahn, Markets Americas, Asia / Energy & Industry (USA/Israel), Joaquim Sardà, Markets Europe, Middle East, Africa / Strategic Marketing (Spain)



bauma 'Innovation Award 2022' kicks off on 3 May 2021

The Innovation Award will be presented at the bauma from 24-30 October, 2022, which is traditionally the opening event of the trade fair week. The award will be 'kicked off' on the 3 May 2021.

The entry process starts on 3 May and ends on 3 September 2021. All the necessary information concerning the terms and conditions of participation is available at: www.bauma-innovation-spreis.de. Applicants can submit their documents via the form on the web portal from 3 May onwards. In order to reflect technical progress and social as well as political developments, the interested parties are advised of the following categories:

- Category 1: Climate protection
- Category 2: Digitalisation
- Category 3: Mechanical engineering
- Category 4: Building
- Category 5: Research

VDMA Construction - Equipment and Plant Engineering and VDMA Mining, together with Messe München and the partner associations HDB, ZDB and bbs, are conducting the multi stage application process and hosting the awards ceremony at the Court Church of All Saints in Munich. Martina Scherbel, project manager of the bauma Innovation Award, will be happy to answer any questions concerning participation and procedures (martina.scherbel@vdma.org, +49 69 6603 1257).

VDMA represents around 3,300 German and European companies in the mechanical and plant engineering industry. This innovative industry is export oriented and predominantly made up of SMEs, employing around four million people in Europe, including more than a million in Germany alone.



Discover the benefits of Hydrodemolition

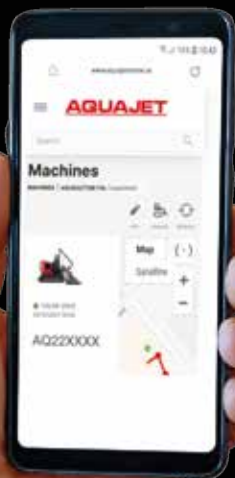
Our Hydrodemolition robot, the **AQUA CUTTER®**, is 25x faster and 3x quieter than handheld equipment while providing a 2,5x better bonding surface. The robot is easily stored inside our high-pressure pump, the **ECOSILENCE®**, that handles up to 3000 bar and features auto start/stop technology for greater fuel efficiency. The Ecosilence is compact, easy to transport and super silent.

Effectively and efficiently manage blast water with Aquajet's **ECOCLEAR®** water treatment system. The system is fully automated and capable of handling a flow rate up to 20 m3/hour. It reduces pH to 6-9 and turbidity to 20-40 mg particles/liter, making it possible to release or recirculate treated blast water.

When space is tight and a robot won't fit, our **ERGO** system is the answer. Designed for Hydrodemolition operations in confined areas, the Ergo completely replaces hand lance work on floors, walls or ceilings.

Finally, **AQUAJET ONLINE** is a cloud-based system for managing your equipment. With equipment tracking, real-time diagnostics, data collection and analytics, it makes critical data about your machine available at the touch of a button on your smartphone or computer.

Contact Aquajet today to learn how our cutting-edge technology can solve your jobsite challenges.



A Kemroc drum cutter working on the river barrage at Viereth on the Main.

CONTRACTOR RENOVATES FLOW CONTROL STRUCTURES

using a Kemroc drum cutter

The flow control barrage at the village of Viereth am Main (Germany) went through major renovation work with the pillars to the side of the weir having to be modified to fit the design of the new weir gates. To do this, specialist contractor Johann Bunte Bauunternehmung GmbH & Co. KG, used a Kemroc KR 120 drum cutter attachment mounted on a 35t excavator to carry out the work.

Dating back to 1925, the first barrage built on the river Main was at Viereth, being made up of three main components comprising of a lock for shipping to pass through, a hydro-electric power station and gated weirs. Combined, these components constitute a barrage whose main purpose is to control the flow of the river and maintain a constant water level.

Through regular use over the years, several components such as toothed racks, rims, and wheels became corroded and worn with other mechanical and electrical components needing modernising. Because breakdowns at the Viereth Barrage were becoming more frequent, a major, wide ranging modernisation project was started in 2014. To minimise disruption to marine transport and maintain a degree of control over the flow in the river, it was decided to renovate the two weir sections, one after the other.

The contracting company, Johann Bunte Bauunternehmung GmbH & Co. KG, played a major role on the project. Bunte, as the general contracting partner, in cooperation with a steel company, started work on the concrete sections located at the heart of the Viereth gated weir. These comprise of three 17m high pillars, between which are the weir gates with the lifting mechanisms attached to the sides of the pillars. These adjust the height of the gates to manage the flow and regulate the depth of water. The gates and adjusting mechanism had to be replaced as part of the renovation work. Due to the design of the new lifting mechanism, the concrete pillars had to be modified before the new mechanisms could be concreted in place. For the removal of the concrete it was decided that a Kemroc KR 120 rotary drum cutter mounted on a 35t excavator would be the ideal combination. It met the contractual specifications while promising to meet financial requirements.

Fast with low vibration

Drum cutters in the KR range from Kemroc are often used in demolition and tunnelling applications. They are

also used in concrete renovation and profiling, trenching and pipe laying, quarrying and underwater construction applications. The attachments are built for demanding applications and are fitted with high torque motors to develop extreme cutting forces. For the profiling work on the pillars at Viereth, the low vibration characteristics of the KR drum cutters was critically important.

Built in the 1920s, the pillars are made from a relatively fragile, mostly non reinforced concrete. In 1994 the surface layer had been removed and replaced with a mixture of sprayed concrete and mortar. According to the contractual requirements, the concrete removal process had to be carried out as carefully as possible to avoid any damage to

the rest of the concrete structure. In addition, all necessary precautions had to be taken to prevent unintentional removal of concrete which could result in disruption to the shipping lanes. Therefore the use of blasting, hammers or chisels for the demolition work were not allowed. The only options allowed for the removal of the surface layer of concrete were grinding or high pressure water jets.

"We decided to go with the drum cutter and excavator option, because the use of high pressure water jets would have been considerably more expensive and would have required extensive protection from flying material. In addition, we were able to carry out more work further down in the base of the pier with the drum cutter and progress promised to be quicker," explained Christoph Karsch, Bunte's site manager.

Gentle and precise concrete removal

The milling work was carried from the 6 to 29 April 2020. At the centre of activities was the KR 120 drum cutter attachment mounted on the company's own 35t excavator. Christoph Karsch chose this combination after consultation with the Bunte mechanical engineering department. In 2019, Bunte had experience of using a smaller drum cutter on one of its 25t excavators on the other weir section, and this proved to be a little too small and underpowered for the conditions. According to the site manager, the performance of the larger drum cutter was much better: "The drum cutter was perfect in terms of performance, precision and gentle cutting action. It ran smoothly from start to finish."

A total of 270m³ of concrete was removed from the two piers at an average rate of 10m³/h hour with all concrete and steel construction work being completed on time. "Pick consumption was within acceptable limits and the cutter met little resistance in the plain concrete. We only saw any significant wear in some lightly reinforced areas and on the granite pillar bases," added Christoph Karsch.



While working in unreinforced concrete, wear on the picks was minimal.



IMPROVE YOUR MACHINE **BE BETTER**

**FULLY AUTOMATIC QUICK COUPLER AND TILTROTATOR SYSTEMS
FOR MAXIMUM PERFORMANCE AND FLEXIBILITY!**

- Lightning fast change of hydraulic, electrical and mechanical attachments from inside the cab.
- Always the right attachment for the job.
- No staff around the machine during tool changes.
- Reduce the number of machines on the site.
- Meets and exceeds safety standards globally.
- Increased productivity.
- Increased profitability.
- Reduced transport costs.
- Eliminates oil spills.
- Protected hose run.
- Improved safety.
- Less dirt in the cab.



HYDRAULIC RECYCLING VACUUM BUCKET

POWERED BY HYDRAULICS

DYNASET HRVB HYDRAULIC RECYCLING VACUUM BUCKET

PRODUCES POWERFUL VACUUM AND AIR BLOW FOR CLEANING AND RECYCLING TASKS IN CONSTRUCTION AND DEMOLITION SITES AS WELL AS RAILROADS, FESTIVALS, COASTAL AREAS.

- Powerful air blow and vacuum with one unit
- Fast to use in cleaning tasks
- Efficient waste sorting
- Lower recycling fees
- Significant cost savings

VIDEO



HYDRAULIC EQUIPMENT FOR MOBILE MACHINERY

GENERATORS
VARIABLE GENERATORS
WELDING GENERATORS
MAGNET GENERATORS
MAGNETS
INSTALLATION VALVES

POWER WASHERS
STREET WASHING UNITS
PIPE CLEANING UNITS
DUST SUPPRESSION
DRILLING FLUID PUMPS
FIRE FIGHTING SYSTEM

AIR COMPRESSORS
BIN WASHING SYSTEM
POWER BOOSTERS
POWER TAKE-OFF
VIBRAS
ETC.



DYNASET.COM



BREAK(ER) TIME

It's been a tough year for everyone, particularly demolition equipment manufacturers who supply areas of the world severely hit by the coronavirus. Still, many companies have pushed forward with new and upgraded hydraulic breakers designed to help contractors continue their quest for jobsite efficiency, operational reliability and low ownership costs. Whether the job involves infrastructure, buildings, or other types of facilities, these breakers are ready to get to work.

Doosan's new HB-series hydraulic breakers

Doosan Infracore Europe has launched the new HB-series hydraulic breaker range for the European market. The new five model range offers high performance and a simplified design, specifically optimised and fully certified for excavators from 1.2t to 15t. As a result, Doosan HB breakers offer high levels of productivity, whether the operator is demolishing concrete or breaking rocks. The breakers' service life is extended through adoption of an advanced heat treatment process and quality proven materials for key components including the cylinder and piston. The energy of the piston stroke is accumulated by charged nitrogen gas and an inward valve system with a simple structure and fewer inner parts. A urethane damper prevents vibration that might damage the carrier and improves operator comfort. The front head supports the breaker and assemblies with bushing, which buffers the shock from the tool. The low noise housing is ideal for working in urban areas where noise levels must be controlled, or where local regulations may require silenced breakers. Ideally suited for demolition work, the new breakers are also intended for general construction, rental, quarrying and mining applications. Backed by a two year warranty, the breakers are available at cost effective prices, providing customer benefits in terms of total cost of ownership. The new breakers are also covered by the Doosan dealer service network and product specialists, providing fully comprehensive 'one-stop' service support.

Idromeccanica's big breakers for big jobs

In order to satisfy market demand for large breaker models, Idromeccanica now offers the improved IMI 170M, IMI 240M, and IMI 320T, which are now the

company's best-selling models. The IMI 170M features a 135mm tool and weighs 1,800kg fitting machines from 21t to 30t. The breaker releases 4,500J of energy, delivering 400-800blow/min. It fits the most common



Mantovanibenne's SH700R 'Eagle II' shear helps demolish German power plant

Fitted to a 300t excavator, a 230t shear has been used to help demolish parts of a German power plant that had become uneconomical to operate.

Lünen is the largest city in the Unna district of western Westphalia in Germany and is the location of the Hagedorn Group power plant. This was part of the Rhein-Ruhr municipal services consortium between 1938 and 1941 used for the supply of a nearby STEAG aluminium plant. In 1968, the power plant added a 250m tall chimney which was the tallest structure of its type in Europe at the time. In March 2019, the plant's increasingly difficult economic sustainability led STEAG to ask the Federal Network Agency permission to close the plant's units 6 and 7.

Kiesel GmbH, the company appointed to carry out this important demolition, began dismantling the facility in June 2020. The first phases were carried out using explosives, starting with the flue gas desulfurization system, followed during the first months of 2021 by the electrostatic precipitators, the combustion gas denitrification system, and the cooling tower and chimney. After the initial demolition with explosives, necessary to deconstruct the imposing protections of the plant, the project team proceeded with a more precise and silent controlled demolition.

For the building that housed the electrostatic precipitator, mainly made of iron, a Mantovanibenne SH700R Eagle II demolition shear was chosen to cut and demolish the internal iron and steel structure. Designed specifically to deal with iron structures and the demolition and future recycling of steel and derivatives, the SH700R was seen as ideal for tackling the imposing iron structure that covers the plant. The 230t shear was mounted on the largest demolition excavator in Germany, the 300t KMC1600S, which is the result of collaboration between Hagedorn and Kiesel that requires eight transport vehicles to move it. The SH700R itself is just one of the dozens of shear models in MBI's Eagle shears line dedicated to iron recycling and demolition.



excavator classes, and is suitable for any job. The IMI 240M is equipped with a 150mm tool bit matching machines from 26t to 35t, providing a power of 6,500J delivering 370-800blow/min. Last but not least, is the IMI 320T, featuring a heavy duty casing with a 155mm tool. The latter weighs 3,200kg and suits machines from 35t to 50t. All IMI breakers feature an attractive design, and are supplied with air and grease holes as standard, a feature that many other breakers offer only as options. The air hole allows the use of the breaker underwater, while the grease hole allows the automatic lubrication device to be simply bolted on making greasing easily accomplished. All Idromeccanica breakers are made entirely in Italy, with the company paying close attention to quality, performance and design. It continually monitors customer needs, making R&D the company's everyday goal, with bigger models set to join the IMI product range soon.

JCB's 'Contractor' range of hydraulic breakers

JCB's Contractor range of hydraulic breakers is designed to work with 0.5t to 60t excavators, backhoe loaders and compact machinery as well as breaker tool carriers etc. The range now includes 14 models, ranging from the compact HM012T that weighs in at 120kg to suit mini and micro excavators, to the 3.8t HM380T, which has been designed to work with excavators in the 40t to 60t category. HM033T and above have accumulators to protect the carrier machine from hydraulic pressure spikes, reducing possible wear and tear on the hydraulic system. HM080T and above are equipped with a refillable auto greasing system, and an auto stop feature that reduces blank firing, thereby protecting the breaker from unnecessary wear and damage. Internal control valves deliver higher efficiency and are said by the company to be less vulnerable than models that rely on external valves, while two speed control valves allow

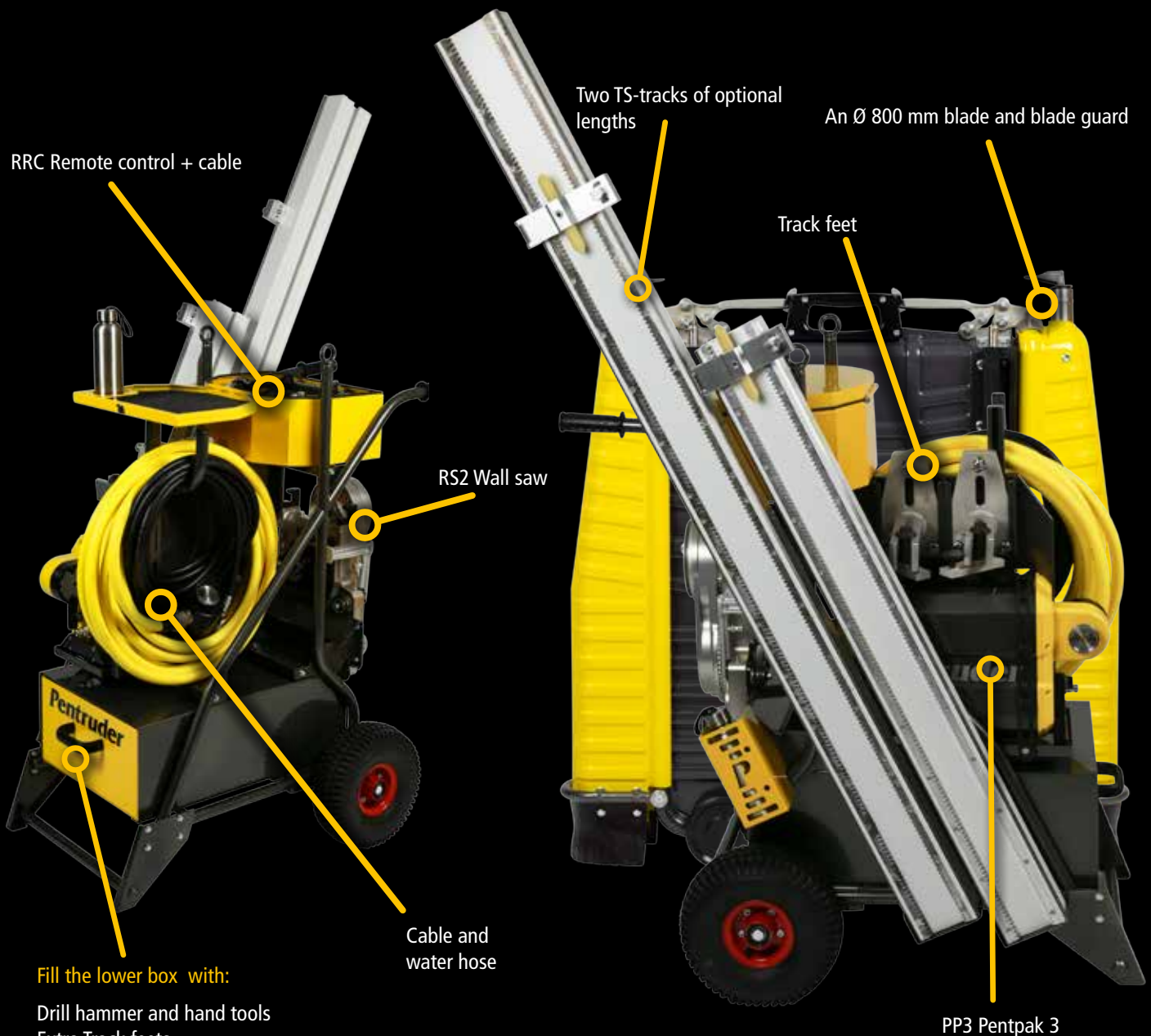
the operator to customise tool speed and stroke length, dependent on the material that is being broken. This increases productivity and reduces the risk of damage to the breaker and the carrier.

Hammers for use with equipment above an 8t operating weight come as standard with a refillable auto greasing system, ensuring the breaker always receives the correct amount of lubrication throughout the working day. This cuts downtime and boosts productivity, whilst twin oval tool retaining pins are included on heavier models, delivering double the life of a standard pin as they can be rotated to wear on both sides. Smaller breakers are equipped with a single tool retainer. Contractor breakers use a single scaled design with the same maintenance requirements for each model. This ensures that dealer and customer service staff, particularly in a rental operation, can easily work on all breakers in the range. All models undergo final assembly in the UK to the highest quality levels, and come backed by a three year manufacturer warranty.

Indeco latest innovations

The HP 100 FS, the smallest hammer in the Indeco range, made its US debut at Conexpo last year as the HP 150 FS in direct response to the need of the American market for mini excavators and other compact carriers from 0.7t upwards, which can operate in restricted working areas. Capable of working effectively even with reduced hydraulic flow and weighing under 60kg, the smallest member of the breaker range streamlines job times and ensures excellent productivity through an high impact energy per blow rate. Two other lightweights -HP 400 FS and HP 550 FS - offer improved performance with new powerful features, including increased energy class, blows per minute and tool diameter. A totally new product that extends the already broad range of large Indeco hammers is the HP 6000 FS, which takes up a

Pentruder® HFI TROLLEY



Fill the lower box with:

Drill hammer and hand tools
Extra Track feet
and more!

Cable and
water hose

Measurements:

Width:	67 cm
Depth:	98 cm
Height:	117 cm

Pentruder®
CONCRETE CUTTING SYSTEMS

Pentruder - designed and manufactured by:
Tractive AB | Gjutargatan 54 | 781 70 Borlänge | Sweden
www.pentruder.com | contact@pentruder.com



position midway between the HP 5000 and HP 7000. With this product Indeco aims to provide an answer to 30t carriers increasingly being replaced with slightly larger models weighing 35t to 36t. The new HP 6000 hammer is an ideal fit for excavators in the 35t to 45t range, with an excellent power to weight ratio. The new model has been designed to deliver productivity

and reliability, partly due to the Hardox inserts in the lower part of the casing, which enable it to withstand even the toughest jobs.

Finally, Indeco has introduced a new automatic greasing system developed by Bekalube's technical staff. A series of key systems are designed to keep hammers in perfect working order by using the right

amount of lubricant and cutting out the down times needed for manual greasing. The new kits are divided into two categories comprising of on board systems fitted directly onto the hammer, and units mounted onto the excavator. In both cases, these systems are connected to the hammer through a single greasing point.

janser

Professional Flooring Technology

German Quality



Floor Scrapers to suit any application!



Ride-on ADB HS
1180 kg

Ride-on ADB
950 kg

Ride-on Electro
656 kg



Power-Stripper
14 kg



COSMO IV
39 kg



MASTER MOBIL III
105 kg



STRATO MOBIL IV
190 kg



JUNIOR Ride-on
420 kg

Your projects - our equipment - your success!

Janser GmbH

Böblinger Straße 91
71139 Ehningen
GERMANY

Tel. +49(0)7034-1270
info@janser.com
www.janser.com

TRANSFORMING YOUR WASTE.



ALLU CRUSHER & ALLU TRANSFORMER FOR DEMOLITION WASTE .

Screen and separate fine materials from the demolition waste with ALLU Transformer screening bucket, and crush hard materials with ALLU Crusher.

Transform all your demolition waste; bricks, asphalt, wood etc. into recycable form. Less material to be transported to the landfill, more efficient utilization of waste materials!

ALLU TRANSFORMER – faster processes with ‘one step operation’ in screening, separating and loading.

ALLU CRUSHER – reliable crusher with no jamming, and quick adjustment to the required output specification.



BHS-Sonthofen 'Rotoshredder' chosen by waste management company

Choosing the right shredding solution is important when recycling aluminium and aluminium scrap. That's why a waste management company located in southern Germany opted for the proven Rotorshredder (RS) from BHS-Sonthofen.

Aluminium scrap accumulates in many different forms, with a major challenge for recycling plants being removing any contamination from other materials. For example, wood, plastic, and even other metals adhere to the aluminium, meaning that the materials need to be separated when processing. For this reason, a waste management company based in southern Germany turned to BHS-Sonthofen at the end of 2019 in search of a new recycling solution for the processing of 30,000t of non-ferrous metals that the company recycles annually.

The company had already had good experiences with equipment supplied by BHS-Sonthofen, and once again chose a solution from the company based on its proven longevity and suitability for recycling. Christian Kühn, sales director of Recycling & Environmental Technology at BHS-Sonthofen, explains: "The proven Rotorshredder of type RS 2018 was fitted with additional reinforcements for the processing of aluminium



in accordance with the special requirements." After receiving a hardened housing, a double walled base, and a new suspension system, it was commissioned in December 2019, with the waste management company being highly satisfied with the start-up phase as well as the first months of operation.

The recycling of raw materials plays an increasingly important role, when for example, a recycling plant's profitability hinges on high purity levels. BHS-Sonthofen considers each application individually and chooses a shredding solution appropriate to the situation. "Impurities are a major problem when it comes to aluminium scrap," explains Christian Kühn. "It's not just about shredding the feed material, but it's also

about breaking down the materials in particular." The Rotorshredder uses selective shredding to do this as aluminium is ductile, with impurities such as plastic being hard and brittle. Impact forces deform the aluminium, causing the impurities to break down. In the process, the composites are efficiently separated from the feed material. After classification takes place, the high purity aluminium is ready for resale.

"It is to our advantage to have our own test centre where we can carry out tests on the entire recycling process with the respective feed material, including the subsequent profitability calculation," explains Kühn. "We can provide the customer with the exact machine or plant that is suitable for their requirements."

Visit
www.pdworld.com
for more
news and information



Your Right Arm

Ramtec
ATTACHMENTS

We provide you a competitive advantage through a complete range of attachments for demolition, sorting and screening.

Ramtec Oy • Veivikatu 4, FI-15230 Lahti • +358 207 424 530
sales@ramtec.fi • www.ramtec.fi



BLASTRAC, THE EXPERTS IN SURFACE PREPARATION

NO MATTER WHAT KIND OF FLOOR FINISH YOU WANT TO ACHIEVE, WE HAVE THE SURFACE PREPARATION SOLUTION FOR YOU!



GRINDING

FOR GRINDING AND POLISHING OF CONCRETE AND OTHER SURFACES



SHOT BLASTING

TO PREPARE AND RETEXTURE CONCRETE



SCARIFIERS

TO LEVEL OR REMOVE THICK COATINGS

CONCRETE SURFACE PROFILES

PREPARATION METHOD	CSP-1	CSP-2	CSP-3	CSP-4	CSP-5	CSP-6	CSP-7	CSP-8	CSP-9	CSP-10
GRINDING										
SHOT BLASTING										
SCARIFYING										





Metso Outotec launches 'Nordtrack' mobile screen and crusher

Metso Outotec is adding two new products to its Nordtrack mobile crushing and screening range. The Nordtrack S2.5 mobile screen is a small, versatile scalping screen designed for compact job sites and a variety of applications. With a compact and light weight structure, a highly efficient two deck screen, and a wide selection of different screening media, it is designed to be the solution for construction contractors with frequent changes in site locations, or simply as a rental unit.

The second new addition is the Nordtrack 1908 mobile impact crusher. It is designed for smaller sized material reduction job sites, accepting different kinds of feed material including asphalt, concrete and rock. The same base model with an integrated screen on the chassis, the Nordtrack 1908S, was introduced earlier,

and it has been one of the best-selling Nordtrack units in Europe.

"I am very pleased to say that the Nordtrack range has been extremely well received by our customers," says Vesa Tuloisela, who heads the Nordtrack product offering at Metso Outotec. "It has proven to be a flexible solution meeting different requirements. Nordtrack sales have been developing very well despite the pandemic; in fact, we have exceeded sales targets in some areas. However, we are always listening carefully to customer feedback. These two new products represent a concrete outcome of those discussions." Vesa adds: "We want to grow our recycling customer base, offer attractive solutions for the rental business and for construction contractors globally."



Doosan aims for top spot with New 'DL-7' wheel loader range

Doosan Infracore Europe has launched the company's new 'DL-7' wheel loader range, introducing a complete line of next generation machines with an award winning design. The range is driven by powerful new Stage V compliant engines providing higher productivity, increased fuel efficiency and a low cost of ownership, coupled with an enhanced environment and experience for the operator. In this first phase of the DL-7 range introduction, seven new models are being launched: the DL280-7, DL320-7, DL380-7, DL420-7, DL480-7, DL550-7 and DL580-7, with four more models, DL200-7, DL220-7, DL250-7 and DL420CVT-7, being added in 2021. Charlie Park, CEO of Doosan Infracore Europe, said: "Doosan rolled out its first wheel loaders in 1989. Over the intervening 31 years, Doosan

has continuously invested to maintain our position as a leading global brand within the wheel loader industry. Over that time, Doosan engineers have never stopped innovating and developing our wheel loader range.

"Our new DL-7 models are the result of this endeavour and have been redesigned from the ground up. We listened closely to the needs of our European customers and revisited every single aspect of our existing wheel loader product design to provide the solutions they wanted. As a result, Doosan's new DL-7 wheel loaders will take customer satisfaction to the next level in the industry in terms of market-leading operator comfort, fuel economy, productivity and durability. The innovative technologies we have used in the DL-7 range also clearly differentiate our products from those of our competitors."



THE NEW 'R-SERIES'

Bobcat has launched the company's new R-Series Stage V compact loaders, representing the most significant redesign of Bobcat loaders in 60 years. The new R-Series models comprise of the S66 and S76 skid steer loaders and the T66 and T76 compact track loaders. John Chattaway, Loaders product manager at Bobcat, commented: "Utilising decades of experience, Bobcat has always made the toughest market leading loaders on the planet. This continues in the new R-Series loaders, which have been completely redesigned from the ground up with a focus on quality, reliability, durability and first class comfort. The new R-Series represents the next stage in the evolution of the compact equipment industry."



First Bobcat compact wheel loader leaves production line

With the first completed machine coming off the assembly line, Bobcat has announced that the company's first new compact wheel loader (CWL) - the L85 model - is now in full production at the Bobcat plant on the Dobris campus in the Czech Republic. Bobcat has also confirmed full details and features for the L85 CWL, which was part of the company's revolutionary 'Next is Now' launch event in October 2020. The first machine is heading to the Bobcat Institute on the campus, where it will be used to train Bobcat dealers and customers. By entering the wheel loader category, Bobcat now states that it has the largest loader portfolio and to meet demand, an additional fourth production line has been built at the company's plant in the Czech Republic. The capacity of the new production line is around 1,000 machines per year and will be operated by 15 workers per shift.

Jiri Karmazin, Loaders product manager at Bobcat, said: "A product of the Bobcat Innovation Center on our Dobris campus, the L85 has been designed to set a new market-leading performance benchmark in this segment of the market. The L85 is built with proven components including the engine, structures, axles, electronics and hydraulics sourced either from Bobcat or our prestigious Tier 1 suppliers. Many components are already widely used in our market leading compact loaders, mini excavators and telehandlers, and the L85 undergoes the same final assembly and test procedures as these products."

COMMITTED TO FLOOR GRINDING AND POLISHING TECHNOLOGY

www.ashinediamondtools.com



With a strong R&D team, consistent quality,
and professional customer support,
Ashine enhances customer advantages in market
competition to strengthen long-term collaborative partnership.

ASHINE
Grinding & Polishing Expert

SONMAK

Diamond Tools



ASO 1. Organize Sanayi Bolgesi Gokturk
Caddesi No: 4 P.O Box : 06935
Sincan / ANKARA / TURKEY
sonmak@sonmak.com
www.sonmak.com
made in Turkey



A TOOL TO DRUM UP YOUR BUSINESS WITH

Compact and powerful all-rounders, rotary drum cutters keep winning the hearts and minds of demolition industry players. According to excavator attachment manufacturers, demand for drum cutters has been on the rise for the past few years, current restrictions and challenges notwithstanding. And, as will be evident from this feature, their range of applications is constantly expanding. Andrei Bushmarin reports.

Antraquip cutters speed up lock expansion project in Northeastern USA

US based attachment specialist Antraquip has recently supplied three of its powerful AQ-5 drum cutters to one of the company's most longstanding customers in the state of New York. Over the years, the contractor has performed many demolition jobs using Antraquip cutters, but this particular project was a unique challenge. The task at hand involved controlled demolition of a concrete wall within a lock to an extremely tight deadline. The lock needed to reopen by spring to allow large vessels to pass through this vital waterway that provides access to all major cities in the north eastern part of the US and Canada. Mounted on three Cat 349 excavators, which were positioned on barges, the AQ-5's would grind the concrete to a depth of up to 1m. The concrete was not a weathered type commonly seen on lock and dam rehabilitation jobs, but instead had a hardness of 55MPa with steel reinforcement inside. As the machines worked their way down, the water level was dropped in order to access the deeper areas of the lock. The project required operation of the three machines around the clock despite brutal weather conditions with temperatures dropping to as low as -34C. Despite all these challenges, the entire job was completed well ahead of schedule in less than one month. The use of Antraquip drum cutters proved the ideal option for a project like this as the machines provided the combination of high productivity and precision while eliminating the possibility of over breaking or micro fracturing that could damage the integrity of the lock walls. Designed to withstand extreme rock conditions and maximise production output, Antraquip drum cutters are manufactured at the company's newly expanded factory in Hagerstown, Maryland. Key features include mechanical

rotation (standard) or hydraulic rotation (optional), adjustable hydraulic motor displacements, a dust suppression system and customisable drum options for various applications. Antraquip drum cutters fit carriers ranging in operating weight from 1t up to over 100t.

www.antraquip.net

Welcome to the 'Rockzone'!

Just outside the German city of Dortmund, Mühlheim based excavation firm Graf Rohrleitungs-und Tiefbau GmbH, led by supervisor Frank Schöne, used a Rockwheel 'G5 Twin' unit to cut through 6m of soil and 7m of hard rock with the purpose of relocating an 110kV cable. The original plan involved breaking up the hard rock in the trench using a hydraulic breaker. To make the trench, Frank Schöne attached the Rockwheel G5 Twin to a 5t Kubota base machine. However, when the team got started, they realised that the Rockwheel was capable of cutting through the 80MPa rock, thus eliminating any



need for the breaker. And that was not the only benefit: the removed material made perfect refill gravel once the work had been complete. The contractor started out by digging an 11m by 7m pit, shored with soldier pile walls to prevent soil collapses and landslides. The pit needed to be 13m deep to accommodate a micro tunnel boring machine which would make its way below the B54 federal highway. Excavation work proceeded smoothly until the team hit the hard rock, but fortunately the Rockwheel G5 Twin cutter took this in its stride.

"Incredible what this little machine can do," remarked Frank Schöne, who has a lot of experience with hydraulic cutting units. "The Rockwheel wasn't just useful for the earthworks. I was able to put it straight back to work in four other projects!" Those included asphalt cutting, wall demolition, cutting of blast furnace slag to reuse it as a road filling material, and crushing of reinforced concrete. Frank Schöne was particularly impressed by the level of service provided by machinery supplier Hopf GmbH and the drum cutter specialist Rokla GmbH. "Marcel Scholz of Hopf got totally involved in our planning," explains Schöne. "He came up with the right cutting units at the right time. And Robert Piasiecki, Rokla's general manager, brought them over personally the next day. Now that's what I call service!" Having been operating on the global market since 2013, Rokla today offers a range of drum cutters under the brand name 'Rockwheel', which includes 24 models fitting 1t to 125t excavators. In 2019, Rokla took over the crusher and screening bucket specialist Hartl to further expand its product offering. Following the acquisition, Rokla has created an umbrella brand with all product groups - Rockwheel, Rockcrusher and Rock-screener - now united under the single Rockzone brand.

www.rock.zone



MB-R500 safeguards holidayers' peace of mind in Croatia

Brodarica is a small cosy village on the Adriatic Sea coast in Croatia. A perfect getaway destination, it is all about tranquillity and relaxation. So when a need arose to replace the village's water mains, said tranquillity came into serious jeopardy. To complicate matters further, the villas and private houses were separated by paths which were just 2m wide, with barely any room for machinery to manoeuvre. Hammering the road surface with a hydraulic breaker proved unfeasible due to the vibrations that it caused and the presence of other pipes. To save the day, a MB-R500 drum cutter from Italy based attachment specialist MB Crusher was called in. Mounted on a 9t Takeuchi TB-290-2 excavator, the drum cutter easily ground through the hard limestone typical of the Dalmatian region. The MB-R500 is the smallest model in the manufacturer's line up, having an operating weight of only 300kg and a drum diameter of 500mm. Like other models in the range, it can be supplied with various accessories. For jobs in enclosed spaces and busy motorways, the use of a drum cover kit is recommended to reduce dust emission and to contain flying debris. If milling to a certain depth is specified, then the cutting depth adjustment kit is the recommended accessory to use.

www.mbcrusher.com

Kemroc's gentle touch helps renovate 1920s structure

Built back in 1925, the flow control barrage at the village of Viereth am Main in Germany became due for renovation in the mid 2010s. The river barrage (aka 'lock' in layman's terms) consists of three main components: a lock for vessels to pass through, a hydropower station and gated weirs. Its main purpose is to control the river flow and to maintain a constant water level. When breakdowns at the Viereth barrage became more frequent due to corrosion and general wear over the years of such parts as toothed racks, rims and wheels, a major modernisation project was launched in 2014. To minimise disruption to water transportation and to maintain a degree of control over the river flow, it was decided to renovate the two weir sections one by one. The gated weir's construction featured three 17m high pillars, between which there were the weir gates with the lifting mechanisms attached to the pillars' sides. The gates and the mechanisms needed to be replaced. Due to the design of the new lifting mechanisms, the concrete pillars had to be modified before they could be put in place. The pillars were built in the 1920s from a rela-



tively fragile, mostly non reinforced concrete. In 1994, a surface layer was removed and replaced with a mixture of sprayed concrete and mortar. The renovation contract specified that the removal of this outer layer be carried out as carefully as possible to avoid any damage to the existing concrete structure. Given this, the only viable options were grinding or using high-pressure water jets.

The contractor Johann Bunte Bauunternehmung GmbH & Co. KG decided that a Kemroc KR 120 rotary drum cutter mounted on a 35t excavator would be a perfect tool for the job. "We decided to go with the drum cutter and excavator option," explained Christoph Karsch, Bunte's site manager. "The use of high pressure water jets would have been considerably more expensive and would have required extensive protection from flying material. In addition, we were able to carry out more work further down at the base of the pier with the drum cutter and progress promised to be quicker." It took the German contractor 24 days in April 2020 to complete the job. "The drum cutter was perfect in terms of performance, precision and smooth cutting action. A total of 270m³ of concrete was removed from the two weirs at an average rate of 10m³/h, with pick consumption being within acceptable limits," said Christoph Karsch. "The cutter met little resistance in the plain concrete. We only saw any significant wear in some lightly reinforced areas and on the granite pillar bases."

www.kemroc.de

Simex goes for direct drive to ensure high torque and performance

The TF double drum cutters from Italy based trendsetter Simex features direct drive technology that ensures high torque and high performance of the attachments. Hydraulic power is transmitted directly to the drums while the shaft is free from load thanks to the double support bearings for each drum. The direct drive piston motor has no lubrication points and needs no regular maintenance. Hydraulic lines are equipped with a double security filter system, which preserves the excavator and the attachment from contamination, while the mechanical seals on drums protect from external agents, even when the attachment is submerged in water or muddy ground. A reduced distance between the drums enhances the total working width. The two sides of the frame have a symmetrical shape to prevent rocks and



stones from getting stuck between the drums and the frame. Simex TF cutters are suitable for a wide range of applications including profiling of rock and concrete walls, tunnelling, quarrying, demolition, trenching and finishing jobs. Low noise and vibration levels allow for operation in sensitive areas such as urban centres, bridges or tunnels. The drum cutters are particularly useful in quarrying as on the one hand, they perform selective breaking of rock mass while ensuring the stability of the pit walls; on the other hand, they increase profitability by producing crushed material that often does not require any further volumetric reduction.

www.simex.it

Nine model KDC series from Demarec

Netherlands based attachment specialist Demarec KDC series of drum cutters consists of nine models fitting 2t to 60t carriers. Driven by high torque motors, the KDC cutters come equipped with robust spur gearing and gear reduction capability to increase the cutting force. The availability of various drum and pick choices ensures high performances in the harshest environments. A heavy duty sealing system makes it possible to use the attachments underwater at a depth of up to 25m. The KDC series is available as standard with three drum and four pick options.

www.demarec.com





ACR™ – AUTOMATED CONCRETE REMOVAL

At Conjet, it is our mission to provide a safe, sustainable solution that removes concrete for the restoration of bridges, dams, tunnels, parking decks and other structures. The end result must be a high quality bonding surface, free of micro-cracks so that the new concrete overlay will achieve maximum strength to lengthen the useful life of the structure.

To meet all of these requirements, we developed the hydrodemolition technology which has been built into our robots. The results are in and the advantages of hydrodemolition are clear:

25 x FASTER
THAN JACKHAMMERS

2 x STRONGER STRUCTURE

Using a solution that automates the hydrodemolition process allows you to focus on the best possible results while at the same time securing a safe working environment for the operator.

The solution is here, we call it ACR™ – Automated Concrete Removal.



Let the robot do the hard work

www.conjet.com

COME MEET US AT WORLD OF CONCRETE.
YOU FIND US IN BOOTH W641



BEILITE

Chinese hammers for Europe

In 1994, Karel L Glaaser founded ACDE Europe, which after many years of operation as a marketing and sales company, has now announced the introduction of the Beilite Europe brand of Chinese hammers.

Glaaser was motivated to make this move due to discontent. "I've seen too many changes of management, and the changing qualities of my suppliers' products too often frustrated me. It was time to do better under my own brand name." Glaaser's move is in conjunction with other activities, forming three pillars of his operation. The ACDE Europe grapple series has an extensive selection of sorting grabs, multi grapples, log grapples, stone grapples up to 13t, and is established throughout Europe. Glaaser also markets a variety of shears for demolition and recycling. They are supplemented by magnets, compactors and screening buckets. The third main pillar is now the Beilite hammer series. "Beilite is a top brand in China, so why not here? For one year we've been testing the hammers under our brand name ACDE Europe in rental fleets. The customers were enthused by

their power and reliability. Convinced by the quality, we decided to be the first one to introduce a Chinese

product in Europe under its own brand name and not under an OEM name."



Leading range in China

Since 2003, Taizhou Beilite Machinery Ltd. in Wenling has built hydraulic hammers. This company has 370 employees and is one of the two largest hydraulic hammer manufacturers in China and the only one which only builds these machines. Beilite operates three plants, one of which was built only recently and is equipped with the latest production engineering technology. "The quality of a hydraulic hammer is substantially determined by the quality of the steel, by the hardening method and by the precision of the manufacturing. The Beilite plant is equipped with fully automatic hardening furnaces made in Germany and works with the old Krupps best practice hardening

system. The computer controlled machine tools ensure highest manufacturing precision, which improves the hammer life span," says Glaaser.

Upgraded for Europe

Beilite works with a network of specialist dealers in 60 locations in China and 21 partners abroad. The manufacturer is specialised in the production of large hammers over 5t in working weight. "Alone for the Chinese market, 15 of these giants are produced every day," says Glaaser. For the European market, he has adapted the hammers to customers' requirements: "A

sound suppressed housing based on the Henze system, automatic lubrication and the European hole pattern for the adaptor plates distinguish our Beilite Europe hammers from those for the Chinese market."

The European hydraulic hammers are supported by ACDE Europe's first class service and decades of professional know how. "Our step was courageous, but perfectly right. ACDE Europe has been enhanced from a distributing organisation for external brands to an innovative manufacturer. With more than 30 years of experience with attachments we can serve customer's requests very precisely," says Glaaser. "In the Netherlands, we operate a



logistics centre which distributes our hammers and spare parts in Europe. In addition to our concentration on Benelux, Germany, Austria and Switzerland, we supply customers in all other European countries."

Qualität und Leistung,
die sich rechnen lassen.®

Quality and Performance,
that makes sense to invest.®

Greifer/Grapple
75 - 8000kg

Hydrauliek Hammer
70 - 8000kg





TR40
Ring Saw

FU15D

The new FU15D:
powerful, universal drive
unit for your tools





HD16 / HD18
Diamond Core Drill



TK40
Chain Saw



TS40
Disc Saw



WS75HF
Rotation Arm Wall Saw



HS40 / HS50
Hand Saw



www.weka-elektrowerkzeuge.de

Find more product information and contact details of WEKA distribution partners on our website.

GROOVER & GRINDER

Ideal for the surface treatment of roads
and airport runways

- + 426 kW / 575 PS + CE certified
- + Grinding shaft speed: 1.315 RPM - 1.900 RPM
- + Grinding width: 127 cm

A cooperation of Diamond Products,
TYROLIT and LISSMAC.



CONSTRUCTION TECHNOLOGY



Now available in Europe!

LISSMAC Maschinenbau GmbH
www.lissmac.com







Dismantling on the former RWE site is DGNB certified

The demolition of the former RWE high rise building poses major challenges for BST Becker Sanierungstechnik GmbH from Oberhausen, Germany. Together with the client – Kölbl Kruse GmbH from Essen – the DA member company also wants to set high standards in terms of sustainability and recycling management. In a pilot project, the works were certified by the German Sustainable Building Council (DGNB), with the aim being to achieve 'platinum status'.

The former RWE building in Huyssenallee, referred to as the 'Y-Building', has shaped Essen's skyline for four decades. It is now being demolished by BST Becker Sanierungstechnik GmbH with the building materials being recovered, not least due to the DGNB certification, set to be used again in new applications. The demolition of the 18 storey, 86m high building and neighbouring buildings, comprises of an area of over 320,000 m³ of enclosed space, presenting challenges, even without recycling. The surrounding area is not only densely populated, but the construction site is also located in direct proximity to a tunnel of the Ruhr expressway A40, whilst the underground car park is adjacent to a subway station, with Essen's main railway station also located nearby. For the dismantling of the Y-building, a 100m tower crane was erected to transport the dismantled concrete to the ground. The top floors are currently being dismantled using demolition robots and concrete saws whilst parallel to this, the first demolition work on the buildings in the backyard using long front excavators is set to start at the beginning of April.

The demolition of a small block of houses along Dreilindenstrasse is already in progress. The A40 slip road will be temporarily protected by a supporting structure during the demolition phase, but in some cases it must also be completely blocked. To dismantle the pollutant containing facade panels, the building was equipped with around 22,000 m² of scaffolding and provided with tear resistant foils to prevent building materials from falling off and to protect the environment from dust emissions. Dismantled successively as the building is demolished, the scaffolding also serves as fall protection for the employees. In order to protect against noise, dust and vibrations, a detailed emission control concept has been developed, which includes the use of low noise machines and adequate irrigation.

The entire project is expected to be completed by early 2022, with an average of around 60 employees working on site by then. "In order to be able to carry out the dismantling work professionally within this tight schedule, we rely on the know-how of our employees and our state of the art equipment. In order to be able to guarantee the high quality standards, two foremen

are always on duty on the construction site in addition to the project management and the construction management," explain the two BST managing directors Christian Becker and Michael Pfeiffer.

High requirements set by DGNB

The requirements of the DGNB certificate, 'Building Dismantling', BST Becker Sanierungstechnik GmbH wishes to achieve, also cover such aspects as the remediation of hazardous substances, safety on the construction site or methods for reducing noise or dust emissions. However, according to construction manager Sarah Sinnwell, the focus is on the circular economy: "The focus is on the recycling of raw materials into the building cycle and supporting the recycling process in order to reduce the quantities to be disposed of as much as possible." The reuse of old components or furnishings also plays a role here resulting in a search for suitable customers. This saw a kitchen being donated to Moldova, whilst the former canteen and other kitchens, washing machines, heavy duty shelves, doors and staircase railings necessitated in other recipients being found.

70,000t of concrete extracted

Even more impressive, according to the company, will be the percentage of concrete produced by demolition from the solid walls of the buildings. Since the beginning of March, an impressive 70,000t have been crushed directly on site to a grain size of between 45mm and 65mm and 100% recycled, in some cases even directly again on site when creating a new embankment. The company's other tasks for obtaining the certification include disposal as close as possible to the site, as well as separating the building materials by type on site and documenting this separate collection. This high expenditure, is however worthwhile according to managing director Michael Pfeiffer: "We are very proud to be able to participate in one of the first five building sites certified in such a way, therefore we do not shy away from the expenditure and all together we are also quite ambitious and would like to fulfil at least 80% of the DGNB requirement, which would then be platinum status."

www.bst-ob.de

Wachtberg Kompost relies on the 355 E telehandler from Sennebogen

At the Wachtberg composting plant there are many different tasks to be done. For this you need a true all round machine, which has been supplied by Sennebogen.

Since 1993, Wachtberg Kompost has been processing organic material into high quality compost, soil and bark mulch. To ensure that the sorting and loading of the material, the decision was made to acquire a Sennebogen 355 E telehandler, supplied by Jungbluth Baumaschinen GmbH. This is used to deal with materials received by the company, sorting large amounts of green waste, root woods and other untreated garden waste. These do however hinder manoeuvrability, but the steering system of the telehandler reduces the turning radius of the machine to less than 4m.

Everything in view

A shredder is used to chop bark into bark mulch, with loading efficiency improved due to the 4.25m elevating cab of telehandler which provides views into the shredder's loading opening for precise loading and to prevent possible blockages. Mr. Riebau, owner of Wachtberg Kompost, says, "For us, the 355 E is a multi-talent, which simplifies the processing of green residues as well as material handling and loading considerably. Above all, the elevating cab gives us a constant overview of the site and also of the trucks. Thus the 355 E has become indispensable for us."

Once shredded, the bark mulch is stacked very high. This is easy with the 355 E, with the combination of telescopic handler and wheel loader making it ideally equipped. The robust steel construction of the telescopic boom has a stacking height of 8.5m, power transmission into the bucket uses 'Z-kinematics' and the variable travel drive provide the driver with the perfect working conditions. This enables even heavily compacted and heavy compost to be extracted, with the innovative control of the drive unit automatically providing the driver with the optimum mix of pull-thrust force and travel speed. The 355 E can be equipped with the Volvo quick change system on request, an additional hydraulic circuit on the boom head and a permanent function for the standard auxiliary hydraulics.





INNOVATIVE ROBOTIC SOLUTION

provides productivity

Construction is currently underway in the Philippines on a massive bridge system connecting Cebu City with Cordova on the southern end of Mactan Island. The 8.5km Cebu-Cordova Link Expressway, slated for completion in 2021, will span the Mactan Channel with a 51m navigational clearance for shipping vessels. It promises to ease congestion between Cebu and Mactan and boost economic activities throughout the region by providing additional access to the island and the Mactan-Cebu International Airport for an estimated 50,000 vehicles a day.

The project relies on a carefully choreographed plan of simultaneous operations to meet strict deadlines. Expert logistics allow crews to avoid many hurdles; however, unforeseen challenges can still arise. When a bad batch of concrete threatened to derail progress on one of the bridge's first pylons, project managers needed a creative solution that could quickly remove the poor quality concrete without damaging the rebar or putting the project behind schedule. Hydrodemolition was the only process with the precision and productivity to keep the project on track.

Cebu Link Joint Venture (CLJV) contacted Singapore based Asia Waterjet Equipment, the region's premier hydrodemolition experts. Access and site conditions presented quite a challenge, but with decades of experience in some of the most hazardous applications, Asia Waterjet Equipment was more than up to the task. With the clock ticking and monsoon season in full swing, the team arrived onsite with an Aquajet 'Aqua Cutter' 710V hydrodemolition robot and Jetstream HP water jetting pump.

Passion for problem solving

"Our focus has always been providing the cutting edge tools to make challenging applications safer and more efficient," said Chris Parkhill, Asia Waterjet Equipment sales director for Southeast Asia. "From the very begin-

ning, we've been involved in some of the most hazardous operations out there. We understand the demands and dangers, which is why we partner with industry leading equipment manufacturers for robust solutions that maximise safety and productivity." Pairing the right tools with experienced team members has earned Asia Waterjet Equipment a reputation for high quality results. In emerging markets, such as the Philippines, this expertise puts the company at the forefront. "From North Africa to South East Asia, we cover a lot of ground but being able to meet the contractor where they are is key to a successful solution," added Parkhill.

Troubled water

CLJV was conducting construction on several bridge pylons simultaneously. To minimise disruptions to the local community, the project's primary staging area, as well as the initial pylon, were only accessible from the coast. This meant the concrete had to be mixed 2.5km down the coast then transported by barge to the jobsite. From there, the barge was grounded, and the trucks disembarked directly onto the beach, with the pylon being 30m inland. Overall, the transportation delay had no negative impact on the concrete, although a complication with a single delivery threatened to throw the entire project behind schedule and over budget. Parkhill explains: "When you are working with con-

crete, sometimes things don't go to plan. It's a delicate equation, after all, and even a slight miscalculation can ruin the mixture. Unfortunately, when that happens, there isn't an easy fix."

Crews knew there was a problem immediately. The concrete was already setting as they pumped. Vibrating and other correctional methods failed, and the pour was ultimately unsuccessful. Even worse, the concrete fell 350mm short, leaving a mesh of exposed rebar. For CLJV and Asia Waterjet Equipment, the challenges were adding up, making for a very difficult repair. While CLJV had budgeted time and money for small complications, it could not afford to demolish the whole nearly complete pylon and start again.

Crews with handheld breakers or excavators could remove the poor quality concrete, but only by destroying the rebar. "There was no option; the rebar and existing good concrete had to be protected," Parkhill said. "If CLJV went with traditional demolition methods, they'd have to open, pry apart where possible or cut the rebar and manually jack hammer out the bad concrete. There's no guarantee a man using a jack hammer could gauge what's good and what's bad, so they'd end up removing extra. Then they'd have to bend the rebar back into place without breaking it, or weld or cut new threads and join with it threaded couplers. It would add weeks to the project and a significant cost to the budget. They simply couldn't afford it." Hydrodemolition proved the ideal solution using high pressure water jets manipulated by an automated robot to remove layers of deteriorated and damaged concrete as well as cleaning and descaling the exposed rebar, and removing non visible contaminants such as dirt and mud.

Building and crossing bridges

Productivity was also a concern. With simultaneous construction continuing on several other pylons in the area, crews needed to remove the poor quality concrete and complete repairs. With the ability to complete concrete removal tasks up to 25 times faster than a hand lance, the Aqua Cutter provided the necessary solution to keep the project on schedule. To assist, Asia Waterjet Equipment brought in Aquajet special application manager Kjell Isaksson to support the operation. "There were a lot of variables and no room for error," Parkhill said. "To minimise the risk of delays, we decided it would be best to have an Aquajet specialist on site."

Like the cement trucks, the Aqua Cutter and all support equipment, had to access the site from the Mactan Channel. Proximity to the water and the frequent heavy rains of the monsoon season made ground conditions difficult. However, since the Aqua Cutter is tracked and self-propelled, the uneven, muddy terrain presented no problems. This mobility was also necessary for tackling the demolition itself. Once lifted the 4m onto the pile cap by a crane, the robot was able to easily manoeuvre over the rebar.

To help reduce cost and increase production, Asia Waterjet Equipment opted to use seawater for the majority of the demolition rather than bring in fresh water. The company continually filled two 20m³ tanks directly from the Mactan Channel. The hydrodemolition robot operated at 1,000bar removing 10m³ of poor quality concrete at a depth of 150mm-250mm in days. "With the Aquajet Aqua Cutter, we increased productivity to a point where construction was back on schedule," Parkhill said. "Without hydrodemolition, there's no way CLJV would have been able to do that."

Solid body. Solid power.



United. Inspired.

A solid investment.

Our Small Breakers are truly versatile. The slim and compact design makes them easy to handle and enables quick positioning. The range is perfect for working in confined spaces such as inside buildings, up along walls or in narrow trenches.

epiroc.com





Wacker Neuson Group receives TÜV Austria seal

Since 2015, the Wacker Neuson Group has continually expanded its range of electric-powered construction machines and equipment in the zero emission range, the use of which are said to save up to 93% percent of CO2 emissions compared to conventionally powered models. The specified reduction in CO2 has now been certified by TÜV Austria. "Our electric machine line is called 'zero emission' because, when in use on the construction site or on farms, the machines and equipment are free of exhaust emissions," explains Alexander Greschner, sales director of the Wacker Neuson Group. "At the same time, we want to become more transparent and support our customers in evaluating their carbon footprint. We looked at CO2 emissions over the entire product lifetime, and TÜV Austria has now certified the values we determined and confirmed them with a seal."

The new 'R2-Series'

Bobcat has launched the company's new R2-Series generation of 5t-6t Stage V compliant mini excavators – the new E50z, E55z and E60 models. The R2-Series machines offer many new state of the art features and options such as Bobcat's award-winning 'Advanced Selectable Auxiliary Control' (A-SAC) system and the innovative 'Automatic Track Tensioning System' (ATTS) technology. Robert Husar, product line director for Bobcat mini excavators in EMEA, said: "We are delighted to announce the new Bobcat R2-Series 5-6t mini excavators, the design of which has benefitted from the close involvement of our customers at every stage of the process. The truly striking styling of these new machines is indicative of their robust and dynamic design and excellent machine fit and finish. All these models offer a best in class mix of high performance, superb stability and smooth controllability of the working functions."



Brokk introduces the world's 'most powerful demolition robot'

Brokk has introduced the new Brokk 900, which it says is the world's largest and most powerful demolition robot. It builds upon and improves on the success of its predecessor, taking a big step up in power and performance. It comes in two models, the standard Brokk 900 and Brokk 900 'Rotoboom' with a high precision rotating boom system.

Brokk has introduced its next generation with the all new Brokk 900. Leveraging the success and experiences of its predecessor, Brokk has developed the new robot to meet the extreme requirements of the toughest hard rock underground work. The Brokk 900 is a big step up on the Brokk 800 (which it succeeds) in many ways. The design and engineering of the machine is reinforced, power is increased, operation even more precise, and the new breaker is more powerful, all with almost no increase in size and weight.

Using Brokk 'SmartPower' technology to improve the powertrain, the Brokk 900 delivers a 25% increase in output power. At the same time, reliability and machine uptime are improved. The two different models comprise of the standard Brokk 900 for using a powerful breaker, and the Brokk 900 Rotoboom with a high precision rotating boom system. The standard Brokk 900 comes with the option of two different hydraulic breakers, both of which are more powerful than the breaker on the Brokk 800. These consist of the BHB 1500, which is a 1,500kg breaker for the hardest materials. Paired with the hydraulic power of the Brokk 900, this delivers a hard punch in each blow. The BHB 1300 is a slightly lighter breaker for maximising productivity in heavy concrete demolition. As with all Brokk robots, it

is easy to change between the breakers to ensure that the optimal attachment for the job is used.

The Brokk 900 Rotoboom is designed for flexibility in applications where access and precision are more important than power. It has 360° degree continuous boom rotation with smooth movements for high levels of precision, it is heat protected for hot refractory work in metal plants, and it comes with Brokk's patented heat shielded hydraulic breaker.

Both Brokk 900 models come with the option of electric or diesel powertrain, with the electric motor being the obvious choice for the lowest cost of operation and the most environmentally friendly usage. However, the new diesel engine is not far behind, meeting the toughest emissions standards that exist today. It is compliant with both the USA standard EPA Tier 4 Final and the EU Stage V standard.

Serviceability has also stepped up, and even though the machine is big, weighing in over 11t, it is designed to be serviced by one person, with no heavy lifting needed. "All in all, the new Brokk 900 represents what we are known for. More power in a compact and smart package. And that stays true even for our biggest demolition robot," says Martin Krupicka, CEO of Brokk. Delivery of the new Brokk 900 will start at the end of the second quarter of 2021.

Concrete Show South East Asia 2021

The 8th edition of Concrete Show South East Asia will take place from 17-20 November, 2021 in Jakarta. The Organizer is PT. Pamerindo Indonesia. MEREBO Messe International based in Hamburg/Germany is in charge of the "Europe, America & Australia/NZ Pavilion" dedicated to companies, associations, chambers and trade press of these regions.

Concrete Show South East Asia 2021 features a wide range of products and technology, covering raw materials, ingredients, reinforcement technology, pre-fab techniques and construction related services. The last event in 2019 attracted 12,811 attendees and 366 exhibitors from 22 countries.

www.concreteshowseasia.com

TopTEC

SPEZIALMASCHINEN GMBH

TopTEC Spezialmaschinen GmbH
REMOTE CONTROLLED DEMOLITION ROBOTS
Breithornstraße 10 · D-81825 München
E-mail: info@toptec-germany.de
Tel.: +49 (0) 89 - 42720550



www.toptec-germany.de



ROCK.ZONE

**ATTACHMENTS
THAT INSPIRE!**

- 🔧 MOST POWERFUL
- 🔧 MOST EXPERIENCED
- 🔧 MOST ROBUST
- 🔧 MOST KINDEST

ROCKCRUSHER | ROCKWHEEL | ROCKSCREENER



WWW.ROCK.ZONE

ROKLA GMBH | 74595 Langenburg | info@rock.zone | +49 7905 666





Himoina generators for stationary applications now available with emission compliant engines

The new 'HS Stationary Range' launched recently now incorporates new models of generator sets with emission compliant engines. Yanmar owned Himoina is committed to developing environmentally sustainable equipment, and has incorporated into its generator sets emission compliant engines, exceeding the requirements set by the current 97/68/EC regulations on emissions. In this way, the range offers a variety of models from 10Kva to 50Kva with both emission and non-emission engines so the user can select the option that best suits. All this is set in a context in which the awareness of environmental care leads to the development of sustainable equipment even when the regulations do not require it, as in the case of fixed or stationary applications. The new 50Hz and 60Hz models incorporate Yanmar Stage 3A and Tier IV engines.



DOOSAN 'XITECLOUD' PRESENTED AT HILLHEAD DIGITAL

The Doosan Infracore Europe presence at the Hillhead Digital event from 30-31 March 2021, included the first presentation in the UK of the company's XiteCloud quarrying, mining and construction solution. XiteCloud is the first step towards the commercialisation of 'Concept-X', the company's integrated unmanned and automated control solution, first demonstrated in 2019. XiteCloud maximises productivity by incorporating complex 3D drone construction surveys and earthwork calculations into a cloud platform, allowing them to be completed in just one to two days. Following the successful introduction in South Korea, Doosan Infracore is intending to launch XiteCloud in international markets, including Europe in the near future. Doosan Infracore plans to expand XiteCloud's applicability to large scale construction equipment by exploiting 5G mobile technology and telematics, allowing the customer to manage all of their machine fleet on this platform. In addition, XiteCloud can add in information from optimal planning algorithms and fleet plans to complement the personal experience.



**THE SMART TECHNOLOGY
FOR SURFACE PREPARATION**

GRINDING AND POLISHING MACHINES




RENOVATION TOOLS




SCARIFIERS / MILLING MACHINES






Industriestrasse 40
CH-4455 Zunzgen/Switzerland
www.airtec.ch - info@airtec.ch



LOADS OF NEW CRUSHERS, SCREENERS AND SHREDDERS

In the prolific world of mobile shredding, crushing and screening, many new machines are being rolled out to the market and being put to work in exciting projects all around the globe, from Germany and Cyprus, all the way to Burkina Faso.

Waste management company uses Rotorshredder from BHS-Sonthofen

A challenge for aluminium recycling plants is contamination from other materials such as wood, plastic and other metals which stick to aluminium, thus requiring separating. A German waste management company turned to BHS-Sonthofen for a new recycling solution for the 30,000t of non-ferrous metals that they recycle annually. The company opted for the Rotorshredder, which shreds the feed material and breaks up composites. The Rotorshredder RS 2018 was fitted with reinforcements for aluminium processing in accordance with the customer's requirements. After receiving a hardened housing, double walled base and new suspension system it was commissioned in December 2019. The recycling of raw materials contributes to a recycling plant's profitability which often hinges on high purity levels. BHS-Sonthofen therefore considers each application individually and chooses a shredding solution appropriate to the situation. The Rotorshredder itself uses selective shredding, with the impact forces 'deforming' the aluminium, causing impurities to break down. Composites are then separated from the feed material and following classification, the high purity aluminium is ready for sale.

www.bhs-sonthofen.com



Arjes shredders in use in Israel

Arjes shredders are now in use in Israel by such company's as Gal Michsur, which uses the 'Impaktor 250 Evo' to process materials including shredded waste wood, which is mainly used as a substitute fuel in incineration plants. Prepared green waste is also used for processing in composting plants, with all metal contaminants removed with an over band magnet. The material is then screened, with the generated commercial waste then shredded to reduce its volume to save transportation and landfilling costs. In Israel, these costs are based on the material's weight and volume, with reduction benefitting the customer twice over. The second example of Arjes shredders in Israel is Carmel Natural Products Ltd., where there is a composting area and a collection point for green waste that is shredded on site with the 'Titan 950'. The material is screened and processed to a grain size of 0mm-20mm, as required in Israel. Using the Titan 950, stones and metal that went unnoticed during pre-sorting can be pre-shredded and sorted. The third example of Arjes shredders in Israel is a large scale waste collection point in southern Israel. A large part of the waste generated there is dumped and buried, but through using the Titan 950, the volume of household and commercial waste is reduced so that more layers of waste can be deposited. Further improving efficiency, the twin shaft on the shredder can be installed and removed quickly thanks to its quick change system.

www.arjes.de



Haas processing waste wood into biomass fuel

BWE Balthasar GmbH is a German waste disposal company that operates a waste sorting plant. The company was looking for a solution to process approximately 40,000t of waste wood annually into fuel for thermal utilisation in a biomass power plant, producing wood chips of 80mm-120mm with a minimum percentage of fines. To do this, Haas supplied a 'Tyron' pre-shredder and 'Alva' star screen with oversize recirculation. The Tyron features a twin shaft system and 'neodym' cross belt magnet making it suitable for hard wood railway sleepers with solid iron plates. An extra fine tool configuration provides BWE with excellent wood chip and high throughput. The Alva star screen separates the usable fraction (-120 mm) from the oversize which is returned to the shredder by the integrated recirculation conveyor. The integrated screw conveyor collects and discharges the usable fraction.

www.haas-recycling.de

Lindner's 'Polaris 2800' fuels one of Europe's largest cement plants

Enerco in Cyprus (an associated company of Vassiliko Cement Works) commissioned a Lindner shredder from the Polaris series to shred high calorific refuse derived fuels. Vassiliko operates one of the largest cement plants in Europe and to ensure the amount of energy needed to produce approximately 6,000t of clinker per day, it relies on Enerco's resource saving alternative fuels. The shredder produces fuel with a particle size of approximately 50mm out of 'end of life' tyres mixed and bulky waste and waste wood. "We are delighted to report that since we commissioned Lindner's new Polaris 2800, it's

Pentrunder[®] RS2

SALES START 1st OF MARCH IN SELECTED EUROPEAN MARKETS!

Revolutionary one-of-a-kind integrated motors

Efficient slip clutches for all motors

Integrated 18 kW drive motor

Two integrated brushless feed motors; one for the saw arm rotation and one for travelling along the track

Both feed motors can be used at the same time

Designed with the customer in mind

The Pentrunder RS2 saw head weighs less than 25 kg

Waterproof, IP65

Blade rotation in both directions

Shorter setup times

Quick disconnect coupling for blade

Easy fitting of blade

Same track system as all other Pentrunder machines

Highest stability and best handling

Easy assembly of saw on track

Same track feet mounting distance as for the HF-saws

One connector and cable only

Only standard hand tools needed for maintenance

Pentpak 3

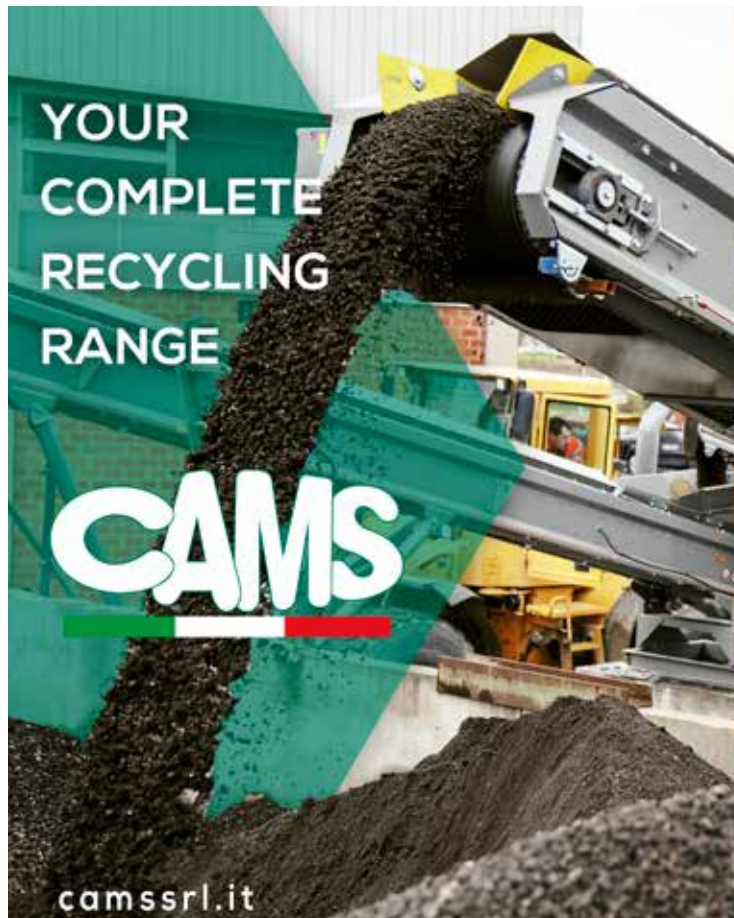
Waterproof, IP65

Highest EMC level

Built in RCCB - Residual Current Breaker Type B

Light weight, easy to fit blade guard

Best protection and handling



SYNTEC™
DIAMOND TOOLS



BLADES | CORE BITS | SURFACE PREP

HIGH-PERFORMANCE DIAMOND TOOLS



Whether cutting, drilling or grinding - we've got you covered! Contact us today:

North and South America: syntecdiamond.com | sales@syntecsolution.com | +1 760 737 7407
Europe, Asia and Oceania: syntecdiamond.com | sales@syntecdiamond.com | +61 8 8395 0277



been possible to increase our waste treatment capacity for the production of alternative fuels suitable for Vassiliko's calciner," says George Americanos, general manager at Enerco.

Another development from Lindner is the patented 'SF' synchronous fine cutting system which changes the angle between knives so that they act like scissors, applying force to a smaller area. This, according to Lindner, increases the tools' impact while maintaining energy consumption. Also, the cutting edges of the shaft are not aligned in parallel, with the shafts acting like two Archimedean screws rotating in opposite directions. This intake increases throughput and mixes the final fraction for a homogenous output.

www.lindner.com

New mobile screen, crusher and 'e-Power' range from Metso Outotec

The new Nordtrack S2.5 mobile screen is a small scalping screen designed for compact job sites and a variety of applications. With a compact and light weight structure, a two deck screen and a selection of different screening media, it is designed as a solution for construction contractors who experience frequent changes in site locations, or as use as a rental unit. Also new is the Nordtrack 1908 mobile impact crusher which features a design for smaller sized material reduction job sites accepting different kinds of feed material. "Nordtrack sales have been developing very well despite the pandemic; in fact, we have exceeded sales targets in some areas," says Vesa Tulioisela who heads the Nordtrack product offering at Metso Outotec. "However, we are always listening carefully to customer feedback. These two new products represent a concrete outcome of those discussions."

The new Lokotrack e-Power range brings the diesel-electric Lokotrack mobile crushing and screening units into one offering. The range includes 15 crushers and



six screens. The development has led to lower fuel consumption, with the annual CO2 emissions of Lokotrack equipment being 20,000t lower today than it was before 2010. "Lokotrack design principles are simple: optimise the operating costs, capacity, and end product quality of the customer application," says Kimmo Anttila, VP Lokotrack solutions at Metso Outotec. "Lokotrack is robust, energy efficient, and highly mobile – and it meets the versatile needs of customers today and tomorrow."

www.recycling.metso.com

Second Rockster crusher for Tropic Mining & Quarry in Burkina Faso

Tropic Mining & Quarry SASU (TMQ), based in Burkina Faso, has been using a Rockster R900 impact

crusher since 2008. To increase its limestone processing, a R1100S closed circuit impactor has been added to the fleet. The impactors are used to crush dolomite limestone which is used for production of cement, with the plan being to produce 600,000t of final material annually. "The R900 was exactly the right crusher to start the processing business," says Al Hassane Sienou, managing director of TMQ. "We are convinced in the robustness and longevity of these impact crushers and have therefore this time invested in a larger impactor from Rockster. Our new R1100S also has a screening system, which consists of a screen box and return belt so we can produce perfectly defined final product with an excellent quality."

www.rockster.at

Diesel free with the 'RM 120X' hybrid

Taha Zahir from Kafr Qasim, Israel, invested in a RM 120Go! in 2018. The crusher has been crushing C&D waste to produce road substructure aggregate. Processing takes place inside an enclosed hall, meaning it was essential that emissions are kept low. Taha Zahir was interested in a second low emission crusher choosing a RM 120X hybrid, which can be diesel-electric and purely electric powered. Daily, up to 1,000t of feed material, with an edge length of up to 800mm is processed to produce cuboid final aggregate (0-32mm). As the C&D waste is mixed with plastic, wood and textiles, Taha Zahir also ordered a dust suppression system and installed a wind sifter on both crushers. The RM Go! has been developed for RM's new 'Next' machines, with communication lights enabling the user to view the system's current status, and to operate the crusher from outside the danger zone with information on the crushing process displayed on the 'RM Go! Smart App'.

www.rubblemaster.com





Powerscreen reveals battery powered concept screener

Powerscreen's electrification strategy includes a new concept for crushing and screening: the 'Eco-Warrior' battery powered screener. This has been designed to deliver the screening action the company says its machines are famous for, whilst also being a self-charging, or plug in model that features a simple, quiet engine with no after treatment requirements. The required engine size has been cut in half compared with the diesel hydraulic unit, and the battery pack can produce emission free running or give a power boost. As part of Powerscreen's decarbonisation challenge, the product range has evolved to reduce environmental impact by making crushing and screening equipment more fuel efficient. This is done by using direct drive systems for the crushing range and improving engine capabilities and drive line design for the screening range. Another tool for fuel efficiency is Powerscreen 'Pulse' telematics that, among many things, helps customers see how and where their machines are being operated. The hybrid range now features more electric crushers/screeners, as well as models powered by combinations of diesel and electricity.

www.powerscreen.com

Komatsu Europe introduces new mobile jaw crusher

The new BR380JG-3 is powered by a Komatsu EU Stage V emissions compliant diesel engine, and comes with a CO2 off setting scheme. "The new BR380JG-3 is Komatsu's first diesel powered machine in Europe with net zero CO2 emissions," says Vince Porteous, product manager at Komatsu Europe. "Komatsu believes that solving environmental, social and governance (ESG) issues are key to the future." Operating weight ranges from 33,500kg to 35,310kg, engine power output is 159kW at 2,050rpm. The machine incorporates a two axis type deck vibrator for continuous flow of material to the two stage grizzly separator bars and a semi-automatic feeding system incorporates crusher overload detection and automatic feed control. The machine has a 1,065mm x 550mm jaw opening with tapered side plates, a maximum crushing capacity of up to 240t/h and a 1,050mm wide main conveyor (with a 120m/min top speed), which can produce a stock pile of 37t. The BR380JG-3 features a one touch start and stop function; a foldable ground level maintenance access step and other features including 'Komtrax' telematics and the 'Komatsu Care' maintenance programme. The

latter two offer fleet management and support, protect the machine against misuse and, according to Komatsu, guarantee maximum efficiency and uptime.

www.komatsu.eu

Cams presents biggest model in the 'Centauro' range

Cams has launched the Centauro XL 150.56, the biggest model in its Centauro range of mobile crushing and screening plants for construction and demolition waste, aggregates and asphalt. The Centauro XL 150.56 provides a bigger primary shredder, screener and secondary shredder with productivity up to 250t/h. The first machine has been sold in China and will be delivered in May 2021. The dimensions of the crusher are 1,500mm



x 900mm, hopper surface is 3.50m x 2m and the hopper capacity is 3.8m³. Applications include earth and rocks, construction and demolition waste, environmental decontamination and reinforced concrete, to name but a few. Optional features include GPS, recirculation conveyor and dust control. The series also comprises of the Centauro 100.32, Centauro L 120.56 and Centauro L 120.56 APR.

www.camssrl.it

New wheel mounted screener from Edge Innovate

The 'Edge SM186' wheeled mounted screener is a solution for applications such as recycling and soils, and incorporates a 5.4m x 1.75m two deck screen with interchangeable flip flow and scalper bottom decks. This is available with numerous screen media options and configurations. Design features include a low level feed hopper for loads from all three sides without the need of construction ramps; two or three way split configuration and a control system that features sequential start/stop functionality. The machine is fitted with a triaxle bogie with an 'ultra' underslung suspension complete with fifth wheel coupling and air brakes making it is easy to transport between sites. Operators can choose from different screen boxes including Edge Innovate's flip flow screen, scalping screen and rinser screen. Optional power sources include diesel/hydraulic, diesel genset or direct electric. As well as wheeled, the machine is available in a static chassis format. Other features include a modular top deck system allowing numerous media types to be installed side by side and screen box jack up functionality.

www.edgeinnovate.com



AGP Concrete Sawing Range



R13 Ring Saw

Power Input	3200W
Cutting Depth	220mm
Blade Diameter	330mm



CS11 Concrete Chain Saw

Power Input	3200W
Cutting Depth	300mm
Guide Bar Nominal Length	382mm



C16 Concrete Saw

Power Input	3200W
Cutting Depth	150mm
Blade Diameter	405mm

AGP®

AGP Europe

+32 53 21 62 22
www.agp-europe.com
info@agp-powertools.eu

AGP Taiwan

+886-5-5518689
www.agp-powertools.com
info@agp-powertools.com





New Tana 440 shredders

Tana 440 shredders have been improved in response to feedback, with the first new model being the Tana '440DTeco' shredder, which according to Tana, is more versatile, more productive, and easier to use. Its frame structure allows more space for material flow underneath the rotor and in addition to the 33 knife rotor, there is an option of 44 knives which Tana states increases capacity/output in tyre shredding by 25%. The cleaning combs are also bolted on, with different cleaning combs being available for different purposes. Furthermore, the conveyor system has been redesigned, with the transfer and discharge conveyors both having adjustable speed. The frame of the discharge conveyor is self-supporting enabling angle adjustment, with the scale system calibrating itself depending on the discharge conveyor angle. The over band magnet has been repositioned higher with the space between the magnet conveyor and the discharge conveyor being adjustable during operation. The new shredder also come with the 'Tana Control System' (TCS) which features a touchscreen display for a user interface that helps the user find the most efficient settings for each process. The shredders are available as track, trailer and electric models.

www.tana.fi

New 'I4C' compact impact crusher from McCloskey

The I4C the latest addition to McCloskey International's impact crusher line, with the power and productivity of a 1,125mm impactor in a compact format, with an impact crusher having a deeper chamber, creating greater tramp release space. With an aggressive blow bar and apron design, a four bar variable speed rotor and three crush zones with an optional fourth strike, the I4C can be set up as a primary or secondary crusher. An asymmetric

feeder reduces bridging and, combined with the single unit feeder-hopper construction, delivers motion and vibration for the material as it moves into the impact chamber. The I4C features a curved belt on the main conveyor that manages material delivered to its 4m high stockpile. The I4C is equipped with a chamber door safety sensor, built in safety shutdown functions, chamber safety arm and a platform for changing blow bars. McCloskey states that the IC4 is, size for size, it's most powerful impact crusher. "We are bringing the I4C to market to respond to the demand for a heavy duty, high production impact crusher with high mobility and enriched safety features," says Toni Laaksonen, senior vice president, McCloskey International.

www.maccloskeyinternational.com

New products from Keestrack for 2021

Keestrack's new 'I4e' tracked mobile reversible impact crusher can be used for secondary crushing of rock and recycling building materials. The design has a large, variable crushing chamber, rotor and electronically monitored hydraulic gap adjustment that allows feed sizes of up to 250mm ensuring end products of up to -2mm in closed circuit with secondary and tertiary crushing being able to be combined in one mobile solution. The system features a diesel-electric drive concept and weighs 41t. The drive unit has a 447kW diesel engine and its 300kVa generator is designed as a removable drop off module. Also new is the Keestrack F6, which is the first production model of new road milling machine line, featuring a new milling drum unit

with a specific pick design. The working width of the 30t model with a 447kW Cummins engine is 2,000mm, and a working depth of up to 320mm. Prototypes and pre series models have undergone tests in Asia where the series is produced, whilst parallel to their introduction there, introduction strategies in other regions are being worked on.

www.keestrack.com



Kleemann announces new mobile jaw crushing plant and more

Kleemann's 'Mobicat MC 110(i) Evo2' is a development of its predecessor. It has output of up to 400t/h and can be used in quarrying and recycling applications where emphasis is on coarse crushing. The crusher features a two stage overload system which prevents blockages and material bridging. If uncrushable material enters the crushing process, the CSS (close side setting) opens twice as fast as its predecessor, or, as an option, up to forty times faster. Other features include the 'Continuous Feed System' and an extra-long articulated crusher jaw. Kleemann has also introduced mobile classifying screens, the 'MobiscreenMS 1202 and MS 1203', with a feed capacity of up to 750t/h. They are available with two or three screen decks and have screening surface areas of 12m² in the upper and middle deck, and 11m² in the lower deck. The feed hopper has a holding volume of 10m³. Both screens can be combined with crushing plants from the Kleemann 'Evo' and 'Pro' series. They are driven by hydraulic power units, with a 'Dual Power' option allowing them to be driven by electric power.

www.wirtgen-group.com



WDS 530

WALL, CEILING AND FLOOR GRINDING HAS NEVER BEEN EASIER



- » The WDS offers professional grinding technology with outstanding surface performance
- » Replaces hazardous and manual work on walls, ceilings and floors

**If you would like to have a consultation
or demonstration appointment simply contact us. Thank you!**



More details
about WDS 530

+49 (0) 7161 2005 0
info@schwamborn.com
www.schwamborn.com

 **schwamborn**

...gaining ground with us!

RONDA® VACUUMS FOR LIFE



Heavy duty vacuum cleaners with filter technology second to none



DUST EXTRACTORS H-CLASS

RONDA® 200H Power



DUST EXTRACTORS H-CLASS

RONDA® 1800H Power



VACUUM CLEANERS H-CLASS

RONDA® 2800H



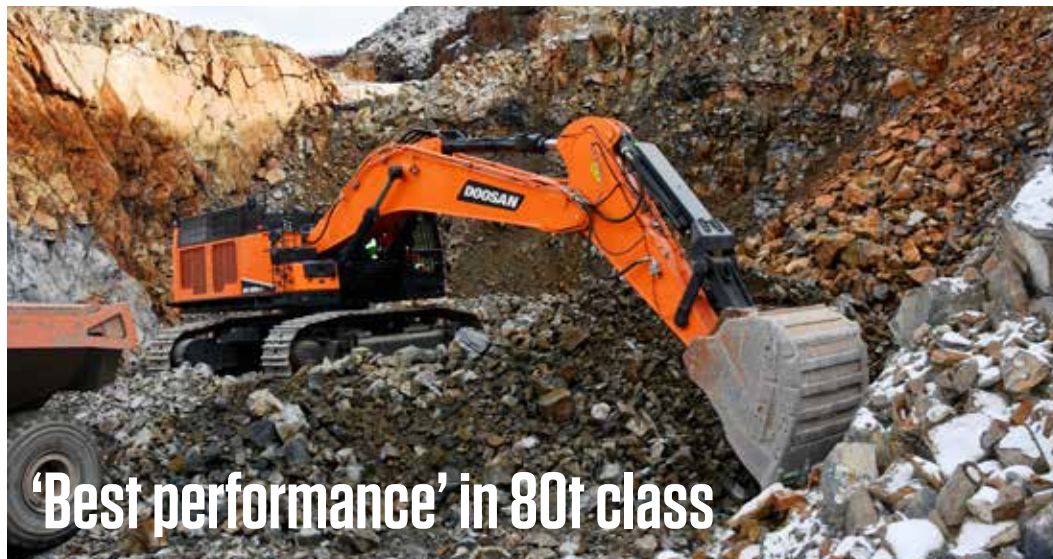
WATER SLUDGE RECYCLING

RONDA® 350

A large step towards a healthy work environment

V. BRØNDUM A/S

See the full range of RONDA® vacuum cleaners on www.broendum.com



'Best performance' in 80t class

Doosan has launched the new DX800LC-7 Stage V compliant 80t crawler excavator, the largest excavator model ever manufactured by the company. Driven by what the company says is the most powerful engine in the 80t class, the DX800LC-7 also has exceptional hydraulic flow for this size of machine, to deliver higher levels of productivity and lower fuel consumption. Like all Doosan excavators, much attention has been given to operator comfort and safety. The DX800LC-7 has a new, spacious operator cab, equipped with ergonomic controls and instrumentation, whilst special care has been taken to ensure noise is kept to a minimum through enhanced sealing of the engine compartment and extensive use of sound-dampening materials. All components and assemblies are designed, built and tested to ensure durability. Multi stage filters and features such as track guards and cylinder guards for the boom and

arm, the auto grease system and greased and sealed track links are designed to provide reliability and a long service life. The DX800LC-7 is easy to maintain, further reducing downtime to a minimum.

The DX800LC-7 is primarily intended to serve customers in mining and quarrying applications, removing overburden and loading large amounts of material into articulated dump trucks or rigid frame trucks. The DX800LC-7 may also be operated on large construction and infrastructure projects, particularly where considerable amounts of material need to be excavated and stockpiled or loaded into trucks to be moved. With this extension of its excavator line, Doosan now offers machines from 1t to 80t to serve a wide spectrum of customer needs and applications in construction, mining, rental, landscaping, waste, recycling and forestry.

Terex launches 'revolutionary' **DUST SUPPRESSION SYSTEM**

Terex, a global manufacturer of lifting and materials processing solutions, is proud to introduce 'Aquamist by Terex' dust suppression system. This is now available across its materials processing brands EvoQuip, Fuchs, Powerscreen, Terex Ecotec, Terex Finlay, Terex MPS and Terex Washing Systems.

The 'Aquamist by Terex' dust suppression system offers an improvement over conventional jets or water sprays to manage the build-up of dust and better protect workers on jobsites by using a high capacity misting fan that produces finely divided water droplets in the size range 10-150micron diameter. At this size, they easily combine themselves with dust particles of similar dimensions and precipitate them out of the air and, because water mists, 'float' more than a conventional spray, meaning that they cover and envelop the dust cloud more effectively.

Paul Kearney, vice-president of Parts and Solutions for Terex Materials Processing explains: "It is globally accepted now that airborne dust that is formed on jobsites can significantly contribute to respiratory illnesses. As increased legislation comes into place globally to mitigate this, more effective control of dust is needed. Our Aquamist system will better support worksite operations and strengthen our commitment to making the workplace a safe and healthy environment." For more information on 'Aquamist by Terex', interest parties are advised to contact their local Terex distributor.





GIVE YOUR BUSINESS THE UPPER HAND

To build a stronger, more profitable business, you have to get hands-on. Real knowledge comes from testing the latest equipment. From touching game-changing technologies. From getting your hands dirty in interactive trainings and skills competitions. **World of Concrete** is the commercial construction industry's largest annual international event for concrete and masonry professionals and puts these kinds of immersive opportunities at your fingertips — join your community here and experience real, tangible results.

Hands down, the best decision you'll make.
Register now at worldofconcrete.com



JUNE 8-10, 2021

EDUCATION: JUNE 7-10, 2021

JANUARY 18-20, 2022

EDUCATION: JAN 17-20, 2022

LAS VEGAS CONVENTION CENTER
LAS VEGAS, NV, USA

BIG TOYS

FOR LOCKDOWN BOYS

In late April, an announcement came that bauma has been confirmed for October 2022. That's probably the best piece of news the construction industry has heard since the beginning of the pandemic. As the world's biggest trade show, bauma is widely expected to have a healing effect on international business. There is no doubt that visitors to the Messe München will be greeted with a veritable deluge of new machines and tools. And there is also little doubt that most of the demolition excavators presented in this feature will be on display in Munich. Andrei Bushmarin reports.

Doosan to add third model to high reach demolition range

Doosan Infracore Europe is about to launch the DX-380DM-7, the third model in the company's new high reach demolition range, joining the existing DX235DM and DX530DM excavators introduced last year. The machine features a high visibility 30° tiltable cab, which is particularly suited to high reach demolition applications. The maximum pin height of the demolition boom on this model is 23m. The DX380DM-7 retains a hydraulically adjustable undercarriage, which extends to a maximum width of 4.37m for enhanced stability. The width of the undercarriage can be retracted hydraulically to 2.97m for transportation. The adjusting mechanism is based on a permanently lubricated, internal cylinder design, which minimises resistance during movement and helps prevent damage to components. Like all Doosan demolition excavators, standard safety features





include a FOGS cab guard, safety valves for the boom, intermediate boom and arm cylinders and a stability warning system. A modular boom design and hydraulic lock mechanism enhance the machine's flexibility. This multi boom design facilitates an easy change between a demolition boom and an earthmoving boom to accomplish different types of work on the same site. It also allows the earthmoving boom to be mounted in two different ways. A special stand is supplied to facilitate the boom changing operation. A cylinder based system is used to push the locking pins into place to help complete the procedure. When equipped with the digging boom in the straight configuration, the DX380DM-7 can work to a maximum height of 10.43m.

www.eu.doosanequipment.com

German specialist chooses Sennebogen 830 E for selective demolition

When demolition and recycling specialist Brandhuber Transporte GmbH started a major deconstruction project in the historic part of Straubing's ducal city last December, the company did not have to go far looking for the right equipment, with the Sennebogen's headquarters located only 2km away from the jobsite. The project involved selective demolition of three buildings over a period of four weeks using a Sennebogen 830 E excavator. With an engine power of 168kW and 360° operational capability, the 45t machine effortlessly

pulled down the four storey former residential buildings one after the other and sorted construction debris into allocated containers right on site. Company managing director Manfred Brandhuber commented on the project and the machine's performance: "For us, selective dismantling means removing material in a controlled and safe manner. Normally, we rely on earthmoving equipment, but it simply didn't offer us the necessary high reach for this job. Since Sennebogen is located vir-



tually around the corner, the 830 E demolition excavator was readily available for us to rent. The elevating and tilting cab is really a practical feature for comfortable demolition. That's good for my neck because I can work in a natural posture and at the same time enjoy a clear view of my attachment." The 4.5m wide telescopic undercarriage, in particular, contributes to the stability of the excavator. Brandhuber continues: "Today, we were removing the roof of the building. First, we grabbed the chimney at a height of 15m, moved it to the ground in one piece, disassembled the roof's remaining elements and loaded bricks, metals or wood into the various containers for subsequent recycling." The machine's stability and 360° capability were crucial for Brandhuber, because the endless upper carriage rotation eliminates time consuming repositioning manoeuvres. Brandhuber adds: "Fast support is important to me, as I depend on the functionality of jobsite equipment. That's why I really appreciate the personal contact with Sennebogen and the resulting short lines of communication."

www.sennebogen.de

Straight boom transforms the Volvo EC380E into demolition monster

Fitted with a 7m straight boom and a purpose made arm, the new Volvo EC380E model does away with the traditional 'boom and stick' approach of digging oriented excavators, with the extra-long straight boom



ECOLINE ROTATABLE PULVERIZERS FOR MID RANGE EXCAVATORS

- COMPETITIVELY PRICED
- FULL OF DEMAREC DNA
- EQUIPPED WITH EXCHANGEABLE WEAR PARTS
- THE WELL-KNOWN DEMAREC QUALITY

**Contact us
for a demo!**

In the end... It's only about the right tool

DEMAREC. De Hork 32, 5431 NS Cuijk, the Netherlands. Tel.: +31 (0) 485 442300, info@demarec.com

DEMAREC Deutschland. Im Rohnweiher 14, D-53797 Lohmar, Germany. Tel.: +49 2205 92027 0, info@demarec-deutschland.de

KINSHOFER UK. Shipton Downs Farm, Cheltenham GL54 4DX, United Kingdom. Tel.: +44 (0)161 406 7046, sales-uk@kinshofer.com

KINSHOFER USA. 6420 Inducon Drive - Suite G, Sanborn, NY, 14132. Tel. +1 (716) 731 4333, sales-usa@kinshofer.com

KINSHOFER Canada. Mainway Drive, Unit #11 - Burlington, ON L7L 7G5. Tel. +1 (905) 335 2856, sales-northamerica@kinshofer.com



demarec.com



BORN TO

SAVE MONEY AND TIME



SCREENING BUCKET

Screens vary type of material to the needed size directly on site.

CRUSHER BUCKET

Transforms waste material into reusable material for backfill.

ONE SYSTEM TO
REDUCE > REUSE > RECYCLE
IN MANY APPLICATION AREAS



► SCAN & PLAY

info@mbrusher.com
MBCRUSHER.COM



providing significant height and reach advantages over conventional machines. The cab is protected against falling debris by a frame mounted falling objects guard. The roof and one piece front windows are made from P5A glass, resistant to high impacts. Night visibility is aided by standard LED lights on both the boom and platform, with additional light options available for the cab and counterweight. The machine also comes with a few specific features that are valuable in demolition applications. These include the X1 and X3 auxiliary piping; a quick fit and oil drain line and water lines that are connected to a dust suppression system. The dust suppression system consists of a 30l/min lifting pump, which feeds water into four arm based nozzles creating a fine mist. The system can work in either auto or manual mode. In the auto mode, water is only sprayed when the attachment is operating. Designed to deal with high impact materials and demanding terrains, the Volvo EC380E straight boom has a solid main frame made of heavy duty plate steel with bolt head protection. There is also heavy duty ('eXtreme Duty') undercover protection, a heavy duty belly guard and a full track guard. A slew ring cover and heavy duty side doors with screens and

louvers offer added protection. The EC380E straight boom excavator comes with a choice of cab entrances consisting of either a fixed cab entrance and thicker side impact protection system (SIPS), or a foldable cab entrance with narrow SIPS; the latter being designed to make transportation easier. According to the manufacturer, the range will shortly be expanded with the addition of a 30t class EC300E straight boom excavator boasting the same features and benefits.

www.volvoce.com

Cat aims higher with new 340 UHD model

Purpose made for the demolition of tall structures, the new Cat 340 UHD excavator boasts 13% higher pin than the forerunning 340F UHD model, allowing it to reach up to eight storey buildings. The machine's coupling system permits switching between two UHD fronts and retrofit booms and sticks with no special tools in 15min. With two UHD front options available, the 22m front offers a maximum 3.7t weight at stick pin and maximum horizontal reach of 13.55m at stick nose over the front and side of the machine. Working with a maximum weight at stick pin of 3.3t, the 25m

front offers a 13.33m reach at stick nose over the front and side of the machine. This matches characteristics of Cat multiprocessors, specifically the MP332 and MP324 models. Contractors can choose between one or two piece boom options for truck loading or lower reach demolition work. Three stick options are available at the lengths of 2.8m, 3.2m and 3.9m. The Cat 'Payload' system provides on the go weighing and real time estimates of the payload, so operators can achieve precise load targets when working with the single piece retrofit boom. The excavator is powered by a 232kW, EU Stage V-compliant Cat C9.3B engine running on either diesel or biodiesel fuel. The 340 UHD features a 30o tiltable cab for efficient and comfortable demolition of tall buildings. For better visibility of the attachment at height, a UHD front with work tool camera is provided. The cab is equipped with FOGS, and 10mm front and roof P5A laminated glass for safety. Standard rear view and side view camera enhances visibility of the operating area. Apart from Cat Payload, the 340 UHD with the single piece retrofit boom, is equipped with a host of features designed to increase productivity. Cat 'E-fence' and Cat 'Grade' with 2D automati-



cally determine depth, slope and horizontal distance to grade through the touch screen monitor. Standard Cat 'Product Link' captures critical machine operating data and condition, conveying data to field managers and the office via 'VisionLink'. 'Remote Troubleshoot' analyses real time machine data captured by Product Link, which allows workers to manage fleet location, hours, and maintenance schedules and delivers alerts to mobile devices.

www.cat.com

JCB 220X crawler is now available in demolition specification

Following a programme of extensive testing, the JCB 220X crawler excavator is now available in the 'XD' demolition specification. Certified to FOPS Level 2, a protection cage shields the driver from falling material. All JCB XD excavators feature a side impact protection system (SIPS) designed to protect the fuel and hydraulic tanks, cooling pack and the hydraulic pump bags and is fitted down both sides of the machine's upper structure. Underbelly protection has been improved with an increase in thickness from 2mm to 10mm to guard vital machine components on the upper and lower structure. For attachment handling, the UK manufacturer offers the option of 'Advanced Tool Select'. On the display

10 attachments can be setup with desired flow and relief pressure. The upper structure is now 2.7m wider, and 200mm broader than their predecessors, with the



additional space enabling JCB's engineers to mount the main boom in the centre of the machine, rather than at an offset. This reduces stress on the slew bearing and provides increased accuracy for the operator when trenching. It also permits the use of larger buckets without impacting the tracks. Though the boom and arm are unchanged, JCB will offer the option of boom float with two modes to make grading easier and to reduce stress when operating a hydraulic breaker.

www.jcb.com

Komatsu rolls out a 'whale' of an excavator

Komatsu Europe has announced the introduction of the new PC2000-11 hydraulic excavator. Weighing in at a whopping 202t, this giant boasts an innovative engine pump control system that optimises hydraulic flow for extra fast cycle times. Ideal for loading 60t to 150t rigid frame haul trucks, the PC2000-11 is also an excellent tool for stripping overburden and loading coal and shot rock. It has a simplified power module (cooling package, engine, PTO, and hydraulic pumps) that provides easy access to all major components, lowers noise levels in the cab, and reduces labour hours when time comes for a planned overhaul. Gregory Peeters, Komatsu Europe product manager says of the new model: "Engage the new 'Power Plus' work mode and productivity levels are off the charts. To cope with this extraordinary power, the frames, boom, arm, and undercarriage are all strengthened to ensure maximum uptime in even the most extreme applications." The PC2000-11 benefits from a huge mining class ergonomic cab. Standard safety features include a hydraulically activated access/



gress ladder, external emergency shutdown switches, neutral detection and 'KomVision' – Komatsu's patented monitoring system. A seven camera system provides a 360° bird's eye view of the working area on a dedicated 250mm touch screen monitor. Komatsu's proven after treatment system allows the PC2000-11 to meet the EU Stage V regulations without the need for Adblue. Offering an increase in productivity of up to 12%, the PC2000-11 can load more trucks per shift. The excavator is equipped with selectable working modes to tailor the performance to different applications, including the brand new Power Plus mode. Customers can expect extended component life on the PC2000-11 thanks to thicker, stronger boom plates and castings; strengthened track and centre frames; larger diameter carrier rollers and improved hydraulic cylinder seals. The new seals on work equipment cylinders enable the PC2000-11 to withstand the most abrasive applications.

www.komatsu.eu

Liebherr-France SAS hands over its largest 'demolisher' so far to a German customer

On 26 February 2021, the German demolition company AWR Abbruch GmbH received the key to its new R 980 demolition excavator in an official handover ceremony at Liebherr's plant in the French city of Colmar. The ceremony took place in the presence of Liebherr-France's senior management and Mrs Brigitte Klinkert, the French Minister of Labour, Employment, Vocational Training and Social Dialogue. The largest Liebherr demolition excavator so far, it was designed and manufactured by Liebherr-France SAS in close cooperation with the German contractor who already owns a number of Liebherr demolishers, general purpose excavators and wheel loaders. With an operating weight of 190t and a counterweight of 35t, the R 980 comes with four boom options measuring 21m, 26m, 36m and 55m respectively. The 21m and 26m booms are



designed to handle attachments of up to 15t, the 36m version takes on up to 7t tools and the 55m operates with up to 3t attachments.

www.liebherr.com

Kobelco launches its largest short radius excavator in the 38t segment

Kobelco Construction Machinery Europe B.V has announced the launch of its largest short radius (SR) model in the 38t segment. Weighing in at over 36t, the SK380SRLC is driven by a 200kW Stage V-compliant turbo charged Hino diesel engine with a 'Power Boost' feature. The machine's powertrain generates a drawbar force of 314kN for smooth and steady operation across rough terrains and slopes. In addition, the combination of high hydraulic pressure ('Heavy Lift') and balanced chassis layout delivers a lifting capacity of 12,390kg (from

ground level) even when digging at a reach of 6m. The SK380SRLC's spacious cabin incorporates a number of features to improve safety, operational comfort and general aesthetics. The Kobelco branded 'Grammer' air cushioned and heated suspension seat absorbs vibrations on challenging terrain. The colour LCD multi display screen shows fuel consumption, maintenance intervals, digging mode and other important information. Up to ten pre-set attachment settings can be selected to match the attachment being used. The tilt up opening FOPS guard level II comes as standard, providing access to the

external roof glass. Additional safety is provided by three standard cameras located on the left, right and at the rear of the machine. A two piece boom option for the SK380SRLC is expected to be introduced later this year to further enhance the machine's usability in confined spaces. Peter Stuijt, product manager for Kobelco Europe, comments on the new excavator: "The arrival of the SK380SRLC is a result of comprehensive market research and customer feedback, coupled with Kobelco's extensive experience in innovative technologies. We're seeing more demand for short radius machines, due to increased requirements for urban infrastructure and utilities, and the SK380SRLC offers all the benefits of a heavy machine, including high power and increased lifting capacity, but in a much smaller working footprint."

www.kobelco-europe.com





BAUMA POSTPONED TO OCTOBER 2022

bauma (Munich) has been postponed to autumn 2022 following discussions between Messe München, industry representatives and the advisory board, with the new dates being 24 to 30 October 2022. Due to the time needed for planning by exhibitors, attendees and organisers, the decision had to be made now, providing exhibitors and prospective visitors' time to plan their participation.

Initially planned for April 2022, discussions with exhibitors and other interested parties led to the recognition that the April dates involved too many uncertainties in view of the global pandemic. The prevailing opinion was that it is currently difficult to assess whether worldwide travel would be allowed and unhindered. This was particularly pertinent to global exhibitors, and companies expecting visitors from across the globe. Due to the high costs involved in stand construction, logistics and accommodation, the bauma organisers were advised to postpone the show as an attraction of the trade show is to bring together the global construction industry and to be a hub, which would no longer be the case if travel was restricted.

With this decision, exhibitors and visitors now have clarity and a secure basis for planning their attendance. Klaus Dittrich, chairman and CEO of Messe München explains: "The decision to postpone bauma was not an easy one for us, of course. But we had to make it now, before the exhibitors start planning their participation in the trade show and make corresponding investments. Unfortunately, despite the vaccination campaign that has been launched around the world, it is not yet pos-

sible to predict when the pandemic will be largely under control and unlimited worldwide travel will be possible again. This makes participation difficult to plan and calculate for both exhibitors and visitors. Under these circumstances, we would not have been able to fulfil our central promise that bauma, the world's leading trade fair, represents the entire spectrum of the industry and generate international reach like no other comparable event. After all, bauma's last edition welcomed participants from over 200 countries around the world. Hence, the decision is consistent and logical."

Joachim Schmid, managing director of the Construction Equipment and Plant Engineering Association of the German Engineering Federation (VDMA), supports the decision and welcomes that Messe München has followed the industry's request: "The decision is tough, but it gives all parties the planning basis they need. The industry will now do everything it can for a strong bauma in October 2022. Even without a health crisis, companies need to overcome challenges such as digitalisation, autonomous construction sites and sustainability, and stay abreast of changes to avoid falling behind. For this, they need bauma as an innovation

barometer and networking platform. In next year's October, we will all meet again in Munich."

Regardless of the postponement, the technical and organisational planning for bauma 2022 continues. The core of bauma 2022 will be the 'face to face' event, augmented and expanded by digital offerings. "This allows customers from all over the world to participate in bauma, even if they can't or don't want to travel to Munich," explains Klaus Dittrich. Detailed answers to all questions on the postponement of bauma can be found at: www.bauma.de. Exhibitors who have already registered will also receive further information there.

New FR200 'Genus' scarifer from VonArx

VonArx has launched a new and improved 200mm FR200 Genus scarifier. Along with significantly low vibration levels that reduce injury risks for operators, the FR200 Genus has improved dust pick up capabilities with a larger, repositioned dust port to maximise capture of dust and debris that any machinery creates. Founded

in 1941, VonArx specialises in surface preparation equipment for the construction, road, and maritime industry. Machines are well known and respected for their high quality and performance. Since 2019 the company has had its base in Plovdiv, Bulgaria and continues to develop high quality equipment with a focus on work health.



**GET THE
RED
CRUSH!**

RCC-SERIES

EXTREME POWERFUL
HEAVY INDUSTRIAL CONCRETE CUTTER



Power

Enormous power combined with short cycle times



Convenience

Easy replaceable cutting teeth



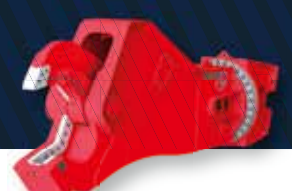
Material

Built of high performance structural steel



Modern

Fitted with our new RAMPLIFIER® technology



Cummins B6.7 reduces running costs and CO2 emissions

Cummins Inc. has released the latest B6.7 'Performance Series' engine that meets EU Stage V, and delivers near zero emission levels of NOx and PM. It also features Stop-Start capability to help operators further reduce running costs, as well as their environmental impact, through lower noise and CO2 emissions.

Jeremy Harsin, Cummins Off-Highway business director said, "Stop-Start capability is included in the B6.7 to further cut fuel consumption as well as overall maintenance costs. Fuel savings should be between 5% and 10% but could be higher based on the machine duty cycle. This feature also delivers the sociability benefits that contractors are looking for by reducing on site noise and exhaust emissions. Improving fuel efficiency reduces CO2 greenhouse gas emissions."

Stop-Start has been integrated into the B6.7 platform with both hardware and software changes. Specially developed bearings in the engine, along with upgrades to the flywheel ring gear and starter motor ensure long life and reliable performance with frequent starts. "Many machines sit idling on construction sites for long periods in between tasks. Stop-Start not only reduces running costs, it lowers running hours for the machine helping maintain higher residual values," added Harsin.

The six cylinder B6.7 engine is available from 116kW-243kW with a high peak torque of 1,375Nm. With a low weight and compact size, it delivers a high power density that enables it to replace engines of higher displacement with no impact on machine operation. This supports machines needing higher speed power delivery, with low end torque capability for transient performance benefits. Equipment manufacturers can use the B6.7 to improve machine capability and offer more value to their customers.

This product is ideal for use in a range of off road equipment including crushers, screeners, wheel loaders, excavators, fork lift trucks, terminal tractors and empty container handlers. It can be tailored by Cummins' engineers mechanically and electronically to each machine type. This powertrain integration capability delivers excellent all-around performance and running costs to match the required operating cycle.



Outstanding results reported with the Tyrolit bump cutting and grinding blade

Tyrolit has reported that the grinding of concrete surfaces of roads and airport runways is easily accomplished using the 'Premium BGX-C3' diamond blade. The laser welded diamond blade is especially designed for all bump cutting and grinding applications and available with diameters ranging from 300mm to 485mm. Thanks to the use of 'TGD' technology, the blades are run smoothly and have an exceptionally high and constant cutting performance. The results are said to be impressive with an optimum grinding pattern with clean cutting edges. The BGX-C3 blade also has a long lifetime in combination with fast cutting and is available in different specifications for different concrete aggregates.

The right combination

Beside professional tools, Tyrolit also offers an assortment of machines for grinding the concrete surfaces of roads and airport runways. In grinding operations, the PC4504CE delivers high performance with the 9m long machine having a 127cm wide grinding shaft, which can be fitted as standard with up to 250 BGX-C3 premium diamond saw blades with a diameter of 485mm. To meet the various requirements in grooving, the product range includes compact machines as well as the almost 9m long 'PC1505 Groover', which can be equipped with Tyrolit diamond saw blades with diameters up to 300mm.



New Lavina 'Elite' dust extractors from Superabrasive

With what the company says are industry leading technology and features, the all new Lavina Elite V32 dust extractors take dust collection to a new level of performance and productivity. An integrated pre-separator captures the large particles and extends filter life, whilst a second cyclone around the conical filter captures the mid-sized particles. A conical M class filter with high air permeability and large filter area provides better suction and a longer working time

between cleaning intervals. With a large filter area, the Hepa filter H13 captures 99.95% of particles between 0.15-0.23µm. Other features include an integrated emergency light to remind the operator to clean the filter, an option to upgrade to automatic cleaning and a lighter and more compact body design. The new Lavina Elite dust extractors are offered in propane (V32GE-470cfm) and electric models (V32E-490 cfm, 220V or 480V).

MEET VIKING®

THE NEWEST SCRAPER FROM NATIONAL FLOORING EQUIPMENT

**PATENTED
DUAL LIFT
TECHNOLOGY**

**CLIMATE
CONTROLLED
CAB**

**EXTENSIVE
SAFETY
LIGHTING**

**ROPS AND FOPS
CERTIFIED CAB**

**49.5 HP
TURBO DIESEL
MOTOR**



**SEE VIKING®
IN ACTION**

**NATIONAL
FLOORING
EQUIPMENT**

Made in America Since 1968

NATIONALEQUIPMENTDIRECT.COM | 800.245.0267



Husqvarna and HTC COMBINE THE BEST OF BOTH WORLDS

Husqvarna Construction has announced that the HTC products, services and solutions are now fully integrated into the global Husqvarna Construction offering to the surface preparation industry. The introduction of the rebranded range, promoted under the tagline ‘The Orange Evolution’, is enhanced with the launch of brand new products.

enhanced process of the ‘Superfloor’ method to polish concrete floors.

“We are committed to developing the floor grinding industry; we strongly believe in the benefits of polished concrete floors and we want to help our customers win interesting flooring projects as well as complete their

work in the most productive, sustainable and safe manner,” said Stijn Verherstraeten. The new product range is available and ready for purchase and delivery in most markets from 3 March. Service and support will remain unchanged with all existing equipment of both brands being supported and served as before.



By combining two existing eco systems, floor grinding customers will have a much wider choice of products, features and solutions at hand – all under one roof and one brand. “We are thrilled to introduce the most comprehensive product range on this growing market for surface preparation. With this powerful combination we open up a whole new world of options for our customers,” says Stijn Verherstraeten, vice president Concrete Surfaces & Floors.

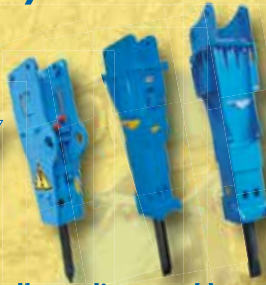
To further build on the strong heritage of HTC, Husqvarna Construction has launched a series of product innovations. These include a new family of high performing polishing tools; a tool holder ‘Multi’ allowing to fit both ‘Redi Lock’ and ‘EZchange’ tools; a new portfolio of edge grinding tools for hand held grinders; a new range of chemicals for the creation and maintenance of polished concrete floors and an



shop.idromeccanica.com



Hydraulic hammers



Compactors



Hydraulic shears



small, medium and large class

WE MANUFACTURE

Multibrand spare parts



**INNOVATION, QUALITY,
RELIABILITY ARE OUR MISSION**

IDROMECCANICA ITALIANA srl
via Antichi Pastifici, 2 - Molfetta (Ba) - Italy



contacts



info@idromeccanica.com
www.idromeccanica.com

+39 080 3388199



+39 347 2819280

**follow
us**



DIAMOND

HIRE & SALES

TWINCA

DUMPER

Electric Mini Dumpers

500-800 kg Load Capacity
110v-240v Charging
All Day Run Time
Skip Loading



info@diamondhiresales.co.uk



+44 (0)1252 524141



www.diamondhiresales.co.uk



Erkat transverse drum cutters

Five Erkat transverse drum cutters have been chosen for New Zealand's largest ever transport infrastructure project. Supplied by Erkat distributor Digga NZ, the Erkat attachments will be used for the 3.45km twin tunnel underground City Rail Link (CRL) now under construction up to 42m below Auckland city centre. The two larger Erkat drum cutters are currently in operation excavating the tunnel opening. The smaller attachments will be used for wall profiling, excavating service tunnels and other tasks.

New Zealand has a population of around 5M, with Auckland home to 1.7M, being the country's largest city. Jointly funded by the Government and Auckland Council, the CRL is estimated to cost around €2.63B. The project will transform Auckland's downtown transport centre into a two way through station that better connects the Auckland rail network, doubling its rail capacity. The main CRL works, including stations and tunnels, will be delivered by a consortium of seven companies called the Link Alliance. Completion and handover of the City Rail Link is scheduled for late 2024.

Digga NZ's scope of supply

Dean Hewlett, product manager, Digga NZ Ltd. stated: "CRL Link Alliance requested quotations for Erkat transverse drum cutters suitable for 8t, 14t, 34t and 45t excavators. We discussed the project application with them and determined that these attachments would be a suitable choice to handle the geological formations they would be working in."

The transverse drum cutter attachments supplied by Digga were an Erkat ER1500 and ER250, two Erkat ER600's and an Erkat ER2000-2TU. With the assistance of Digga NZ, the machines were mounted on a Yanmar Vio80 excavator, two Doosan DX140LCR excavators and Liebherr R924 and R950 tunnel excavators respectively. The Erkat ER1500-1X and ER2000-2TU are now being used to excavate and create the opening/starting point for the journey of the 7.15m diameter TBM's (Tunnel Boring Machines). The smaller ER250 and ER600's will be used for wall profiling, excavating service tunnels and other tasks.

Dean Hewlett added: "To date, CRL Link Alliance are extremely satisfied with the performance of the Erkat drum cutters. Digga NZ provided the support they needed during the procurement and mounting of the attachments on the carriers. We have also provided parts and service assistance and will carry out repairs on the machines if required."

Dry stone walling becomes more structured

At the end of 2017, UNESCO confirmed how valuable the art of drystone walling is, adding the building technique to its Intangible Cultural Heritage list, to protect and safeguard it. Among the reasons for recognising and protecting the construction method is its vital role in preventing landslides and floods, fighting soil erosion and desertification while respecting the environment. By adding the process to the list, eight European countries can share techniques as while the methods might differ, they all involve the placing of one stone on top of the other without using any other material except dry earth.

Even the most successful techniques have incorporated more modern methods, often through the use of equipment to aid artisans in their work enabling the finishing of the job faster and providing enhanced precision. One such piece of equipment is the 'MB-G' sorting grapples that have claws that grab, move and arrange rocks or stones of various types and sizes, with extreme precision and accuracy. On three different con-



struction sites located in France, Germany and Slovenia, the MB-G was used to help build dry stone walls as the grapple's inclined plate enabled a broader range of actions whilst placing the stones precisely. This would have been impossible with tools, such as a digging bucket, and, it has the capability to install a multipurpose blade kit, which helps facilitate the grip of the unit controlling materials with a variety of weights and shapes.

The reinforced soil technique can be considered an evolution of the dry stone wall process, being a naturalistic engineering solution that allows the replacing of concrete walls with structures that have a reduced environmental impact. Using dry stone walling means that local materials can be used as fill, which has a natural appearance and better adapts to the ground's movements and is easy to install and maintain. In Venice, a company was commissioned to build a reinforced soil retaining wall to replace an existing wall made of concrete masonry.

Sonia, the Venetian company's geo-technician, explains how they solved their waste material handling and the manoeuvring space limitation problems: "To do the job, we relied on MB Crusher equipment during the crushing and screening stages. We saved on the costs of purchasing material by crushing the stones we recovered when we screened the soil, which we would have had to dispose of otherwise and pay substantial costs to obtain the stone that we used as drainage material. On the other hand, we reused the screened soil immediately to fill the formworks. I thank MB Crusher for the advice that allowed us to make money by saving time and reducing our expenses, all while respecting the environment."

Arjes shredder shows potential in Israel

In general, waste separation and recycling have not been addressed as intensively in Israel as in Europe. Nevertheless, strong interest has been shown in equipment to handle diverse mixed material. In particular, the Arjes 'Impaktor' and 'Titan' shredders, whose strengths lie in the asynchronous principle of the shredding shafts, have proved very popular.

Carmel Natural Products Ltd., which has been responsible for sales in Israel for Arjes for several years, has already convinced many of the potential of the machines as the following examples highlight.

The recycling company Gal Michsur, based in northern Haifa, has been using an Impacktor 250 evo to process materials such as green waste, commercial waste, glass, nylon and plastic. The shredded waste wood is primarily used as a substitute fuel in incineration plants and is obtained by an external company for fuel production. The prepared green waste is used for further processing in composting plants. All metal contaminants found are reliably removed with a built-in over band magnet with the clean biomaterial then screened. The generated commercial waste is shredded by the user to reduce its volume in order to save considerable transportation costs and subsequent landfilling in southern Israel.

On the site of Carmel Natural Products Ltd. there is also an in-house composting area and a collection point for green waste. Using a Titan 950 this is shredded directly on site. The material is then screened and processed to a final grain size of 0mm - 20mm, as required in the Israeli compost industry. Using the Titan 950, stones and metal parts missed during pre-sorting can be pre-shredded and sorted out. This way, there is less

jamming and therefore less damage to the subsequent screener. The shredder has an innovative SCU control system for adjusting the shaft speed and, with the help of the radio remote control and the standard track chassis, optimum mobility on site is assured.

There is a large scale waste collection point located in the south of the country where numerous types of waste come together. Unlike most European countries, a large part of the waste generated there is still dumped and buried. By using the Titan 950, however, the volume of household and commercial waste is reduced to such an extent that significantly more layers of waste can be deposited in the end, which means more money for the system operator. The strengths of the Titan 950 are particularly evident processing a diverse mix of materials. Thanks to the revolutionary quick change system of the shredding shafts, the twin shaft can be easily installed and removed within a very short period of time. This makes maintenance, preparation and changing of the different shaft types easier for almost an uninterrupted operation.





www.npke.eu

NPK®

The **NPK** trademark
has become a symbol for
quality products worldwide.

▶ ANTRAQUIP®

Experienced, Innovative & Reliable

HIGH PERFORMANCE, DELIVERED

ROCK CUTTING



CONCRETE REMOVAL





FOR MORE INFORMATION CALL +1 (301) 665-1165 or visit www.antraquip.net

 Follow us and Stay Updated
facebook.com/Antraquip

THE ULTIMATE DEMOLITION DEMOLITION ATTACHMENT

CONTROLLED DEMOLITION • REINFORCED CONCRETE CUTTING • MAKING THE AQ DEMOLITION SERIES THE ULTIMATE ATTACHMENT



Doosan launches new 'transparent bucket' wheel loader

Doosan Infracore Europe has launched what it says is the industry's first wheel loader 'transparent bucket' system. The transparent bucket is a system that allows the wheel loader driver to see blind spots in front of the bucket on the machine, using the monitor in the cab. The innovative system records images in front of the wheel loader with top and bottom front loaded cameras and shows combined images on the cab monitor in real time using a curved projection method.

Owing to blind spots caused by the buckets on wheel loaders, the area in front of the machines has been considered an area of major concern in terms of safety. With the new Doosan transparent bucket function, however, the driver can easily check the blind spots in front of the bucket via the cab monitor, to increase safety and prevent accidents. Another advantage of the transparent bucket system is that it can significantly improve work efficiency by providing a forward view perspective for the driver during loading/unloading or when carrying materials such as aggregates sand and soil.

Doosan Infracore states that it is the first company in the world to develop and apply a front projection function with the transparent bucket for construction machines and has applied for patents in Korea, North America, Europe and China. Doosan has also developed further sophisticated cutting edge safety systems for the company's machinery range, such as the around view monitor (AVM) system, that can observe the machines' surroundings, and a rear warning system using ultrasonic sensors, which have both received very favourable responses from customers.

Doosan Infracore states that as machinery and site safety standards continue to be significantly raised around the world, advanced safety systems have become a key factor in selecting equipment. The company plans to continue developing safety features that can protect drivers and other workers on site, aiming to be at the forefront in creating construction sites that are safer and accident free.



Diesel free with RM 120X hybrid

In September 2020, Taha Zahir from Kfar Quasem in Israel decided to expand its fleet with a second RM crusher, selecting a new RM 120X. The crusher unit processes C&D waste inside a closed hall with the aggregate produced used as road sub base. As processing takes place indoors, dust and noise emissions were key concerns for Taha Zahir.

In early 2018, Taha Zahir invested in his first 'RM 120GO!' being used to crush C&D waste to produce road sub base aggregate near Tel Aviv. Processing takes place inside an enclosed hall, making it essential that the exhaust, dust and noise emissions are as low as possible. As work increased, Taha Zahir became interested in a second low emission crusher, choosing a new RM 120X hybrid, which can be both diesel-electric and purely electrically powered. The feed material with an edge length of up to 800mm is now processed fully electrically to produce cuboid final aggregate (0mm-32mm). In order to keep dust levels during the crushing process as low as possible, Taha Zahir also ordered a dust suppression system that minimises dust formation using water mist generated by a water pump and spray bar.

In addition to the option of entirely diesel free crushing, the new Rubble Master development also delivers impressive user friendliness, both during operation and during maintenance. The proven 'RM GO!' principle - which stands for intuitive machine operation and more accessible machine components - has been further developed for the new 'Next' machines. Through the use of innovative machine communication lights, the user can now easily see the current status of the system. If the machine displays the green light, then everything is working perfectly; if the yellow light is on, the operator knows that a service is needed, and the red light indicates a warning.

Taha Zahir's employees are also pleased about the new developments in terms of safety. As the first crusher in the Next series, the RM 120X keeps the operator well outside the danger zone during the crushing process. The radio remote control has a display, 'RM GO! SMART' (optional), and the machine communication lighting, considerably increases the safety of the machine operator. All information relating to the crushing process is displayed in the RM GO! SMART App on a mobile device, smartphone or tablet.

Every day, approximately 1,000t of C&D waste - mixed with plastic, wood and textiles - are delivered to Kfar Quasem. To ensure clean, high quality final aggregate, Taha Zahir decided to install a wind sifter on both RM impact crushers. The C&D waste is now easily freed of unwanted light materials to produce a high quality final aggregate.



Kohler welcomes new China Tier 4 regulation

During a recent industry event, Chinese authorities issued an important update regarding China Tier 4 regulations which were welcomed by Kohler. "The new China Tier 4 emission standard for non-road mobile machinery sets highly demanding requirements on particulate matter emission. Kohler has already upgraded

the traditional engine fuel system, intake and exhaust systems and control system to provide OEMs with fully compliant engines," declared Li Shaoqi, director of commerce, Kohler Engines Asia Pacific. "The upgrade from China 3 to China 4 is much more challenging if compared to the previous from China 2 to China 3, but

Kohler, leveraging the experience gained in highly regulated markets, is able to offer enhanced performance."

Watch the video



simex.it

TF DOUBLE-DRUM CUTTER HEADS

highly effective where conventional excavation systems
are too weak and percussion ones have little effect



Simex TF cutter heads are **ideal for trenching, profiling rock and concrete walls, tunneling, quarrying, demolition, dredging and underwater works.**

Especially recommended for **finishing operations**, where high precision, minimum disturbance and optimum aesthetic result are required.

- | | |
|---------------------------|---|
| ✓ PRECISE CUT | ✓ DEEP AND NARROW TRENCHES |
| ✓ LOW VIBRATIONS | ✓ UNDERWATER WORKS |
| ✓ HIGH PERFORMANCE | ✓ MAINTENANCE-FREE |
| ✓ LOW NOISE LEVEL | ✓ MILLED MATERIAL REUSED ON SITE |



Next generation Panther T14R

In 2016 Prinroth launched its highly popular and productive crawler carrier, the Panther T14R. The company now aims to set a new standard by increasing the Panther's speed and power, while adding a host of impressive new features designed to boost uptime and operator performance.

The next generation model builds on the speed/payload combination of the Panther T14R. A boost in speed of up to 5%, coupled with the T14R's impressive payload, further increases productivity. "Everyone knows that bigger payloads and faster cycle times deliver more productivity and bigger profits, and at Prinroth, we're dedicated to helping our customers get more for their investment," said Patrick Hébert, product manager for the Panther. "That's why we worked hard as a team to provide not only exceptional payload, but also the best payload to weight ratio in the industry. With this next generation, we now offer a 15% advantage in this critical category over our closest competitor by carrying less dead weight."

The T14R's overall architecture was redesigned to offer improved visibility, making it safer for everyone on the jobsite, while increasing the operator confidence and, in turn, productivity. The new T14R also provides operators with enhanced comfort and intuitive features that make easy work during long shifts. For example, new warning systems on the in cab display allow operators to confidently take on challenging conditions. "We didn't just make the machine more efficient," said Alessandro Ferrari, Prinroth CEO. "The advancements found in this new generation of Panther make operators more efficient as well."

Prinroth engineers also installed a new engine and a drive direction reset using a Cat C7.1 double label EPA Tier 4 Final/EUROMOT Stage V engine, that helps provide low energy consumption and environmental protection in ecologically sensitive areas. Operator focused features include a single touch drive direction reset for effortless turnarounds and improved settings of the hydrostatic drive motor. "Our engineers achieved what few thought possible," said Ferrari. "They made the world's fastest crawler carrier even faster; the safest carrier even safer; the easiest even easier, and the cleanest even cleaner. In other words, the best is now even better."

Kobelco launches its largest short radius excavator

Kobelco Construction Machinery Europe B.V (KCME) is pleased to announce the launch of its largest short radius (SR) excavator into the 38t segment, the 36t SK380SRLC.

The addition of the new Kobelco SK380SRLC to its SR line up brings performance through a powerful 200kW engine, excellent lifting capacity, increased stability due to its operating weight, a spacious cabin and excellent operability. It features a Stage V compliant turbocharged Hino diesel engine and, should instant power be required, 'Power Boost' can be engaged for 10% more power. The machine's proven powertrain also delivers a drawbar force of 314kN for smooth and steady operation across rough terrain. In addition, the combination of high hydraulic pressure and balanced chassis layout delivers exceptional lifting capacity of 12,390kg (from ground level) even when digging at a reach of 6m.

Designed with much care and attention to detail, the SK380SRLC's spacious cabin incorporates a number of features to improve aesthetics, comfort and safety. The premium operator station is sealed and pressurised, using a powerful automatic climate control system. A Kobelco branded 'Grammer' air cushioned and heated suspension seat absorbs vibration even on the roughest terrain, with the SK380SRLC's cabin also being equipped with a DAB+ radio (FM/AM, AUX, USB), Bluetooth, hands free telephone and other features. In addition, the SK380SRLC's colour LCD multi display screen shows fuel consumption, maintenance intervals, digging mode and other important information such as ten pre-set attachment settings, and a mode switch that converts the hydraulic circuit and flow amount to match attachments.

For enhanced operator safety, an innovative tilt up opening FOPS guard level II comes as standard, providing easy access to the external roof glass, which can be easily cleaned for improved visibility. Additional jobsite safety is assured via three standard cameras located on the left, right and rear sides of the machine. Ground level access to the DEF tank and a special lower access step,



located near the engine, also simplifies maintenance. A two piece boom option is expected to launch later this year, which will provide additional benefits on jobsites with restricted space, particularly in maintenance and utilities.

Commenting on the launch of the Kobelco SK380SRLC, product manager, Peter Stuijt, said: "The arrival of the SK380SRLC is a result of extensive market research and customer feedback, coupled with Kobelco's extensive experience in innovative technologies. We're seeing more demand for short radius machines, due to increased requirements for urban infrastructure and utilities, and the SK380SRLC offers all the benefits of a heavy machine, including high power and increased lifting capacity, but in a much smaller working footprint."

Epiroc to acquire South Korean hydraulic breaker manufacturer

Epiroc has agreed to acquire DandA Heavy Industries, a South Korean manufacturer of hydraulic breakers.

DandA Heavy Industries, based in Seoul, South Korea, manufactures and sells hydraulic breakers for customers involved in construction, demolition, rock excavation, quarrying and infrastructure. The company, which has a production facility outside Seoul, has about 60 employees and had revenues in 2020 of about €21M. "The acquisition of DandA Heavy Industries will

strengthen our leading position on hydraulic attachment tools for the construction industry and supports our long term growth strategy," says Helena Hedblom, Epiroc's president and CEO. The acquisition is expected to be completed at the end of Q2 2021. The purchase price is not material relative to Epiroc's market capitalisation and is not disclosed. The business will become part of Epiroc's Tools & Attachments division and will keep its brand and channels, and continue to be based in South Korea.



Faster drilling
Higher power
Stronger performance

Drills faster even with low-end diamond segments. Shown to pay for itself in full in weeks.

- 10kW nominal output power
- 15kW peak output power
- unbeatable combination of RPM and torque
- inverter inside
- 1-phase and 3-phase power
- drills MUCH faster

LET THE BEST ONE WIN!

CUTTRONIX®
BY PROFESSIONALS. FOR PROFESSIONALS.

CUTTRONIX®
is the trademark of
 **KASKOD**
MTRONIX
www.cuttronix.com

"A customer can have a shot blaster
painted any color he wants,
as long as it's blue."

Loosely according to Henry Ford (1863 – 1947)



Streamer S320RD





SERVISA AND INDECO PARTNER TO

demolish the Berlin Deutsche Post headquarters in record time

In December 2020, the company Servisa completed demolition of the Deutsche Post headquarters in Berlin. The technical and logistical aspects of the project made it a tough challenge, given the site was located in the city centre.

The structure to be demolished had been built with high resistance concrete (with an unconfined compressive strength over 45MPa) and rebar reaching diameters of 50mm and 80mm in the areas of the foundation and plinths. The project was concluded successfully with the help of Indeco attachments, which made the difference in terms of productivity and scheduling. As well as an HP 5000 hydraulic hammer were a pair of multifunctional IMP 25 combi cutter jaws which could be easily transformed into a breaker, crusher or shears according to need.

An IRP 18 X pulveriser was used to carry out the primary crushing of over 3,000m³ of demolition waste. This attachment performed very efficiently thanks to its geometric design, which achieves the minimum variation in pulverising force between the start (maximum opening) and finish (minimum opening). This feature increases constancy and efficacy in the crushing action and thereby reduces working times and stresses transmitted to the excavator. It also delivered productivity due to its hydraulic system with a 'regeneration valve', which enables the movable jaw to be closed more quickly under no-load conditions, allowing all available force to be applied only when the material is being crushed. Another valuable asset was the IMG 2800 D multi grab jaws, which has high levels of manoeuvrability and a mounting bracket making it compatible with other Indeco products.

Ideal partner for Servisa

Servisa Group is the largest demolition and environmental services contractor in the Berlin-Brandenburg area. Despite its size, it has remained a family owned company since its foundation in 1971, and is one of Germany's major contractors in this sector. CEO Sascha Hellwig stated: "We started out as demolition contractors, but our activities now extend to earthmoving and transporting waste material to disposal facilities. We also hold a

license authorising us to perform all recycling activities, also for others. And over the last couple of years, we've entered the logistics sector, providing construction companies all services related to job site preparation."

Sascha then explained developments in the sector in which his company operates. "I think there's the real possibility that demolition contractors can become sub-contractors of recycling companies. This is because the problem of transporting waste to disposal sites has more and more strategic importance, and it's the reason why we've decided to consolidate in both directions. Here in Berlin, for example, one thing is to send a truckload of waste material to the disposal site, and quite another to haul away 800,000t, as we did last year. In the future, it won't just be trucks, but maybe even trains, barges and ships. Often we're dealing with structures from the 1970s or 80s that contain special waste, such as asbestos. For all these reasons, just having an excavator with a big hammer is no longer enough to call yourself a demolition contractor; the concept is much broader now."

"Presently, we have 23 excavators, 20 trucks, and 100 machines, including attachments. When we decided to purchase new demolition equipment, we looked around to see what the market offered and decided to try out Indeco. Another factor was that the Indeco and Servisa technicians already knew each other; that's not a minor consideration, as it's very important that our people have a good relationship with our equipment suppliers. And besides the intrinsic quality and productivity of the attachments, we really liked Indeco's whole approach because, I emphasise, there is an increasing demand to separate the waste material on site. I have to say that our experience with Indeco to now has been very positive from every standpoint."

Many job sites in Berlin

"We've got a lot of sites active. They are all large scale structures, residential and office buildings, and also

malls. For the most part they are situated in the city centre, in Alexander Platz for instance, where over the next few years six skyscrapers will be going up. Right in that part of the city, our job will entail demolition and job site preparation for later construction, which also includes removing the foundations and taking care of logistical aspects." Sascha then explains how big Servisa is at present: "We have about 150 (employees), but before Covid, we had intended to increase that number to 200. Fortunately, we have an excellent network in the Berlin area, and have been able recruit labour, especially from Eastern Germany and south eastern Europe. They are willing to work hard and also to take on the physical challenges of a demolition site. It's tougher to find staff to manage the work phases, because there's a lot of competition among the companies for hiring qualified technical personnel."

Training and developing staff has also proved vital. "Over and above the technical aspects, we want them (employees) to become part of Servisa Group in every way. We also need staff that can handle a variety of aspects and are willing to develop their professional skills. We like working with young people because they're so motivated. And it's important that, aside from fulfilling their assigned goals, they have a certain degree of freedom, and that they actively contribute to the job within a less rigid, more efficient organisation where they give the best of themselves individually and enhance the work of everyone else."

Sascha sees his relationship with Indeco developing: "If we want to grow in the sense I mentioned, we have to rely on one or two partners for machines and equipment who will flank us both as regards product and assistance. The business is changing, and we see that Indeco is orienting itself in that direction. I'm convinced that a partnership between Servisa and Indeco is a win for everybody."



**ROGER SIMONSSON, AQUAJET CEO,
EXPLAINS HOW ROBOTIC HYDRODEMOLITION HELPS**

simplify concrete repair

Acid rain, road salt and normal wear and tear wreak havoc on concrete over time.

Because new construction isn't always practical, contractors typically rely on processes to remove deteriorated concrete and create a suitable surface to which new concrete will easily adhere. However, traditional methods of removing old concrete require hours of manual labour using handheld water jetting equipment or handheld pneumatic tools. To reduce injuries and increase efficiency, contractors are increasingly turning to hydrodemolition to handle these concrete rehabilitation jobs.

Hydrodemolition uses powerful high pressure water jets manipulated by an automated robot to remove layers of deteriorated and damaged concrete. The high pressure water exceeds the strength of the concrete to widen existing pores and micro cracks, breaking it apart in a controlled manner. Amongst the many advantages of hydrodemolition include superior bonding, as alternative techniques, such as handheld breakers, tend to leave layers of dust and damaged concrete with small cracks extending as much as 25mm into the residual concrete. As a result, the profile could potentially spoil the bonding for new concrete.

Hydrodemolition, on the other hand, leaves a rough, irregular surface after removing the initial layer of concrete. This 'craggy' profile is proven to provide better bonding strength. Independent pull off tests have shown that the bonding strength from hydrodemolition robots is much higher than what is achieved with a jackhammer or mechanical method. The average failure stress while using robotic hydrodemolition can be more than 2MPa.

Extended structure lifespan.

Compared to jackhammers, hydrodemolition is an impact free process, eliminating the vibrations that cause micro fractures, the miniscule cracks in sound concrete that significantly damage the structure's integrity. Handheld pneumatic tools and milling machines also leave rebar damaged and susceptible to rusting. Although hydrodemo-

lition's high powered water jets are devastating to concrete, they do not damage steel rebar. As a natural result of the high pressure water, rust and scale is removed, leaving the steel clean and intact, even directly underneath, with the method virtually eliminating 'shadowing' as well. This combination of benefits results in repairs that last up to three times longer. The Swedish Cement and Concrete Research Institute (CBI) determined a repair life expectancy of 21 to 35 years with hydrodemolition robots compared to 7 to 12 years using mechanical chiselling.

Increased productivity.

A hydrodemolition robot's high pressure water jet removes concrete by widening existing pores and micro cracks in the weakened structure. This process is more efficient than mechanical methods, allowing the user to complete jobs more quickly, being up to 25 times faster than with hand lances. One operator generally controls the machine and can complete concrete removal tasks as fast as or faster than multiple workers. For example, some hydrodemolition robots can remove as much as 74.3m² of concrete bridge deck at a depth of 100mm/h; a fraction of the time it would take a crew with handheld breakers.



Additionally, hydrodemolition robots' compact nature allows them to reach tight, confined spaces. Various design features and additional attachments also allow for work on any vertical, curved or horizontal surface. This greatly increases productivity and reduces the number of tools needed on a jobsite.

Fewer and safer people

Hydrodemolition units require less labour and cause fewer injuries than other methods, such as chipping hammers and handheld water jetting equipment. Hydrodemolition robots allow operators to monitor their work at a safe distance from hazards such as ledges common in bridgework, flying debris and harmful silica dust. In addition, by eliminating the need to stand near a ledge, contractors save time otherwise spent setting up fall abatement systems. The combination of high pressure, water volume and precise, robotic controlled movements creates a powerful, efficient system that allows operators to take a hands off approach. This eliminates fatigue and long term injuries, such as nerve damage and hand arm vibration syndrome, often common with handheld equipment. These injuries can result in more worker compensation claims down the line, and may cause company insurance premiums to increase.

Finally, hydrodemolition offers a quieter solution for urban environments as the robots generally produce less noise than a handheld pneumatic tool and the sound is limited by the machine's hood. The quieter operation allows contractors to work in residential areas or avoid busy travel times by working during hours when noise levels are restricted. These factors all mean that hydrodemolition continues to grow in popularity with contractors, project stakeholders and government agencies around the globe. The machines' ability to tackle projects in record time while improving safety is appealing to those looking for ways to speed up concrete removal while increasing ROI.



- **More power:** 3.5 t load capacity at 19 m working height over 360°
- **More safety and better vision:** Elevatable and tiltable cab

**STAGE V
ENGINE**

830E

DEMOLITION REDEFINED

- **Extreme stability:** Wide-track telescopic undercarriage
- **Maximum flexibility:** Robust 2-part equipment can handle any attachment



Telehandler
5,5 t

Balancer
130-300 t

Material Handling
17-400 t

Duty Cycle Crane
13,5-300 t

Crawler Crane
50-300 t

Telescopic Crane
16-130 t

Mobile Harbour Crane
300 t

Alfred Endl

SENNEBOGEN
Maschinenfabrik GmbH
94315 Straubing, Germany
alfred.endl@sennebogen.de

SENNEBOGEN



WORLD OF CONCRETE TO BE THE FIRST LARGE

show to return to Las Vegas

World of Concrete (WOC) will be the first large show to be held at the partly renovated Las Vegas Convention Center, 8-10 June, 2021. It will also be one of very few shows to take place globally during the first half of 2021.



World of Concrete is the first show out during the first six months of 2021, although it is believed that quite a number of shows will be organised during the autumn. However, we are currently in the borderland between a raging pandemic and a massive vaccination programme which hopefully will result in a declining infection spread and lifted restrictions. It is uncertain how the current situation will affect the attendance of potential exhibitors and visitors of the Las Vegas show from outside the United States.

Approved by the

US Department of Business and Industry

WOC has been approved to go ahead by the US Department of Business and Industry, and will be the first large scale trade show to be held in the US since the pandemic brought in-person meetings to a halt.

The State of Nevada's new directive requires meetings, trade show and entertainment venues to certify through the state's Department of Business and Industry that they will follow Nevada's health and safety requirements and protocols. This will see adherence to the prevention principles that have remained consistent, namely maintaining safe social distancing, wearing

face coverings and practicing good hygiene and cleaning measures.

"Las Vegas has been the top convention and meetings destination for many years. We pride ourselves on providing the best facilities, the best service and now, the safest," said Nevada Governor Steve Sisolak. "We've

been cautious, but very focused on reopening Las Vegas in the safest way possible for you, our treasured customers, our valued employees and our entire community." These thoughts were supported by Steve Hill, president and CEO of the Las Vegas Convention Center: "We are thrilled to be welcoming World of Concrete exhibitors





NO COMPETITION IN DEMOLITION



ARJES

Recycling Innovation

TITAN 950

The mobile Heavy-Duty Class

Concrete railway sleepers with reinforcing steel are a tough nut to crack when processing mineral waste. The TITAN 950 easily crushes the concrete elements and separates the steel content via the standard longitudinal magnet. The result is a high-quality end product with optimum grain size.

Countless applications can also be found in the shredding of mixed scrap, car bodies, tyres, household and commercial waste, as well as in composting and wood processing plants.

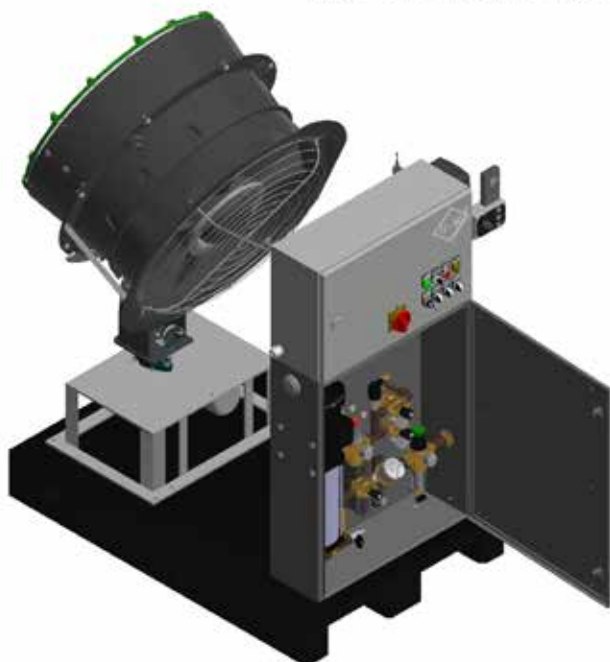
We will accept your challenge!

www.arjes.de

www.pdworld.com

NALTEC®

Odour and Dust Control Solutions - Both Mobile and Stationary
for a Wide Variety of Applications



B+W Gesellschaft für Innovative Produkte mbH

Boschstraße 12a • D-46244 Bottrop

Phone: +49 (0) 20 45 / 4 12 12-0 • Fax: +49 (0) 20 45 / 4 12 12-29

E-Mail: info@buwip.de • Internet: www.buwip.de



and attendees back to Las Vegas as our first major convention to return to our destination.”

Still not the same this year

There is little doubt that this year's edition of World of Concrete will be different from a regular show. The vaccination process is well ahead in most parts of the world but the pandemic is still harvesting many lives. Restrictions are very slowly being lifted though, and in Sweden for instance, when this article was written, a maximum of eight people can meet in a group, with the current restrictions set to stay in place at least until mid-June.

There are no trade shows planned to take place in Europe before end of August, and unfortunately it is believed that very few people from outside the US will attend WOC this year. Foreign manufacturers with representation in the US will send their US staff to the show, whilst the manufacturers with no representation will in all probability choose to forego attending the show, with the number of registered exhibitors testifying to this unfortunate state of affairs. To date, 599 companies have registered to exhibit at World of Concrete 2021, whereas in 2019, a record year saw 1,500 exhibitors. In 2020, when the pandemic just started in Asia, the

number dropped to 927. But still the decision by the organisers to go ahead with the show has great value for the industry, as business must carry on, albeit in different and changed ways.

Thanks to the mass vaccination programmes across the world, we are beginning to see a change for the better, with new ways being found to reopen the global market. WOC is a good example of these endeavours, even if at this time it will be a very much US focused event and less global than usual, with mostly exhibitors and visitors from the US. PDi Magazine is exhibiting as usual, but this time with staff only from the US office.

However, the concern remains that this pandemic will behave differently from other pandemics. We don't know for certain if the vaccines will protect us from the growing numbers of mutations. Only when the global vaccination programme is completed and time will tell. It is possible that the vaccine will reduce the number of fatalities but still many people will become ill. This possibility may result in people continue to socially distance, wear face masks, and constantly disinfect themselves for a long time to come, with a corresponding effect on business life.

www.worldofconcrete.com

A selected list of exhibiting companies at World of Concrete 2021

EXHIBITORS	BOOTH NUMBER
Advanced Equipment Inc	W952
American Shotcrete Association	N2405
Antraquip Corporation	N2644
Merlo (AMS)	W941
Astec	N837
AUSA Corporation	W1119
Aquajet Systems	W703
Avant Tecno USA	W713
Bay-Lynx Manufacturing Inc.	W2053
BHS-Sonthofen	N648
BlastPro Manufacturing, Inc.	N2151
BlastPro Manufacturing, Inc.	N2413
Vanguard	D1242
Britespan Building Systems	N545
Brokk Inc	W703
Canycom USA, Inc	W3303
CASE Construction Equipment	W3103
Concrete Sawing & Drilling Association	W649
Conjet AB	W641
CS Unitec Inc	W1009
Cutco	N645, W2264
Diamond Blade Warehouse	N2655
Diamond Outfitters	N2643
Diamond Products	D1402
Diamond Products	D1702
Diamond Products	W741
Digga North America, LLC	W3115
Digga North America, LLC	W3333
DITEQ Corporation	D1610
Doosan	W1302
Dustcontrol USA	N1063
Eagle Industries of LA, LLC	N2805
E-Z Drill Inc	W2565
E-Z UP	W2753
Fogco	N2077
Diamond Vantage, Inc.	N3052
Gensco Equipment	N2929
GSSI	W753
Hatz Diesel	N2512
Haver & Boecker USA, Inc.	N653
Hilti, Inc.	D1202
Hilti, Inc.	W3121
Husqvarna Construction Products	D1224
IMER USA Inc	N913
Inland Diamond Products	N2941
International Grooving & Grinding Assn (IGGA)	W2624
Jetstream of Houston	W511
Jon-Don Inc.	D1235
LISSMAC Corporation	D1210
Makinex USA LLC	N2837
Advanced Floor Products	N719
National Flooring Equipment	D2107
New Grind Inc	D941
Pearl Abrasive	N1813
PR Diamond Products, Inc.	D1718
Quick Attach Attachments LLC	W2931
Runyon Surface Prep Rental	N3151
PDi Magazine PDa Magazine	W2917
Concrete Products	N448
Solo Incorporated	N2177
Stanley Black & Decker	W1131
STIHL Inc.	W2709
Sunward America	W1720
Superabrasive, Inc.	N2305
Sysdyne Technologies, LLC	N1863
Terex	WES01
Terrazzo & Marble Supply Companies	N1956
Terrco, Inc.	N2947
Trojan Tracks USA Inc	W3018
US Saws	N963
Vacuworx	W1608
World Diamond Source Inc	N921
Xtreme Engineered Floor Systems, Inc.	N2877

FR200 GENUS!

Let us introduce new FR200 Genus. Genus is Latin for friendly and that's what FR200 Genus is. It has the same quality and performance as for past 60 years but now also with substantially lower vibration level.

FR200 Genus vibration level is only 3,6 m/s²!



In addition, FR200 Genus has a new dust port design with dramatically increased dust pick-up capabilities.

That is what we call friendly. Operator friendly – a GENUS!



Call our distributor for more info, demonstrations, and trade in offers for old units. You find them at www.vonarx.com **distributor page**.



BDB 8295

– Dry Coring until
ø300mm (diameter 12")

Baier produces high quality power tools since over 80 years. Located in Stuttgart, Germany, Baier exports in over 60 countries, is a worldwide leader in quality and innovation, a solution bringer to the professional.

"Baier is the world leading manufacturer for dry coring solutions. Next to the BDB825 with a maximum diameter of 160mm, the BDB829 with a maximum diameter of ø250mm, we offer the new BDB8295", says Baier general manager Thomas Schwab. BDB8295 is a purely drill stand guided dry coring machine with a high torque and optimal rpm. "After endless successful tests, we can now really claim that this is a solution that will revolutionize the market. I am looking forward to the next bauma. We are going to rock it. The BDB 8295 has an enormous torque. Our engineers have succeeded in a true piece of hussars in the field of power transmission," adds Schwab. The maximum range is up to 300mm+ (12"+) in dry drilling. Titanium II is the optimal combination for this solution for leaders. New target groups now have opportunities that have been previously denied.

Professionals have tested the BDB 8295 for the final release which included more than 500 holes per machine. The broad test range was executed in different kind of stones, like nuclear power plants. The longest core hole was 1,8m (6 feet) of length with a cutting time of 45 minutes in the hardest stone.

www.baier-tools.com



Cordless dry coring up to ø102mm from Otto Baier

Located in Stuttgart, Germany, Baier has produced high quality power tools for over 80 years, and is a leading manufacturer, focusing on quality and innovation, now exporting to over 60 countries, aiming to bring solutions to the professionals.

Baier, is part of the Cordless Alliance System (CAS) which comprises of 24 different companies (which was formed by Metabo). It has now produced for the first time a socket sinker to be used in other countries for dry coring up to ø102mm. The company also offers dry coring solutions from ø20mm up to ø300mm. The reason for the development is that CAS's battery system is a proven concept, standing for quality, which is essential for Baier. In addition, the level of technology is continually updated.

By adopting the CAS system, Baier has been able to concentrate on its core competency of dry drilling, with the resulting ABDB82 being a competitive solution for professional use. The company is now in the process of developing further solutions in the field of cordless machines, always as part of the CAS network. Baier is also proud of its ecologically sustainable credentials, and the fact that different suppliers access the same battery base, means that the customer may use fewer battery packs while using a variety of machines from different manufacturers.

Although the recent development is a stand-alone product, with Baier's identity intact, the association with CAS means that as part of a community the company is even stronger, actively building on evolving networks.



Flush cutting walls and roadside kerbs with the Lissmac 'Compactcut' 900 P/T

Time is money, and the Compactcut 900 P/T aims to optimise working efficiency as the dry cutting process saves on extraction and the cost intensive disposal of cutting slurries. Using a highly efficient dust extraction system, the new model produces ready to cast joints, whilst the cleverly designed flush cutting blade guard is an additional advantage in cutting flush with walls and kerbs.

The Compactcut 900 P/T is specially designed for producing joints in the dry cutting process, with ready to cast joints, with a depth of up to 125mm being cut in one step, making it ideal for time critical applications. It has proven itself in renovation work producing connection joints and expansion joints, and on construction sites where space is at a premium, with the operator being able to easily manoeuvre the machine with the integrated steering wheel.

Vertical cutting

A 'flush cut' blade guard allows true vertical cutting, as described in the ZTV Fug standard. This is made possible by the specially designed suction blade guard, which is a key component of the integrated 'Vacuum-Dry' 100 dry extraction system. This system is designed for dust free dry cutting which not only saves time, but also enhances the occupational health and safety of the operator as well as the entire team on the construction site. A clearly

organised control panel and height adjustable handles are user friendly, with the robust hydrostat being activated with a sensitive drive lever that ensures uniform feed rates and easy machine guidance. The machine comes with an ergonomically positioned steering wheel which enables precise cutting as well as fast transfer manoeuvres and set up.

Extra tough

The torsion resistant sheet steel frame construction of the Compactcut 900 P/T is designed for many years of daily operation. In addition to 'unshakeable' robustness, practical usage was another major priority when it came to the design of the machine. Through precise motor placement, Lissmac design engineers have produced an easy to access to air and fuel filter, battery and oil, which facilitates daily inspection and maintenance tasks. All components are arranged to ensure a very low centre of gravity thus providing very precise cutting. The Vanguard two cylinder gasoline motor provides 26kW and accelerates dry cutting blades up to 400mm in diameter to 2,130rpm. This rotational speed ensures optimal sawing progress. Seven high performance V-belts reliably transfer the motor power to the saw blade, with the setting of cutting depth being electro-hydraulic. The Compactcut 900 P/T is factory equipped with a parking brake and a neutral gear for running idle.

ROAD TO ECOMONDO 2021

MARCH

APRIL

MAY

JUNE

SEPTEMBER

DIGITAL GREEN WEEKS

Leading
the ecological
transition.

ECOMONDO

26-29 OCTOBER 2021

RIMINI EXPO CENTRE - ITALY

organized by
**ITALIAN
EXHIBITION
GROUP**
Providing the future

in collaboration with



simultaneously with

KEY ENERGY
THE RENEWABLE ENERGY EXPO



ecomondo.com

For info and request for complimentary tickets please contact: helpdesk@iegexpo.it



HILTI ELEVATING SUSTAINABILITY TO THE NEXT LEVEL

The Hilti Group is amplifying its sustainability efforts and formulating a global strategy based on the pillars of environment, people and society. The company's new sustainability report provides transparency on the targets established and progress made.

In view of the increasing challenges posed by climate change, and to meet its social responsibilities, the Hilti Group has tightened up the targets initially established in its sustainability strategy and launched a number of global and local initiatives. The programme is based on a holistic understanding of sustainability that incorporates the strategic action fields of 'environment, people and society'. Organisationally, the strategy is anchored by the Hilti Group Executive Board. A sustainability team, which reports directly to the CEO, manages the global initiatives and presents progress and further optimisation potential in the annual sustainability report.

"We are convinced that long term success is only secured through business decisions that value environmental, people and social aspects equally with economic factors," said Christoph Loos, CEO of the Hilti Group. "We are aware that this is a journey with several stations still ahead of us. But we have set ourselves ambitious goals, are committed to the principles of the UN Global Compact and will leave no stone unturned. At the same time, we also want to support our customers in the construction industry in becoming more sustainable."

CO2 neutrality planned for 2023

In the 'environment' field of action, the company is bringing forward its target of CO2 neutrality in its own value chain, originally set for 2030, to 2023. The transition of the energy supply at all Hilti sites worldwide to electricity from renewable sources was already completed at the end of 2020. This will lead to CO2

savings of more than 20%, or 40,000t per year. A start has been made with the successive conversion of the worldwide vehicle fleet, of around 14,000 vehicles, to more environmentally friendly drive systems, which is expected to result in a substantial contribution to reducing the CO2 footprint.

The principle of a circular economy - decoupling resource consumption from economic growth - is the second central pillar of the construction technology group's environmental goals. Hilti states that it is the first company worldwide to apply a newly developed method that allows the measurement of the expansion of the circular economy at various levels. Among other actions, planned optimisation steps include the further development of the fleet management business model for electric tools, which operates according to the 'product as a service' principle. There will also be a focus on increasing the proportion of recycled material used in Hilti products and packaging.

Growing importance of health and safety

With its focus on 'people', the Hilti group is addressing, among other topics, the health and safety of construction site workers. The aim is to reduce the long term health effects triggered by heavy physical strain. The two solutions launched by Hilti in 2020 include the BIM enabled construction site robot, 'Jaibor', and the EXO-O1 exoskeleton, which are examples of the new human augmentation systems product line. These products focus on supporting and relieving the strain on workers and tradesmen during particularly demanding physical work.

Social engagement

In order to make a more significant contribution to solving the world's social problems, the Hilti Group and the Hilti Foundation will dovetail their activities even more closely in the future. The social projects driven by the Foundation, with a particular focus on developing countries, will be supplemented by the initiatives of Hilti team members in their own countries. To this end, the global volunteer programme, 'Engaged beyond business,' has been created, which empowers Hilti employees to invest time and money into local social projects.

The all new Dehaco DTS220 floor stripper

Dehaco's new DTS floor stripper is said to be stronger, more powerful and highly manoeuvrable than previous models. The company states that it pulled out all the stops developing its latest model with the development process having no less than three prototypes in order to create the optimal machine, the brand new DTS220.

The development goal was to create a machine with the existing features of the DTS170, but more powerful and more manoeuvrable. The result of months of development is a machine that performs optimally in renovation and demolition work, being a lot heavier than the other

models in the DTS series, which provides better performance in the aforementioned applications. In addition, work has also been done on improving ease of operation with the ballast weights being able to be dismantled more quickly. However, the company states that what really sets this stripper apart from other models is its high levels of manoeuvrability, as each wheel is driven separately. This ensures that the machine can even turn around on its own axis making it ideal for use in compact spaces.

The first example was delivered in company colours to a customer that has been closely involved in the prod-



uct development, namely Aannemingsbedrijf Zuidhoek from Voorhout (Netherlands).



» 2017 CAT 349FL UHD »

Zero hours on a J.J. Scheckel Custom, Ultra High Reach Demolition Conversion. 96'6" Total reach, Quick attach boom and lines, Hydraulic tilt cab, Extra counterweight, Highest quality package. Optional Cat MP324 multi processor tool and jaw sets at additional price if needed. The stock boom, stick, and bucket are also available if needed at additional price. **\$458,000**

call: 563-872-4112 | email: sales@jjscheckel.com | www.jjscheckel.com



OKADA

www.okada-aiyon.com

4-1-18, Kagan-dori, Minato-ku, Osaka 552-0022, Japan Tel: +81-(0)6-6576-1266 Fax: +81-(0)6-6576-1516 Email: sales@okada-aiyon.com

PRODUCTIVE POWERFUL RELIABLE



Your Reliable Demolition Partner.

From 28.5 to 60.5 tons operating weight, Doosan offer a range of 3 Dual-rig demolition machines where standard digging can be quick-changed to high-reach. Compact transport dimensions are facilitated by hydraulically adjustable undercarriages. Built for durability and flexibility, these demolition rigs will tear down the toughest structures. Fully equipped with a tilting cab, FOGS guard, providing exceptional operator comfort, control and safety and also backed by excellent service support.

For more information visit: eu.doosanequipment.com

Powered by **Innovation**

DOOSAN



EvoQuip launches revamped 'Bison 120'

The revamped Bison 120 jaw crusher now offers enhancements made with the aim of making it easy to operate, maintain and transport. These include a Deutz 2.2 L3 Stage V engine, larger crusher drive motor and adjustable belt tensioner.

The Bison 120 has been a core product in the EvoQuip portfolio since its inception in 2016. The revamped model now has the addition of a 'Programmable Logic Controller' with a push button control panel as standard, along with a remote control to enable the operator to adjust the jaw's closed side setting and to start or stop from the cab. EvoQuip product manager Gaby Stewart said: "The Bison 120 has proved to be a very popular EvoQuip machine with customers throughout the world, due to ease of transport, simplicity of use, and being ideal for single operator use as well as providing the ability to quickly convert waste into profit."

The revamped Bison 120 has undergone testing at various sites over the past six months, including at Watertop Farm in Ballycastle in Northern Ireland, UK, where the jaw crusher demolished an old farmyard barn originally built in the 1960s. The owner, Patsy McBride, decided to demolish the barn after discovering that he could recycle the material. According to EvoQuip, he was delighted to save costs from being able to process and utilise the demolished material, and to do his bit for the environment by reusing it rather than using virgin material. "Due to the Bison's performance we have material we can use rather than waste, taking the useless material to fill in some holes in the road around the farm," said McBride. "It has been an ideal fill material for sub base on our lanes, creating new tracks for sheep, maintaining ground around gates and for infilling around our new build. It is a great bit of kit; we could keep it busy all year."

The Bison 120 has been specifically designed for operators for whom versatility, manoeuvrability and transportability are of key importance. The Bison 120 is small enough to fit inside a container for transport, but strong enough to withstand tough applications. The Bison 120 features a 680mm x 400mm single toggle jaw crusher which is driven hydraulically, allowing the customer the ability to reverse the crusher to clear a blockage, as well as being able to run in reverse permanently for sticky applications such as asphalt.

New mobile app for 'DoosanCONNECT'

Doosan has launched a new mobile app for Apple and Android devices for its successful DoosanCONNECT TMS2.0 fleet and asset management system. As well as the standard functionality offered by the system, the mobile app offers new functions such as directions to machines and call service, whereby the app connects the customer directly with the Doosan dealer's service operation, and a 'chat' option to send messages to the service provider. The next generation TMS3.0 system will be available for new Doosan '7' machines later this year.

The DoosanCONNECT system is designed to increase efficiency in site management and equipment operation through the real time data monitoring of engine and hydraulic system parts of Doosan machines and other construction equipment. It provides information, mapping and visuals on their location and availability. Doosan customers receive a monthly report on equipment operations to ensure efficient equipment deployment with detailed information on service hours, fuel consumption and timely responses to filter and oil replacement.

Doosan to expand scope of system

Doosan plans to further expand the types of equipment covered by DoosanCONNECT and develop various services based on the telematics system to manage consumables and provide enhanced maintenance packages. The system provides comprehensive information about machine performance in a dual mode (satellite, mobile network). As such, it is said by Doosan to be the only tool of its type capable of providing this level of information, delivering insightful and cost saving data. It further allows fleet managers to compile a number of reports, including fleet status, machine details, location, operating hours and engine idle time via a work time etc. According to Doosan, the telematics system provides significant benefits for customers through the use of operational data that help improve efficiency, such as altering machine idle times based on fuel usage, machine security and safety.

The system can support multiple Doosan machines in different locations, helping customers to monitor machine utilisation rates to assess whether the right mix

of machines is being used. It can also guide drivers to help them to operate equipment with higher efficiency and to locate replacement machines in the event of maintenance work or breakdowns. This also includes vigorous anti-theft and theft recovery protection systems, enabling customers to monitor the physical location of their Doosan machines, ensuring they are where they are supposed to be.

Operational data also gives owners insight into monitoring the machine's fuel efficiency and the selected power mode in different applications. This is helpful when determining if an operator can make adjustments in order to do the same work with less diesel fuel. Doosan machines provide operators with various power modes to help them best match the power needed for specific applications.

If a problem does arise, the DoosanCONNECT system alerts owners to help reduce machine downtime. The website reports fault and warning codes, and owners or their dealers, are thus better prepared to fix the problem when they respond having more data about what is wrong with the machine. Doosan dealers can view the problem on the DoosanCONNECT website to help diagnose an issue, without physically being in the same location as the machine. With all of the information available from the DoosanCONNECT system, business owners can make better estimates when completing job bids and planning for jobs. Accurate machine usage reports, such as the number of hours a machine was used for a particular job, thereby help owners respond to new business opportunities.

Doosan telematics launched in 2005

Doosan launched its first telematics service in China in 2005, and as part of its efforts to further expand its market share in developed markets, the company is placing particular emphasis on expanding the application of its cutting edge technologies. This will be based on the DoosanCONNECT system and world class information and communications technologies (ICT), developing new products customised to local needs, and continuously upgrading its customer service.



www.demcon.se

DEMCON 2021

September 9-10, 2021

InfraCity, Stockholm

The Swedish Demolition
Awards Ceremony

 **Det Svenska
Demoleringspriset**

Exclusive Premium Diamond Sponsor



Exclusive Ruby Sponsor

Pentrunder®
CONCRETE CUTTING SYSTEMS

Exclusive Platinum Sponsor

 **Husqvarna**

Gold Sponsor



STEELWRIST
EARTHMOVING EFFICIENCY

Silver Sponsors



Midhage
DIAMOND TOOLS

DROME
DIAMOND TOOLS

Supported by:



Official Show Magazines



Organizer:





Husqvarna®

**ONE MISSION.
ONE PARTNER.
A WHOLE NEW WORLD
OF OPTIONS.**

WELCOME TO THE ORANGE EVOLUTION

Join us in celebrating the broadest range in floor grinding yet!
From now on HTC products and solutions are available under the Husqvarna brand. The core remains the same: state-of-the-art grinding machines, dust extractors, diamond tools, chemicals and floor solutions. Discover a whole new world of options at www.husqvarnacp.com

husqvarnacp.com

Copyright © 2021 Husqvarna AB (publ). All rights reserved. Husqvarna and other product and feature marks are trademarks of the Husqvarna Group or its licensors.
We reserve the right to make changes in technology and specifications without prior notice.