



Special Feature

GIVE 'EM A HAND!

pages: 14-19

Site Report

MOBYDICK HELPS

Contain Contamination
page: 50

Site Report

A Capital

BLAST

page: 53

Special Feature

Do You Know

THE DRILL?

pages: 63-66

News

Avant Tecno to Launch

MULTI-FUNCTIONAL LOADERS AT CONEXPO

page: 30

Shows

WORLD OF CONCRETE

Kicks Up the Dust

pages: 36-40

News

New Products from

SUPERABRASIVE

page: 43

Reports

SCRAP'AIR

PACKS A PUNCH

pages: 68-70

News

Full Electric Processing with

KEESTRACK

page: 76

Site Report

KERN-DEUDIAM

Successful in the
Market for 40 Years

page: 50



CONSTANT WATER SUPPLY AND A CLEAN JOBSITE

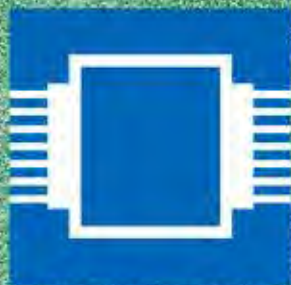
**Hilti DD-WMS 100
water management
system**



One full day of water autonomy and a clean jobsite during diamond coring applications. Greater productivity as slurry is collected and water is recycled up to seven times. Easily disposable filter bags. Compatible with all Hilti diamond drilling machines.

Find out more: www.hilti.group
Hilti Corporation | 9494 Schaan | Liechtenstein





ONLY WIRE

SINCE 1990

WIDECUT

18:19



BEYOND EXPECTATION - BRAZED WIRE



OFFSHORE PIPE CUT



VARIETY OF METAL CUT

- **Top Quality Assembly**
Reliable tool
- **Sharp Diamond Protrusion**
Extremely fast cut
- **Multi Diamond Layers**
Stable and long life

www.widecut.com



Professional Demolition International Magazine

Address: P.O. Box 786,
SE-191 27 Sollentuna, SWEDEN

Visitors address:
Sjöängsvägen 7, SE-192 72 Sollentuna, SWEDEN

Phone: +46 8 631 90 70
Telefax: +46 8 585 700 47
E-mail: info@pdworld.com
Website: www.pdworld.com
ISSN Registration: ISSN 1650-979X

EDITORIAL STAFF

Editor-in-Chief

Jan Hermansson, Jan.Hermansson@pdworld.com

Assisting Editor-in-Chief

Anita do Rocio Hermansson,
Anita.Hermansson@pdworld.com

Editor Europe: Mikael Karlsson,
mikael.karlsson@pdworld.com

Editor North & Central America

Jim Parsons, jim.parsons@pdworld.com

Editor South America

Luiz Carlos Beraldo,
luizcarlosberaldo@gmail.com

Editor Recycling: David Ehrenstråle,
david@flaskborsten.se

Editor Asia Pacific: Barbara Grace,
barbara@cmma.org.au

Editor Russia & Eastern Europe

Andrei Bushmarin,
andrei.bushmarin@pdworld.com

Editor Africa

Kevin Mayhew,
kevinm@addixion.co.za

SALES OFFICES

International Sales Director

Germany/Austria/Switzerland/Liechtenstein
/Benelux/Finland/France/Spain/Portugal and Italy
Andrei Bushmarin
Phone: +7 921 949 27 81
E-mail: andrei.bushmarin@pdworld.com

Sweden, Norway & Denmark

Contact the Editorial Office
Phone: +46 (0)8 631 90 70, Fax: +46 (0)8 585 700 47
E-mail: info@pdworld.com

North & South America, UK & Ireland

Darren Dunay
Dunay Associates
P.O. Box 119, Westwood, NJ 07675, USA
Phone: +1 201 781 6133, Fax: +1 201 664 1829
E-Mail: darren.dunay@pdworld.com

Australia/New Zealand/Asia Pacific/Korea/Japan and rest of the world:

Contact PDI editorial office in Sweden.

Publisher

Jan Hermansson

The magazine PDI, Professional Demolition International is published five times per year with a worldwide circulation of 10000 copies. The annual airmail subscription rate is US\$ 45. All subscription correspondence should be directed to: The subscription department, SCOP AB, P.O. Box 786, SE-191 27 Sollentuna, Sweden. PDI is mailed by second class postage. ©Copyright SCOP AB 2000-2014

Cover photo: US Demolition Association's Executive Director Michael R. Taylor at the EDA Convention in Madrid in June, 2014. © EDA.

PDI Magazine is a member of the following associations:



CONTENTS

PD*i* • issue no. 1 January - February 2017 • Volume 17

REGULARS

Editorials

6 2017, an unbalanced exhibition year

Busy year ahead!

8 A Global Perspective

Business

8 Volvo wins innovation award

Atlas Copco to acquire Erkat
Spezialmaschinen und Service

10 Blastrac' supports Folds of Honor

Dynaset launches new website

Caterpillar to move global headquarters
to Chicago area

Atlas Copco propose to split the Group

Conjet appoints new chief executive and chairman

Mecalac acquires Fermec and Benford

12 Case achieves world class
manufacturing certification

Husqvarna adds dust and slurry
management equipment

Jobsite Report

50 MobyDick helps contain contamination

53 A capital blast

54 D-Drill assists in X-ray installation

Hitachi ZX300LCN-6 takes SIRO to new heights

Sandvik roves screening efficiency

60 Hitachi ZX19-5's reliability for Polish contractor

Sandvik's new superior tooth jaw plates add value

News

43 New products from Superabrasive

44 Atlas Copco expands bucket crusher range

News from Vipermetal

Brokk updares 120 Diesel Mark 2 robot

46 E-Z Drill launches hand drill dust collection cart

Deutz to supply Putzmeister with Stage V engines

Merit's new saw

dsb innocrush: giant output is guaranteed

Chicago Pneumatic expands generator range

48 New mini excavators from Case

GSSI offers LineTrac

Blastrac's new shot blaster

58 Kobeleco's new arrival

Best practice for maintaining petrol-powered
drills and breakers

Scanmaskin launches Luteus

74 Schwaborn's adds remotely controlled grinder

Rockster Demo in China

New line of drill segments

New CombiCutter CC 7000



75 Chicago Pneumatic launches new light towers

Case adds Tier 4 Final T Series backhoe
loaders and new styling

76 Full electric processing with KeeTrack

Komatsu Europe launches wheeled loaders

Klindex Expander 530 propane

Reports

68-70 Scrap'Air packs a punch

82 Kern-Deudiam successful in the market
for 40 years

Shows

20-34 Great expectations for Conexpo

36-40 World of Concrete kicks up the dust

73 German concrete cutting show

Bauma Conexpo India underlines a turnaround

DDR Expo 2017

New opportunities against the
odds at Bauma China

Associations

84 Demolition conference in Berlin 2017

86 IACDS convention in Vienna

European Demolition Industry Report published

CSDA's 2017 Calendar

IACDS Convention 2017, preliminary programme

Special Features

14-19 Give 'em a hand!

63-66 Do you know the drill?

78 - 79 An Easy Connection



FRD
FURUKAWA

WHERE EXPERIENCE COUNTS

2017, an unbalanced exhibition year

Dear Reader

A new year and new initiatives. Here we are again, just a few weeks into the new year and not a lot of change. Donald Trump is America's new president and some of his remarks are unbelievable. The stock market did not go haywire, as many predicted, on the contrary it rose.

But ignoring politics, the year started with a few interesting acquisitions. The number of players tend to become fewer and bigger. First Atlas Copco acquired Erkat, a German manufacturer of rotating milling heads. At about the same time the company also said that it was planning to split the group into two companies. Second Husqvarna Construction Products acquired the Swedish manufacturer of industrial dust extraction and air cleaning equipment Pullman Ermator. Pullman Ermator is a strong player worldwide and during the last eight years built up a strong foothold in the US market with head office and assembly in Tampa, Florida.

The Pullman Ermator product lines have been integrated in the Husqvarna product range and the branded products were displayed at the recent World of Concrete exhibition. However, it has been decided that the Pullman Ermator brand will continue as well for an undetermined time in the future, probably a wise decision as their products have a very strong name in the global market. But the question whether Pullman Ermator's production facilities will remain in Smedjebacken, Sweden and Tampa, US, and not merged with Husqvarna's different plants, remains unanswered. Time will tell.

This year started quite strong with a number of important exhibitions. World of Concrete in Las Vegas was staged in January. PDi was exhibiting and there is a report of the show in this issue, which will also be distributed at the triennial Conexpo-Con/Agg show organised by AEM American Association of Equipment Manufacturers. This issue also features a Conexpo review with a list of selected exhibitors related to the product sectors PDi covers.

At about the same time the Italian show Samoter will be held in Verona and will be attended by PDi and a report of the show will be published in the next issue. Also in the next issue will be a report on the German triennial concrete sawing and drilling show BeboSa, which takes place in Willingen. BeboSa is organised by the German Sawing and Drilling Association.

That is about it for global shows for the year, all of them at the beginning of the year and quite an unbalance, but maybe it gives also time to work. We have to wait until 2018 for Intermat, Bauma China, Bauma India and others.

This year's first issue of PDi is comprehensive and nearly as big as our Bauma show issue last year. This proves there is a strong focus on the US market and many international companies are trying their luck at Conexpo in Las Vegas. It is said that over 700 new exhibitors will attend the show this year and the line up is bigger than ever. The US construction market has picked up quite well during the last couple of years and that trend appears to continue, even though

the US is reporting its biggest foreign debt ever. Let us hope that American contractors decide to visit the show instead of staying away working.

From all of us in the PDi team we wish you a prosperous 2017 and please do not hesitate to tell us about your projects or new products during 2017.

Jan Hermansson
Editor-in-Chief

jan.hermansson@pdworld.com



Words from the IACDS President

Busy year ahead!

World of Concrete was a tremendous success, which, on top of more than 50,000 visitors, saw 51 people register for training events and more than 70 young professionals attend the 'next generation' networking reception, which bodes well for the future of the industry.

I was really pleased that, as myself and a colleague from the German association walked around the event we got lots of compliments about the way the IACDS is driving forward and many companies and countries wanting to join.

I would also like to congratulate all of those companies who won Concrete Openings Awards and, once again, showed the ingenuity of those working in our sector.

Apart from that, it was quite cold for Las Vegas but that didn't stop everyone from having a great time and I think I only ended up having about seven hours sleep throughout the whole of the five days!

The events just keep on coming with the BeBoSa Trade Fair in Willingen, Germany, coming up on March 23 to March 26 and we also have the IACDS convention coming up in May in Vienna – it's a spectacular city and we have a great line-up so join us there.

Before that, I am looking ahead to the CSDA Convention in Puerto Rico this March where I have been asked to facilitate a panel event around women in the industry.

They said they wanted somebody outspoken, passionate and with strong views to look after the event – I can't think why they asked me to do it!

Actually, I'm really looking forward to it. I think everyone who knows me, gets the fact that I am not someone who believes in pushing women into roles within our industry just to tick a box.

It's great to see so many women on associations around the world and, when I spoke to a colleague within the association he said that he felt that organisations and companies around the world benefitted in terms of results when they have a mix of men and women on the board.

Our drive to bring more people into the industry should continue to look at ways of attracting more women and I think those females who are already working in our specialist show what they can bring to the industry.

There is plenty of research that shows from an early age, girls and boys are already starting to form stereotypes about what they can be and what they can achieve.

It's just a fact that our type of work – especially at operative level – is more likely to attract men. That's not to say that there are not exceptions. Only recently, I watched in awe two fit, strong women tore down a stud wall with pick hammers – not only were they



good at it, they looked like they were having a whale of a time!

So while we can't stereotype, we do have to recognise that men and women think differently and, therefore, we have to find ways to be approachable to everyone in order to bring the best talent through.

Of course, not every job demands hard labour and it's crucial that we get that message across loud and clear – especially to young women and men. They might not feel cut out for a career as an operative on-site but there are dozens of other disciplines in construction that require the best talent – including estimators, surveyors, bid writers and HR. I must say, we are beginning to see changes as women come into the health & safety and environmental elements of the industry.

As a woman in construction, I was definitely treated differently when I first started out. There were certain clients who I just couldn't go and see because they wouldn't take me seriously – not because of anything I'd done but purely because they had a preconceived idea of a woman in this industry.

Thankfully, I don't come across that now – partly because times have changed and partly because I've grown stronger over the years and know how to deal with individuals like that. However, our girls should not have to put up with that from the start and that sort of behaviour is something I think the industry now rejects.

Again, I am not one who tries to suggest that men and women are the same. We're not, but I think that those differences in the way we think and work can be a huge asset to the industry.

I don't have all the answers and I certainly hope that by reading this it helps to provoke a few questions and thoughts ahead of the Women in Cutting panel event in Puerto Rico. It's in all of our interests to bring the best people through into our great industry and to make sure that the next generation is best equipped to meet the challenges of the future head on.

If anyone has any views ahead of that event, please drop me a line at juliewhite@d-drill.co.uk but please make sure you come along to what should be a lively and provocative event. I don't mind if you even jeer from the back, just make sure you are there.

And, if you can't make that, please make sure you are registered of the IACDS event in Vienna in May.

Julie White, President of IACDS



Husqvarna®

SPRING-LOADED WITH NEW SMART FEATURES

Steplessly adjustable
magnesium blade guard

Easy to start with digital
ignition

SmartTension ensures optimal
belt tensioning

Class-leading power-
to-weight ratio

155 mm cutting depth
with 400 mm blade

Nothing is so good that it can't be improved. This is why we're launching the third generation of the Husqvarna K 970, our user-friendly and reliable all-round petrol power cutter. It handles all jobs even more efficiently, with class-leading cutting depth and power-to-weight ratio. The new SmartTension spring-loaded system ensures optimal belt tensioning for maximum belt life, while digital ignition makes starting very easy. And now you get a full 155 mm cutting depth from a 400 mm blade.

Husqvarna K 970 generation 3 is also available as chain cutter, ring cutter and rescue cutter.
Read more on husqvarnacp.com or contact your local Husqvarna Center.



NEW!

HUSQVARNA K 970

Displacement (cc)	94
Power output (kW)	4.8
Weight (kg)	11/11.6
Blade (mm)	350/400
Max. cutting depth (mm)	125/155

www.husqvarnacp.com

Words from the EDA President

A Global Perspective

The role of EDA President brings with it some "perks".

In January I had the great privilege of being invited to the NDA Annual Convention held in Las Vegas.

I have been fortunate to have attended many of the NDA Conventions over the years and have always enjoyed the networking and socialising with old and new friends alike. I have always been impressed by the NDA's trade show and convention hall, where delegates have the opportunity to meet and discuss all things demolition, and to view up close the very latest in demolition kit – big and small.

This year however I have come back to Europe with some new ideas and thoughts, some of which I have asked EDA Secretary, Jose Blanco, to include on our agenda at our next EDA Board meeting.

Within their conference programme, the NDA arranged discussion seminars and sessions, and I was delighted to take part in the first forum to discuss demolition from a "Global Perspective".

The panel was made up of incoming NDA President Scott Knightly, NFDC President Martin Wilson, and myself as EDA President. The panel was expertly controlled and prompted by industry veteran and good friend Bill Moore.

The topics were varied and there was a degree of shared consolation that no matter where we are on the planet we often share the same issues. Some of the points discussed included :

- 1) Qualifying or Licencing demolition contractors
- 2) Attracting new employees into the industry
- 3) Training the workforce in demolition specific topics
- 4) Emergency Response for Disasters

The area that I thought was incredibly interesting was how the demolition industry could assist with Emergency Response for Disasters.

When you view the tragic consequences of disasters on your television screens, it is striking how so many show images of rescue workers bravely carrying out their duty amidst partially collapsed and dangerous structures.

Obviously each and every emergency will require a bespoke solution coordinated by the rescue workers and authorities, but I cannot help think how effective, and how much safer, the task could be if the rescue teams had the expert assistance and equipment from the demolition industry. Excavators equipped with rotating grapples, controlled by experienced

operators, could greatly assist with debris clearance in a controlled and precise way.

From those at the NDA Conference with experience of disasters in Haiti, Oklahoma City and the earthquakes in Italy, it was suggested that many of the well intended agencies who attend and lead the emergency response, often lack the local knowledge and network of specialist equipment available in their area.

For this reason I have asked for this important topic to be discussed at the next EDA Board meeting. Within Europe, the EDA already has the network of expertise available via our members, and so I would like to reach out to government and rescue agencies to make them aware of our willingness to assist.

The EDA Board meeting will take place in Berlin and will coincide with the 23rd Deutscher Abbruchverband Conference from 10 – 11 March, 2017.

So it is with thanks to the NDA for stimulating ideas and of course for their hospitality at another successful NDA Convention. Everyone is looking forward to returning the hospitality at our EDA Conference and DDR Expo in Brussels, this June.

We look forward to welcoming you there !

About EDA

The EDA was founded in 1978 and is the leading platform for national demolition associations, demolition contractors and suppliers. The EDA has a strong focus on developments in Europe, which are of interest to the demolition industry.

info@europeandemolition.org
www.europeandemolition.org



William Sinclair



Volvo wins innovation award

Volvo Construction Equipment has won Sweden's Quality Innovation of the Year Award in the Potential Innovations category, with its concept HX1 autonomous, battery powered load carrier.

The HX1 futuristic machine is one element of an electric site research project that is predicted to cut carbon emissions by up to 95% and lower total ownership costs by a quarter.

The HX1 represents a new approach to a sustainable future concept based on electromobility and autonomous vehicles. Rather than having a few, large, versatile machines, the HX1 demonstrates the emergence of smaller and more numerous, specialist machines.

"The HX1 forms part of Volvo CE's long term ambition of achieving sustainable transportation solutions," said Volvo CE senior vice president technology function Patrik Lundblad. "This award is a tribute to the hard work and vision of Volvo CE's employees, who continue

to push the boundaries of technology and innovation. This is a welcome recognition that demonstrates Volvo CE's position at the forefront of technological development."

Since 2011, the Quality Innovation Awards in Sweden has recognized organizations that present innovative solutions created using a systematic approach to meet clearly identified customer needs. Part of an international series of awards, the partners of SIQ's Quality Innovation of the Year Award are innovation agency Vinnova and Deloitte Sweden.

The judging panel said that the HX1 featured a totally new and revolutionary approach to transportation systems, and introduced a shift to smaller and autonomous electrified vehicles. The panel added that it was groundbreaking in the industry and provided a glimpse of how the future may look.

www.volvocem.com



Atlas Copco to acquire Erkat Spezialmaschinen und Service

Atlas Copco has agreed to acquire the German drum cutter excavator attachment manufacturer Erkat Spezialmaschinen und Service for an undisclosed sum. The acquisition is expected to be completed in the first quarter of 2017. Erkat is based in Hämloch and has sales and service locations worldwide. The company has 38 employees and revenue of €12M in 2015. "Drum cutters are an ideal complemen-

tary product for Atlas Copco as a solution provider in rock excavation, tunnel and foundation profiling and demolition," said Atlas Copco Construction Tools Division president Vladimir Kozlovskiy. "Drum Cutters close the gap in certain applications between the ordinary buckets which are suitable for soil excavation and the highly sophisticated hydraulic breakers which are used in hard rock extraction."

ZENESIS®

WORLD'S MOST ADVANCED
PATTERNED DIAMOND TECHNOLOGY



New
edition R



BLASTRAC' SUPPORTS FOLDS OF HONOR

Blastrac has chosen the Folds of Honor Foundation to receive proceeds from the sale of the Blastrac 1-16DB4-V2, which was displayed with a new look exclusively for the 2017 World of Concrete.

The US Air Force Reserve F-16 fighter pilot Major Dan Rooney has committed to spend his life changing the future of America's grieving spouses and children. In 2007, he formed the Folds of Honor Foundation; a 501C-3 non-profit organization dedicated to providing educational scholarships to the children and spouses of those fallen or disabled while serving our nation.

Senior vice president and co-founder of Folds of Honor Major Ed Pulido, was a special guest of Blastrac at WOC. Major Pulido's story of courage and sacrifice has been featured in Time Magazine, PGA Magazine, Fox News, CNN and many national and local Oklahoma City television stations and print media. Be sure to come by the booth Tuesday, January 17th from 10:00 am to 12:00 pm and from 3:30 pm to 5:30 pm where Major Ed will be signing his book *Warrior for Freedom*. Portion of proceeds go to Folds of Honor.

"Those of us at Blastrac understand the sacrifices military personnel make for their country," said, Blastrac president Mark Haworth. "Many of our Blastrac employees have or had family members in the military and we are also proud of our veterans employed here at Blastrac. We must not forget those families who are a part of this sacrifice. It is an honour through Folds of Honor to pay tribute to those who paid the sacrifice for our freedoms."

Cyclone Technology's CY5500 was displayed at the showed at Blastrac booth following Blastrac Global's acquisition of Nilfisk Cyclone Technology from the Nilfisk Group in October, 2016. Cyclone Technology is a manufacturer of high and low pressure surface preparation and cleaning equipment, using proprietary and patented technology, is located in Tempe, Arizona.

www.blastrac.com



Conjet appoints new chief executive and chairman

The Swedish hydrodemolition equipment manufacturer Conjet has appointed Kjell Nilsson as the company's new chief executive, replacing Carl Strömdahl who becomes chairman of the company.

Kjell Nilsson has held various positions at Conjet in the past 16 years and knows the company's different departments well, from product development, manufacturing, marketing and sales to service and after sales. He played a significant role in the development of Conjet's modular product platform, launched in 2013.

Prior to joining Conjet in 2000 he worked for Atlas Copco for 25 years. "Kjell has a solid knowledge of Conjet's products and operations and has extensive experience as a project manager, solid technical industry knowledge and good social skills. He has also demonstrated to be highly results oriented. It feels good now to pass on the baton to Kjell," said Strömdahl,

"I feel very honoured to have been offered the position as chief executive of Conjet, which is a strong player in a market with huge potential," said Nilsson. "Moreover, it is exciting to work in a company with continued high pioneering spirit. It was Conjet that introduced hydrodemolition technology in the mid 1980s and I look forward to leading the strong and competent Conjet team into the future."

www.conjet.com

Dynaset launches new website

Dynaset has launched a new website designed to give better customer experience and provide a lot more information.

New clean design, new products page, work applications and machine guides give customers a better understanding of the Dynaset product range. With the improved contact page, including a new dealer locator, the website helps customers to find closest Dynaset contact. Also more useful materials are now available. Customers can download data sheets and other materials from the website.

The webpage was constructed with the latest technology in mind, working fluently in both desktop and mobile devices. Social media and networking presence has also been increased. www.dynaset.com, www.facebook.com/dynaset

Atlas Copco propose to split the Group

Atlas Copco will propose at the Annual General Meeting 2018 on a split of the Group into two listed companies, Atlas Copco and NewCo (working name), and to distribute NewCo to the shareholders.

NewCo will focus on mining and civil engineering customers and include the existing mining and rock excavation technique business area and the construction tools division with related service operations. This business has approximately 12,000 employees and had pro forma revenues of €3bn and an operating margin of about 16% for the 12 months ended 30 September 2016.

Atlas Copco will focus on industrial customers and include the compressor technique, vacuum technique and industrial technique business areas plus the portable energy division, including service, and the specialty rental division. This business has approximately 33,000 employees and pro forma revenues of €7.9bn and an operating margin

of about 20% for the 12 months ended 30 September 2016.

"The Board and management believe that long-term shareholder value will be created by splitting the Group into two separate companies," said Atlas Copco Chairman Hans Stråberg. "Both businesses are global leaders in their respective fields and will benefit from a more focused management responsibility."

"The two businesses have different demand drivers and demand characteristics," said Atlas Copco Group president and chief executive Ronnie Leten. "A split will increase their respective abilities to add value to customers, grow the business and attract talent."

If the shareholders decide in favour of the proposal, the split is planned through a share distribution, whereby Atlas Copco's shareholders will receive shares in NewCo in proportion to their existing shareholding. The intention is to list NewCo AB on the Nasdaq Stockholm stock exchange in the second quarter 2018.

Caterpillar to move global headquarters to Chicago area

Caterpillar is to move its global headquarters from Peoria, Illinois to a new facility in the Chicago area later this year. A group of senior executives and support functions will transfer, while the company has reaffirmed the ongoing importance of its presence in Peoria and Central Illinois. "Since 2012, about two-thirds of Caterpillar's sales and revenues have come from outside the US," said Caterpillar chief executive Jim Umpleby. "Locating our headquarters closer to a global transportation hub, such as Chicago, means we can meet with our global customers, dealers and employees more easily and frequently."



Mecalac acquires Fermec and Benford

The French construction equipment manufacturer Groupe Mecalac signed an agreement with the Terex Corporation in December 2016, to acquire their backhoe loader, site dumper and compaction roller dedicated subsidiary, known under the Fermec and Benford brands.

This acquisition allows Mecalac to broaden its offering with a complementary range of products, open up to new geographical distribution areas and expand the Group's companies' industrial know-how.

The acquisition will be completed during the first semester of 2017. "This acquisition follows our growth strategy, based on excellence, on the broadening of our range of equipment for urban construction sites, and on international distribution deployment," said Groupe Mecalac chief executive Henri Marchetti. "Our intent is to foster the sharing of expertise, the development of industrial and sales synergies, and to encourage cultural exchanges along with sharing our fundamental values among the teams."



New products!

DRS-FLOOR

efficient concrete solutions from a single source

**Shot blaster
DSBM-400**



**Crack and joint
chaser DCS-200**



DBS-820-4H A-Laser



**Crack and joint
repair solutions**



Case achieves world class manufacturing certification

Case Construction Equipment has received a Silver Level World Class Manufacturing certification for the company's skid steer loader and compact track loader manufacturing plant in Wichita, Kansas, US. WCM is one of the global manufacturing industry's highest standards for the integrated management of manufacturing plants and processes. It is based on continuous improvement to eliminate waste and loss from the production process.



Husqvarna adds dust and slurry management equipment

Husqvarna Construction Products launched a new range of equipment at the recent World of Concrete show in Las Vegas incorporating dust and slurry management systems inherited from its recent acquisition of Pullman Ermator.

"By integrating Pullman Ermator's market leading dust and slurry management technologies into Husqvarna's concrete cutting, drilling and grinding systems, we can provide

even more efficient, total solutions," said Husqvarna Construction Products president Henric Andersson.

During WOC 13 new dust and slurry management products were introduced to the Americas market. These included three-phase HEPA dust extractors and pre-separators for heavy jobs, wet/slurry vacuums, single-phase HEPA dust extractors and portable HEPA air scrubbers.

Husqvarna's new dust and slurry management system will also be introduced in stages on all markets during 2017. "With these new products, we will be able to offer our customers even more efficient system solutions and a wider, more complete range of products and services," said, Husqvarna Construction global floor grinding and polishing products manager Joakim Leff-Hallstein.

www.husqvarnacp.com



TOKU 



Made in Japan

TOKU Pneumatic Co., Ltd.

3-4, 4-Chome Katakasu, Hakata-ku,
Fukuoka, 812-0043, Japan
Tel: +81-92-431-0401
Fax: +81-92-431-1014
www.toku-net.co.jp/en/



HSD

PROFESSIONAL DIAMOND SOLUTION

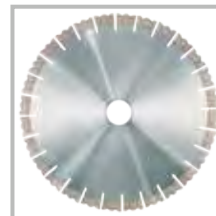
EDIA
EVOLUTION OF DIAMOND IMPREGNATION ARRAY



EDIA, LASER HANDHELD,
THIN & SHORT EXECUTION



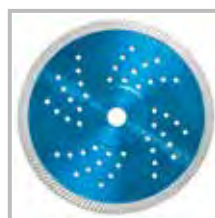
EDIA, WALL SAW BLADE



EDIA,
SPLIT TURBO EXECUTION



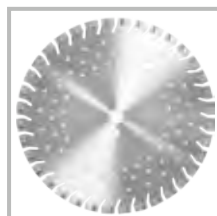
EDIA, RING SAW BLADE



RAPTOR TURBO CUTTER



SONIC, CERAMIC CUTTING



SHORT SEGMENT EXECUTION



TRIANGLE CUP



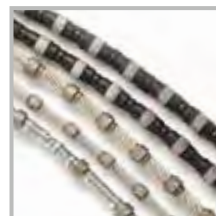
EDIA ROOF TOP
CORE DRILL SEGMENT



VACUUM RESCUE BLADE



POLISHING PADS



WIRE SAW

- Continuous development of new products and of new technology
- Competitive price to your profits
- Sustainable quality
- Quick delivery from warehouse in Germany
- Perfect product safety by new EN 13236

HSD Europe GmbH

Mergenthalerallee 77, 65760 Eschborn, Germany Tel. +49 (0) 6196 96 79 00 Fax. +49 (0) 6196 96 790 15 E-Mail. info@hsdeu.com



GIVE 'EM A HA

The latest in handheld tools for concrete construction and demolition work emphasize comfort and boosted battery power. Jim Parsons reports.

Philosopher Marshal McLuhan once observed that we shape our tools, then our tools shape us. If the quality of the latest iteration of handheld products for concrete work is any indication, the industry's contractors are in pretty good shape, figuratively speaking, at least.

Gone are the days of noisy, dusty, vibration-heavy tools that were uncomfortable to handle, hard to maintain, if at all, and often limited work to the length of whatever extension cord was available. Current products, on the other hand, are designed with comfort in mind and, in many cases, boast high-capacity batteries that

last longer, and recharge in the blink of an electron. And with the new US silica dust control standard set to take effect this year, many tools produced for the North American market now mirror their overseas counterparts, with easy adaptability to a variety of systems that make for cleaner, healthier workplaces.

Yet the essence of handheld tools remains their reliable go-anywhere versatility. Whether setting up for an extended series of drills and cuts, or doing touch up work, contractors like to know what to expect when they reach for that device and flip the on switch. Judging by



ND!

some products, they are getting a lot more than ever before. This in turn means that they will be getting a lot more done too.

Skilsaw introduces first worm drive saw specifically for concrete

Skilsaw, the leader in woodcutting saws for more than 90 years, has created Medusaw, believed to be the world's first fully integrated worm drive saw designed to score and cut concrete. Until now, users had to create their own tool workarounds to score concrete by modifying

a worm drive saw with costly third-party or homemade attachments, and the results were less than ideal.

Medusaw features a Cut-Ready adjustable plunge lock that allows users to quickly and accurately set and make consistent plunge cuts. The saw also has an integrated rolling foot plate with rubber wheels, which helps move it smoothly across hard surfaces, and rust resistant brackets and fasteners to protect against corrosion. Medusaw also has a retractable front pointer to guide the saw along the cut line and retracts for tight spaces.

Skilsaw engineered this saw with an integrated wet/dry dust management systems, and GFCI protection. Medusaw comes equipped with an onboard multi-function wrench, making it easy for users to change their blades, oil, brushes, water feed attachment, and wheels.

Hilti debuts 22V battery technology

Hilti's expanded cordless portfolio of solutions and services underwent major upgrade with the introduction of the company's new 22V CPC Li-ion batteries, the industry's first and only backwards compatible battery technology. This voltage means up 20% more work per charge, depending on application, insert, user and temperature than the Hilti 18V batteries, and up to 50% more than competitive 18V/5Ah solutions.



The company is also introducing several new cordless products tailor-made for the new technology, such as the SF 6H-A22 ATC hammer drill/driver, which is claimed to offers best-in-class performance-to-size ratio. This is the first cordless drill to incorporate active torque control for greater operator control. This senses and reduces potential kickback by shutting off the tool if the housing begins to rotate too quickly.

The SF 6H-A22 ATC is built for a variety of applications and materials including wood, metal, masonry, and aerated concrete. Its two gear settings deliver a 480revs/min no-load speed in first gear and 1,600revs/min no-load speed in second gear. The SF 6H-A22 ATC also has a hammering frequency of 28,800blows/min.

Hilti's SID 4-A22 impact driver has been redesigned for better performance in tight spaces. Hilti has streamlined the SID 4-A22 with a new handle and trigger shape that gives more control and improved precision in screw fastening applications. Four LEDs around the front of the tool provide improved illumination, while a stab-style 6.35mm hex shank chuck makes for fast insert changes.



The SF 10W-A22 ATC drill/driver delivers corded performance in a cordless tool and also features active torque control. This cordless drill can drill up to 152.4mm diameter holes in multiple layers of wood, and features four gears for drilling in metal and other materials. The high torque low gear offers 120Nm of torque and allows the drill to perform as well as a corded drill in demanding applications.

All three of the new 22V tools are compatible with Hilti's 18V batteries.

Bosch's new drill/drivers

Users can't miss with Bosch's latest 18V 12.7mm drill/driver and hammer drill/drivers. The DDH183 18V EC brushless brute tough drill/driver and HDH183 18V EC brushless brute tough hammer drill/driver pack more features than their predecessors, including kickback control and an improved ergonomic design.

The kickback control stops the drill's rotation during bit bind-up situations. A new LED light shows when kickback control is activated or the tool's overload protection is activated. In addition, the new drivers offer over 25 precision clutch settings, which provide driving accuracy for reduced fastener and work piece damage. Both models deliver 75Nm of torque at two speeds.

The DDH183 and HDH183 are each driven by an EC brushless motor that provides double the tool life of a standard motor, longer runtimes, and virtually no maintenance. The design also ensures a shorter head length and a lighter tool with no reduction in power. That is combined with an upgraded metal chuck. The Bosch durashield housing adds to overall tool durability and improved handle geometry offers a comfortable grip.



The Bosch flexible power system is one of the most versatile Li-ion battery platforms available. It offers compatibility by allowing 18V fatpack and slimpack batteries to be used with any tool. Bosch 18V batteries also feature coolpack technology, which offers a heat conductive housing to keep batteries cooler for superior runtime and up to twice the life. All Bosch batteries provide cold weather performance to -20° C as well as an integrated fuel gauge.

The tool includes Bosch electronic cell protection that protects the battery against overload, overheating and deep discharge. Likewise, Bosch electronic motor protection protects the motor against overload with integrated temperature management.

Also from Bosch are the Bulldog Xtreme SDS-plus rotary hammer bits for use with cordless power tools. They retain full-head carbide for bits up to 16mm that deliver four times the drilling life in reinforced concrete. The geometry ensures performance with less carbide wear. Larger-diameter bits feature a four-cutter design.

The overall flute design enhances dust removal, reduces operating temperatures and reduces bit stress in concrete and rebar. Full-head carbide bits feature the velocity flute design, four flutes that transition to two larger flutes for increased dust removal capacity and a cleaner hole. Bosch uses proprietary diffusion bonding technology and high-heat, high-pressure solid-state welding process to produce a steel/carbide bond.

The centric conical tip guides the bit and results in rounder holes. A wear mark alerts the user when the bit has worn to a level where it is no longer precise. Bit sizes for the full range extend from 4.8mm to 28.6mm in diameter. The bits will be available at the beginning of April 2017.



Dewalt's new combination hammer kit

The DCH481X2 60V Max brushless 40mm SDS Max combination hammer is a lightweight high-performance hammer powered by a Dewalt brushless motor delivering 6.1J of impact energy. The lightweight unit makes it ideally suited for horizontal drilling for number 4 to 8 rebar, dry coring, and chipping in middle to upper wall and ceiling applications.

Dewalt's patented E-clutch system provides enhanced control in bind-up and can help minimize sudden torque reaction compared to standard clutches. The active vibration control delivers reduced vibration for less user fatigue and greater productivity. With its balanced design, shocks active vibration control technology and extreme run time, the DCH481X2 is ideally suited for all day use.

Also from Dewalt is the Flexvolt system featuring batteries that automatically change voltage when users change tools. The 6Ah and 9Ah models power the line of brushless 60V and 120V Flexvolt tools, and provide more than three times the battery power of a Dewalt 18V NiCad unit.

Flexvolt batteries are backwards compatible with most existing Dewalt 20V tools and chargers. When used in Dewalt 20V tools, the 6Ah Flexvolt battery provides up to four times more runtime, depending on the application.

The key to this technology is the ability of the Flexvolt batteries to switch between Dewalt tools of varying voltages. Two Flexvolt batteries of same Ah together power the new Dewalt 120V tools. This means that high power tool applications that previously could only be accomplished by corded tools can now be performed with the Dewalt Flexvolt system of cordless tools. As a result of this battery technology, jobsites can now fully transition from corded to the freedom of cordless.

The new 60V Max Flexvolt brushless tools include a 184mm circular saw DCS575, 152mm



grinder DCG414, a reciprocating saw DCS388, a 12.7mm VSR stud and joist drill DCD460, and a 203mm table saw DCS7485. The new 120V Max Flexvolt tools are a 305mm fixed head compound mitre saw DHS716, and 305mm sliding compound mitre saw DHS790.

Also capable of operating off the Flexvolt battery platform are new 20V tools, including a portable power station DCB1800, Bluetooth radio charger DCR025, and Bluetooth LED area light DCL070. Dewalt's 20V hammer drill and impact driver combination kit DCK299 will also be offered kitted with a 6Ah Flexvolt battery in addition to a 2Ah battery.

In addition to the tools, Flexvolt high efficiency accessories are engineered to Maximize Runtime. This new line is optimized for use with cordless power tools to deliver more cuts or holes per charge than standard Dewalt accessories.

Each Flexvolt tool comes with the standard Dewalt three year limited warranty, one year free service, and 90 day money back guarantee. The Flexvolt batteries come with a three year limited warranty, three year free service, and 90 day money back guarantee.





TM

ARIX Generation 3

Advanced multi-layered diamond segments
with precise distribution of diamond particles

THREE GENERATIONS BEYOND

TURN YOUR DREAMS INTO REALITY

Meet the third innovation of the original
diamond array technology that changed
the industry in 2005. ARIX G3, superior
performance you can see and feel.



SHINHAN DIAMOND

36B-10L Namdong Industrial Complex, 610-9, Namchon-dong, Namdong-gu, Incheon, 405-100, Korea
TEL. +82.32.820.3801 | FAX. +82.32.810.3456 | E-mail. terry@shinhandia.co.kr



Durable Performance

Increase the capabilities of your concrete cutting toolbox. Operate a full range of Pentruder High Frequency equipment simply by connecting the same Pentpak, remote control, motor, and cables to a wall saw, a wire saw or a heavy duty core drill.

All Pentruder equipment is Made in Sweden. We produce precision parts in-house, from the best materials, in state of the art production machines. With over 35 years of experience from designing concrete cutting equipment, we know how to build high performance, durable systems.

Visit our website for more information www.pentruder.com

Or check out our facebook page www.facebook.com/pentruder or Instagram [pentruder_official](https://www.instagram.com/pentruder_official)

Pentruder[®]
CONCRETE CUTTING SYSTEMS

Designed and manufactured by:
Tractive AB | Gjutargatan 54 | 78170 Borlänge | Sweden
Tel: +46 (0)243 221155 | Fax: +46 (0)243 221180
E-mail: info@tractive.se | www.pentruder.com





Makita delivers cordless rebar-cutting solution

Makita has delivered a cordless and spark free cutting solution for rebar and steel rod with the model XCS01Z 18V LXT Li-ion cordless rebar cutter.

The XCS01Z has a cutting range of 3.2mm to 19mm and the cutting head that rotates 360°. The cutting blade provides up to 4,000 cuts before requiring replacement and an ideal solution for work away from a power source or in remote locations.

The XCS01Z is part of Makita's expanding 18V Li-ion system, believed to be the world's largest cordless tool system powered by 18V Li-ion slide-style batteries. Makita 18V Li-ion batteries have the fastest charge times in their categories.

Added features include an adjustable stopper holding rebar at 90° to the cutting blade and assists in smooth cutting. The pistol grip handle with rubberized soft grip provides increased comfort.

The XCS01Z is engineered for fast cutting, with a cutting speed of 6.5s for all rebar sizes. It delivers up to 200 cuts of 9.5mm rebar with a 3Ah LXT battery, and up to 150 cuts of 12.7mm rebar with a 3Ah LXT battery. For extended run time and more cuts per charge, users can take advantage of the higher Ah Makita 18V batteries, including the 18V LXT 4Ah and 5Ah batteries.

Makita's 18V Rotary Hammer Delivers Corded Performance Without the Cord

Also from Makita is the 18V 25.4mm XRH05Z cordless rotary hammer with corded performance. Two 18V LXT batteries power the XRH05Z, delivering the run time for corded demands without leaving the 18V platform. With

3J of impact energy and 4,800blows/min, the XRH05Z rotary hammer is engineered to meet the demands of corded 25.4mm drilling and hammering concrete applications without having to drag around a cord.

The XRH05Z rotary hammer delivers up to twice the drilling speed of 18V rotary hammers, with up to three times as many holes drilled. As with other Makita rotary hammers, the XRH05Z includes three-mode operation, one-touch sliding chuck, and a torque limiting clutch to prevent gear damage by automatically disengaging gears if the bit binds.

The XRH05Z also has LED battery indicators that show the charge level for each 18V battery. It has a vibration-absorbing handle, and a compact design at only 362mm long that weighs 5.1kg.

Added features include an adjustable stopper that holds the rebar at 90° to the cutting blade, and assists in smooth cutting. The pistol grip handle with rubberized soft grip provides increased comfort.

For improved tool performance and extended tool and battery life, all Makita tools feature star protection computer controls. This innovative communication technology allows the star protection equipped tool and battery to exchange data in real time and monitor conditions during use to protect against overloading, over discharging, and overheating. The XAG10M can also be powered by Makita's range of 18V LXT Li-ion batteries with the star symbol on the battery, including 2Ah, 3Ah, 4Ah, 5Ah, and 6Ah models.





Tuesday, 7 March to Friday, 10 March
Exhibits 9am to 5pm.
Saturday, 11 March
Exhibits 9am to 3pm.
Times are Pacific Standard Time.

Great expectations for **CONEXPO**

This coming Conexpo-Con/Agg show, to be held on 7 to 11 March at the Las Vegas Convention Center in Nevada, US, is well placed to set a record number of exhibitors and attract record number of visitors. PDi Editor in chief Jan Hermansson reports.



This time the US building and construction industry is in a much better shape than at the last Conexpo three years ago, which covered an exhibition area of around 232,000m². This year there are about 2,300 exhibitors so far registered, including over 700 new ones, with many companies from foreign countries and around 125,000 visitors expected through the turnstiles.

Strong industry

Conexpo-Con/Agg is organised by the American Equipment Manufacturers Associations and could be compared as the US answer to Bauma in Germany. It is not as big as Bauma but the equipment displayed is more on the heavy side, like Bauma. Light construction equipment, such as concrete cutting machinery, diamond tools and concrete floor grinding equipment, is not represented in the same way as at World of Concrete, but heavy demolition carriers and attachments, as

well as mobile recycling equipment will be on display. There will also be over 150 education sessions covering asphalt, aggregates, concrete, earthmoving, lifting, mining and utilities.

What's new for 2017?

The Tech Experience is something new, which is a 7,000m² area where the future of the construction industry will be displayed and how businesses can become more profitable and more efficient.

There is also the new Badge-Pack that includes a free Las Vegas Monorail multi-day pass and free bus to and from the show to most hotels; access to seven different halls on all five show days and discounts at various Las Vegas bars and restaurants and entry to the new Tech Experience.

There is also a new system that helps visitors keep track of exhibitors visited and who to follow-up. There are also new education packs including technology,

business management, workforce development, and more. The show also has its own radio programme this year.

Things to do

To benefit The Call of Duty Endowment, the show is hosting benefit auctions and a benefit concert with all of the proceeds going to the Call of Duty Endowment. There will also be a NASCAR Experiences at the show and meetings for young visitors to join with their peers to network and have some fun.

In this issue of PDi there is a list of exhibitors related to the product areas covered by the magazine, such as demolition, recycling, concrete cutting and floor grinding, hydrodemolition and related equipment. For a full list of all exhibitors please visit the Conexpo-Con/Agg website.

The show issues of PDi and PDa magazines will be available for collection at the main entrance.



Less weight, more power

Low cost of ownership – it's worth to have a look at the lifecycle cost of your hydraulic breakers!

We always strive to use the required resources, like energy and manpower, in the most effective way. Our highly efficient and productive hydraulic breakers contribute to your profitable business.

Sustainable Productivity

Atlas Copco

2017 OVERVIEW

Las Vegas Convention Center | Las Vegas, USA | March 7-11, 2017 | Tuesday-Friday



THE TECH EXPERIENCE

Imagine What's Next: Infrastructure

- Infrastructure Vision 2050 Challenge
- Modern Mobility
- Infrastructure Influences
- Advanced Materials

Imagine What's Next: Jobsite

- Autonomous Vehicles
- Equipment Intelligence
- Site Intelligence & Visualization

Imagine What's Next: Workforce

- Career Mapping
- Simulator Training
- Smart Wearables

Tech Talk Sessions

- Drone Aviary
- 3D Printworks
- World's First 3D Printed Excavator

Aggregates Processing:

- Gold Hall
- Bronze Lot
- Silver 1-2
- Central 3-5
- Bronze Hall

Asphalt Production & Paving

- Gold Hall
- Bronze Lot
- Silver 1-2
- Central 3-5
- Bronze Hall

Concrete Construction & Manufacturing:

- Bronze Lot
- South Hall 1-2
- Bronze Hall

Earthmoving, Equipment & Material Handling:

- Gold Lot
- Gold Hall
- North Hall
- Central 1-2

Engine, Components, & Electronics:

- South 4
- Bronze Hall
- Bronze Lot
- Gold

Landclearing:

- Gold Lot
- Silver 2
- Central 1-2

Infrastructure:

- Bronze Lot
- South Hall

Information Business:



- South Hall
- Bronze Lot
- Gold Hall
- Bronze Hall

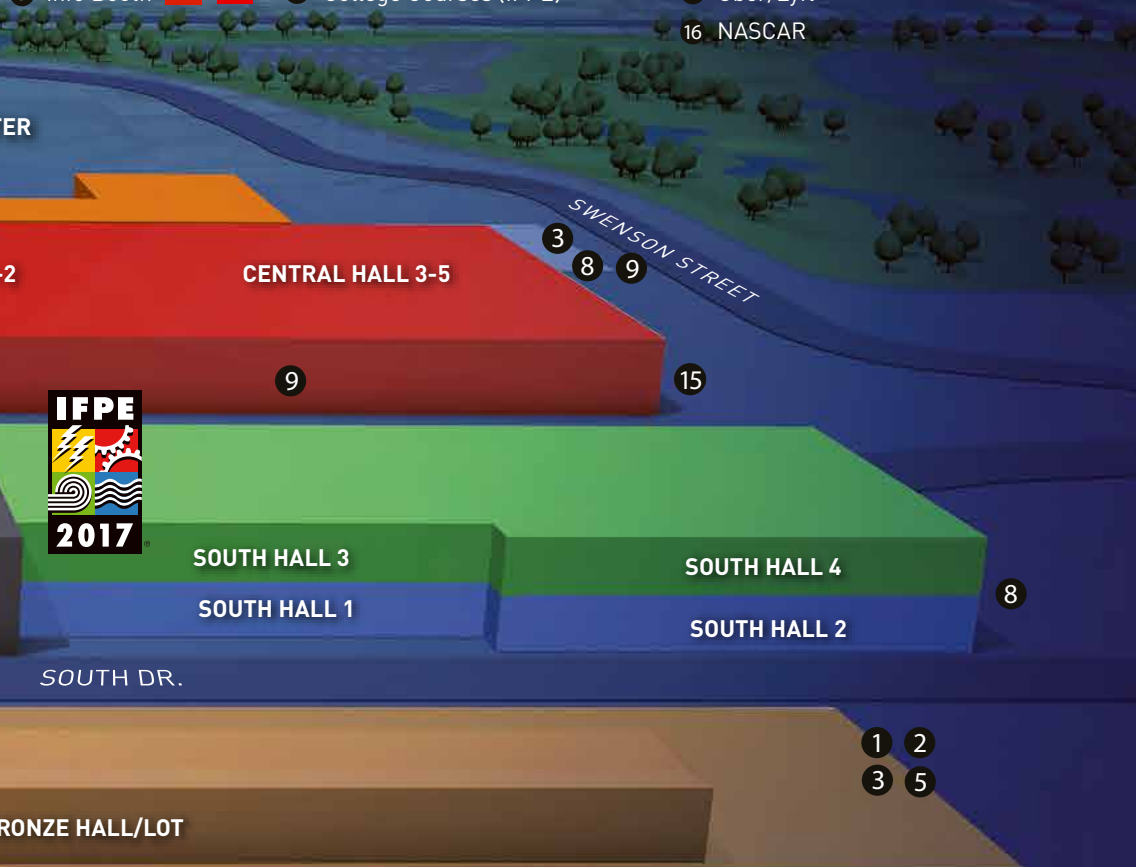
MAP

9:00 AM-5:00 PM | Saturday, 9:00 AM-3:00 PM



**IF IT'S NEW,
IT'S HERE.**

- | | | |
|--|------------------------------------|------------------------------|
| 1 Registration Area | 6 Show Store | 11 EEHPC (IFPE) |
| 2 Hotel Shuttle | 7 International Trade Center (ITC) | 12 CONEXPO-CON/AGG Education |
| 3 Tram | 8 Taxi | 13 Tech Talks |
| 4 Info Booth | 9 Food/Beverage | 14 Beer Garden |
| 5 Info Booth   | 10 College Courses (IFPE) | 15 Uber/Lyft |
| | | 16 NASCAR |



- | | | | |
|---|--------------------------------------|------------------------------|----------------------------------|
| Structure Support: | Hauling Equipment: | Safety & Traffic: | Underground Construction: |
| • Central 1-2 | • Central 1-2 | • South Hall 1-2 | • Silver 1-2 |
| • Gold Hall | • Gold Hall | • Bronze Hall | • Central 3-5 |
| • Gold Lot | • Gold Lot | • Gold Hall | • Bronze Hall |
| | | • Bronze Lot | |
| Construction Technology & Solutions: | Lifting (Ariel & Cranes): | Trucking: | IFPE: |
| • Central 1-2 | • Gold Lot | • South Hall 1-2 | • South Hall 3-4 |
| • Gold Hall | • Gold Hall | • Bronze Lot | |
| • North Hall | • North Hall | | |
| • Central 1-2 | • Central 1-2 | | |

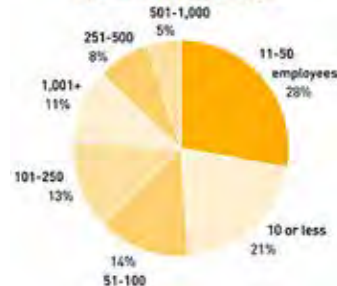
Attendance by business type

Contractors	63%
Producers	5%
Dealers & Distributors	17%
Government	1%
Mining	4%
Manufacturing	7%
Service Providers	3%

Attendance by title



Attendance by company size



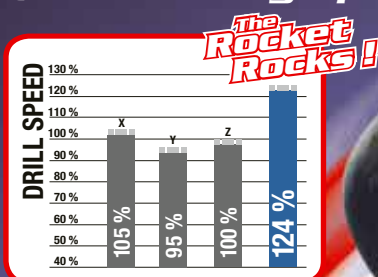
Conexpo-Con/Agg 2017 Selected list of exhibitors

Acme Speciality Mfg Co	B-93128	Cormidi USA	G-2229	Joy Global	C-31011
Ajax Tool Works Inc	S-63543	Crusher Rental & Sales Inc	C-33100	Kaeser Compressors Inc	S-63029
Alimak Hek Inc	G-1825	Crusher Wear Parts	B-90711	Kinshofer	G-4547
Allen Engineering Corp.	B-7213	Daemo Engineering Ltd	C-22911	KOBELCO Construction Machinery USA	N-10002
Allied Construction Products LLC	C-30056	Western Star Trucks	S-63629	Kobelco Cranes North America Inc	G-4155
ALLU Group Inc	G-3749	Western Star Trucks	B-9300	Kolberg-Pioneer Inc	C-30332
Altec	G-4864	Darda GmbH	G-72914	Komatsu America Corp	G-4183
American Concrete Institute	B-90005	Deutz Corporation	S-85230	Komatsu America Corp.	N-10902
Honda Engines	S-84834	Dexter + Chaney	S-64811	KOCEMA (Korea Construction Equipment Manufacturers Association)	C-22741
AMI Attachments Inc.	G-1533	Diamond Blade Warehouse	S-64717	Korea Construction Equipment Manufacturers Assn	
AMMANN Group	S-5464	Diamond Speed Products	S-61857	Lake Erie Portable Screeners	S-5193
Antraquip Corporation	C-20671	Diamond Z / Rule Steel	S-5574	Layher Inc.	S-62152
Aqua Blast Corp.	S-62448	Digga North America	C-21059	Liebherr	G-4637
Aqua Patch Road Materials, L.L.C.	B-90521	Doosan Construction Equipment	G-4476	Liebherr Components AG	S-84230
ARJES GmbH	B-9001	Doosan Infracore Construction Equipment	G-4476	Link-Belt Construction Equipment	G-3864
Arrow Material Handling Products	S-5066	Bobcat Company	G-4476	Magnum Attachments Inc	N-10602
Arrowhead Rockdrill Company Inc	S-5048	Doosan Infracore Portable Power	G-4476	Manitou Americas	G-4165
Arrow-Magnolia International	G-71206	Doosan Infracore Engine	S-84216	Gehl	G-4165
The Associated General Contractors of America (AGC)	GL-11279	Doosan Construction Equipment	G-4876	Mustang	G-4165
Association of Equipment Manufacturers (AEM)	GL-20401	Bobcat Company		MB Crusher America, Inc.	S-5211
Tech Experience	S-Tech	Eagle Crusher Company Inc	C-31427	McCloskey Washing Systems	S-5115
Astec Industries Inc	C-30332	Dieci	G-4408	McCloskey International Ltd	S-5014
Astec, Inc.	C-30332	Dieci United States, LLC	G-4408	McCloskey International Ltd	S-5115
Astec Mobile Screens	C-30332	Erkat Spezialmaschinen und Service GmbH	-73022	McCloskey Washing Systems	S-5014
Chicago Pneumatic	C-31727	OilQuick USA	C-32707	Metso	C-31061
Atlas Copco- Mining, Rock Excavation and Construction LLC	C-31486	Jetstream of Houston	C-21014	Nakayama Iron Works Ltd	G-73813
ATLAS Group	G-4436	MobyDick Site Emission Control	S-5871	Next Hydraulics S.R.L.	G-4082
AUSA	G-2331	Rain For Rent/MobyDick Wheelwashing	S-5877	Nordic Lights	B-93502
Avant Tecno USA	G-1628	FRD Furukawa Rock Drill USA	C-31045	NPK Construction Equipment Inc	C-21026
B2W Software	S-65228	Genesis Attachments, Div. of IES	S-5614	Okada America	C-32815
Bell Equipment North America Inc	G-3243	GSSI	S-62452	OSA Demolition Equipment SRL	S-5589
Best Hammer Industries	N-13354	Giant Hydraulic Tech Co., Ltd.	B-93325	Peterbilt Motors Company	S-63839
Ready Jet	B-9201	Giatec Scientific Inc	B-90729	Portafill USA	S-5560
Blasters, Inc	B-8807	GILBERT - Grizzly MultiGrip	S-6231	Power Curbers Inc	S-60538
Breaker Technology Consolidated, Ltd.	C-30332	GOMACO Corporation	C-30380	Premier Attachments	B-8805
Briggs + Stratton Corporation	B-7316	GOMACO Corporation	C-30880	PRINOTH	G-4023
BROKK	B-90703	Rivard	G-4177	Promove srl	G-2031
Workforce - BROKK	S-Tech	LiuGong	G-3322	Putzmeister America, Inc.	B-7017
Brunner & Lay, Inc.	S-62147	Hartl Crusher North America LLC	S-5828	Putzmeister America, Inc.	S-60713
Buffalo Turbine	C-33255	Hatz Diesel of America, Inc.	S-83840	Ramco Construction Tools, Inc.	C-22041
Buffalo Wire Works Co., Inc.	C-32957	Hilti Inc	S-61239	REMU USA, Inc	G-2616
Buggy Whip Inc.	G-73602	Jobsite - Hilti Inc	S-Tech	Robo Industries Inc.	G-3229
C.L.M. s.r.l. (edilizia)	S-5140	HYDRA srl	S-5039	Jobsite - ROBO Industries Inc.	S-Tech
Cangini Benne SRL	N-10066	Hydra-Tech Pumps	B-90925	Rock Tools Equipment, LLC	G-1827
Canycom USA Inc	C-21040	Hydraulic Breaker Services	C-20823	Rockbreaker Steel Tools	B-92229
Caterpillar Inc	N-10924	Hyundai Construction Equipment	N-11603	AUTEC Safety Remote Control - USA	N-13380
Caterpillar Inc	G-4490	UNACEA	S-5136	Rotar North America	S-5674
Jobsite - Caterpillar Inc	S-Tech	ICS, Blount Inc.	B-7526	Rototilt Inc.	G-2217
Workforce - Caterpillar Inc	S-Tech	Ideal Blasting Supply, Inc.	G-4209	RUBBLE MASTER AMERICAS, Corp.	S-5057
Jobsite - Caterpillar Inc	S-Tech	IMAG-International Exhibition and Fair Service Ltd		Sandvik Mining and Rock Technology	S-5128
Cavotec Inc	B-90415	Inan Makina San.Ve Tic. A.S.	G-3132	SANY Group Co., Ltd.	G-2877
SANY Group Co., Ltd. (Parts Area).	G-74002	Indeco North America	N-10614	Sennebogen LLC	G-4027
CASE Construction Equipment.	N-11825	IROCK Crushers LLC	C-33065	Sensors & Software Inc	S-63350
COBRA America LLC	C-31088	Isuzu Motors America, LLC	S-85405	Simex, srl	S-5846
Construction & Demolition Recycling Association	GL-20901	Johnson Crushers International Inc.	C-30332	SSAB Inc.	S-62239
Construction & Demolition Recycling Pavilion		JIANGYIN SHIYOU HYDRAULIC MACHINERY CO.,LTD	B-92817	Stanley Infrastructure / LaBounty	S-65507
Construction Equipment Association	C-22807	John Deere Construction / HITACHI Construction	N-12525	Terex Corporation	G-3382
		HITACHI Construction Machinery Company	N-12525	Jobsite - Genie - A Terex Brand	S-Tech
				Terex Washing Systems/Evoquip	C-22705
				Tesab Engineering	C-32436

The Rocket Rocks !

*We are proud to introduce
the Ultimate Rocket* Drill line.*

- ***Up to 30 % faster***
(best drilling speed for core drilling tools)



- ***Competitive price***
- ***Made in Belgium***

Why "Rocket drill" ?
This nickname comes from one of our customers !
Try the Rocket, you will understand !

****Only by CARBODIAM***

CARBODIAM s.a.

Rue Général Mellier 27 B - 1495 Tilly - BELGIUM - +32 (0)71 870 640

Contact : sales@carbodiam.com



Conexpo-Con/Agg 2017 Selected list of exhibitors

Toku America, Inc.	G-72703	Volvo Construction Equipment North America LLC	V.T.N. EUROPE S.p.A.	S-5028
Toku America, Inc.	G-4315		Wacker Neuson	G-3435
Trevi Benne SPA	G-3764		Wirtgen America Inc	C-31239
UNACEA		Volvo Construction Equipment North America LLC	Kleemann	C-31239
Vermeer Corporation	C-32627		Blount International	C-20553
Vibra-Ram Inc	S-5209	SDLG North America	Zoomlion Heavy Industry Science &	
Jobsite - Volvo	S-Tech	Terex Trucks	Technology Co., Ltd	G-2793
Workforce - Volvo	S-Tech	Volvo Penta		
		Volvo Penta		





CONEXPO-CON/AGG 2017
March 07 - 11
Booth G72914

darda
www.darda.de

Demolition with no limits

 low noise
 low vibration

 low dust
 eco friendly

Demolition tools made in Germany

Aubrey, Andrew and Adrian Young
with their HB 27 breaker.
Together since 1987. Find out about
their story at www.indeco.it



**The youngest worker in this photo is 29 years old.
All 29 spent working in the family.**

Since Young Bros purchased it, back in 1987, our HB 27 breaker hasn't missed a beat. All down to our unrivalled technology, our patented special materials and the meticulous care we've always taken over making every single product. And that care continues once the breaker rolls off the production line - from our local dealers, to our international subsidiaries, to the parent company in Italy. When you choose Indeco, you know you can count on a united, efficient team, ever ready to deal with any after-sales issues that might arise. And that's why, even after 29 years of back-breaking toil, our breaker is still productive and reliable. Like one of the family.



ONE IDEA MORE SOLUTIONS



Stand S-5028

SaMoTer

Hall 6 Stand D4

VTN
EUROPE®
MAKE MORE



HONDA DISPLAYS NEW PRODUCTS AT CONEXPO

Honda Engines will show a number of products at Conexpo on booth S84834, including the new cyclone air cleaner, available soon on the Honda GX160, GX200, GX270 and GX390 engines. The design targets OEM applications where engine dimensions are critical. The new cyclone air cleaner offers the same filtration efficiency with a triple-cleaning chamber that is useful in commercial applications where power equipment operates in extremely dusty conditions.

Also on display will be the Honda GXR120 general purpose engine developed as an ideal source of power for soil compactor. The engine can appropriately power 50kg to 80kg rammers at multiple altitudes with ease.

GX pressure washer optimized commercial series engines make their debut in 2017 and will be a Conexpo highlight. These engines were specifically designed for direct-drive pressure washer applications, and the optimized series is available with Honda GX160, GX200, GX270 and GX390 engines. The model line delivers Honda's smooth and reliable power, maximized engine performance at wide-open throttle and increased power output in the GX200 and GX390 series. A new feature for the optimized engines is a fixed throttle, which enables superior performance.

Honda will also display some of its latest power products at its other booth B7404. These include the EB2800i Industrial Series and EG2800i Economy Series generators and its comprehensive line of water pumps for a wide variety of construction, agricultural, and rental applications.



NEW ATLAS COPCO Portable Energy products at CONEXPO

Atlas Copco Portable Energy will launch new generators, light towers pumps and compressors at Conexpo on stand C31486.

"The latest additions to our Portable Energy range have been developed to offer further improvements in energy efficiency, greater flexibility on-site and long-lasting performance. This ensures our customers receive maximum productivity, profitability and ease of movement," said Atlas Copco Portable Energy division president Peter Lauwers.

Generators

Atlas Copco's new QAS generator range has been designed specifically for the US market. The eight model range has power ratings from 25kVA to 330kVA. All QAS generators include the latest Tier 4 Final engine and have a footprint 25% smaller than the previous generation. The starting mechanism ensures that stable power is achieved in less than six seconds.

Also the company's new iP inverter generators, which are available in power ratings between 1.6kVA to 3kVA, feature variable speed smart control and use electronics and magnets to deliver a predictable source of AC power at the required voltage and frequency.

Light Towers

Conexpo will see the HiLight E3+ make its debut in the US market. The electric-only LED model provides plug-and-light capabilities enabling users to connect to a power source, including auxiliary power, a generator or directly into the grid. Up to four HiLight E3+ models can be powered by a single Atlas Copco iP generator.

All models in the HiLight range include LED lights and Atlas Copco's HardHat canopy. HiLight towers deliver significant fuel savings of up to 60% when compared to the typical fuel consumption of metal halide solutions. Depending on the model, HiLight towers consume fuel at less than 0.6litre/h, giving a run-time of up to 260h before refuelling. A single HiLight can illuminate an area of up to 4,900m² and provide an average luminosity of 20 Luxes.

Pumps

Atlas Copco will also debut three new PAS diesel pumps at the show. With an outlet of 117mm or 200mm, the diaphragm pumps have a pumping head of up to 55m and accommodate flows of up to 16570litres/min.

Over the next 12 months Atlas Copco will also replace its WEDA electric range with the WEDA+ range and the WEDA+ 50 and 60 models will be launched at Conexpo.

Portable Compressors

Portable compressors will also feature and the new XAS 400 will be displayed, which features a pressure adjusted through cognitive electronics system that enables users to match air flow and pressure to application needs, without requiring multiple compressor units.

Visitors to the booth will also have the opportunity to experience a virtual 3D construction site with the opportunity to interact with different types of portable energy equipment, and learn how Atlas Copco keeps customers connected to machines in the field.

Terex MPS at Conexpo

Terex Materials Processing Systems, a leader in material processing technology for modular, portable and static crushing and screening equipment, will be at Conexpo at booth G3882, to relaunch the Simplicity A Terex brand. Simplicity will continue to operate under the Terex MPS umbrella. Terex MPS will also be displaying the new CRC1150S portable plant featuring the TC1150 225kW Terex cone crusher and the TSV6203 deck screen.



CATERPILLAR'S NEW machines and technology at Conexpo

At Conexpo Caterpillar will present its extensive line of machines and technology and customer support capabilities. With 40 machines on display in two different exhibition areas, Caterpillar's presence will be among the largest at the show. Cat Connect Technologies for machine control and monitoring will share the spotlight

with machines ranging from a skid steer loader to a 96t excavator. Eight Cat machines will make their public debut including excavators, wheel loaders, a dozer, an articulated truck, a telehandler and cold planers. Caterpillar will also introduce new remote control technologies and connectivity technologies.

AVANT TECNO USA

to launch multi-functional loaders at ConExpo

Avant Tecno will debut its full line of multi-functional loaders at ConExpo-Con/Agg at booth G1628, the first time the company has exhibited at the show.

Avant, manufactured in Finland, is well known in Europe and in over 50 countries worldwide. The North American team will be showing Avant's 200, 400, 500, 600, and 700 series loaders along with various attachments for the construction, demolition, landscaping, and mining markets.

The Avant articulated, compact loaders are multi-purpose, multi-functional machines. With hundreds of attachments to choose from, there is a solution for every market segment. In the construction and demolition market, the loaders utilize many attachments in a variety of configurations including concrete mixers, soil screening buckets, vibrating plate and brick paver installation clamp for construction projects; hydraulic breakers, cutter crusher, and an asphalt grinder for demolition jobs.

With Avant's attachment coupler and hydraulic multi-connector attachments can be changed quickly.



NO MORE BLOWN CIRCUITS!

FLOOR GRINDERS – 110V, LESS THAN 15A

The newly redesigned Scan Combiflex 18 and 330RS feature powerful 110V motors that draw less than 15 amps!
Both units also offer variable speed control.

SWEDISH QUALITY AND KNOW-HOW SINCE 1975

SCAN COMBIFLEX 18

Voltage: 110-120 V 1 ~
Motor Power: 1,1 kW
Current: 15 Amp
Frequency: 60 Hz
Grinding speed: 200-500 rpm
Grinding disc: 3 x 150 mm / 3 x 6"
Grinding width: 450 mm / 18"
Weight: 95 kg / 210 lbs
Other: Variable speed control

SCAN COMBIFLEX 330RS

Voltage: 110-120 V 1 ~
Motor Power: 1,1 kW
Current: 15 Amp
Frequency: 60 Hz
Grinding speed: 150-400 rpm
Grinding disc: 1 x 330 mm / 13"
Grinding width: 330 mm / 13"
Weight: 70 kg / 154 lbs.
Other: Variable speed control
& edge grinding

SCANMASKIN
MACHINES-MINERALS-KNOW-HOW

SCANMASKIN.COM



LiuGong launches biggest materials handler

LiuGong's new 45t reach stacker, CLG2450, has come off the production line at LiuGong International Industry Park in Liuzhou, Guangxi, China. It's the company's first materials handling machine built specifically for container handling.

Making the operation machine intuitive, efficient, and accurate was a key driver in the engineering and design. The control system has a digital, multi-language interface and an automatic fault detection system, allowing for quick maintenance and repair. It has been designed by LiuGong's industrial design team in the UK and the forklift research and development team in Liuzhou.



Terex Finlay launches impact crusher

Terex Finlay has introduced the I-140 direct drive 1270mm x 1240mm horizontal impact crusher with variable speed for recycling, mining and quarrying applications. The Terex CR032 chamber gives excellent reduction ratios and high consistency of product shape. The machine has an electronic control system that monitors and controls rotor speed and regulates the vibrating feeder with integrated pre-screen to maintain consistent feed of material into the impact chamber.



VOLVO TO PUSH boundaries at Conexpo

At Conexpo Volvo will offer visitors multiple interactive experiences to show how it is pushing boundaries of conventional machine design and technology. Visitors will interact with new intelligent operator systems, machine monitoring technologies, and visit a 3D theatre. A range of new technologies and services will be unveiled, including ActiveCare Direct and Dig Assist.



Liebherr at Conexpo

At Conexpo Liebherr will present an extensive selection of its earthmoving, materials handling and construction equipment product ranges at the outdoor booth G4637. Focus will be on the latest products including XPower wheel loaders with an innovative power-split driveline concept, LH40M

and LH22 materials handlers, the A 918 Litronic excavator and new R 920 compact Litronic crawler excavator, the R 960 high-reach demolition excavator, PR 756 dozer, six new pipelayers and rough terrain cranes, tower cranes and crawler cranes and a concrete pump.

Keestrack at Conexpo

Keestrack will use Conexpo to strengthen its position in the American markets and present solutions for the recycling and aggregates industry at its booth C33043. Keestrack America was founded 10 years ago, to support its expanding dealer network in North America markets and recently opened a new facility in Dallas, Texas.

A highlight at Conexpo will be the new H4 tracked cone crusher. The compact plant features the KT-H4 cone crusher, which produces up to 250t/h at maximum feed sizes of 178mm. The wide variety of concaves allows flexibility in secondary or tertiary production of defined end fractions. To optimize production the plant can be optionally equipped with a pre-screen with fines chute and with a three-deck secondary screen module with recycling conveyor for closed circuit processing. A big feeder volume, large screening areas and high stockpile capacities allow very productive operations.

The Keestrack H4 has a hybrid diesel-electric drive with a 345kW Tier 4f diesel and 330kVA generator, 135kW E-drive for the crusher. This guarantees economic fuel consumption and ease of maintenance through the wide use of electric motors on screens and conveyors. The recently introduced full-hybrid version

H4e even allows full electric operation through mains or an external gen set. An additional electric motor/hydro pump then supplies the hydraulic driven feeder, the secondary screen module, the tracks and all hydraulic cylinders.

Keestrack will also display its 33t tracked impactor R3, the smallest unit of its impactor range and the 55t R5. Both machines feature active pre-screening and will be shown with full optional equipment, which includes magnetic separators, fines conveyors and secondary screen modules with closed-circuit operation. Both direct driven crushing units are characterized through large and heavy rotors, which guarantee high crushing energy combined with smooth running.

Large inlet openings and efficient overload protection systems ensure productive operation in typical recycling applications without pre-sorting or pulverizing. The machines displayed feature diesel-hydraulic drives with load sensing hydraulics. As with the larger R6, the R5 can also be equipped with a hybrid diesel-electric drive. A 150kVA on-board generator then supplies the electric drives for conveyors and screen modules, offering important fuel saving potentials up to 25% compared to the diesel hydraulic version.



AQUA CUTTER 410V



www.aquajet.se

THE BEST OF TWO THINGS

Let us introduce the new AQUA CUTTER 410V.

It is a carefully balanced mix of our successful robots, 410A and 710V.
It's basically a combination of the worlds smallest and the worlds most
versatile hydrodemolition robots.

Imagine what you could do.



Visit us at Conexpo
Las Vegas, NV
March 7-11, 2017
Booth: B90703 together with Brokk

AQUAJET
SYSTEMS AB



IMPAKTOR 250 presents at ConExpo

Arjes will present its new Impaktor 250 to the North American market at ConExpo at booth B9001. The one machine has a twin shaft double jaw breaker and two speed track system, mobile hook lift and eight channel remote control. It can handle all kinds of materials, such as reinforced concrete, tarmac, construction and demolition waste and wood. The Impaktor 250, weighing 14.5t with magnet, is powered by a 160kW Volvo Penta 5litre Tier 4 Final engine. The maximum torque of the shafts is 80,000Nm. The hourly output of mixed construction and demolition debris is about 110t, for concrete around 95t, for waste wood 20t and for root stocks 15t.



Rietlanden Terminals and Enerco join forces

In The Netherlands Enerco and Rietlanden Terminals have joined forces to secure a dust free future at their scrap and coal handling terminals.

After an excessive testing period with the SprayCannons at sea and on land, MB Dustcontrol, based in Voorschoten, The Netherlands, was granted the order for three SprayCannon 90 Self Supporting Units. These SprayCannon installations are believed to be the first, which are suitable for spraying sea water and normal clean water. The units are fully equipped with a 16,000litre water tank, 40kVA Generator, Vacuum pump, SprayCannon 90 with remote control, electrical oscillation, elevation and frequency steering fan/pump. The SprayCannons will spray up to a distance of 90m and height of 40m.

www.spraycannon.com
www.mb-dustcontrol.com



Allu transforming more than just profits

The ALLU Group will exhibit at CONEXPO/ CONAGG exhibition in Las Vegas. At the show Allu will provide focus on their Transformer Series, showing how their screening buckets can help transform the operation of the contractor's business, whatever application, and in the world.

The ALLU Transformer Series comprises of an excavator/ loader/ tractor mounted bucket which screens, crushes, pulverizes, aerates, blends, mixes, separates, feeds and loads materials. This results in the feed material being effectively transformed into highly valuable products, making the business more efficient, and more profitable. Catering for applications of all sizes, and capable of processing any material that can be screened and sorted, the ALLU Transformer Series

comprises of the compact DL & D Series as well as the truly massive M Series.

The ALLU DL Series has been designed to be mounted on 12t, loaders, and 8t tractors and backhoe loaders. This means they are ideally suited to the requirements of companies requiring limited, yet profitable, material separation, crushing and processing. The basis of the DL bucket is the unique top screen where the screening blades spin between the top screen combs with the end material size being defined by the space between the combs.

Likewise, the ALLU Transformer D Series comprises of a highly reliable screening bucket ideal for a variety of screening and crushing projects. Whilst their versatility sets them apart, they share the DL-series' use of innovative fine-screening TS® drum construction with standard blades.



NATIONAL FLOORING EQUIPMENT LAUNCHES HELIX GRINDER

The US surface preparation company National Flooring Equipment has launched the Helix planetary grinder. It combines ease of transport, manoeuvrability and edge-grinding capabilities in a machine for small commercial or residential jobs.

Designed for small jobs and tough to reach spaces, the Helix is a 406mm planetary grinder that creates the ideal profile for new coatings. The machine features an edge grinder, dual speed operation, an adjustable handle and a floating dust skirt.

The Helix's handle offers operators a range of options. Users can detach the handle from the base, fold it into multiple positions and adjust its height for comfort on the job. This also means the machine is easy to store and transport. The Helix offers an LED light incorporated into the handle so that operators can assess the scratch pattern during the job and ensure maximum efficiency.

"We designed the machine in response to customer feedback to make sure it is engineered specifically for end users," said NFE president Derek Olson. "The design of the Helix means it is ideal for manoeuvring and transporting during small residential or light commercial jobs."

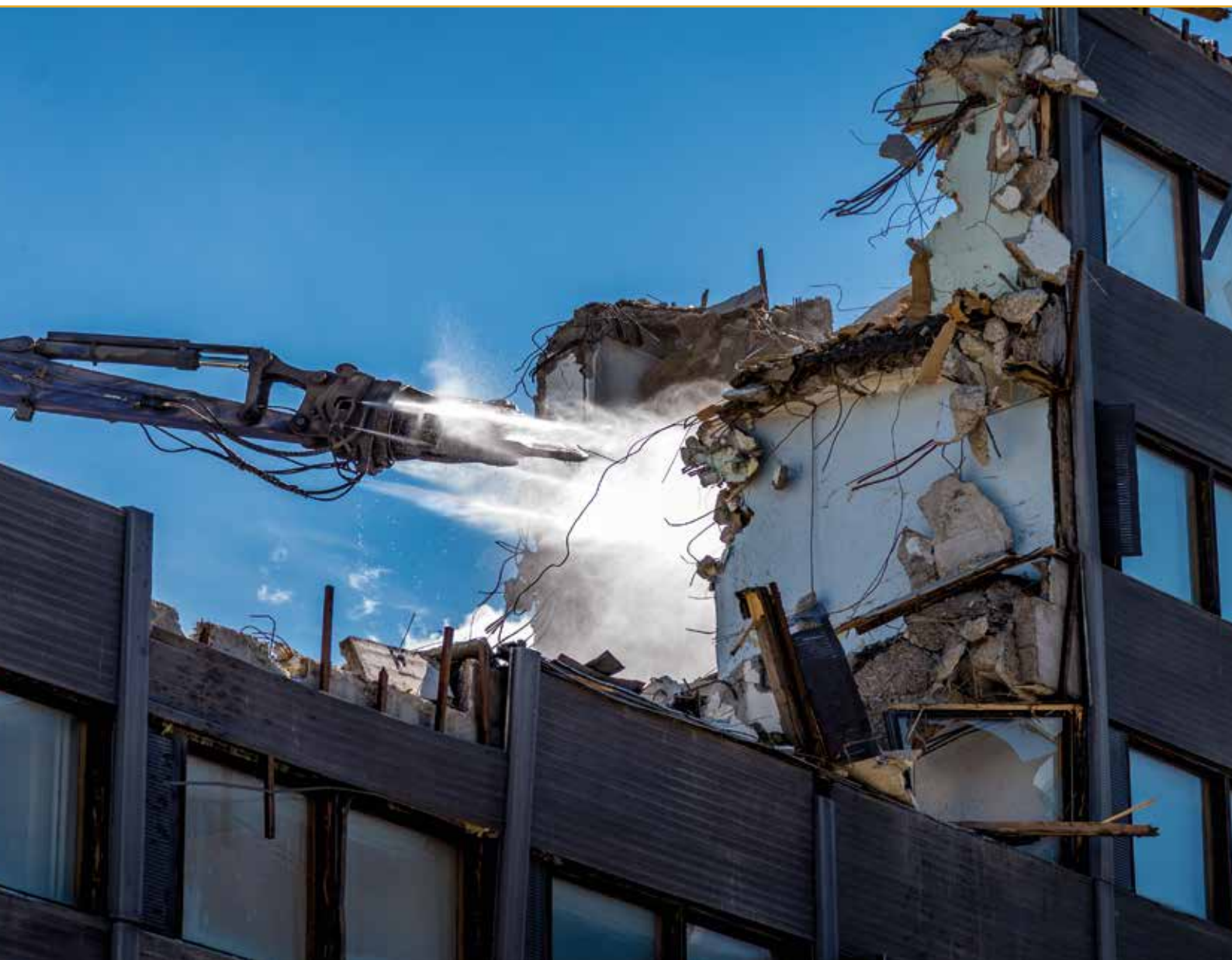
"One key benefit of this machine is its edge-grinding capabilities. Whereas the majority of grinders are only able to reach within 25mm 50mm of the wall, the Helix has a specifically designed edge grinding portion that means it can reach within 12mm of the wall on the left or right side of the grinding head. This dramatically reduces labour intensive hand grinding needed to complete the job."

www.nationalequipment.com



HPW-DUST HIGH PRESSURE DUST SUPPRESSION

POWERED BY HYDRAULICS



HYDRAULIC EQUIPMENT FOR MOBILE MACHINERY

GENERATORS
VARIABLE GENERATORS
WELDING GENERATORS
MAGNET GENERATORS
MAGNETS
INSTALLATION VALVES

POWER WASHERS
STREET WASHING UNITS
PIPE CLEANING UNITS
DUST SUPPRESSION
DRILLING FLUID PUMPS
FIRE FIGHTING SYSTEM

AIR COMPRESSORS
BIN WASHING SYSTEM
POWER BOOSTERS
POWER TAKE-OFF
VIBRAS
ETC.





WORLD OF CONCRETE kicks up the dust

In Las Vegas, fortunes can change with the flip of a card, a roll of the dice, or the choice of video slot machine to while away a few hours and likely a few \$20 bills. One never knows when, or even if, it will happen, which after all, is all part of the city's allure.

But there are certainties in life. And for US contractors, it's the scheduled late June deadline for compliance with the new silica dust exposure rules, aimed at making workplaces healthier and, perhaps, keeping those experienced and, increasingly, coveted workers on the job for a few years longer.

And while dust-control technology has been a staple at the city's annual World of Concrete show over the past several years, the 2017 edition might well have been themed, "all dust, all the time."

That should hardly be surprising, given the industry make-up of World of Concrete's target audience. But having an unofficial theme, at least among many of the exhibitors, may have also helped the show escape the shadow of its big brother Conexpo-Conagg, set to occupy the expanses of the Las Vegas Convention Center less than two months later.

WOC's visitor numbers and exhibitors were down 15% and 5% from 2016 to 50,770 and 1,455 respectively, which is not unusual for a Conexpo year. But while Conexpo may offer the masses, WOC might well have provided contractors the intimacy to ask manufacturers some questions, especially those who may have waited until the last minute to make their equipment inventory silica ready.

It was at WOC that many visitors first learned of Husqvarna's acquisition of its Swedish vacuum and slurry counterpart, Pullman-Ermator. One Husqvarna

product representative commented that the exhibitor had to scramble to have enough red Pullman-Ermator

units properly decked out in Husqvarna orange for the show. There was no word as to how the acquisition might affect the company's Tampa based US operations, or if it might fast forward the development of new dust control products.

Hilti's mammoth WOC display featured the first of what new North America chief executive Avi Kahn promised are 75 new products to be rolled out in 2017. Among them is the DD250 rig based diamond coring tool with a drilling range of 12.7mm to 457mm, and





MADE IN
GERMANY

PREMIUM DIAMOND TOOLS & MACHINES



KERN-DEUDIAM
Diamantwerkzeuge und Maschinen GmbH

Tel. +49 5257 507-0 Industriestraße 24
Fax +49 5257 507-40 33161 Hövelhof
info@kern-deudiam.de | kern-deudiam.de



Leading with innovation:
A compact and powerful
demolition robot
with built-in intelligence

See us in booth B90703



INTRODUCING:
110

In 1976 we promised to give super powers to some of the hardest working people on earth. We've kept that promise by continuously listening to our customers and providing them with innovative solutions year after year. Now we're introducing our latest addition: The Brokk 110. Built to face anything in its way, the Brokk 110 features a new, robust design, more power and Brokk SmartPower™ – an 'intelligent' new electronic system that ensures a more consistent power supply. At the same time, the Brokk 110 is compact enough to go where no demolition robot has gone before.

Discover a more intelligent future at www.brokk.com

BROKK®

Brokk AB Skellefteå | www.brokk.com



NEW ERA FOR PILE CUTTING

MotoCut Ltd has developed a new and innovative device which cut concrete piles. With this innovative MotoCut pile cutter you cut concrete piles fast, safe, easy and with high cutting quality. MotoCut pile cutter is a new generation tool that can be installed on an excavator.

See Us at CONEXPO-CON/AGG 2017

Inside: OilQuick USA
stand C32707

Outside: Pinnacle
Drilling stand S6517



www.motocut.fi
MotoCut Oy Ltd (Finland)
teijo.talka@motocut.fi
CMO Teijo Talka
tel. +358 50 556 7055

MOTOCUT
Cutting edge technologies



four gears for faster drilling speed at the right torque. Rotating speeds range from 240revs/min to 2,220revs/min.

Hilti also displayed a self-priming pump attachment for its DSH 700 and 900 saws that will simplify water sourcing for wet cutting. Testing is expected to be completed shortly prior to anticipated release in June, along with other dust management products.

Also prominent at the Hilti booth was a new line of 22V cordless tools, powered by batteries that the company promises provide 20% more work per charge than its 18V units, and are compatible with the company's older tools.

Dustcontrol and better power were also the top topics of conversation at Bosch's booth, with several universal vacuum attachments designed to easily connect the company's breakers, drills, and grinders. Bosch's Core 18V batteries also attracted a lot of attention, as the 10-cell units promise to deliver 80% more power than the company's previous generation batteries, yet with only a minimal size increase that does not affect their use on Bosch cordless tools.

Dewalt visitors could try the D25303DH dust extraction system designed for the Brushless 20V DCH273P2 25mm rotary hammer. The system features a 2s power-off delay ensuring that dust extraction continues after the drill is switched off, a clear high-capacity dust box, replaceable dust nozzle, replaceable HEPA filter, and a quick release for easy attachment and dismantling.

There were many other dust-control solutions across the exhibition halls, along with machines to help generate all that material. Superabrasive introduced the new Lavina-X series of dust extractors that includes propane and electric models in several sizes to pair with any Lavina or other grinders on the market.

The line includes the 14.2kW V32G-X propane model, which will be followed by a smaller counterpart later this year, and several electric models ranging from 2.4kW to 7.5kW.

The vacuums complimented two new Lavina propane grinders, the 814mm unit, and larger L38GR-X, a 965mm remotely controlled machine.

At the combined Blastrac/Diamatic booth, visitors were greeted with Blastrac's new BDC 122 110V large bag dust collector with an H-class HEPA filter, and several revamped Diamatic propane grinders with Briggs and Stratton engines. Among them were the 26kW, 711mm BMG 735P, and the BG 300 edger with a pivoting head that hugs walls closer and more consistently than before.

While many of the start-up grinder/polisher companies that appeared at the outset of the surface preparation boom have fallen by the wayside, Phoenix, Arizona based Prep Tech Systems is still flexing its muscles with its new Iron Horse PRO line of grinders





GO AHEAD, STAND BEHIND IT.



We do.

National Flooring Equipment sets the industry standard for mobility, adaptability, and durability. We have online training tools and on-demand customer service, so you know we have your back.

9250 Xylon Avenue North | Minneapolis, MN 55445 | nationalequipment.com
Main: 763.315.5300 | Toll Free: 800.245.0267 | Fax: 800.648.7124

**NATIONAL
FLOORING
EQUIPMENT**

Made in America Since 1968



that owner Scott Mourtisen says is the highest on-pressure tool in the world.

The planetary driven PT ONE 635mm grinder on display boasts 317kg of pressure in its operating

configuration, and a nine-position adjustable weight system designed for varying tool pressure requirements. "This line is designed for long-term jobs, where contractors are working weeks at a time," said Mourtisen, who developed the products based on his own experience as a surface preparation professional.

Among other new products was the Atlas Copco Cobra PROi gas breaker, the first with a custom electronic fuel injection system that uses up to 2.75bar less than standard systems. Weighing just 24kg, the PROi has a 2-stroke, 90cc engine delivering up to 60J of breaking force.

In addition to its dust extraction products, Dewalt rolled out 15 new grinders and nine new rotary and demolition hammers, headlined by the SDS 60V MAX* 40mm combination hammer.

For high-rise work, contractors will want to keep an eye out for Skyjack's 78kW 1256TH telehandler, which will be in production later this spring. A prototype on display was said to have the capacity to lift 5,443kg to 10.6m and 3,175kg to 16.7m.

Also on the watch list is Lackmond Products of Marietta, Georgia, which has formed a new partnership with a manufacturer in the Netherlands to create a line of handheld core drills for grinding and polishing. The company promises the new products should be arriving on the North American market soon.

However, contractors do not have to wait for is Skilsaw's new Medusaw worm-drive concrete saw that features a Cut-Ready adjustable plunge lock that allows users to quickly and accurately set and make consistent plunge cuts. "With Medusaw we built features into the tool so you don't need a second person to hold a vacuum or water hose to collect the dust," said Skilsaw product manager Gregg Mangialardi.

For bigger cutting jobs, Merit debuted the AWD-65HP-G, the first steerable all-wheel drive saw, with an innovative patent-pending design that provides superior control and ease of operation when cutting uphill, downhill, sideways on a grade, and radii. Merit also showed a new line of spark-ignited gas flat saws, ranging in power from 10.4kW to 65kW.

Time at WOC was time well spent, even if the travel budget may get squeezed with another trip to Las Vegas in just a few months. But concrete contractors who want to be in the know and up to date with their equipment needs will find the investment well worth it.

And they will be wise to circle the week of 22 January 2018, on their calendars, as that is when WOC will return. According to the show's organizers, 73% of 2017's exhibitors have already booked space at the show, which will have the start of the construction exhibition season all to itself.

www.worldofconcrete.com

Idromeccanica

Ramtec

Demolition Equipment

SaMoTer

HALL 6
STAND B8

50TH INTERNATIONAL EARTH-MOVING AND BUILDING MACHINERY EXHIBITION

VERONA, ITALY

22-25 February 2017

samoter.com

UNICERT
ISO 9001:2008

Idromeccanica Ramtec s.r.l. - 70056 Molfetta (BA) Italy - Via Antichi Pastifici - Z.I.
 Tel. +39 080 338.58.32 + Fax. +39 080 338.68.33
 internet: www.ramtec.it e-mail: info@ramtec.it

YOUR COMPLETE SOURCE FOR BREAKING ROCK.

VISIT US AT



Booth - S62147



PAVING BREAKERS



DEMOLITION TOOLS



ROCK DRILLING

Whether you need to break a sidewalk or the side of a mountain, we've got a durable, dependable solution for you. If you need tools for construction, mining, or demolition—we're the only name you need to know.

Call (800) 872-6899 or visit BrunnerLay.com

**Brunner
& Lay**

"Quality First" since 1882

SPEED

 **OKADA**

OKADA AIYON CORPORATION
supplies a variety of attachments mounted on excavators and has
been an innovator in the field for many years all over the world.



www.okada-aiyon.com | sales@aiyon.co.jp | 4-1-18, Kaigan-dori, Minato-ku, Osaka 552-0022, Japan | Tel 81 6 6516 1268 | Fax 81 6 6576 1516





A good day at work.

Everyone wants to have a good day at work. The first step to achieve this is to work with machines that last and that meets or exceeds the expectations. Day after day, year after year. It is also important that the machines in question are kind to your body, so you feel good even after the workday is over.

We manufacture and supply dust extractors, air cleaners and wet vacs of the highest quality. Our machines are designed with the users' well-being at the top of the list, protecting both your back and your lungs. The machines are, for example, ergonomically designed and lightweight. Dust extractors and air cleaners are equipped with H13-filter that takes care of the smallest and most dangerous particles. Our wet vacs are equipped with powerful evacuation pumps so you can pump away the liquid which is taken up.

Do you also want a better day at work? We have the solutions.

pullman-ermator.se





New products from **Superabrasive**

Superabrasive, the manufacturer of LAVINA, has recently introduced new propane-powered LAVINA grinders, including a 32-inch, six-head propane grinder L32G-X and a 38-inch remote-controlled L38GR-X. Both models are featuring chain-driven forced planetary drive, powerful Kawasaki FX921V engine, integrated weights and adjustable grinding pressure. These propane machines do not require any electrical wiring or generators, and take no time to set up on the job site.

At WOC 2017 Superabrasive also launched a completely new LAVINA-X series of dust extractors, including one propane (V32G-X) and three electric models in different CFM and voltage options to suit any grinding project. All dust extractors are equipped with Hepa filters, and Longopac bagging system, as well as an automatic Jet Pulse filter cleaning (except V20-X).

Last but not least, Superabrasive introduced Trowel Shine, a new concrete polishing system for power trowels

that offers incredible productivity rates and minimal start-up cost. The system features rotating tool holder heads with flexible foam for an even tool wear and perfect balance. The Trowel Shine holders, offered in 10.63-inch and 14-inch sizes, are mounted to a power trowel pans, and have Velcro attachment for quick and easy tool changes with Superabrasive's high quality diamond pads.

www.superabrasive.us

PROFESSIONAL CORE DRILLING PRODUCTS

LISSMAC
CONSTRUCTION TECHNOLOGY

BeBoSa 2017
Hall 2, Stand 2A01

LISSMAC Maschinenbau GmbH
Lanzstraße 4
88410 Bad Wurzach, Germany
Phone +49 7564 307-0
lissmac@lissmac.com, www.lissmac.com



ATLAS COPCO EXPANDS bucket crusher range

Atlas Copco has added two bucket crushers BC 2100 and BC 5300 weighing 2t and 5.3t for use on carriers weighing 18t to 54t. They can be used as an alternative to a mobile jaw crusher for small demolition, recycling and road construction applications, offering flexibility of operating reach, depending on the mobility of the carrier.

A circular crushing cycle gives BC bucket crushers up to 30% higher output than previous models. Full loading capacity can be used without blockages and

the absence of slippage during startup ensures constant power transmission and no extra load on the bearings.

The automatic anti-lock mechanism gives continuous repositioning of the material, ensuring that even larger pieces are guided automatically in the direction of the crushing jaw. If the material gets jammed, the reversing function enables the operator to change the rotation direction, push the material back into the inlet and remove the blockage.



News from **VIPERMETAL**

The Finnish attachment specialists Ajutech Oy with their Vipermetal brand of crushing and screening buckets, have a wide range of new technology, high-capacity rotary drum crushing buckets and complete range of screening buckets to excavators and wheel loaders.

Vipermetal have launched two high-capacity rotary drum crushing buckets specially designed for use on excavators. Viper branded screening and crushing buckets have successfully reused and separated various materials and fragmentations, allowing the in-situ usage of otherwise wasted materials. The issue on many demolition worksites, however, has been the crushing segment. Large mobile crushers often require heavy transportation vehicles, which are not always practical for use on limited space worksites with relatively modest quantities of material to be crushed.

Viper crushing bucket attachments have met the need of moving lightweight crushers and maximizing the capabilities to use excavators as base machines.

In response to customer demand, the Vipermetal has expanded the product line with the launch of two new crusher buckets – the VPH 21, one drum crusher version designed for excavators from 20 to 30 tons and

the VPPV 22 unit, which features two drum versions for excavators weighing more than 30 tons.

The new, patented rotary drum crushing technology deployed on the new crusher buckets has been specially developed for demolition applications and helping contractors to recycle construction waste effectively and economically.

Vipermetal premium line of 3D screening buckets

Vipermetal also carries a complete line of screening buckets to excavators 2-70 ton and loaders 1-50 ton in weight. All include their new 3D screening buckets concept maximizing the quality/productivity and minimizing the fuel usage. Viper screening buckets have been developed to allow reuse and separation of different materials and fragmentations, providing in-situ usage of otherwise waste materials. Trench filling and padding, topsoil mixing/stabilization and biomaterial screening/aerating are amongst the typical screening applications.

The Viper screening bucket attachments are designed to be lightweight and provide easy changeover of attachments between base machines.

www.vipermetal.fi



Brokk updates 120 Diesel Mark 2 robot

The remotely controlled demolition machine manufacturer Brokk has updated its Brokk 120 Diesel Mark 2, believed to be the world's smallest diesel-driven demolition robot. This compact machine, which can operate independently for over eight hours, was launched at the recent World of Concrete show.

The basic concept is its compact size at 780mm wide, allowing it to enter any standard door opening and makes it easy to manoeuvre in tight spaces. Its low weight of 1.2t allows working on weak floors and makes it easy to transport.

Diesel powered it has a minimum of eight hours of operation without refuelling, allowing it to work for a full shift. It includes a new design, upgraded headlights, added options for smarter integration of additional attachments, and improved serviceability.

The Brokk 120 Diesel Mark 2 has been designed for use in a variety of applications. In the security and rescue and nuclear areas there is a need for a compact independent remotely operated vehicle with enough power to carry out tough jobs. In the construction industry there is a need for easy movement and relocation of the machine between work sites. And in the process and underground industries there are areas where the use of a power cable could be an obstacle or where mains electrical power is not available.

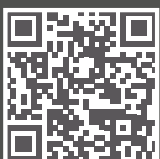
"The Brokk 120 Diesel Mark 2 highlights our commitment to bring upgrades and improvements in our products to our customers at an industry-leading pace," said Brokk Group chief executive Martin Krupicka. "The Mark 2 version will bring even more productivity to the challenging situations where the Brokk 120 Diesel has already become such a popular machine."



LET YOUR GRINDER
DO THE JOB, WITH
THE NEW DSM 800RC



» REMOTE-CONTROLLED FLOOR GRINDER
POWERED BY SCHWAMBORN TECHNOLOGY!
SYSTEM SCHWAMBORN – ONE STEP AHEAD!



Made in Germany
www.schwamborn.com

 **Schwamborn**

...mit uns machen Sie Boden gut!

E-Z DRILL

launches hand drill dust collection cart

At the recent World of Concrete show the US concrete dowel drill manufacturer, E-Z Drill launched a dust collection cart for use with handheld drills.

The dust collection cart gives contractors who use handheld drills an effective way to meet OSHA dust requirements. Operators also benefit from enhanced ease of use when moving the drill and can simply set the drill on the cart and go.

The dust cart collection system weighs 97kg and uses the same air compressor as the drill, requiring just 1.1m³/min for operation. It collects dust directly from the drilled holes and stores it in a collector.

E-Z Drill designed the cart with 6m of 50mm dust collection hose and a shroud that goes around the bit to ensure the dust is collected at the point of drilling, maximizing the amount of dust the system captures and reducing operator exposure. It also enhances overall site safety by preventing respirator issues. The cart features two 600mm filters to trap dust particles.

www.ezdrill.com



DEUTZ TO SUPPLY

Putzmeister with Stage V engines

The German engine manufacturer Deutz, has concluded a long-term agreement to supply the German Putzmeister Group with diesel engines for its floor screed and concrete pumps, for progressive launch from 2017. Putzmeister is a multinational manufacturer of specialist machinery based in Aichtal near Stuttgart. It is taking this step in order to prepare its product range for the EU Stage V emissions standard, which will apply from 2019. For its floor screed pumps, Putzmeister has chosen the compact DEUTZ TD 2.2, which will replace the currently installed DEUTZ D 2011 engine.

"Deutz's world wide service network provides exactly the right support for our machines," said Putzmeister chief executive Matthias Ruppel. "The Deutz engine portfolio covers both the highly regulated European market and numerous other regions, some of which have widely differing legal requirements. This allows us to serve every market while working with just one engine supplier, reducing costs and complexity."



dsb innocrush: giant output is guaranteed

In recent years, the Upper Austrian company has become very established in Switzerland. Meanwhile, dsb innocrush is not only known to insiders as the leader in the 30 to 50 tonnes class. Recently, an innocrush 35 with screen box is2 was delivered to W. Kressig AG in Switzerland.

"With many years of experience and our motivated, competent employees, we offer optimal solutions for every customer. We are constantly investing in modern and efficient machines. The innocrush 35 with screen box is2 and refeed-/stockpile conveyor, which has been now supplied appropriate to our corporate identity, supports our work optimally. I appreciate the high quality and easy handling of the plant. A crusher has to be ready for use immediately. Low operating-, service- and maintenance costs have top priority for me," says managing director Alain Kressig.

The innocrush 35, which is powered by a generously dimensioned, high-torque CAT C9.3 engine, achieves a performance up to 350 t/h and leaves no wish unfulfilled.

The machine width with installed slewable refeed-/stockpile conveyor is less than 3 m and can be easily transported. A special USP is the innodrive. The unique direct drive without clutch is maintenance-free and guarantees 100% power transmission.

The screen box is2 with extra-large screen area is the optimal supplement to the dsb-plant. It completes the crusher with a simple add-on into an adequate screening machine, which does not need any additional drive and ensures the highest screening performance.



MERIT'S new saw

The US company Merit Engineering and Equipment added the Merit-AWD-65HP-G steerable all wheel drive saw at the recent World of Concrete show. With patent pending it provides superior control and ease of operation when cutting uphill, downhill, sideways on a grade, and radiuses.

Also debuted at WOC was a new line of spark ignited gas flat saws. These models are an option for meeting EPA and Carb emissions requirements while maintaining horsepower, torque and performance and saving money.

www.meritsaw.com

Chicago Pneumatic expands generator range

Chicago Pneumatic has expanded its range of portable generators with the addition of four new CPPG inverter models, for contractors who require a source of AC power below 3kW. CPPG inverter generators are available in 50Hz and 60Hz variants, with the CPPG 2i / CPPG 2iW and CPPG 3.5 / CPPG 3.5iW providing nominal power outputs of 1.6kVA and 3kVA respectively. CPPG inverters come equipped with a recoil starter and are available with petrol engines and four litre or 10litre fuel tanks.



HARTL CRUSHER
hartl-crusher.com



**"WE UNDERCUT ANY
PRICE OF COMPARABLE
BUCKET CRUSHERS"**

Dominik & Alexander Hartl

bestprice@hartl-crusher.com

airtec VISTAFLOOR[®]

THE SMART TECHNOLOGY FOR SURFACE PREPARATION



MILLING / PLANING

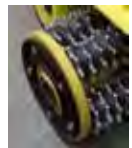
- RM-400 - 400mm working width
- Built for high production on concrete and asphalt
- Hydrostatic-drive



GRINDING/REMOVING



- RM-320 - 320mm working width
- Successful grinding/planing of concrete and asphalt
- Large variety of cutters
- Self-propelled



POLISHING

- BS-800 - 800mm working width
- Concrete surfaces
- Terrazzo, marble
- Unique patented planetary system



SAFETY GROOVING / SURFACE CORRECTION

- SM-320 - 320mm working width
- Where cars, people, airplanes and animals go
- The diamond-drum concrete shaver



All equipment with dust collection systems!

airtec

FOR SURFACE PREPARATION
www.airtec.ch - info@airtec.ch



New mini excavators from **CASE**

Case Construction Equipment has added the new C Series mini excavator line with six models ranging from 1.7t to 6t. These are the first products of the new range, which will be extended with additional models during 2017 and will be introduced to the US market at Conexpo.

"The mini excavator is an essential product line for construction businesses," said Case mini excavator product marketing manager Gaston Le Chevalier de la Sauzaye. "They account for the biggest industry volumes by far at 53,000 units for Europe, and the market is increasing each year. With the new C Series, we deliver what our customers tell us they need most from this product line is outstanding productivity, comfort and safety."

The C Series mini excavators are the first products resulting from the brand's strategic alliance with HHI. The 5.7t and 6t models are produced at one of the partner's facilities, while the Case excavator hub in San Mauro, Italy, assembles the four new models below 5t for markets worldwide.

The CX17C and CX18C are the ideal machines to work in confined spaces. They feature hydraulically retractable tracks with inner routing of hydraulic hoses.

When the tracks are retracted, the machines are less than 1m wide and the CX17C has a zero tail swing.

The hydraulic flow in both machines delivers 5% higher digging efficiency than the previous models. The auto shift-down function on the CX17C, which optimises traction and speed and the joystick controlled auxiliary hydraulics, enable the operator to get the job done even faster.

The 2.6t and 3.7t CX26C and CX37C models are available with a choice of long and short arms, with a maximum dig depth of 2,645mm and 2,420mm respectively for the CX26C, and 3,440mm and 3,135mm respectively for the CX37C. They are also available with additional counterweights and rubber tracks. Steel tracks are also available on the CX37C.

The CX57C and CX60C are the two models at the top of the new range. The 5.7t and 6t models feature the best instrument cluster on the market with a multi-colour, 145mm LCD touchscreen. The convenient hands-free system with USB and AUX ports, SD card reader and 12V power outlet make it easy to integrate most modern mobile devices.



Blastrac's new shot blaster

Blastrac's new portable, lightweight shot blasting system 1-8DM is ideal for smaller jobs, such as residential garage floors, pool decks, and small industrial floors. It runs on single phase common power and has a manual travel speed and 222mm blast pattern.

This versatile small machine can be used as a complementary unit for larger jobs, and for the preparation of concrete prior to wood floor installations or applications, such as overlays, paint, or coatings and for decorative uses.

Makes close-up work next to walls and other vertical protrusions simple and can blast close to front walls and edges when side magnet seals are removed. Shot pattern reducers are available in 100mm, 125mm and 150mm.

The Blastrac 1-8DM can prepare, strip, clean and profile in one easy step. There is no rinsing or drying time as with chemical acid etching, and the profile provides a better surface for coating adhesion.

www.blastrac.com

GSSI offers **LineTrac**

Ground penetrating radar equipment manufacturer, GSSI has announced the availability of LineTrac XT, an accessory to the StructureScan Mini XT. The combination of the StructureScan Mini XT and LineTrac XT helps locate specific power sources in concrete, including AC power and induced RF energy present in conduits. The new LineTrac XT accessory combines radar data with a magnetometer, delivering accurate, dependable, and repeatable performance.

LineTrac XT includes a number of features that make it easy to identify target utilities, including easy integration with StructureScan Mini XT, seamless data fusion with GPR data, a 50/60Hz electro-magnetic sensor used to locate powered conduits, and a IP-65 rated enclosure. LineTrac XT detects extremely low amplitude AC signals associated with difficult to locate conduits. The LineTrac XT accessory complies with all



applicable FCC, RSS, RoHS, and CE requirements. It can operate in temperatures ranging from 20°C to 40°C.

The StructureScan Mini XT now comes equipped with the LineTrac XT software package. Users simply insert the LineTrac XT into the front accessory port, select the LineTrac XT module, and choose between 50Hz or 60Hz.



DIAMOND SYSTEM
for FLOOR RESTORATION & MAINTENANCE

SIMPLE. EFFICIENT. VERSATILE.

polished concrete • natural stone • overlays • VCT



With ShinePro, you can keep floors bright and clean over many years. Repair traffic patterns, low gloss and stains before they become more costly problems. Use in-house maintenance crews or existing maintenance contractor to do light restoration work, without the need for special equipment or training, and thus, minimize the need to hire specialized contractors to do expensive refurbishing work.



Manufactured by
SUPERABRASIVE

www.superabrasive.com



MOBYDICK helps contain contamination

When Ahrens Contracting acquired the contract to demolish and remediate the abandoned and polluted Carter Carburettor site in St Louis, Missouri, US, they turned to MobyDick to contain the contamination.

After the plant stopped production in 1984 it became an EPA Superfund Site. Among other chemical contaminants, polychlorinated biphenyls and trichloroethylene impacted the soil and ACM was found in the buildings. Recycled concrete from the demolished buildings was used as fill for the significant quantity of extremely contaminated soil that was removed from the site and shipped by rail to landfill out of state.

Vehicles exiting the exclusion zone had to be decontaminated by a well-defined EPA procedure. Ahrens' choice of MobyDick equipment was a great asset to achieving its objectives that no dirt or dust got past the fence. The wheel wash was the last stop and the roads were kept clean. The MobyDick dust control cannons worked well containing the demolition and the concrete recycling crushing generated dust.

When searching for equipment to help meet the strict EPA contaminant control guidelines for the site, Ahrens Contracting turned to the wheel washing MobyDick brand from Frutiger.

Ahrens needed to ensure no chemicals of concern left the site on the wheels or chassis of

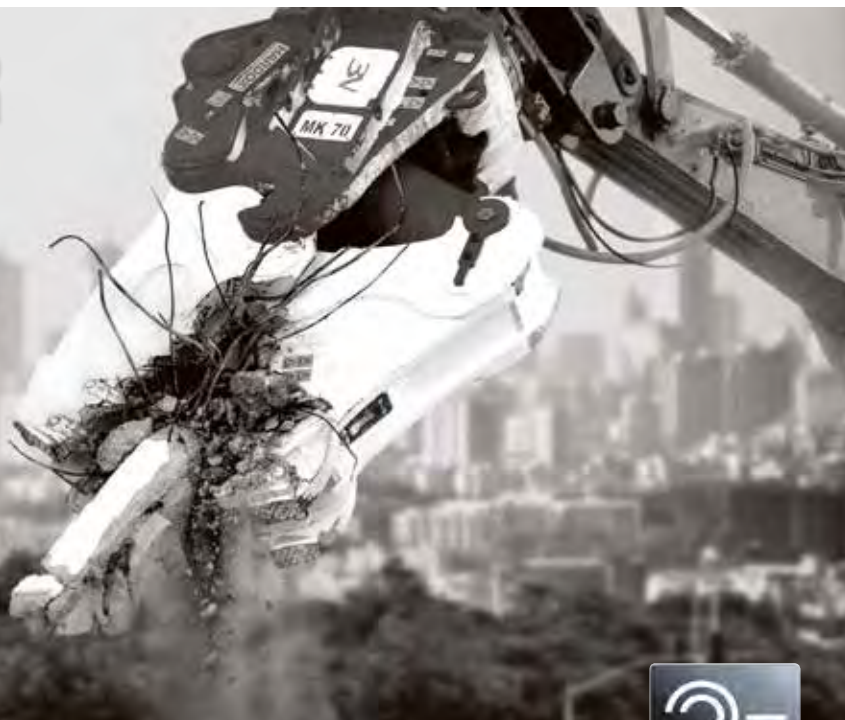
trucks leaving the project. The MobyDick ConLine Model 400MC surface mounted wheel wash system Ahrens purchased automated that process. "The faster solution was a boon," said project manager Ted Ahrens. "It saved us overhead on cleaning tyres, and is safer for labourers than holding a fire hose. It frees them up for other work. The MobyDick tyre wash was assembled in two days and the company sent a field service technician to site to supervise, train and assist."

As the project outgrew Ahrens' existing fleet of dust control cannons, the company again reached out to Frutiger to acquire two of the new MobyDick dust control cannons. "Automatic cannons with wireless remote control lets labourers and operators stand safely back from the demolition. Equipment operators like being able to move them from within the cab to handle rapidly changing wind conditions and work at varying elevations," said Ahrens.

He also praised MobyDick as a whole, citing a high level of satisfaction with his company's MobyDick ConLine as a factor in the purchase of the dust control cannons. "We had good results with the tyre wash and it's nice to deal with one company that can offer multiple products and stand behind those products. The MobyDick Dust Control Cannon performs very well," said Ahrens.



**I DO NOT FEAR
CHALLENGES.
I DO WHAT
I WANT.**



MK Series

All shades of power,
one invincible **support**.



www.trevibenne.it

CELEBRATE WITH US
25 YEARS
OF LEGENDARY SERVICE





882-6663

877-9873-72

74-663-62

09-982-73

882-6663

877-9873-72

IMAGINE WHAT'S NEXT.

Register today to get the ultimate view of where construction is going.

Imagine less downtime. Imagine being more efficient. Imagine seeing what's next from over **2,500 exhibitors** spread out over **2,500,000 square feet**.

Imagination becomes reality in Las Vegas on March 7-11, 2017—and if you make your reservation right now, you can ensure your spot at this huge event... and save!

Get the special \$149 rate (and save up to \$100) by registering early at www.conexpoconagg.com.



**IF IT'S NEW,
IT'S HERE.**

March 7-11, 2017 | Las Vegas Convention Center | Las Vegas, USA



Something NEW!

MEP Breaker

It is not often that the demolition industry is offered a new tool for efficient crushing and breaking in a wide variety of applications. The MEP Breaker series of demolition tools is a new approach to solve a multitude of needs, e.g. by a revolutionary patented launch system and a simplified hydraulic system.

Tested applications include:

Reinforced concrete structures

Bridges, arches, vaults, slabs, and other massive concrete structures. In most of these applications the MEP Breaker is used for primary breaking.

Boulders and stones

The same basic process is applied when breaking large boulders above the ground and large underground stones.

Steel slag and cast iron

Breaking steel slag and pieces of cast iron to sizes applicable for smelting.

Other applications

Compacting embankments is a further application as well as crushing of ground frost.

The MEP Breaker series includes three models. They all can be mounted on a 45t excavator. MEP Breaker is, indeed, a versatile piece of machinery. You get further information by contacting the manufacturer below.

MEP Steel

Address: Metallitie 1, FI-33470 Ylöjärvi, Finland

Phone:

+358-3-348 5566

Web: mepsteel.fi

E-mail:

petri.kiiskinen@mepsteel.fi



Vacant for more than two decades, a 15 storey former hotel and later residence for the South African Police Service, was demolished by implosion last October. With other properties only half a metre away, the undertaking was not without its complexities. Contractor Jet Demolition pulled it off in 2.5s on a Sunday morning prior to the site being cleared for another development. PDi's Kevin Mayhew reports.

A CAPITAL BLAST

The HG de Witt building in central Pretoria, South Africa's national capital, also referred to as Tshwane, comprised steel reinforced concrete columns and walls with lintel and block floors and clay brick internal walls. It had one basement level and 14 floors above ground.

Implosion was decided on in preference to top-down demolition of the main structure because of time, cost and safety considerations. Mechanical removal of the eastern 1-3 bays to provide fall space for the implosion rubble would have compromised the structural stability and would have required installation of extensive additional bracing on each floor of the building, also undesirable because of time, cost and safety concerns.

"The site was extremely tight for an implosion," said Jet Demolition managing director Joe Brinkmann. "The east wall of the building was less than half a metre from the parking garage of the adjacent building, while the west side of the building formed the edge of the pedestrian pavement. Low-rise structures connected to the north and south of the main building were demolished mechanically prior to the implosion."

To avoid flying debris damage, up to five different layers of redundant blast protection were placed over charged columns and walls, fixed as secondary fragment catch curtains on the exterior of blast floors, and positioned over windows of nearby buildings.

Specifically to avoid damage to the delicate façade and large stained glass windows of a nearby church, a 12m high curtain hung midway between it and the imploded building. This protected it from small particles contained within the implosion wind generated by displaced air as the building collapsed.

It was decided to design a precision centre drop implosion of the building with an east mobilisation bias. High-strength, high-elongation steel tendons were incorporated across the building from east to west to bolster the effective tensile strength and stretch of each floor. The installation of two steel columns extending three storeys upwards from the basement served to strengthen the eastern spine of the building and to

preclude any kickback action to the east. These design features achieved the necessary collapse behaviour and the formation of a suitably shaped debris pile that did not affect the adjacent properties. This was a huge challenge in view of only one basement level to accept the collapsing rubble.

The structural design and layout of the building was such that very limited pre-weakening could be done,

requiring extensive sequential blasting on six floors to achieve the desired collapse behaviour. An electronic initiation system was used to obtain the desired sequencing and time delays when detonating the 528 drill holes up to 4m long over a time of 2.5s. In all, 82kg of Watergel and detonating cord based explosives were used to break the concrete structural elements that were 150mm to 620mm thick.





D-Drill

ASSISTS IN X-RAY INSTALLATION

In Wales the UK concrete cutting specialist D-Drill has assisted in the installation of new X-ray equipment at the Royal Gwent Hospital, in Newport. Working as the specialist subcontractor to Davlan Construction, D-Drill had to form a trench in a floor slab as part of the project.

D-Drill created the 6.3m long trench to enable a reinforced concrete ground beam to be put in place for the X-ray equipment as well as form a 2.3m long channel for the electrical tray. They used stitch drilling and completed the work in just two days, ensuring minimal disruption for the hospital.

"We were delighted to help install the new X-ray equipment for the patients of the Royal Gwent Hospital," said D-Drill representative Gary Robinson.

"We would normally have used a wall saw, however we decided to use stitch drilling as there was no 3 phase mains electrical supply and we only had a temporary power supply of 240/110v. This proved the best option for the hospital, as there was no vibration from the drilling, which kept the noise to a minimum.

"We used two Weka DK32 diamond drills, two 5kVA transformers and a wet vacuum to clear up the slurry when drilling. We stitch drilled the outer edge of the 6.3m trench and then stitched this into smaller blocks for removal from the working area. We also formed a channel into the floor screed for the electrical tray using the same method. We were very happy with how the job went and the client was also pleased."

www.d-drill.co.uk

Hitachi ZX300LCN-6 takes SIRO to new heights

The Portuguese recycling company Leal & Soares has introduced a new Hitachi medium excavator ZX300LCN-6 to its production process to move 100,000m³/week of compost material at its site in Mira, west Portugal. L&S is also the owner of the brand Sistemas Integrados de Reciclagem Orgânica (Integrated Systems for Organic Recycling) that produces compost from forest residue.

The Zaxis-6 excavator was supplied by dealer Moviter with a larger than standard 3m³ bucket. This is due to the light density of the materials, which are stacked in numerous piles. "We considered other brands, but after testing the Hitachi for a week, we were convinced that this was the best machine," said SIRO chairman Carlos Soares. "We have also had a positive experience with a used Hitachi excavator, which has given us many years' reliable service.

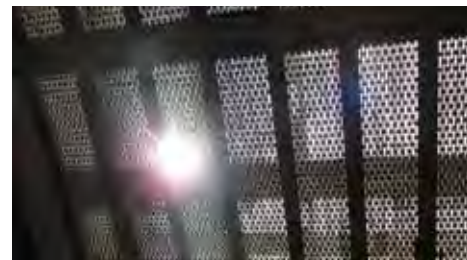
"We selected the ZX300LCN-6, as we felt that the volume of work was suitable for this size of machine. The most important criterion was the capacity and the new machine will be more productive and fuel efficient and is doing exactly what it is supposed to and helping us to meet our objectives."



SANDVIK roves screening efficiency

The screening efficiency of NCC Roads Nyrand Grusgrav quarry in Swebölle, Denmark, has been improved by the addition of Sandvik's WX7000 screening media. The anti-blinding polyurethane screening media has increased production capacity, with enhanced material separation, reduced final product fines by 100%, and improved operational lifetime.

The WX7000 solution is a tensioned soft polyurethane screening media with dam bars and punched holes designed primarily for fine screening in difficult conditions. Its design solves blinding problems providing screening efficiency in the final stage of screening. The wear life of the media is up to 10 times longer or more in many applications when compared with traditional wire mesh, thereby significantly lowering operating costs.





TOTAL CONTROL SYSTEM SOLUTIONS

Built-in wireless communication interfaces of the Epec 6000 series brings industrial internet to the mobile machinery

ADVANCED AUTOMATION SOLUTIONS FOR MOBILE MACHINERY



Easy-to-use software development environment and ready-made software components for optimizing customer's time-to-market.



EPEC 6112 DISPLAY UNIT

BRINGS THE MOST MODERN COMPUTING, SOFTWARE AND DISPLAY TECHNOLOGY TO THE CABIN

- RUGGED 12" DISPLAY UNIT FOR MOBILE MACHINES
- HIGH CPU PERFORMANCE
- CODESYS 3.5 VISUALIZATION
- TWO ANALOG CAMERA INPUTS
- OPTIONAL GLOBAL SIM
- WIDE VIEWING ANGLES AND BRIGHT DISPLAY PANEL
- FULLY ENCLOSED ALUMINUM HOUSING
- CAPACITIVE TOUCH SCREEN



EPEC 6100 REMOTE ACCESS UNIT

HIGH-PERFORMANCE AND RUGGED TELEMATICS UNIT SPECIALLY DESIGNED TO THE INDUSTRIAL INTERNET SOLUTIONS

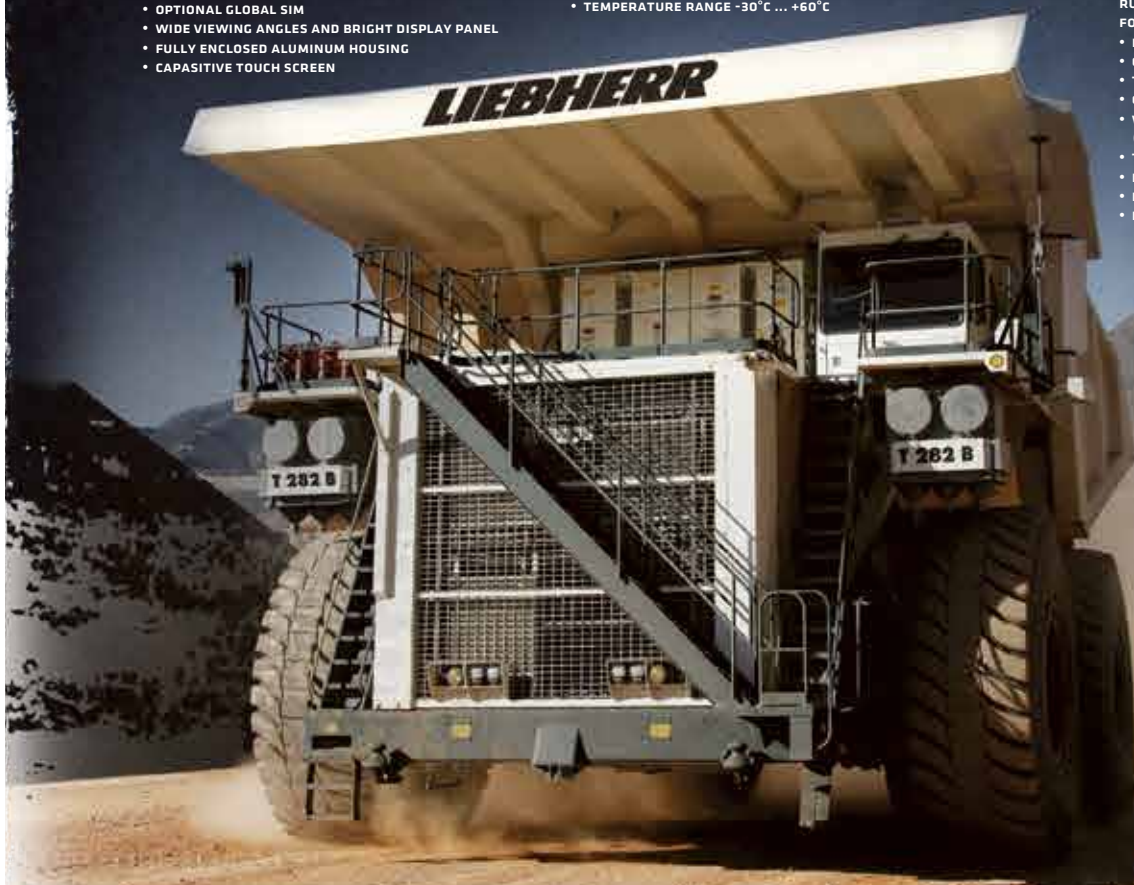
- BASED ON ARM CORTEX A9 DUAL-CORE PROCESSOR
- MEMORY: FLASH 4 GBYTE, RAM 1024 MBYTE, MRAM 512 KBYTE
- BUILT-IN 2G/3G/GPS/GLONASS INTERFACE
- OPTIONAL GLOBAL SIM
- TEMPERATURE RANGE -30°C ... +60°C



EPEC 6107 DISPLAY UNIT

RUGGED AND POWERFUL 7" DISPLAY UNIT FOR MOBILE MACHINERY

- HIGH CPU PERFORMANCE
- CODESYS 3.5 VISUALIZATION
- TWO ANALOG CAMERA INPUTS
- OPTIONAL GLOBAL SIM
- WIDE VIEWING ANGLES AND BRIGHT DISPLAY PANEL (800 NITS) WITH EXCELLENT SUNLIGHT READABILITY
- TEMPERATURE RANGE UP TO -30°C ... +70°C
- RESISTIVE TOUCH SCREEN
- FULLY ENCLOSED ALUMINUM HOUSING
- PANEL MOUNTING VERSION ALSO AVAILABLE



CONTACT:

SALES@EPEC.FI

Dehaco Dust Control Units

TERA fitted with CC Watertank and Wheel loader frame



Also available: Automatic quick coupler systems



Dehaco B.V.

Kruisbaak 25
2165 AJ Lissersbroek (NL)

☎ +31 (0)252 - 41 79 50

@ info@dehaco.nl



SIN BIN SPIRITED AWAY

Second to football, the sport of rugby is spectacularly popular in South Africa. One of its most internationally cherished venues is Loftus Versfeld Stadium in South Africa's capital, Pretoria, also known as Tshwane. With the surroundings of this venerated combat venue about to be rejuvenated, some tender loving care was required for one particular building, and demolition came to the rescue. PDi Africa editor Kevin Mayhew blows the whistle.

The Blue Bulls Rugby Union, overseers of Loftus Versfeld Stadium and the local provincial rugby team known as the Blue Bulls, sold the land adjoining the stadium to equal partners, property developer Abland and development company Pivotal Property Fund. Abland and the BBRU agreed on a mixed-use office and retail development, Loftus Park that would benefit sport in the long term.

However, a little nostalgia got into the mix. Behind the north stand of the stadium was the Sin Bin, a pub opened on game days as a gathering area before and after great contests for a pint or two. It had originally been constructed as the clubhouse for the local tennis club over 60 years ago before eventually becoming the watering hole for rugby on game days.

The sin bin reference is not only to it being a place of imbibing sinful alcohol, but also refers to the area during any 80min rugby game reserved for yellow or red carded players to sit out their penalty time for an extreme infraction.

Change to the area surrounding the stadium was okay, but the Sin Bin had to remain. In South Africa any building over 60 years old is protected under national, provincial or municipal law, but it was also part of the

history and folklore of this proud rugby franchise.

So what to do?

Three possibilities were presented to the Provincial Heritage Resources Authority Gauteng to preserve the building.

One was to suspend it over its traditional location, move it a few hundred metres away and then replace it back where it belonged in the new environment and spruce it up.

The second was to retain the building on an earth pedestal in the middle of the excavation site as the office parks, gymnasium and restaurant area took shape around it.

The third was to dismantle it tile by tile, brick by brick, truss by truss and store it in a safe place to be reassembled in pride of place for the rugby faithful and future users of the new park.

For structural, safety and financial reasons the third option got the nod and so the dismantling began. It took only a week, most of it at night to minimise annoyance for the surrounding residents or disrupting normal daytime commercial and school activities.

Presently what was a vibrant assembly area for rugby enthusiasts lies in a secret location awaiting resurrection as a feature piece of the stadium's adjoining Loftus Park.

Once in place in the embrace of modernity it will be renamed The Clubhouse, which will be a full restaurant and pub. To maintain the link with the days of old for the Loftus Versfeld faithful the relocated haven will contain an historical record of its past by way of a pictorial representation of its heritage, dismantling and then comeback.

Preservation of buildings in situ, or even moving them to other locations, is becoming common in South Africa as the country's heritage, manifested in buildings, potentially stands in the way of development to meet current and future needs. As with this decision compromises are reached and, ironically, modern demolition methods come to the rescue of preservation.

KOBELECO'S new arrival

Kobelco Construction Machinery Europe has announced the arrival of its latest version of the 50t excavator SK500LC-10. It incorporates many new detail changes, but is particularly marked for being designed to provide exceptionally low emissions and increased working performance to maintain unparalleled working efficiency.

"Kobelco's SK500LC-10 is a machine that has a deserved reputation for being an absolute workhorse. The recent changes that come with Generation 10 models add up to increased working performance for less running costs, an important consideration for customers and operators," said KCME product marketing manager Peter Stuijt.

www.kobelco-europe.com



Best practice for maintaining petrol-powered drills and breakers

Petrol-powered drills and breakers are designed for use on jobs located in remote areas where there is a need for operators to move around frequently. Therefore, the last thing a contractor wants is to get to a site in the middle of nowhere and find that the drill they have brought does not work because it has not been properly maintained. Downtime is costly, so following a regular maintenance regime will ensure improved uptime and prolong its life.

Chicago Pneumatic representative Gus Armbruster provides some tips for keeping the latest handheld breakers and drill in optimum working condition.

It is crucial the air filter is checked daily that it is not clogged and the operator should simply tap it to clean it. Also check that the tool shank is correct to prevent jamming. The only weekly maintenance tip is to check the lower reservoir that oils the tool shank.

Each month, the gearbox oil level should be checked when the drill is upright. Every three months it is essential to check that the nuts, bolts, screws, and hose fittings are tightened to the correct torque settings.

One of the most important maintenance tips is to ensure that the correct fuel is used. With CP's Red Hawk range, a high octane, low ethanol fuel should be used. When using a drill or breaker with a two-stroke motor, it is advised to check that the oil to petrol stays at a ratio of 2:1. If the machine has not been used for more than two weeks, it is recommended the remaining fuel is emptied and re-fill with fresh fuel.

We always recommend storing the machine in a standing position, after removing the working tool. If stored horizontally, the machine must be placed on the back cover.

Some motor drills and breakers require little attention in the maintenance shop, but there are a few things to avoid on site. For example, when using the Red Hawk Road breaker, a crucial thing to check is that the machine is equipped with the right accessory.

The Red Hawk Road weighing 22kg is the most powerful breaker in the CP Red Hawk range. Ideal for concrete and asphalt breaking and cutting, enough impact energy is delivered to handle silica-rich rocks and reinforced concrete. An additional tamping shank allows users to repair potholes and surface damage.

Designed for use on and around railway tracks, the Red Hawk Rail is ideal for tie tamping. By offering high frequency with less impact energy the Red Hawk Rail ensures that minimal damage is done to track ballast.

Completing the range is the Red Hawk Drill, offering a combined drill and breaker, ideal for light service applications. With a range of different working tools, the Red Hawk Drill is a universal tool that offers users working in remote locations an alternative to existing drills and breakers.

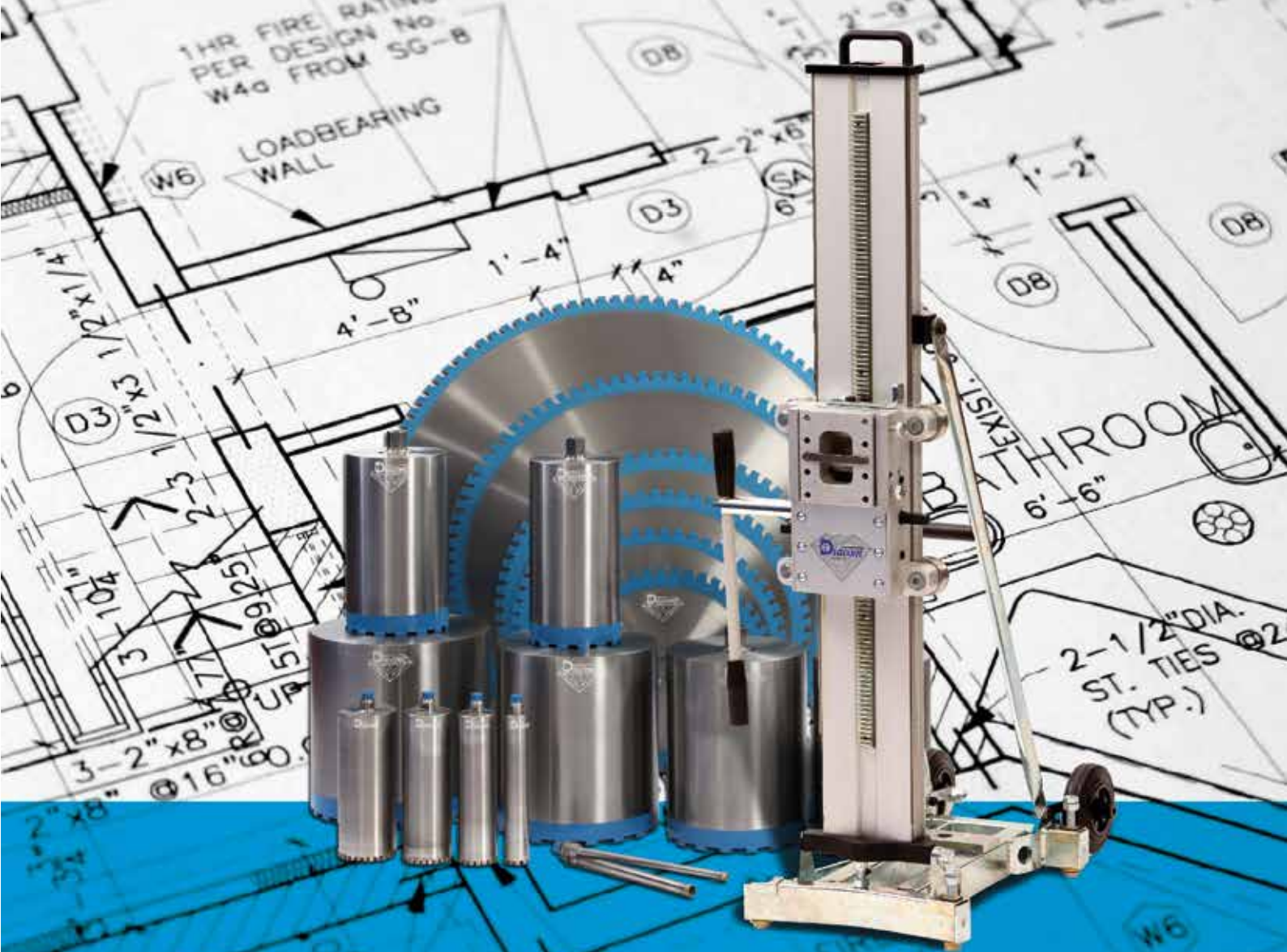
With 11 shank options and a trolley or carrying harness, CP has a range of accessories designed to make the Red Hawk range as versatile as possible.

Scanmaskin launches Luteus

Scanmaskin has developed a new hybrid tool Luteus that works well for dry polishing of a number of different floors and coatings. It can be used for dry polishing of concrete and plaster products and is also a good option for the renovation of terrazzo floors. Customer testing has shown outstanding results. Comments received include 'very easy to work with' and 'work with so many types of jobs'. As with all Scanmaskin tools, Luteus is very easy to apply to Scanmaskin machines, and has good durability and flexibility. Luteus is available in sizes 180mm, 210mm and 240mm and grit from 50 to 3000.

www.scanmaskin.com





DUTCH QUALITY TAKES YOUR PROJECTS TO THE NEXT LEVEL

High quality diamond tools by Diacom, manufacturer of diamond-segments, -corebits, -blades, coredrilling rigs and wiresaw machines. Produced with care and made with the best materials, combined with excellent service.

Diacom Trading B.V.
Bijlmermeerstraat 72
2131 HH · Hoofddorp
The Netherlands

t. +31(0)23 561 52 75
f. +31(0)23 561 52 73
e. info@diacom.nl



www.diacom.nl



HITACHI ZX19-5'S reliability for Polish contractor

A Hitachi ZX19-5 mini excavator has been selected to complete a challenging utilities project in southern Poland. Contractor FHU Elkop's decision to buy the Zaxis-5 model is a significant one in its history, as its first-ever

Hitachi machine. The excavator has proved to be the ideal choice owing to the confined space on site and the delicate nature of the work involved. "I made the decision based on positive feedback from one of my acquaintances, who

recommended the reliability of the ZX19-5," said Elkop owner Zbigniew Jedlina. "The machine is performing to a high standard, and I have been hugely satisfied with the assistance from Hitachi's dealer Tona.

Sandvik's new superior tooth jaw plates **ADD VALUE**

Scottish Highlands based company G.F. Job is one of the first companies to trial Sandvik's new superior tooth jaw plates. The initial test data from the G.F. Job trial on its Sandvik QJ341 crusher has been extremely encouraging with average output increased from 200t/h to 250t/h and wear rates increased upwards of 30%.

"In this particular granite application previous jaw plates have been ranging between 20,000-30,000 tonnes of crushed material and that's the life of the jaws," said G.F. Job plant manager Graeme Watt. "Since we went onto this new jaw we're up 50,000-55,000t for the life of the jaw. If you go into a limestone quarry, you'll get double, but this is a hard abrasive material."

In addition to the increased wear performance, G.F. Job has also seen benefits in fuel economy and an improved product shape, due to the new profile design of the superior tooth. "The new jaw plates create a better shape of product, but it's also crushing far more economically for us as well. It's reducing the load on the crusher, therefore we're creating better fuel economy whilst also reducing the physical hardship on the machine" said Watt. The unique design also makes the plates easier to turn over or replace, saving you time and money.

G.F. Job has an excellent mutual working relationship with Sandvik. They know that they can rely on the support they receive to keep their machines running at all times. "The backup for us is fantastic," adds Watt. "The machines are very reliable but the backup we receive from Sandvik is exceptional, it's what sells their machines."

Since the introduction of the superior jaw plates, G.F. Job has no hesitations in recommending them. "They benefit us all round," said Watt. "We are crushing far more, getting better fuel economy, producing a better product and they are lasting an awful lot longer. We will be looking to order additional sets for our other jaw crushers" concludes Graeme.

The Sandvik superior tooth jaw plates will be displayed at Conexpo.





ALL THE **EQUIPMENT YOU NEED** IN ONE HAND

SHOT BLASTERS, STEEL BLASTERS, GRINDERS, SCARIFIERS, FLOOR STRIPPERS & DUST COLLECTORS



GRINDERS | FOR GRINDING AND POLISHING LARGE FLOORS AND OTHER SURFACES



SCARIFIERS | TO LEVEL LARGE SURFACES OR REMOVE THICK COATINGS



SHOT BLASTERS | TO CLEAN AND RETEXTURE CONCRETE OR ASPHALT



FLOOR STRIPPERS | TO REMOVE OLD FLOOR COVERINGS

World's-first Battery-driven mobile crusher!



CONEXPO 7-11 March 2017
STAND : Gold Hall G-73813
Las Vegas Convention Center



 www.nakayamairon.co.jp
 overseas@nakayamairon.co.jp



Electric Driven Equipment Series



NE300J
JAW CRUSHER



NE250I
IMPACT CRUSHER



NE200C
CONE CRUSHER



NE514GA
SCREEN



DO YOU KNOW THE DRILL?

As technology moves forward, core drilling is becoming a fine art. Modern core drilling rigs are sophisticated yet easy-to-use machines offering operators numerous options for best results, even in the harshest environments. Andrei Bushmarin reviews the latest additions in the core drilling segment.

Weka updates drill motors

Germany-based drill motor manufacturer Weka has updated its DK42 and DK52 models with a host of new features. The latest DK42 E and DK52 E come complete with a keypad and LED display showing rotation direction, phase failure and load. If all three LEDs light up red, it means that full load is reached. If all three LEDs are flashing, the machine is overloaded by 50% and will switch off after approximately five seconds. An integrated electronic softstart function ensures smooth start of the three-phase motor.

New electronics prevent overloading and possible damage to the engine and gearbox. The direction of the spindle's rotation can be changed by using a phase-reversing plug. Thanks to the new electronics, cable housing is no longer required, which makes operation easier.

Also new from Weka is the Laserpointer CP30, which allows the operator to centre the drill perfectly. The centre of the hole is indicated by a point or a cross line. The CP30 switches on automatically when it is screwed onto the drill spindle. The Laserpoint is particularly suitable for inclined and wall-to-wall drilling. Powered by three replaceable batteries, the CP30 is sealed and low maintenance.

www.weka-elektrowerkzeuge.de



World's first portable battery-powered rig from US Saws

North America-based US Saws has launched the world's first portable battery-powered core drill. Designed for drilling with up to 200mm diameter core bits, the rig utilizes a 36V Metabo grinder to work in conjunction with the US Saws Core-EZ system. This solution allows operators to drill one 152mm hole through 203mm rebar reinforced concrete on one battery charge.

A double reduction gearbox permits the grinder motor to operate at peak torque and run at optimum efficiency. The gearbox has a safety clutch to protect the operator and the core bit. The unique cantering guide post eliminates the need for additional holes to be drilled to mount the rig so patching is not needed. The entire system breaks down without tools and fits into the rolling storage case. A slurry collection system is also available.

www.ussaws.com



Coring no longer messy with Hilti's new solution

Hilti has introduced the DD-WMS 100 slurry recycling unit that ensures users' autonomy and leaves jobsites clean. It is compatible with all Hilti DD tools and competitive brands. All the operator has to do is fill up the water tank and insert a filter bag. Water can be recycled up to seven times, which is an equivalent of 100litres of continuous water supply. The large wheels and ergonomic handlebar make it easy to move the DD-WMS 100 around on site.

Dust and slurry often lead to additional labour time spent on cleaning up, decreasing productivity. Hilti's range of water collection accessories for core drilling systems helps users save time and money. Once the filter is full and suction power starts to decrease, the patented multi-layer filter bags need replacing. Hilti's water management system has three modes of operation: recycling, vacuum cleaning and water supply. Having already been premiered in France, Spain, Belgium, Luxembourg and Portugal, the DD-WMS 100 will be introduced in German-speaking countries in May and the global launch completed by the end of the year.

www.hilti.com





Your Attachment Supplier



VISIT US AT



BOOTH \$5674

What makes Rotar unique

At Rotar we believe that people and machines can operate more efficiently. From this philosophy, we develop state-of-the-art demolition- and recycling attachments for hydraulic excavators and wheelloaders. Rotar is a manufacturer, which means that we are responsible for the development and production of our products ourselves. That is the only way to guarantee the well-known efficiency, quality and productivity of Rotar attachments.

Our employees treat your Rotar attachments as if it were their own. Our craftsmen always aim to develop the best products. That is why we are in constant communication with our customers and dealers, and we often develop products based on their experiences, suggestions and ideas. Once your attachment leaves the Rotar Factory, it bears our name. A name that represents a product with unique performance, produced by a unique team. Uniquely for you.

**Discover our products
at www.rotar.com**



GET THE **RED** CRUSH!



Tyrolit extends wet drilling range

Tyrolit-Hydrostress has launched the DRS162** system for wet drilling. Powered by a 2.5kW motor, the system accommodates up to 162mm diameter core bits allowing for a maximum drilling depth of 556mm. The drill motor and the stand complement each other and form a single unit. The pre-set speed and compact lightweight construction ensure easy handling. An integrated PRCD safety switch ensures maximum safety. Optional vacuum plate offers more flexibility in fixing the system.

www.tyrolit.com

Multitask drilling system from Eibenstock

Eibenstock's ETN 162/3 P drilling system can be used wet or dry, hand-held or stand-mounted. The 19A, 110V motor drills holes up to 162mm diameter in concrete, reinforced concrete, brick, block and stone. Electronic features include soft start, overheating and overcurrent cut-off, overload indication and constant speed. The motor includes a ground-fault circuit interrupter for operator safety during wet drilling applications. A safety slip clutch prevents jamming and allows hand-held operation. The 3-speed gearbox operates at a load speed of 0-510 / 0-1150 / 0-2500 revs/min. An integrated water swivel is built into the spindle for wet drilling.

For concrete dust extraction while dry drilling, the ETN 162/3 P can be connected to a vacuum with a standard hose connection. The vacuum port in the drill spindle, allows operators to capture dust from inside the core bit and maintain a clean work area. The drill also has a level indicator on the motor and handle. The ETN 162/3 hand-held core drill can be used in a rig-mounted mode. The stand measuring 995mm in length is adjustable to 45°. Optional accessories include cantering aid, portable water tank, water collection ring and core bits.

www.eibenstock.com





Mantovanibenne®



BIG TOYS FOR BIG BOYS

SaMoTer

VERONA, ITALY - 22-25 February 2017
HALL 6 - STAND C4



LAS VEGAS, NV
March 7-11, 2017
**CENTRAL HALL
C3-C5 C30332**



www.mantovanibenne.com

MANTOVANIBENNE S.r.l.

Via Augusto Righi, 6
MIRANDOLA (MO) - ITALY
Tel. 0535 615811 - Fax 0535 615830
sales@mantovanibenne.com



SCRAP'AIR *packs a punch*

Scrap'Air is a brand of pneumatic hammers manufactured and marketed by French company Mabi and suitable for wood treatment, surface preparation and demolition applications. PDi's Andrei Bushmarin reports on a recent visit to the company in Belfort.

In countries habitually called developed, it is small and mid-size enterprises that drive the economy forward. France, being one of Europe's biggest and most technologically advanced economies, has no shortage of small firms in every industrial sector. Mabi, which manufactures pneumatic tools, is a prime example of such a company.

Mabi way of surface treatment

Mabi was founded by Marc Bidaux in 1967. An electrician by education, he was 23 when he set up a workshop in Belfort with two colleagues. In its early days Mabi focused on offering solutions for protection of wooden structures. One of wood's worst enemies is a pest that destroys it from inside. At the time most pest control operators just sprayed the surface of timber with chemicals without any significant penetration. Some tried to use hollow rods to reach inside, but there was always a problem with backflow.

DUST CONTROL - ATOMIZATION - HUMIDIFICATION - CLIMATE CONTROL - FIREFIGHTING

SPRAYCANNON.
THE BEST DUST SUPPRESSION MACHINE IN THE WORLD!

SALES  RENTAL

SPRAYCANNON 15
SPRAYCANNON 25/35
SPRAYCANNON 45/60/75
SPRAYCANNON 90/105

WWW.SPRAYCANNON.COM

SPRAYCANNON 15
SPRAYCANNON 25/35
SPRAYCANNON 45/60/75
SPRAYCANNON 90/105

SPRAYCANNON 15
SPRAYCANNON 25/35
SPRAYCANNON 45/60/75
SPRAYCANNON 90/105

SPRAYCANNON 15
SPRAYCANNON 25/35
SPRAYCANNON 45/60/75
SPRAYCANNON 90/105

MB DUSTCONTROL BV - SALES@MB-DUSTCONTROL.COM - 0031(0)71-5610096

Emission Control 

CONEXPO-CON/AGG 2017
Las Vegas - Booth: S5877



Wheel Washing Systems Dust Control Systems



FRUTIGER www.mobydick.com

TopTec Remote Controlled Demolition Robots

SPEZIALMASCHINEN GMBH



TopTec Spezialmaschinen GmbH
Breithornstrasse 10
D-8185 München, Germany
Phone: +49 (0)89-427 205 50
info@toptec-germany.de
www.toptec-germany.de



Mabi's HQ and manufacturing facilities in Belfort, France.



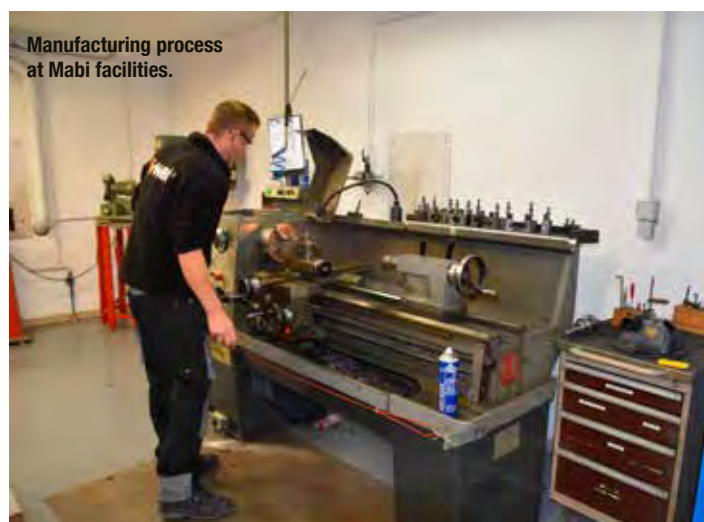
"Scrap'Air hammers are increasingly gaining traction with customers".



"Injectors and pumps for wood treatment are Mabi's core products".



Managing Director Olivier Bidaux, Export Manager Marie Montornes, Marketing Manager Aurélie Correy.



Manufacturing process at Mabi facilities.

Marc Bidaux designed a system with a special injector and a pump that allowed chemical agents to be injected inside wood without any backflow. This set-up could also be employed to eliminate subterranean termites under concrete slabs. The solution proved to be effective, and Mabi's wood treatment systems became a cornerstone of the company's business.

Meet Scrap'Air

In 1984 Marc Bidaux conceived an idea of a hand held pneumatic hammer that would make the work of wood treatment specialists much easier. Brand named Scrap'Air, the lightweight and ergonomically shaped hammers could perform diverse jobs such as wood peeling, asbestos removal and selective demolition.

The hammer line is divided in four groups based on power rating ranging from 15J to 35J. One of the hammers' highlights is a dual anti-vibration system. Anti-vibration is doubled by having one damper installed in the hammer's nozzle, while the other is integrated into the handle. Users can choose between three types of handle, short, medium and long, depending on the

job requirements. The machines come with a choice of 25 replaceable tools.

Kick-ass manager

A new chapter in Mabi's history began in 2001 when Bidaux's son Olivier, also aged 23 at the time, took over the helm from his father. With a personal motto 'nothing is impossible' and years of practice in kick boxing, he cut a no-nonsense managerial figure that would successfully guide the firm through numerous ups and downs, including the 2008 recession. His passion for sport was reflected in his choice of a public figure for Scrap'Air billboard advertising. David 'The Red Griffin' Radeff, a renowned kick boxer and a fellow Belfort native, posed in the promotional picture brandishing a Scrap'Air hammer. He took Mabi to the next level and under his management the company expanded its international reach and was awarded a number of national trophies including Lumières de l'innovation and Stars and Métiers.

50 years young and looking to the future

Mabi operates a 200m² workshop located in an industrial

zone on the outskirts of Belfort, where it manufactures, services and repairs its machines. Orders are dispatched from an adjacent 1000m² warehouse. With a staff of 13, Mabi is a team of multitaskers, whose main priority is building a global dealer network. Currently Mabi has 30 dealers worldwide, with 90% based in Europe. Mabi's Export Manager Marie Montornes, said that developing the US market is the key objective in 2017. As part of this strategy, Mabi will exhibit at Conexpo alongside its American distributor.

Although injectors and pumps for wood treatment are still Mabi's core product, Scrap'Air hammers are increasingly gaining traction with customers. They are particularly popular with asbestos removal contractors thanks to the construction that allows easy decontamination of the machine after the completion of work. To make Scrap'Air even more competitive, Mabi keeps tweaking and improving the design. In 2017, Mabi is going to introduce two handles, a 'D' handle allowing one-hand operation and a redesigned 'T' handle. With so many plans laid out and the company's 50th anniversary coming up in June, 2017 promises to be an eventful year for Mabi.

www.mabi.fr

Finally the grinding and polishing machine that does it all on its own!

- Automatic grinding of the whole working surface
- Automatic planetary lifting with remote control
- Automatic swinging function
- Automatic reverse
- Automatic advancement
- Automatic overlap
- Great driving power
- Precision edge grinding
- Extreme maneuverability



VIDEO



Klindex is the choice of top flooring professionals.

Floor grinders • Dust extractors • Diamond tools • Burnishing machines • Chemicals • Floor Solutions





MANUFACTURER OF DIAMOND TOOLS AND MACHINES

a professionals choice

made in Holland

Modular drill stands for the professional
CNC PRECISION



NEW TECH drilling
EXTREME FAST IN IRON



SPECIALIZED IN
HOLLOW CORE SLABS
PRE STRESSED CONCRETE



*

DRILLING

*

*

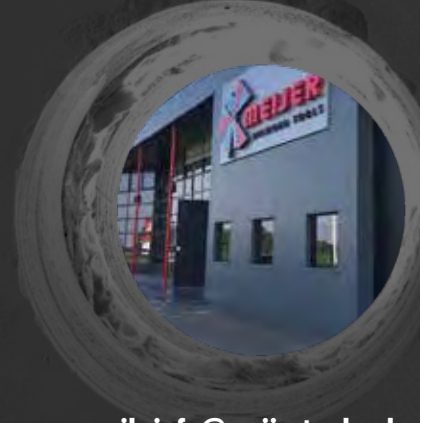
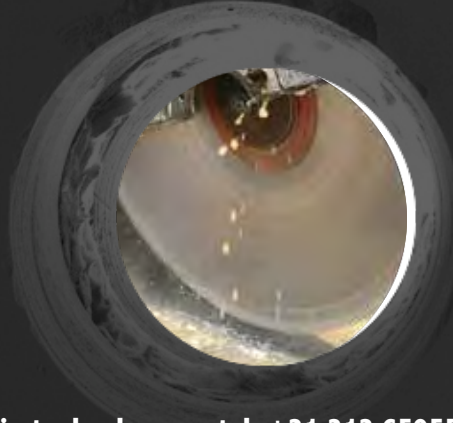
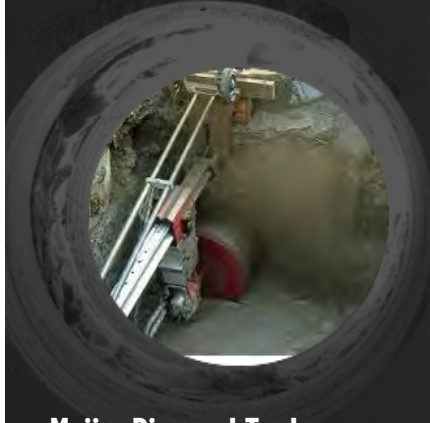
SAWING

*

*

FACTORY

*



Meijer Diamond Tools

www.meijertools.nl

tel: +31 313 659555

email: info@meijertools.nl

GERMAN CONCRETE CUTTING SHOW

The German three-day concrete cutting exhibition will be held on 23-25 March 2017 at the Sauerland Star Hotel Convention Centre in Willingen, Germany. In total 52 exhibiting companies have registered for the show presenting their latest concrete cutting technologies in

an area covering 1,200m². More than 1,800 visitors attended the exhibition in 2014, and surpassed the first edition in 2011 with 1,600 visitors. The number of visitors is expected to be even higher this year.

www.bebosa.com



DDR Expo 2017

MB Dustcontrol, Caterpillar, Dynaset, Keestrack, Arvi, Atlas Copco, Demarec and Liebherr are some of the companies that have confirmed their participation in the Demolition, Decontamination and Recycling EXPO 2017 to be held 14-16 June at the Place de Belgique 1, 1020 Brussels, Belgium. DDR Expo will unite the main decision makers in the European industry for a three day conference programme, covering the major challenges the industry is facing. The main players in the demolition, decontamination and recycling industries will be meeting and some have already booked their place.

The DDR Expo 2017 aims to become the key event where associations, contractors, EC officers and related stakeholders can meet, discuss, and work together on the development and future of the industry. It has the support of institutional partners Caso, the Flemish Construction Confederation, Federation Internationale Du Recyclage, the Concrete Initiative, Metals for Buildings and European Aggregates Association. These institutions will be participating at the event and sharing their experiences and knowledge.

The European Demolition Association is working with the European Commission to organize a plenary session at the trade fair and will cover some ongoing projects of the European Commission through its DG Groups. There will also be a presentation and a round table, formed by experts.

The DDR Expo 2017 offers the opportunity of participating in its technical programme through presentations related to construction and demolition management or recycling. The trade fair is calling for papers on projects, case studies and initiatives. The registration to the DDR Expo 2017 is free, but mandatory and has to be done using the form on the trade fair's website.

www.ddrexpo.com

Bauma Conexpo India underlines a turnaround

Bauma Conexpo India, which took place at HUDA Ground in Gurgaon, Delhi from 12 to 15 December 2016, indicated signs of a turnaround in the Indian market for construction machinery, as there were more visitors and business transactions than at the previous show in 2014.

More than 31,000 visitors and 647 exhibitors, including 57% of international companies from 30 countries, came to the fourth International Trade Fair for Construction Machinery, Building Material Machines, Mining Machines

and Construction Vehicles, which occupied a total of 150,000m².

"I am pleased that positive developments in the Indian market were noticeable at Bauma Conexpo India 2016. Exhibitors made some very good contacts and in some cases reported having sold machines directly at the fair. For us as the organizer, this feedback is more than gratifying and confirms that Bauma Conexpo India is perceived as an important platform by the market," said bC Expo India chief executive Igor Palka.

Bauma China 2016, the 8th International Trade Fair for construction machinery, building material machines, mining machines and construction vehicles, was held between on 22-25 November at the Shanghai New International Expo Centre.

Against a backdrop of economic slowdown and ongoing change and modernization in the industry, Bauma China 2016 attracted more than 170,000 visitors from 149 countries and regions. "Bauma China 2016 received a positive visitor response," said Messe München Managing Director Stefan Rummel. "With 14 years of development, Bauma China once again underlined its leading role in Asia. It has provided participants with good opportunities for industry communication and exploring product innovations, market trends and possible solutions despite the current uncertain situation."

"The success of the exhibition reflects the confidence of the exhibitors worldwide towards the Chinese economy as well as the world economy. It is beneficial to the faster, healthier growth of the construction machinery industry," said China construction machinery association chairman Jun Qi.

After China, the top ten visitor countries and regions were Korea, Russia, Malaysia, Thailand, India, Japan, Singapore, Taiwan, Indonesia and Australia, in that order. "This year the results are really good. Apart from domestic customers, we made contacts with clients from overseas markets like Australia, Korea, Thailand, Singapore, Malaysia, Dubai and Russia, and received many orders," said Bauer Equipment Group marketing manager Michael Minsky.



New opportunities against the odds at BAUMA CHINA

Bauma China 2016 occupied the grand exhibition area of 300,000m² at the Shanghai International Expo Centre. It attracted 2,953 exhibitors from 41 countries and regions, which is in line with the last show. Of the 2,953 exhibitors, 70% came from China. There were about 45% new exhibitors. In particular, many large shield machine manufacturers participated for the first time. "This is the first time we have taken part as an exhibitor. Bauma China is a wonderful platform for exhibition and communication. We are satisfied with

the results," said China Railway Construction Heavy Industry brand publicity department senior brand manager Hongwei Tu.

Exhibitors from outside China also made good use of this event to showcase their products and technologies. This Bauma China featured seven national pavilions from Germany, Italy, Korea, Spain, Turkey, the UK and the USA.

The next bauma China takes place at the Shanghai New International Expo Centre from 27-30 November 2018.

NEW COMBICUTTER CC 7000, a reliable partner for heavy demolition

In the new CombiCutter CC 7000, suitable for carriers of 58 – 85 t, stability and durability are enhanced by an upgraded design, making it a reliable partner at the toughest demolition sites.

The most notable design changes compared to the previous CC 6000 are wider and more robust bearing points and bushes for the main bolts and cylinder bolts, an optimized main body and jaw design, and hard facing.

The CC 7000 is a versatile multi-purpose tool for a range of different tasks. It has a selection of easily changeable universal jaws for concrete breaking, with a jaw opening of 1,400 mm and a crushing force of 180 t, and steel cutting jaws, with a jaw opening of 750 mm and a cutting force of 205 t.

The two cylinder concept delivers virtually constant closing force, and integrated speed valves shorten the working cycle time.



Positioning is easy thanks to the 360° endless hydraulic rotation drive. Exchangeable blades and teeth simplify maintenance.

www.atlascopco.com



SCHWAMBORN'S adds remotely controlled grinder

Removal of layers, subsurface preparation, grinding and polishing of floors have always been strenuous and fatiguing tasks. Machinery weighing up to 600kg needed to be moved by pure muscle power over floors. However, Schwamborn's DSM 800RC ensures that the machine does the grinding and be accurately positioned by remote control.

"With our more than 80 years of experience, continuous communication with our customers and, no less important, the ingenuity and inventiveness of our employees, we don't simply embrace challenge. We regard ourselves as an innovation engine in this sector," said Schwamborn managing director Eckart Schwamborn. "We aim to offer a perfect solution for practically every detailed task in floor treatment and care."

The spectrum of solutions range from specific solutions, such as polishing of concrete surfaces and the removal of coatings with special tools, to solutions that make machines faster, longer lasting, more efficient or simply easier to use. A new milestone has been reached with the new remotely controlled DSM 800RC grinder for large surfaces that offers considerably enhanced operator comfort and a high level of productivity. The ETX Duo tool holder, a versatile selection of tools and clear display information, ensure that surface quality is uniformly high, tool changes are more rapid and machine performance is achieved. Its uses range from subsurface preparation and the grinding and polishing of industrial natural stone and terrazzo floors to the removal of coatings and fillers.

Rockster Demo in China

On 11th January Rockster held a Demo Show in Chengdu, China, attended by around 80 dealers and customers from all over the country.

The show started with a historical and technical presentation by Rockster chief executive Wolfgang Kormann followed by a demonstration of an R900 impact crusher combined with the RSS514 scalper for recycling construction waste. The material was fed into RSS514 and separated into three different sizes of 0/32, 32/70 and over 70mm. The material over 70mm was fed into the R900 through the RSS514's main conveyor and into the final product size of 0/32. The new trommel screen RTT720 was also presented and prepared to process top soil.

Besides the introduction of the new products, the continuity, stability and high efficiency of the working process of impact crushers R1100 and R900 was also demonstrated. The visitors were with the output of R900, which is the most compact mobile crusher besides R700S in China.



New line of DRILL SEGMENTS

End of last year Diacom launched in Holland and Belgium their new line of drill segments for heavy reinforced concrete. The line is produced in Diacom's own factory in Holland. The new segments for thin- and thick walls are called DCCU segments.

The research work has taken Diacom eight months and they have improved bonding and sintering process for the new segments. This has resulted in high quality diamond segments for concrete, suitable for laser welding. The fast cutting speed for hand-held drilling has also improved very much without losing the life of the tool, which already was a fact with the older segments. A Diacom spokesman say that during their latest sales campaign "Winter 2016", the new core bits was selling very good and the professional users are very satisfied.

www.diacom.nl





Chicago Pneumatic launches new light towers

Chicago Pneumatic has introduced its new electrically powered light towers. Available in both metal and LED versions, CPLB2 light towers plug into a power source, such as an outlet or generator. Up to four CPLB2 LED light towers can be connected together and powered by one of CP's new single portable inverters.

The CPLB2 LED light tower with its 7m mast is ideal for construction and mining and features heavy duty build up and high protection index (IP 67), its four high-efficiency LED lamps give an average coverage of 3,000m² with a diameter of 61m.

Easy service and transportability have been factored into the design of the new light tower. Its compact frame allows up to 32 units to be transported on a single truck and offers simple access points for maintenance work.



Case adds Tier 4 Final T Series backhoe loaders and new styling

Case Construction Equipment upgraded its T Series backhoe loaders to the latest Tier 4 Final emissions standards compliance with selective catalytic reduction for improved fuel efficiency. Case has also added the new

backhoe design with in-line cylinder geometry and inner extendahoe, introduced on the 580ST in 2016, to the two bigger models, 590ST and 695ST. In addition Case has renewed the livery and styling on all of its products.

MOBILE CRUSHING & SCREENING PLANT



- ▶ HIGHT CAPACITIES
- ▶ LOW AIR POLLUTION
- ▶ LOW NOISE POLLUTION
- ▶ NO VIBRATIONS
- ▶ POSSIBILITY TO WORK WITH DAMP OR WET MATERIAL
- ▶ WHITHOUT THE OPERATOR
- ▶ LOW WEAR AND MAINTENANCE

CENTAURO 100.32



Via Giulio Golini, 301 - 40024 Castel San Pietro Terme (BO - Italy)
Tel. +39 051 6946611 - Fax +39 051 6946650 - ufficio.commerciale@camssrl.it - www.camssrl.it



Keestrack president Kees Hoogendoorn.

Full electric processing with **Keestrack**

Five end products with a production capacity of 180t/h and diesel consumption of 60litres/h were the results of a crushing and screening combination of four mobile Keestrack plants tested last autumn. The tests were conducted during customer demonstrations with Keestrack's Norwegian dealer Fredheim Maskin that included the presentation of hybrid drive technology and new jaw crusher B4e and the mobile cone H4e, both with new drive systems,

Highlight was the B4e jaw crusher with stacker S5e, the H4e cone with 3-deck-after-screen module and the final 2-deck-classifier K3e for five end product fractions. With a feed size of 600mm and different sets of end products, including double crushed chippings the combination reached a maximum production of 180t/h. Without activating their onboard diesel engines all machines were powered through a single 500kVA external generator set. Consumption analyses over several days gave average values of under 60litres/h.

"We were surprised by these results," said Keestrack president Kees Hoogendoorn. "Even if these values are quite specific, they clearly reflect the high economic potential of our full-hybrid technology. Applied in a mobile multi-stage processing line, it offers great advantages for contractors. Not only in daily practice, but specifically in long-term evaluation if we consider lower maintenance costs and longer service life."

"Every new level in development brought important savings in diesel consumption. With their

substantially smaller hydraulic circuits our hybrid systems provide advantages in maintenance, availability and safety, especially when working in environmentally sensitive areas."

While the screeners and conveyors on hybrid Keestrack classifiers and stackers are operated electrically, the diesel driven hydraulics only supply hydraulic cylinders and crawlers. All Keestrack crushing units were previously only powered directly through the on-board diesel engine. "Electric drives supplied via external generator sets or mains certainly offer high saving potentials, but without compromising the plants' mobility, crushing performance and productivity, which depends on optional modules with high power demands," said Hoogendoorn.

The new Keestrack B4/B4e jaw crusher is optionally available with conventional diesel-hydraulic drive or as a full-hybrid e-version. With active two deck pre-screening and the re-designed 1100mm x 700 mm jaw crusher it features the patented N.S.S. overload protection. The full-hybrid Keestrack B4e is equipped with a 242 W diesel engine and a 225kVA on-board generator. The generator supplies the 110kW crusher motor, all other electric drives on conveyors and screens and the separate 55kW electric motor/hydro pump unit for the installed hydro drives. During plug-in operation the diesel engine does not have to be started, the whole energy management is controlled automatically including the electric supply of a secondary unit.



KOMATSU EUROPE *launches wheeled loaders*

Komatsu Europe has added the new WA320-8 and WA270-8 wheel loaders with EU Stage IV engines and up to 3% lower fuel consumption. Both loaders use the Komatsu SAA6D107E-3 engine with the WA320-8 tuned for 127kW while the smaller WA270-8 is set at 111kW. The loaders are equipped with a parallel lift linkage, with auto tilt to simulate a Z-bar linkage for use in virtually any application from pallet handling to hard digging.



Klindex Expander 530 propane

The Klindex Expander 530 propane powered grinding and polishing machine, with patented geared mono-rotating planetary system, combines performance and reliability of Klindex grinding and polishing machines with the flexibility of a propane motor.

The Expander 530 allows independence from generators or mains power. This robust grinder combines its weight with a working section of 530mm, providing high productivity rates and constant performances. Main advantages are no performance drop and loss of time caused by the power grid; mono-rotating planetary; free from the hassle and costs of extension cords; no need of a generator; accurate and reliable adjustable planetary speed; low operating vibrations; light and easy to manoeuvre; ideal for indoor and outdoor applications; dry or wet grinding and standard 46litre water tank.

www-klindex-america.com



AVANT[®]

THE AVANT WAY OF DEMOLITION



Avant Tecno Oy

+358 3 347 8800

www.avanttecno.com

THE FUTURE BEGUN

- 2-DECK PRE-SCREENER
- DISCHARGE CHUTE
- AUTOSTART FUNCTION
- ADJUSTABLE SCREEN FUNCTIONS
- INCREASED OPERATOR PROTECTION
- LOW NOISE EMISSION
- COMPACT TRANSPORT DIMENSIONS
- SELF-MONITORING PLANT
- ENVIRONMENTAL FRIENDLY DRIVE

THE NEW
**ROCKSTER
R1000S**
OPENS NEW
DIMENSIONS.



ROCKSTER RECYCLER
Wirtschaftszeile West 2
4482 Ennsdorf, AUSTRIA

+43 7223 81000
office@rockster.at
www.rockster.at



LAS VEGAS / 2017
CONEXPO
STAND NO. S5058

Using excavators efficiently means using the right tool for the job. Changing a work tool manually is time consuming and can take up to 30 minutes. That is why more and more demolition and recycling contractors around the world are switching over to smart quick coupling systems. Two of the most well known suppliers in the world, Caterpillar and OilQuick are featured in this article.

Slow tool changes means serious downtime. It's distracting for the operators too, who with many systems have to get out of the cab to fit the new tool and check the connection. So something paramount on all demolition sites today is to switch attachments quick and easy. Quick attachment changes are a demand that has come with among other changed environmental regulations and increased recycling procedures. The key to a quick change is most of all a smart, easy and reliable hydraulic quick coupling system. There are many suppliers of these systems but rather few devoted to serve the demolition industry. But here are two good examples:

Connect with Caterpillar

Two strong players featured in this issue in terms of quick coupling systems for professional use within demolition and recycling operations are Caterpillar and OilQuick.

Caterpillar through Cat Work Tools offer in total four different quick coupling systems. Cat CW Series quick coupler for 301-390t excavators, Auto-Connect hydraulic coupler for excavators that fits all major brands, the Pin-Grabber coupler for 311-349t excavators and the Fusion coupler for wheel loaders, the Caterpillar 938, 950, 962, 966 and 972 H & K Series.

The most relevant system for this feature is the Cat Auto-Connect hydraulic quick coupler system. This system fits all major brands of excavators. Caterpillar's Auto-Connect hydraulic coupler automates tool exchange fully, so operators can change work tools automatically from the safety and comfort of their cabs. They simply disconnect one tool and pick up the next. It's the fastest, most efficient way to switch tools while on the job. And the integral design is typically Caterpillar, preventing ruptured hoses and oil spills and cutting out manual intervention. The new Cat Auto-Connect works on all major makes of excavator.

Auto-Connect design allows for high flows at low backpressures to ensure tools are used most effectively and to maintain optimum performance and matching. The design also ensures a perfect connection by balancing the connecting forces evenly across hoses. And the working pressure of the fluid maintains that connection even more securely. Auto-Connect automatically connects up to five hydraulic ports that typically need to be connected and disconnected by hand. That shortens the time for exchanging a hydraulic work tool from around half an hour to just a few seconds. Cutting out manual intervention also avoids potential spillage of hydraulic oil into the environment.



An Easy Conn

Auto-Connect is an integrated solution containing a host of features that ensure absolute reliability in the field. Here are five important features:

1. Two-step connection – Simply hooking up the coupler immediately activates the wedge-lock, forming a tight mechanical connection. Only then is the hydraulic connection made automatically. When disconnecting, the situation is reversed – with the hydraulic fluid connectors being the first to disengage. This unique two-step procedure keeps the connecting forces low, preventing damage to sensitive hydraulic components, as well as eliminating fluid loss. Hydro-mechanical switches are used to ensure that the procedure is correctly sequenced.
2. Full Contamination Control on both Quick Coupler and Work Tool – A sliding cover keeps any dust and debris away from the hydraulic area, protecting the fluid connectors when not in use. Seals on both the Quick Coupler and the work tool cover have been included to close the gap with the cartridges, ensuring full contamination control.
3. Fail-safe operation – Even if hydraulic pressure is lost, the wedge will remain locked by the coil springs that retract it. If the circuit needs to be disconnected, the fluid connectors can be uncoupled manually in just a few seconds.
4. Precise alignment – Robust guiding pins align the Quick Coupler and work tool before the fluid connec-

tors are engaged. A unique secondary alignment system secures the coupling.

5. Internally routed hoses – Hydraulic hoses are routed inside the work tool housing, greatly reducing the likelihood of a hose rupture during operation. The hose routing alongside the linkage idler also helps protect against hose rupture. Together, these design features reduce both machine downtime and oil spills into the environment.

Erith Group increases productivity with OilQuick automatic coupling system

Specialist demolition contractors Erith Group have recently made a significant investment in new plant and equipment to add to their already extensive fleet, including Hitachi Zaxis excavators ranging through various models in the 30-50 ton class. Erith Group Director Dave Darsey was insistent that all the new demolition spec machines purchased were to be fitted with the OilQuick automatic quick coupler system supplied and installed by Warrington based attachment specialist ECY Haulmark.

Having made the move initially to OilQuick back in November of 2013 Erith have since been reaping the benefits the OilQuick quick hitch system has to offer, in terms of safety for the site, operators and the increased productivity by no longer having to spend time manually changing between attachments. Since spring of 2015



ection

Erith Group now have nineteen of their machines fitted and operating with OilQuick.

25 attachment changes per day

ECY Haulmark were invited along to witness one of the new machines, an Hitachi Zaxis 470LCH fitted with



OilQuick OQ80 in action, working on a six month project in Garston, Liverpool dismantling a redundant gas holder.

The complexity of the project required the need to make up to 25 attachments changes per day between steel shear, selector grab and bucket. Site Manager Matthew Balson explained exactly what was involved in dismantling the gasholder. "With limited access around the gasholder being an issue, we designed a methodology to dismantle the holder from the inside of the structure. We firstly had to remove a section of the crown to allow access for the excavator to get inside. The central area of the chamber was made up of a series of brick pillars with a cast iron stanchion, which was supporting the crown. A selector Grab and LaBounty MSD2000R steel shear were able to simultaneously demolish through the brick pillars and steel in sections at a very quick rate, thanks to the OilQuick being fitted. We then removed the outer steel walls, which were 12.5m deep. Unfortunately due to space constraints our machine operator Paul Best could only reach to a depth of 10-11m with the shear. We overcame this by Paul lowering a man cage into the annulus with a burner working along and upwards to six metres height. this then allowed Paul to reach in with the LaBounty steel shear and remove sections at a time all around the inside of the holder. The inner brick wall is to be retained to allow the remaining annulus to be in filled. Once this section of the project is complete, granular infill will be used to create an access within the central container to allow for a telescopic crane to enter and begin dismantling the surrounding circular steel structure working to a height of around forty five metres," Matthew added, without the ability to make the attachment changes so quickly this project would have taken much longer to complete or seen the need for more machines working inside of the chamber.

Erith Group Managing director David Darsey commented "We initially took the OilQuick system on a

two month trial demonstration in 2013 on one of our Hitachi 280 excavators and then subsequently purchased the system. On that machine I'm pleased to say, since the OilQuick system has been on we have been totally satisfied with its performance to date carrying out heavy demolition activities using various attachments, not one hose has been replaced.

Since then we have purchased a further eighteen units. This is a testament to the quality of the OilQuick product, together with a great after sales back up from ECY Haulmark."

Valuable Testimonials

More and more contractors turn to OilQuick to get a smart and quick tool change solution and here follows some testimonials from some of the current users.

"We recently installed OilQuick on our 30t to 38t machines and is our intention to have our full fleet fitted with OilQuick in the next 12 months," says Connell Brothers Ltd, Managing Director Jim Connell.

J Mould Managing Director Jay Mould says that, "Although a costly outlay at the outset, OilQuick is proving to be one of the best investments we have made in the last few years."

"Obviously the initial outlay and costs installing OilQuick do work out expensive but I can already see the overall benefits on progress of current projects/ contracts and their swift turnaround, it's definitely the way forward and we will continue to update our further fleet in time to come," says City Demolition Managing Director Mark Doyle.

"Erith now have 22 excavators equipped with OilQuick, with the intention to upgrade the entire fleet as our renewal programme continues," end Erith Contractors Limited Managing Director David Darsey.

www.oilquick.com

dsb innocrush
experts in 30 to 50 tonne crushers



www.innocrush.com



The industry's recognized scrap shears "Eagle II".

Mantovanibenne's eagle **SOARS HIGH AGAIN**

Mantovanibenne's story is that of courage and resilience. A market leader in demolition attachments for many years, it all but lost everything when an earthquake rocked its home city of Mirandola. But like the proverbial "Phoenix from the Ashes" Mantovanibenne resurrected itself from the rubble to become stronger than ever. Andrei Bushmarin reports.

On 29 May 2012, an earthquake measuring 5.9 on the Richter scale ripped through the city of Mirandola, Emilia-Romagna, killing 17 and leaving 14,000 people homeless. It also destroyed many factories and industrial buildings in the area. Mantovanibenne's facilities were among the most heavily affected. The fact that it took the company only about a year to get itself back on track is nothing short of miracle.

A market leader since 1963

Mantovanibenne was established by Alberto Mantovani back in 1963 to produce excavator buckets, hence the company's name ("benna" means "bucket" in Italian). Having mastered the CNC (computer numerical control) technology at the end of the 1980s, Mantovanibenne diversified into demolition where it quickly became a trendsetter and a market leader. The

company was also growing internationally: in 1997 it opened its first overseas sales and service branch in Toulouse, France. Ever since its opening, France and south Europe remained an important market for the Italian manufacturer. At the turn of the millennium, Mantovanibenne commissioned a factory in Bulgaria that specialized in grapples, buckets and quick couplers for 10 to 35t excavators. In 2010 the company launched Zhejiang Mantovani Machinery (ZMM) facility in China to produce crushers and pulverisers for the Asian and North American markets. Munich-based MBI Deutschland was the latest addition to



Rotating pulverisers and concrete crushers are Mantovanibenne's signature products.

Mantovanibenne's international assets. Operational since August 2013, MBI Deutschland caters to the needs of German and mid-European customers.

Trial by earthquake

In manufacturing business even a day of downtime costs thousands of euros so when the earthquake destroyed all but the entire plant, some less-than-compassionate competitors rashly wrote Mantovanibenne off. But the company had a different opinion. Solid as a rock, Alberto Mantovani was the first to say: "we must not stop". Using containers as offices and relocating as much manufacturing as they could to Bulgaria and China, Mantovanibenne galvanized into action. Alberto's son Paolo Mantovani, who held the position of sales and marketing director at the time, travelled tirelessly all over the world reassuring the existing customers and winning over new ones. His sister Roberta picked up the administrative side of business, running day-to-day operations. It did take a lot of gumption and stamina to reverse the tide but eventually Mantovanibenne managed to turn a catastrophe into a triumph. Not only the company's turnover grew that year but it also conceived and implemented the idea of now industry-famous scrap shear SH 2000 Eagle II.

New dawn

In December 2013 Mantovanibenne restored the Mirandola facility to its full capacity. Having helped navigate the company through the worst crisis in its history, Alberto Mantovani decided it was his time to retire. The retirement though turned out to be symbolic because even after passing the baton to Paolo and Roberta he remained involved in the company's activities. By 2014 Mantovanibenne fully recovered from the shock and resumed growth. To make up for the lost time, the company worked frantically putting out at least three

Fully restored and expanded headquarters and manufacturing facilities in Mirandola.



new products every year. This hectic work schedule somehow did not affect the quality of new attachments. On the contrary, it helped the manufacturer retain its focus. Some of Mantovanibenne best-known tools were produced in recent years. One good example is the CRH440 crusher featuring a booster system, which was recognized with an innovation award in 2015.

Three-generation company

Mantovanibenne is one of the most successful family-owned companies in the demolition attachment business. Now fronted by a charismatic and well liked in the industry Paolo Mantovani, it has already started preparations for a generational change. Paolo's two sons Lorenzo and Jacopo, aged 25 and 20 respectively, will start learning the ropes of the family business later this year. At the moment they are doing the internship at major international firms.

www.mantovanibenne.com



recycling aktiv!

5th Demonstration Trade Fair
for Recycling Machines and Systems

27 - 29 April 2017
Karlsruhe Trade Fair Centre

Buy your online ticket at a reduced fare at
www.recycling-aktiv.com/ticketshop
[until 26 April 2017]

Organiser:

Parallel event: **TiefbauLive**
Putting things in motion

In cooperation with: **GEOPLAN** GEMH

SPRAY STREAM

DUST SUPPRESSION TECHNOLOGY

The portable **SprayStream** misting dust suppression units are engineered to be used in the most extreme environments and include a variety of sizes and component options.

The product range includes also pole and fixed wall mount units for indoor and outdoor applications. Self-supporting skid units with integrated generator and watertank are also available.

SprayStream is also providing solutions for odour control and cooling.



JET-ZONE

dust suppression for shredders

A new evolution in **dust suppression for crushers**, micro droplets are injected with high pressure impact proof nozzles into the crusher housing, resulting in a spectacular dust reduction over the entire crusher line.

Goodfellow Crushers • 390 N 2000 W • Pleasant Grove • UT 84062 • +1 801-796-6126

Fogco • 600 South 56th Street • Suite 9 • AZ 85226 • +1 844-329-3754

Air One Incorporated • 12 Kendrick Road • Unit 16 • Wareham • MA 02571 • +1-508-291-4600

SprayStream • Esserstraat 3A • 8550 Zwevegem • Belgium • www.spraystream.com



Kern-Deudiam successful IN THE MARKET FOR 40 YEARS

Kern-Deudiam is a leading German manufacturer of diamond tools and machines with worldwide business relationships. The company is celebrating its 40th anniversary this year, making it one of the oldest in the industry. Managing director reveals how the company has succeeded in the competitive market.

In 2008 Marko Waymann took over the management of Deudiam, from Hartwig Liemke who founded the company in 1977. The word 'Deu' stands for 'Deutsch', or German and 'Diam' for 'Diamond tools'. In the same year the merger took place with the Bielefelder company Kern, a wholly owned subsidiary of Deudiam since 1997. The company was subsequently named Kern-Deudiam. "We regard this name as a commitment for quality made in Germany," said Waymann. "We are one of the few companies in the industry who have our own production and development department in Germany.

"Our success is mainly based on five points. First of all, there is our long-term experience, which makes us experts in the field of diamond tools for stone and concrete processing. Our diamond tools offer the highest degree of precision, quality, lifetime and cutting speed. By using the best raw materials we reach a level of production, which results in constant and consistent quality, which is an absolute priority for us."

"Another important point is customer service," said sales manager Michael Schulz. "That is why our motto is 'Our Core is Service'. Depending on customer requirements, we can paint the tools and label them automatically by laser engraving. We supply the complete spectrum from packaging to labels. Since we are operating world-wide, we are able to supply our customers quickly and reliably anywhere in the world." Kern-Deudiam exports around 58% of production to around 60 countries, including England, Scandinavia,

North and South America, numerous countries in Eastern Europe and the Arab region."

"The fourth point for our success is innovation. One of the company's objectives is the development of products and technologies in the field of diamond tools," said Waymann.

Alexander Peters is responsible for finding the best possible compositions and works out the perfect mixture for the respective purpose. The company has developed more than 750 different mixtures for diamond segments.

"But our biggest asset is our highly trained team of

employees. They develop products in close coordination with field service and drilling and sawing companies to provide optimum solutions for every application."

The number of employees has almost doubled since the merger in 2008 and there are currently 50 employees, some having been with the company since the start. "Employees can work independently to a large extent, so there is little fluctuation," said Waymann. "This is a great advantage for customers, because they always have the same contact person who is familiar with their needs."

www.kern-deudiam.de



Company founder Hartwig Liemke (left) with his successor Marko Waymann.

HYDRARAM[®]

Hydraram develops and produces over more than 20 years attachments for use in demolition-, recycling- and forestry industry.

We supply a complete line of hydraulic attachments for each excavator from 1 to 200 tons.

**DEALERS
WANTED!**



**WE BRING
THE
MUSCLE**

WWW.HYDRARAM.COM

Demolition conference in Berlin 2017

The 23rd edition of the German Demolition Association's conference will be held at the Maritim Hotel Berlin, Stauffenbergstrasse 26, 10785 Berlin, on 10 to 11 March 2017.

With more than 800 participants and 100 exhibiting companies and

organisations present in 2016, the 2017 conference claims to be Europe's major event in the field of demolition. It is aimed at decision makers of demolition companies, representatives of public authorities, consultants and engineers, academics and all others interested in

demolition. By offering simultaneous translation to English, French and Italian, the DA is taking into account the continuously growing number of international participants.

There is an extensive programme of 17 presentations and an exhibition of

over 1,000m² with national and international exhibitors showing machinery, products and services.

The cost of attendance is €280/person, plus 19% VAT. Accommodation is extra.

demolition-conference.com



**THE NEW ANNA FAMILY
HIGH PERFORMANCE CUTTING
FOR PROFESSIONALS**

**TS40 ANNA
Disc Saw**

**TR40 ANNA
Ring Saw**

**TK40 ANNA
Chain Saw**

**FU6U
Frequency
Converter**

For more information about our products and contact details of WEKA sales distributors, please visit our website.

www.weka-elektrowerkzeuge.de

STEP INTO YOUR **NEXT** LEVEL



AT BOOTH GOLD LOT **G4547**

KINSHOFER
crane and excavator attachments

www.kinshofer.com
Demarec member of the Kinshofer Group. www.demarec.com



March 7-12

IACDS CONVENTION 2017

Preliminary programme

Thursday, 18 May

Professional programme

13:00-14:00 Lunch for workshop participants

14:00-15:00 Workshop: Anchoring of tools: guidelines and recommendations

15:00-16:00 Workshop: Marketing the expertise of the specialists. Debate about tolerances and advanced applications

16:00-17:00 IACDS Board meeting

All participants

18:00-19:00 Welcome cocktail

19:30 Informal dinner optional activity

Friday, 19 May

Professional programme

8:00 Welcome coffee, exhibition and networking

9:00 Opening of the IACDS multilingual conference

9:15 Conference session 1:

- Addressing risks to workers from exposure to respirable crystalline silica

- IACDS guidelines for anchoring of sawing and drilling equipment

- New tools and technologies, new challenges and new business opportunities

10:45 Coffee break, exhibition and networking

11:30 Conference session 2:

- European Professional Card for concrete sawing and drilling workers

- IACDS standard for tolerances on concrete sawing and drilling

- Beyond health and safety regulations: the critical issues to protect the workers and promote the concrete sawing and drilling applications

13:00 Lunch, exhibition and networking

15:00 IACDS General Assembly

17:30 End of the IACDS General Assembly

Leisure programme

9:30-17:00 Leisure programme for companions.

19:00 Departure from the hotel

19:30 Gala dinner optional activity

Saturday, 20 May

Visit Vienna:

- Bus
- Lunch
- Guided visits

IACDS reminds its call for papers. Tyrolit will host the welcome cocktail at the IACDS Annual Convention. IACDS invites professionals interested in participate in the Annual Convention 2017, to be speakers during the conference programme with a presentation about concrete drilling and sawing topics.

IACDS convention in Vienna

The International Association of Concrete Drillers and Sawers Annual Convention 2017 will be held from 18 to 20 May in Vienna, Austria.

The IACDS Annual Convention 2017 will offer the opportunity of improving knowledge of concrete cutting with workshops and Government meetings, conference sessions, round tables and leisure programme.

The meeting is an ideal opportunity to share company experiences and the creation of the best product for the

concrete cutting industry. IACDS invites professionals interested in participating in the Annual Convention 2017, to be speakers during the conference programme with a presentation about concrete drilling and sawing topics. Professionals from several countries will attend the convention to discover the latest industry trends, discuss common objectives and work on best practices for the industry.

The exhibitor package includes a desk at the exhibition area, the logo of

the company in the event materials and two professional tickets. The sponsor package includes the logo in a preferential position and in a bigger size, four professionals tickets, four tickets for the formal dinner and a full page of advertising in the conference book. To increase the visibility of supplier companies, IACDS offers extra packages of sponsorship.

Tyrolit will host the welcome cocktail at the IACDS Annual Convention 2017. Registration is via the IACDS website www.iacds.org/convention.



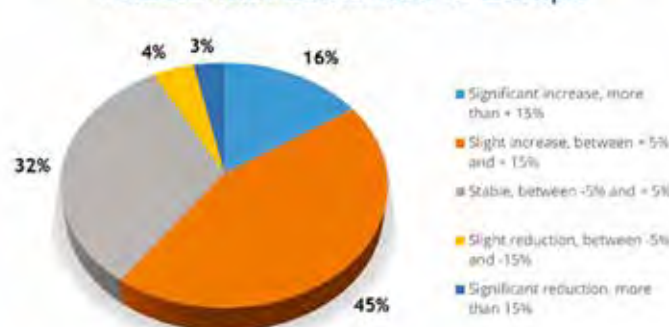
European Demolition Industry Report published

Data published in the European Demolition Industry Report 2016 indicated 45% of contractors expected an increase of about 5% and 15% in 2016, with 16% expecting more than 15%. Conversely 32% of the companies had stable business prospects while 4% expected a slight reduction between 5% and 15% and 3% a significant reduction of more than 15%. These prospects in the European Demolition Industry Report 2017 will be real data. The European Demolition Association is already preparing this through its statistics group and will be published in June at the trade fair DDR Expo 2017. In order to gather the information from

contractors, EDA has designed an online survey that has been translated into several languages to avoid mistakes and misinterpretations. The survey includes general questions about the companies, the evolution in 2016 and the forecast for 2017. For more information: www.europeandemolition.org/reports/industry2017

All responses to the questions and identification data of the companies are anonymous, and an overall analysis of the data will be made. The request will be addressed to demolition contractors with only one questionnaire per company. The gathering of information will last until 31 March. europeandemolition.org

Business prospects in 2016 for activities related with demolition in Europe



CSDA's 2017 Calendar

Mar. 14-15

Board and committee meetings, Gran Meliá Golf Resort, Rio Grande, Puerto Rico.

Mar. 16-18

45th Convention, Gran Meliá Golf Resort, Rio Grande, Puerto Rico.

Mar. 17

CSDA Tech Fair, Gran Meliá Golf Resort, Rio Grande, Puerto Rico.

Mar. 18

Annual meeting, Gran Meliá Golf Resort, Rio Grande, Puerto Rico.

Jun. 8-9

Board and committee meetings, The Westin Fort Lauderdale, Florida.

Sep. 7-8

Board and committee meetings, The Westin Phoenix Downtown, Phoenix, Arizona.

Oct. 9-10

Training: Slab sawing and core drilling 101, ICS Blount, Portland, Oregon.

Oct. 11-12

Training: Wall sawing and hand sawing 101, ICS Blount, Portland, Oregon

Oct. 13-14

Training: Wire Sawing 101, ICS Blount, Portland, Oregon

Nov. 6-7

Certification: Slab sawing and drilling 201, St. Petersburg College, Clearwater, Florida.

Nov. 8-9

Certification: Wall and hand sawing 201, St. Petersburg College, Clearwater, Florida

Nov. 10-11

Certification: Wire Sawing 201, St. Petersburg College, Clearwater, Florida

Nov. 30-Dec. 1

Board and committee meetings, Sheraton Austin Hotel at the Capitol, Austin, Texas.

Perfectly clean drilling. Done.

The world's first easy-to-use dry drilling system for reinforced concrete with innovative technologies and high quality components for professional requirements. Long-lasting and reliable. With every use.

Find out more at www.tyrolit.com



FOR EFFICIENT DEMOLITION!

- Reduce the number of machines on the site.
- No staff around the machine during tool changes.
- Increased productivity.
- Lightning fast change of hydraulic attachments.
- Reduced transport costs.
- Always the right attachment for the job.
- Eliminates oil spills.
- Protected hose run.
- Increased profitability.
- Improved safety.

